

McNeese State University

Fact Book 2007 - 2008

Table of Contents

History	1
Mission Statement	2
Institutional Goals	3
Organizational Chart	4
Accreditation	5
Inventory of Degree Programs	6
Enrollment	9
First-Time Freshmen	29
Degrees Conferred	39
Student Credit Hours (SCH)	42
Financial Aid	44
Annual Fees	44
Revenues	45
Expenditures	45
Faculty/Staff	46
Facilities	48

History

The Louisiana Legislature founded McNeese State University, then known as the Lake Charles Junior College, as a division of Louisiana State University with the opening session of the college beginning on September 11, 1939. The following fall, the school changed its name to John McNeese Junior College to honor John McNeese, a renowned Southwest Louisiana educator and the first superintendent of schools in Imperial Calcasieu Parish. In 1950, McNeese became a four-year college in its own right and came under the authority of the Louisiana Board of Education. Finally, in 1970, McNeese State University became the official name of the school.

McNeese achieved Commission on Colleges/Southern Association of Colleges and Schools accreditation in 1954 and maintains its regional accreditation status as a Level IV institution authorized to award associate, bachelor, master, and specialist degrees. The University also provides opportunities for continuing education in support of its mission to value lifelong learning. As a member of the University of Louisiana System and a selective admissions institution, McNeese offers degrees through the department of general and basic studies and six academic colleges: Business, Education, Engineering and Engineering Technology, Liberal Arts, Nursing, and Science. McNeese's student body is comprised of students from throughout Louisiana, the United States, and approximately 50 countries. McNeese's athletic programs are NCAA-certified for competition at I-AA and I-A levels.

The McNeese State University campus in Lake Charles, Louisiana, features 68 buildings on 500 acres dotted with live oak trees and azalea bushes. The McNeese community continues to use the university's three original structures — Kaufman Hall, Ralph O. Ward Memorial Gym (the Arena), and Francis G. Bulber Auditorium. Bulber Auditorium, a striking example of Art Deco architecture, is listed on the National Register of Historic Places.

McNeese State University upholds a long tradition of service to the Southwest Louisiana community and the nation. The University motto of "Excellence with a Personal Touch" extends beyond the classroom to offering help to others in times of need. During World War II, the campus was the headquarters of the Louisiana Maneuvers, an extensive military exercise to prepare American soldiers for battle. In 1957, the McNeese community gave aid and comfort to the victims of Hurricane Audrey and served as the National Guard's base of rescue operations. Recently, McNeese provided shelter for New Orleans residents and university students fleeing from Hurricane Katrina. McNeese faced one of its greatest challenges when Hurricane Rita struck in the fall of 2005. The storm caused devastating damage to campus facilities and infrastructure. The recovery effort after Hurricane Rita demonstrated the resilience and commitment of the McNeese faculty, staff, and students to higher education and to moving forward in support of the core values of academic excellence, student success, fiscal responsibility, and university/community alliances.

Mission Statement

McNeese State University, a selective admissions institution, provides education, research, and service that support our core values of academic excellence, student success, fiscal responsibility, and university-community alliances. The University's fundamental educational mission is to offer associate, baccalaureate, and specific graduate curricula distinguished by academic excellence. The University engages in collaborative ventures to benefit industry and to enhance economic development and cultural growth in this region and beyond.

The foundation for student success begins with faculty commitment to excellence in teaching, research, and creative and scholarly activity. At McNeese State University, a member of the University of Louisiana System, students cultivate skills for critical thinking and effective expression and gain an understanding of the global community. The learning and social environment integrates discipline-specific knowledge with the values of lifelong learning, ethical responsibility, and civic engagement.

Adopted by McNeese State University - 2/21/05

Approved by the Board of Supervisors of the University of Louisiana System - 4/29/05

Institutional Goals

Adopted 6/29/05

Revised 8/11/05

Academic Excellence

1. Emphasize excellence in instruction.
2. Develop programs that are viable, innovative, and relevant to market needs.
3. Infuse a global outlook and ethical standards in course content and curriculum development.
4. Uphold the commitment to regional and national program accreditation.
5. Encourage undergraduate and graduate research in appropriate disciplines.

Student Success

1. Foster a climate that enhances student learning, focuses on retention, values advising, and enriches the quality of campus-life.
2. Nurture an environment to support cultural diversity.
3. Present students opportunities for leadership.
4. Provide venues for learning to attract non-traditional students.
5. Provide an aesthetically-pleasing campus, functional facilities, and state-of-the-art equipment.

Fiscal Responsibility

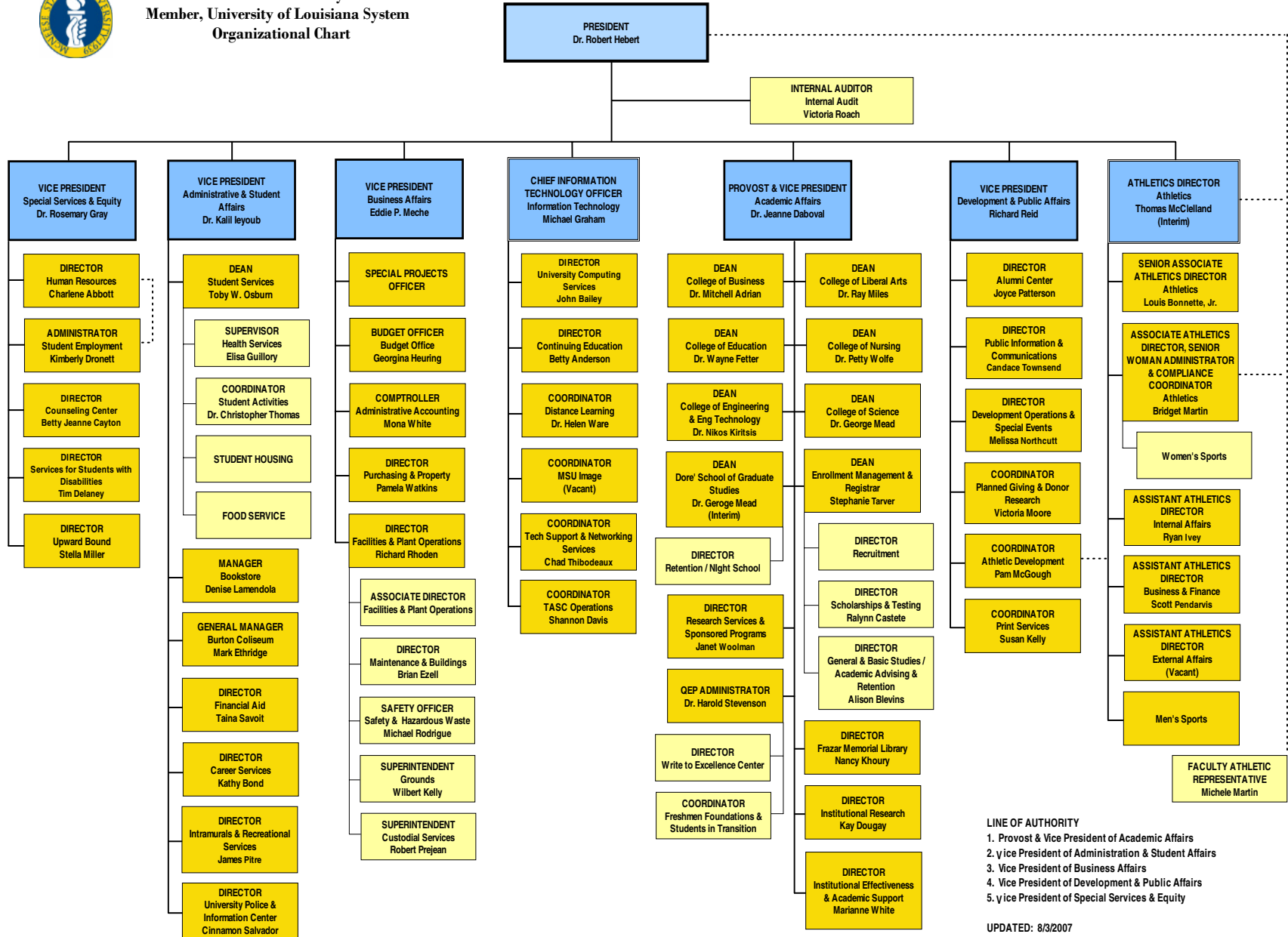
1. Engage in continuous assessment, evaluation, and improvement.
2. Utilize the role of technology to increase the efficiency and effectiveness of campus operations.
3. Garner outside funding sources to support the University mission.
4. Capitalize of efficient use of resources.
5. Support efforts to obtain federal funding.

University-Community Alliances

1. Support mutually beneficial university/community collaborations.
2. Strengthen economic development through partnerships that provide technical assistance and information transfer to business and industry.
3. Enhance artistic, humanistic, and cultural opportunities in the area.
4. Retain certification and maintain competition in NCAA athletic programs
5. Partner with educational agencies to improve the quality of life in our region.



McNeese State University
 Member, University of Louisiana System
Organizational Chart



LINE OF AUTHORITY
 1. Provost & Vice President of Academic Affairs
 2. Vice President of Administration & Student Affairs
 3. Vice President of Business Affairs
 4. Vice President of Development & Public Affairs
 5. Vice President of Special Services & Equity

UPDATED: 8/3/2007

Accreditation

McNeese State University is accredited by the Commission on Colleges of the Southern Association of Colleges and Schools, 1866 Southern Lane, Decatur, Georgia 30033-4097, P-404.679.4500, www.sacscoc.org, to award associate, bachelor, master, and specialist degrees. A comprehensive list of other agencies included in the Board of Regents General Policy on Program Accreditation that have accredited or approved McNeese academic programs follows:

- AACSB International – The Association to Advance Collegiate Schools of Business International, 7777 South Harbor Island Blvd., Suite 750, Tampa, FL 33602-5730, P- (813) 769-6500, www.aacsb.edu/.
- AAFCS – American Association of Family and Consumer Sciences, 400 N. Columbus St., Suite 202, Alexandria, VA 22314, P- (703) 706-4600, www.aafcs.org.
- ACS – American Chemical Society, 1155 Sixteenth St. NW, Washington, DC 20036, P- (800) 227-5558, www.acs.org.
- CADE – Commission on Accreditation for Dietetics Education, American Dietetic Association, 120 S. Riverside Plaza, Suite 2000, Chicago, IL 60606-6995, P- (800)877-1600, www.eatright.org.
- CAC/ABET Inc. – Computing Accreditation Commission of the Accreditation Board of Engineering and Technology, 111 Market Place, Suite 1050, Baltimore, MD 21202-4012, P- (410) 347-7700, www.abet.org.
- EAC/ABET Inc. – Engineering Accreditation Commission of the Accreditation Board of Engineering and Technology, 111 Market Place, Suite 1050, Baltimore, MD 21202-4012, P- (410) 347-7700, www.abet.org.
- JRCERT – Joint Review Committee on Education in Radiologic Technology, 20 N. Wacker Drive, Suite 2850, Chicago, IL 60606-3182, P- (312) 704-5300, www.jrcert.org.
- NAACLS – National Accrediting Agency for Clinical Laboratory Sciences, 8410 W. Bryn Mawr Ave., Suite 670, Chicago, IL 60631, P- (773) 714-8880, www.naacls.org.
- NASM – National Association of Schools of Music, 11250 Roger Bacon Drive, Suite 21, Reston, VA 20190-5248, P-(703) 437-0700, www.nasm.arts-accredit.org.
- NCATE – National Council for Accreditation of Teacher Education, 2010 Massachusetts Ave. NW, Suite 500, Washington, DC 20036, P- (202) 466-7496, www.ncate.org.
- NLNAC – National League for Nursing Accrediting Commission, 61 Broadway, New York, NY 10006, P- (800) 669-1656, www.nln.org.
- TAC/ABET Inc. – Technology Accreditation Commission of the Accreditation Board of Engineering and Technology, 111 Market Place, Suite 1050, Baltimore, MD 21202-4012, P- (410) 347-7700, www.abet.org.

Other agencies that have approved or certified programs include:

- AAHPERD/NASPE – American Alliance for Health, Physical Education, Recreation and Dance/National Association for Sport and Physical Education
- ACEI – Association for Childhood Education International
- CEC – Council for Exceptional Children
- ISTE – International Society for Technology Education
- BESE – Louisiana Board of Elementary and Secondary Education
- ELCC – Educational Leaders Constituency Consortium
- LSBN – Louisiana State Board of Nursing
- NAEYC – National Association for the Education of Young Children
- NCAA – National Collegiate Athletic Association
- NCSS – National Council for the Social Studies
- NCTE – National Council of Teachers of English
- NCTM – National Council of Teachers of Mathematics
- NSTA – National Science Teachers Association
- OAKE – Organization of American Kodály Educators

Inventory of Degree Programs

General and Basic Studies

General Studies.....	A.G.S.
General Studies.....	B.G.S.

College of Business

Accounting.....	B.S.
Business Administration.....	M.B.A.
Finance.....	B.S.
General Business Administration.....	B.S.
Management.....	B.S.
Marketing.....	B.S.

Burton College of Education

Business Education—Grades 6-12.....	B.S.
Curriculum and Instruction.....	M.Ed.
Early Childhood Education—Grades PK-3.....	B.S.
Educational Leadership.....	M.Ed.
Educational Leadership.....	Ed.S.
Educational Technology Leadership	M.Ed.
Elementary Education—Grades 1-5.....	B.S.
Elementary Education—Grades 1-5.....	M.A.T.
Health and Physical Education—Grades K-12.....	B.S.
Health and Human Performance, General	B.S.
Health and Human Performance	M.S.
Instructional Technology.....	M.S.
Psychology.....	B.S.
Psychology.....	M.A.
School Counseling.....	M.Ed.
Secondary Education—Grades 6-12.....	M.A.T.
Special Education, General.....	B.A.
Special Education Mild/Moderate—Grades 1-12.....	M.A.T.

College of Engineering & Engineering Technology

Engineering.....	B.S.
Engineering.....	M. Eng.
Engineering Technology.....	A.S.
Engineering Technology.....	B.S.

College of Liberal Arts

Art.....	B.A.
Art Education—Grades K-12.....	B.A.
Creative Writing.....	M.F.A.
Criminal Justice.....	B.S.
English.....	B.A.
English.....	M.A.
English Education—Grades 6-12.....	B.A.
Foreign Languages Education—Grades 6-12.....	B.A.
French.....	B.A.
Government.....	B.A.
History.....	B.A.
Liberal Studies.....	B.A.
Mass Communication.....	B.S.
Music Education— Instrumental Grades K-12	B.M.Ed.
Music Education—Vocal Grades K-12	B.M.Ed.
Music Education.....	M.M.Ed.
Music Performance.....	B.M.
Paralegal Studies.....	A.A.
Social Studies Education—Grades 6-12.....	B.A.
Sociology.....	B.A.
Spanish.....	B.A.
Speech.....	B.A.
Speech Education—Grades 6-12.....	B.S.
Theatre Arts.....	B.A.

College of Nursing

Nursing.....	A.D.N.
Nursing.....	B.S.N.
Nursing.....	M.S.N.

College of Science

Agricultural Education—Grades 6-12.....	B.S.
Agricultural Sciences.....	B.S.
Biological Science.....	B.S.
Biology Education—Grades 6-12.....	B.S.
Chemistry.....	B.S.
Chemistry Education—Grades 6-12.....	B.S.
Clinical Laboratory Science.....	B.S.
Computer Information Technology.....	A.S.
Computer Science.....	B.S.
Environmental and Chemical Sciences.....	M.S.
Environmental Science.....	B.S.
Environmental Science Education—Grades 6-12.....	B.S.
Family & Consumer Sciences.....	B.S.
Family & Consumer Sciences Education—Grades 6-12.....	B.S.
Mathematics Education—Grades 6-12.....	B.S.
Mathematical Sciences.....	M.S.
Mathematics.....	B.S.
Radiologic Technology.....	B.S.
Physics.....	B.S.
Wildlife Management.....	B.S.

This Page is Intentionally Left Blank

**Enrollment
Fall 2007**

Fall 2007 Enrollment by Level

	<u>Enrollment</u>	<u>Percent</u>
Undergraduate	7,053	87.1%
Graduate	1,042	12.9%
Total	8,095	100.0%

Fall 2007 Full-Time Equivalent Enrollment by Level

	<u>Enrollment</u>	<u>Percent</u>
Undergraduate (12 hours)	8,108.4	90.9%
Graduate (9 hours)	815.8	9.1%
Total	8,924.2	100.0%

Fall 2007 Enrollment by Rank

	<u>Enrollment</u>	<u>Percent</u>
Early Admissions	235	2.90%
Freshman	2,521	31.14%
Sophomore	1,211	14.96%
Junior	1,199	14.81%
Senior	1,875	23.16%
Masters Candidate	836	10.33%
Education Specialist	3	.04%
Special Graduate	200	2.47%
Non-Credit/Non-Degree	15	.19%
Total	8,095	100.0%

Fall 2007 Enrollment by Status

	<u>Undergraduate</u>	<u>Graduate</u>	<u>Total</u>	<u>Percent</u>
Full-Time	5,811	379	6,190	76.5%
Part-Time	1,242	663	1,905	23.5%
Total	7,053	1,042	8,095	100.0%

Fall 2007 Enrollment by Gender

	<u>Undergraduate</u>	<u>Graduate</u>	<u>Total</u>	<u>Percent</u>
Female	4,324	688	5,012	61.9%
Male	2,729	354	3,083	38.1%
Total	7,053	1,042	8,095	100.0%

Fall 2007 Enrollment by Ethnicity

	<u>Undergraduate</u>	<u>Graduate</u>	<u>Total</u>	<u>Percent</u>
Amer Indian/Alaska Native	50	3	53	.7%
Asian/Pacific Islander	73	9	82	1.0%
Black	1,291	122	1,413	17.5%
Foreign	206	195	401	4.9%
Hispanic	90	12	102	1.3%
Other / Not specified	52	7	59	.7%
White	5,291	694	5,985	73.9%
Total	7,053	1,042	8,095	100.0%

Fall 2007 Enrollment by Current Entry Status

	<u>Undergraduate</u>	<u>Graduate</u>	<u>Total</u>	<u>Percent</u>
Early Admissions	235		235	2.9%
Continuing	4,900	673	5,573	68.8%
First-Time Freshmen	1,301		1,301	16.1%
New Graduate		242	242	3.0%
Re-Entry	294	110	404	5.0%
Transfer	323	17	340	4.2%
Total	7,053	1,042	8,095	100.0%

Fall 2007 Enrollment by Age

	<u>Undergraduate</u>	<u>Graduate</u>	<u>Total</u>	<u>Percent</u>
Under 18	273		273	3.4%
18 – 19	2,077		2,077	25.6%
20 – 21	1,857	12	1,869	23.1%
22 – 24	1,419	263	1,682	20.8%
25 – 29	631	305	936	11.6%
30 – 34	316	152	468	5.8%
35 – 39	195	101	296	3.6%
40 – 49	201	131	332	4.1%
50 – 64	79	67	146	1.8%
Over 64	5	11	16	.2%
Total	7,053	1,042	8,095	100.0%

Fall 2007 Enrollment by Age

	<u>Undergraduate</u>	<u>Graduate</u>	<u>Total</u>	<u>Percent</u>
Under 25	5,626	275	5,901	72.9%
25 and Older	1,427	767	2,194	27.1%
Total	7,053	1,042	8,095	100.0%

Fall 2007 Average Age

	<u>Average Age</u>	<u>Median Age</u>
All Students	23.9	21
First-Time Freshmen	18.8	18
Undergraduate	22.8	21
Graduate	31.9	28

Fall 2007 Enrollment by Parish

<u>Parish</u>	<u>Enrollment</u>		<u>Parish</u>	<u>Enrollment</u>
Acadia	221		St Mary	27
Allen	290		St Tammany	32
Ascension	14		Tangipahoa	12
Assumption	2		Terrebonne	27
Avoyelles	9		Union	1
Beauregard	472		Vermilion	128
Bossier	15		Vernon	148
Caddo	14		Washington	3
Calcasieu	4,292		Webster	1
Cameron	212		West Baton Rouge	1
Catahoula	2		West Carroll	1
Concordia	2		West Feliciana	6
DeSoto	7		Winn	3
East Baton Rouge	49			
East Feliciana	3		Total Louisiana	7,183
Evangeline	115		% of Total Enrollment	88.7%
Grant	5		Number of Parishes	56
Iberia	31		Five Parish Total	5,751
Iberville	6			
Jackson	3			
Jefferson	29			
Jefferson Davis	486			
Lafayette	136			
Lafourche	9			
LaSalle	5			
Lincoln	2			
Livingston	12			
Madison	1			
Morehouse	5			
Natchitoches	19			
Orleans	38			
Ouachita	11			
Plaquemines	4			
Pointe Coupee	6			
Rapides	61			
Sabine	11			
St Bernard	4			
St Charles	12			
St Helena	1			
St James	2			
St John	6			
St Landry	130			
St Martin	39			

Fall 2007 Enrollment by State

State	Enrollment
Alabama	2
Alaska	1
Arizona	2
Arkansas	4
California	6
Colorado	5
Connecticut	1
Florida	8
Georgia	6
Idaho	1
Illinois	8
Indiana	2
Iowa	2
Kansas	4
Louisiana	7,183
Maryland	2
Massachusetts	4
Michigan	3
Minnesota	2
Mississippi	9
Missouri	1
Nebraska	1
New Jersey	4
New Mexico	2
New York	2
North Carolina	4
Ohio	2
Oklahoma	6
Oregon	1
Pennsylvania	5
Puerto Rico	1
South Carolina	3
Tennessee	8
Texas	383
Virginia	5
Wisconsin	7
Total	7,690
Total Out of State	507
% Out of State of Total Enrollment	6.3%
Number of States (Other than Louisiana)	35

Fall 2007 Enrollment by Foreign Country

<u>Country</u>	<u>Enrollment</u>		<u>Country</u>	<u>Enrollment</u>
Argentina	1		Trinidad and Tobago	2
Azerbaijan	7		Turkey	9
Bangladesh	2		Ukraine	1
Bolivia	10		United Kingdom	6
British Virgin Islands	1		Venezuela	3
Bulgaria	1		Vietnam	16
Cambodia	2			
Chile	1		Total Foreign	405
China	24		% of Total Enrollment	5.0%
Colombia	19		Number of Countries (Other than USA)	50
Croatia	1			
Ecuador	10			
Germany	4			
Great Britain & N Ireland	1			
Honduras	3			
Iceland	2			
India	141			
Indonesia	14			
Ireland	2			
Jamaica	2			
Japan	1			
Kenya	1			
Korea, Republic of	12			
Lithuania	1			
Macedonia	1			
Mexico	6			
Nepal	28			
Netherlands	1			
Niger	1			
Nigeria	7			
Pakistan	4			
Peru	8			
Philippines	1			
Portugal	1			
Romania	2			
Russia	2			
Serbia	1			
Singapore	1			
Slovenia	1			
South Africa	4			
Spain	1			
Taiwan	16			
Thailand	18			

Fall 2007 Undergraduate Enrollment by Residency

	<u>Part-Time</u>	<u>Full-Time</u>	<u>Total</u>	<u>Percent</u>
Louisiana	1,202	5,167	6,369	90.3%
Out of state	40	434	474	6.7%
Foreign		210	210	3.0%
<i>Total</i>	<i>1,242</i>	<i>5,811</i>	<i>7,053</i>	<i>100.0%</i>

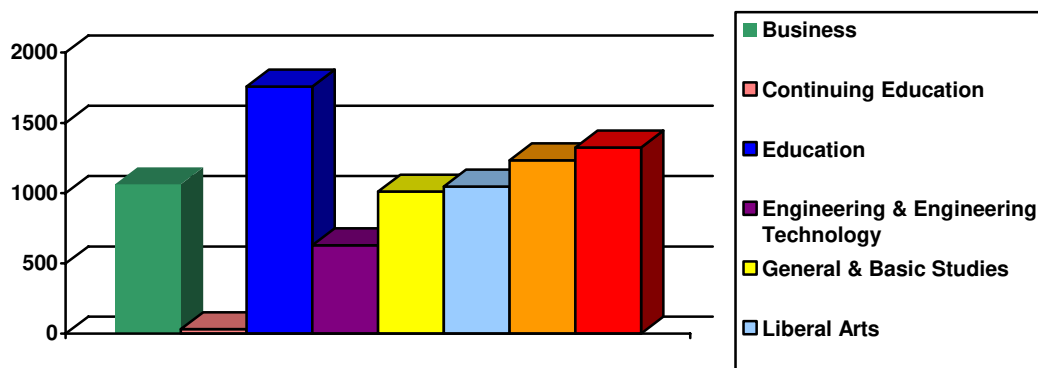
Fall 2007 Graduate Enrollment by Residency

	<u>Part-Time</u>	<u>Full-Time</u>	<u>Total</u>	<u>Percent</u>
Louisiana	641	173	814	78.1%
Out of state	12	21	33	3.2%
Foreign	10	185	195	18.7%
<i>Total</i>	<i>663</i>	<i>379</i>	<i>1,042</i>	<i>100.0%</i>

This Page is Intentionally Left Blank

Fall 2007 Enrollment by College

	<u>Undergraduate</u>	<u>Graduate</u>	<u>Total</u>	<u>Percent</u>
Business	975	87	1,062	13.1%
Continuing Education	12	20	32	.4%
Education	1,168	590	1,758	21.7%
Engineering & Engineering Technology	528	101	629	7.8%
General & Basic Studies	1,010		1,010	12.5%
Liberal Arts	1,004	43	1,047	12.9%
Nursing	1,139	94	1,233	15.2%
Science	1,217	107	1,324	16.4%
Total	7,053	1,042	8,095	100.0%



Historical Fall Undergraduate Enrollment by College

	<u>2003</u>	<u>2004</u>	<u>2005</u>	<u>2006</u>	<u>2007</u>
Business	1,172	1,194	1,088	1,071	975
Continuing Education	51	35	15	10	12
Education	1,440	1,405	1,340	1,218	1,168
Engineering & Engineering Technology	534	510	515	529	528
General & Basic Studies	769	982	1,206	1,017	1,010
Liberal Arts	1,284	1,288	1,216	1,103	1,004
Nursing	859	1,051	1,193	1,133	1,139
Science	1,221	1,259	1,274	1,255	1,217
Total	7,330	7,724	7,847	7,336	7,053

Historical Fall Graduate Enrollment by College

	<u>2003</u>	<u>2004</u>	<u>2005</u>	<u>2006</u>	<u>2007</u>
Business	95	81	87	85	87
Continuing Education	36	19	18	16	20
Education	637	550	712	599	590
Engineering & Engineering Technology	62	78	86	80	101
Graduate School	106	133			
Liberal Arts	45	47	54	53	43
Nursing	53	65	68	69	94
Science	83	87	120	105	107
Total	1,117	1,060	1,145	1,007	1,042

Fall 2007 Enrollment by College and Department

<u>College</u>	<u>Department Name</u>	<u>Undergraduate</u>	<u>Graduate</u>	<u>Total</u>
Business	Accounting, Fin, & Economics	335	5	340
	Mgmt, Marketing and Gen Bus	640	82	722
<i>College of Business Total</i>		975	87	1,062
Continuing Education	Continuing Education	12	20	32
<i>Continuing Education Total</i>		12	20	32
Education	Educ Leadership & Instr Tech	20	119	139
	Health & Human Performance	381	30	411
	Psychology	244	69	313
	Teacher Education	523	372	895
<i>College of Education Total</i>		1,168	590	1,758
Engineering & Engineering Technology	Engineering	372	101	473
	Engineering Technology	156		156
<i>College of Engineering & Engineering Technology Total</i>		528	101	629
General & Basic Studies	Basic Studies	1,010		1,010
<i>General & Basic Studies Total</i>		1,010		1,010
Liberal Arts	English & Foreign Languages	131	32	163
	History	132		132
	Mass Communication	154		154
	Performing Arts	99	7	106
	Social Sciences	317		317
	Visual Arts	171	4	175
<i>College of Liberal Arts Total</i>		1,004	43	1,047
Nursing	Graduate Nursing		94	94
	Undergraduate Nursing	1,139		1,139
<i>College of Nursing Total</i>		1,139	94	1,233
Science	Agriculture	225	9	234
	Biological & Envr Sciences	608	13	621
	Chemistry	91	11	102
	Math, Computer Science, & Stat	165	66	231
	Nutrition and Family Studies	118	8	126
	Physics	10		10
<i>College of Science Total</i>		1,217	107	1,324
University Total		7,053	1,042	8,095

Historical Undergraduate Enrollment by College and Department

College	Department Name	2003	2004	2005	2006	2007
Business	Accounting, Fin, & Economics	388	377	376	370	335
	Mgmt, Marketing and Gen Bus	784	817	712	701	640
College of Business Total		1,172	1,194	1,088	1,071	975
Continuing Education	Continuing Education	51	35	15	10	12
Continuing Education Total		51	35	15	10	12
Education	Educ Leadership & Instr Tech	9	19	20	21	20
	Health & Human Performance	356	398	396	368	381
	Psychology	244	252	257	233	244
	Teacher Education	831	736	667	596	523
College of Education Total		1,440	1,405	1,340	1,218	1,168
Engineering & Engineering Technology	Engineering	389	376	353	361	372
	Engineering Technology	145	134	162	168	156
College of Engineering & Engineering Technology Total		534	510	515	529	528
General & Basic Studies	Basic Studies	769	982	1,206	1,017	1,010
Gen & Basic Studies Total		769	982	1,206	1,017	1,010
Liberal Arts	English & Foreign Languages	79	117	138	135	131
	History	175	151	152	129	132
	Mass Communication*	214	230	209	186	154
	Music*	104				
	Performing Arts*		131	115	110	99
	Social Sciences	494	478	431	369	317
	Speech and Theatre Arts*	62				
	Visual Arts	156	181	171	174	171
College of Liberal Arts Total		1,284	1,288	1,216	1,103	1,004
Nursing	Undergraduate Nursing	859	1,051	1,193	1,133	1,139
College of Nursing Total		859	1,051	1,193	1,133	1,139
Science	Agriculture	213	214	211	214	225
	Biological & Envr Sciences	590	582	589	619	608
	Chemistry	45	84	106	102	91
	Math, Computer Science, & Stat	191	193	188	164	165
	Nutrition and Family Studies	174	178	171	145	118
	Physics	8	8	9	11	10
College of Science Total		1,221	1,259	1,274	1,255	1,217
University Total		7,330	7,724	7,847	7,336	7,053

*In Fall 2004 Speech was combined with Mass Communications;
 Music and Theatre Arts were combined into Performing Arts.

Historical Graduate Enrollment by College and Department

<u>College</u>	<u>Department Name</u>	<u>2003</u>	<u>2004</u>	<u>2005</u>	<u>2006</u>	<u>2007</u>
Business	Accounting, Fin, & Economics			5	4	5
	Mgmt, Marketing and Gen Bus	95	81	82	81	82
<i>College of Business Total</i>		95	81	87	85	87
Continuing Education	Continuing Education	36	19	18	16	20
<i>Continuing Education Total</i>		36	19	18	16	20
Education	Educ Leadership & Instr Tech	222	195	214	140	119
	Health & Human Performance	29	33	32	29	30
	Psychology	99	66	83	58	69
	Teacher Education	287	256	383	372	372
<i>College of Education Total</i>		637	550	712	599	590
Engineering & Engineering Tech	Engineering	62	78	86	80	101
<i>College of Engineering & Engineering Technology Total</i>		62	78	86	80	101
Graduate School	Graduate School	106	133			
<i>College of Graduate School Total</i>		106	133			
Liberal Arts	English & Foreign Languages	37	39	44	32	32
	History				2	
	Music	8			1	
	Performing Arts		8	7	10	7
	Visual Arts			3	8	4
<i>College of Liberal Arts Total</i>		45	47	54	53	43
Nursing	Graduate Nursing	53	65	68	69	94
<i>College of Nursing Total</i>		53	65	68	69	94
Science	Agriculture			3	7	9
	Biological & Envr Sciences	5	4	17	13	13
	Chemistry	4	1	23	23	11
	Math, Computer Science, & Stat	39	40	68	53	66
	Nutrition and Family Studies	9	8	9	9	8
	Science	26	34			
<i>College of Science Total</i>		83	87	120	105	107
University Total		1,117	1,060	1,145	1,007	1,042

Fall 2007 Enrollment by Department and Major

<u>College/Department</u>	<u>Major</u>	<u>Undergraduate</u>	<u>Graduate</u>	<u>Total</u>
Business				
Accounting, Fin & Economics	Accounting	256		256
	Finance	79		79
	Nondegree		5	5
<i>Department Total</i>		335	5	340
Mgmt, Marketing, & Gen Bus	Business Administration		80	80
	Gen Business Administration	254		254
	Management	222		222
	Marketing	164		164
	Nondegree		2	2
<i>Department Total</i>		640	82	722
College of Business Total		975	87	1,062
Continuing Education				
Continuing Education	EASE Program	12	20	32
<i>Department Total</i>		12	20	32
Continuing Education Total		12	20	32
Education				
Educ Leadership & Instr Tech	Administration & Supervision		1	1
	Business Education – Grades 6-12	20		20
	Educational Leadership		63	63
	Educational Technology		4	4
	Educational Technology Leadership		28	28
	Instructional Technology		21	21
	Nondegree		2	2
<i>Department Total</i>		20	119	139
Health & Human Performance	Health & Human Performance		26	26
	Health & Human Performance, Education	58		58
	Health & Human Performance, General	205		205
	Health & Physical Education, Gr K-12	118		118
	Nondegree		4	4
<i>Department Total</i>		381	30	411
Psychology	Nondegree		2	2
	Psychology	244	67	311
<i>Department Total</i>		244	69	313

Fall 2007 Enrollment by Department and Major (continued)

<u>College/Department</u>	<u>Major</u>	<u>Undergraduate</u>	<u>Graduate</u>	<u>Total</u>
Teacher Education	Add-on Teacher Certification		28	28
	Alt Certification – Grades 1-12 Mild/Moderate Sp Ed		16	16
	Alt Certification – Grades K-12 Health & Physical Ed		10	10
	Alt Certification – Grades 1-5		37	37
	Alt Certification – Grade 6-12		16	16
	Alt Certification – K-12 Art Ed		2	2
	Alt Certification – Grades PK-3		12	12
	Curriculum and Instruction		10	10
	Early Childhood Education	10		10
	Early Childhood Educ – Grades PK- 3	217		217
	Education		16	16
	Elementary Education	11		11
	Elementary Education – Grades 1–5	239	70	309
	Nondegree		6	6
	School Counseling		19	19
	Secondary Education	10		10
	Secondary Education Grades 6-12		92	92
	Special Education, Mild/Mod Gr 1-12		38	38
	Special Education, General	36		36
<i>Department Total</i>		523	372	895
<i>College of Education Total</i>		<i>1,168</i>	<i>590</i>	<i>1,758</i>
Engineering & Engineering Technology				
Engineering	Engineering	372	100	472
	Nondegree		1	1
<i>Department Total</i>		372	101	473
Engineering Technology	Engineering Technology	156		156
<i>Department Total</i>		156		156
<i>College of Engineering & Engineering Technology Total</i>		<i>528</i>	<i>101</i>	<i>629</i>
General & Basic Studies				
Basic Studies	Basic Studies	286		286
	General Studies	489		489
	Undeclared	235		235
<i>Department Total</i>		1,010		1,010
<i>General & Basic Studies Total</i>		<i>1,010</i>		<i>1,010</i>

Fall 2007 Enrollment by Department and Major (continued)

<u>College/Department</u>	<u>Major</u>	<u>Undergraduate</u>	<u>Graduate</u>	<u>Total</u>
Liberal Arts				
English & Foreign Languages	Creative Writing		18	18
	English	58	10	68
	English Education Grades 6 – 12	48		48
	Foreign Language Education Gr 6-12	9		9
	French	4		4
	Nondegree		4	4
	Spanish	12		12
<i>Department Total</i>		<i>131</i>	<i>32</i>	<i>163</i>
History	General Studies	2		2
	History	55		55
	Liberal Studies	21		21
	Social Studies Education Gr 6 – 12	54		54
<i>Department Total</i>		<i>132</i>		<i>132</i>
Mass Communication	Mass Communication	143		143
	Speech	10		10
	Speech Education Grades 6-12	1		1
<i>Department Total</i>		<i>154</i>		<i>154</i>
Performing Arts	Music Education	17	6	23
	Music Educ–Instrumental, Gr K–12	37		37
	Music Education – Vocal, Gr 6 – 12	12		12
	Nondegree		1	1
	Performance	21		21
	Theatre Arts	12		12
<i>Department Total</i>		<i>99</i>	<i>7</i>	<i>106</i>
Social Sciences	Criminal Justice	167		167
	General Studies	2		2
	Government	37		37
	Paralegal Studies	31		31
	Sociology	80		80
<i>Department Total</i>		<i>317</i>		<i>317</i>
Visual Arts	Art	137		137
	Art Education	10		10
	Art Education – Grades K – 12	23		23
	General Studies	1		1
	Nondegree		4	4
<i>Department Total</i>		<i>171</i>	<i>4</i>	<i>175</i>
College of Liberal Arts Total		1,004	43	1,047

Fall 2007 Enrollment by Department and Major (continued)

<u>College/Department</u>	<u>Major</u>	<u>Undergraduate</u>	<u>Graduate</u>	<u>Total</u>
Nursing				
Graduate Nursing	Nondegree		12	12
	Nursing		82	82
<i>Department Total</i>			94	94
Undergraduate Nursing	Nursing	1,139		1,139
<i>Department Total</i>		1,139		1,139
College of Nursing Total		1,139	94	1,233
Science				
Agriculture	Agricultural Education – Grs 6 – 12	10		10
	Agricultural Sciences	167		167
	Environmental & Chemical Sciences		8	8
	Nondegree		1	1
	Wildlife Management	48		48
<i>Department Total</i>		225	9	234
Biological & Envr Sciences	Biological Science	290		290
	Biology Education – Grades 6 – 12	14		14
	Clinical Laboratory Science	63		63
	Environmental & Chemical Sciences		7	7
	Environmental Science	24		24
	Environmental Science Education Grades 6-12	3		3
	Nondegree		6	6
	Radiologic Technology	214		214
<i>Department Total</i>		608	13	621
Chemistry	Chemistry	88		88
	Chemistry Education – Grades 6-12	3		3
	Environmental & Chemical Sciences		11	11
<i>Department Total</i>		91	11	102
Math, Computer Sci and Stat	Computer Information Tech	20		20
	Computer Science	95		95
	Mathematical Sciences		62	62
	Mathematics	11		11
	Mathematics Education – Grades 6-12	39		39
	Nondegree		4	4
<i>Department Total</i>		165	66	231

Fall 2007 Enrollment by Department and Major (continued)

<u>College/Department</u>	<u>Major</u>	<u>Undergraduate</u>	<u>Graduate</u>	<u>Total</u>
Nutrition & Family Studies	Dietetic Certification		8	8
	Family & Consumer Sciences Education Grades 6-12	2		2
	Family & Consumer Sciences	116		116
<i>Department Total</i>		<i>118</i>	<i>8</i>	<i>126</i>
Physics	Physics	10		10
<i>Department Total</i>		<i>10</i>		<i>10</i>
<i>College of Science Total</i>		<i>1,217</i>	<i>107</i>	<i>1,324</i>
University Total		7,053	1,042	8,095

Historical Enrollment Data

<u>Fall</u>	<u>Under-graduate</u>	<u>Graduate</u>	<u>Total</u>		<u>Fall</u>	<u>Under-graduate</u>	<u>Graduate</u>	<u>Total</u>
2007	7,053	1,042	8,095		1971	5,067	958	6,025
2006	7,336	1,007	8,343		1970	4,844	750	5,594
2005	7,847	1,145	8,992		1969	4,568	582	5,150
2004	7,724	1,060	8,784		1968	4,618	472	5,090
2003	7,330	1,117	8,447		1967	4,234	308	4,542
2002	7,010	1,019	8,029		1966	3,983	333	4,316
2001	6,845	935	7,780		1965	3,512	295	3,807
2000	6,731	901	7,632		1964	3,149	211	3,360
1999	6,865	1,014	7,879		1963	2,663	164	2,827
1998	6,978	1,017	7,995		1962	2,999	132	3,131
1997	7,050	1,087	8,137		1961	2,848	98	2,946
1996	7,063	1,024	8,087		1960	2,697		2,697
1995	7,381	1,063	8,444		1959	2,502		2,502
1994	7,658	1,071	8,729		1958	2,444		2,444
1993	7,347	1,057	8,404		1957	2,024		2,024
1992	7,316	1,158	8,474		1956	1,916		1,916
1991	6,818	1,013	7,831		1955	1,661		1,661
1990	6,662	1,062	7,724		1954	1,367		1,367
1989	6,557	1,022	7,579		1953	1,192		1,192
1988	6,383	1,040	7,423		1952	993		993
1987	6,457	1,036	7,493		1951	905		905
1986	6,430	950	7,380		1950	501		501
1985	6,648	1,176	7,824		1949	397		397
1984	6,645	1,336	7,981		1948	575		575
1983	6,491	1,535	8,026		1947	615		615
1982	5,888	1,463	7,351		1946	640		640
1981	5,461	1,556	7,017		1945	233		233
1980	4,700	691	5,391		1944	131		131
1979	4,435	721	5,156		1943	146		146
1978	4,626	750	5,376		1942	169		169
1977	4,883	642	5,525		1941	223		223
1976	5,048	758	5,806		1940	242		242
1975	5,058	955	6,013		1939	254		254
1974	4,841	845	5,686					
1973	4,922	915	5,837					
1972	5,226	959	6,185					

This Page is Intentionally Left Blank

First-Time Freshmen

Fall 2007 First-Time Freshmen by Status

	<u>Total</u>	<u>Percent</u>
Full-Time	1,252	96.2%
Part-Time	49	3.8%
Total	1,301	100.0%

Fall 2007 First-Time Freshmen by Gender

	<u>Full-Time</u>	<u>Part-Time</u>	<u>Total</u>	<u>Percent</u>
Female	719	32	751	57.7%
Male	533	17	550	42.3%
Total	1,252	49	1,301	100.0%

Fall 2007 First-Time Freshmen by Ethnicity

	<u>Full-Time</u>	<u>Part-Time</u>	<u>Total</u>	<u>Percent</u>
Amer Indian/Alaska Native	10		10	.7%
Asian/Pacific Islander	14		14	1.1%
Black	231	16	247	19.0%
Foreign	42		42	3.2%
Hispanic	15		15	1.2%
Other/Race Ethnicity Unknown	15		15	1.2%
White	925	33	958	73.6%
Total	1,252	49	1,301	100.0%

Fall 2007 First-Time Freshmen Admissions

	<u>Total</u>
Applied	2,267
Accepted	1,768
Enrolled Full Time	1,252
Enrolled Part Time	49

Fall 2007 First-Time Freshmen by Parish

Parish	Enrollment	Parish	Enrollment
Acadia	26		
Allen	41	Total Louisiana	1,165
Ascension	1	% of Total FTF	89.6%
Avoyelles	2	Number of Parishes	40
Beauregard	75	Five Parish Total	966
Bossier	3		
Caddo	4		
Calcasieu	735		
Cameron	43		
Catahoula	1		
De Soto	1		
East Baton Rouge	3		
Evangeline	15		
Iberia	6		
Iberville	4		
Jefferson	4		
Jefferson Davis	72		
La Salle	1		
Lafayette	13		
Lafourche	1		
Lincoln	1		
Livingston	4		
Morehouse	2		
Natchitoches	3		
Orleans	5		
Ouachita	3		
Pointe Coupee	2		
Rapides	6		
St Bernard	1		
St Charles	3		
St James	1		
St Landry	23		
St Martin	11		
St Mary	6		
St Tammany	3		
Terrebonne	4		
Union	1		
Vermilion	13		
Vernon	24		
West Feliciana	1		

Fall 2007 First-Time Freshmen by State

State	Enrollment
Arizona	2
Arkansas	1
California	1
Colorado	2
Florida	2
Georgia	3
Idaho	1
Illinois	1
Louisiana	1,165
Mississippi	2
Oklahoma	1
Pennsylvania	1
Texas	75
Wisconsin	2
Total	1,259
Total Out of State	94
% of Total FTF	7.2%
Number of States (Other than Louisiana)	13

Fall 2007 First-Time Freshmen by Foreign Country

<u>Country</u>	<u>Enrollment</u>
Bolivia	1
Chile	1
China	9
Ecuador	1
Germany	3
Great Britain & N Ireland	1
Iceland	1
India	1
Indonesia	2
Ireland	1
Japan	1
Lithuania	1
Nepal	7
Nigeria	2
Peru	1
South Africa	1
Thailand	3
United Kingdom	2
Vietnam	3
Total Foreign	42
% of Total FTF	3.2%
Number of Countries (Other than USA)	19

Fall 2007 First-Time Freshmen by Residency

	<u>Part-Time</u>	<u>Full-Time</u>	<u>Total</u>	<u>Percent</u>
Louisiana	47	1,118	1,165	89.6%
Out of state	2	92	94	7.2%
Foreign		42	42	3.2%
Total	49	1,252	1,301	100.0%

Fall 2007 First-Time Freshmen Enrollment by College

	Full-Time	Part-Time	Total	Percent
Business	123	2	125	9.6%
Continuing Education		3	3	.2%
Education	165	2	167	12.8%
Engineering & Engineering Technology	121	4	125	9.6%
General & Basic Studies	235	16	251	19.3%
Liberal Arts	137	2	139	10.7%
Nursing	201	11	212	16.3%
Science	270	9	279	21.5%
Total	1,252	49	1,301	100.0%

Historical Fall First-Time Freshmen Enrollment by College

	2003	2004	2005	2006	2007
Business	180	208	108	134	125
Continuing Education	7	9		3	3
Education	188	210	172	164	167
Engineering & Engineering Technology	113	107	111	105	125
General & Basic Studies	361	357	337	272	251
Liberal Arts	206	225	147	153	139
Nursing	211	268	213	212	212
Science	304	289	281	276	279
Total	1,570	1,673	1,369	1,319	1,301

Fall 2007 First-Time Freshmen by College and Department

College	Department	Total
Business	Accounting, Fin & Economics	46
	Mgmt, Marketing, & Gen Bus	79
<i>College of Business Total</i>		125
Continuing Education	Continuing Education	3
<i>Continuing Education Total</i>		3
Education	Educ Leadership & Instr Tech	1
	Health & Human Performance	64
	Psychology	48
	Teacher Education	54
<i>College of Education Total</i>		167
Engineering & Engineering Technology	Engineering	100
	Engineering Technology	25
<i>College of Engineering & Engineering Technology Total</i>		125
General & Basic Studies	Basic Studies	251
<i>General & Basic Studies Total</i>		251
Liberal Arts	English & Foreign Languages	22
	History	13
	Mass Communication	17
	Performing Arts	22
	Social Sciences	37
	Visual Arts	28
<i>College of Liberal Arts Total</i>		139
Nursing	Undergraduate Nursing	212
<i>College of Nursing Total</i>		212
Science	Agriculture	42
	Biological & Envr Sciences	162
	Chemistry	28
	Math, Computer Sci and Stat	43
	Nutrition & Family Studies	4
<i>College of Science Total</i>		279
University Total		1,301

Historical First-Time Freshmen Enrollment by College and Department

College	Department Name	2003	2004	2005	2006	2007
Business	Accounting, Fin, & Economics	49	52	32	39	46
	Mgmt, Marketing and Gen Bus	131	156	76	95	79
College of Business Total		180	208	108	134	125
Continuing Education	Continuing Education	7	9		3	3
Continuing Education Total		7	9		3	3
Education	Educ Leadership & Instr Tech	1	1	1	1	1
	Health & Human Performance	59	72	59	51	64
	Psychology	51	50	39	52	48
	Teacher Education	77	87	73	60	54
College of Education Total		188	210	172	164	167
Engineering & Engineering Technology	Engineering	104	93	92	85	100
	Engineering Technology	9	14	19	20	25
College of Engineering & Engineering Technology Total		113	107	111	105	125
General & Basic Studies	Basic Studies	361	357	337	272	251
General & Basic Studies Total		361	357	337	272	251
Liberal Arts	English & Foreign Languages	12	21	22	18	22
	History	22	17	13	16	13
	Mass Communication*	40	39	26	28	17
	Music*	29				
	Performing Arts*		32	21	26	22
	Social Sciences	68	83	47	42	37
	Speech and Theatre Arts*	7				
	Visual Arts	28	33	18	23	28
College of Liberal Arts Total		206	225	147	153	139
Nursing	Undergraduate Nursing	211	268	213	212	212
College of Nursing Total		211	268	213	212	212
Science	Agriculture	49	47	42	36	42
	Biological & Envr Sciences	183	143	150	168	162
	Chemistry	11	21	29	16	28
	Math, Computer Science, & Stat	47	48	38	36	43
	Nutrition & Family Studies	12	27	20	15	4
	Physics	2	3	2	5	
College of Science Total		304	289	281	276	279
University Total		1,570	1,673	1,369	1,319	1,301

*In Fall 2004 Speech was combined with Mass Communications;
 Music and Theatre Arts were combined into Performing Arts.

Fall 2007 First-Time Freshmen by Department and Major

College/Department	Major	Total
Business		
Accounting, Fin & Economics	Accounting	39
	Finance	7
<i>Department Total</i>		46
Mgmt, Marketing, & Gen Bus	Gen Business Administration	49
	Management	17
	Marketing	13
<i>Department Total</i>		79
College of Business Total		125
Continuing Education		
Continuing Education	EASE Program	3
<i>Department Total</i>		3
Continuing Education Total		3
Education		
Educ Leadership & Instr Tech	Business Education – Grades 6-12	1
<i>Department Total</i>		1
Health & Human Performance	Health & Human Performance, General	43
	Health & Physical Education, Grades K–12	21
<i>Department Total</i>		64
Psychology	Psychology	48
<i>Department Total</i>		48
Teacher Education	Early Childhood Education–Grades PK–3	23
	Elementary Education – Grades 1–5	31
<i>Department Total</i>		54
College of Education Total		167
Engineering & Engineering Technology		
Engineering	Engineering	100
<i>Department Total</i>		100
Technology	Engineering Technology	25
<i>Department Total</i>		25
College of Engineering & Engineering Technology Total		125

Fall 2007 First-Time Freshmen by Department and Major (continued)

<u>College/Department</u>	<u>Major</u>	<u>Total</u>
General & Basic Studies		
Basic Studies	Basic Studies	241
	General Studies	10
<i>Department Total</i>		251
General & Basic Studies Total		
251		
Liberal Arts		
English & Foreign Languages	English	8
	English Education Grades 6 – 12	11
	Foreign Language Education Grades 6-12	1
	French	1
	Spanish	1
<i>Department Total</i>		22
History	History	8
	Social Studies Education Grades 6 – 12	5
<i>Department Total</i>		13
Mass Communication	Mass Communication	15
	Speech	2
<i>Department Total</i>		17
Performing Arts	Music Educ–Instrumental Grades K–12	13
	Music Education – Vocal Grades 6 – 12	3
	Performance	4
	Theatre Arts	2
<i>Department Total</i>		22
Social Sciences	Criminal Justice	19
	Government	6
	Paralegal Studies	4
	Sociology	8
<i>Department Total</i>		37
Visual Arts	Art	24
	Art Education – Grades K – 12	4
<i>Department Total</i>		28
College of Liberal Arts Total		139

Fall 2007 First-Time Freshmen by Department and Major (continued)

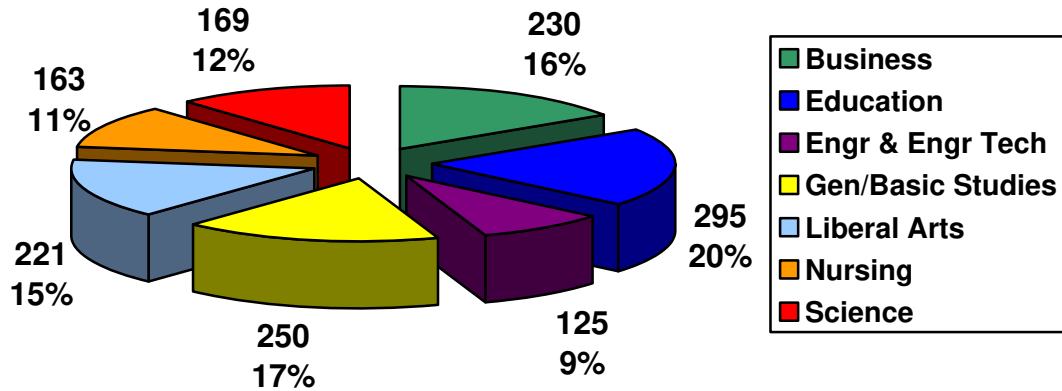
<u>College/Department</u>	<u>Major</u>	<u>Total</u>
Nursing		
Undergraduate Nursing	Nursing	212
<i>Department Total</i>		212
College of Nursing Total		212
Science		
Agriculture	Agricultural Sciences	33
	Wildlife Management	9
<i>Department Total</i>		42
Biological & Envr Sciences	Biological Science	103
	Biology Education – Grades 6 – 12	1
	Clinical Laboratory Science	7
	Environmental Science	3
	Radiologic Technology	48
<i>Department Total</i>		162
Chemistry	Chemistry	28
<i>Department Total</i>		28
Math, Computer Sci and Stat	Computer Information Tech	2
	Computer Science	32
	Mathematics	1
	Mathematics Education – Grades 6-12	8
<i>Department Total</i>		43
Nutrition & Family Studies	Family & Consumer Sciences	4
<i>Department Total</i>		4
College of Science Total		279
University Total		1,301

**Degrees Conferred
July 1, 2006 – June 30, 2007**

Degrees Conferred by College and Level

	<u>Associate</u>	<u>Bachelor's</u>	<u>Master's</u>	<u>Education Specialist</u>	<u>Total</u>
Business		203	27		230
Education	1	147	143	4	295
Engineering & Engineering Technology	27	54	44		125
General & Basic Studies	57	193			250
Liberal Arts	14	192	15		221
Nursing	30	121	12		163
Science	9	133	27		169
Total	138	1,043	268	4	1,453

Degrees Conferred by College



Historical Degrees Conferred by College

	<u>02-03</u>	<u>03-04</u>	<u>04-05</u>	<u>05-06</u>	<u>06-07</u>
Business	197	235	237	206	230
Education	339	303	299	328	295
Engineering & Engineering Technology	113	135	87	133	125
General & Basic Studies	4	121	223	219	250
Liberal Arts	294	223	256	226	221
Nursing	76	112	88	132	163
Science	195	193	167	168	169
Total	1,218	1,322	1,357	1,412	1,453

Historical Degrees Conferred by Level

	<u>02-03</u>	<u>03-04</u>	<u>04-05</u>	<u>05-06</u>	<u>06-07</u>
Associate	159	179	124	120	138
Bachelor	865	900	991	1,041	1,043
Master	182	227	235	248	268
Education Specialist	12	16	7	3	4
Total	1,218	1,322	1,357	1,412	1,453

Top 10 Bachelor's Degrees Conferred 2006–2007

	<u>Number of Degrees</u>
BGS General Studies	193
BSN Nursing	121
BS Accounting	69
BS Management	54
BS Marketing	43
BS Criminal Justice	39
BS Engineering	38
BS Mass Communication	35
BA Sociology	30
BS Health & Human Performance, Gen	27

Top 5 Associate Degrees Conferred 2006–2007

	<u>Number of Degrees</u>
AGS General Studies	63
ADN Nursing	30
AS Engineering Technology	27
AS Computer Information Technology	9
AA Paralegal Studies	8

Top 5 Master's Degrees Conferred 2006–2007

	<u>Number of Degrees</u>
MEd Administration and Supervision	50
MEng Engineering	44
MBA Business Administration	27
MAT Secondary Education Grades 6-12	20
MS Mathematical Sciences	19

**Student Credit Hours (SCH)
Fall 2007 by Department and Level**

	Lower UG	Upper UG	Graduate	Total
Accounting, Fin & Econ	1,131	2,475	246	3,852
Agriculture	820	1,109	63	1,992
Biological & Envr Sciences	6,252	3,400	193	9,845
Chemistry	2,411	1,242	90	3,743
Educ Leadership & Instr Tech	629	412	1,005	2,046
Engineering	581	1,587	961	3,129
Engineering Technology	411	718		1,129
English & Foreign Languages	7,466*	2,126	298	9,890
General and Basic Studies	1,255	21		1,276
Graduate Nursing			578	578
Health & Human Performance	2,587	2,543	250	5,380
History	3,333	1,239	3	4,575
Mass Communications	2,377	1,534	12	3,923
Math, Comp Sci, & Stat	9,758**	2,949	866	13,573
Mgmt, Marketing and Gen Bus	1,380	3,603	450	5,433
Nutrition and Family Studies	782	1,422	72	2,276
Performing Arts	2,045	1,313	37	3,395
Physics	1,066	808	7	1,881
Psychology	3,306	1,851	689	5,846
Social Sciences	4,300	3,764	42	8,106
Stdnt Tchng & Prof Educ Srv		465	171	636
Teacher Education	722	2,231	639	3,592
Undergraduate Nursing	301	5,629	3	5,933
Visual Arts	1,173	1,288	15	2,476
Total	54,086	43,729	6,690	104,505

* Includes 960 developmental

** Includes 1,508 developmental

Historical Fall SCH's by Department

	2003	2004	2005	2006	2007
Accounting, Fin & Econ	5,115	4,818	4,443	4,308	3,852
Agriculture	1,980	2,212	2,185	1,973	1,992
Biological & Envr Sciences	8,724	9,718	10,107	8,719	9,845
Chemistry	4,220	4,132	4,911	4,404	3,743
Educ Leadership & Instr Tech	2,754	2,638	3,260	2,394	2,046
Engineering	2,247	2,340	2,352	2,467	3,129
Engineering Technology	870	893	1,038	1,143	1,129
English & Foreign Languages*	11,186	12,004	11,568	10,254	9,890
General and Basic Studies	1,554	1,670	1,382	1,351	1,276
Graduate Nursing **			366	355	578
Health & Human Performance	4,087	4,355	4,835	4,643	5,380
History	6,018	6,918	5,973	5,136	4,575
Honor's College*	47	45			
Mass Communications***	1,277	3,782	3,732	3,811	3,923
Math, Comp Sci, & Stat	15,111	15,613	14,854	14,386	13,573
Mgmt, Marketing and Gen Bus	5,898	5,877	5,520	5,565	5,433
Music***	2,622				
Nursing**	3,674	4,231			
Nutrition and Family Studies	2,121	2,849	2,710	2,847	2,276
Performing Arts***		4,350	4,577	4,429	3,395
Physics	2,158	2,076	2,075	2,150	1,881
Psychology	6,260	5,673	6,854	5,869	5,846
Social Sciences	9,078	9,646	9,758	8,578	8,106
Speech and Theatre Arts***	2,791				
Student Tchng & Prof Educ Srvc	786	933	909	726	636
Teacher Education	4,317	4,002	4,504	3,958	3,592
Undergraduate Nursing**			4,977	5,477	5,933
Visual Arts	2,046	2,454	2,730	2,676	2,476
Total	106,941	113,229	115,620	107,619	104,505

* In Fall 2005 Honor's College was combined with English and Foreign Languages.

** In Fall 2005 Nursing was divided into Graduate and Undergraduate Nursing Departments.

*** In Fall 2004 Speech was combined with Mass Communications; Music and Theatre Arts were combined into Performing Arts.

Financial Aid

	<u>03-04</u>	<u>04-05</u>	<u>05-06</u>	<u>06-07</u>
Unduplicated Count of Students	10,096	10,558	10,393	9,828
Undergraduates Receiving Aid	6,372	6,907	6,702	6,201
% of Undergraduates Receiving Aid	75%	77%	75%	74%
Amount of Undergraduate Aid	\$35,943,723	\$40,465,577	\$40,892,953	\$37,426,588
Graduates Receiving Aid	833	873	794	769
% of Graduates Receiving Aid	52%	54%	51%	52%
Amount of Graduate Aid	\$4,833,171	\$5,263,199	\$5,550,945	\$4,545,992
Students Receiving Federal Aid	4,649	5,087	4,697	4,390
Amount of Federal Aid	\$26,568,930	\$29,261,039	\$29,7960,446	\$27,491,063

Full-Time Average Annual Fees 2007-2008 (Fall and Spring Semesters)

	<u>Undergraduate</u> <u>(15 hours)</u>	<u>Graduate</u> <u>(9 hours)</u>
In-State Undergraduate Tuition & Fees	\$3,262	\$3,111
Out-of-State Undergraduate Tuition & Fees	\$9,328	\$9,177

Student Charges 2007-2008 Academic Year

Room (based on semi-private dorm)	\$1,500
Board (average meal plan)	\$1,960

Revenues
Operating (Unrestricted) Fund

	Actual 2005-2006	Actual 2006-2007	Budgeted 2007-2008
Revenues by Source			
State Funds	\$27,162,866	\$32,606,269	\$43,247,275
Self-Generated Funds	\$24,317,365	\$22,414,381	\$25,667,467
Total Revenues	\$51,480,231	\$55,020,650	\$68,914,742

Expenditures
Operating (Unrestricted) Fund

	Actual 2005-2006	Actual 2006-2007	Budgeted 2007-2008
Expenditures by Function			
Instruction	\$23,817,790	\$23,918,616	\$31,390,381
Research	\$527,348	\$599,548	\$763,176
Academic Support	\$5,274,181	\$5,292,828	\$6,785,466
Student Services	\$3,098,999	\$3,484,472	\$4,957,060
Institutional Services	\$5,808,917	\$6,459,501	\$8,348,803
Scholarships/Fellowships	\$3,633,503	\$3,792,939	\$4,341,500
Plant Operations/Maintenance	\$5,372,606	\$7,282,332	\$7,088,362
Transfers out of agency	\$1,277,977	\$1,476,368	\$1,906,312
Athletics	\$2,668,910	\$2,714,046	\$3,333,682
Expenditures by Expense Category			
Salaries	\$27,858,314	\$29,213,220	\$36,321,697
Other Compensation	\$326,169	\$429,105	\$793,472
Related Benefits	\$9,111,575	\$9,201,240	\$12,244,001
Travel	\$131,804	\$213,392	\$487,254
Operating Services	\$2,885,665	\$3,395,885	\$4,179,837
Supplies	\$555,554	\$605,595	\$808,327
Professional Services	\$145,773	\$171,834	\$416,914
Other Charges	\$6,575,020	\$6,822,824	\$8,075,182
Interagency Transfers	\$1,277,977	\$1,476,368	\$1,906,312
General Acquisitions	\$2,224,107	\$1,385,931	\$2,190,246
Library Acquisitions	\$192,749	\$321,758	\$291,500
Major Repairs	\$195,523	\$1,783,498	\$1,200,000
Total Expenditures	\$51,480,231	\$55,020,650	\$68,914,742

Faculty/Staff

Fall 2007 Full-Time Faculty by Rank

	Tenured	On tenure track	Not on tenure track	Total	Percent
Professors	63			63	20.0%
Associate Professors	53	2	1	56	17.7%
Assistant Professors	41	90	10	141	44.6%
Instructors			56	56	17.7%
Total	157	92	67	316	100.0%

Fall 2007 Full-Time Faculty by Highest Degree

	Tenured	On tenure track	Not on tenure track	Total	Percent
Bachelors			4	4	1.3%
Masters	36	20	47	103	32.6%
Terminal Masters	7	5	8	20	6.3%
Doctorate	114	67	8	189	59.8%
Total	157	92	67	316	100.0%

Fall 2007 Full-Time Faculty by Race and Gender

	Men	Women	Total	Percent
American Indian/Alaska Native		1	1	.3%
Asian/Pacific Islander	19	5	24	7.6%
Black, non-Hispanic	4	12	16	5.0%
Foreign	2	1	3	1.0%
Hispanic	3		3	1.0%
White, non-Hispanic	146	123	269	85.1%
Total	174	142	316	100.0%

Full-Time Equivalent Faculty

07-08	368.7
06-07	339.3
05-06	343.0
04-05	343.2

Student to Faculty Ratio*

Fall 2007	20 to 1
Fall 2006	21 to 1
Fall 2005	22 to 1

* (Full-Time students + 1/3 Part-Time students) / (Full-Time faculty + 1/3 Part-Time faculty)

Fall 2007 Employees by Occupation

	Full-Time	Part-Time	Total	Percent
Primarily Instruction	316	98	414	46.3%
Executive/administrative/managerial	52		52	5.8%
Other professionals (support/service)	153	12	165	18.5%
Technical and paraprofessionals	56	4	60	6.7%
Clerical and secretarial	101	2	103	11.5%
Skilled crafts	21	1	22	2.5%
Service/Maintenance	78		78	8.7%
Total	777	117	894	100.0%

Fall 2007 Employees by Race and Gender

	Men	Women	Total	Percent
American Indian/Alaska Native	1	3	4	.4%
Asian/Pacific Islander	22	8	30	3.4%
Black, non-Hispanic	60	82	142	15.9%
Foreign, Non-Resident	2	2	4	.4%
Hispanic	4	2	6	.7%
White, non-Hispanic	301	407	708	79.2%
Total	390	504	894	100.0%

Facilities

	Owned	Leased	Total
Land Holdings	500.95 Acres	265.45 Acres	766.4 Acres
Building Gross Square Footage	1,402,457	413,816	1,816,273
Building Net Assignable Square Footage	980,421	338,175	1,318,596

Net Assignable Space by Allocation Category

	Square Feet	% Total
Academic	500,539	50.1%
Administrative	63,114	6.3%
Athletics	66,695	6.7%
Auxiliary*	205,873	20.6%
Residential	163,587	16.3%
Total	999,808	100.0%

* Does not include 318,788 square feet for Burton Coliseum which is leased from Calcasieu Parish Police Jury and is used for basketball games and graduation twice a year.