

McNeese

STATE UNIVERSITY



Fact Book

2009-2010

Prepared by: Office of Institutional Research
www.mcneese.edu/ir

McNeese State University
4205 Ryan Street
Lake Charles, LA 70609

Fact Book 2009 – 2010
(Revised Feb, 2011)

Table of Contents

| | |
|---|-----------|
| History..... | 1 |
| Mission Statement..... | 2 |
| Institutional Goals..... | 3 |
| Organizational Chart..... | 4 |
| Accreditation | 5 |
| Inventory of Degree Programs | 6 |
| Fall Enrollment | 9 |
| Historical Fall Enrollment Data Since 1939 | 29 |
| First-Time Freshmen | 31 |
| Transfers..... | 41 |
| Spring Enrollment | 47 |
| Historical Spring Enrollment Data Since 1940 | 67 |
| Degrees Conferred | 68 |
| Student Credit Hours (SCH)..... | 75 |
| Financial Aid | 83 |
| Full-Time Average Annual Fees..... | 84 |
| Revenues | 85 |
| Expenditures..... | 85 |
| Faculty/Staff | 86 |
| Facilities | 88 |

McNEESE STATE UNIVERSITY

University Accomplishments During Presidency of Dr. Robert D. Hebert

The 2009-2010 McNeese Fact Book is dedicated to Dr. Robert D. Hebert in recognition of his 41 years of service at McNeese State University, including 23 years as president.

Through his exemplary leadership and guidance, McNeese State University has experienced record enrollment increases (8,992 in fall 2005), endured tremendous challenges (recovered from over \$30 million in damages from Hurricane Rita on September 24, 2005) and strengthened its commitment to academic excellence (100% accreditation of all programs required for national accreditation), student success (100% medical school acceptance rate four times in 10 years), fiscal responsibility (fewest audit findings in the University of Louisiana System in the past 10 years) and university-community alliances (creation of the Southwest Louisiana Entrepreneurial and Economic Development Center).

Other University accomplishments during the presidency of Dr. Hebert include:

Initiating selective admissions in 2000 and strengthening the requirements in the fall of 2005.



Creating numerous centers and institutes: (1) Violet H. Howell Institute for the Study of Industry-Community Relations, (2) Groundwater Research Institute, (3) Center for Management Development, (4) Institute of Performing Arts, (5) Real Estate and Professional Development Institute, (6) Center for Economic Education, (7) Lake Area Industries/McNeese Engineering Institute, (8) Louisiana Environmental Research Center, (9) H. C. Drew Center for Economic Development, (10) H. C. Drew Institute, (11) Kay Dore' Counseling Center and (12) Small Business Development Center.

Emphasizing individualized attention to students. (McNeese was one of only three universities in the South and 12 in the nation ranked in the national listing of "Schools that Offer a High Level of Individual Academic Attention from Faculty" in The College Catalog 2001, published by Kaplan and Newsweek. The ratings are based on a national survey of high school guidance counselors.)

Adopting the University Motto, "Excellence with a Personal Touch," in 1989 on McNeese's 50th anniversary.

Implementing an extensive emergency and communications system to provide a quick response in the event of a sudden threat to students and employees.

Completing several university buildings and countless renovations of existing facilities, and enhanced parking and paving repairs. Dr. Hebert was instrumental in securing private funds, grants and state appropriations that total \$84,904,748 in new construction and major renovations including 15 new structures or facilities, \$20,987,679 in major repairs and more than \$27 million in funding for renovations currently underway or in the planning stages.

Placing a major emphasis on private fund raising including creating a development office and raising McNeese Foundation assets from less than \$1 million in 1987 to over \$55 million. Under Dr. Hebert's presidency, the McNeese Foundation assets have become the third highest in the University of Louisiana System and the highest among public universities our size in the state.

History

McNeese State University was established by the Louisiana Legislature in 1939. The institution was first named Lake Charles Junior College, and was a division of Louisiana State University with the opening session beginning on September 11, 1939. The following fall, the school changed its name to John McNeese Junior College to honor John McNeese, a renowned Southwest Louisiana educator and the first superintendent of schools in Imperial Calcasieu Parish. In 1950, McNeese became a four-year college in its own right and came under the authority of the Louisiana Board of Education. Finally, in 1970, McNeese State University became the official name of the school.

McNeese achieved Commission on Colleges/Southern Association of Colleges and Schools accreditation in 1954 and maintains its regional accreditation status as a Level IV institution authorized to award associate, bachelor, master, and specialist degrees. The University also provides opportunities for continuing education in support of its mission to value lifelong learning. As a member of the University of Louisiana System and a selective admissions institution, McNeese offers degrees through the department of general and basic studies and six academic colleges: Business, Education, Engineering and Engineering Technology, Liberal Arts, Nursing, and Science. McNeese's student body is comprised of students from throughout Louisiana, the United States, and over 50 countries. McNeese's athletic programs are NCAA-certified for competition at Division I level.

The McNeese State University campus in Lake Charles, Louisiana, features 68 buildings on 500 acres dotted with live oak trees and azalea bushes. The McNeese community continues to use the university's three original structures — Kaufman Hall, Ralph O. Ward Memorial Gym (the Arena), and Francis G. Bulber Auditorium. Bulber Auditorium, a striking example of Art Deco architecture, is listed on the National Register of Historic Places.

McNeese State University upholds a long tradition of service to the Southwest Louisiana community and the nation. The University motto of "Excellence with a Personal Touch" extends beyond the classroom to offering help to others in times of need. During World War II, the campus was the headquarters of the Louisiana Maneuvers, an extensive military exercise to prepare American soldiers for battle. In 1957, the McNeese community gave aid and comfort to the victims of Hurricane Audrey and served as the National Guard's base of rescue operations. Recently, McNeese provided shelter for New Orleans residents and university students fleeing from Hurricane Katrina. McNeese faced one of its greatest challenges when Hurricane Rita struck in the fall of 2005. The storm caused devastating damage to campus facilities and infrastructure. The recovery effort after Hurricane Rita demonstrated the resilience and commitment of the McNeese faculty, staff, and students to higher education and to moving forward in support of the core values of academic excellence, student success, fiscal responsibility, and university/community alliances.

Mission Statement

McNeese State University, a selective admissions institution, provides education, research, and service that support our core values of academic excellence, student success, fiscal responsibility, and university-community alliances. The University's fundamental educational mission is to offer associate, baccalaureate, and specific graduate curricula distinguished by academic excellence. The University engages in collaborative ventures to benefit industry and to enhance economic development and cultural growth in this region and beyond.

The foundation for student success begins with faculty commitment to excellence in teaching, research, and creative and scholarly activity. At McNeese State University, a member of the University of Louisiana System, students cultivate skills for critical thinking and effective expression and gain an understanding of the global community. The learning and social environment integrates discipline-specific knowledge with the values of lifelong learning, ethical responsibility, and civic engagement.

Adopted by McNeese State University - 2/21/05

Approved by the Board of Supervisors of the University of Louisiana System - 4/29/05

Institutional Goals

Adopted 6/29/05

Revised 8/11/05

Academic Excellence

1. Emphasize excellence in instruction.
2. Develop programs that are viable, innovative, and relevant to market needs.
3. Infuse a global outlook and ethical standards in course content and curriculum development.
4. Uphold the commitment to regional and national program accreditation.
5. Encourage undergraduate and graduate research in appropriate disciplines.

Student Success

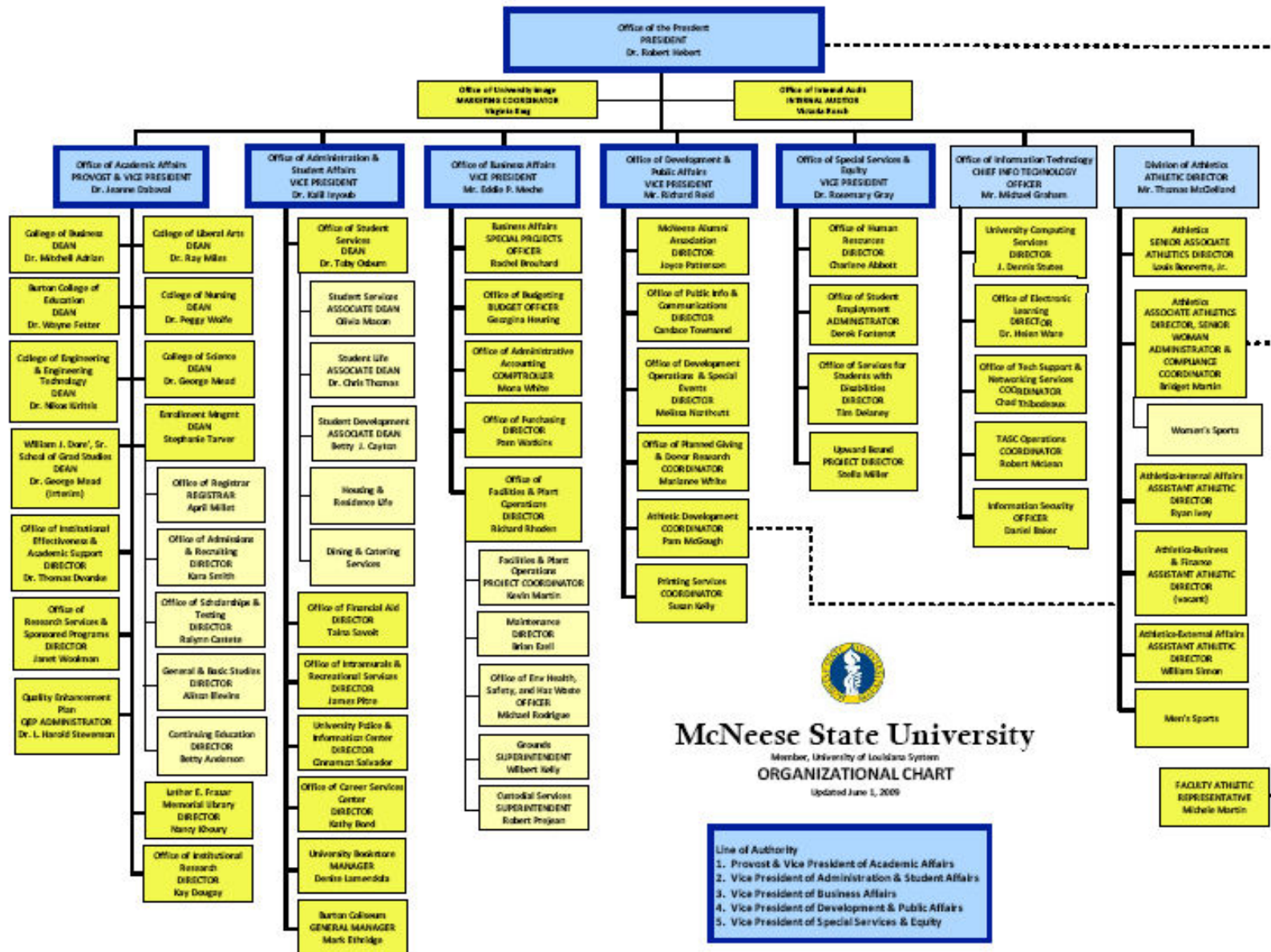
1. Foster a climate that enhances student learning, focuses on retention, values advising, and enriches the quality of campus-life.
2. Nurture an environment to support cultural diversity.
3. Present students opportunities for leadership.
4. Provide venues for learning to attract non-traditional students.
5. Provide an aesthetically-pleasing campus, functional facilities, and state-of-the-art equipment.

Fiscal Responsibility

1. Engage in continuous assessment, evaluation, and improvement.
2. Utilize the role of technology to increase the efficiency and effectiveness of campus operations.
3. Garner outside funding sources to support the University mission.
4. Capitalize of efficient use of resources.
5. Support efforts to obtain federal funding.

University-Community Alliances

1. Support mutually beneficial university/community collaborations.
2. Strengthen economic development through partnerships that provide technical assistance and information transfer to business and industry.
3. Enhance artistic, humanistic, and cultural opportunities in the area.
4. Retain certification and maintain competition in NCAA athletic programs
5. Partner with educational agencies to improve the quality of life in our region.



Accreditation

McNeese State University is accredited by the Commission on Colleges of the Southern Association of Colleges and Schools, 1866 Southern Lane, Decatur, Georgia 30033-4097, P-404.679.4500, www.sacscoc.org, to award associate, bachelor, master, and specialist degrees. A comprehensive list of other agencies included in the Board of Regents General Policy on Program Accreditation that have accredited or approved McNeese academic programs follows:

- AACSB International – The Association to Advance Collegiate Schools of Business International, 7777 South Harbor Island Blvd., Suite 750, Tampa, FL 33602-5730, P- (813) 769-6500, www.aacsb.edu/.
- AAFCS – American Association of Family and Consumer Sciences, 400 N. Columbus St., Suite 202, Alexandria, VA 22314, P- (703) 706-4600, www.aafcs.org.
- ACS – American Chemical Society, 1155 Sixteenth St. NW, Washington, DC 20036, P- (800) 227-5558, www.acs.org.
- CADE – Commission on Accreditation for Dietetics Education, American Dietetic Association, 120 S. Riverside Plaza, Suite 2000, Chicago, IL 60606-6995, P- (800)877-1600, www.eatright.org.
- CAC/ABET Inc. – Computing Accreditation Commission of the Accreditation Board of Engineering and Technology, 111 Market Place, Suite 1050, Baltimore, MD 21202-4012, P- (410) 347.7700, www.abet.org.
- CCNE – Commission on Collegiate Nursing Education for American Association of College of Nursing, One Dupont Circle, NW, Suite 530, Washington, DC 20036, P- (202)463-6930, www.aacn.nche.edu/index.htm.
- EAC/ABET Inc. – Engineering Accreditation Commission of the Accreditation Board of Engineering and Technology, 111 Market Place, Suite 1050, Baltimore, MD 21202-4012, P- (410) 347-7700, www.abet.org.
- JRCERT – Joint Review Committee on Education in Radiologic Technology, 20 N. Wacker Drive, Suite 2850, Chicago, IL 60606-3182, P- (312) 704-5300, www.jrcert.org.
- NAACLS – National Accrediting Agency for Clinical Laboratory Sciences, 8410 W. Bryn Mawr Ave., Suite 670, Chicago, IL 60631, P- (773) 714-8880, www.naacls.org.
- NASAD – National Association of Schools of Art and Design, 11250 Roger Bacon Dr., Suite 21, Reston, VA 20190, P-(703) 437-0700, <http://nasad.arts-accredit.org/>.
- NASM – National Association of Schools of Music, 11250 Roger Bacon Drive, Suite 21, Reston, VA 20190-5248, P-(703) 437-0700, <http://nasam.arts-accredit.org>.
- NCATE – National Council for Accreditation of Teacher Education, 2010 Massachusetts Ave. NW, Suite 500, Washington, DC 20036, P- (202) 466-7496, www.ncate.org.
- NLNAC – National League for Nursing Accrediting Commission, 61 Broadway, New York, NY 10006, P- (800) 669-1656, www.nln.org.
- TAC/ABET Inc. – Technology Accreditation Commission of the Accreditation Board of Engineering and Technology, 111 Market Place, Suite 1050, Baltimore, MD 21202-4012, P- (410) 347-7700, www.abet.org.

Other agencies that have approved or certified programs include:

- AAHPERD/NASPE – American Alliance for Health, Physical Education, Recreation and Dance/National Association for Sport and Physical Education
- ACEI – Association for Childhood Education International
- CEC – Council for Exceptional Children
- ISTE – International Society for Technology Education
- BESE – Louisiana Board of Elementary and Secondary Education
- ELCC – Educational Leaders Constituency Consortium
- LSBN – Louisiana State Board of Nursing
- NAEYC – National Association for the Education of Young Children
- NCAA – National Collegiate Athletic Association
- NCTE – National Council of Teachers of English
- NCTM – National Council of Teachers of Mathematics
- NSTA – National Science Teachers Association
- OAKE – Organization of American Kodály Educators

Inventory of Degree Programs

| General and Basic Studies | | |
|--|--|---------|
| | | |
| General Studies | | A.G.S. |
| General Studies | | B.G.S. |
| | | |
| College of Business | | |
| | | |
| Accounting | | B.S. |
| Business Administration | | M.B.A. |
| Finance | | B.S. |
| General Business Administration | | B.S. |
| Management | | B.S. |
| Marketing | | B.S. |
| | | |
| Burton College of Education | | |
| | | |
| Athletic Training | | B.S. |
| Business Education-Grades 6-12 | | B.S. |
| Curriculum and Instruction | | M.Ed. |
| Early Childhood Education-Grades PK-3 | | B.S. |
| Educational Leadership | | M.Ed. |
| Educational Leadership | | Ed.S. |
| Educational Technology Leadership | | M.Ed. |
| Elementary Education-Grades 1-5 | | B.S. |
| Elementary Education-Grades 1-5 | | M.A.T. |
| Health and Physical Education-Grades K-12 | | B.S. |
| Health and Human Performance, General | | B.S. |
| Health and Human Performance | | M.S. |
| Instructional Technology | | M.S. |
| Psychology | | B.S. |
| Psychology | | M.A. |
| School Counseling | | M.Ed. |
| Secondary Education-Grades 6-12 | | M.A.T. |
| Special Education | | M.Ed. |
| Special Education, General | | B.A. |
| Special Education Mild/Moderate-Grades 1-12 | | M.A.T. |
| | | |
| College of Engineering & Engineering Technology | | |
| | | |
| Engineering | | B.S. |
| Engineering | | M. Eng. |
| Engineering Technology | | A.S. |
| Engineering Technology | | B.S. |

| College of Liberal Arts | | |
|---|--|---------|
| Art | | B.A. |
| Art Education-Grades K-12 | | B.A. |
| Communication Studies | | B.A. |
| Communication Studies Education-Grades 6-12 | | B.S. |
| Creative Writing | | M.F.A. |
| Criminal Justice | | B.S. |
| English | | B.A. |
| English | | M.A. |
| English Education-Grades 6-12 | | B.A. |
| Foreign Languages Education-Grades 6-12 | | B.A. |
| French | | B.A. |
| Government | | B.A. |
| History | | B.A. |
| Liberal Studies | | B.A. |
| Mass Communication | | B.S. |
| Music Education- Instrumental Grades K-12 | | B.M.Ed. |
| Music Education-Vocal Grades K-12 | | B.M.Ed. |
| Music Performance | | B.M. |
| Paralegal Studies | | A.A. |
| Social Studies Education-Grades 6-12 | | B.A. |
| Sociology | | B.A. |
| Spanish | | B.A. |
| Theatre Arts | | B.A. |
| College of Nursing | | |
| Nursing | | A.D.N. |
| Nursing | | B.S.N. |
| Nursing | | M.S.N. |
| College of Science | | |
| Agricultural Education-Grades 6-12 | | B.S. |
| Agricultural Sciences | | B.S. |
| Biological Science | | B.S. |
| Biology Education-Grades 6-12 | | B.S. |
| Chemistry | | B.S. |
| Chemistry Education-Grades 6-12 | | B.S. |
| Clinical Laboratory Science | | B.S. |
| Computer Information Technology | | A.S. |
| Computer Science | | B.S. |
| Environmental and Chemical Sciences | | M.S. |
| Environmental Science Education-Grades 6-12 | | B.S. |
| Family and Consumer Sciences | | B.S. |
| Mathematics Education-Grades 6-12 | | B.S. |
| Mathematical Sciences | | M.S. |
| Mathematics | | B.S. |
| Radiologic Sciences | | B.S. |
| Physics | | B.S. |

This Page is Intentionally Left Blank

Fall Enrollment Fall 2009

Fall 2009 Enrollment by Level

| | <u>Enrollment</u> | <u>Percent</u> |
|---------------|-------------------|----------------|
| Undergraduate | 7,535 | 87.2% |
| Graduate | 1,110 | 12.8% |
| Total | 8,645 | 100.0% |

Fall 2009 Full-Time Equivalent Enrollment by Level

| | <u>SCH's</u> | <u>FTE</u> | <u>Percent</u> |
|---------------|----------------|--------------------|----------------|
| Undergraduate | 102,175 | 8,514.6 (12 hours) | 90.8% |
| Graduate | 7,754 | 861.6 (9 hours) | 9.2% |
| Total | 109,929 | 9,376.2 | 100.0% |

Fall 2009 Enrollment by Rank

| | <u>Enrollment</u> | <u>Percent</u> |
|-----------------------|-------------------|----------------|
| Early Admissions | 486 | 5.6% |
| Freshman | 2,617 | 30.3% |
| Sophomore | 1,338 | 15.5% |
| Junior | 1,197 | 13.8% |
| Senior | 1,866 | 21.6% |
| Masters Candidate | 843 | 9.8% |
| Education Specialist | 11 | .1% |
| Special Graduate | 254 | 2.9% |
| Non-Credit/Non-Degree | 33 | .4% |
| Total | 8,645 | 100.0% |

Fall 2009 Enrollment by Full-Time/Part-Time Status

| | <u>Undergraduate</u> | <u>Graduate</u> | <u>Total</u> | <u>Percent</u> |
|--------------|----------------------|-----------------|--------------|----------------|
| Full-Time | 5,967 | 439 | 6,406 | 74.1% |
| Part-Time | 1,568 | 671 | 2,239 | 25.9% |
| Total | 7,535 | 1,110 | 8,645 | 100.0% |

Fall 2009 Enrollment by Current Entry Status

| | <u>Undergraduate</u> | <u>Graduate</u> | <u>Total</u> | <u>Percent</u> |
|---------------------|----------------------|-----------------|--------------|----------------|
| Early Admissions | 486 | | 486 | 5.6% |
| Continuing | 4,955 | 771 | 5,726 | 66.2% |
| First-Time Freshmen | 1,317 | | 1,317 | 15.2% |
| New Graduate | | 244 | 244 | 2.8% |
| Re-Entry | 341 | 53 | 394 | 4.6% |
| Transfer | 422 | 42 | 464 | 5.4% |
| Other Undergraduate | 2 | | 2 | .1% |
| Visiting | 12 | | 12 | .1% |
| Total | 7,535 | 1,110 | 8,645 | 100.0% |

Fall 2009 Enrollment by Gender

| | <u>Undergraduate</u> | <u>Graduate</u> | <u>Total</u> | <u>Percent</u> |
|--------------|----------------------|-----------------|--------------|----------------|
| Female | 4,626 | 760 | 5,386 | 62.3% |
| Male | 2,909 | 350 | 3,259 | 37.7% |
| Total | 7,535 | 1,110 | 8,645 | 100.0% |

Fall 2009 Enrollment by Ethnicity

| | <u>Undergraduate</u> | <u>Graduate</u> | <u>Total</u> | <u>Percent</u> |
|---------------------------|----------------------|-----------------|--------------|----------------|
| Amer Indian/Alaska Native | 58 | 5 | 63 | .7% |
| Asian/Pacific Islander | 94 | 12 | 106 | 1.2% |
| Black | 1,351 | 141 | 1,492 | 17.3% |
| Foreign | 265 | 173 | 438 | 5.1% |
| Hispanic | 102 | 12 | 114 | 1.3% |
| White | 5,590 | 757 | 6,347 | 73.4% |
| Race/Ethnicity Unknown | 75 | 10 | 85 | 1.0% |
| Total | 7,535 | 1,110 | 8,645 | 100.0% |

Fall 2009 Enrollment by Gender and Ethnicity

| | <u>Female</u> | <u>Male</u> | <u>Total</u> | <u>Percent</u> |
|---------------------------|----------------------|---------------------|---------------------|-----------------------|
| Amer Indian/Alaska Native | 37 | 26 | 63 | .7% |
| Asian/Pacific Islander | 58 | 48 | 106 | 1.2% |
| Black | 1,007 | 485 | 1,492 | 17.3% |
| Foreign | 174 | 264 | 438 | 5.1% |
| Hispanic | 76 | 38 | 114 | 1.3% |
| White | 3,988 | 2,359 | 6,347 | 73.4% |
| Race/Ethnicity Unknown | 46 | 39 | 85 | 1.0% |
| <i>Total</i> | <i>5,386</i> | <i>3,259</i> | <i>8,645</i> | <i>100.0%</i> |

Fall 2009 Undergraduate Enrollment by Gender and Ethnicity

| | <u>Female</u> | <u>Male</u> | <u>Total</u> | <u>Percent</u> |
|---------------------------|----------------------|---------------------|---------------------|-----------------------|
| Amer Indian/Alaska Native | 32 | 26 | 58 | .8% |
| Asian/Pacific Islander | 52 | 42 | 94 | 1.2% |
| Black | 892 | 459 | 1,351 | 17.9% |
| Foreign | 120 | 145 | 265 | 3.5% |
| Hispanic | 68 | 34 | 102 | 1.4% |
| White | 3,421 | 2,169 | 5,590 | 74.2% |
| Race/Ethnicity Unknown | 41 | 34 | 75 | 1.0% |
| <i>Total</i> | <i>4,626</i> | <i>2,909</i> | <i>7,535</i> | <i>100.0%</i> |

Fall 2009 Graduate Enrollment by Gender and Ethnicity

| | <u>Female</u> | <u>Male</u> | <u>Total</u> | <u>Percent</u> |
|---------------------------|----------------------|--------------------|---------------------|-----------------------|
| Amer Indian/Alaska Native | 5 | | 5 | .4% |
| Asian/Pacific Islander | 6 | 6 | 12 | 1.1% |
| Black | 115 | 26 | 141 | 12.7% |
| Foreign | 54 | 119 | 173 | 15.6% |
| Hispanic | 8 | 4 | 12 | 1.1% |
| White | 567 | 190 | 757 | 68.2% |
| Race/Ethnicity Unknown | 5 | 5 | 10 | .9% |
| <i>Total</i> | <i>760</i> | <i>350</i> | <i>1,110</i> | <i>100.0%</i> |

Fall 2009 Undergraduate Enrollment by Rank and Ethnicity

| | <u>EA</u> | <u>FR</u> | <u>SO</u> | <u>JR</u> | <u>SR</u> | <u>ND</u> | <u>Total</u> |
|---------------------------|------------|--------------|--------------|--------------|--------------|-----------|--------------|
| Amer Indian/Alaska Native | 4 | 21 | 5 | 10 | 16 | 2 | 58 |
| Asian/Pacific Islander | 8 | 30 | 17 | 11 | 27 | 1 | 94 |
| Black | 50 | 545 | 219 | 212 | 324 | 1 | 1,351 |
| Foreign | 1 | 80 | 72 | 49 | 59 | 4 | 265 |
| Hispanic | 3 | 37 | 20 | 14 | 27 | 1 | 102 |
| White | 408 | 1,881 | 988 | 893 | 1,398 | 22 | 5,590 |
| Race/Ethnicity Unknown | 12 | 23 | 17 | 8 | 15 | | 75 |
| Total | 486 | 2,617 | 1,338 | 1,197 | 1,866 | 31 | 7,535 |

EA – Early Admissions
FR – Freshman
SO – Sophomore

JR – Junior
SR – Senior
ND – Non-Credit/Non-Degree

Fall 2009 Graduate Enrollment by Rank and Ethnicity

| | <u>MC</u> | <u>ES</u> | <u>SG</u> | <u>ND</u> | <u>Total</u> |
|---------------------------|------------|-----------|------------|-----------|--------------|
| Amer Indian/Alaska Native | 3 | | 2 | | 5 |
| Asian/Pacific Islander | 10 | | 2 | | 12 |
| Black | 90 | 4 | 47 | | 141 |
| Foreign | 171 | | 2 | | 173 |
| Hispanic | 10 | | 2 | | 12 |
| White | 553 | 7 | 195 | 2 | 757 |
| Race/Ethnicity Unknown | 6 | | 4 | | 10 |
| Total | 843 | 11 | 254 | 2 | 1,110 |

MC – Masters Candidate
ES – Education Specialist

SG – Special Graduate
ND – Non-Credit/Non-Degree

Fall 2009 Admissions Scores First-Time Full-Time Graduates

| <u>Test</u> | <u>Average</u> |
|---------------------------|----------------|
| GMAT Total | 478 |
| GRE Combined Verbal/Quant | 940 |

Fall 2009 Enrollment by Age

| | <u>Undergraduate</u> | <u>Graduate</u> | <u>Total</u> | <u>Percent</u> |
|--------------|----------------------|-----------------|--------------|----------------|
| Under 18 | 509 | | 509 | 5.9% |
| 18 – 19 | 2,116 | | 2,116 | 24.5% |
| 20 – 21 | 1,847 | 5 | 1,852 | 21.4% |
| 22 – 24 | 1,448 | 287 | 1,735 | 20.1% |
| 25 – 29 | 746 | 330 | 1,076 | 12.4% |
| 30 – 34 | 363 | 170 | 533 | 6.2% |
| 35 – 39 | 210 | 101 | 311 | 3.6% |
| 40 – 49 | 217 | 142 | 359 | 4.1% |
| 50 – 64 | 73 | 71 | 144 | 1.7% |
| Over 64 | 6 | 4 | 10 | .1% |
| Total | 7,535 | 1,110 | 8,645 | 100.0% |

Fall 2009 Enrollment by Age Group

| | <u>Undergraduate</u> | <u>Graduate</u> | <u>Total</u> | <u>Percent</u> |
|--------------|----------------------|-----------------|--------------|----------------|
| Under 25 | 5,920 | 292 | 6,212 | 71.9% |
| 25 and Older | 1,615 | 818 | 2,433 | 28.1% |
| Total | 7,535 | 1,110 | 8,645 | 100.0% |

Fall 2009 Average Age

| | <u>Average Age</u> | <u>Median Age</u> |
|---------------------|--------------------|-------------------|
| All Students | 23.9 | 21 |
| First-Time Freshmen | 18.9 | 18 |
| Undergraduate | 22.7 | 21 |
| Graduate | 31.6 | 28 |

Fall 2009 Enrollment by Parish of Origin

| <u>Parish</u> | <u>Enrollment</u> | | <u>Parish</u> | <u>Enrollment</u> |
|------------------------|-------------------|--|------------------------------|-------------------|
| Acadia | 215 | | St Landry | 147 |
| Allen | 300 | | St Martin | 43 |
| Ascension | 19 | | St Mary | 29 |
| Assumption | 7 | | St Tammany | 37 |
| Avoyelles | 7 | | Tangipahoa | 10 |
| Beauregard | 530 | | Terrebonne | 18 |
| Bienville | 1 | | Vermilion | 123 |
| Bossier | 10 | | Vernon | 158 |
| Caddo | 24 | | Washington | 7 |
| Calcasieu | 4,460 | | Webster | 2 |
| Cameron | 244 | | West Baton Rouge | 4 |
| Catahoula | 1 | | West Carroll | 2 |
| Concordia | 3 | | West Feliciana | 8 |
| DeSoto | 6 | | Winn | 2 |
| East Baton Rouge | 54 | | | |
| East Feliciana | 1 | | Total Louisiana | 7,647 |
| Evangeline | 123 | | % of Total Enrollment | 88.5% |
| Franklin | 1 | | Number of Parishes | 57 |
| Grant | 23 | | | |
| Iberia | 42 | | | |
| Iberville | 8 | | Five Parish Total | 6,066 |
| Jackson | 3 | | % of Total Enrollment | 70.2% |
| Jefferson | 29 | | | |
| Jefferson Davis | 532 | | | |
| Lafayette | 137 | | | |
| Lafourche | 11 | | | |
| LaSalle | 4 | | | |
| Lincoln | 4 | | | |
| Livingston | 18 | | | |
| Madison | 2 | | | |
| Morehouse | 4 | | | |
| Natchitoches | 16 | | | |
| Orleans | 39 | | | |
| Ouachita | 23 | | | |
| Plaquemines | 6 | | | |
| Pointe Coupee | 43 | | | |
| Rapides | 66 | | | |
| Sabine | 15 | | | |
| St Bernard | 3 | | | |
| St Charles | 12 | | | |
| St Helena | 1 | | | |
| St James | 6 | | | |
| St John | 4 | | | |

Fall 2009 Enrollment by State of Origin

| State | Enrollment |
|---|------------|
| Alabama | 2 |
| Alaska | 1 |
| Arizona | 3 |
| Arkansas | 3 |
| California | 7 |
| Colorado | 4 |
| Connecticut | 1 |
| Florida | 8 |
| Georgia | 5 |
| Idaho | 1 |
| Illinois | 3 |
| Indiana | 3 |
| Iowa | 3 |
| Kansas | 2 |
| Louisiana | 7,647 |
| Maine | 1 |
| Maryland | 2 |
| Massachusetts | 1 |
| Michigan | 4 |
| Minnesota | 4 |
| Mississippi | 14 |
| Missouri | 3 |
| Nevada | 1 |
| New Jersey | 2 |
| New Mexico | 2 |
| New York | 3 |
| North Carolina | 3 |
| Ohio | 3 |
| Oklahoma | 11 |
| Oregon | 1 |
| Pennsylvania | 3 |
| Rhode Island | 1 |
| South Carolina | 2 |
| Tennessee | 3 |
| Texas | 391 |
| Virginia | 6 |
| Washington | 4 |
| Wisconsin | 3 |
| Total | 8,161 |
| | |
| Total Out of State | 514 |
| % Out of State of Total Enrollment | 5.9% |
| Number of States (Other than Louisiana) | 37 |
| | |

Fall 2009 Enrollment by Foreign Country of Origin

| <u>Country</u> | <u>Enrollment</u> | | <u>Country</u> | <u>Enrollment</u> |
|--------------------|-------------------|--|---|-------------------|
| Argentina | 1 | | Taiwan | 8 |
| Azerbaijan | 2 | | Thailand | 15 |
| Bangladesh | 1 | | Trinidad and Tobago | 2 |
| Belgium | 1 | | Turkey | 7 |
| Benin | 1 | | Ukraine | 2 |
| Bolivia | 8 | | United Kingdom | 5 |
| Bulgaria | 1 | | Venezuela | 2 |
| Cambodia | 2 | | Vietnam | 53 |
| Cameroon | 2 | | | |
| Canada | 6 | | Total Foreign | 484 |
| Chile | 1 | | % of Total Enrollment | 5.6% |
| China | 58 | | Number of Countries (Other than USA) | 52 |
| Colombia | 13 | | | |
| Croatia | 2 | | | |
| Ecuador | 9 | | | |
| Ethiopia | 1 | | | |
| France | 5 | | | |
| Germany | 2 | | | |
| Ghana | 1 | | | |
| Honduras | 4 | | | |
| India | 103 | | | |
| Indonesia | 22 | | | |
| Ireland | 5 | | | |
| Israel | 3 | | | |
| Jamaica | 2 | | | |
| Kenya | 3 | | | |
| Korea, Republic of | 13 | | | |
| Lithuania | 1 | | | |
| Macedonia | 1 | | | |
| Mexico | 8 | | | |
| Mongolia | 1 | | | |
| Nepal | 72 | | | |
| New Zealand | 1 | | | |
| Nigeria | 10 | | | |
| Pakistan | 5 | | | |
| Panama | 1 | | | |
| Peru | 5 | | | |
| Philippines | 3 | | | |
| Portugal | 1 | | | |
| Romania | 2 | | | |
| Russia | 2 | | | |
| Saudi Arabia | 2 | | | |
| Serbia | 1 | | | |
| South Africa | 2 | | | |

Fall 2009 Undergraduate Enrollment by Residency

| | <u>Part-Time</u> | <u>Full-Time</u> | <u>Total</u> | <u>Percent</u> |
|---------------------|-------------------------|-------------------------|---------------------|-----------------------|
| Louisiana | 1,516 | 5,262 | 6,778 | 89.9% |
| Out of state | 39 | 419 | 458 | 6.1% |
| Foreign | 13 | 286 | 299 | 4.0% |
| <i>Total</i> | <i>1,568</i> | <i>5,967</i> | <i>7,535</i> | <i>100.0%</i> |

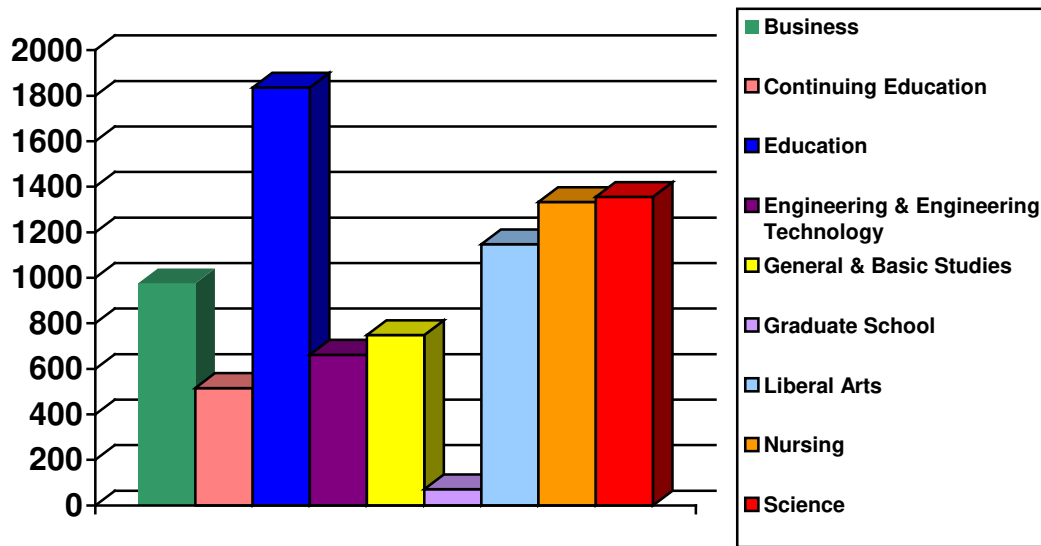
Fall 2009 Graduate Enrollment by Residency

| | <u>Part-Time</u> | <u>Full-Time</u> | <u>Total</u> | <u>Percent</u> |
|---------------------|-------------------------|-------------------------|---------------------|-----------------------|
| Louisiana | 614 | 255 | 869 | 78.3% |
| Out of state | 22 | 34 | 56 | 5.0% |
| Foreign | 35 | 150 | 185 | 16.7% |
| <i>Total</i> | <i>671</i> | <i>439</i> | <i>1,110</i> | <i>100.0%</i> |

This Page is Intentionally Left Blank

Fall 2009 Enrollment by College

| | <u>Undergraduate</u> | <u>Graduate</u> | <u>Total</u> | <u>Percent</u> |
|--------------------------------------|----------------------|-----------------|--------------|----------------|
| Business | 871 | 105 | 976 | 11.3% |
| Continuing Education | 505 | 11 | 516 | 6.0% |
| Education | 1,214 | 622 | 1,836 | 21.2% |
| Engineering & Engineering Technology | 582 | 80 | 662 | 7.6% |
| General & Basic Studies | 749 | | 749 | 8.7% |
| Graduate School | | 71 | 71 | .8% |
| Liberal Arts | 1,113 | 34 | 1,147 | 13.3% |
| Nursing | 1,244 | 89 | 1,333 | 15.4% |
| Science | 1,257 | 98 | 1,355 | 15.7% |
| Total | 7,535 | 1,110 | 8,645 | 100.0% |



Historical Fall Undergraduate Enrollment by College

| | <u>2005</u> | <u>2006</u> | <u>2007</u> | <u>2008</u> | <u>2009</u> |
|--------------------------------------|--------------|--------------|--------------|--------------|--------------|
| Business | 1,088 | 1,071 | 975 | 1,013 | 871 |
| Continuing Education* | 15 | 10 | 12 | 10 | 505 |
| Education | 1,340 | 1,218 | 1,168 | 1,143 | 1,214 |
| Engineering & Engineering Technology | 515 | 529 | 528 | 579 | 582 |
| General & Basic Studies* | 1,206 | 1,017 | 1,010 | 1,099 | 749 |
| Liberal Arts | 1,216 | 1,103 | 1,004 | 1,037 | 1,113 |
| Nursing | 1,193 | 1,133 | 1,139 | 1,181 | 1,244 |
| Science | 1,274 | 1,255 | 1,217 | 1,220 | 1,257 |
| Total | 7,847 | 7,336 | 7,053 | 7,282 | 7,535 |

* In Fall 2009, Early Admissions was moved from General & Basic Studies to Continuing Education.

Historical Fall Graduate Enrollment by College

| | <u>2005</u> | <u>2006</u> | <u>2007</u> | <u>2008</u> | <u>2009</u> |
|--------------------------------------|--------------|--------------|--------------|--------------|--------------|
| Business | 73 | 74 | 80 | 99 | 105 |
| Continuing Education | 18 | 16 | 20 | 12 | 11 |
| Education | 640 | 570 | 576 | 567 | 622 |
| Engineering & Engineering Technology | 84 | 78 | 100 | 71 | 80 |
| Graduate School | 154 | 96 | 54 | 77 | 71 |
| Liberal Arts | 37 | 34 | 34 | 38 | 34 |
| Nursing | 66 | 58 | 82 | 88 | 89 |
| Science | 73 | 81 | 96 | 60 | 98 |
| Total | 1,145 | 1,007 | 1,042 | 1,012 | 1,110 |

Fall 2009 Enrollment by College and Department

| <u>College</u> | <u>Department Name</u> | <u>Undergraduate</u> | <u>Graduate</u> | <u>Total</u> |
|---|--------------------------------|----------------------|-----------------|--------------|
| Business | Accounting, Fin, & Economics | 342 | | 342 |
| | Mgmt, Marketing and Gen Bus | 529 | 105 | 634 |
| <i>College of Business Total</i> | | 871 | 105 | 976 |
| | | | | |
| Continuing Education | Continuing Education | 505 | 11 | 516 |
| <i>Continuing Education Total</i> | | 505 | 11 | 516 |
| | | | | |
| Education | Educ Leadership & Instr Tech | 29 | 124 | 153 |
| | Health & Human Performance | 418 | 46 | 464 |
| | Psychology | 241 | 64 | 305 |
| | Teacher Education | 526 | 388 | 914 |
| <i>College of Education Total</i> | | 1,214 | 622 | 1,836 |
| | | | | |
| Engineering & Engineering Technology | Engineering | 430 | 80 | 510 |
| | Engineering Technology | 152 | | 152 |
| <i>College of Engineering & Engineering Technology Total</i> | | 582 | 80 | 662 |
| | | | | |
| General & Basic Studies | Basic Studies | 749 | | 749 |
| <i>General & Basic Studies Total</i> | | 749 | | 749 |
| | | | | |
| Graduate School | Graduate School | | 71 | 71 |
| <i>Graduate School Total</i> | | | 71 | 71 |
| | | | | |
| Liberal Arts | English & Foreign Languages | 134 | 30 | 164 |
| | History | 150 | | 150 |
| | Mass Communication | 164 | | 164 |
| | Performing Arts | 120 | 4 | 124 |
| | Social Sciences | 367 | | 367 |
| | Visual Arts | 178 | | 178 |
| <i>College of Liberal Arts Total</i> | | 1,113 | 34 | 1,147 |
| | | | | |
| Nursing | Graduate Nursing | | 89 | 89 |
| | Undergraduate Nursing | 1,244 | | 1,244 |
| <i>College of Nursing Total</i> | | 1,244 | 89 | 1,333 |
| | | | | |
| Science | Agriculture | 305 | 25 | 330 |
| | Biology & Health Sciences | 532 | | 532 |
| | Chemistry | 111 | 18 | 129 |
| | Math, Computer Science, & Stat | 180 | 55 | 235 |
| | Nutrition and Family Studies | 110 | | 110 |
| | Physics | 19 | | 19 |
| <i>College of Science Total</i> | | 1,257 | 98 | 1,355 |
| | | | | |
| University Total | | 7,535 | 1,110 | 8,645 |

Historical Fall Undergraduate Enrollment by College and Department

| College | Department Name | 2005 | 2006 | 2007 | 2008 | 2009 |
|--|--------------------------------|--------------|--------------|--------------|--------------|--------------|
| Business | Accounting, Fin, & Economics | 376 | 370 | 335 | 349 | 342 |
| | Mgmt, Marketing and Gen Bus | 712 | 701 | 640 | 664 | 529 |
| College of Business Total | | 1,088 | 1,071 | 975 | 1,013 | 871 |
| | | | | | | |
| Continuing Education | Continuing Education | 15 | 10 | 12 | 10 | 505 |
| Continuing Education Total | | 15 | 10 | 12 | 10 | 505 |
| | | | | | | |
| Education | Educ Leadership & Instr Tech | 20 | 21 | 20 | 20 | 29 |
| | Health & Human Performance | 396 | 368 | 381 | 394 | 418 |
| | Psychology | 257 | 233 | 244 | 238 | 241 |
| | Teacher Education | 667 | 596 | 523 | 491 | 526 |
| College of Education Total | | 1,340 | 1,218 | 1,168 | 1,143 | 1,214 |
| | | | | | | |
| Engineering & Engineering Technology | Engineering | 353 | 361 | 372 | 409 | 430 |
| | Engineering Technology | 162 | 168 | 156 | 170 | 152 |
| College of Engineering & Engineering Technology Total | | 515 | 529 | 528 | 579 | 582 |
| | | | | | | |
| General & Basic Studies | Basic Studies | 1,206 | 1,017 | 1,010 | 1,099 | 749 |
| Gen & Basic Studies Total | | 1,206 | 1,017 | 1,010 | 1,099 | 749 |
| | | | | | | |
| Liberal Arts | English & Foreign Languages | 138 | 135 | 131 | 141 | 134 |
| | History | 152 | 129 | 132 | 129 | 150 |
| | Mass Communication | 209 | 186 | 154 | 164 | 164 |
| | Performing Arts | 115 | 110 | 99 | 104 | 120 |
| | Social Sciences | 431 | 369 | 317 | 327 | 367 |
| | Visual Arts | 171 | 174 | 171 | 172 | 178 |
| College of Liberal Arts Total | | 1,216 | 1,103 | 1,004 | 1,037 | 1,113 |
| | | | | | | |
| Nursing | Undergraduate Nursing | 1,193 | 1,133 | 1,139 | 1,181 | 1,244 |
| College of Nursing Total | | 1,193 | 1,133 | 1,139 | 1,181 | 1,244 |
| | | | | | | |
| Science | Agriculture* | 211 | 214 | 225 | 236 | 305 |
| | Biological & Envr Sciences* | 589 | 619 | 608 | 600 | |
| | Biology & Health Sciences* | | | | | 532 |
| | Chemistry | 106 | 102 | 91 | 108 | 111 |
| | Math, Computer Science, & Stat | 188 | 164 | 165 | 170 | 180 |
| | Nutrition and Family Studies | 171 | 145 | 118 | 97 | 110 |
| | Physics | 9 | 11 | 10 | 9 | 19 |
| College of Science Total | | 1,274 | 1,255 | 1,217 | 1,220 | 1,257 |
| University Total | | 7,847 | 7,336 | 7,053 | 7,282 | 7,535 |

*In Fall 2009 Environmental Science enrollment was moved from Biological & Environmental Sciences to Agriculture.

Historical Fall Graduate Enrollment by College and Department

| College | Department Name | 2005 | 2006 | 2007 | 2008 | 2009 |
|---|--------------------------------|--------------|--------------|--------------|--------------|--------------|
| Business | Mgmt, Marketing and Gen Bus | 73 | 74 | 80 | 99 | 105 |
| <i>College of Business Total</i> | | 73 | 74 | 80 | 99 | 105 |
| Continuing Education | Continuing Education | 18 | 16 | 20 | 12 | 11 |
| <i>Continuing Education Total</i> | | 18 | 16 | 20 | 12 | 11 |
| Education | Educ Leadership & Instr Tech | 203 | 138 | 117 | 115 | 124 |
| | Health & Human Performance | 28 | 26 | 26 | 39 | 46 |
| | Psychology | 75 | 53 | 67 | 63 | 64 |
| | Teacher Education | 334 | 353 | 366 | 350 | 388 |
| <i>College of Education Total</i> | | 640 | 570 | 576 | 567 | 622 |
| Engineering & Engineering Tech | Engineering | 84 | 78 | 100 | 71 | 80 |
| <i>College of Engineering & Engineering Technology Total</i> | | 84 | 78 | 100 | 71 | 80 |
| Graduate School | Graduate School | 154 | 96 | 54 | 77 | 71 |
| <i>Graduate School Total</i> | | 154 | 96 | 54 | 77 | 71 |
| Liberal Arts | English & Foreign Languages | 36 | 28 | 28 | 33 | 30 |
| | Performing Arts | 1 | 6 | 6 | 5 | 4 |
| <i>College of Liberal Arts Total</i> | | 37 | 34 | 34 | 38 | 34 |
| Nursing | Graduate Nursing | 66 | 58 | 82 | 88 | 89 |
| <i>College of Nursing Total</i> | | 66 | 58 | 82 | 88 | 89 |
| Science | Agriculture* | 3 | 7 | 8 | 11 | 25 |
| | Biological & Envr Sciences* | 14 | 9 | 7 | 9 | |
| | Chemistry | 18 | 19 | 11 | 14 | 18 |
| | Math, Computer Science, & Stat | 30 | 38 | 62 | 26 | 55 |
| | Nutrition and Family Studies | 8 | 8 | 8 | | |
| <i>College of Science Total</i> | | 73 | 81 | 96 | 60 | 98 |
| University Total | | 1,145 | 1,007 | 1,042 | 1,012 | 1,110 |

*In Fall 2009 Environmental Science enrollment was moved from Biological & Environmental Sciences to Agriculture.

Fall 2009 Enrollment by Department and Major

| <u>College/Department</u> | <u>Major</u> | <u>Undergraduate</u> | <u>Graduate</u> | <u>Total</u> |
|-----------------------------------|---------------------------------------|----------------------|-----------------|--------------|
| Business | | | | |
| Accounting, Fin & Economics | Accounting | 254 | | 254 |
| | Finance | 87 | | 87 |
| | Undeclared | 1 | | 1 |
| <i>Department Total</i> | | <i>342</i> | | <i>342</i> |
| Mgmt, Marketing, & Gen Bus | Business Administration | | 105 | 105 |
| | Gen Business Administration | 196 | | |
| | Management | 198 | | |
| | Marketing | 130 | | |
| | Undeclared | 5 | | |
| <i>Department Total</i> | | <i>529</i> | <i>105</i> | <i>634</i> |
| College of Business Total | | 871 | 105 | 976 |
| Continuing Education | | | | |
| Continuing Education | EASE Program | 19 | 11 | 30 |
| | Undeclared | 486 | | 486 |
| <i>Department Total</i> | | <i>505</i> | <i>11</i> | <i>516</i> |
| Continuing Education Total | | 505 | 11 | 516 |
| Education | | | | |
| Educ Leadership & Instr Tech | Business Education – Grades 6-12 | 29 | | 29 |
| | Educational Leadership | | 76 | 76 |
| | Educational Technology Leadership | | 23 | 23 |
| | Instructional Technology | | 25 | 25 |
| <i>Department Total</i> | | <i>29</i> | <i>124</i> | <i>153</i> |
| Health & Human Performance | Athletic Training | 46 | | 46 |
| | Health & Human Performance | | 46 | 46 |
| | Health & Human Performance, Education | 8 | | 8 |
| | Health & Human Performance, General | 211 | | 211 |
| | Health & Physical Education, Gr K-12 | 152 | | 152 |
| | Undeclared | 1 | | 1 |
| <i>Department Total</i> | | <i>418</i> | <i>46</i> | <i>464</i> |
| Psychology | Psychology | 241 | 64 | 305 |
| <i>Department Total</i> | | <i>241</i> | <i>64</i> | <i>305</i> |

Fall 2009 Enrollment by Department and Major (continued)

| <u>College/Department</u> | <u>Major</u> | <u>Undergraduate</u> | <u>Graduate</u> | <u>Total</u> |
|---|---|----------------------|-------------------|---------------------|
| Teacher Education | Add-on Teacher Certification | | 19 | 19 |
| | Alt Certification – Grades 1-12 Mild/Moderate Sp Ed | | 25 | 25 |
| | Alt Certification – Grades K-12 Health & Physical Ed | | 11 | 11 |
| | Alt Certification – Grades 1-5 | | 52 | 52 |
| | Alt Certification – Grade 6-12 | | 38 | 38 |
| | Alt Certification – K-12 Art Ed | | 4 | 4 |
| | Alt Certification – Grades PK-3 | | 25 | 25 |
| | Curriculum and Instruction | | 13 | 13 |
| | Early Childhood Education | 1 | | 1 |
| | Early Childhood Educ – Grades PK- 3 | 252 | | 252 |
| | Elementary Education | 1 | | 1 |
| | Elementary Education – Grades 1–5 | 247 | 64 | 311 |
| | School Counseling | | 27 | 27 |
| | Secondary Education Grades 6-12 | | 81 | 81 |
| | Special Education, Mild/Mod Gr 1-12 | | 25 | 25 |
| | Special Education | | 4 | 4 |
| | Special Education, General | 24 | | 24 |
| | Undeclared | 1 | | 1 |
| <i>Department Total</i> | | 526 | 388 | 914 |
| | | | | |
| <i>College of Education Total</i> | | <i>1,214</i> | <i>622</i> | <i>1,836</i> |
| | | | | |
| Engineering & Engineering Technology | | | | |
| | | | | |
| Engineering | Engineering | 430 | 80 | 510 |
| <i>Department Total</i> | | 430 | 80 | 510 |
| | | | | |
| Engineering Technology | Engineering Technology | 151 | | 151 |
| | Undeclared | 1 | | 1 |
| <i>Department Total</i> | | 152 | | 152 |
| | | | | |
| <i>College of Engineering & Engineering Technology Total</i> | | <i>582</i> | <i>80</i> | <i>662</i> |
| | | | | |
| General & Basic Studies | | | | |
| | | | | |
| Basic Studies | Basic Studies | 228 | | 228 |
| | General Studies | 521 | | 521 |
| <i>Department Total</i> | | 749 | | 749 |
| | | | | |
| <i>General & Basic Studies Total</i> | | <i>749</i> | | <i>749</i> |

Fall 2009 Enrollment by Department and Major (continued)

| <u>College/Department</u> | <u>Major</u> | <u>Undergraduate</u> | <u>Graduate</u> | <u>Total</u> |
|------------------------------|------------------------------------|----------------------|-----------------|--------------|
| Graduate School | | | | |
| Graduate School | Non-degree | | 71 | 71 |
| <i>Department Total</i> | | | <i>71</i> | <i>71</i> |
| Graduate School Total | | | 71 | 71 |
| Liberal Arts | | | | |
| English & Foreign Languages | Creative Writing | | 20 | 20 |
| | English | 60 | 10 | 70 |
| | English Education Grades 6 – 12 | 54 | | 54 |
| | Foreign Language Education Gr 6-12 | 10 | | 10 |
| | French | 2 | | 2 |
| | Spanish | 8 | | 8 |
| <i>Department Total</i> | | <i>134</i> | <i>30</i> | <i>164</i> |
| History | History | 58 | | 58 |
| | Liberal Studies | 29 | | 29 |
| | Social Studies Education Gr 6 – 12 | 63 | | 63 |
| <i>Department Total</i> | | <i>150</i> | | <i>150</i> |
| Mass Communication | Communication Studies | 1 | | 1 |
| | Mass Communication | 154 | | 154 |
| | Speech | 5 | | 5 |
| | Speech Education Grades 6-12 | 4 | | 4 |
| <i>Department Total</i> | | <i>164</i> | | <i>164</i> |
| Performing Arts | Music Education | 3 | 4 | 7 |
| | Music Educ–Instrumental, Gr K–12 | 62 | | 62 |
| | Music Education – Vocal, Gr 6 – 12 | 20 | | 20 |
| | Music Performance | 21 | | 21 |
| | Theatre Arts | 14 | | 14 |
| <i>Department Total</i> | | <i>120</i> | <i>4</i> | <i>124</i> |
| Social Sciences | Criminal Justice | 218 | | 218 |
| | General Studies | 3 | | 3 |
| | Government | 39 | | 39 |
| | Paralegal Studies | 32 | | 32 |
| | Sociology | 74 | | 74 |
| | Undeclared | 1 | | 1 |
| <i>Department Total</i> | | <i>367</i> | | <i>367</i> |

Fall 2009 Enrollment by Department and Major (continued)

| <u>College/Department</u> | <u>Major</u> | <u>Undergraduate</u> | <u>Graduate</u> | <u>Total</u> |
|--------------------------------------|--|----------------------|-----------------|--------------|
| Visual Arts | Art | 141 | | 141 |
| | Art Education | 4 | | 4 |
| | Art Education – Grades K – 12 | 31 | | 31 |
| | General Studies | 2 | | 2 |
| <i>Department Total</i> | | <i>178</i> | | <i>178</i> |
| College of Liberal Arts Total | | 1,113 | 34 | 1,147 |
| Nursing | | | | |
| Graduate Nursing | Nursing | | 89 | 89 |
| <i>Department Total</i> | | | <i>89</i> | <i>89</i> |
| Undergraduate Nursing | Nursing | 1,244 | | 1,244 |
| | Undeclared | | | |
| <i>Department Total</i> | | <i>1,244</i> | | <i>1,244</i> |
| College of Nursing Total | | 1,244 | 89 | 1,333 |
| Science | | | | |
| Agriculture | Agricultural Education – Grs 6 – 12 | 21 | | 21 |
| | Agricultural Sciences | 213 | | 213 |
| | Environmental & Chemical Sciences | | 25 | 25 |
| | Environmental Science | 29 | | 29 |
| | Environmental Science Education Grades 6-12 | 3 | | 3 |
| | Undeclared | 1 | | 1 |
| | Wildlife Management | 38 | | 38 |
| <i>Department Total</i> | | <i>305</i> | <i>25</i> | <i>330</i> |
| Biology & Health Sciences | Biological Science | 257 | | 257 |
| | Biology Education – Grades 6 – 12 | 18 | | 18 |
| | Clinical Laboratory Science | 61 | | 61 |
| | Radiologic Technology | 196 | | 196 |
| <i>Department Total</i> | | <i>532</i> | | <i>532</i> |
| Chemistry | Chemistry | 107 | | 107 |
| | Chemistry Education – Grades 6-12 | 4 | | 4 |
| | Environmental & Chemical Sciences | | 18 | 18 |
| <i>Department Total</i> | | <i>111</i> | <i>18</i> | <i>129</i> |

Fall 2009 Enrollment by Department and Major (continued)

| <u>College/Department</u> | <u>Major</u> | <u>Undergraduate</u> | <u>Graduate</u> | <u>Total</u> |
|--|---|----------------------|------------------|---------------------|
| | | | | |
| Math, Computer Sci and Stat | Computer Information Tech | 25 | | 25 |
| | Computer Science | 93 | | 93 |
| | Mathematical Sciences | | 55 | 55 |
| | Mathematics | 26 | | 26 |
| | Mathematics Education – Grades 6-12 | 35 | | 35 |
| | Undeclared | 1 | | 1 |
| <i>Department Total</i> | | <i>180</i> | <i>55</i> | <i>235</i> |
| | | | | |
| Nutrition & Family Studies | Family & Consumer Sciences | 87 | | 87 |
| | Family & Consumer Sciences Education Grades 6-12 | 2 | | 2 |
| | Family & Consumer Sciences Online | 18 | | 18 |
| | General Studies | 3 | | 3 |
| <i>Department Total</i> | | <i>110</i> | | <i>110</i> |
| | | | | |
| Physics | Physics | 19 | | 19 |
| <i>Department Total</i> | | <i>19</i> | | <i>19</i> |
| | | | | |
| <i>College of Science Total</i> | | <i>1,257</i> | <i>98</i> | <i>1,355</i> |
| | | | | |
| University Total | | 7,535 | 1,110 | 8,645 |

| | | |
|---|-----|------|
| Undergraduates taking developmental classes | 666 | 8.8% |
|---|-----|------|

Historical Fall Enrollment Data Since 1939

| <u>Fall</u> | <u>Under-graduate</u> | <u>Graduate</u> | <u>Total</u> | | <u>Fall</u> | <u>Under-graduate</u> | <u>Graduate</u> | <u>Total</u> |
|-------------|-----------------------|-----------------|--------------|--|-------------|-----------------------|-----------------|--------------|
| 2009 | 7,535 | 1,110 | 8,645 | | 1973 | 4,922 | 915 | 5,837 |
| 2008 | 7,282 | 1,012 | 8,294 | | 1972 | 5,226 | 959 | 6,185 |
| 2007 | 7,053 | 1,042 | 8,095 | | 1971 | 5,067 | 958 | 6,025 |
| 2006 | 7,336 | 1,007 | 8,343 | | 1970 | 4,844 | 750 | 5,594 |
| 2005 | 7,847 | 1,145 | 8,992 | | 1969 | 4,568 | 582 | 5,150 |
| 2004 | 7,724 | 1,060 | 8,784 | | 1968 | 4,618 | 472 | 5,090 |
| 2003 | 7,330 | 1,117 | 8,447 | | 1967 | 4,234 | 308 | 4,542 |
| 2002 | 7,010 | 1,019 | 8,029 | | 1966 | 3,983 | 333 | 4,316 |
| 2001 | 6,845 | 935 | 7,780 | | 1965 | 3,512 | 295 | 3,807 |
| 2000 | 6,731 | 901 | 7,632 | | 1964 | 3,149 | 211 | 3,360 |
| 1999 | 6,865 | 1,014 | 7,879 | | 1963 | 2,663 | 164 | 2,827 |
| 1998 | 6,978 | 1,017 | 7,995 | | 1962 | 2,999 | 132 | 3,131 |
| 1997 | 7,050 | 1,087 | 8,137 | | 1961 | 2,848 | 98 | 2,946 |
| 1996 | 7,063 | 1,024 | 8,087 | | 1960 | 2,697 | | 2,697 |
| 1995 | 7,381 | 1,063 | 8,444 | | 1959 | 2,502 | | 2,502 |
| 1994 | 7,658 | 1,071 | 8,729 | | 1958 | 2,444 | | 2,444 |
| 1993 | 7,347 | 1,057 | 8,404 | | 1957 | 2,024 | | 2,024 |
| 1992 | 7,316 | 1,158 | 8,474 | | 1956 | 1,916 | | 1,916 |
| 1991 | 6,818 | 1,013 | 7,831 | | 1955 | 1,661 | | 1,661 |
| 1990 | 6,662 | 1,062 | 7,724 | | 1954 | 1,367 | | 1,367 |
| 1989 | 6,557 | 1,022 | 7,579 | | 1953 | 1,192 | | 1,192 |
| 1988 | 6,383 | 1,040 | 7,423 | | 1952 | 993 | | 993 |
| 1987 | 6,457 | 1,036 | 7,493 | | 1951 | 905 | | 905 |
| 1986 | 6,430 | 950 | 7,380 | | 1950 | 501 | | 501 |
| 1985 | 6,650 | 1,174 | 7,824 | | 1949 | 397 | | 397 |
| 1984 | 6,645 | 1,336 | 7,981 | | 1948 | 575 | | 575 |
| 1983 | 6,491 | 1,535 | 8,026 | | 1947 | 615 | | 615 |
| 1982 | 5,888 | 1,463 | 7,351 | | 1946 | 640 | | 640 |
| 1981 | 5,461 | 1,556 | 7,017 | | 1945 | 233 | | 233 |
| 1980 | 4,700 | 691 | 5,391 | | 1944 | 131 | | 131 |
| 1979 | 4,435 | 721 | 5,156 | | 1943 | 146 | | 146 |
| 1978 | 4,626 | 750 | 5,376 | | 1942 | 169 | | 169 |
| 1977 | 4,883 | 642 | 5,525 | | 1941 | 223 | | 223 |
| 1976 | 5,048 | 758 | 5,806 | | 1940 | 242 | | 242 |
| 1975 | 5,058 | 955 | 6,013 | | 1939 | 254 | | 254 |
| 1974 | 4,841 | 845 | 5,686 | | | | | |

This Page is Intentionally Left Blank

First-Time Freshmen

Fall 2009 First-Time Freshmen by Full-Time/Part-Time Status

| | <u>Total</u> | <u>Percent</u> |
|--------------|--------------|----------------|
| Full-Time | 1,225 | 93.0% |
| Part-Time | 92 | 7.0% |
| Total | 1,317 | 100.0% |

Fall 2009 First-Time Freshmen by Gender

| | <u>Full-Time</u> | <u>Part-Time</u> | <u>Total</u> | <u>Percent</u> |
|--------------|------------------|------------------|--------------|----------------|
| Female | 728 | 56 | 784 | 59.5% |
| Male | 497 | 36 | 533 | 40.5% |
| Total | 1,225 | 92 | 1,317 | 100.0% |

Fall 2009 First-Time Freshmen by Ethnicity

| | <u>Full-Time</u> | <u>Part-Time</u> | <u>Total</u> | <u>Percent</u> |
|---------------------------|------------------|------------------|--------------|----------------|
| Amer Indian/Alaska Native | 11 | 1 | 12 | .9% |
| Asian/Pacific Islander | 11 | 3 | 14 | 1.1% |
| Black | 218 | 32 | 250 | 19.0% |
| Foreign | 31 | | 31 | 2.3% |
| Hispanic | 19 | 1 | 20 | 1.5% |
| White | 929 | 53 | 982 | 74.6% |
| Race/Ethnicity Unknown | 6 | 2 | 8 | .6% |
| Total | 1,225 | 92 | 1,317 | 100.0% |

Fall 2009 First-Time Freshmen Admissions

| | <u>Total</u> |
|--------------------|--------------|
| Applied | 2,904 |
| Accepted | 1,946 |
| Enrolled Full-Time | 1,225 |
| Enrolled Part-Time | 92 |

ACT Class Profile First-Time Full-Time Degree Seeking Freshman

| | <u>Avg ACT</u> |
|-----------|----------------|
| Fall 2009 | 21.3 |
| Fall 2008 | 20.6 |

Fall 2009 First-Time Freshmen by Parish of Origin

| Parish | Enrollment | Parish | Enrollment |
|------------------|------------|--------------------|------------|
| Acadia | 30 | | |
| Allen | 54 | Total Louisiana | 1,185 |
| Ascension | 6 | % of Total FTF | 90.0% |
| Assumption | 2 | Number of Parishes | 43 |
| Avoyelles | 1 | | |
| Beauregard | 89 | | |
| Bossier | 3 | Five Parish Total | 951 |
| Caddo | 6 | % of Total FTF | 72.2% |
| Calcasieu | 674 | | |
| Cameron | 42 | | |
| DeSoto | 1 | | |
| East Baton Rouge | 12 | | |
| Evangeline | 11 | | |
| Grant | 3 | | |
| Iberia | 14 | | |
| Iberville | 2 | | |
| Jefferson | 5 | | |
| Jefferson Davis | 92 | | |
| Lafayette | 23 | | |
| Lafourche | 1 | | |
| Livingston | 4 | | |
| Morehouse | 2 | | |
| Natchitoches | 2 | | |
| Orleans | 3 | | |
| Ouachita | 3 | | |
| Pointe Coupee | 1 | | |
| Rapides | 11 | | |
| Sabine | 3 | | |
| St Bernard | 1 | | |
| St Charles | 3 | | |
| St James | 1 | | |
| St John | 1 | | |
| St Landry | 13 | | |
| St Martin | 5 | | |
| St Mary | 4 | | |
| St Tammany | 2 | | |
| Tangipahoa | 1 | | |
| Vermilion | 15 | | |
| Vernon | 32 | | |
| Washington | 3 | | |
| Webster | 1 | | |
| West Carroll | 1 | | |
| West Feliciana | 2 | | |

Fall 2009 First-Time Freshmen by State of Origin

| State | Enrollment |
|--|------------|
| Arizona | 1 |
| Arkansas | 1 |
| California | 2 |
| Georgia | 1 |
| Iowa | 1 |
| Louisiana | 1,186 |
| Mississippi | 2 |
| Nevada | 1 |
| New Mexico | 1 |
| New York | 1 |
| South Carolina | 1 |
| Texas | 84 |
| Washington | 1 |
| Wisconsin | 1 |
| Total | 1,284 |
| | |
| Total Out of State | 98 |
| % of Total FTF | 7.4% |
| Number of States (Other than Louisiana) | 13 |
| | |
| | |

Fall 2009 First-Time Freshmen by Foreign Country of Origin

| <u>Country</u> | <u>Enrollment</u> |
|---|-------------------|
| Bolivia | 1 |
| Canada | 1 |
| China | 5 |
| Colombia | 1 |
| Indonesia | 1 |
| Ireland | 1 |
| Nepal | 7 |
| Nigeria | 2 |
| Pakistan | 1 |
| Thailand | 3 |
| Ukraine | 1 |
| United Kingdom | 1 |
| Vietnam | 9 |
| | |
| Total Foreign | 34 |
| % of Total FTF | 2.6% |
| Number of Countries (Other than USA) | 13 |
| | |
| | |

Fall 2009 First-Time Freshmen by Residency

| | <u>Full-Time</u> | <u>Part-Time</u> | <u>Total</u> | <u>Percent</u> |
|--------------|------------------|------------------|--------------|----------------|
| Louisiana | 1,100 | 85 | 1,185 | 90.0% |
| Out of state | 92 | 6 | 98 | 7.4% |
| Foreign | 33 | 1 | 34 | 2.6% |
| Total | 1,225 | 92 | 1,317 | 100.0% |

Fall 2009 First-Time Freshmen Enrollment by College

| | Full-Time | Part-Time | Total | Percent |
|--------------------------------------|------------------|------------------|--------------|----------------|
| Business | 99 | 5 | 104 | 7.9% |
| Education | 190 | 5 | 195 | 14.8% |
| Engineering & Engineering Technology | 113 | 1 | 114 | 8.7% |
| General & Basic Studies | 158 | 59 | 217 | 16.5% |
| Liberal Arts | 162 | 11 | 173 | 13.1% |
| Nursing | 204 | 6 | 210 | 15.9% |
| Science | 299 | 5 | 304 | 23.1% |
| Total | 1,225 | 92 | 1,317 | 100.0% |

Historical Fall First-Time Freshmen Enrollment by College

| | 2005 | 2006 | 2007 | 2008 | 2009 |
|--------------------------------------|--------------|--------------|--------------|--------------|--------------|
| Business | 108 | 134 | 125 | 150 | 104 |
| Continuing Education | | 3 | 3 | | |
| Education | 172 | 164 | 167 | 192 | 195 |
| Engineering & Engineering Technology | 111 | 105 | 125 | 116 | 114 |
| General & Basic Studies | 337 | 272 | 251 | 187 | 217 |
| Liberal Arts | 147 | 153 | 139 | 181 | 173 |
| Nursing | 213 | 212 | 212 | 197 | 210 |
| Science | 281 | 276 | 279 | 319 | 304 |
| Total | 1,369 | 1,319 | 1,301 | 1,342 | 1,317 |

Fall 2009 First-Time Freshmen by College and Department

| <u>College</u> | <u>Department</u> | <u>Full-Time</u> | <u>Part-Time</u> | <u>Total</u> |
|---|------------------------------|------------------|------------------|--------------|
| Business | Accounting, Fin & Economics | 27 | 1 | 28 |
| | Mgmt, Marketing, & Gen Bus | 72 | 4 | 76 |
| <i>College of Business Total</i> | | 99 | 5 | 104 |
| Education | Educ Leadership & Instr Tech | 2 | | 2 |
| | Health & Human Performance | 70 | 2 | 72 |
| | Psychology | 54 | | 54 |
| | Teacher Education | 64 | 3 | 67 |
| <i>College of Education Total</i> | | 190 | 5 | 195 |
| Engineering & Engineering Technology | Engineering | 99 | 1 | 100 |
| | Engineering Technology | 14 | | 14 |
| <i>College of Engineering & Engineering Technology Total</i> | | 113 | 1 | 114 |
| General & Basic Studies | Basic Studies | 158 | 59 | 217 |
| <i>General & Basic Studies Total</i> | | 158 | 59 | 217 |
| Liberal Arts | English & Foreign Languages | 24 | 2 | 26 |
| | History | 15 | 2 | 17 |
| | Mass Communication | 21 | | 21 |
| | Performing Arts | 35 | | 35 |
| | Social Sciences | 45 | 6 | 51 |
| | Visual Arts | 22 | 1 | 23 |
| <i>College of Liberal Arts Total</i> | | 162 | 11 | 173 |
| Nursing | Undergraduate Nursing | 204 | 6 | 210 |
| <i>College of Nursing Total</i> | | 204 | 6 | 210 |
| Science | Agriculture | 78 | | 78 |
| | Biology & Health Sciences | 145 | 2 | 147 |
| | Chemistry | 34 | | 34 |
| | Math, Computer Sci and Stat | 26 | 1 | 27 |
| | Nutrition & Family Studies | 10 | 2 | 12 |
| | Physics | 6 | | 6 |
| <i>College of Science Total</i> | | 299 | 5 | 304 |
| University Total | | 1,225 | 92 | 1,317 |

Historical First-Time Freshmen Enrollment by College and Department

| College | Department Name | 2005 | 2006 | 2007 | 2008 | 2009 |
|--|---------------------------------|--------------|--------------|--------------|--------------|--------------|
| Business | Accounting, Fin, & Economics | 32 | 39 | 46 | 42 | 28 |
| | Mgmt, Marketing and Gen Bus | 76 | 95 | 79 | 108 | 76 |
| College of Business Total | | 108 | 134 | 125 | 150 | 104 |
| | | | | | | |
| Continuing Education | Continuing Education | | 3 | 3 | | |
| Continuing Education Total | | | 3 | 3 | | |
| | | | | | | |
| Education | Educ Leadership & Instr Tech | 1 | 1 | 1 | 3 | 2 |
| | Health & Human Performance | 59 | 51 | 64 | 86 | 72 |
| | Psychology | 39 | 52 | 48 | 41 | 54 |
| | Teacher Education | 73 | 60 | 54 | 62 | 67 |
| College of Education Total | | 172 | 164 | 167 | 192 | 195 |
| | | | | | | |
| Engineering & Engineering Technology | Engineering | 92 | 85 | 100 | 92 | 100 |
| | Engineering Technology | 19 | 20 | 25 | 24 | 14 |
| College of Engineering & Engineering Technology Total | | 111 | 105 | 125 | 116 | 114 |
| | | | | | | |
| General & Basic Studies | Basic Studies | 337 | 272 | 251 | 187 | 217 |
| General & Basic Studies Total | | 337 | 272 | 251 | 187 | 217 |
| | | | | | | |
| Liberal Arts | English & Foreign Languages | 22 | 18 | 22 | 23 | 26 |
| | History | 13 | 16 | 13 | 11 | 17 |
| | Mass Communication | 26 | 28 | 17 | 35 | 21 |
| | Performing Arts | 21 | 26 | 22 | 38 | 35 |
| | Social Sciences | 47 | 42 | 37 | 54 | 51 |
| | Visual Arts | 18 | 23 | 28 | 20 | 23 |
| College of Liberal Arts Total | | 147 | 153 | 139 | 181 | 173 |
| | | | | | | |
| Nursing | Undergraduate Nursing | 213 | 212 | 212 | 197 | 210 |
| College of Nursing Total | | 213 | 212 | 212 | 197 | 210 |
| | | | | | | |
| Science | Agriculture* | 42 | 36 | 42 | 69 | 78 |
| | Biological & Envr Sciences* | 150 | 168 | 162 | 159 | |
| | Biology & Health Sciences* | | | | | 147 |
| | Chemistry | 29 | 16 | 28 | 39 | 34 |
| | Math, Computer Science, & Stat | 38 | 36 | 43 | 35 | 27 |
| | Nutrition & Family Studies | 20 | 15 | 4 | 13 | 12 |
| | Physics | 2 | 5 | | 4 | 6 |
| | College of Science Total | | 281 | 276 | 279 | 319 |
| | | | | | | |
| University Total | | 1,369 | 1,319 | 1,301 | 1,342 | 1,317 |

*In Spring 2009 Environmental Science was moved from Biological & Environmental Sciences to Agriculture.

Fall 2009 First-Time Freshmen by Department and Major

| <u>College/Department</u> | <u>Major</u> | <u>Full-Time</u> | <u>Part-Time</u> | <u>Total</u> |
|--|--|------------------|------------------|--------------|
| Business | | | | |
| Accounting, Fin & Economics | Accounting | 21 | 1 | 22 |
| | Finance | 6 | | 6 |
| <i>Department Total</i> | | <i>27</i> | <i>1</i> | <i>28</i> |
| Mgmt, Marketing, & Gen Bus | Gen Business Administration | 34 | 2 | 36 |
| | Management | 20 | 2 | 22 |
| | Marketing | 18 | | 18 |
| <i>Department Total</i> | | <i>72</i> | <i>4</i> | <i>76</i> |
| College of Business Total | | 99 | 5 | 104 |
| Education | | | | |
| Educ Leadership & Instr Tech | Business Education – Grades 6-12 | 2 | | 2 |
| <i>Department Total</i> | | <i>2</i> | | <i>2</i> |
| Health & Human Performance | Athletic Training | 9 | | 9 |
| | Health & Human Performance, General | 45 | 1 | 46 |
| | Health & Physical Education, Grades K–12 | 16 | 1 | 17 |
| <i>Department Total</i> | | <i>70</i> | <i>2</i> | <i>72</i> |
| Psychology | Psychology | 54 | | 54 |
| <i>Department Total</i> | | <i>54</i> | | <i>54</i> |
| Teacher Education | Early Childhood Education–Grades PK–3 | 29 | 2 | 31 |
| | Elementary Education – Grades 1–5 | 32 | 1 | 33 |
| | Special Education, General | 3 | | 3 |
| <i>Department Total</i> | | <i>64</i> | <i>3</i> | <i>67</i> |
| College of Education Total | | 190 | 5 | 195 |
| Engineering & Engineering Technology | | | | |
| Engineering | Engineering | 99 | 1 | 100 |
| <i>Department Total</i> | | <i>99</i> | <i>1</i> | <i>100</i> |
| Engineering Technology | Engineering Technology | 14 | | 14 |
| <i>Department Total</i> | | <i>14</i> | | <i>14</i> |
| College of Engineering & Engineering Technology Total | | 113 | 1 | 114 |

Fall 2009 First-Time Freshmen by Department and Major (continued)

| <u>College/Department</u> | <u>Major</u> | <u>Full-Time</u> | <u>Part-Time</u> | <u>Total</u> |
|--|--|------------------|------------------|--------------|
| General & Basic Studies | | | | |
| Basic Studies | Basic Studies | 146 | 57 | 203 |
| | General Studies | 12 | 2 | 14 |
| <i>Department Total</i> | | <i>158</i> | <i>59</i> | <i>217</i> |
| | | | | |
| General & Basic Studies Total | | 158 | 59 | 217 |
| | | | | |
| Liberal Arts | | | | |
| English & Foreign Languages | English | 9 | | 9 |
| | English Education Grades 6 – 12 | 12 | 1 | 13 |
| | Foreign Language Ed Grds 6-12 | 2 | 1 | 3 |
| | Spanish | 1 | | 1 |
| <i>Department Total</i> | | <i>24</i> | <i>2</i> | <i>26</i> |
| | | | | |
| History | History | 6 | 1 | 7 |
| | Liberal Studies | 2 | | 2 |
| | Social Studies Education Grades 6 – 12 | 7 | 1 | 8 |
| <i>Department Total</i> | | <i>15</i> | <i>2</i> | <i>17</i> |
| | | | | |
| Mass Communication | Mass Communication | 20 | | 20 |
| | Speech Education Grades 6-12 | 1 | | 1 |
| <i>Department Total</i> | | <i>21</i> | | <i>21</i> |
| | | | | |
| Performing Arts | Music Educ–Instrumental Grades K–12 | 25 | | 25 |
| | Music Education – Vocal Grades 6 – 12 | 5 | | 5 |
| | Music Performance | 4 | | 4 |
| | Theatre Arts | 1 | | 1 |
| <i>Department Total</i> | | <i>35</i> | | <i>35</i> |
| | | | | |
| Social Sciences | Criminal Justice | 30 | 2 | 32 |
| | General Studies | 1 | | 1 |
| | Government | 7 | | 7 |
| | Paralegal Studies | 1 | 2 | 3 |
| | Sociology | 6 | 2 | 8 |
| <i>Department Total</i> | | <i>45</i> | <i>6</i> | <i>51</i> |
| | | | | |
| Visual Arts | Art | 18 | 1 | 19 |
| | Art Education – Grades K – 12 | 4 | | 4 |
| <i>Department Total</i> | | <i>22</i> | <i>1</i> | <i>23</i> |
| | | | | |
| College of Liberal Arts Total | | 162 | 11 | 173 |

Fall 2009 First-Time Freshmen by Department and Major (continued)

| <u>College/Department</u> | <u>Major</u> | <u>Full-Time</u> | <u>Part-Time</u> | <u>Total</u> |
|---------------------------------|---------------------------------------|------------------|------------------|--------------|
| | | | | |
| Nursing | | | | |
| Undergraduate Nursing | Nursing | 204 | 6 | 210 |
| <i>Department Total</i> | | 204 | 6 | 210 |
| | | | | |
| College of Nursing Total | | 204 | 6 | 210 |
| | | | | |
| Science | | | | |
| Agriculture | Agricultural Education, Grades 6 – 12 | 6 | | 6 |
| | Agricultural Sciences | 72 | | 72 |
| <i>Department Total</i> | | 78 | | 78 |
| | | | | |
| Biology & Health Sciences | Biological Science | 87 | 1 | 88 |
| | Biology Education – Grades 6 – 12 | 2 | | 2 |
| | Clinical Laboratory Science | 4 | | 4 |
| | Radiologic Technology | 52 | 1 | 53 |
| <i>Department Total</i> | | 145 | 2 | 147 |
| | | | | |
| Chemistry | Chemistry | 32 | | 32 |
| | Chemistry Education, Grades 6 – 12 | 2 | | 2 |
| <i>Department Total</i> | | 34 | | 34 |
| | | | | |
| Math, Computer Sci and Stat | Computer Information Tech | 1 | 1 | 2 |
| | Computer Science | 18 | | 18 |
| | Mathematics | 2 | | 2 |
| | Mathematics Education – Grades 6-12 | 5 | | 5 |
| <i>Department Total</i> | | 26 | 1 | 27 |
| | | | | |
| Nutrition & Family Studies | Family & Consumer Sciences | 9 | 1 | 10 |
| | Family & Consumer Sciences Online | 1 | 1 | 2 |
| <i>Department Total</i> | | 10 | 2 | 12 |
| | | | | |
| Physics | Physics | 6 | | 6 |
| <i>Department Total</i> | | 6 | | 6 |
| | | | | |
| College of Science Total | | 299 | 5 | 304 |
| | | | | |
| University Total | | 1,225 | 92 | 1,317 |

Transfers

Fall 2009 Transfer Enrollment by Full-Time/Part-Time Status

| | <u>Undergraduate</u> | <u>Graduate</u> | <u>Total</u> | <u>Percent</u> |
|--------------|----------------------|-----------------|--------------|----------------|
| Full-Time | 344 | 18 | 362 | 78.0% |
| Part-Time | 78 | 24 | 102 | 22.0% |
| Total | 422 | 42 | 464 | 100.0% |

Fall 2009 Undergraduate Transfer Enrollment by College

| | <u>Full-Time</u> | <u>Part-Time</u> | <u>Total</u> | <u>Percent</u> |
|--------------------------------------|------------------|------------------|--------------|----------------|
| Business | 36 | 7 | 43 | 10.2% |
| Education | 54 | 11 | 65 | 15.4% |
| Engineering & Engineering Technology | 32 | 7 | 39 | 9.3% |
| General & Basic Studies | 43 | 9 | 52 | 12.3% |
| Liberal Arts | 63 | 10 | 73 | 17.3% |
| Nursing | 73 | 22 | 95 | 22.5% |
| Science | 43 | 12 | 55 | 13.0% |
| Total | 344 | 78 | 422 | 100.0% |

Historical Fall Undergraduate Transfer Enrollment by College

| | <u>2005</u> | <u>2006</u> | <u>2007</u> | <u>2008</u> | <u>2009</u> |
|--------------------------------------|-------------|-------------|-------------|-------------|-------------|
| Business | 50 | 45 | 56 | 48 | 43 |
| Education | 57 | 51 | 42 | 56 | 65 |
| Engineering & Engineering Technology | 18 | 27 | 20 | 28 | 39 |
| General & Basic Studies | 37 | 32 | 23 | 39 | 52 |
| Liberal Arts | 47 | 40 | 36 | 40 | 73 |
| Nursing | 74 | 64 | 72 | 78 | 95 |
| Science | 55 | 62 | 74 | 61 | 55 |
| Total | 338 | 321 | 323 | 350 | 422 |

Fall 2009 Undergraduate Transfers by College and Department

| <u>College</u> | <u>Department</u> | <u>Full-Time</u> | <u>Part-Time</u> | <u>Total</u> |
|---|------------------------------|------------------|------------------|--------------|
| Business | Accounting, Fin & Economics | 17 | 1 | 18 |
| | Mgmt, Marketing, & Gen Bus | 19 | 6 | 25 |
| <i>College of Business Total</i> | | 36 | 7 | 43 |
| Education | Educ Leadership & Instr Tech | | 1 | 1 |
| | Health & Human Performance | 16 | 2 | 18 |
| | Psychology | 14 | 1 | 15 |
| | Teacher Education | 24 | 7 | 31 |
| <i>College of Education Total</i> | | 54 | 11 | 65 |
| Engineering & Engineering Technology | Engineering | 28 | 5 | 33 |
| | Engineering Technology | 4 | 2 | 6 |
| <i>College of Engineering & Engineering Technology Total</i> | | 32 | 7 | 39 |
| General & Basic Studies | Basic Studies | 43 | 9 | 52 |
| <i>General & Basic Studies Total</i> | | 43 | 9 | 52 |
| Liberal Arts | English & Foreign Languages | 9 | | 9 |
| | History | 8 | 2 | 10 |
| | Mass Communication | 11 | 2 | 13 |
| | Performing Arts | 9 | 1 | 10 |
| | Social Sciences | 23 | 2 | 25 |
| | Visual Arts | 3 | 3 | 6 |
| <i>College of Liberal Arts Total</i> | | 63 | 10 | 73 |
| Nursing | Undergraduate Nursing | 73 | 22 | 95 |
| <i>College of Nursing Total</i> | | 73 | 22 | 95 |
| Science | Agriculture | 10 | 1 | 11 |
| | Biology & Health Sciences | 18 | 5 | 23 |
| | Chemistry | 2 | 1 | 3 |
| | Math, Computer Sci and Stat | 9 | 4 | 13 |
| | Nutrition & Family Studies | 4 | 1 | 5 |
| <i>College of Science Total</i> | | 43 | 12 | 55 |
| University Total | | 344 | 78 | 422 |

Fall 2009 Undergraduate Transfers by Department and Major

| <u>College/Department</u> | <u>Major</u> | <u>Full-Time</u> | <u>Part-Time</u> | <u>Total</u> |
|--|--|------------------|------------------|--------------|
| Business | | | | |
| Accounting, Fin & Economics | Accounting | 10 | | 10 |
| | Finance | 7 | 1 | 8 |
| <i>Department Total</i> | | <i>17</i> | <i>1</i> | <i>18</i> |
| | | | | |
| Mgmt, Marketing, & Gen Bus | Gen Business Administration | 6 | 4 | 10 |
| | Management | 9 | 1 | 10 |
| | Marketing | 4 | 1 | 5 |
| <i>Department Total</i> | | <i>19</i> | <i>6</i> | <i>25</i> |
| | | | | |
| College of Business Total | | 36 | 7 | 43 |
| | | | | |
| Education | | | | |
| | | | | |
| Educ Leadership & Instr Tech | Business Education – Grades 6-12 | | 1 | 1 |
| <i>Department Total</i> | | | <i>1</i> | <i>1</i> |
| | | | | |
| Health & Human Performance | Athletic Training | 1 | | 1 |
| | Health & Human Performance, General | 11 | | 11 |
| | Health & Physical Education, Grades K–12 | 4 | 2 | 6 |
| <i>Department Total</i> | | <i>16</i> | <i>2</i> | <i>18</i> |
| | | | | |
| Psychology | Psychology | 14 | 1 | 15 |
| <i>Department Total</i> | | <i>14</i> | <i>1</i> | <i>15</i> |
| | | | | |
| Teacher Education | Early Childhood Education–Grades PK–3 | 9 | 3 | 12 |
| | Elementary Education – Grades 1–5 | 13 | 3 | 16 |
| | Special Education, General | 2 | 1 | 3 |
| <i>Department Total</i> | | <i>24</i> | <i>7</i> | <i>31</i> |
| | | | | |
| College of Education Total | | 54 | 11 | 65 |
| | | | | |
| Engineering & Engineering Technology | | | | |
| Engineering | Engineering | 28 | 5 | 33 |
| <i>Department Total</i> | | <i>28</i> | <i>5</i> | <i>33</i> |
| | | | | |
| Engineering Technology | Engineering Technology | 4 | 2 | 6 |
| <i>Department Total</i> | | <i>4</i> | <i>2</i> | <i>6</i> |
| | | | | |
| College of Engineering & Engineering Technology Total | | 32 | 7 | 39 |
| | | | | |

Fall 2009 Undergraduate Transfers by Department and Major (continued)

| <u>College/Department</u> | <u>Major</u> | <u>Full-Time</u> | <u>Part-Time</u> | <u>Total</u> |
|--|--|------------------|------------------|--------------|
| General & Basic Studies | | | | |
| Basic Studies | Basic Studies | 1 | 3 | 4 |
| | General Studies | 42 | 6 | 48 |
| <i>Department Total</i> | | <i>43</i> | <i>9</i> | <i>52</i> |
| | | | | |
| General & Basic Studies Total | | 43 | 9 | 52 |
| | | | | |
| Liberal Arts | | | | |
| English & Foreign Languages | English | 9 | | 9 |
| <i>Department Total</i> | | <i>9</i> | | <i>9</i> |
| | | | | |
| History | History | 6 | 1 | 7 |
| | Liberal Studies | 1 | | 1 |
| | Social Studies Education Grades 6 – 12 | 1 | 1 | 2 |
| <i>Department Total</i> | | <i>8</i> | <i>2</i> | <i>10</i> |
| | | | | |
| Mass Communication | Mass Communication | 11 | 2 | 13 |
| <i>Department Total</i> | | <i>11</i> | <i>2</i> | <i>13</i> |
| | | | | |
| Performing Arts | Music Educ–Instrumental Grades K–12 | 1 | | 1 |
| | Music Educ–Vocal Grades K–12 | 1 | | 1 |
| | Music Performance | 3 | | 3 |
| | Theatre Arts | 4 | 1 | 5 |
| <i>Department Total</i> | | <i>9</i> | <i>1</i> | <i>10</i> |
| | | | | |
| Social Sciences | Criminal Justice | 16 | 1 | 17 |
| | Government | 2 | 1 | 3 |
| | Paralegal Studies | 1 | | 1 |
| | Sociology | 4 | | 4 |
| <i>Department Total</i> | | <i>23</i> | <i>2</i> | <i>25</i> |
| | | | | |
| Visual Arts | Art | 3 | 3 | 6 |
| <i>Department Total</i> | | <i>3</i> | <i>3</i> | <i>6</i> |
| | | | | |
| College of Liberal Arts Total | | 63 | 10 | 73 |
| | | | | |
| Nursing | | | | |
| Undergraduate Nursing | Nursing | 73 | 22 | 95 |
| <i>Department Total</i> | | <i>73</i> | <i>22</i> | <i>95</i> |
| | | | | |
| College of Nursing Total | | 73 | 22 | 95 |

Fall 2009 Undergraduate Transfers by Department and Major (continued)

| <u>College/Department</u> | <u>Major</u> | <u>Full-Time</u> | <u>Part-Time</u> | <u>Total</u> |
|--|--|-------------------------|-------------------------|---------------------|
| | | | | |
| Science | | | | |
| Agriculture | Agricultural Sciences | 10 | 1 | 11 |
| <i>Department Total</i> | | <i>10</i> | <i>1</i> | <i>11</i> |
| | | | | |
| Biology & Health Sciences | Biological Science | 7 | 1 | 8 |
| | Clinical Laboratory Science | 1 | 1 | 2 |
| | Radiologic Technology | 10 | 3 | 13 |
| <i>Department Total</i> | | <i>18</i> | <i>5</i> | <i>23</i> |
| | | | | |
| Chemistry | Chemistry | 1 | 1 | 2 |
| | Chemistry Education – Grades 6-12 | 1 | | 1 |
| <i>Department Total</i> | | <i>2</i> | <i>1</i> | <i>3</i> |
| | | | | |
| Math, Computer Sci and Stat | Computer Information Technology | 1 | | 1 |
| | Computer Science | 4 | 3 | 7 |
| | Mathematics | 3 | 1 | 4 |
| | Mathematics Education – Grades 6-12 | 1 | | 1 |
| <i>Department Total</i> | | <i>9</i> | <i>4</i> | <i>13</i> |
| | | | | |
| Nutrition & Family Studies | Family & Consumer Sciences | 3 | | 3 |
| | Family & Consumer Sciences Education Grades 6-12 | 1 | | 1 |
| | Family & Consumer Sciences Online | | 1 | 1 |
| <i>Department Total</i> | | <i>4</i> | <i>1</i> | <i>5</i> |
| | | | | |
| <i>College of Science Total</i> | | <i>43</i> | <i>12</i> | <i>55</i> |
| | | | | |
| University Total | | 344 | 78 | 422 |

This Page is Intentionally Left Blank

Spring Enrollment Spring 2010

Spring 2010 Enrollment by Level

| | <u>Enrollment</u> | <u>Percent</u> |
|---------------|-------------------|----------------|
| Undergraduate | 6,978 | 86.2% |
| Graduate | 1,121 | 13.8% |
| Total | 8,099 | 100.0% |

Spring 2010 Full-Time Equivalent Enrollment by Level

| | <u>Enrollment</u> | <u>Percent</u> |
|--------------------------|-------------------|----------------|
| Undergraduate (12 hours) | 7,951.7 | 90.2% |
| Graduate (9 hours) | 861.1 | 9.8% |
| Total | 8,812.8 | 100.0% |

Spring 2010 Enrollment by Rank

| | <u>Enrollment</u> | <u>Percent</u> |
|-----------------------|-------------------|----------------|
| Early Admissions | 422 | 5.2% |
| Freshman | 1,968 | 24.3% |
| Sophomore | 1,312 | 16.2% |
| Junior | 1,285 | 15.9% |
| Senior | 1,974 | 24.4% |
| Masters Candidate | 824 | 10.2% |
| Education Specialist | 10 | .1% |
| Special Graduate | 286 | 3.5% |
| Non-Credit/Non-Degree | 18 | .2% |
| Total | 8,099 | 100.0% |

Spring 2010 Enrollment by Full-Time/Part-Time Status

| | <u>Undergraduate</u> | <u>Graduate</u> | <u>Total</u> | <u>Percent</u> |
|--------------|----------------------|-----------------|--------------|----------------|
| Full-Time | 5,592 | 403 | 5,995 | 74.0% |
| Part-Time | 1,386 | 718 | 2,104 | 26.0% |
| Total | 6,978 | 1,121 | 8,099 | 100.0% |

Spring 2010 Enrollment by Current Entry Status

| | <u>Undergraduate</u> | <u>Graduate</u> | <u>Total</u> | <u>Percent</u> |
|---------------------|----------------------|-----------------|--------------|----------------|
| Early Admissions | 422 | | 422 | 5.21% |
| Continuing | 5,871 | 875 | 6,746 | 83.29% |
| First-Time Freshmen | 147 | | 147 | 1.82% |
| New Graduate | | 171 | 171 | 2.11% |
| Other Undergraduate | 2 | | 2 | .03% |
| Re-Entry | 290 | 44 | 334 | 4.12% |
| Transfer | 242 | 31 | 273 | 3.37% |
| Visiting | 4 | | 4 | .05% |
| Total | 6,978 | 1,121 | 8,099 | 100.00% |

Spring 2010 Enrollment by Gender

| | <u>Undergraduate</u> | <u>Graduate</u> | <u>Total</u> | <u>Percent</u> |
|--------------|----------------------|-----------------|--------------|----------------|
| Female | 4,320 | 774 | 5,094 | 62.9% |
| Male | 2,658 | 347 | 3,005 | 37.1% |
| Total | 6,978 | 1,121 | 8,099 | 100.0% |

Spring 2010 Enrollment by Ethnicity

| | <u>Undergraduate</u> | <u>Graduate</u> | <u>Total</u> | <u>Percent</u> |
|---------------------------|----------------------|-----------------|--------------|----------------|
| Amer Indian/Alaska Native | 52 | 5 | 57 | .7% |
| Asian/Pacific Islander | 78 | 14 | 92 | 1.1% |
| Black | 1,297 | 160 | 1,457 | 18.0% |
| Foreign | 272 | 147 | 419 | 5.2% |
| Hispanic | 93 | 11 | 104 | 1.3% |
| White | 5,132 | 780 | 5,912 | 73.0% |
| Race/Ethnicity Unknown | 54 | 4 | 58 | .7% |
| Total | 6,978 | 1,121 | 8,099 | 100.0% |

Spring 2010 Enrollment by Gender and Ethnicity

| | <u>Female</u> | <u>Male</u> | <u>Total</u> | <u>Percent</u> |
|---------------------------|----------------------|---------------------|---------------------|-----------------------|
| Amer Indian/Alaska Native | 37 | 20 | 57 | .7% |
| Asian/Pacific Islander | 52 | 40 | 92 | 1.1% |
| Black | 991 | 466 | 1,457 | 18.0% |
| Foreign | 169 | 250 | 419 | 5.2% |
| Hispanic | 67 | 37 | 104 | 1.3% |
| White | 3,742 | 2,170 | 5,912 | 73.0% |
| Race/Ethnicity Unknown | 36 | 22 | 58 | .7% |
| <i>Total</i> | <i>5,094</i> | <i>3,005</i> | <i>8,099</i> | <i>100.0%</i> |

Spring 2010 Undergraduate Enrollment by Gender and Ethnicity

| | <u>Female</u> | <u>Male</u> | <u>Total</u> | <u>Percent</u> |
|---------------------------|----------------------|---------------------|---------------------|-----------------------|
| Amer Indian/Alaska Native | 32 | 20 | 52 | .7% |
| Asian/Pacific Islander | 41 | 37 | 78 | 1.1% |
| Black | 863 | 434 | 1,297 | 18.6% |
| Foreign | 119 | 153 | 272 | 3.9% |
| Hispanic | 59 | 34 | 93 | 1.3% |
| White | 3,172 | 1,960 | 5,132 | 73.6% |
| Race/Ethnicity Unknown | 34 | 20 | 54 | .8% |
| <i>Total</i> | <i>4,320</i> | <i>2,658</i> | <i>6,978</i> | <i>100.0%</i> |

Spring 2010 Graduate Enrollment by Gender and Ethnicity

| | <u>Female</u> | <u>Male</u> | <u>Total</u> | <u>Percent</u> |
|---------------------------|----------------------|--------------------|---------------------|-----------------------|
| Amer Indian/Alaska Native | 5 | | 5 | .4% |
| Asian/Pacific Islander | 11 | 3 | 14 | 1.2% |
| Black | 128 | 32 | 160 | 14.3% |
| Foreign | 50 | 97 | 147 | 13.1% |
| Hispanic | 8 | 3 | 11 | 1.0% |
| White | 570 | 210 | 780 | 69.6% |
| Race/Ethnicity Unknown | 2 | 2 | 4 | .4% |
| <i>Total</i> | <i>774</i> | <i>347</i> | <i>1,121</i> | <i>100.0%</i> |

Spring 2010 Undergraduate Enrollment by Rank and Ethnicity

| | <u>EA</u> | <u>FR</u> | <u>SO</u> | <u>JR</u> | <u>SR</u> | <u>ND</u> | <u>Total</u> |
|---------------------------|------------------|------------------|------------------|------------------|------------------|------------------|---------------------|
| Amer Indian/Alaska Native | 4 | 13 | 2 | 14 | 19 | | 52 |
| Asian/Pacific Islander | 8 | 17 | 15 | 16 | 22 | | 78 |
| Black | 53 | 429 | 243 | 223 | 349 | | 1,297 |
| Foreign | 1 | 80 | 53 | 60 | 78 | | 272 |
| Hispanic | 2 | 31 | 16 | 13 | 30 | 1 | 93 |
| White | 346 | 1,385 | 976 | 949 | 1,460 | 16 | 5,132 |
| Race/Ethnicity Unknown | 8 | 13 | 7 | 10 | 16 | | 54 |
| Total | 422 | 1,968 | 1,312 | 1,285 | 1,974 | 17 | 6,978 |

EA – Early Admissions

FR – Freshman

SO – Sophomore

JR – Junior

SR – Senior

ND – Non-Credit/Non-Degree

Spring 2010 Graduate Enrollment by Rank and Ethnicity

| | <u>MC</u> | <u>ES</u> | <u>SG</u> | <u>ND</u> | <u>Total</u> |
|---------------------------|------------------|------------------|------------------|------------------|---------------------|
| Amer Indian/Alaska Native | 2 | | 3 | | 5 |
| Asian/Pacific Islander | 12 | | 2 | | 14 |
| Black | 102 | 3 | 55 | | 160 |
| Foreign | 144 | | 3 | | 147 |
| Hispanic | 8 | | 3 | | 11 |
| White | 553 | 7 | 219 | 1 | 780 |
| Race/Ethnicity Unknown | 3 | | 1 | | 4 |
| Total | 824 | 10 | 286 | 1 | 1,121 |

MC – Masters Candidate

ES – Education Specialist

SG – Special Graduate

ND – Non-Credit/Non-Degree

Spring 2010 Enrollment by Age

| | <u>Undergraduate</u> | <u>Graduate</u> | <u>Total</u> | <u>Percent</u> |
|--------------|----------------------|-----------------|--------------|----------------|
| Under 18 | 270 | | 270 | 3.3% |
| 18 – 19 | 1,800 | | 1,800 | 22.2% |
| 20 – 21 | 1,814 | 6 | 1,820 | 22.5% |
| 22 – 24 | 1,437 | 268 | 1,705 | 21.1% |
| 25 – 29 | 782 | 306 | 1,088 | 13.4% |
| 30 – 34 | 363 | 196 | 559 | 6.9% |
| 35 – 39 | 230 | 110 | 340 | 4.2% |
| 40 – 49 | 202 | 147 | 349 | 4.3% |
| 50 – 64 | 75 | 80 | 155 | 1.9% |
| Over 64 | 5 | 8 | 13 | .2% |
| Total | 6,978 | 1,121 | 8,099 | 100.0% |

Spring 2010 Enrollment by Age Group

| | <u>Undergraduate</u> | <u>Graduate</u> | <u>Total</u> | <u>Percent</u> |
|--------------|----------------------|-----------------|--------------|----------------|
| Under 25 | 5,321 | 274 | 5,595 | 69.1% |
| 25 and Older | 1,657 | 847 | 2,504 | 30.9% |
| Total | 6,978 | 1,121 | 8,099 | 100.0% |

Spring 2010 Average Age

| | <u>Average Age</u> | <u>Median Age</u> |
|---------------------|--------------------|-------------------|
| All Students | 24.5 | 22 |
| First-Time Freshmen | 24.3 | 21 |
| Undergraduate | 23.2 | 21 |
| Graduate | 32.3 | 29 |

Spring 2010 Enrollment by Parish of Origin

| <u>Parish</u> | <u>Enrollment</u> | | <u>Parish</u> | <u>Enrollment</u> |
|------------------------|-------------------|--|------------------------------|-------------------|
| Acadia | 214 | | St Landry | 133 |
| Allen | 277 | | St Martin | 40 |
| Ascension | 15 | | St Mary | 29 |
| Assumption | 4 | | St Tammany | 30 |
| Avoyelles | 5 | | Tangipahoa | 14 |
| Beauregard | 494 | | Terrebonne | 21 |
| Bossier | 12 | | Vermilion | 112 |
| Caddo | 24 | | Vernon | 149 |
| Calcasieu | 4,169 | | Washington | 4 |
| Cameron | 219 | | Webster | 2 |
| Claiborne | 1 | | West Baton Rouge | 4 |
| Concordia | 3 | | West Carroll | 2 |
| DeSoto | 4 | | West Feliciana | 8 |
| East Baton Rouge | 47 | | | |
| East Carroll | 1 | | Total Louisiana | 7,168 |
| East Feliciana | 2 | | % of Total Enrollment | 88.5% |
| Evangeline | 115 | | Number of Parishes | 56 |
| Franklin | 2 | | | |
| Grant | 16 | | | |
| Iberia | 42 | | Five Parish Total | 5,691 |
| Iberville | 7 | | % of Total Enrollment | 70.3% |
| Jackson | 1 | | | |
| Jefferson | 25 | | | |
| Jefferson Davis | 532 | | | |
| Lafayette | 135 | | | |
| Lafourche | 8 | | | |
| LaSalle | 5 | | | |
| Lincoln | 3 | | | |
| Livingston | 17 | | | |
| Madison | 2 | | | |
| Morehouse | 4 | | | |
| Natchitoches | 13 | | | |
| Orleans | 35 | | | |
| Ouachita | 24 | | | |
| Plaquemines | 4 | | | |
| Pointe Coupee | 39 | | | |
| Rapides | 62 | | | |
| Richland | 1 | | | |
| Sabine | 14 | | | |
| St Bernard | 3 | | | |
| St Charles | 11 | | | |
| St James | 5 | | | |
| St John | 4 | | | |

Spring 2010 Enrollment by State of Origin

| State | Enrollment |
|---|------------|
| Alabama | 1 |
| Alaska | 1 |
| Arizona | 3 |
| Arkansas | 3 |
| California | 11 |
| Colorado | 2 |
| Connecticut | 1 |
| Florida | 10 |
| Georgia | 5 |
| Idaho | 1 |
| Illinois | 2 |
| Indiana | 4 |
| Iowa | 3 |
| Kansas | 2 |
| Louisiana | 7,168 |
| Maine | 1 |
| Maryland | 2 |
| Massachusetts | 1 |
| Michigan | 2 |
| Minnesota | 4 |
| Mississippi | 13 |
| Missouri | 2 |
| Nevada | 1 |
| New Jersey | 2 |
| New Mexico | 1 |
| New York | 2 |
| North Carolina | 4 |
| Ohio | 4 |
| Oklahoma | 10 |
| Oregon | 1 |
| Pennsylvania | 3 |
| Rhode Island | 2 |
| South Carolina | 2 |
| Tennessee | 3 |
| Texas | 352 |
| Virginia | 5 |
| Washington | 4 |
| Wisconsin | 3 |
| Total | 7,641 |
| | |
| Total Out of State | 473 |
| % Out of State of Total Enrollment | 5.8% |
| Number of States (Other than Louisiana) | 37 |
| | |

Spring 2010 Enrollment by Foreign Country of Origin

| <u>Country</u> | <u>Enrollment</u> | | <u>Country</u> | <u>Enrollment</u> |
|---------------------|-------------------|--|---|-------------------|
| Azerbaijan | 2 | | Turkey | 6 |
| Bangladesh | 1 | | Ukraine | 3 |
| Belgium | 1 | | United Kingdom | 6 |
| Benin | 1 | | Venezuela | 1 |
| Bolivia | 7 | | Vietnam | 62 |
| Brazil | 1 | | | |
| Bulgaria | 1 | | Total Foreign | 458 |
| Cambodia | 1 | | % of Total Enrollment | 5.7% |
| Cameroon | 1 | | Number of Countries (Other than USA) | 48 |
| Canada | 5 | | | |
| Chile | 1 | | | |
| China | 61 | | | |
| Colombia | 13 | | | |
| Croatia | 2 | | | |
| Ecuador | 8 | | | |
| Equatorial Guinea | 1 | | | |
| Germany | 1 | | | |
| Ghana | 1 | | | |
| Honduras | 3 | | | |
| India | 85 | | | |
| Indonesia | 17 | | | |
| Ireland | 5 | | | |
| Israel | 1 | | | |
| Jamaica | 3 | | | |
| Kenya | 3 | | | |
| Korea, Republic of | 14 | | | |
| Lithuania | 1 | | | |
| Macedonia | 1 | | | |
| Mexico | 7 | | | |
| Mongolia | 1 | | | |
| Nepal | 75 | | | |
| Nigeria | 12 | | | |
| Pakistan | 4 | | | |
| Peru | 4 | | | |
| Philippines | 2 | | | |
| Romania | 3 | | | |
| Russia | 2 | | | |
| Saudi Arabia | 1 | | | |
| Serbia | 2 | | | |
| South Africa | 2 | | | |
| Taiwan | 7 | | | |
| Thailand | 14 | | | |
| Trinidad and Tobago | 2 | | | |

Spring 2010 Undergraduate Enrollment by Residency

| | <u>Part-Time</u> | <u>Full-Time</u> | <u>Total</u> | <u>Percent</u> |
|---------------------|-------------------------|-------------------------|---------------------|-----------------------|
| Louisiana | 1,336 | 4,923 | 6,259 | 89.7% |
| Out of state | 34 | 387 | 421 | 6.0% |
| Foreign | 16 | 282 | 298 | 4.3% |
| <i>Total</i> | <i>1,386</i> | <i>5,592</i> | <i>6,978</i> | <i>100.0%</i> |

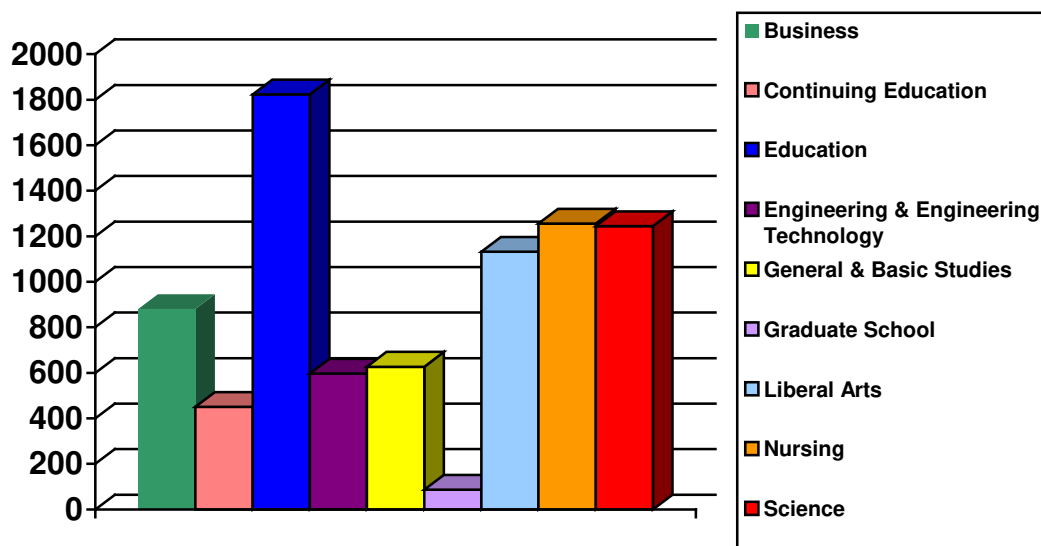
Spring 2010 Graduate Enrollment by Residency

| | <u>Part-Time</u> | <u>Full-Time</u> | <u>Total</u> | <u>Percent</u> |
|---------------------|-------------------------|-------------------------|---------------------|-----------------------|
| Louisiana | 669 | 240 | 909 | 81.1% |
| Out of state | 19 | 33 | 52 | 4.6% |
| Foreign | 30 | 130 | 160 | 14.3% |
| <i>Total</i> | <i>718</i> | <i>403</i> | <i>1,121</i> | <i>100.0%</i> |

This Page is Intentionally Left Blank

Spring 2010 Enrollment by College

| | <u>Undergraduate</u> | <u>Graduate</u> | <u>Total</u> | <u>Percent</u> |
|--------------------------------------|----------------------|-----------------|--------------|----------------|
| Business | 792 | 89 | 881 | 10.9% |
| Continuing Education | 435 | 16 | 451 | 5.5% |
| Education | 1,175 | 648 | 1,823 | 22.5% |
| Engineering & Engineering Technology | 534 | 63 | 597 | 7.4% |
| General & Basic Studies | 627 | | 627 | 7.7% |
| Graduate School | | 87 | 87 | 1.1% |
| Liberal Arts | 1,100 | 32 | 1,132 | 14.0% |
| Nursing | 1,169 | 87 | 1,256 | 15.5% |
| Science | 1,146 | 99 | 1,245 | 15.4% |
| Total | 6,978 | 1,121 | 8,099 | 100.0% |



Historical Spring Undergraduate Enrollment by College

| | <u>2006</u> | <u>2007</u> | <u>2008</u> | <u>2009</u> | <u>2010</u> |
|--------------------------------------|--------------|--------------|--------------|--------------|--------------|
| Business | 1,037 | 1,018 | 967 | 876 | 792 |
| Continuing Education* | 21 | 8 | 15 | 21 | 435 |
| Education | 1,229 | 1,160 | 1,094 | 1,089 | 1,175 |
| Engineering & Engineering Technology | 484 | 485 | 524 | 539 | 534 |
| General & Basic Studies* | 814 | 849 | 938 | 977 | 627 |
| Liberal Arts | 1,136 | 1,060 | 968 | 1,040 | 1,100 |
| Nursing | 1,036 | 1,008 | 1,081 | 1,034 | 1,169 |
| Science | 1,158 | 1,130 | 1,062 | 1,099 | 1,146 |
| Total | 6,915 | 6,718 | 6,649 | 6,675 | 6,978 |

* In Fall 2009, Early Admissions was moved from General & Basic Studies to Continuing Education.

Historical Spring Graduate Enrollment by College

| | <u>2006</u> | <u>2007</u> | <u>2008</u> | <u>2009</u> | <u>2010</u> |
|--------------------------------------|-------------|-------------|--------------|--------------|--------------|
| Business | 80 | 72 | 86 | 100 | 89 |
| Continuing Education | 19 | 17 | 14 | 15 | 16 |
| Education | 575 | 537 | 588 | 595 | 648 |
| Engineering & Engineering Technology | 75 | 101 | 69 | 57 | 63 |
| Graduate School | 82 | 64 | 61 | 61 | 87 |
| Liberal Arts | 40 | 32 | 32 | 39 | 32 |
| Nursing | 51 | 54 | 78 | 77 | 87 |
| Science | 71 | 94 | 104 | 77 | 99 |
| Total | 993 | 971 | 1,032 | 1,021 | 1,121 |

Spring 2010 Enrollment by College and Department

| <u>College</u> | <u>Department Name</u> | <u>Undergraduate</u> | <u>Graduate</u> | <u>Total</u> |
|---|--------------------------------|----------------------|-----------------|--------------|
| Business | Accounting, Fin, & Economics | 340 | | 340 |
| | Mgmt, Marketing and Gen Bus | 452 | 89 | 541 |
| <i>College of Business Total</i> | | 792 | 89 | 881 |
| | | | | |
| Continuing Education | Continuing Education | 435 | 16 | 451 |
| <i>Continuing Education Total</i> | | 435 | 16 | 451 |
| | | | | |
| Education | Educ Leadership & Instr Tech | 33 | 135 | 168 |
| | Health & Human Performance | 393 | 32 | 425 |
| | Psychology | 219 | 59 | 278 |
| | Teacher Education | 530 | 422 | 952 |
| <i>College of Education Total</i> | | 1,175 | 648 | 1,823 |
| | | | | |
| Engineering & Engineering Technology | Engineering | 402 | 63 | 465 |
| | Engineering Technology | 132 | | 132 |
| <i>College of Engineering & Engineering Technology Total</i> | | 534 | 63 | 597 |
| | | | | |
| General & Basic Studies | Basic Studies | 627 | | 627 |
| <i>General & Basic Studies Total</i> | | 627 | | 627 |
| | | | | |
| Graduate School | Graduate School | | 87 | 87 |
| <i>Graduate School Total</i> | | | 87 | 87 |
| | | | | |
| Liberal Arts | English & Foreign Languages | 146 | 30 | 176 |
| | History | 142 | | 142 |
| | Mass Communication | 156 | | 156 |
| | Performing Arts | 107 | 2 | 109 |
| | Social Sciences | 368 | | 368 |
| | Visual Arts | 181 | | 181 |
| <i>College of Liberal Arts Total</i> | | 1,100 | 32 | 1,132 |
| | | | | |
| Nursing | Graduate Nursing | | 87 | 87 |
| | Undergraduate Nursing | 1,169 | | 1,169 |
| <i>College of Nursing Total</i> | | 1,169 | 87 | 1,256 |
| | | | | |
| Science | Agriculture | 283 | 33 | 316 |
| | Biology & Health Sciences | 470 | | 470 |
| | Chemistry | 100 | 20 | 120 |
| | Math, Computer Science, & Stat | 169 | 46 | 215 |
| | Nutrition and Family Studies | 109 | | 109 |
| | Physics | 15 | | 15 |
| <i>College of Science Total</i> | | 1,146 | 99 | 1,245 |
| | | | | |
| University Total | | 6,978 | 1,121 | 8,099 |

Historical Spring Undergraduate Enrollment by College and Department

| College | Department Name | 2006 | 2007 | 2008 | 2009 | 2010 |
|--|--------------------------------|--------------|--------------|--------------|--------------|--------------|
| Business | Accounting, Fin, & Economics | 346 | 339 | 340 | 352 | 340 |
| | Mgmt, Marketing and Gen Bus | 691 | 679 | 627 | 524 | 452 |
| College of Business Total | | 1,037 | 1,018 | 967 | 876 | 792 |
| Continuing Education | Continuing Education | 21 | 8 | 15 | 21 | 435 |
| Continuing Education Total | | 21 | 8 | 15 | 21 | 435 |
| Education | Educ Leadership & Instr Tech | 22 | 21 | 17 | 22 | 33 |
| | Health & Human Performance | 378 | 360 | 363 | 384 | 393 |
| | Psychology | 228 | 239 | 228 | 205 | 219 |
| | Teacher Education | 601 | 540 | 486 | 478 | 530 |
| College of Education Total | | 1,229 | 1,160 | 1,094 | 1,089 | 1,175 |
| Engineering & Engineering Technology | Engineering | 336 | 319 | 349 | 380 | 402 |
| | Engineering Technology | 148 | 166 | 175 | 159 | 132 |
| College of Engineering & Engineering Technology Total | | 484 | 485 | 524 | 539 | 534 |
| General & Basic Studies | Basic Studies | 814 | 849 | 938 | 977 | 627 |
| Gen & Basic Studies Total | | 814 | 849 | 938 | 977 | 627 |
| Liberal Arts | English & Foreign Languages | 133 | 120 | 129 | 139 | 146 |
| | History | 130 | 129 | 127 | 139 | 142 |
| | Mass Communication | 199 | 173 | 141 | 158 | 156 |
| | Performing Arts | 112 | 102 | 81 | 105 | 107 |
| | Social Sciences | 395 | 369 | 313 | 322 | 368 |
| | Visual Arts | 167 | 167 | 177 | 177 | 181 |
| College of Liberal Arts Total | | 1,136 | 1,060 | 968 | 1,040 | 1,100 |
| Nursing | Undergraduate Nursing | 1,036 | 1,008 | 1,081 | 1,034 | 1,169 |
| College of Nursing Total | | 1,036 | 1,008 | 1,081 | 1,034 | 1,169 |
| Science | Agriculture* | 193 | 198 | 192 | 252 | 283 |
| | Biological & Envr Sciences* | 559 | 551 | 548 | 485 | |
| | Biology & Health Sciences* | | | | | 470 |
| | Chemistry | 93 | 95 | 72 | 95 | 100 |
| | Math, Computer Science, & Stat | 151 | 149 | 142 | 162 | 169 |
| | Nutrition and Family Studies | 151 | 127 | 100 | 94 | 109 |
| | Physics | 11 | 10 | 8 | 11 | 15 |
| College of Science Total | | 1,158 | 1,130 | 1,062 | 1,099 | 1,146 |
| University Total | | 6,915 | 6,718 | 6,649 | 6,675 | 6,978 |

*In Fall 2009 Environmental Science enrollment was moved from Biological & Environmental Sciences to Agriculture.

Historical Spring Graduate Enrollment by College and Department

| College | Department Name | 2006 | 2007 | 2008 | 2009 | 2010 |
|---|--------------------------------|-------------|-------------|--------------|--------------|--------------|
| Business | Mgmt, Marketing and Gen Bus | 80 | 72 | 86 | 100 | 89 |
| <i>College of Business Total</i> | | 80 | 72 | 86 | 100 | 89 |
| Continuing Education | Continuing Education | 19 | 17 | 14 | 15 | 16 |
| <i>Continuing Education Total</i> | | 19 | 17 | 14 | 15 | 16 |
| Education | Educ Leadership & Instr Tech | 168 | 116 | 126 | 122 | 135 |
| | Health & Human Performance | 26 | 20 | 22 | 41 | 32 |
| | Psychology | 59 | 61 | 63 | 64 | 59 |
| | Teacher Education | 322 | 340 | 377 | 368 | 422 |
| <i>College of Education Total</i> | | 575 | 537 | 588 | 595 | 648 |
| Engineering & Engineering Tech | Engineering | 75 | 101 | 69 | 57 | 63 |
| <i>College of Engineering & Engineering Technology Total</i> | | 75 | 101 | 69 | 57 | 63 |
| Graduate School | Graduate School | 82 | 64 | 61 | 61 | 87 |
| <i>Graduate School Total</i> | | 82 | 64 | 61 | 61 | 87 |
| Liberal Arts | English & Foreign Languages | 35 | 27 | 30 | 35 | 30 |
| | Performing Arts | 5 | 5 | 2 | 4 | 2 |
| <i>College of Liberal Arts Total</i> | | 40 | 32 | 32 | 39 | 32 |
| Nursing | Graduate Nursing | 51 | 54 | 78 | 77 | 87 |
| <i>College of Nursing Total</i> | | 51 | 54 | 78 | 77 | 87 |
| Science | Agriculture* | 4 | 6 | 11 | 25 | 33 |
| | Biological & Envr Sciences* | 12 | 8 | 10 | | |
| | Biology & Health Sciences* | | | | | |
| | Chemistry | 20 | 16 | 16 | 15 | 20 |
| | Math, Computer Science, & Stat | 27 | 56 | 59 | 37 | 46 |
| | Nutrition and Family Studies | 8 | 8 | 8 | | |
| <i>College of Science Total</i> | | 71 | 94 | 104 | 77 | 99 |
| University Total | | 993 | 971 | 1,032 | 1,021 | 1,121 |

*In Fall 2009 Environmental Science enrollment was moved from Biological & Environmental Sciences to Agriculture.

Spring 2010 Enrollment by Department and Major

| <u>College/Department</u> | <u>Major</u> | <u>Undergraduate</u> | <u>Graduate</u> | <u>Total</u> |
|-----------------------------------|--|----------------------|-----------------|--------------|
| Business | | | | |
| Accounting, Fin & Economics | Accounting | 247 | | 247 |
| | Finance | 93 | | 93 |
| <i>Department Total</i> | | 340 | | 340 |
| | | | | |
| Mgmt, Marketing, & Gen Bus | Business Administration | | 89 | 89 |
| | Gen Business Administration | 162 | | 162 |
| | Management | 181 | | 181 |
| | Marketing | 109 | | 109 |
| <i>Department Total</i> | | 452 | 89 | 541 |
| | | | | |
| College of Business Total | | 792 | 89 | 881 |
| | | | | |
| Continuing Education | | | | |
| Continuing Education | EASE Program | 13 | 16 | 29 |
| | Undeclared | 422 | | 422 |
| <i>Department Total</i> | | 435 | 16 | 451 |
| | | | | |
| Continuing Education Total | | 435 | 16 | 451 |
| | | | | |
| Education | | | | |
| Educ Leadership & Instr Tech | Business Education – Grades 6-12 | 33 | | 33 |
| | Educational Leadership | | 82 | 82 |
| | Educational Technology Leadership | | 25 | 25 |
| | Instructional Technology | | 28 | 28 |
| <i>Department Total</i> | | 33 | 135 | 168 |
| | | | | |
| Health & Human Performance | Athletic Training | 48 | | 48 |
| | Health & Human Performance | | 32 | 32 |
| | Health & Human Performance, Education | 6 | | 6 |
| | Health & Human Performance, General | 181 | | 181 |
| | Health & Physical Education, Gr K-12 | 157 | | 157 |
| | Undeclared | 1 | | 1 |
| <i>Department Total</i> | | 393 | 32 | 425 |
| | | | | |
| Psychology | Psychology | 219 | 59 | 278 |
| <i>Department Total</i> | | 219 | 59 | 278 |

Spring 2010 Enrollment by Department and Major (continued)

| <u>College/Department</u> | <u>Major</u> | <u>Undergraduate</u> | <u>Graduate</u> | <u>Total</u> |
|--|---|----------------------|-----------------|--------------|
| Teacher Education | Add-on Teacher Certification | | 13 | 13 |
| | Alt Certification – Grades 1-12 Mild/Moderate Sp Ed | | 27 | 27 |
| | Alt Certification – Grades K-12 Health & Physical Ed | | 12 | 12 |
| | Alt Certification – Grades 1-5 | | 54 | 54 |
| | Alt Certification – Grade 6-12 | | 46 | 46 |
| | Alt Certification – K-12 Art Ed | | 5 | 5 |
| | Alt Certification – Grades PK-3 | | 27 | 27 |
| | Curriculum and Instruction | | 13 | 13 |
| | Early Childhood Educ – Grades PK- 3 | 246 | | 246 |
| | Elementary Education – Grades 1–5 | 253 | 69 | 322 |
| | School Counseling | | 29 | 29 |
| | Secondary Education | 1 | | 1 |
| | Secondary Education Grades 6-12 | | 91 | 91 |
| | Special Education, Mild/Mod Gr 1-12 | | 29 | 29 |
| | Special Education | | 7 | 7 |
| | Special Education, General | 30 | | 30 |
| <i>Department Total</i> | | <i>530</i> | <i>422</i> | <i>952</i> |
| <i>College of Education Total</i> | | <i>1,175</i> | <i>648</i> | <i>1,823</i> |
| Engineering & Engineering Technology | | | | |
| Engineering | Engineering | 402 | 63 | 465 |
| <i>Department Total</i> | | <i>402</i> | <i>63</i> | <i>465</i> |
| Engineering Technology | Engineering Technology | 132 | | 132 |
| <i>Department Total</i> | | <i>132</i> | | <i>132</i> |
| <i>College of Engineering & Engineering Technology Total</i> | | <i>534</i> | <i>63</i> | <i>597</i> |
| General & Basic Studies | | | | |
| Basic Studies | Basic Studies | 143 | | 143 |
| | General Studies | 482 | | 482 |
| | Undeclared | 2 | | 2 |
| <i>Department Total</i> | | <i>627</i> | | <i>627</i> |
| <i>General & Basic Studies Total</i> | | <i>627</i> | | <i>627</i> |

Spring 2010 Enrollment by Department and Major (continued)

| <u>College/Department</u> | <u>Major</u> | <u>Undergraduate</u> | <u>Graduate</u> | <u>Total</u> |
|------------------------------|------------------------------------|----------------------|-----------------|--------------|
| Graduate School | | | | |
| Graduate School | Non-degree | | 87 | 87 |
| <i>Department Total</i> | | | 87 | 87 |
| Graduate School Total | | | 87 | 87 |
| Liberal Arts | | | | |
| English & Foreign Languages | Creative Writing | | 21 | 21 |
| | English | 63 | 9 | 72 |
| | English Education Grades 6 – 12 | 60 | | 60 |
| | Foreign Language Education Gr 6-12 | 12 | | 12 |
| | French | 1 | | 1 |
| | Spanish | 10 | | 10 |
| <i>Department Total</i> | | 146 | 30 | 176 |
| History | History | 58 | | 58 |
| | Liberal Studies | 27 | | 27 |
| | Social Studies Education Gr 6 – 12 | 57 | | 57 |
| <i>Department Total</i> | | 142 | | 142 |
| Mass Communication | Communication Studies | 3 | | 3 |
| | Mass Communication | 149 | | 149 |
| | Speech | 2 | | 2 |
| | Speech Education Grades 6-12 | 2 | | 2 |
| <i>Department Total</i> | | 156 | | 156 |
| Performing Arts | Music Education | 1 | 2 | 3 |
| | Music Educ–Instrumental, Gr K–12 | 50 | | 50 |
| | Music Education – Vocal, Gr 6 – 12 | 21 | | 21 |
| | Music Performance | 21 | | 21 |
| | Theatre Arts | 14 | | 14 |
| <i>Department Total</i> | | 107 | 2 | 109 |
| Social Sciences | Criminal Justice | 153 | | 153 |
| | Criminal Justice Online | 67 | | 67 |
| | General Studies | 4 | | 4 |
| | Government | 33 | | 33 |
| | Paralegal Studies | 34 | | 34 |
| | Sociology | 77 | | 77 |
| <i>Department Total</i> | | 368 | | 368 |

Spring 2010 Enrollment by Department and Major (continued)

| <u>College/Department</u> | <u>Major</u> | <u>Undergraduate</u> | <u>Graduate</u> | <u>Total</u> |
|--------------------------------------|--|----------------------|-----------------|--------------|
| Visual Arts | Art | 138 | | 138 |
| | Art Education | 4 | | 4 |
| | Art Education – Grades K – 12 | 38 | | 38 |
| | General Studies | 1 | | 1 |
| <i>Department Total</i> | | <i>181</i> | | <i>181</i> |
| College of Liberal Arts Total | | 1,100 | 32 | 1,132 |
| Nursing | | | | |
| Graduate Nursing | Nursing | | 87 | 87 |
| <i>Department Total</i> | | | <i>87</i> | <i>87</i> |
| Undergraduate Nursing | Nursing | 1,159 | | 1,159 |
| | Nursing Online | 10 | | 10 |
| <i>Department Total</i> | | <i>1,169</i> | | <i>1,169</i> |
| College of Nursing Total | | 1,169 | 87 | 1,256 |
| Science | | | | |
| Agriculture | Agricultural Education – Grs 6 – 12 | 20 | | 20 |
| | Agricultural Sciences | 190 | | 190 |
| | Environmental & Chemical Sciences | | 33 | 33 |
| | Environmental Science | 17 | | 17 |
| | Environmental Science Education Grades 6-12 | 2 | | 2 |
| | Natural Resource Conserv Mgmt | 19 | | 19 |
| | Wildlife Management | 35 | | 35 |
| <i>Department Total</i> | | <i>283</i> | <i>33</i> | <i>316</i> |
| Biology & Health Sciences | Biological Science | 217 | | 217 |
| | Biology Education – Grades 6 – 12 | 14 | | 14 |
| | Clinical Laboratory Science | 54 | | 54 |
| | Radiologic Sciences | 185 | | 185 |
| <i>Department Total</i> | | <i>470</i> | | <i>470</i> |
| Chemistry | Chemistry | 98 | | 98 |
| | Chemistry Education – Grades 6-12 | 2 | | 2 |
| | Environmental & Chemical Sciences | | 20 | 20 |
| <i>Department Total</i> | | <i>100</i> | <i>20</i> | <i>120</i> |

Spring 2010 Enrollment by Department and Major (continued)

| <u>College/Department</u> | <u>Major</u> | <u>Undergraduate</u> | <u>Graduate</u> | <u>Total</u> |
|--|---|----------------------|------------------|---------------------|
| | | | | |
| Math, Computer Sci and Stat | Computer Information Tech | 23 | | 23 |
| | Computer Science | 85 | | 85 |
| | Mathematical Sciences | | 46 | 46 |
| | Mathematics | 24 | | 24 |
| | Mathematics Education – Grades 6-12 | 36 | | 36 |
| | Undeclared | 1 | | 1 |
| <i>Department Total</i> | | <i>169</i> | <i>46</i> | <i>215</i> |
| | | | | |
| Nutrition & Family Studies | Family & Consumer Sciences | 84 | | 84 |
| | Family & Consumer Sciences Education Grades 6-12 | 1 | | 1 |
| | Family & Consumer Sciences Online | 21 | | 21 |
| | General Studies | 3 | | 3 |
| <i>Department Total</i> | | <i>109</i> | | <i>109</i> |
| | | | | |
| Physics | Physics | 15 | | 15 |
| <i>Department Total</i> | | <i>15</i> | | <i>15</i> |
| | | | | |
| <i>College of Science Total</i> | | <i>1,146</i> | <i>99</i> | <i>1,245</i> |
| | | | | |
| University Total | | 6,978 | 1,121 | 8,099 |

Historical Spring Enrollment Data Since 1940

| <u>Spring</u> | <u>Under-graduate</u> | <u>Graduate</u> | <u>Total</u> | | <u>Spring</u> | <u>Under-graduate</u> | <u>Graduate</u> | <u>Total</u> |
|---------------|-----------------------|-----------------|--------------|--|---------------|-----------------------|-----------------|--------------|
| 2010 | 6,978 | 1,121 | 8,099 | | 1974 | 4,544 | 932 | 5,476 |
| 2009 | 6,675 | 1,021 | 7,696 | | 1973 | 4,659 | 1,015 | 5,674 |
| 2008 | 6,649 | 1,032 | 7,681 | | 1972 | 4,659 | 943 | 5,602 |
| 2007 | 6,718 | 971 | 7,689 | | 1971 | 4,332 | 830 | 5,162 |
| 2006 | 6,915 | 993 | 7,908 | | 1970 | 4,016 | 616 | 4,632 |
| 2005 | 7,178 | 981 | 8,159 | | 1969 | 4,045 | 488 | 4,533 |
| 2004 | 6,877 | 1,003 | 7,880 | | 1968 | 3,990 | 376 | 4,366 |
| 2003 | 6,587 | 1,008 | 7,595 | | 1967 | 3,555 | 362 | 3,917 |
| 2002 | 6,332 | 995 | 7,327 | | 1966 | 3,009 | 300 | 3,309 |
| 2001 | 6,171 | 990 | 7,161 | | 1965 | 2,866 | 240 | 3,106 |
| 2000 | 6,319 | 1,115 | 7,434 | | 1964 | 2,416 | 172 | 2,588 |
| 1999 | 6,315 | 1,068 | 7,383 | | 1963 | 2,468 | 139 | 2,607 |
| 1998 | 6,172 | 1,111 | 7,283 | | 1962 | 2,617 | 87 | 2,704 |
| 1997 | 6,313 | 1,117 | 7,430 | | 1961 | 2,506 | | 2,506 |
| 1996 | 6,689 | 1,106 | 7,795 | | 1960 | 2,369 | | 2,369 |
| 1995 | 6,993 | 1,142 | 8,135 | | 1959 | 2,163 | | 2,163 |
| 1994 | 7,023 | 1,058 | 8,081 | | 1958 | 1,943 | | 1,943 |
| 1993 | 6,618 | 1,134 | 7,752 | | 1957 | 1,638 | | 1,638 |
| 1992 | 6,387 | 1,071 | 7,458 | | 1956 | 1,648 | | 1,648 |
| 1991 | 6,015 | 1,036 | 7,051 | | 1955 | 1,380 | | 1,380 |
| 1990 | 6,080 | 1,089 | 7,169 | | 1954 | 998 | | 998 |
| 1989 | 5,884 | 1,066 | 6,950 | | 1953 | 928 | | 928 |
| 1988 | 5,901 | 1,022 | 6,923 | | 1952 | 933 | | 933 |
| 1987 | 6,096 | 1,057 | 7,153 | | 1951 | 601 | | 601 |
| 1986 | 6,031 | 1,195 | 7,226 | | 1950 | 336 | | 336 |
| 1985 | 6,146 | 1,487 | 7633 | | 1949 | 501 | | 501 |
| 1984 | 6,049 | 1,343 | 7,392 | | 1948 | 529 | | 529 |
| 1983 | 5,704 | 1,399 | 7,103 | | 1947 | 560 | | 560 |
| 1982 | 5,206 | 1,521 | 6,727 | | 1946 | 268 | | 268 |
| 1981 | 4,837 | 723 | 5,560 | | 1945 | 116 | | 116 |
| 1980 | 4,203 | 709 | 4,912 | | 1944 | 107 | | 107 |
| 1979 | 4,198 | 650 | 4,848 | | 1943 | 173 | | 173 |
| 1978 | 4,396 | 721 | 5,117 | | 1942 | 181 | | 181 |
| 1977 | 4,720 | 688 | 5,408 | | 1941 | 215 | | 215 |
| 1976 | 4,817 | 903 | 5,720 | | 1940 | na | | na |
| 1975 | 4,585 | 942 | 5,527 | | | | | |

Retention and Graduation Rates

First-Time Full-Time Bachelor's Degree Seeking Freshman First to Second Year Retention Rate

| | <u>% Retained</u> |
|------------------------|-------------------|
| Fall 2008 to Fall 2009 | 67.2% |
| Fall 2007 to Fall 2008 | 68.4% |
| Fall 2006 to Fall 2007 | 65.5% |

IPEDS Graduation Rates

| | <u>2002 Cohort</u> |
|---------|--------------------|
| 4 Years | 14% |
| 5 Years | 29% |
| 6 Years | 37% |

Time to Degree

First-Time Full-Time Bachelor's Degree Seeking Freshman

| | |
|----------------------|-----------|
| 2008-2009 Completers | 5.7 years |
| 2007-2008 Completers | 5.7 years |

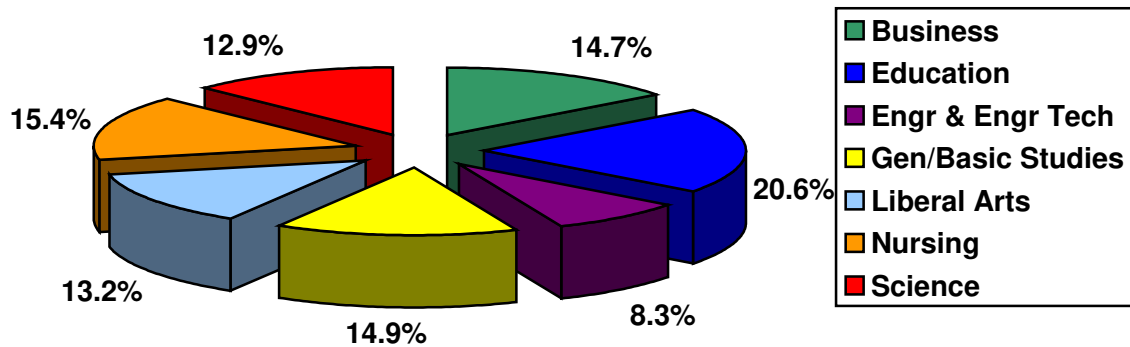
*Source Board of Regents TTDRPTBOR

**Degrees Conferred
July 1, 2008 – June 30, 2009**

Degrees Conferred by College and Level

| | <u>Associate</u> | <u>Bachelor's</u> | <u>Master's</u> | <u>Total</u> |
|--------------------------------------|------------------|-------------------|-----------------|--------------|
| Business | | 186 | 30 | 216 |
| Education | 1 | 155 | 146 | 302 |
| Engineering & Engineering Technology | 18 | 69 | 35 | 122 |
| General & Basic Studies | 32 | 186 | | 218 |
| Liberal Arts | 23 | 163 | 8 | 194 |
| Nursing | 40 | 158 | 29 | 227 |
| Science | 8 | 132 | 49 | 189 |
| Total | 122 | 1,049 | 297 | 1,468 |

Degrees Conferred by College



Historical Degrees Conferred by College

| | 04-05 | 05-06 | 06-07 | 07-08 | 08-09 |
|--------------------------------------|--------------|--------------|--------------|--------------|--------------|
| Business | 237 | 206 | 230 | 197 | 216 |
| Education | 299 | 328 | 295 | 263 | 302 |
| Engineering & Engineering Technology | 87 | 133 | 125 | 163 | 122 |
| General & Basic Studies | 223 | 219 | 250 | 264 | 218 |
| Liberal Arts | 256 | 226 | 221 | 223 | 194 |
| Nursing | 88 | 132 | 163 | 179 | 227 |
| Science | 167 | 168 | 169 | 177 | 189 |
| Total | 1,357 | 1,412 | 1,453 | 1,466 | 1,468 |

Historical Degrees Conferred by Level

| | 04-05 | 05-06 | 06-07 | 07-08 | 08-09 |
|----------------------|--------------|--------------|--------------|--------------|--------------|
| Associate | 124 | 120 | 138 | 148 | 122 |
| Bachelor | 991 | 1,041 | 1,043 | 1,055 | 1,049 |
| Master | 235 | 248 | 268 | 262 | 297 |
| Education Specialist | 7 | 3 | 4 | 1 | |
| Total | 1,357 | 1,412 | 1,453 | 1,466 | 1,468 |

2008-2009 Degrees Conferred by Gender and Ethnicity

| | <u>Female</u> | <u>Male</u> | <u>Total</u> |
|---------------------------|---------------|-------------|--------------|
| Amer Indian/Alaska Native | 5 | 1 | 6 |
| Asian/Pacific Islander | 10 | 2 | 12 |
| Black | 150 | 73 | 223 |
| Foreign | 33 | 94 | 127 |
| Hispanic | 14 | 3 | 17 |
| White | 686 | 389 | 1,075 |
| Race/Ethnicity Unknown | 6 | 2 | 8 |
| Total | 904 | 564 | 1,468 |

2008-2009 Degrees Conferred by Gender and Level

| | <u>Associate</u> | <u>Bachelor's</u> | <u>Master's</u> | <u>Total</u> |
|--------------|------------------|-------------------|-----------------|--------------|
| Female | 78 | 660 | 166 | 904 |
| Male | 44 | 389 | 131 | 564 |
| Total | 122 | 1,049 | 297 | 1,468 |

Historical Degrees Conferred by Gender

| | <u>04-05</u> | <u>05-06</u> | <u>06-07</u> | <u>07-08</u> | <u>08-09</u> |
|--------------|--------------|--------------|--------------|--------------|--------------|
| Female | 841 | 865 | 909 | 912 | 904 |
| Male | 516 | 547 | 544 | 554 | 564 |
| Total | 1,357 | 1,412 | 1,453 | 1,466 | 1,468 |

2008-2009 Degrees Conferred by Ethnicity and Level

| | <u>Associate</u> | <u>Bachelor's</u> | <u>Master's</u> | <u>Total</u> |
|---------------------------|------------------|-------------------|-----------------|--------------|
| Amer Indian/Alaska Native | | 6 | | 6 |
| Asian/Pacific Islander | 2 | 10 | | 12 |
| Black | 20 | 184 | 19 | 223 |
| Foreign | 5 | 31 | 91 | 127 |
| Hispanic | 1 | 12 | 4 | 17 |
| White | 94 | 798 | 183 | 1,075 |
| Race/Ethnicity Unknown | | 8 | | 8 |
| Total | 122 | 1,049 | 297 | 1,468 |

Historical Degrees Conferred by Ethnicity

| | <u>04-05</u> | <u>05-06</u> | <u>06-07</u> | <u>07-08</u> | <u>08-09</u> |
|---------------------------|--------------|--------------|--------------|--------------|--------------|
| Amer Indian/Alaska Native | 6 | 10 | 8 | 8 | 6 |
| Asian/Pacific Islander | 7 | 12 | 14 | 13 | 12 |
| Black | 212 | 209 | 235 | 234 | 223 |
| Foreign | 74 | 95 | 96 | 121 | 127 |
| Hispanic | 16 | 23 | 12 | 18 | 17 |
| White | 1,038 | 1,059 | 1,083 | 1,066 | 1,075 |
| Race/Ethnicity Unknown | 4 | 4 | 5 | 6 | 8 |
| Total | 1,357 | 1,412 | 1,453 | 1,466 | 1,468 |

Top 10 Bachelor's Degrees Conferred 2008–2009

| | <u>Number of Degrees</u> |
|--------------------------------------|--------------------------|
| BGS General Studies | 186 |
| BSN Nursing | 158 |
| BS Management | 57 |
| BS Engineering | 55 |
| BS Accounting | 45 |
| BS Psychology | 41 |
| BS Marketing | 38 |
| BS Elementary Education Gr 1-5 | 31 |
| BS Early Childhood Education Gr PK-3 | 31 |
| BS Mass Communication | 28 |

Top 5 Associate Degrees Conferred 2008–2009

| | <u>Number of Degrees</u> |
|------------------------------------|--------------------------|
| AGS General Studies | 46 |
| ADN Nursing | 40 |
| AS Engineering Technology | 18 |
| AA Paralegal Studies | 10 |
| AS Computer Information Technology | 7 |

Top 5 Master's Degrees Conferred 2008–2009

| | <u>Number of Degrees</u> |
|-----------------------------|--------------------------|
| MS Mathematical Sciences | 39 |
| Med Educational Leadership | 36 |
| MEng Engineering | 35 |
| MBA Business Administration | 30 |
| MSN Nursing | 29 |

Future Plans of Fall 2008 / Spring 2009 Graduates*

| <u>All Degree Levels</u> | <u>Fall 2008</u> | <u>Spring 2009</u> | <u>2008-09</u> |
|--|-------------------------|---------------------------|-----------------------|
| Employment, FT paid | 82.2% | 74.2% | 78.3% |
| Employment, PT paid | 1.9% | 2.2% | 2.1% |
| Grad/Prof school FT | 6.3% | 12.1% | 9.2% |
| Grad/Prof school PT | 5.5% | 6.3% | 5.9% |
| Additional UG coursework | 1.5% | 1.3% | 1.4% |
| Volunteer activity (Peace Corp) | | 0.7% | 0.3% |
| Military | 0.2% | | 0.1% |
| Starting or raising a family | 1.1% | 1.1% | 1.1% |
| Other | 1.3% | 2.0% | 1.6% |
| Total | 100.0% | 99.9% | 100.0% |
| | | | |
| <u>Bachelor Degree Level Only</u> | <u>Fall 2008</u> | <u>Spring 2009</u> | <u>2008-09</u> |
| Employment, FT paid | 78.4% | 73.6% | 76.0% |
| Employment, PT paid | 2.6% | 2.2% | 2.4% |
| Grad/Prof school FT | 8.2% | 11.0% | 9.6% |
| Grad/Prof school PT | 6.9% | 7.5% | 7.2% |
| Additional UG coursework | 1.6% | 0.6% | 1.1% |
| Volunteer activity (Peace Corp) | | 0.9% | 0.5% |
| Military | 0.3% | | 0.2% |
| Starting or raising a family | 1.3% | 1.6% | 1.4% |
| Other | 0.7% | 2.5% | 1.6% |
| Total | 100.0% | 99.9% | 100.0% |

*Survey administered each semester at GRAD Fest

64% of Completers responded to College portrait question: What is most likely to be your principal activity upon graduation?

**Student Credit Hours (SCH)
Fall 2009 SCH's by Department and Level**

| | Lower UG | Upper UG | Graduate | Total |
|---|---------------------|---------------------|-----------------|---------------|
| Accounting, Fin & Econ | 903 | 2,763 | 357 | 4,023 |
| Mgmt, Marketing and Gen Bus | 1,317 | 2,883 | 483 | 4,683 |
| <i>College of Business Total</i> | 2,220 | 5,646 | 840 | 8,706 |
| Educ Leadership & Instr Tech | 841 | 418 | 1,128 | 2,387 |
| Health & Human Performance | 2,718 | 2,491 | 342 | 5,551 |
| Psychology | 3,729 | 1,860 | 602 | 6,191 |
| Teacher Education | 894 | 2,724 | 879 | 4,497 |
| Stdnt Tchng & Prof Educ Srvc | | 423 | 132 | 555 |
| <i>College of Education Total</i> | 8,182 | 7,916 | 3,083 | 19,181 |
| Engineering | 716 | 1,635 | 619 | 2,970 |
| Engineering Technology | 352 | 565 | | 917 |
| <i>College of Engineering and Engineering Technology Total</i> | 1,068 | 2,200 | 619 | 3,887 |
| English & Foreign Languages | 7,678* | 2,159 | 334 | 10,171 |
| History | 4,497 | 1,557 | 15 | 6,069 |
| Mass Communications | 2,884 | 1,379 | 3 | 4,266 |
| Performing Arts | 2,005 | 1,176 | 26 | 3,207 |
| Social Sciences | 4,598 | 4,128 | 30 | 8,756 |
| Visual Arts | 1,131 | 1,494 | 15 | 2,640 |
| <i>College of Liberal Arts Total</i> | 22,793 | 11,893 | 423 | 31,902 |
| Graduate Nursing | | | 583 | 583 |
| Undergraduate Nursing | 320 | 5,533 | 10 | 5,863 |
| <i>College of Nursing Total</i> | 320 | 5,533 | 593 | 6,446 |
| Agriculture | 1,924 | 1,392 | 209 | 3,525 |
| Biology & Health Sciences | 5,770 | 2,914 | 20 | 8,704 |
| Chemistry | 2,388 | 1,205 | 151 | 3,744 |
| Math, Comp Sci, & Stat | 10,601** | 3,234 | 658 | 14,493 |
| Nutrition and Family Studies | 865 | 1,339 | 99 | 2,303 |
| Physics | 1,351 | 918 | 7 | 2,276 |
| <i>College of Science Total</i> | 22,899 | 11,002 | 1,144 | 35,045 |

* Includes 880 developmental

** Includes 2,024 developmental

Fall 2009 SCH's by Department and Level (continued)

| | Lower UG | Upper UG | Graduate | Total |
|---|----------------------|----------------------|---------------------|-----------------------|
| General and Basic Studies | 13 | 64 | | 77 |
| <i>Division of General and Basic Studies Total</i> | <i>13</i> | <i>64</i> | | <i>77</i> |
| Freshmen Foundations | 1,390 | 2 | | 1,392 |
| <i>Freshman Foundations Total</i> | <i>1,390</i> | <i>2</i> | | <i>1,392</i> |
| Military Science | 23 | 3 | | 26 |
| <i>Military Science Total</i> | <i>23</i> | <i>3</i> | | <i>26</i> |
| <i>University Total</i> | <i>58,908</i> | <i>44,259</i> | <i>6,702</i> | <i>109,869</i> |

Student rank classification is used to determine SCH level according to BOR definition.

Historical Fall SCH's by Department

| | 2005 | 2006 | 2007 | 2008 | 2009 |
|---|---------------|---------------|---------------|---------------|---------------|
| Accounting, Fin & Econ | 4,443 | 4,308 | 3,852 | 3,891 | 4,023 |
| Mgmt, Marketing and Gen Bus | 5,520 | 5,565 | 5,433 | 5,574 | 4,683 |
| <i>College of Business Total</i> | 9,963 | 9,873 | 9,285 | 9,465 | 8,706 |
| | | | | | |
| Educ Leadership & Instr Tech | 3,260 | 2,394 | 2,046 | 2,046 | 2,387 |
| Health & Human Performance | 4,835 | 4,643 | 5,380 | 4,882 | 5,551 |
| Psychology | 6,854 | 5,869 | 5,846 | 6,024 | 6,191 |
| Teacher Education | 4,504 | 3,958 | 3,592 | 3,605 | 4,497 |
| Student Tchng & Prof Educ Srvc | 909 | 726 | 636 | 477 | 555 |
| <i>College of Education Total</i> | 20,362 | 17,590 | 17,500 | 17,034 | 19,181 |
| | | | | | |
| Engineering | 2,352 | 2,467 | 3,129 | 2,877 | 2,970 |
| Engineering Technology | 1,038 | 1,143 | 1,129 | 1,157 | 917 |
| <i>College of Engineering and Engineering Technology Total</i> | 3,390 | 3,610 | 4,258 | 4,034 | 3,887 |
| | | | | | |
| English & Foreign Languages | 11,568 | 10,254 | 9,890 | 10,207 | 10,171 |
| History | 5,973 | 5,136 | 4,575 | 5,697 | 6,069 |
| Mass Communications | 3,732 | 3,811 | 3,923 | 4,106 | 4,266 |
| Performing Arts | 4,577 | 4,429 | 3,395 | 3,245 | 3,207 |
| Social Sciences | 9,758 | 8,578 | 8,106 | 7,922 | 8,756 |
| Visual Arts | 2,730 | 2,676 | 2,476 | 2,682 | 2,640 |
| <i>College of Liberal Arts Total</i> | 38,338 | 34,884 | 32,365 | 33,859 | 35,109 |
| | | | | | |
| Graduate Nursing | 366 | 355 | 578 | 607 | 583 |
| Undergraduate Nursing | 4,977 | 5,477 | 5,933 | 6,504 | 5,863 |
| <i>College of Nursing Total</i> | 5,343 | 5,832 | 6,511 | 7,111 | 6,446 |
| | | | | | |
| Agriculture* | 2,185 | 1,973 | 1,992 | 2,090 | 3,525 |
| Biological & Envr Sciences* | 10,107 | 8,719 | 9,845 | 9,529 | |
| Biology & Health Sciences* | | | | | 8,704 |
| Chemistry | 4,911 | 4,404 | 3,743 | 3,747 | 3,744 |
| Math, Comp Sci, & Stat | 14,854 | 14,386 | 13,573 | 14,110 | 14,493 |
| Nutrition and Family Studies | 2,710 | 2,847 | 2,276 | 1,982 | 2,303 |
| Physics | 2,075 | 2,150 | 1,881 | 1,743 | 2,276 |
| <i>College of Science Total</i> | 36,842 | 34,479 | 33,310 | 33,201 | 35,045 |

*In Spring 2009 Environmental Science was moved from Biological & Environmental Sciences to Agriculture.

Historical Fall SCH's by Department (continued)

| | <u>2005</u> | <u>2006</u> | <u>2007</u> | <u>2008</u> | <u>2009</u> |
|---|-----------------------|-----------------------|-----------------------|-----------------------|-----------------------|
| General and Basic Studies | 1,382 | 1,351 | 1,276 | 98 | 77 |
| <i>Division of General and Basic Studies Total</i> | <i>1,382</i> | <i>1,351</i> | <i>1,276</i> | <i>98</i> | <i>77</i> |
| Freshmen Foundations | | | | 1,351 | 1,392 |
| <i>Freshman Foundation Total</i> | | | | <i>1,351</i> | <i>1,392</i> |
| Military Science | | | | 13 | 26 |
| <i>Military Science Total</i> | | | | <i>13</i> | <i>26</i> |
| <i>Total</i> | <i>115,620</i> | <i>107,619</i> | <i>104,505</i> | <i>106,166</i> | <i>109,869</i> |

Spring 2010 SCH's by Department and Level

| | Lower UG | Upper UG | Graduate | Total |
|---|----------------------|----------------------|---------------------|----------------------|
| Accounting, Fin & Econ | 933 | 3,006 | 390 | 4,329 |
| Mgmt, Marketing and Gen Bus | 1,113 | 2,634 | 336 | 4,083 |
| <i>College of Business Total</i> | <i>2,046</i> | <i>5,640</i> | <i>726</i> | <i>8,412</i> |
| Educ Leadership & Instr Tech | 794 | 386 | 1,185 | 2,365 |
| Health & Human Performance | 2,575 | 2,385 | 250 | 5,210 |
| Psychology | 3,219 | 2,190 | 658 | 6,067 |
| Teacher Education | 1,134 | 2,973 | 879 | 4,986 |
| Stdnt Tchng & Prof Educ Srvc | | 639 | 165 | 804 |
| <i>College of Education Total</i> | <i>7,722</i> | <i>8,573</i> | <i>3,137</i> | <i>19,432</i> |
| Engineering | 493 | 1,748 | 471 | 2,712 |
| Engineering Technology | 253 | 570 | 3 | 826 |
| <i>College of Engineering and Engineering Technology Total</i> | <i>746</i> | <i>2,318</i> | <i>474</i> | <i>3,538</i> |
| English & Foreign Languages | 6,272* | 2,552 | 345 | 9,169 |
| History | 3,642 | 2,025 | 15 | 5,682 |
| Mass Communications | 2,551 | 1,556 | | 4,107 |
| Performing Arts | 1,664 | 1,322 | 25 | 3,011 |
| Social Sciences | 4,135 | 4,310 | 18 | 8,463 |
| Visual Arts | 1,068 | 1,611 | 18 | 2,697 |
| <i>College of Liberal Arts Total</i> | <i>19,332</i> | <i>13,376</i> | <i>421</i> | <i>33,129</i> |
| Graduate Nursing | | | 553 | 553 |
| Undergraduate Nursing | 518 | 5,616 | | 6,134 |
| <i>College of Nursing Total</i> | <i>518</i> | <i>5,616</i> | <i>553</i> | <i>6,687</i> |
| Agriculture | 1,355 | 1,484 | 331 | 3,170 |
| Biology & Health Sciences | 4,730 | 3,384 | 1 | 8,115 |
| Chemistry | 2,141 | 1,412 | 166 | 3,719 |
| Math, Comp Sci, & Stat | 8,191** | 3,393 | 569 | 12,153 |
| Nutrition and Family Studies | 870 | 1,535 | 60 | 2,465 |
| Physics | 1,043 | 865 | 11 | 1,919 |
| <i>College of Science Total</i> | <i>18,330</i> | <i>12,073</i> | <i>1,138</i> | <i>31,541</i> |

* Includes 660 developmental

** Includes 1,048 developmental

Spring 2010 SCH's by Department and Level (continued)

| | Lower UG | Upper UG | Graduate | Total |
|---|----------------------|----------------------|---------------------|-----------------------|
| General and Basic Studies | 7 | 60 | | 67 |
| <i>Division of General and Basic Studies Total</i> | <i>7</i> | <i>60</i> | | <i>67</i> |
| Freshmen Foundations | 272 | 2 | | 274 |
| <i>Freshman Foundations Total</i> | <i>272</i> | <i>2</i> | | <i>274</i> |
| Military Science | 14 | 4 | | 18 |
| <i>Military Science Total</i> | <i>14</i> | <i>4</i> | | <i>18</i> |
| <i>University Total</i> | <i>48,987</i> | <i>47,662</i> | <i>6,449</i> | <i>103,098</i> |

Student rank classification is used to determine SCH level according to BOR definition.

Historical Spring SCH's by Department

| | <u>2006</u> | <u>2007</u> | <u>2008</u> | <u>2009</u> | <u>2010</u> |
|---|----------------------|----------------------|----------------------|----------------------|----------------------|
| Accounting, Fin & Econ | 4,683 | 4,368 | 4,020 | 3,780 | 4,329 |
| Mgmt, Marketing and Gen Bus | 5,565 | 5,265 | 5,142 | 4,761 | 4,083 |
| <i>College of Business Total</i> | <i>10,248</i> | <i>9,633</i> | <i>9,162</i> | <i>8,541</i> | <i>8,412</i> |
| | | | | | |
| Educ Leadership & Instr Tech | 2,567 | 2,177 | 2,328 | 2,004 | 2,365 |
| Health & Human Performance | 4,499 | 4,975 | 5,343 | 5,041 | 5,210 |
| Psychology | 6,183 | 5,831 | 5,628 | 5,923 | 6,067 |
| Teacher Education | 3,976 | 3,919 | 3,812 | 3,816 | 4,986 |
| Student Tchng & Prof Educ Srvc | 681 | 801 | 744 | 567 | 804 |
| <i>College of Education Total</i> | <i>17,906</i> | <i>17,703</i> | <i>17,855</i> | <i>17,351</i> | <i>19,432</i> |
| | | | | | |
| Engineering | 2,340 | 2,991 | 2,745 | 2,711 | 2,712 |
| Engineering Technology | 1,128 | 1,051 | 1,149 | 959 | 826 |
| <i>College of Engineering and Engineering Technology Total</i> | <i>3,468</i> | <i>4,042</i> | <i>3,894</i> | <i>3,670</i> | <i>3,538</i> |
| | | | | | |
| English & Foreign Languages | 9,301 | 8,454 | 8,437 | 8,564 | 9,169 |
| History | 5,262 | 4,857 | 4,641 | 5,658 | 5,682 |
| Mass Communications | 3,160 | 3,819 | 3,976 | 4,059 | 4,107 |
| Performing Arts | 3,831 | 3,824 | 2,965 | 2,893 | 3,011 |
| Social Sciences | 8,779 | 8,068 | 7,822 | 7,900 | 8,463 |
| Visual Arts | 2,652 | 2,812 | 2,616 | 2,652 | 2,697 |
| <i>College of Liberal Arts Total</i> | <i>32,985</i> | <i>31,834</i> | <i>30,457</i> | <i>31,726</i> | <i>33,129</i> |
| | | | | | |
| Graduate Nursing | 342 | 338 | 553 | 522 | 553 |
| Undergraduate Nursing | 4,904 | 5,890 | 6,128 | 6,232 | 6,134 |
| <i>College of Nursing Total</i> | <i>5,246</i> | <i>6,228</i> | <i>6,681</i> | <i>6,754</i> | <i>6,687</i> |
| | | | | | |
| Agriculture* | 1,625 | 1,442 | 1,651 | 2,824 | 3,170 |
| Biological & Envr Sciences* | 9,045 | 8,895 | 9,208 | | |
| Biology & Health Sciences* | | | | 7,779 | 8,115 |
| Chemistry | 4,193 | 4,123 | 3,495 | 3,400 | 3,719 |
| Math, Comp Sci, & Stat | 12,437 | 12,075 | 11,939 | 11,762 | 12,153 |
| Nutrition and Family Studies | 2,984 | 2,790 | 2,354 | 2,067 | 2,465 |
| Physics | 2,046 | 1,918 | 1,646 | 1,724 | 1,919 |
| <i>College of Science Total</i> | <i>32,330</i> | <i>31,243</i> | <i>30,293</i> | <i>29,556</i> | <i>31,541</i> |

*In Spring 2009 Environmental Science was moved from Biological & Environmental Sciences to Agriculture.

Historical Spring SCH's by Department (continued)

| | <u>2006</u> | <u>2007</u> | <u>2008</u> | <u>2009</u> | <u>2010</u> |
|---|----------------|----------------|---------------|---------------|----------------|
| General and Basic Studies | 228 | 216 | 177 | 98 | 67 |
| <i>Division of General and Basic Studies Total</i> | 228 | 216 | 177 | 98 | 67 |
| Freshmen Foundations | | | 57 | 296 | 274 |
| <i>Freshman Foundation Total</i> | | | 57 | 296 | 274 |
| Military Science | | | 12 | 14 | 18 |
| <i>Military Science Total</i> | | | 12 | 14 | 18 |
| <i>Total</i> | 102,411 | 100,899 | 98,588 | 98,006 | 103,098 |

Academic Year 2009 -2010 Average Teaching Load by Department

| | |
|---|---------------------|
| Accounting, Fin & Econ | 24.00 |
| Mgmt, Marketing and Gen Bus | 24.18 |
| <i>College of Business Total</i> | <i>24.10</i> |
| | |
| Educ Leadership & Instr Tech | 25.33 |
| Health & Human Performance | 31.14 |
| Psychology | 27.59 |
| Teacher Education | 27.69 |
| Student Tchng & Prof Educ Srvc | 16.50 |
| <i>College of Education Total</i> | <i>27.54</i> |
| | |
| Engineering | 24.58 |
| Engineering Technology | 27.99 |
| <i>College of Engineering and Engineering Technology Total</i> | <i>25.84</i> |
| | |
| English & Foreign Languages | 25.87 |
| History | 25.78 |
| Mass Communications | 29.30 |
| Performing Arts | 28.26 |
| Social Sciences | 26.67 |
| Visual Arts | 26.09 |
| <i>College of Liberal Arts Total</i> | <i>26.97</i> |
| | |
| Graduate Nursing | 36.82 |
| Undergraduate Nursing | 33.94 |
| <i>College of Nursing Total</i> | <i>34.03</i> |
| | |
| Agriculture | 24.10 |
| Biology & Health Sciences | 27.39 |
| Chemistry | 25.80 |
| Math, Comp Sci, & Stat | 26.68 |
| Nutrition and Family Studies | 28.10 |
| Physics | 29.67 |
| <i>College of Science Total</i> | <i>26.73</i> |
| | |
| <i>University Total</i> | <i>27.50</i> |

Teaching load only reflects teaching load in organized class sections and does not reflect other required work duties such as course grading, curriculum development, accreditation, advising, research, public service and university service.

Financial Aid

| | <u>04-05</u> | <u>05-06</u> | <u>06-07</u> | <u>07-08</u> | <u>08-09</u> |
|-----------------------------------|--------------|--------------|--------------|--------------|--------------|
| Unduplicated Count of Students | 10,558 | 10,393 | 9,828 | 9,776 | 9,969 |
| Undergraduates Receiving Aid | 6,907 | 6,702 | 6,201 | 6,400 | 6,556 |
| % of Undergraduates Receiving Aid | 77% | 75% | 74% | 77% | 77% |
| Amount of Undergraduate Aid | \$40,465,577 | \$40,892,953 | \$37,426,588 | \$39,984,240 | \$44,056,716 |
| Graduates Receiving Aid | 873 | 794 | 769 | 912 | 834 |
| % of Graduates Receiving Aid | 54% | 51% | 52% | 59% | 54% |
| Amount of Graduate Aid | \$5,263,199 | \$5,550,945 | \$4,545,992 | \$5,615,722 | \$6,029,461 |
| Students Receiving Federal Aid | 5,087 | 4,697 | 4,390 | 4,338 | 4,442 |
| Amount of Federal Aid | \$29,261,039 | \$29,796,446 | \$27,491,063 | \$27,279,743 | \$30,642,301 |

Fall 2008 Full-Time First-Time UG Students Receiving Aid

| <u>Type of Aid</u> | <u>% Receiving Aid</u> | <u>Average Amount</u> |
|-----------------------|------------------------|-----------------------|
| Grants / Scholarships | 69% | \$4,532 |
| PELL Grant | 29% | \$3,475 |
| Federal Student Loans | 36% | \$6,628 |

Full-Time Average Annual Fees 2009-2010 (Fall and Spring Semesters)

| | <u>Undergraduate (15 hours)</u> | <u>Graduate (9 hours)</u> |
|---|-------------------------------------|-------------------------------|
| In-State Undergraduate Tuition & Fees | \$3,587 | \$3,976 |
| Out-of-State Undergraduate Tuition & Fees | \$10,259 | \$10,648 |

Student Charges 2009-2010 Academic Year

| | |
|-----------------------------------|---------|
| Room (based on semi-private dorm) | \$2,500 |
| Board (average meal plan) | \$2,174 |

Revenues
Operating (Unrestricted) Fund

| | Actual 2007-2008 | % | Actual 2008-2009 | % | Budgeted 2009-2010 | % |
|------------------------------|-----------------------------|---------------|-----------------------------|---------------|-------------------------------|---------------|
| Revenues by Source | | | | | | |
| State Funds | \$43,247,275 | 65.0% | \$43,479,359 | 65.9% | \$34,128,908 | 49.5% |
| Interagency Transfers – ARRA | | | | | \$5,749,198 | 8.4% |
| Self-Generated Funds | \$23,335,037 | 35.0% | \$22,526,603 | 34.1% | \$29,005,188 | 42.1% |
| Total Revenues | \$66,582,312 | 100.0% | \$66,005,962 | 100.0% | \$68,883,294 | 100.0% |

Expenditures
Operating (Unrestricted) Fund

| | Actual 2007-2008 | % | Actual 2008-2009 | % | Budgeted 2009-2010 | % |
|---------------------------------|-----------------------------|---------------|-----------------------------|---------------|-------------------------------|---------------|
| Expenditures by Function | | | | | | |
| Instruction | \$29,240,459 | 43.9% | \$29,890,505 | 45.3% | \$30,837,274 | 44.8% |
| Research | \$761,025 | 1.1% | \$869,862 | 1.3% | \$1,480,982 | 2.1% |
| Academic Support | \$6,411,332 | 9.6% | \$6,640,597 | 10.0% | \$6,539,100 | 9.5% |
| Student Services | \$4,365,230 | 6.6% | \$4,229,407 | 6.4% | \$4,216,240 | 6.1% |
| Institutional Services | \$7,837,519 | 11.8% | \$7,767,754 | 11.8% | \$8,200,203 | 11.9% |
| Scholarships/Fellowships | \$3,889,779 | 5.8% | \$3,941,381 | 6.0% | \$4,635,000 | 6.7% |
| Plant Operations/Maintenance | \$8,767,408 | 13.2% | \$6,602,292 | 10.0% | \$7,012,959 | 10.2% |
| Transfers out of agency | \$1,919,879 | 2.9% | \$2,068,656 | 3.1% | \$2,138,375 | 3.1% |
| Athletics | \$3,333,682 | 5.0% | \$3,748,818 | 5.7% | \$3,166,557 | 4.6% |
| Other | \$56,000 | 0.1% | \$246,688 | 0.4% | \$656,604 | 1.0% |
| Total Expenditures | \$66,582,312 | 100.0% | \$66,005,962 | 100.0% | \$68,883,294 | 100.0% |

| | Actual 2007-2008 | % | Actual 2008-2009 | % | Budgeted 2009-2010 | % |
|---|-----------------------------|---------------|-----------------------------|---------------|-------------------------------|---------------|
| Expenditures by Expense Category | | | | | | |
| Salaries | \$34,617,280 | 52.0% | \$37,198,471 | 56.3% | \$36,599,279 | 53.13% |
| Other Compensation | \$567,932 | 0.8% | \$714,961 | 1.1% | \$565,067 | 0.82% |
| Related Benefits | \$10,858,469 | 16.3% | \$11,182,209 | 16.9% | \$11,843,642 | 17.19% |
| Travel | \$406,338 | 0.6% | \$238,270 | 0.4% | \$133,057 | 0.19% |
| Operating Services | \$4,510,722 | 6.8% | \$3,883,626 | 5.9% | \$4,595,168 | 6.67% |
| Supplies | \$844,056 | 1.3% | \$712,242 | 1.1% | \$674,164 | 0.98% |
| Professional Services | \$318,699 | 0.5% | \$302,018 | 0.5% | \$173,373 | 0.25% |
| Other Charges | \$7,621,889 | 11.4% | \$8,262,568 | 12.5% | \$8,761,661 | 12.72% |
| Interagency Transfers | \$1,919,879 | 2.9% | \$2,068,656 | 3.1% | \$2,138,375 | 3.11% |
| General Acquisitions | \$2,219,785 | 3.3% | \$259,492 | 0.4% | \$19,000 | 0.03% |
| Library Acquisitions | \$526,785 | .8% | \$307,565 | 0.5% | \$100,000 | 0.15% |
| Major Repairs | \$2,170,478 | 3.3% | \$875,884 | 1.3% | \$3,280,508 | 4.76% |
| Total Expenditures | \$66,582,312 | 100.0% | \$66,005,862 | 100.0% | \$68,883,294 | 100.0% |

Faculty/Staff

Fall 2009 Full-Time Faculty by Rank

| | Tenured | On tenure track | Not on tenure track | Total | Percent |
|----------------------|------------|-----------------|---------------------|------------|---------------|
| Professors | 64 | | 1 | 65 | 21.1% |
| Associate Professors | 49 | 1 | 1 | 51 | 16.6% |
| Assistant Professors | 51 | 79 | 11 | 141 | 45.7% |
| Instructors | | | 51 | 51 | 16.6% |
| Total | 164 | 80 | 64 | 308 | 100.0% |

Fall 2009 Full-Time Faculty by Highest Degree

| | Tenured | On tenure track | Not on tenure track | Total | Percent |
|------------------|------------|-----------------|---------------------|------------|---------------|
| Bachelors | | | 2 | 2 | .7% |
| Masters | 39 | 18 | 46 | 103 | 33.4% |
| Terminal Masters | 8 | 4 | 7 | 19 | 6.2% |
| Doctorate | 117 | 58 | 9 | 184 | 59.7% |
| Total | 164 | 80 | 64 | 308 | 100.0% |

Fall 2009 Full-Time Faculty by Race and Gender

| | Men | Women | Total | Percent |
|------------------------|------------|------------|------------|---------------|
| Asian/Pacific Islander | 23 | 3 | 26 | 8.5% |
| Black, non-Hispanic | 4 | 11 | 15 | 4.9% |
| Foreign | | 1 | 1 | 0.3% |
| Hispanic | 1 | | 1 | 0.3% |
| White, non-Hispanic | 142 | 123 | 265 | 86.0% |
| Total | 170 | 138 | 308 | 100.0% |

Full-Time Equivalent Faculty

| | |
|--------------|-------|
| 09-10 | 343.1 |
| 08-09 | 362.3 |
| 07-08 | 368.7 |
| 06-07 | 339.3 |
| 05-06 | 343.0 |
| 04-05 | 343.2 |

Student to Faculty Ratio*

| | |
|------------------|---------|
| Fall 2009 | 21 to 1 |
| Fall 2008 | 19 to 1 |
| Fall 2007 | 20 to 1 |
| Fall 2006 | 21 to 1 |
| Fall 2005 | 22 to 1 |

* (Full-Time students + 1/3 Part-Time students) / (Full-Time faculty + 1/3 Part-Time faculty)

Fall 2009 Classes taught by Faculty Type

| | Dev | Lower Level | Upper Level | Graduate | Total |
|-------------------|------------|--------------------|--------------------|-----------------|--------------|
| Full-Time Faculty | | 878 | 688 | 236 | 1,802 |
| Part-Time Faculty | 76 | 146 | 83 | 11 | 316 |
| Total | 76 | 1,024 | 771 | 247 | 2,118 |

Fall 2009 Employees by Occupational Activity

| | Full-Time | Part-Time | Total | Percent |
|---------------------------------------|------------------|------------------|--------------|----------------|
| Primarily Instruction | 308 | 102 | 410 | 45.8% |
| Executive/administrative/managerial | 51 | | 51 | 5.7% |
| Other professionals (support/service) | 169 | 12 | 181 | 20.2% |
| Technical and paraprofessionals | 47 | 3 | 50 | 5.6% |
| Clerical and secretarial | 102 | 4 | 106 | 11.8% |
| Skilled crafts | 21 | 1 | 22 | 2.4% |
| Service/Maintenance | 73 | 3 | 76 | 8.5% |
| Total | 771 | 125 | 896 | 100.0% |

Fall 2009 Employees by Race and Gender

| | Men | Women | Total | Percent |
|-------------------------------|------------|--------------|--------------|----------------|
| American Indian/Alaska Native | 1 | 2 | 3 | 0.3% |
| Asian/Pacific Islander | 26 | 7 | 33 | 3.7% |
| Black, non-Hispanic | 53 | 79 | 132 | 14.7% |
| Foreign, Non-Resident | 1 | 2 | 3 | 0.3% |
| Hispanic | 3 | 1 | 4 | 0.5% |
| White, non-Hispanic | 304 | 417 | 721 | 80.5% |
| Total | 388 | 508 | 896 | 100.0% |

Facilities

| | Owned | Leased | Total |
|--|--------------|--------------|--------------|
| Land Holdings | 500.95 Acres | 265.45 Acres | 766.40 Acres |
| Building Gross Square Footage | 1,407,857 | 344,096 | 1,751,953 |
| Building Net Assignable Square Footage | 983,420 | 265,289 | 1,248,709 |

Net Assignable Space by Allocation Category

| | Square Feet | % Total |
|----------------|----------------|---------------|
| Academic | 500,539 | 55.1% |
| Administrative | 63,114 | 6.9% |
| Athletics | 51,643 | 5.7% |
| Auxiliary* | 202,815 | 22.3% |
| Residential** | 91,194 | 10.0% |
| Total | 909,305 | 100.0% |

* Does not include 265,289 square feet for Burton Coliseum which is leased from Calcasieu Parish Police Jury and is used for basketball games and graduation twice a year.

** Does not include 74,115 square feet for Burton Dorm which is currently closed.