

The Log
McNeese State University
2019-2020
Vol. 77



4205 Ryan St.,
Lake Charles, LA 70609



Calcasieu Parish
Police Jury
Engineering
Department

Business Hours
Monday - Friday
8:00 A.M. - 12:00 P.M.
1:00 P.M. - 5:00 P.M.





Campus closures and restrictions on public events and public gatherings due to the COVID-19 pandemic bore a significant impact on McNeese's otherwise vibrant campus life. As we pivoted to online instruction, most student activities, including athletic events, were canceled and only a few were transitioned to a virtual format.

Unfortunately, we were unable to collect the images that typically project the memories and nostalgia of college life; but we carry forward a unique, shared experience — an inspiring bond of strength, determination and resilience that gives us the confidence that we can accomplish anything, no matter how trying the circumstances may be.

This is what it means to be part of the McNeese family — we are Cowboy Strong!





EVENTS

SPORTS

STUDENTS

**THE GREEKS &
ORGANIZATIONS**





M







EVENTS



EVENTS

McNEESE COWBOY CAMP 2019

"Cowboy Camp is a two-day program specifically designed to help students get connected to McNeese, learn to become a leader and meet people in their incoming class that are motivated to be engaged on campus. Students who attend Cowboy Camp are better prepared for the first day of classes," said Dr. Kedrick Nicholas, dean of student services.

COWBOY CAMP



EVENTS

NEW KAUFMAN PLAZA FOR 80TH ANNIVERSARY

McNeese State University commemorated its 80th anniversary with a ribbon cutting ceremony to dedicate the opening of the new Kaufman Plaza facing Ryan Street. McNeese officially opened its doors for classes on Sept. 11, 1939, with 140 students and 13 faculty members in Kaufman Hall, one of three original buildings on campus.

The Kaufman Plaza dedication was held jointly with Patriot Day, an annual observance to remember those who were injured or died during the terrorist attacks on the United States on Sept. 11, 2001. The ceremony featured a speech from Navy veteran and McNeese Banners outreach coordinator Greg Leute and concluded with the lowering of the American, McNeese and Louisiana flags to half-mast.

NEW KAUFMAN PLAZA



EVENTS

McNEESE 2019 HOMECOMING COURT

McNeese State University students Hailey Goodwin, a nursing senior from Lake Charles, and Steven Gros, an agricultural sciences senior from Napoleonville, have been named McNeese's 2019 Homecoming Queen and King.

Other court members are: Keontae Anderson, Vinton, Andrew Eakin, Sulphur, Maggie McBride, Lake Charles, and Ashlee Sebren, Eros, seniors; John Dalton, College Station, Texas, Kinley Holmes, Sulphur, Jordan Latham, Moss Bluff, and Gavin Nettles, Lake Charles, juniors; Robert Hall, Shreveport, and Breanna Newell, Opelousas, sophomores; and Maycie Fuselier, Elton, and Jake Latham, Moss Bluff, freshmen.



2019 HOMECOMING COURT



Keontae Anderson



Andrew Eakin



Maggie McBride



Ashlee Sebren



John Dalton



Kinley Holmes



Jordan Latham



Gavin Nettles



Robert Hall



Breanna Newell



Maycie Fuselier



Jake Latham

EVENTS

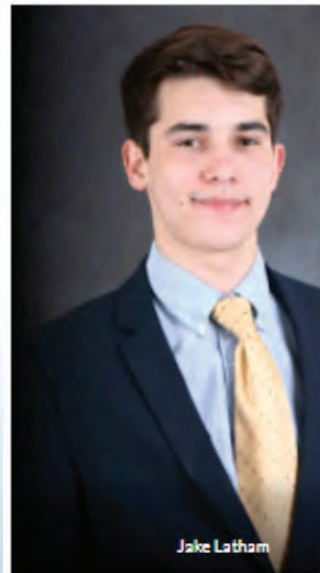
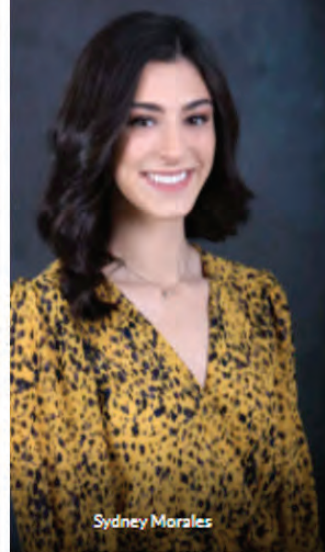
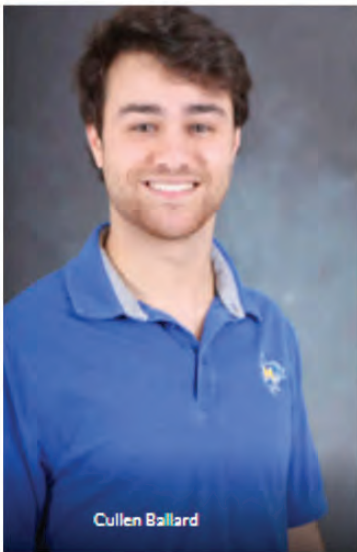
McNEESE 2020 SPRING COURT

McNeese State University health and human performance seniors Andrew Eakin, Sulphur, and Carlee Smith, Nederland, Texas, have been selected Mr. and Miss McNeese on the 2020 Spring Court.

Other court members are: Cullen Ballard, Luling, Allison Blanchard, Lake Charles, Jacob Guidry, Lake Charles, and Sydney Morales, Lake Charles, seniors; Tristan Baggett, Sulphur, Amelia Landreneau, Moss Bluff, Charla McInnis, Anacoco, and Hasan Mir, Lake Charles, juniors; Claire Adams, Lake Charles, and Ethan Anderson, Lake Charles, sophomores; and Jake Latham, Moss Bluff, and Madison Sittig, Iota, freshmen.



2020 SPRING COURT



EVENTS

STUDENTS KEEP McNEESE FARM OPERATING

McNeese's College of Agricultural Sciences relied on a team of students to keep its more than 1,000 acres of agricultural land and three farms operational during the COVID-19 pandemic.

This crucial work included everything from planting seasonal crops for research and providing daily care for the animals housed at the farms to processing honey and meat for local retailers and the McNeese CAMPP store.

STUDENTS KEEP MCNEESE FARM OPERATING





SPORTS



WOMEN'S TRACK AND FIELD

SPRINTS	TANEISHA ALLEN	MIDDLE DISTANCE	JACLYN GONZALES
MIDDLE DISTANCE	SHANIA ANTHONY	DISTANCE	SOPHIE GRABNER
THROWS	ALANNA ARVIE	JUMPS	SHAELYN HINES
JUMPS	JORDYN BARRETT	DISTANCE	PRISCILLA IBARRA
THROWS	KIRA BENKMANN	POLE VAULT	CAMRYN ISTRE
MIDDLE DISTANCE	ALEXIS BOURG	SPRINTS/JUMPS	MALAIYA JEDKINS
HURDLES	BRENTNEY CARROLL	DISTANCE	GLADYS JEROTICH
HIGH JUMP	CRYSTAL COULTER	SPRINTS	DESTINY JOHNSON
MULTIS	TAYA DIXON	DISTANCE	ALISSA LANDER
SPRINTS	ALEYAH DONALD	DISTANCE	MARTA LUKIJANIUK
MULTIS	GEORGIA DOYLE-LAY	POLE VAULT	MCKENZIE MCCOY
DISTANCE	ALEX EYKELBOSCH	SPRINTS/JUMPS	CARLI MCDONALD
DISTANCE	JESSICA FOX	MULTIS	GRACE MCKENZIE
MIDDLE DISTANCE	BAILEY FRUGE	SPRINTS	VICTORIA PIERSON
DISTANCE	CIARA GILROY	DISTANCE	ESTELA PINA
DISTANCE	HAILE GILROY	JUMPS	MORGAN TALLEY
MIDDLE DISTANCE	EMMA GODFREY	JUMPS	HEAVEN TERRELL
HURDLES	RACHEL WOODS	DISTANCE	JORDAN WAINE

COACHES	
HEAD COACH	BRENDON GILROY
ASSISTANT COACH (THROWS, VERTICAL JUMPS)	BEN CHRETIEN
ASSISTANT COACH (SPRINTS, HORIZONTAL JUMPS)	VIJAY SAXENA
ASSISTANT COACH/POLE VAULT	BYRON HIXON
VOLUNTEER ASSISTANT COACH (HORIZONTAL)	JOHN LEMKE
ASSISTANT AD/SPORTS INFORMATION DIRECTOR	MATTHEW BONNETTE
ASSISTANT DIRECTOR OF STUDENT ATHLETE SERVICES	SANDI RODRIGUEZ

2019



WOMEN'S TRACK AND FIELD

SPRINTS/JUMPS	TIA ANDREWS	DISTANCE	PRISCILLA IBARRA
SPRINTS	SHANIA ANTHONY	SPRINTS/JUMPS	MALAIYA JEDKINS
THROWS	ALANNA ARVIE	SPRINTS/JUMPS	N'SHARI JEFFERSON
JAVELIN	BLANCHE BEARD	SPRINTS	DESTINY JOHNSON
THROWS	KIRA BENKMANN	DISTANCE	ALISSA LANDER
JAVELIN	VICTORIA CANTER	SPRINTS	MARIAH LEE
HURDLES	BRENTNEY CARROLL	DISTANCE	MARTA LUKIJANIUK
SPRINTS	JORDAN CARTER	SPRINTS/JUMPS	CARLI MCDONALD
SPRINTS	PAIGELYN CARTER	MULTIS	GRACE MCKENZIE
SPRINTS	BRITTANY CLARK	SPRINTS	VICTORIA PIERSON
POLE VAULT	ALEXIS DEVILLE	JUMPS	ZUR'NAJAH POUILLARD
SPRINTS	ALEYAH DONALD	DISTANCE	HOLLY ROBERTS
DISTANCE	JESSICA FOX	JUMPS	MORGAN TALLEY
MIDDLE DISTANCE	BAILEY FRUGE	JUMPS	HEAVEN TERRELL
DISTANCE	CIARA GILROY	THROWS	ANE TORRES
DISTANCE	HAILE GILROY	SPRINTS/JUMPS	DREUNNA WASHINGTON
DISTANCE	SOPHIE GRABNER	JAVELIN	MORGAN WOODS
THROWS	CHLOE HERNANDEZ	HURDLES	RACHEL WOODS
JUMPS/HURDLES	SHAELYN HINES	DISTANCE	SALLY-ANN HUGHES

COACHES

HEAD COACH	BRENDON GILROY
ASSISTANT COACH (THROWS, VERTICAL JUMPS)	BEN CHRETIEN
ASSISTANT COACH (SPRINTS, HORIZONTAL JUMPS)	VIJAY SAXENA
ASSISTANT COACH/POLE VAULT	BYRON HIXON
VOLUNTEER ASSISTANT COACH (HORIZONTAL)	JOHN LEMKE
ASSISTANT AD/SPORTS INFORMATION DIRECTOR	MATTHEW BONNETTE
ASSISTANT DIRECTOR OF STUDENT ATHLETE SERVICES	SANDI RODRIGUEZ

2020



MEN'S TRACK AND FIELD

SPRINTS	TERRILL BANKS JR.
DISTANCE	MIGUEL BERRERA-LOPEZ
JUMPS	MARCELLUS BOYKINS
SPRINTS	GARED BROWN
MULTIS	LEWIS CAIN
SPRINTS	JALON CHARELS
SPRINTS	BLAKE COMEAUX
DISTANCE	JOEY CROFT
MULTIS	JELLE DE JONG
DISTANCE	WILLIAM DEVANY
THROWS	GARRET DIETERT
HURDLES	DARION DUNN
DISTANCE	KARL FITZMAURICE
DISTANCE	BRIAN FLANAGAN
POLE VAULT	BRENDAN FORD
MULTIS	MORGAN FREDERICK
DISTANCE	AARON GILLIAM
MULTIS	TERREN GILLS
HURDLES	BLAKE GRACE
DISTANCE	ERIC GREENE
DISTANCE	MATT GRIFFITHS
POLE VAULT	TYLER HIXON
DISTANCE	NIALL HOLT
DISTANCE	LUKE HORGAN
DISTANCE	MARKUS KOPP
TRIPLE JUMP/LONG JUMP	NEMANJA KOVILJAC

2019

HURDLES	KOREY LONDON
SPRINTS	KOBE NEVILLS
DISTANCE	DAMIAN O'BOYLE
THROWS	DARKO RADAKOVIC
SPRINTS	ETHAN RAPP
SPRINTS	JAKALUB RHODES
DISTANCE	DANIEL SAINA
JUMPS	LENTZ SIMILIEN
SPRINTS	MORGAN SMITH
SPRINTS	TYLER SMITH
SPRINTS	GAGE SOCHA
SPRINTS	TYLER SYRIE
POLE VAULT	ADRIANO THERIOT
SPRINTS	DIMITRI THORNTON
POLE VAULT	ANDREW TREME
JUMPS	KEVIN TRIPEAUX II
HURDLES	LUCAS-ARNO VOIGT
SPRINTS	WILSHAWN WILLIAMS

COACHES

HEAD COACH	BRENDON GILROY
ASSISTANT COACH (THROWS, MULTIS)	BEN CHRETIEN
ASSISTANT COACH (SPRINTS,	VIJAY SAXENA
ASSISTANT COACH/POLE VAULT	BYRON HIXON
VOLUNTEER ASSISTANT COACH	JOHN LEMKE
ASSISTANT AD/SPORTS INFORMATION	MATTHEW BONNETTE
ASSISTANT DIRECTOR OF STUDENT	SANDI RODRIGUEZ

MEN'S TRACK AND FIELD



2019



MEN'S TRACK AND FIELD

JAVELIN	DONAVON BANKS
SPRINTS	TERRILL BANKS JR.
DISTANCE	MIGUEL BERRERA-LOPEZ
MULTIS	MARCELLUS BOYKINS
JUMPS	KEAGAN BROUSSARD
SPRINTS	GARED BROWN
MULTIS	LEWIS CAIN
DISTANCE	JOEY CROFT
(BLANK)	JACOB DARBONNE
DISTANCE	WILLIAM DEVANY
THROWS	GARRET DIETERT
JUMPS / HURDLES	DARION DUNN
DISTANCE	BRIAN FLANAGAN
DISTANCE	HAYDEN FOOLKES
SPRINTS	CALEB FRANK
HURDLES	MORGAN FREDERICK
DISTANCE	AARON GILLIAM
HURDLES	BLAKE GRACE
DISTANCE	MATTHEW HARDING
POLE VAULT	TYLER HIXON
DISTANCE	LUKE HORGAN
JUMPS	KENTRELL JACKSON
JUMPS / HURDLES	RONNIE JACKSON
JUMPS	DUSAN JUROSEVIC
DISTANCE	HENRY KIPLAGAT
DISTANCE	MARKUS KOPP
JUMPS	NEMANJA KOVILJAC

2020

MULTIS	ZHULIEN MONEV
SPRINTS	KOBE NEVILLS
DISTANCE	DAMIAN O'BOYLE
SPRINTS	ETHAN RAPP
DISTANCE	DANIEL SAINA
JUMPS / HURDLES	ELIJUAN SINGLETON
SPRINTS	JALEN SMITH
SPRINTS	LADANN THOMAS
POLE VAULT	ANDREW TREME
JUMPS / JAVELIN	KEVIN TRIPEAUX II
HURDLES	LUCAS-ARNO VOIGT
SPRINTS	WILSHAWN WILLIAMS

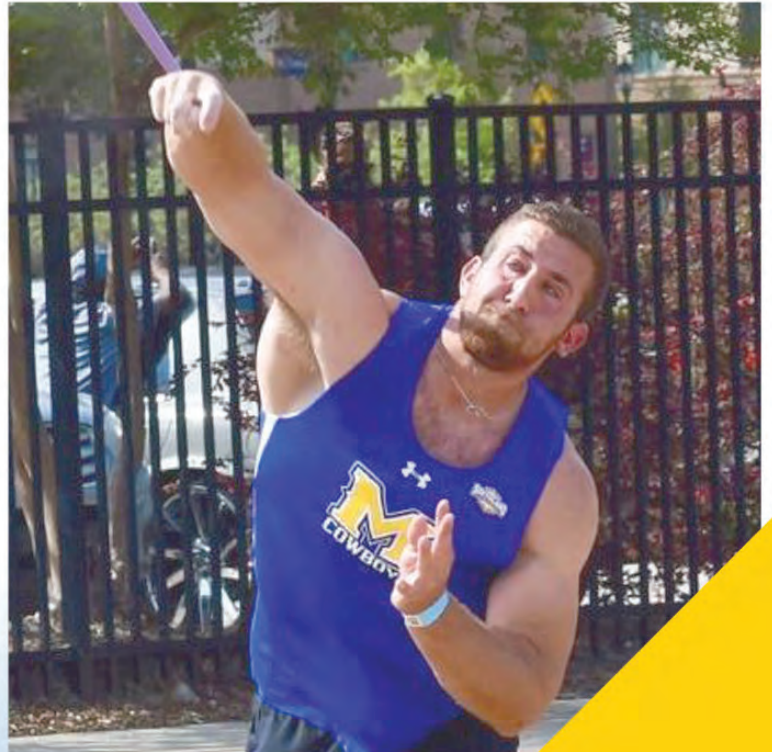
COACHES

HEAD COACH	BRENDON GILROY
ASSISTANT COACH (THROWS, MULTIS)	BEN CHRETIEN
ASSISTANT COACH (SPRINTS,	VIJAY SAXENA
ASSISTANT COACH/POLE VAULT	BYRON HIXON
VOLUNTEER ASSISTANT COACH	JOHN LEMKE
ASSISTANT AD/SPORTS INFORMATION	MATTHEW BONNETTE
ASSISTANT DIRECTOR OF STUDENT	SANDI RODRIGUEZ

MEN'S TRACK AND FIELD



2020



SOCCER

GOALKEEPER	KELLY HINES	0
GOALKEEPER	EMMA ROCCAFORTE	0
GOALKEEPER	GABRIELLE CHRISTY	1
DEFENDER	ALEXIS RODRIGUEZ	2
DEFENDER	REBECCA ADCOCK	3
FORWARD	MACAYLA BASS	4
DEFENDER	HAYLEY HALLIDAY	5
MIDFIELD/FORWARD	KAMBRIE MCFARLAND	6
MIDFIELD	MARIAH RUELAS	7
MIDFIELD	ANNA WATSON	8
FORWARD	BRIANNA MASCIA	9
MIDFIELD	KIANA KUKAUA	10
MIDFIELD	JILLIAN BECH	11
FORWARD	MADDIE NEIDIG	12
FORWARD	RACHEL YOUNG	13
FORWARD	MEGAN DONOVAN	14
DEFENDER	JUNA SUPPAN	16
MIDFIELD	RACHEL PALET	17
MIDFIELD	BROOKE MALLORY	18
DEFENDER	CARRIE KOTOUCEK	19
MIDFIELD	KEELY MORROW	20
FORWARD	CARISSA ADAMS	21
FORWARD	HAVANA JOHNSON	23

2019

MIDFIELD	ALEXIS MILLER	24
FORWARD	ISABEL KEMBEL	25
FORWARD	OLIVIA BROUSSARD	27
FORWARD	DELANA FRIESEN	28
MIDFIELD	CAROLINE FRITSCH	29
DEFENDER	KOLBI GONZALES	31

COACHES

HEAD SOCCER COACH	DREW FITZGERALD
ASSOCIATE HEAD COACH	NICK WHITING
ASSISTANT COACH	KYLEE HATHAWAY



MEN'S GOLF

THEO BERGER

BLAKE ELLIOTT

SUTTON FARMER

REID GIARDINA

JACK HEARN

NICKLAS MATTNER

TREY MEADOWS

CHASE WHITE

COACHES

INTERIM HEAD COACH

VOLUNTEER ASSISTANT

ADMINISTRATIVE ASSISTANT

GRADUATE ASSISTANT AT

ASSISTANT AD/SPORTS INFORMATION DIRECTOR

ACADEMIC COUNSELOR

MICHAEL FLUTY

BILLY GABBERT

SANDI RODRIGUEZ

ANNA HULLETT

MATTHEW BONNETTE

ALEXANDRA HALEY



2019



WOMEN'S GOLF

MARIA GARCIA

ANIKA HOVDA

ISABEL HUNTSMAN

RILEY ISAAC

SUNNY KILIAN

JANIE MORRISON

CAMERON NEWHOUSE

BETHANY REID

WOMEN'S GOLF COACHING STAFF

HEAD WOMEN'S GOLF COACH

ADMINISTRATIVE ASSISTANT

ASSISTANT SPORTS INFORMATION
DIRECTOR

ACADEMIC COUNSELOR

MICHAEL FLUTY

SANDI RODRIGUEZ

PAM LAFOSSE

ALEXANDRA HALEY



2019-2020



SOFTBALL

PITCHER	ALEXSANDRA FLORES	1
OUTFIELD	JUSTYCE MCCLAIN	2
UTILITY	SARA GEIER	3
UTILITY	KAYLEE LOPEZ	4
UTILITY	TAYLOR EDWARDS	5
CATCHER	DEMI BOUDREAUX	6
INFIELD	KRISTAN DEITZ	8
UTILITY	PADYN WILLIAMS	10
OUTFIELD	TONI PERRIN	11
PITCHER	AMBER COONS	12
INFIELD	TAYLOR PESINA	14
CATCHER	AUBREE TURBEVILLE	15
PITCHER	ASHLEY KONCIR	17
INFIELD	TAYLER STROTHER	18
CATCHER	AMY REED	19
PITCHER	SALEEN FLORES	20
OUTFIELD	LAUREN BROWN	22
INFIELD	HAYLEE BRINLEE	23
INFIELD	CORI MCCRARY	24
PITCHER	CAROLINE SETTLE	25
OUTFIELD	BRENIQUE WRIGHT	26
OUTFIELD	ALAYIS SENECA	28
CATCHER	GRACIE DEVALL	29
UTILITY	ALEXANDRIA SALDIVAR	32
INFIELD	MEGAN HOLMES	34

2019

COACHES

HEAD COACH	JAMES LANDRENEAU
ASSOCIATE HEAD COACH	KATIE ROUX
ASSISTANT COACH	DANI PRICE
VOLUNTEER ASSISTANT COACH	BAYLEE CORBELLO
DIRECTOR OF STRENGTH AND CONDITIONING	KYLE LITTLE
GRADUATE ASSISTANT AT (FOOTBALL, SOFTBALL)	VINCENT WILLIAMS
ASSISTANT SPORTS INFORMATION DIRECTOR	PAM LAFOSSE



SOFTBALL

PITCHER	ALEXSANDRA FLORES	1
SHORTSTOP	SYDNEY BELVIN	2
UTILITY	SARA GEIER	3
UTILITY	KAYLEE LOPEZ	4
PITCHER	WHITNEY TATE	5
CATCHER	REBEKAH DILAVORE	6
CATCHER	ADRIANA RAMIREZ	7
INFIELD	KRISTAN DEITZ	8
SHORTSTOP	CALEIGH CROSS	9
UTILITY	PADYN WILLIAMS	10
OUTFIELD	TONI PERRIN	11
CATCHER	GRACIE DEVALL	12
OUTFIELD / UTILITY	TANIECE TYSON	15
PITCHER	ASHLEY KONCIR	17
INFIELD	TAYLER STROTHER	18
CATCHER	AMY REED	19
PITCHER	SALEEN FLORES	20
UTILITY	JIL POUILLARD	21
OUTFIELD	LAUREN BROWN	22
INFIELD	HAYLEE BRINLEE	23
INFIELD	CORI MCCRARY	24
PITCHER	CAROLINE SETTLE	25
OUTFIELD	BRENIQUE WRIGHT	26
INFIELD	CAYLON BRABHAM	27
OUTFIELD	ALAYIS SENECA	28
UTILITY	ALEXANDRIA SALDIVAR	32
INFIELD	TIFFANY STECZO	34
CATCHER	JESSE LANDRY	35

2020

COACHES

HEAD COACH

JAMES LANDRENEAU

ASSISTANT COACH

ROBBIE TATE

ASSISTANT COACH

SHELLIE LANDRY

VOLUNTEER ASSISTANT

KASSIE JAMES



FOOTBALL

DEFENSIVE BACK	DARION DUNN	1	PLACE KICKER	ERIC MARTIN	26
WIDE RECEIVER	CRYON SUTTON	1	DEFENSIVE BACK	ENOS LEWIS	27
QUARTERBACK	CADE BARTLETT	2	DEFENSIVE BACK	ANDREW CROKER	28
DEFENSIVE BACK	CORY MCCOY	2	LINEBACKER	JAKE LAFLEUR	29
KICKER/PUNTER	NOAH ANDERSON	3	DEFENSIVE END	MARCUS FOSTER	30
WIDE RECEIVER	DAVION CURTIS	3	LINEBACKER	DORION POLLARD	31
DEFENSIVE BACK	COLBY BURTON	4	LINEBACKER	CARLOS SCOTT	32
RUNNING BACK	ELIJAH MACK	4	RUNNING BACK	J'UAN GROSS	33
WIDE RECEIVER	RHASHID BONNETTE	5	RUNNING BACK	J'COBI SKINNER	34
DEFENSIVE BACK	JOVON BURRISS	5	DEFENSIVE BACK	ANTHONY JOHNSON	35
DEFENSIVE BACK	CALUM FOSTER	6	TIGHT END	DONTAY HARGROVE	36
DEFENSIVE BACK	GABE FOSTER	7	RUNNING BACK	CARLO WILLIAMS	37
DEFENSIVE LINE	DAMIEN DEGRUY	8	PUNTER	BAILEY RABORN	38
QUARTERBACK	CODY ORGERON	8	LONG SNAPPER	JAKE SMITH	39
DEFENSIVE LINE	CODY ROSCOE	9	TIGHT END	DOMINIC PRUDHOMME	40
LINEBACKER	DARIUS DANIELS	10	LINEBACKER	ERIC RENE	41
QUARTERBACK	MATT KELLER	10	DEFENSIVE END	EARENEST GRAYSON III	42
KICKER/HOLDER	KADE DIXON	11	LINEBACKER	TYRELL FLUGENCE	43
LINEBACKER	KODY FULP	11	TIGHT END	JACOB LOGAN	44
QUARTERBACK	MATT GARDNER	12	LINEBACKER	TAHJ SAMUEL	45
WIDE RECEIVER	NATE BRISCOE	13	RUNNING BACK	MCCAYLON THIBEAUX	47
WIDE RECEIVER	DRAYSEAN HUDSON	14	LINEBACKER	ANDREW HYACINTH	48
WIDE RECEIVER	ZACH HAYES	15	DEFENSIVE END	CHRIS LIVINGS	49
DEFENSIVE BACK	COLBY RICHARDSON	16	LONG SNAPPER	TREY VONDENSTEIN	51
DEFENSIVE BACK	DARIUS JOHNSON	17	OFFENSIVE LINE	KYLE HERRIDGE	53
DEFENSIVE BACK	ELI JOHNSON	18	DEFENSIVE LINE	JONATHON HAGEON	54
WIDE RECEIVER	TYLER WASHINGTON	19	OFFENSIVE LINEMAN	CUTTER LEFTWICH	55
RUNNING BACK	JUSTIN PRATT	20	LINEBACKER	BRAYDEN ADAMS	56
DEFENSIVE BACK	ANDRE SAM	21	OFFENSIVE LINE	AARON MCDANIEL	57
RUNNING BACK	D'ANDRE HICKS	22	OFFENSIVE LINE	TANNER PUGH	58
LINEBACKER	KORDELL WILLIAMS	23	OFFENSIVE LINE	COLLIN FOUNTAIN	61
LINEBACKER	JUSTIN JACKSON	24	OFFENSIVE LINE	JOE LATRONICO	62
DEFENSIVE BACK	DARIUS SHIELDS	25	OFFENSIVE LINEMAN	CHARELY ZENO	63
LINEBACKER	KESHON BELL	26	OFFENSIVE LINE	JACK ZELEZINSKI	64
			LONG SNAPPER	CHANDLER PERER	65

2019

OFFENSIVE LINE	JUWAN FELIX	66
OFFENSIVE LINE	CALEB GRAY	68
OFFENSIVE LINE	GRANT BURGUILLOS	70
OFFENSIVE LINE	JAMARUS BOLDING	71
OFFENSIVE LINEMAN	TRE NEWTON	72
OFFENSIVE LINEMAN	CALVIN BARKAT	73
OFFENSIVE LINE	BLAISE SCRIBER	74
OFFENSIVE LINEMAN	ZACK JONES	75
OFFENSIVE LINE	DEMARCUS THOMAS	77
OFFENSIVE LINE	HAYDEN SHAW	78
OFFENSIVE LINEMAN	NICK HOLIDAY	79
TIGHT END	LOUIS CONERLY	80
WIDE RECEIVER	DEON CORMIER	81
WIDE RECEIVER	TREVOR BEGUE	83
TIGHT END	KJ BROWN	84
LONG SNAPPER	KYLE VARNELL	85
WIDE RECEIVER	MARKEL COTTEN	86
WIDE RECEIVER	MARKQUELL STEWART	87
WIDE RECEIVER	TYLIN BRYANT	88
WIDE RECEIVER	MASON PIERCE	89
DEFENSIVE LINE	JONTA JONES	90
DEFENSIVE LINE	TYRIQUE GIBSON	91
DEFENSIVE LINE	ARTHUR LOTT	92
DEFENSIVE LINE	STEVEN CONERLY	93
DEFENSIVE LINE	KALEB WENSON	94
DEFENSIVE LINE	CHASE DAVIS	95
DEFENSIVE LINE	C.J. SEMIEN	96
DEFENSIVE LINE	CAMRON PETERSON	97
DEFENSIVE END	LOGAN SONNIER	98
DEFENSIVE LINE	MARVAL BOURGEOIS	99
QUARTERBACK	MORGAN CLARK	N/A
LINEBACKER	TREY CLARK	N/A
RUNNING BACK	IVORY ROBERTS	N/A
LINEBACKER	BLAKE ROBINSON	N/A

COACHES	
HEAD COACH	STERLIN GILBERT
DEFENSIVE COORDINATOR	JIM GUSH
OFFENSIVE COORDINATOR	MATT MATTOX
DEFENSIVE BACKS	NICK GRAHAM
RUNNING BACKS	LANDON HOEFER
WIDE RECEIVERS	JEFF LEPAK
WIDE RECEIVERS	LANEAR SAMPSON
TIGHT ENDS	DEREK SHAY
LINEBACKERS	BRODY TRAHAN
DEFENSIVE LINE	BEN OLSON
DEFENSIVE BACKS	MARCUS WALKER
OFFENSIVE QUALITY CONTROL	KYLE WASHINGTON
DEFENSIVE QUALITY CONTROL	ZACH COLVIN

FOOTBALL



FOOTBALL



MEN'S BASKETBALL

GUARD	DRU KUXHAUSEN	0
FORWARD	JEREMY HARRELL	1
GUARD	SAM BAKER	2
GUARD	LEONDRE WASHINGTON	3
GUARD	EVEN PALMQUIST	5
GUARD	LUIS RIVAS	10
POINT GUARD	MYLES HUTCHINSON	11
GUARD	A.J. LAWSON	12
GUARD	TREY JOHNSON	13
GUARD	ROYDELL BROWN	22
FORWARD	SHA'MARKUS KENNEDY	23
FORWARD	CHRIS ORLINA	24
FORWARD	TRUMAN MOORE	44
GUARD	RA'SHAWN LANGSTON	N/A
GUARD	COLLIN WARREN	N/A

COACHES

HEAD COACH	HEATH SCHROYER
ASSOCIATE HEAD COACH	JOHN AIKEN
ASSISTANT COACH	MIKE DUBOSE
ASSISTANT COACH	JALEN COURTNEY
DIRECTOR OF BASKETBALL OPERATIONS	MATTHEW TAYLOR
ASSISTANT ATHLETIC TRAINER	MATT CHOICE
ASSISTANT STRENGTH & CONDITIONING COACH	JIMMIE BUNTING

2019-2020



WOMEN'S BASKETBALL

GUARD	LIZZY RATCLIFF	0
GUARD	REGAN BOLTON	1
FORWARD	BRE'ASHLEE JONES	2
POINT GUARD	JAHQUELL ROBISON	3
GUARD	RAYAH HAYNES	4
POINT GUARD	KYLA HAMILTON	12
FORWARD	DELILAH VAN CAMPEN	14
GUARD	SHAELA GARDNER	20
GUARD	CALLIE MADDOX	22
FORWARD	DIVINE TANKS	24
GUARD	SKY JASPER	25
FORWARD	DAMILOLA BALOGUN	30
POINT GUARD	JORDYN CROSS	33
POST	MAIA ROBINSON	40

COACHES

HEAD COACH	KACIE CRYER
ASSISTANT COACH	PATRECE CARTER
ASSISTANT COACH	AMANDA CLEMONS
ASSISTANT COACH	BRITTANY BIGOTT

2019-2020



VOLLEYBALL

MIDDLE BLOCKER/OPPOSITE	LAUREN BURT	1
SETTER	KENDALL KILCHRIST	2
OUTSIDE HITTER	REGAN STIAWALT	3
OUTSIDE HITTER	ALEXIS LAMBERT	4
DEFENSIVE SPECIALIST	CLARE MILLS	5
SETTER	CAITLIN SHARROCK	6
MIDDLE BLOCKER	ALLISON LIPPERT	7
DEFENSIVE SPECIALIST/LIBERO	ANGELA MCGOWND	8
MIDDLE BLOCKER/OUTSIDE HITTER	HALEY SCHNEIDER	9
OUTSIDE HITTER	KATELYN ELLIOTT	10
OPPOSITE/OUTSIDE HITTER	MACEE KRPEC	11
OUTSIDE HITTER	KEEGAN NELMS	12
OUTSIDE HITTER/DEFENSIVE SPECIALIST	MADISON FONTENOT	13
DEFENSIVE SPECIALIST/LIBERO	AVERY KELLY	14
SETTER	CALLIE CRAUS	21
OPPOSITE	KENDALL GLUECK	25
MIDDLE BLOCKER	AJANI HODGES	28

COACHES

HEAD VOLLEYBALL COACH	ASHLEIGH FITZGERALD
ASSISTANT COACH	LINDSEY PETZOLD
ASSISTANT COACH	JESSICA REBER

2019



BASEBALL

INFIELD	REID BOURQUE	1
INFIELD	WELLES COOLEY	2
PITCHER / OUTFIELD	ZACH RIDER	3
OUTFIELD	SHANE SELMAN	4
UTILITY	JAKE COCHRAN	8
PITCHER	BRYAN KING	9
UTILITY	NATE FISBECK	10
INFIELD	CARSON MAXWELL	11
CATCHER	SCHUYLER THIBODAUX	12
CATCHER / INFIELD	BRETT WHELTON	13
RIGHT-HANDED PITCHER	BRETT PAYNE	14
CATCHER / UTILITY	DUSTIN DUHON	15
OUTFIELD	JAKE DICKERSON	16
UTILITY	JACOB STRACNER	17
OUTFIELD	PAYTON HARDEN	18
RIGHT-HANDED PITCHER	DANIEL HECKER	20
LEFT-HANDED PITCHER	ANDREW WOOD	22
UTILITY	PEYTON JOHNSON	24
LEFT-HANDED PITCHER	ADAM GOREE	25
PITCHER / INFIELD	AIDAN ANDERSON	26
OUTFIELD	JULIAN GONZALES	27
RIGHT-HANDED PITCHER	BRAD KINCAID	28

2019

PITCHER	PEYTON MCLEMORE	30
LEFT-HANDED PITCHER	JONATHAN ELLISON	31
RIGHT-HANDED PITCHER	HUNTER REEVES	32
RIGHT-HANDED PITCHER	JOHN BOUSHELLE	33
OUTFIELD	CLAYTON RASBEARY	34
RIGHT-HANDED PITCHER	CAYNE UECKERT	35
PITCHER	AVERY FLIGER	36
INFIELD	MARK JOHNSTON	38
LEFT-HANDED PITCHER	BRODY STRAHAN	40
UTILITY	ZACK MAY	41
UTILITY	AUSTIN NELSON	43
PITCHER	RHETT DEATON	44
CATCHER	JACK GATES	45
LEFT-HANDED PITCHER	WILL DION	47

COACHES

HEAD COACH	JUSTIN HILL
ASSOCIATE HEAD COACH/PITCHING	NICK ZALESKI
ASSITANT COACH/RECRUITING	JIMMY RICKLEFSEN
ASSISTANT COACH	WILL FOX
GRADUATE ASSISTANT AT (BASEBALL)	KATE PINKERTON
ASSISTANT SPORTS INFORMATION	RYAN LANDRY

BASEBALL

OUTFIELD	PAYTON HARDEN	1
INFIELD	WELLES COOLEY	2
INFIELD	NATE FISBECK	3
OUTFIELD	JAXSEN DAVIS	4
CATCHER	TRE' OBREGON III	6
INFIELD/CATCHER	KADE MORRIS	8
LEFT-HANDED PITCHER	KALE BREAU	10
INFIELD	REID BOURQUE	11
CATCHER	SCHUYLER THIBODAUX	12
CATCHER/INFIELD	BRETT WHELTON	13
RIGHT-HANDED PITCHER	BRETT PAYNE	14
INFIELD	JORDAN ALEXANDER	15
UTILITY	JAKE DICKERSON	16
RIGHT-HANDED PITCHER	SEAN-MICHAEL BRADY	17
RIGHT-HANDED PITCHER	ISAAC DUPLCHAIN	18
LEFT-HANDED PITCHER	JONATHAN ELLISON	19
RIGHT-HANDED PITCHER	DANIEL HECKER	20
RIGHT-HANDED PITCHER	CAMERON MEEKS	21
LEFT-HANDED PITCHER	ANDREW WOOD	22
UTILITY	PEYTON JOHNSON	24
LEFT-HANDED PITCHER	ADAM GOREE	25
INFIELD	JORDAN YEATTS	26
OUTFIELD	JULIAN GONZALES	27

2020

RIGHT-HANDED PITCHER	BRAD KINCAID	28
RIGHT-HANDED PITCHER	CAMERON FOSTER	30
RIGHT-HANDED PITCHER	ZACK MAY	31
RIGHT-HANDED PITCHER	HUNTER REEVES	32
RIGHT-HANDED PITCHER	JOHN BOUSHELLE	33
OUTFIELD	CLAYTON RASBEARY	34
RIGHT-HANDED PITCHER	ANDREW SHERIDAN	35
RIGHT-HANDED PITCHER	JT PELOQUIN	37
CATCHER	MATT KELLER	38
UTILITY	NATE COLLINS	39
LEFT-HANDED PITCHER	BRODY STRAHAN	40
LEFT-HANDED PITCHER	JAMES BURCHETT	41
RIGHT-HANDED PITCHER	KEVIN ROLIARD	43
LEFT-HANDED PITCHER	ZACH HAYES	44
CATCHER	JACK GATES	45
LEFT-HANDED PITCHER	WILL DION	47

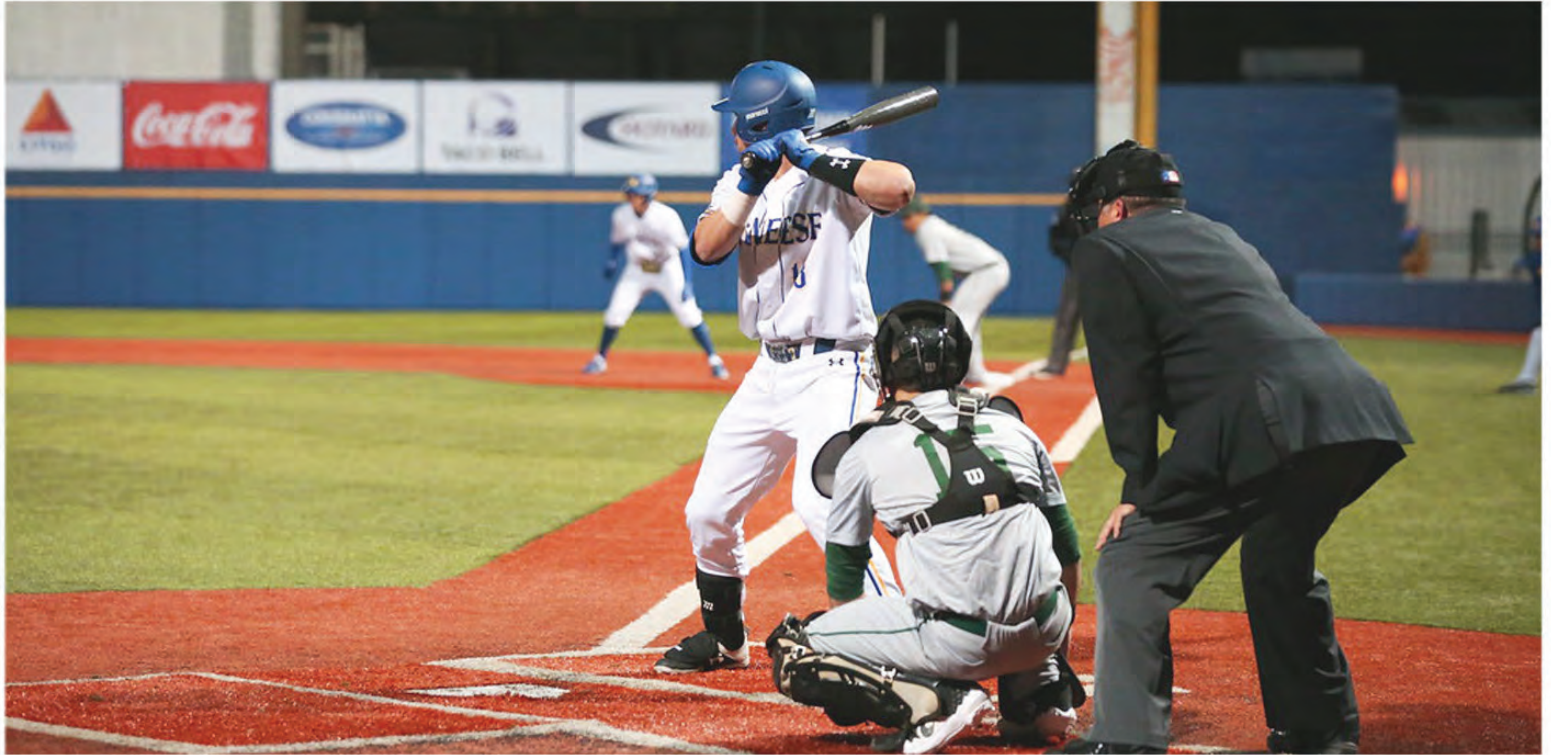
COACHES

HEAD COACH	JUSTIN HILL
ASSOCIATE HEAD COACH/PITCHING	NICK ZALESKI
ASSITANT COACH/RECRUITING	JIMMY RICKLEFSEN
VOLUNTEER ASSISTANT COACH	CASS HARGIS
DIRECTOR OF PLAYER DEVELOPMENT	PEYTON MCLEMORE

BASEBALL



BASEBALL



WOMEN'S TENNIS

DALIA AHMED	MARIJA MASTILOVIC
STELLA CARRA	CARLOTTA ROMITO
CHAROLINE ERLANDSSON	SOFIA SAN JOSE MORENO
GIOVANNA FIORETTI	CHARLOTTE ZIEGLER

COACHES

HEAD COACH	GIORGIA POZZAN
ASSISTANT COACH	ALEXANDRA STARKOVA
GRADUATE ASSISTANT AT (MEN'S BASKETBALL & TENNIS)	RYAN SMITH
ADMINISTRATIVE ASSISTANT	SANDI RODRIGUEZ
ACADEMIC COUNSELOR	ALEXANDRA HALEY

HANNA BLINOUSKAYA	MATILDE MULATERO
STELLA CARRA	CARLOTTA ROMITO
MARIJA MASTILOVIC	SOFIA SAN JOSE MORENO

COACHES

HEAD COACHES	GIORGIA POZZAN
ASSISTANT COACH	ZOE DOUGLAS
DIRECTOR OF OPERATIONS	MELANIE COYNE
DIRECTOR OF STUDENT ATHLETE SERVICES	ALEXANDRA HALEY

2019-2020





STUDENTS



STUDENTS

4.0
GPA



2019 SPRING HONOR GRADUATES

SUMMA CUM LAUDE PT.1



STUDENTS

SUMMA CUM LAUDE PT.2



2019 SPRING HONOR GRADUATES

MAGNA CUM LAUDE

Collin Brice Adams, Lake Charles; Afaf Suwayyid N. Alanazi, Alqurayyate, Saudi Arabia; Inez E. Ange, Lake Charles; Jaycey Ann Beard, Eagle, Colorado; Nicholas R. Bedwell, Killeen, Texas; Sara Blythe Bohannon, Sulphur; Lindsey A. Bower, Lake Charles; Jacob A. Bridges, Sulphur; Emily Ann Burleigh, Iowa; Sophie E. Campbell, Lake Charles; Canon Cart, Lake Charles; Cody A. Caswell, Lake Charles; Courtney P. Ceasar, Eunice; Gavin Zane Conley, Lake Charles; Ada G. Crochet, Westlake; Faren R. Daigle, Lake Charles; Hannah C. Dartez, Jennings; Madison A. David, Rayne; Alyssa Gabrielle Derouen, Sulphur; Emily Claire Dickerson, Lake Charles; Tea B. Dickerson, Lake Charles; Charoline Erlandsson, Stockholm, Sweden; Nanci Kaye Evans, DeQuincy; Avery Fliger, Baschor, Kansas; Morgan C. Foreman, Lake Charles; Shianne N. Fuslier, Lake Charles; Rebecca Mia Gill, Sulphur; Courtnee C. Green, Youngsville; Audrey L. Harris, Grand Lake; Madalyn E. Hebert, Lake Charles; Jessica Leigh Ramsey Ivey, Longville; Delaney Kaye Jackson, Roanoke; Reygan A. Jagneaux, Ville Platte; Aaron L. Johnson, Mamou; Jeffery Michael Knapick, Houston, Texas; Devyn A. Knippers, Sulphur; Tara Deneen LaBruyere, Longville; Celeste M. Lee, Sulphur; Jennifer E. Link, Lafayette; Brittany Nicole Long, Lumberton, Texas; Mia M. Manzanares, Opelousas; Janae R. Maricle, Leesville; Julianne Grace Marler, Lake Charles; Kaleb C. McDade, DeRidder; Grace Maria McKenzie, Cork, Ireland; Cody J. Miller, Lake Charles; Mallory E. Myers, Jennings; Monica Thao My Nguyen, Vinton; Nathanael Seth Nicholas, Lake Charles; Ashley N. Petry, Lake Charles; Austin J. Pottorff, Sulphur; Crosby Dylan Qui, Lake Charles; Ana Karen Reyes, Groves, Texas; Laura Marie Schmid, Crowley; Skylar M. Seaford, Sulphur; Darian N. Seago, Lake Charles; Thomas A. Spagnoli, Houston, Texas; Caleb A. Stanley, Lake Charles; Jacob C. Stark, Grant; Elizabeth N. Stretcher, Jennings; Sandra Lynn Theriot, Lake Charles; Shay M. Walker, Lacassine; and Kaitlin Denise Wheeler, Sulphur.

STUDENTS

CUM LAUDE PT. 1

Faisal Ibrahim Nasser Alqahtani, Riyadh, Saudi Arabia; Jordan B. Ashworth, Lake Charles; Kara Lauren Ashworth, Lake Charles; Madison B. Augustine, Fenton; Anne C. Breaux, Lake Charles; Lauren G. Breaux, Sulphur; Gabrielle K. Briscoe, Welsh; Bradley G. Bryant, Lake Charles; Brett J. Bullard, Lake Charles; Kelly Noel Caldarera, Lake Charles; Hannah A. Canter, Holmwood; Brentney A. Carroll, Slidell; Miranda G. Charles, Lake Charles; Maddison M. Cholley, Sulphur; Jacob G. Cochran, Lake Charles; Jordan Coe, Lake Charles; Michael Warren Cutrer, Sulphur; Rhett Deaton, Winnsboro, Texas; Haley Noelle Delaunais, Lake Charles; Kyle Brent Delino, Iowa; Taylor S. Duhon, Lake Arthur; Ty D. Ellender, Lake Charles; Erin E. Green, Thibodaux; Rosalie Clare Guinn, Jennings; Morgan F. Hardey, Westlake; Haley M. Harless, Lake Charles; Julia L. Hebert, Bell City; Emily Kathryn Hendricks, Welsh; Megan E. Holmes, Wildomar, California; Kevin T. Istre, Lake Charles; Caitlin E. Johnson, DeRidder;

2019 SPRING HONOR GRADUATES

CUM LAUDE PT.2

Prajwal Khatiwada, Hetauda, Nepal; Sarah Nicole Kidder, Orange, Texas; Michelle A. Klein, Lake Charles; Kennedy R. Kober, Iowa; James Eric Lasher, Lake Charles; Katie Nicole Lee, Groves, Texas; Mary E. Leonards, Basile; Collier Thomas Litel, Lake Charles; Shelby R. Matte, DeQuincy; Nicklas Mattner, Braunschweig, Germany; Emilee M. Mayes, Deer Park, Texas; Morgan P. Middleton, Frisco, Texas; Kaylee J. Moody, Sulphur; Brant A. Morton, Westlake; Savannah D. Moses, DeRidder; Emily Lorice Northcutt, Lake Charles; Huanrong Ouyang, Guangzhou, China; Meiyi Pan, Shenshen, China; Nola R. Prickett, Hemet, California; Latoshua Mabre Bergeron, Breaux Bridge; Muneeza Oureshi, Lake Charles; Brandi LeJeune Reed, Gueydan; Michael A. Reed, Lake Charles; Elliott L. Reeves, Dry Creek; Thaddeus D. Richard, Eunice; Steven Aaron Robinson, Katy, Texas; Toni N. Romero, Welsh; Rebecca T. Smith, Many; Christine M. Stephens, Sulphur; Veronica A. Stewart, Lake Charles; Shereen K. Taha, Lake Charles; Cody L. Thibodeaux, DeQuincy; Lorita A. Thomas, Lake Charles; Danielle Kay Thompson, Lake Charles; Jolie A. Trahan, Hackberry; Taylor M. Trahan, Lake Charles; Jordan Mark Warren, Vacherie; Lauren Bailey Woods, Sulphur; Lauren R. Wyble, Opelousas; Madie B. Young, Basile; and Heidi D. Zaunbrecher,

STUDENTS

2019 FALL HONOR GRADUATES



Rebecca Adcock



Taylor Beeson



Dipesh Bhandari



Hannah Brignac



Alexis Dickerson



Alyssa Foreman



Hannah Pettefer



Bishal KC



Anuja Thapa



Lindsey Thompson



Carlie Walton

STUDENTS



**MICHAEL
McFARLAIN**

Michael McFarlain, Sulphur, is the first McNeese student to be named state Student of the Year by LANP. This award is given to a student member for outstanding character, school performance, leadership and interpersonal skills.

McNEESE PEOPLE IN THE NEWS

LATONYA WOODS

Latonya Woods, Lafayette, received one of two inaugural scholarships from the LANP Foundation and is one of the first recipients from Southwest Louisiana to be accepted into the South Louisiana Area Health Education Center Scholars program, which is for health professions students interested in supplementing their education by gaining additional knowledge and experience in rural or underserved urban settings.





M

GREEKS & ORGANIZATIONS



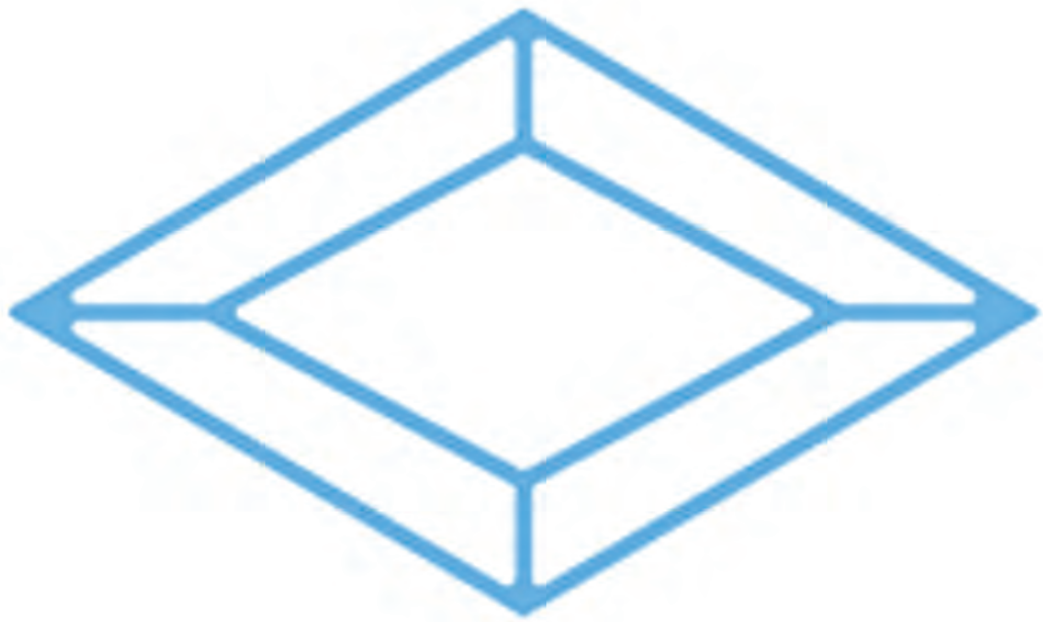
THE GREEKS

ALPHA DELTA PI

At Alpha Delta Pi, we are a sisterhood of friends, a family of individuals and a home away from home. We embrace every woman's uniqueness, we encourage and support each other's goals and dreams and we value character above all else. Founded in 1851 at Wesleyan Female College in Macon, Georgia, Alpha Delta Pi was the first secret society for women



ALPHA DELTA PI



ΑΔΠ

THE GREEKS

ALPHA KAPPA ALPHA

The purpose of Alpha Kappa Alpha Sorority Inc. is to cultivate and encourage high scholastic and ethical standards, to promote unity and friendship among college women, to study and help alleviate problems concerning girls and women in order to improve their social stature, to maintain a progressive interest in college life and to be of service to all mankind.

The Zeta Pi Chapter of Alpha Kappa Sorority Inc. has been setting the standard since 1972. We are a sisterhood that strives for success and continues to be of service to the McNeese State University campus and the Lake Charles community



ALPHA KAPPA ALPHA

AKA

1908

Zeta Pi

MC NEESE STATE UNIVERSITY
1972

THE GREEKS

CHI OMEGA

Founded in 1895 at the University of Arkansas, Chi Omega is the largest women's fraternal organization in the world with over 390,000 initiates, 181 collegiate chapters and over 240 alumnae chapters. Throughout Chi Omega's long and proud history, the fraternity has brought its members unequalled opportunities for personal growth and development



CHI OMEGA

CHI OMEGA

FRATERNITY

XΩ

Phi Zeta

MCNEESE STATE UNIVERSITY

THE GREEKS

PHI MU

Founded in 1852, Phi Mu is a women's organization which provides personal and academic development, service to others, commitment to excellence and lifelong friendship through a shared tradition. Phi Mu promotes vibrant living, encouraging members to achieve their personal best.



PHI MU



PhiMu

F R A T E R N I T Y

THE GREEKS

SIGMA GAMMA RHO

Sigma Gamma Rho Sorority Inc. was organized on November 12, 1922, in Indianapolis, Indiana, by seven young educators: Mary Lou Allison Gardner Little, Dorothy Hanley Whiteside, Vivian White Marbury, Nannie Mae Gahn Johnson, Hattie Mae Annette Dulin Redford, Bessie Mae Downey Rhoades Martin and Cubena McClure. The group became an incorporated national collegiate sorority on December 30, 1929, when a charter was granted to Alpha chapter at Butler University.



SIGMA GAMMA RHO



THE GREEKS

ZETA PHI BETA

Zeta Phi Beta Sorority Inc., was founded in 1920 on the belief that the social nature of sorority life should not overshadow the real mission for progressive organizations to address societal mores, ills, prejudices, poverty and health concerns of the day. The international organization's 125,000+ initiated members, operating in more than 850 chapters, have given millions of voluntary hours, provided scholarships, supported organized charities and promoted legislation for social and civic change.



ZETA PHI BETA



THE GREEKS

DELTA SIGMA PI

Delta Sigma Pi is a professional fraternity organized to foster the study of business in universities; to encourage scholarship, social activity and the association of students for their mutual advancement by research and practice; to promote closer affiliation between the commercial world and students of commerce; and to further a higher standard of commercial ethics and culture and the civic and commercial welfare of the community.



DELTA SIGMA PI



THE GREEKS

KAPPA ALPHA ORDER

Kappa Alpha Order seeks to be the moral compass for the modern gentlemen. The six values we strive for are reverence, gentility, knowledge, leadership, *brotherhood and excellence*. From being a gentleman, to aiming for excellence, our values are rooted in our ritual and initiation.



KAPPA ALPHA ORDER



THE GREEKS

KAPPA SIGMA

The Theta Rho chapter of Kappa Sigma was chartered on December 9, 1966, and is the oldest and largest fraternity campus. Our chapter is one of the top Kappa Sigma chapters in the country, being nominated for and winning numerous national awards.



KAPPA SIGMA



MCNEESE STATE UNIVERSITY

THE GREEKS

ALPHA PHI ALPHA

Alpha Phi Alpha Fraternity Inc. develops leaders, promotes brotherhood and academic excellence, while providing service and advocacy for our communities.



ALPHA PHI ALPHA



THE GREEKS

KAPPA ALPHA PSI

Kappa Alpha Psi is the second oldest existing collegiate historically Black Greek Letter Fraternity and the first intercollegiate fraternity incorporated as a national body. The fraternity has over 125,000 members with 700 undergraduate and alumni chapters in nearly every state of the United States and international chapters in Nigeria, South Africa, the West Indies, the United Kingdom, Germany, Korea and Japan



KAPPA ALPHA PSI

KAPΣ

1911

EPHINUPES

EST 1969

THE GREEKS

OMEGA PSI PHI

Omega Psi Phi Fraternity Inc. is the first international fraternal organization founded on the campus of a historically black college on November 17, 1911, at Howard University in Washington, D.C. From the initials of the Greek phrase meaning, "*friendship is essential to the soul*," the name Omega Psi Phi was derived.



OMEGA PSI PHI



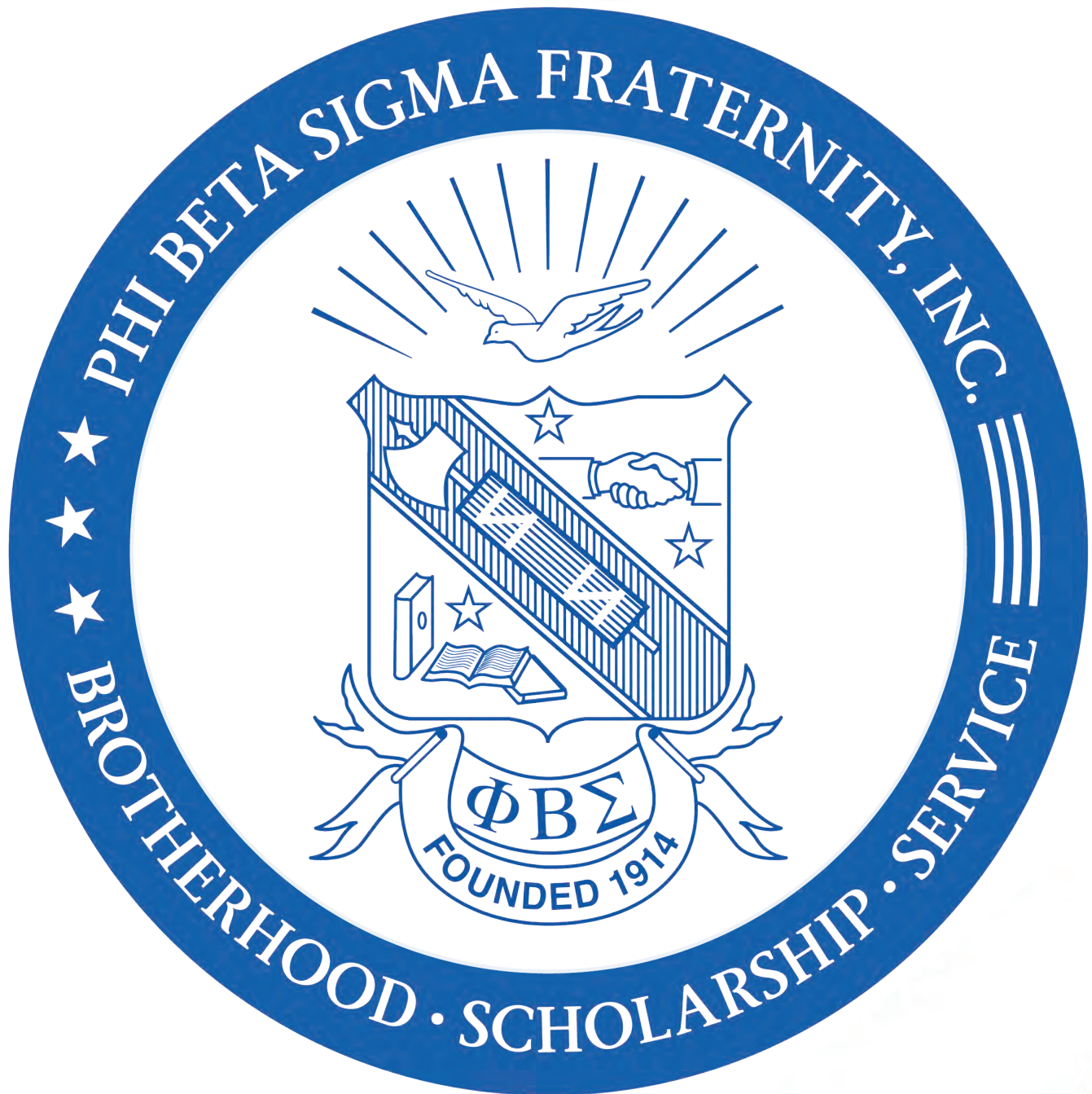
THE GREEKS

PHI BETA SIGMA

Founded on the McNeese campus in 1982, Xi Eta chapter of Phi Beta Sigma promotes brotherhood, scholarship and service. Our motto is Culture for Service and Service for Humanity



PHI BETA SIGMA



THE GREEKS

PI KAPPA ALPHA

Pi Kappa Alpha or "Pike" is a brotherhood of scholars, leaders, athletes and gentlemen. We set the standard for integrity, intellect and achievement. Pike has been ranked #1 on campus in GPA and intramurals since our chapter's founding in 2010. Many of our brothers serve in campus leadership positions. Rushing Pike is a commitment to becoming a part of the "most best men" on campus.



PI KAPPA ALPHA

ΠΙΚΑ

PIKE

**McNEESE STATE
UNIVERSITY**

THE GREEKS

PI KAPPA PHI

We refounded McNeese State University's first fraternity. We will build a group of men that choose to redefine the fraternity stereotype. We are looking for men who exemplify our ideals of CLASS: character, leadership, achievement, scholarship and service. We are a very diverse group of men, so come hang out and see where you fit in with us.



PI KAPPA PHI



McNEESE
STATE

ORGANIZATIONS

AFRICAN AND CARIBBEAN STUDENT ASSOCIATION

Our goal is to promote friendship and togetherness among African and Caribbean students on campus and share our culture with the greater McNeese population.



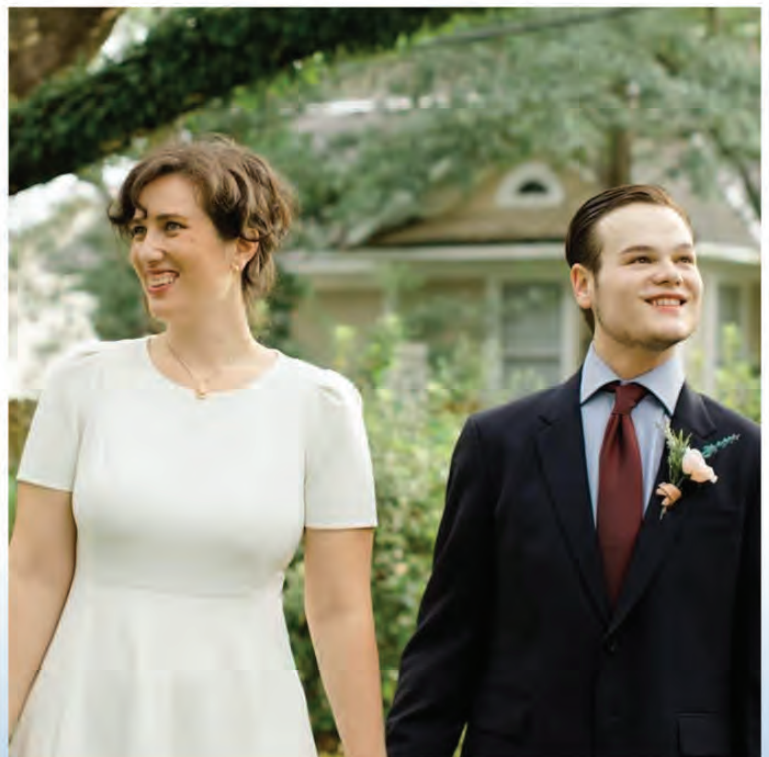
AFRICAN AND CARIBBEAN STUDENT ASSOCIATION



ORGANIZATIONS

ALPHA PSI OMEGA

Alpha Psi Omega is a National Theatre Honor Society for participants in collegiate theatre. It began in the early 20th century as a result of the growing interest in dramatic arts among colleges and universities throughout America, with the aim of encouraging dramatic production at every step in a person's academic career.



ALPHA PSI OMEGA

AΨΩ Alpha Psi
Omega

National Theatre Honor Society

ORGANIZATIONS

AMERICAN CHEMICAL SOCIETY

The McNeese State University student chapter of the American Chemical Society is an organization that aims to foster the academic and career growth of McNeese students through the development of greater chemical understanding.



AMERICAN CHEMICAL SOCIETY



ORGANIZATIONS

ASSOCIATED PROFESSIONAL EDUCATORS OF LOUISIANA

Associated Professional Educators of Louisiana (A+PEL) is the premier educators' organization in Louisiana, advancing A+teachers as career professionals. By focusing on professional development, teacher advocacy and excellence in education, we empower Louisiana's youth for future success.



ASSOCIATED PROFESSIONAL EDUCATORS OF LOUISIANA

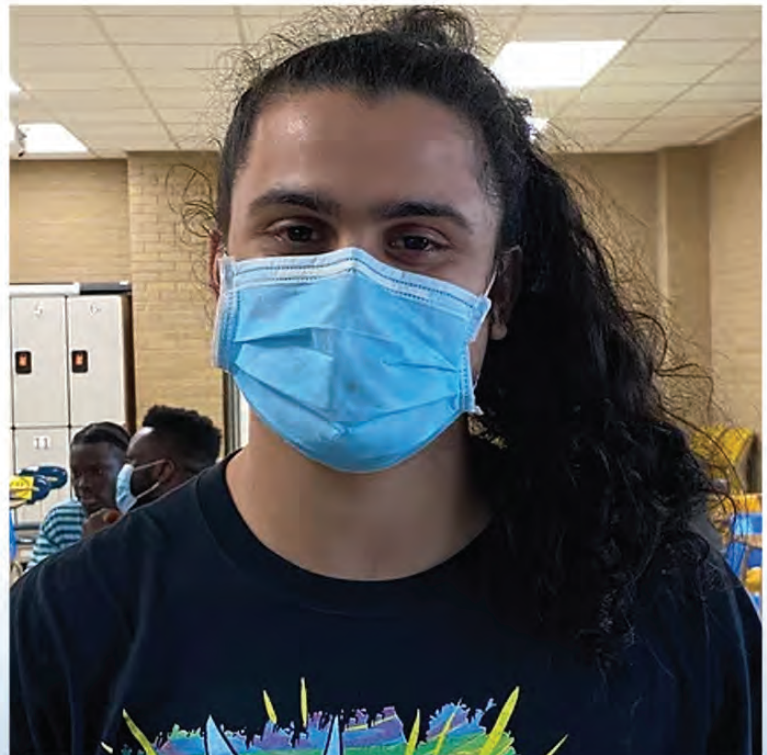


*Associated Professional
Educators of Louisiana*

ORGANIZATIONS

AMERICAN SOCIETY OF MECHANICAL ENGINEERS

ASME helps McNeese engineering students develop their professional identity and provides essential engagement opportunities through a wide range of activities and resources such as competitions, scholarships, leadership opportunities and internships as well as networking within the Society.



AMERICAN SOCIETY OF MECHANICAL ENGINEERS



MCNEESE STATE UNIVERSITY

ASME

AMERICAN SOCIETY of MECHANICAL ENGINEERS

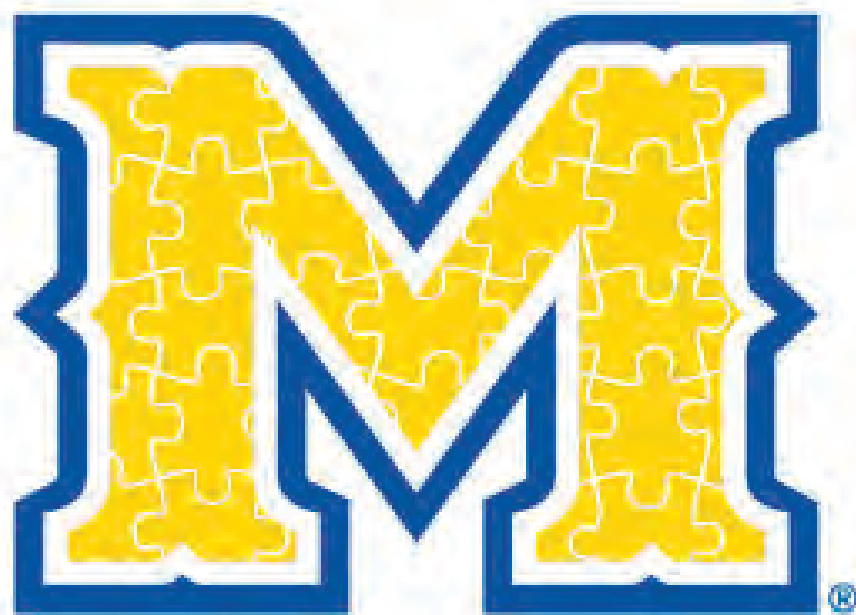
ORGANIZATIONS

AUTISM SOCIETY OF McNEESE

ASM is committed to helping individuals with autism spectrum disorder (ASD) integrate and excel within the university environment by providing social support and advocacy. ASM also provides opportunities for students with ASD to gather socially and discuss issues relevant to their academic experiences, which increases the likelihood of successful, enjoyable, social and academic experiences at McNeese State University.



AUTISM SOCIETY OF McNEESE



MCNEESE
—*—
AUTISM PROGRAM

ORGANIZATIONS

BAPTIST COLLEGIATE MINISTRY

The BCM is a student organization that exists to connect college age people to Christ and to His body, to help McNeese students take their next step in their faith journey and allow McNeese students to be the Hands and Feet of Jesus.



BAPTIST COLLEGIATE MINISTRY



ORGANIZATIONS

BE THE MATCH ON CAMPUS

Every three minutes, one person is diagnosed with a blood cancer. Every 10 minutes, someone dies from a blood cancer. That's more than six people each hour or 148 people each day. Patients are searching for a cure. It could be you. This organization helps bring awareness to the community and helps bridge the gaps for donor matches.



BE THE MATCH ON CAMPUS

BE  THE MATCH[®]
ONCAMPUS

ORGANIZATIONS

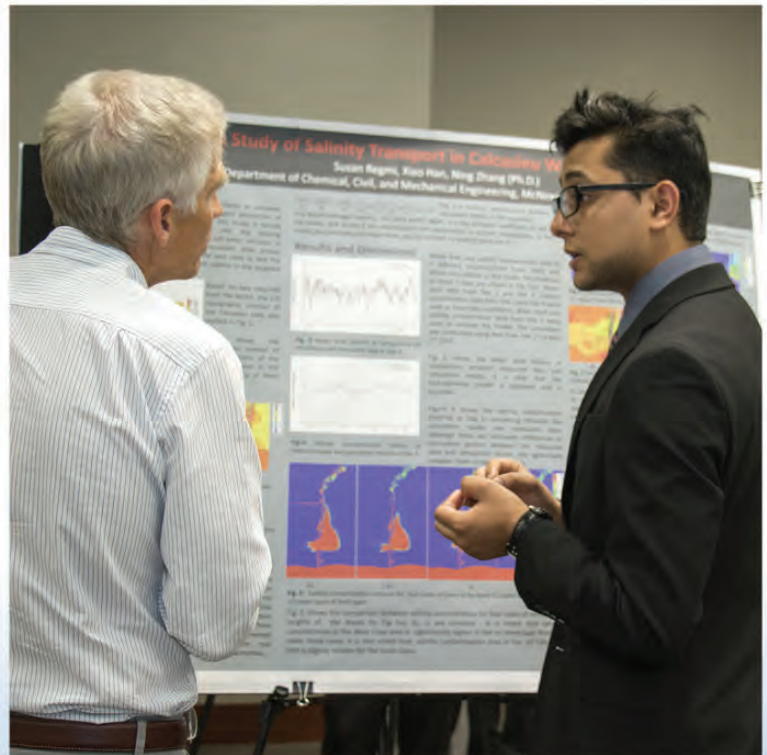
C.A.R.E. MENTORSHIP PROGRAM

C (onnect) - Students will be connected to resources and opportunities the university offers.

A (ccelerate) - Students will accelerate progression toward completing a degree plan.

R (etain) - Students will be retained due to the connections they build.

E (ngage) - Students will be engaged to the campus and student life.



C.A.R.E. MENTORSHIP PROGRAM



MENTORSHIP PROGRAM

ORGANIZATIONS

CHI ALPHA CAMPUS MINISTRY

We are a Spirit-empowered, diverse

community of believers at McNeese State University, declaring in word and lifestyle our faith in Jesus Christ, equipped to fulfill our purpose in God's global plan. For many years, Chi Alpha has had a presence on campus. Chi Alpha, which comes from Christou Apostoloi - Greek for Christ's Ambassadors in 2 Corinthians 5:20, is found on over 300 campuses throughout the nation. At McNeese Chi Alpha is connecting with students at XA Live and meeting together in lifegroups across campus.



CHI ALPHA CAMPUS MINISTRY



CHI ALPHA CAMPUS MINISTRIES
AT MCNEESE STATE UNIVERSITY

ORGANIZATIONS

CIRCLE K INTERNATIONAL

Circle K International is the world's largest student-led collegiate service organization, with thousands of members on hundreds of campuses on five continents across the globe. The collegiate branch of the Kiwanis International family, CKI is committed to developing leaders by offering unique service, leadership and fellowship opportunities that not only change the world but also change members' lives.



CIRCLE K INTERNATIONAL



ORGANIZATIONS

COLLEGE PANHELLENIC ASSOCIATION

The McNeese Panhellenic Association serves as the governing body of the National Panhellenic Conference sororities on the McNeese State University campus. The mission of the McNeese Panhellenic Association is simply to unite the National Panhellenic Conference sororities by promoting Greek life, scholarship, philanthropy, leadership and campus involvement amongst its sorority members.



COLLEGE PANHELLENIC ASSOCIATION



ORGANIZATIONS

COLLEGIATE ENTREPRENEURSHIP ORGANIZATION

Entrepreneurship as a field of study at colleges and universities across the U.S. and around the world has become a leading subject at the undergraduate and graduate level. According to the 2011 Global Entrepreneurship Monitor U.S. Report, younger adults (ages 18-24) are more likely to start a business and college graduates or those pursuing higher education are particularly more inclined to pursue entrepreneurship.



COLLEGIATE ENTREPRENEURSHIP ORGANIZATION



The Collegiate Entrepreneurs' Organization
CREATING A WORLD OF OPPORTUNITIES

ORGANIZATIONS

COLLEGIATE FFA

FFA is an intracurricular student organization for those interested in agriculture and leadership. The dynamic youth organization changes lives and prepares members for premier leadership, personal growth and career success through agricultural education.



COLLEGIATE FFA



ORGANIZATIONS

COWBOYS FOR CHRIST

Cowboy Catholics is a ministry of the McNeese Newman Club and Our Lady of Good Counsel Catholic Church. Evangelizing through Excellence captures our mission to bring the Gospel of Jesus Christ to the McNeese community. The Cowboy Catholic Student Center seeks to provide a home for students and a place of spiritual and intellectual formation.



COWBOYS FOR CHRIST



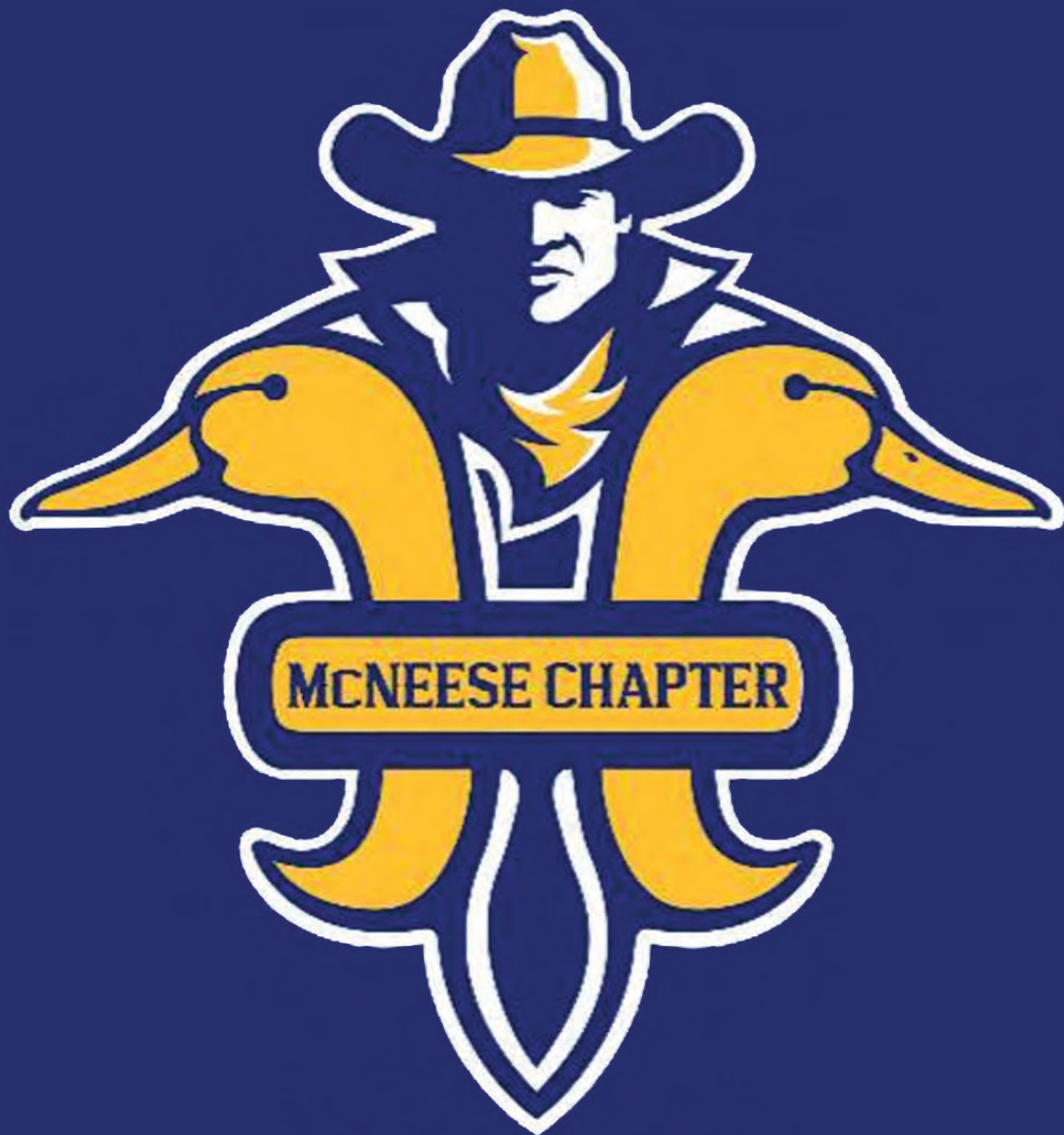
ORGANIZATIONS

DUCKS UNLIMITED CHAPTER OF McNEESE

McNeese Ducks Unlimited is a conservation organization. We have two events throughout the year, one in the spring and one in the fall. All profits made at these events is given back to Ducks Unlimited headquarters to help restore the wetlands habitat and secure a home for all ducks. We are one of the smaller organizations on campus and we are always welcoming new members to our DU family!



DUCKS UNLIMITED CHAPTER OF McNEESE



DUCKS
UNLIMITED

ORGANIZATIONS

HIGHER LEVEL GOSPEL CHOIR

The Higher Level Gospel Choir was created in 2003 to inspire students and the community to become involved in community service, to excel in academic scholarship and to embrace various cultures through music



HIGHER LEVEL GOSPEL CHOIR

HIGHER LEVEL



GOSPEL CHOIR

MCNEESE STATE
UNIVERSITY

ORGANIZATIONS

HUNT SEAT TEAM AT McNEESE STATE UNIVERSITY

The purpose of the Hunt Seat Team at McNeese State University is to facilitate the opportunity for students to ride and enjoy a Hunter horse in a team setting where emphasis will be placed on skill, growth, horsemanship, equitation and sportsmanship. It is a club that accepts beginners to advanced riders and the opportunity to compete in IHSA/USHJA regulated events is available.



HUNT SEAT TEAM AT McNEESE STATE UNIVERSITY

HUNT SEAT TEAM



at MCNEESE

ORGANIZATIONS

INTERFRATERNITY COUNCIL

The Interfraternity Council serves as the unifying force for all IFC fraternities and works to promote Greek life at McNeese. Each fraternity has two IFC representatives and every fraternity member is held accountable to the core Greek values of academics, service and brotherhood.



INTERFRATERNITY COUNCIL



ORGANIZATIONS



INTERNATIONAL STUDENT ASSOCIATION



ORGANIZATIONS

KAPPA LAMBDA

Kappa Lambda is an organization dedicated to developing students into exemplary citizens through service to the community.



KAPPA LAMBDA



ORGANIZATIONS

McNEESE ASCE STUDENT CHAPTER

The McNeese American Society of Civil Engineers

student chapter was chartered in 1982. Our chapter provides students with an excellent opportunity to develop the leadership and organizational abilities that they use throughout their careers and seeks to provide a training ground for the future leadership of ASCE and the profession. McNeese ASCE has a proud history of active participation in conference and national competition, professional events and community service.



McNEESE AMERICAN SOCIETY OF CIVIL ENGINEERS



STUDENT CHAPTER
McNeese State University

ORGANIZATIONS

McNEESE BAND

As the most visible McNeese ensemble, the marching band performs for over 100,000 people each fall. “The Pride” continually combines fantastic spirit and quality musicianship for every performance opportunity. Members enjoy a wide range of experiences, including fast-paced rehearsals, close friendships, travel to away games, fun and excitement in the stands and a high standard of performance on the field.



McNEESE BAND



ORGANIZATIONS

McNEESE INTRAMURALS

Intramural sports are a fun, competitive way for students to relieve stress, stay healthy and get involved on campus. No matter your experience level or athleticism, there's a game for you.

McNeese offers individual and team sports such as volleyball, flag football, basketball, softball, table tennis and more.



McNEESE INTRAMURALS



ORGANIZATIONS

McNEESE STATE UNIVERSITY COWGIRL KICKERS

Founded in 1980, the Cowgirl Kickers are the official dance team at McNeese, performing for Cowboy fans at football and basketball games, as well as performances at Walt Disney World, Dallas Mavericks, Houston Rockets and New Orleans Saints' games, a U.S. naval base at Pearl Harbor and London's New Year's Day Parade.



McNEESE STATE UNIVERSITY

COWGIRL KICKERS



ORGANIZATIONS

McNEESE'S CHAPTER OF THE ASSOCIATION OF COMPUTING MACHINERY

For over 70 years, ACM has helped computing professionals be their most creative, connect to peers and see what's next. Joining ACM means you dare to be the best professional you can be. McNeese students participate in competitions and have access to a large number of publications, as well as the ACM digital library. Be creative. Stay connected. Keep inventing.



McNEESE'S CHAPTER OF THE ASSOCIATION OF COMPUTING MACHINERY



ORGANIZATIONS

NATIONAL ALLIANCE ON MENTAL ILLNESS ON CAMPUS AT McNEESE STATE UNIVERSITY

NAMI on Campus is an exciting extension of NAMI's mission into the campus community. NAMI on Campus clubs are student-led clubs that tackle mental health issues on campus by raising mental health awareness, educating the campus community, supporting students, promoting services and supports and advocating. NAMI on Campus clubs aim to address the mental health needs of all students so they have positive, successful and fun college experiences.

NATIONAL ALLIANCE ON MENTAL ILLNESS ON CAMPUS AT McNEESE STATE UNIVERSITY



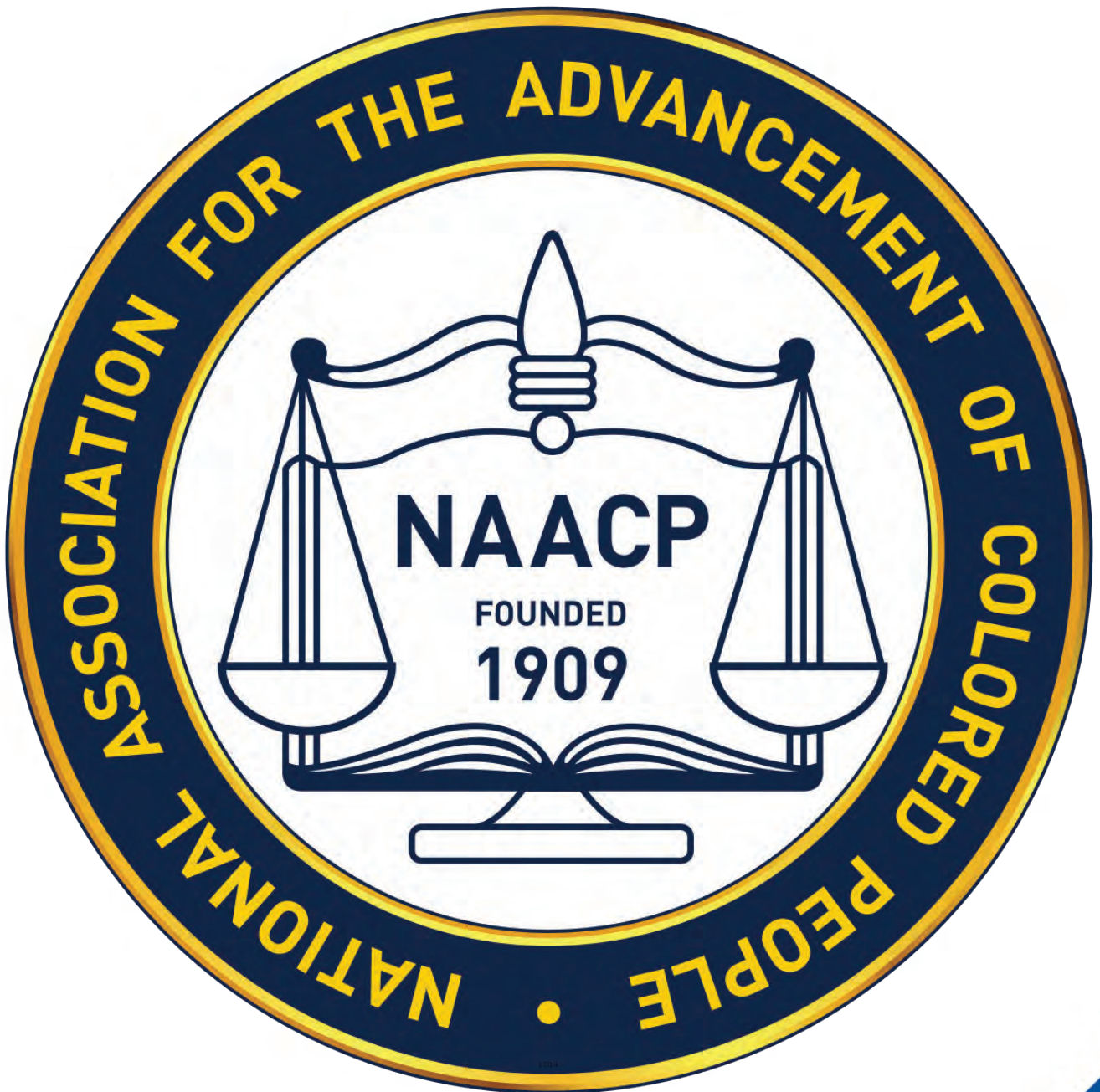
ORGANIZATIONS

NATIONAL ASSOCIATION FOR THE ADVANCEMENT OF COLORED PEOPLE

The mission of the NAACP Youth & College Division is to inform youth of the problems affecting African Americans and other racial and ethnic minorities and to advance the economic, education, social and political status.



NATIONAL ASSOCIATION FOR THE ADVANCEMENT OF COLORED PEOPLE



ORGANIZATIONS

NATIONAL PAN-HELLENIC COUNCIL

The National Pan-Hellenic Council was founded in 1930 to serve as a governing body to the nine nationally recognized historically Black fraternities and sororities. Its purpose is to foster cooperative actions of its members in dealing with matters of mutual concern. To this end, the NPHC promotes the well-being of its affiliate fraternities and sororities, facilitates the establishment and development of local councils of the NPHC and provides leadership training for its constituents.



NATIONAL PAN-HELLENIC COUNCIL



ORGANIZATIONS

NATIONAL SOCIETY OF BLACK ENGINEERS

With more than 500 chapters and nearly 16,000 active members in the U.S. and abroad, the National Society of Black Engineers (NSBE) is one of the largest student-governed organizations based in the United States. NSBE, founded in 1975, supports and promotes the aspirations of collegiate and pre-collegiate students and technical professionals in engineering and technology. NSBE's mission is "to increase the number of culturally responsible Black engineers who excel academically, succeed professionally and positively impact the community."



NATIONAL SOCIETY OF BLACK ENGINEERS



ORGANIZATIONS

NATIONAL SOCIETY OF LEADERSHIP AND SUCCESS

The National Society of Leadership and Success is the nation's largest leadership honor society, with a current number of 912,947 members nationwide and 649 chapters. Inducted members receive their leadership certificate and take their place among the top student leaders at their campus and across the country.

NATIONAL SOCIETY OF LEADERSHIP AND SUCCESS



ORGANIZATIONS

NEPALESE STUDENT ASSOCIATION AT McNEESE

Nepalese Student Association (NSA) is focused on spreading awareness of Nepalese culture and traditions and promoting cultural exchange among all other organizations within the McNeese community. The NSA also tries to create a home-away-from home environment for first-time Nepalese students by ensuring a smooth transition with educational, social and cultural issues.



NEPALESE STUDENT ASSOCIATION AT McNEESE



Nepalese Student Association at McNeese

ORGANIZATIONS

PHYSICAL MEDICINE SOCIETY

The Physical Medicine Society at McNeese

helps inform students about the different careers that are available to those pursuing a degree in physical medicine. Our Society has guest speakers who talk about their careers and give us insight and a chance to make connections. The Society also believes community service is important and our group contributes its time to the community and charity events. The organization is open to all classifications.



PHYSICAL MEDICINE SOCIETY



ORGANIZATIONS



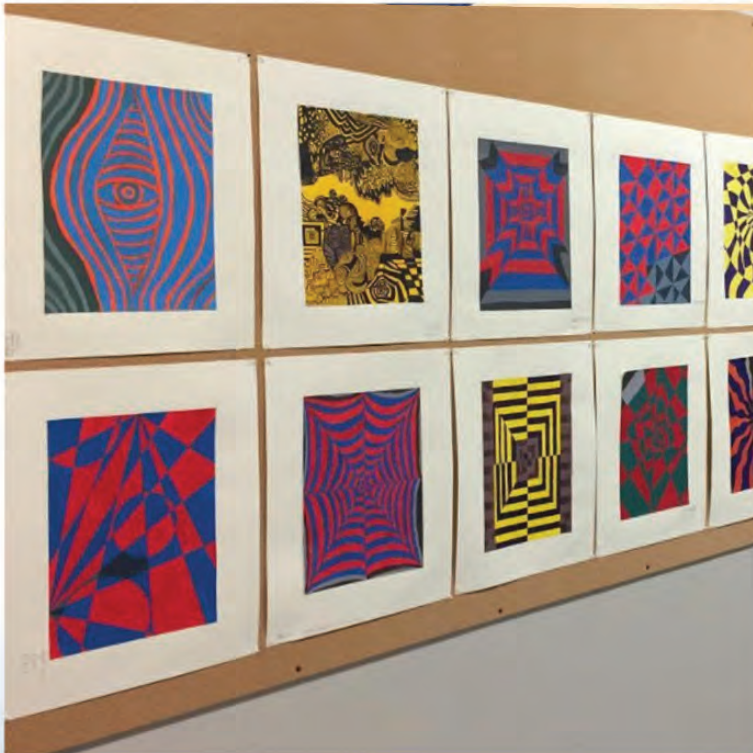
POWERLIFTING AT McNEESE



ORGANIZATIONS

STUDENT ART ASSOCIATION

The Student Art Association engages students with the community and abroad in art related events and activities. These activities range from Student Juried Exhibitions, participation in Art Walk and Gallery Promenade, annual bus trips to museums, art happenings, participation in local festivals and much more. Through the SAA, students are able to network with local artists and alumni to advance their educational careers.



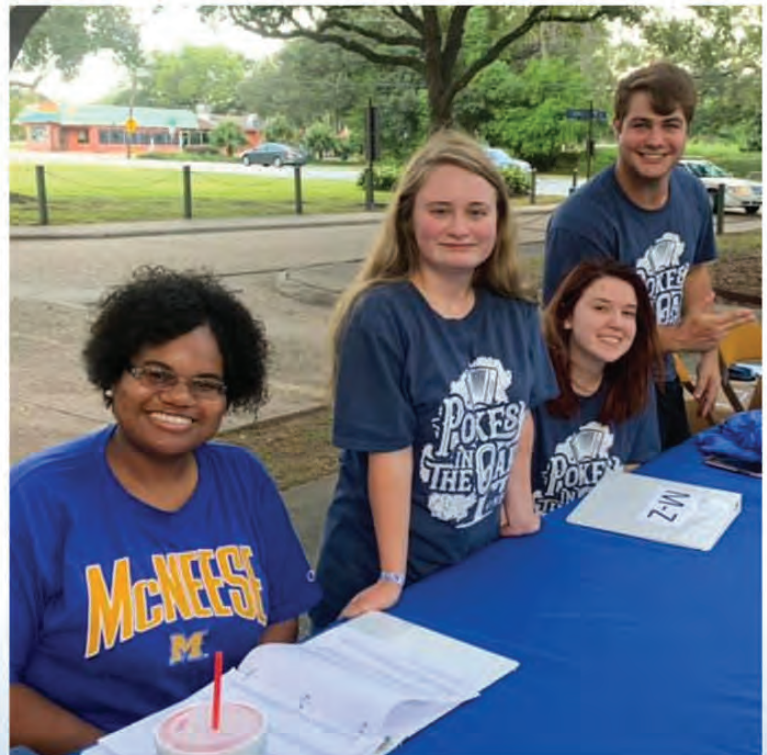
STUDENT ART ASSOCIATION



ORGANIZATIONS

STUDENT GOVERNMENT ASSOCIATION

The Student Government Association is the voice of the student body and is a liaison between students, faculty, staff and administration of the university. The SGA initiates advocacy programs, informs student organizations of the aims, policies and ideals of the university that pertain to or affect enrolled students.



STUDENT GOVERNMENT ASSOCIATION



MCNEESE STATE UNIVERSITY
STUDENT GOVERNMENT ASSOCIATION

ORGANIZATIONS

STUDENT LIFE COALITION STAFF

The Student Life Coalition (SLC) contributes to the social, recreational, cultural and educational development of students, faculty and alumni through an array of programs and services. SLC is the key to involvement on campus! Attend free events, volunteer and truly enjoy your time as a McNeese Cowboy!



STUDENT LIFE COALITION



**STUDENT LIFE
COALITION**

ORGANIZATIONS

STUDENT NURSES ASSOCIATION AT McNEESE

The SNA provides nursing students with opportunities to develop as leaders and as professionals through school involvement, community service and health promotion.



STUDENT NURSES ASSOCIATION AT MCNEESE



ORGANIZATIONS

SOCIETY OF WOMEN ENGINEERS

The Society of Women Engineers (SWE) is a woman-led national organization set to empower and give a voice to the women in the field of engineering. At McNeese, SWE is centered around a passion for its members' success and continues to evolve with the challenges and opportunities reflected in today's exciting engineering and technology specialties.

SOCIETY OF WOMEN ENGINEERS



Society of Women Engineers

Aspire / Advance / Achieve

ORGANIZATIONS

WESLEY FOUNDATION

The Wesley Foundation is a United Methodist Campus Ministry, open to all students looking for a place to belong. We are a collection of imperfect people from all walks of life striving to love God with all that we are and love others unconditionally!



WESLEY FOUNDATION

THE
WESLEY
LEY



GEAUX





POKES



