



**McNeese State University**

**Fact Book  
2008-2009**





**McNeese State University**  
4205 Ryan Street  
Lake Charles, LA 70609

**Fact Book 2008 - 2009**

**Table of Contents**

<b>History.....</b>	<b>1</b>
<b>Mission Statement.....</b>	<b>2</b>
<b>Institutional Goals.....</b>	<b>3</b>
<b>Organizational Chart.....</b>	<b>4</b>
<b>Accreditation .....</b>	<b>5</b>
<b>Inventory of Degree Programs .....</b>	<b>6</b>
<b>Enrollment .....</b>	<b>9</b>
<b>Historical Enrollment Data Since 1939.....</b>	<b>29</b>
<b>First-Time Freshmen .....</b>	<b>31</b>
<b>Transfers.....</b>	<b>41</b>
<b>Degrees Conferred .....</b>	<b>47</b>
<b>Student Credit Hours (SCH).....</b>	<b>52</b>
<b>Financial Aid .....</b>	<b>54</b>
<b>Full-Time Average Annual Fees .....</b>	<b>54</b>
<b>Revenues .....</b>	<b>55</b>
<b>Expenditures.....</b>	<b>55</b>
<b>Faculty/Staff .....</b>	<b>56</b>
<b>Facilities .....</b>	<b>58</b>



## History

The Louisiana Legislature founded McNeese State University, then known as the Lake Charles Junior College, as a division of Louisiana State University with the opening session of the college beginning on September 11, 1939. The following fall, the school changed its name to John McNeese Junior College to honor John McNeese, a renowned Southwest Louisiana educator and the first superintendent of schools in Imperial Calcasieu Parish. In 1950, McNeese became a four-year college in its own right and came under the authority of the Louisiana Board of Education. Finally, in 1970, McNeese State University became the official name of the school.

McNeese achieved Commission on Colleges/Southern Association of Colleges and Schools accreditation in 1954 and maintains its regional accreditation status as a Level IV institution authorized to award associate, bachelor, master, and specialist degrees. The University also provides opportunities for continuing education in support of its mission to value lifelong learning. As a member of the University of Louisiana System and a selective admissions institution, McNeese offers degrees through the department of general and basic studies and six academic colleges: Business, Education, Engineering and Engineering Technology, Liberal Arts, Nursing, and Science. McNeese's student body is comprised of students from throughout Louisiana, the United States, and approximately 50 countries. McNeese's athletic programs are NCAA-certified for competition at I-AA and I-A levels.

The McNeese State University campus in Lake Charles, Louisiana, features 68 buildings on 500 acres dotted with live oak trees and azalea bushes. The McNeese community continues to use the university's three original structures — Kaufman Hall, Ralph O. Ward Memorial Gym (the Arena), and Francis G. Bulber Auditorium. Bulber Auditorium, a striking example of Art Deco architecture, is listed on the National Register of Historic Places.

McNeese State University upholds a long tradition of service to the Southwest Louisiana community and the nation. The University motto of "Excellence with a Personal Touch" extends beyond the classroom to offering help to others in times of need. During World War II, the campus was the headquarters of the Louisiana Maneuvers, an extensive military exercise to prepare American soldiers for battle. In 1957, the McNeese community gave aid and comfort to the victims of Hurricane Audrey and served as the National Guard's base of rescue operations. Recently, McNeese provided shelter for New Orleans residents and university students fleeing from Hurricane Katrina. McNeese faced one of its greatest challenges when Hurricane Rita struck in the fall of 2005. The storm caused devastating damage to campus facilities and infrastructure. The recovery effort after Hurricane Rita demonstrated the resilience and commitment of the McNeese faculty, staff, and students to higher education and to moving forward in support of the core values of academic excellence, student success, fiscal responsibility, and university/community alliances.

## **Mission Statement**

McNeese State University, a selective admissions institution, provides education, research, and service that support our core values of academic excellence, student success, fiscal responsibility, and university-community alliances. The University's fundamental educational mission is to offer associate, baccalaureate, and specific graduate curricula distinguished by academic excellence. The University engages in collaborative ventures to benefit industry and to enhance economic development and cultural growth in this region and beyond.

The foundation for student success begins with faculty commitment to excellence in teaching, research, and creative and scholarly activity. At McNeese State University, a member of the University of Louisiana System, students cultivate skills for critical thinking and effective expression and gain an understanding of the global community. The learning and social environment integrates discipline-specific knowledge with the values of lifelong learning, ethical responsibility, and civic engagement.

*Adopted by McNeese State University - 2/21/05*

*Approved by the Board of Supervisors of the University of Louisiana System - 4/29/05*

# **Institutional Goals**

*Adopted 6/29/05*

*Revised 8/11/05*

## **Academic Excellence**

1. Emphasize excellence in instruction.
2. Develop programs that are viable, innovative, and relevant to market needs.
3. Infuse a global outlook and ethical standards in course content and curriculum development.
4. Uphold the commitment to regional and national program accreditation.
5. Encourage undergraduate and graduate research in appropriate disciplines.

## **Student Success**

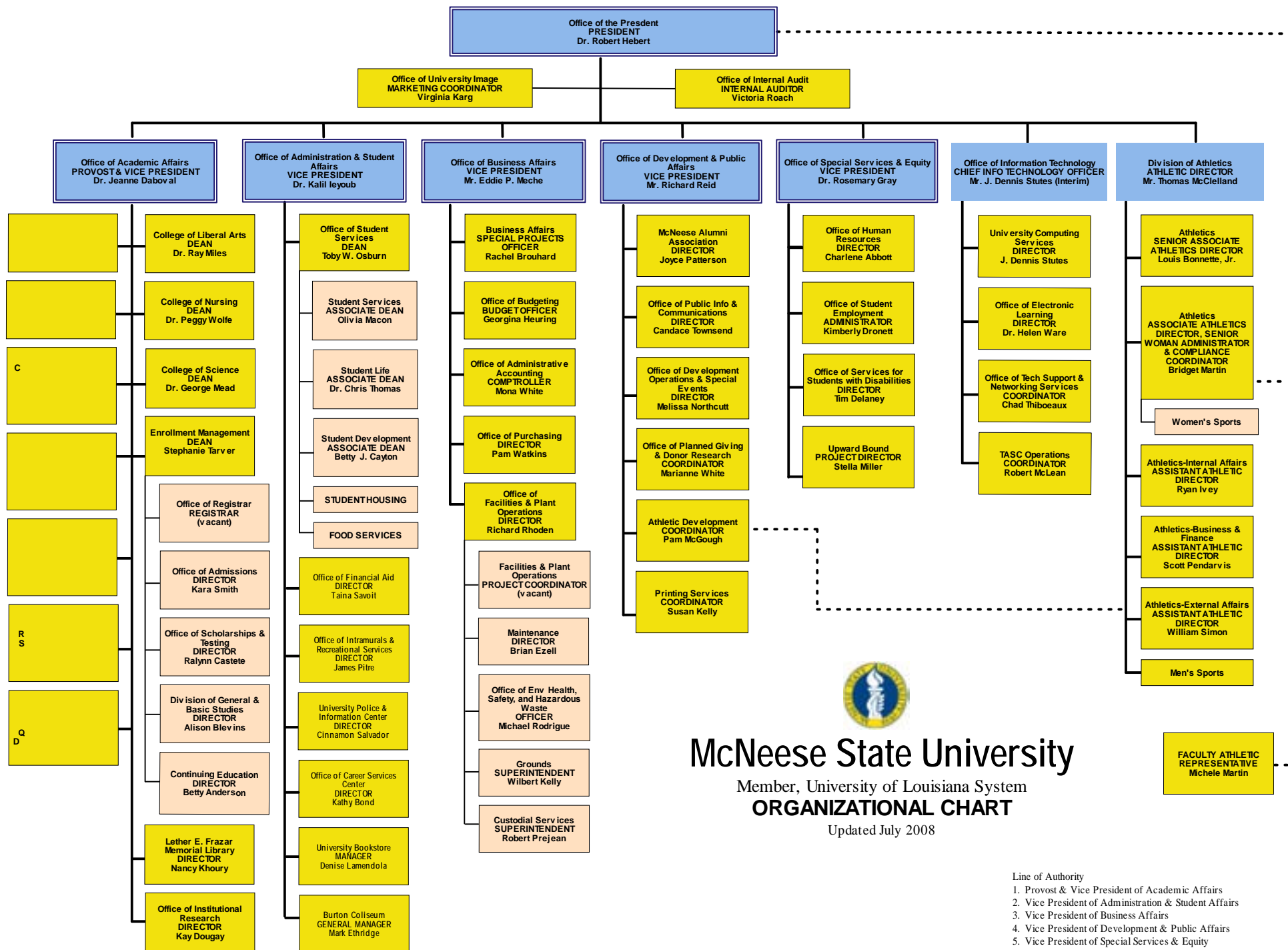
1. Foster a climate that enhances student learning, focuses on retention, values advising, and enriches the quality of campus-life.
2. Nurture an environment to support cultural diversity.
3. Present students opportunities for leadership.
4. Provide venues for learning to attract non-traditional students.
5. Provide an aesthetically-pleasing campus, functional facilities, and state-of-the-art equipment.

## **Fiscal Responsibility**

1. Engage in continuous assessment, evaluation, and improvement.
2. Utilize the role of technology to increase the efficiency and effectiveness of campus operations.
3. Garner outside funding sources to support the University mission.
4. Capitalize of efficient use of resources.
5. Support efforts to obtain federal funding.

## **University-Community Alliances**

1. Support mutually beneficial university/community collaborations.
2. Strengthen economic development through partnerships that provide technical assistance and information transfer to business and industry.
3. Enhance artistic, humanistic, and cultural opportunities in the area.
4. Retain certification and maintain competition in NCAA athletic programs
5. Partner with educational agencies to improve the quality of life in our region.



# McNeese State University

Member, University of Louisiana System

## ORGANIZATIONAL CHART

Updated July 2008

### Line of Authority

1. Provost & Vice President of Academic Affairs
2. Vice President of Administration & Student Affairs
3. Vice President of Business Affairs
4. Vice President of Development & Public Affairs
5. Vice President of Special Services & Equity

## Accreditation

McNeese State University is accredited by the Commission on Colleges of the Southern Association of Colleges and Schools, 1866 Southern Lane, Decatur, Georgia 30033-4097, P- 404.679.4500, [www.sacscoc.org](http://www.sacscoc.org), to award associate, bachelor, master, and specialist degrees. A comprehensive list of other agencies included in the Board of Regents General Policy on Program Accreditation that have accredited or approved McNeese academic programs follows:

- AACSB International – The Association to Advance Collegiate Schools of Business International, 7777 South Harbor Island Blvd., Suite 750, Tampa, FL 33602-5730, P- (813) 769-6500, [www.aacsb.edu/](http://www.aacsb.edu/).
- AAFCS – American Association of Family and Consumer Sciences, 400 N. Columbus St., Suite 202, Alexandria, VA 22314, P- (703) 706-4600, [www.aafcs.org](http://www.aafcs.org).
- ACS – American Chemical Society, 1155 Sixteenth St. NW, Washington, DC 20036, P- (800) 227-5558, [www.acs.org](http://www.acs.org).
- CADE – Commission on Accreditation for Dietetics Education, American Dietetic Association, 120 S. Riverside Plaza, Suite 2000, Chicago, IL 60606-6995, P- (800)877-1600, [www.eatright.org](http://www.eatright.org).
- CAC/ABET Inc. – Computing Accreditation Commission of the Accreditation Board of Engineering and Technology, 111 Market Place, Suite 1050, Baltimore, MD 21202-4012, P- (410) 347.7700, [www.abet.org](http://www.abet.org).
- EAC/ABET Inc. – Engineering Accreditation Commission of the Accreditation Board of Engineering and Technology, 111 Market Place, Suite 1050, Baltimore, MD 21202-4012, P- (410) 347-7700, [www.abet.org](http://www.abet.org).
- JRCERT – Joint Review Committee on Education in Radiologic Technology, 20 N. Wacker Drive, Suite 2850, Chicago, IL 60606-3182, P- (312) 704-5300, [www.jrcert.org](http://www.jrcert.org).
- NAACLS – National Accrediting Agency for Clinical Laboratory Sciences, 8410 W. Bryn Mawr Ave., Suite 670, Chicago, IL 60631, P- (773) 714-8880, [www.naacls.org](http://www.naacls.org).
- NASAD – National Association of Schools of Art and Design, 11250 Roger Bacon Dr., Suite 21, Reston, VA 20190, P-(703) 437-0700, <http://nasad.arts-accredit.org/>.
- NASM – National Association of Schools of Music, 11250 Roger Bacon Drive, Suite 21, Reston, VA 20190-5248, P-(703) 437-0700, <http://nasm.arts-accredit.org>.
- NCATE – National Council for Accreditation of Teacher Education, 2010 Massachusetts Ave. NW, Suite 500, Washington, DC 20036, P- (202) 466-7496, [www.ncate.org](http://www.ncate.org).
- NLNAC – National League for Nursing Accrediting Commission, 61 Broadway, New York, NY 10006, P- (800) 669-1656, [www.nln.org](http://www.nln.org).
- TAC/ABET Inc. – Technology Accreditation Commission of the Accreditation Board of Engineering and Technology, 111 Market Place, Suite 1050, Baltimore, MD 21202-4012, P- (410) 347-7700, [www.abet.org](http://www.abet.org).

Other agencies that have approved or certified programs include:

- AAHPERD/NASPE – American Alliance for Health, Physical Education, Recreation and Dance/National Association for Sport and Physical Education
- ACEI – Association for Childhood Education International
- CEC – Council for Exceptional Children
- ISTE – International Society for Technology Education
- BESE – Louisiana Board of Elementary and Secondary Education
- ELCC – Educational Leaders Constituency Consortium
- LSBN – Louisiana State Board of Nursing
- NAEYC – National Association for the Education of Young Children
- NCAA – National Collegiate Athletic Association
- NCSS – National Council for the Social Studies
- NCTE – National Council of Teachers of English
- NCTM – National Council of Teachers of Mathematics
- NSTA – National Science Teachers Association
- OAKE – Organization of American Kodály Educators



# Inventory of Degree Programs

## General and Basic Studies

General Studies.....	A.G.S.
General Studies.....	B.G.S.

## College of Business

Accounting.....	B.S.
Business Administration.....	M.B.A.
Finance.....	B.S.
General Business Administration.....	B.S.
Management.....	B.S.
Marketing.....	B.S.

## Burton College of Education

Athletic Training.....	B.S.
Business Education—Grades 6-12.....	B.S.
Curriculum and Instruction.....	M.Ed.
Early Childhood Education—Grades PK-3.....	B.S.
Educational Leadership.....	M.Ed.
Educational Leadership.....	Ed.S.
Educational Technology Leadership .....	M.Ed.
Elementary Education—Grades 1-5.....	B.S.
Elementary Education—Grades 1-5.....	M.A.T.
Health and Physical Education—Grades K-12.....	B.S.
Health and Human Performance, General .....	B.S.
Health and Human Performance .....	M.S.
Instructional Technology.....	M.S.
Psychology.....	B.S.
Psychology.....	M.A.
School Counseling.....	M.Ed.
Secondary Education—Grades 6-12.....	M.A.T.
Special Education.....	M.Ed.
Special Education, General.....	B.A.
Special Education Mild/Moderate—Grades 1-12.....	M.A.T.

## College of Engineering & Engineering Technology

Engineering.....	B.S.
Engineering.....	M. Eng.
Engineering Technology.....	A.S.
Engineering Technology.....	B.S.

### College of Liberal Arts

Art.....	B.A.
Art Education—Grades K-12.....	B.A.
Creative Writing.....	M.F.A.
Criminal Justice.....	B.S.
English.....	B.A.
English.....	M.A.
English Education—Grades 6-12.....	B.A.
Foreign Languages Education—Grades 6-12.....	B.A.
French.....	B.A.
Government.....	B.A.
History.....	B.A.
Liberal Studies.....	B.A.
Mass Communication.....	B.S.
Music Education— Instrumental Grades K-12 .....	B.M.Ed.
Music Education—Vocal Grades K-12 .....	B.M.Ed.
Music Education.....	M.M.Ed.
Music Performance.....	B.M.
Paralegal Studies.....	A.A.
Social Studies Education—Grades 6-12.....	B.A.
Sociology.....	B.A.
Spanish.....	B.A.
Speech.....	B.A.
Speech Education—Grades 6-12.....	B.S.
Theatre Arts.....	B.A.

### College of Nursing

Nursing.....	A.D.N.
Nursing.....	B.S.N.
Nursing.....	M.S.N.

### College of Science

Agricultural Education—Grades 6-12.....	B.S.
Agricultural Sciences.....	B.S.
Biological Science.....	B.S.
Biology Education—Grades 6-12.....	B.S.
Chemistry.....	B.S.
Chemistry Education—Grades 6-12.....	B.S.
Clinical Laboratory Science.....	B.S.
Computer Information Technology.....	A.S.
Computer Science.....	B.S.
Environmental and Chemical Sciences.....	M.S.
Environmental Science.....	B.S.
Environmental Science Education—Grades 6-12.....	B.S.
Family and Consumer Sciences.....	B.S.
Mathematics Education—Grades 6-12.....	B.S.
Mathematical Sciences.....	M.S.
Mathematics.....	B.S.
Radiologic Sciences.....	B.S.
Physics.....	B.S.
Wildlife Management.....	B.S.

This Page is Intentionally Left Blank

## Enrollment Fall 2008

### Fall 2008 Enrollment by Level

	<u><b>Enrollment</b></u>	<u><b>Percent</b></u>
Undergraduate	7,282	87.8%
Graduate	1,012	12.2%
<b><i>Total</i></b>	<b><i>8,294</i></b>	<b><i>100.0%</i></b>

### Fall 2008 Full-Time Equivalent Enrollment by Level

	<u><b>Enrollment</b></u>	<u><b>Percent</b></u>
Undergraduate (12 hours)	8,272.3	91.5%
Graduate (9 hours)	773.2	8.5%
<b><i>Total</i></b>	<b><i>9,045.5</i></b>	<b><i>100.0%</i></b>

### Fall 2008 Enrollment by Rank

	<u><b>Enrollment</b></u>	<u><b>Percent</b></u>
Early Admissions	401	4.8%
Freshman	2,475	29.9%
Sophomore	1,297	15.6%
Junior	1,254	15.1%
Senior	1,836	22.1%
Masters Candidate	776	9.4%
Education Specialist	6	.1%
Special Graduate	223	2.7%
Non-Credit/Non-Degree	26	.3%
<b><i>Total</i></b>	<b><i>8,294</i></b>	<b><i>100.0%</i></b>



### Fall 2008 Enrollment by Full-Time/Part-Time Status

	<u>Undergraduate</u>	<u>Graduate</u>	<u>Total</u>	<u>Percent</u>
Full-Time	5,890	366	6,256	75.4%
Part-Time	1,392	646	2,038	24.6%
<b>Total</b>	<b>7,282</b>	<b>1,012</b>	<b>8,294</b>	<b>100.0%</b>

### Fall 2008 Enrollment by Current Entry Status

	<u>Undergraduate</u>	<u>Graduate</u>	<u>Total</u>	<u>Percent</u>
Early Admissions	401		401	4.8%
Continuing	4,887	677	5,564	67.1%
First-Time Freshmen	1,342		1,342	16.2%
First-Time Other	5		5	.1%
New Graduate		256	256	3.1%
Re-Entry	293	71	364	4.4%
Transfer	344	7	351	4.2%
Visiting	10	1	11	.1%
<b>Total</b>	<b>7,282</b>	<b>1,012</b>	<b>8,294</b>	<b>100.0%</b>

### Fall 2008 Enrollment by Gender

	<u>Undergraduate</u>	<u>Graduate</u>	<u>Total</u>	<u>Percent</u>
Female	4,421	698	5,119	61.7%
Male	2,861	314	3,175	38.3%
<b>Total</b>	<b>7,282</b>	<b>1,012</b>	<b>8,294</b>	<b>100.0%</b>

### Fall 2008 Enrollment by Ethnicity

	<u>Undergraduate</u>	<u>Graduate</u>	<u>Total</u>	<u>Percent</u>
Amer Indian/Alaska Native	49	2	51	.6%
Asian/Pacific Islander	89	9	98	1.2%
Black	1,336	114	1,450	17.5%
Foreign	237	138	375	4.5%
Hispanic	103	14	117	1.4%
White	5,387	728	6,115	73.7%
Race/Ethnicity Unknown	81	7	88	1.1%
<b>Total</b>	<b>7,282</b>	<b>1,012</b>	<b>8,294</b>	<b>100.0%</b>

### Fall 2008 Enrollment by Gender and Ethnicity

	<b><u>Female</u></b>	<b><u>Male</u></b>	<b><u>Total</u></b>	<b><u>Percent</u></b>
Amer Indian/Alaska Native	32	19	51	.6%
Asian/Pacific Islander	61	37	98	1.2%
Black	993	457	1,450	17.5%
Foreign	139	236	375	4.5%
Hispanic	83	34	117	1.4%
White	3,762	2,353	6,115	73.7%
Race/Ethnicity Unknown	49	39	88	1.1%
<b><i>Total</i></b>	<b><i>5,119</i></b>	<b><i>3,175</i></b>	<b><i>8,294</i></b>	<b><i>100.0%</i></b>

### Fall 2008 Undergraduate Enrollment by Gender and Ethnicity

	<b><u>Female</u></b>	<b><u>Male</u></b>	<b><u>Total</u></b>	<b><u>Percent</u></b>
Amer Indian/Alaska Native	30	19	49	.7%
Asian/Pacific Islander	55	34	89	1.2%
Black	894	442	1,336	18.3%
Foreign	100	137	237	3.3%
Hispanic	72	31	103	1.4%
White	3,224	2,163	5,387	74.0%
Race/Ethnicity Unknown	46	35	81	1.1%
<b><i>Total</i></b>	<b><i>4,421</i></b>	<b><i>2,861</i></b>	<b><i>7,282</i></b>	<b><i>100.0%</i></b>

### Fall 2008 Graduate Enrollment by Gender and Ethnicity

	<b><u>Female</u></b>	<b><u>Male</u></b>	<b><u>Total</u></b>	<b><u>Percent</u></b>
Amer Indian/Alaska Native	2		2	.2%
Asian/Pacific Islander	6	3	9	.9%
Black	99	15	114	11.3%
Foreign	39	99	138	13.6%
Hispanic	11	3	14	1.4%
White	538	190	728	71.9%
Race/Ethnicity Unknown	3	4	7	.7%
<b><i>Total</i></b>	<b><i>698</i></b>	<b><i>314</i></b>	<b><i>1,012</i></b>	<b><i>100.0%</i></b>

### Fall 2008 Undergraduate Enrollment by Rank and Ethnicity

	<b><u>EA</u></b>	<b><u>FR</u></b>	<b><u>SO</u></b>	<b><u>JR</u></b>	<b><u>SR</u></b>	<b><u>ND</u></b>	<b><u>Total</u></b>
Amer Indian/Alaska Native	3	16	12	6	12		49
Asian/Pacific Islander	7	27	16	17	22		89
Black	40	525	231	209	327	4	1,336
Foreign		95	48	40	54		237
Hispanic	8	33	12	24	26		103
White	330	1,751	965	950	1,376	15	5,387
Race/Ethnicity Unknown	13	28	13	8	19		81
<b><i>Total</i></b>	<b><i>401</i></b>	<b><i>2,475</i></b>	<b><i>1,297</i></b>	<b><i>1,254</i></b>	<b><i>1,836</i></b>	<b><i>19</i></b>	<b><i>7,282</i></b>

EA – Early Admissions  
FR – Freshman  
SO – Sophomore

JR – Junior  
SR – Senior  
ND – Non-Credit/Non-Degree

### Fall 2008 Graduate Enrollment by Rank and Ethnicity

	<b><u>MC</u></b>	<b><u>ES</u></b>	<b><u>SG</u></b>	<b><u>ND</u></b>	<b><u>Total</u></b>
Amer Indian/Alaska Native	1		1		2
Asian/Pacific Islander	7		2		9
Black	86		28		114
Foreign	136		2		138
Hispanic	11		3		14
White	531	6	184	7	728
Race/Ethnicity Unknown	4		3		7
<b><i>Total</i></b>	<b><i>776</i></b>	<b><i>6</i></b>	<b><i>223</i></b>	<b><i>7</i></b>	<b><i>1,012</i></b>

MC – Masters Candidate  
ES – Education Specialist

SG – Special Graduate  
ND – Non-Credit/Non-Degree

### Fall 2008 Enrollment by Age

	<u>Undergraduate</u>	<u>Graduate</u>	<u>Total</u>	<u>Percent</u>
Under 18	435		435	5.3%
18 – 19	2,141		2,141	25.8%
20 – 21	1,834	7	1,841	22.2%
22 – 24	1,458	252	1,710	20.6%
25 – 29	639	308	947	11.4%
30 – 34	312	162	474	5.7%
35 – 39	184	102	286	3.5%
40 – 49	205	116	321	3.9%
50 – 64	70	58	128	1.5%
Over 64	4	7	11	.1%
<b>Total</b>	<b>7,282</b>	<b>1,012</b>	<b>8,294</b>	<b>100.0%</b>

### Fall 2008 Enrollment by Age Group

	<u>Undergraduate</u>	<u>Graduate</u>	<u>Total</u>	<u>Percent</u>
Under 25	5,868	259	6,127	73.9%
25 and Older	1,414	753	2,167	26.1%
<b>Total</b>	<b>7,282</b>	<b>1,012</b>	<b>8,294</b>	<b>100.0%</b>

### Fall 2008 Average Age

	<u>Average Age</u>	<u>Median Age</u>
All Students	23.7	21
First-Time Freshmen	18.8	18
Undergraduate	22.6	21
Graduate	31.6	28



## Fall 2008 Enrollment by Parish

<u>Parish</u>	<u>Enrollment</u>		<u>Parish</u>	<u>Enrollment</u>
Acadia	196		St Martin	39
Allen	284		St Mary	28
Ascension	18		St Tammany	33
Assumption	6		Tangipahoa	8
Avoyelles	6		Terrebonne	24
Beauregard	514		Vermilion	127
Bossier	12		Vernon	133
Caddo	27		Washington	4
Calcasieu	4355		Webster	2
Cameron	222		West Baton Rouge	4
Concordia	3		West Carroll	1
DeSoto	5		West Feliciana	8
East Carroll	1		Winn	1
East Baton Rouge	57			
East Feliciana	3		Total Louisiana	7,363
Evangeline	127		% of Total Enrollment	88.8%
Franklin	2		Number of Parishes	56
Grant	4			
Iberia	37			
Iberville	6		Five Parish Total	5,897
Jackson	2		% of Total Enrollment	71.1%
Jefferson	28			
Jefferson Davis	522			
Lafayette	143			
Lafourche	11			
LaSalle	3			
Lincoln	4			
Livingston	22			
Madison	2			
Morehouse	2			
Natchitoches	15			
Orleans	37			
Ouachita	24			
Plaquemines	4			
Pointe Coupee	7			
Rapides	62			
Sabine	14			
St Bernard	4			
St Charles	11			
St Helena	1			
St James	4			
St John	3			
St Landry	141			

## Fall 2008 Enrollment by State

<u>State</u>	<u>Enrollment</u>
Alabama	4
Alaska	1
Arizona	4
Arkansas	3
California	5
Colorado	2
Connecticut	2
Florida	8
Georgia	3
Idaho	1
Illinois	6
Indiana	3
Iowa	3
Kansas	5
Louisiana	7,363
Maryland	2
Massachusetts	2
Michigan	3
Minnesota	2
Mississippi	15
Missouri	1
Nebraska	1
Nevada	1
New Jersey	3
New Mexico	3
New York	3
North Carolina	5
Ohio	3
Oklahoma	10
Pennsylvania	4
South Carolina	1
Tennessee	6
Texas	388
Virginia	5
Washington	1
Wisconsin	3
Wyoming	1
Total	7,876
Total Out of State	513
% Out of State of Total Enrollment	6.2%
Number of States (Other than Louisiana)	36

## Fall 2008 Enrollment by Foreign Country

<u>Country</u>	<u>Enrollment</u>		<u>Country</u>	<u>Enrollment</u>
Azerbaijan	5		Thailand	15
Bangladesh	1		Trinidad and Tobago	4
Bolivia	8		Turkey	6
British Virgin Islands	1		Turkmenistan	1
Cambodia	1		Ukraine	1
Canada	6		United Kingdom	8
Chile	2		Venezuela	2
China	42		Vietnam	30
Colombia	18			
Croatia	1		Total Foreign	418
Ecuador	11		% of Total Enrollment	5.0%
Ethiopia	1		Number of Countries (Other than USA)	52
Germany	3			
Honduras	5			
India	82			
Indonesia	18			
Ireland	4			
Israel	2			
Jamaica	3			
Japan	2			
Kenya	2			
Korea, Republic of	13			
Lithuania	1			
Macedonia	1			
Mexico	9			
Mongolia	1			
Nepal	51			
Netherlands	1			
New Zealand	1			
Niger	1			
Nigeria	9			
Pakistan	6			
Panama	1			
Peru	9			
Philippines	3			
Portugal	2			
Romania	3			
Russia	3			
Saudi Arabia	2			
Serbia	1			
Slovenia	1			
South Africa	3			
Spain	1			
Taiwan	10			

### Fall 2008 Undergraduate Enrollment by Residency

	<b><u>Part-Time</u></b>	<b><u>Full-Time</u></b>	<b><u>Total</u></b>	<b><u>Percent</u></b>
Louisiana	1,339	5,208	6,547	89.9%
Out of state	42	423	465	6.4%
Foreign	11	259	270	3.7%
<b><i>Total</i></b>	<b><i>1,392</i></b>	<b><i>5,890</i></b>	<b><i>7,282</i></b>	<b><i>100.0%</i></b>

### Fall 2008 Graduate Enrollment by Residency

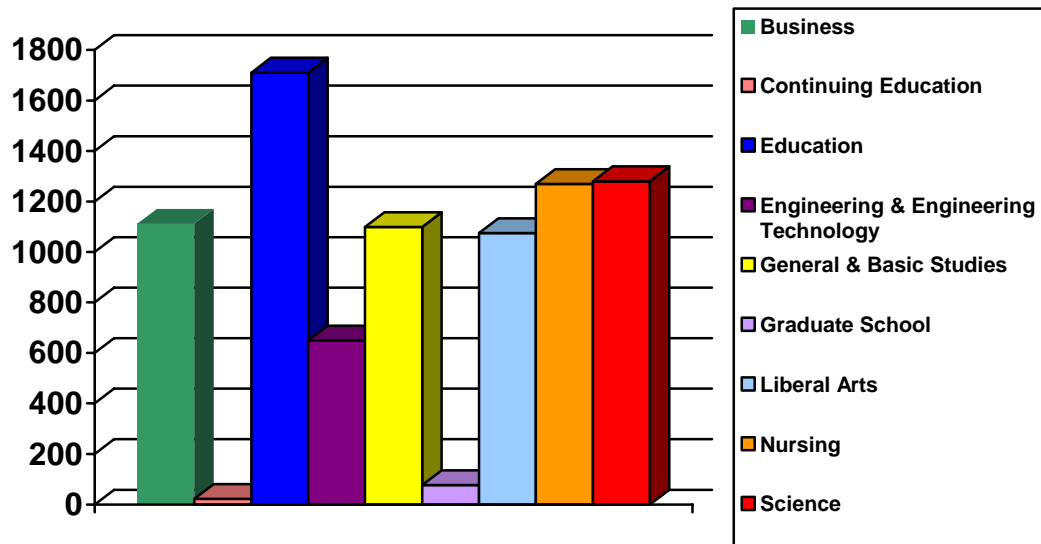
	<b><u>Part-Time</u></b>	<b><u>Full-Time</u></b>	<b><u>Total</u></b>	<b><u>Percent</u></b>
Louisiana	606	210	816	80.6%
Out of state	21	27	48	4.7%
Foreign	19	129	148	14.6%
<b><i>Total</i></b>	<b><i>646</i></b>	<b><i>366</i></b>	<b><i>1,012</i></b>	<b><i>100.0%</i></b>



This Page is Intentionally Left Blank

## Fall 2008 Enrollment by College

	<u>Undergraduate</u>	<u>Graduate</u>	<u>Total</u>	<u>Percent</u>
Business	1,013	99	1,112	13.4%
Continuing Education	10	12	22	.3%
Education	1,143	567	1,710	20.6%
Engineering & Engineering Technology	579	71	650	7.8%
General & Basic Studies	1,099		1,099	13.3%
Graduate School		77	77	.9%
Liberal Arts	1,037	38	1,075	13.0%
Nursing	1,181	88	1,269	15.3%
Science	1,220	60	1,280	15.4%
<b>Total</b>	<b>7,282</b>	<b>1,012</b>	<b>8,294</b>	<b>100.0%</b>



### Historical Fall Undergraduate Enrollment by College

	<u>2004</u>	<u>2005</u>	<u>2006</u>	<u>2007</u>	<u>2008</u>
Business	1,194	1,088	1,071	975	1,013
Continuing Education	35	15	10	12	10
Education	1,405	1,340	1,218	1,168	1,143
Engineering & Engineering Technology	510	515	529	528	579
General & Basic Studies	982	1,206	1,017	1,010	1,099
Liberal Arts	1,288	1,216	1,103	1,004	1,037
Nursing	1,051	1,193	1,133	1,139	1,181
Science	1,259	1,274	1,255	1,217	1,220
<b>Total</b>	<b>7,724</b>	<b>7,847</b>	<b>7,336</b>	<b>7,053</b>	<b>7,282</b>

### Historical Fall Graduate Enrollment by College

	<u>2004</u>	<u>2005</u>	<u>2006</u>	<u>2007</u>	<u>2008</u>
Business	81	73	74	80	99
Continuing Education	19	18	16	20	12
Education	550	640	570	576	567
Engineering & Engineering Technology	78	84	78	100	71
Graduate School	133	154	96	54	77
Liberal Arts	47	37	34	34	38
Nursing	65	66	58	82	88
Science	87	73	81	96	60
<b>Total</b>	<b>1,060</b>	<b>1,145</b>	<b>1,007</b>	<b>1,042</b>	<b>1,012</b>

## Fall 2008 Enrollment by College and Department

<b><u>College</u></b>	<b><u>Department Name</u></b>	<b><u>Undergraduate</u></b>	<b><u>Graduate</u></b>	<b><u>Total</u></b>
Business	Accounting, Fin, & Economics	349		349
	Mgmt, Marketing and Gen Bus	664	99	763
<b><i>College of Business Total</i></b>		<b><i>1,013</i></b>	<b><i>99</i></b>	<b><i>1,112</i></b>
Continuing Education	Continuing Education	10	12	22
<b><i>Continuing Education Total</i></b>		<b><i>10</i></b>	<b><i>12</i></b>	<b><i>22</i></b>
Education	Educ Leadership & Instr Tech	20	115	135
	Health & Human Performance	394	39	433
	Psychology	238	63	301
	Teacher Education	491	350	841
<b><i>College of Education Total</i></b>		<b><i>1,143</i></b>	<b><i>567</i></b>	<b><i>1,710</i></b>
Engineering & Engineering Technology	Engineering	409	71	480
	Engineering Technology	170		170
<b><i>College of Engineering &amp; Engineering Technology Total</i></b>		<b><i>579</i></b>	<b><i>71</i></b>	<b><i>650</i></b>
General & Basic Studies	Basic Studies	1,099		1,099
<b><i>General &amp; Basic Studies Total</i></b>		<b><i>1,099</i></b>		<b><i>1,099</i></b>
Graduate School	Graduate School		77	77
<b><i>Graduate School Total</i></b>			<b><i>77</i></b>	<b><i>77</i></b>
Liberal Arts	English & Foreign Languages	141	33	174
	History	129		129
	Mass Communication	164		164
	Performing Arts	104	5	109
	Social Sciences	327		327
	Visual Arts	172		172
<b><i>College of Liberal Arts Total</i></b>		<b><i>1,037</i></b>	<b><i>38</i></b>	<b><i>1,075</i></b>
Nursing	Graduate Nursing		88	88
	Undergraduate Nursing	1,181		1,181
<b><i>College of Nursing Total</i></b>		<b><i>1,181</i></b>	<b><i>88</i></b>	<b><i>1,269</i></b>
Science	Agriculture	236	11	247
	Biological & Envr Sciences	600	9	609
	Chemistry	108	14	122
	Math, Computer Science, & Stat	170	26	196
	Nutrition and Family Studies	97		97
	Physics	9		9
<b><i>College of Science Total</i></b>		<b><i>1,220</i></b>	<b><i>60</i></b>	<b><i>1,280</i></b>
<b>University Total</b>		<b>7,282</b>	<b>1,012</b>	<b>8,294</b>

## **Historical Undergraduate Enrollment by College and Department**

<b><u>College</u></b>	<b><u>Department Name</u></b>	<b><u>2004</u></b>	<b><u>2005</u></b>	<b><u>2006</u></b>	<b><u>2007</u></b>	<b><u>2008</u></b>
Business	Accounting, Fin, & Economics	377	376	370	335	349
	Mgmt, Marketing and Gen Bus	817	712	701	640	664
<b><i>College of Business Total</i></b>		<b><i>1,194</i></b>	<b><i>1,088</i></b>	<b><i>1,071</i></b>	<b><i>975</i></b>	<b><i>1,013</i></b>
Continuing Education	Continuing Education	35	15	10	12	10
<b><i>Continuing Education Total</i></b>		<b><i>35</i></b>	<b><i>15</i></b>	<b><i>10</i></b>	<b><i>12</i></b>	<b><i>10</i></b>
Education	Educ Leadership & Instr Tech	19	20	21	20	20
	Health & Human Performance	398	396	368	381	394
	Psychology	252	257	233	244	238
	Teacher Education	736	667	596	523	491
<b><i>College of Education Total</i></b>		<b><i>1,405</i></b>	<b><i>1,340</i></b>	<b><i>1,218</i></b>	<b><i>1,168</i></b>	<b><i>1,143</i></b>
Engineering & Engineering Technology	Engineering	376	353	361	372	409
	Engineering Technology	134	162	168	156	170
<b><i>College of Engineering &amp; Engineering Technology Total</i></b>		<b><i>510</i></b>	<b><i>515</i></b>	<b><i>529</i></b>	<b><i>528</i></b>	<b><i>579</i></b>
General & Basic Studies	Basic Studies	982	1,206	1,017	1,010	1,099
<b><i>Gen &amp; Basic Studies Total</i></b>		<b><i>982</i></b>	<b><i>1,206</i></b>	<b><i>1,017</i></b>	<b><i>1,010</i></b>	<b><i>1,099</i></b>
Liberal Arts	English & Foreign Languages	117	138	135	131	141
	History	151	152	129	132	129
	Mass Communication	230	209	186	154	164
	Performing Arts	131	115	110	99	104
	Social Sciences	478	431	369	317	327
	Visual Arts	181	171	174	171	172
<b><i>College of Liberal Arts Total</i></b>		<b><i>1,288</i></b>	<b><i>1,216</i></b>	<b><i>1,103</i></b>	<b><i>1,004</i></b>	<b><i>1,037</i></b>
Nursing	Undergraduate Nursing	1,051	1,193	1,133	1,139	1,181
<b><i>College of Nursing Total</i></b>		<b><i>1,051</i></b>	<b><i>1,193</i></b>	<b><i>1,133</i></b>	<b><i>1,139</i></b>	<b><i>1,181</i></b>
Science	Agriculture	214	211	214	225	236
	Biological & Envr Sciences	582	589	619	608	600
	Chemistry	84	106	102	91	108
	Math, Computer Science, & Stat	193	188	164	165	170
	Nutrition and Family Studies	178	171	145	118	97
	Physics	8	9	11	10	9
<b><i>College of Science Total</i></b>		<b><i>1,259</i></b>	<b><i>1,274</i></b>	<b><i>1,255</i></b>	<b><i>1,217</i></b>	<b><i>1,220</i></b>
<b>University Total</b>		<b>7,724</b>	<b>7,847</b>	<b>7,336</b>	<b>7,053</b>	<b>7282</b>

## Historical Graduate Enrollment by College and Department

<u>College</u>	<u>Department Name</u>	<u>2004</u>	<u>2005</u>	<u>2006</u>	<u>2007</u>	<u>2008</u>
Business	Mgmt, Marketing and Gen Bus	81	73	74	80	99
<b><i>College of Business Total</i></b>		<b>81</b>	<b>73</b>	<b>74</b>	<b>80</b>	<b>99</b>
Continuing Education	Continuing Education	19	18	16	20	12
<b><i>Continuing Education Total</i></b>		<b>19</b>	<b>18</b>	<b>16</b>	<b>20</b>	<b>12</b>
Education	Educ Leadership & Instr Tech	195	203	138	117	115
	Health & Human Performance	33	28	26	26	39
	Psychology	66	75	53	67	63
	Teacher Education	256	334	353	366	350
<b><i>College of Education Total</i></b>		<b>550</b>	<b>640</b>	<b>570</b>	<b>576</b>	<b>567</b>
Engineering & Engineering Tech	Engineering	78	84	78	100	71
<b><i>College of Engineering &amp; Engineering Technology Total</i></b>		<b>78</b>	<b>84</b>	<b>78</b>	<b>100</b>	<b>71</b>
Graduate School	Graduate School	133	154	96	54	77
<b><i>Graduate School Total</i></b>		<b>133</b>	<b>154</b>	<b>96</b>	<b>54</b>	<b>77</b>
Liberal Arts	English & Foreign Languages	39	36	28	28	33
	Performing Arts	8	1	6	6	5
<b><i>College of Liberal Arts Total</i></b>		<b>47</b>	<b>37</b>	<b>34</b>	<b>34</b>	<b>38</b>
Nursing	Graduate Nursing	65	66	58	82	88
<b><i>College of Nursing Total</i></b>		<b>65</b>	<b>66</b>	<b>58</b>	<b>82</b>	<b>88</b>
Science	Agriculture		3	7	8	11
	Biological & Envr Sciences	4	14	9	7	9
	Chemistry	1	18	19	11	14
	Math, Computer Science, & Stat	40	30	38	62	26
	Nutrition and Family Studies	8	8	8	8	
	Science*	34				
<b><i>College of Science Total</i></b>		<b>87</b>	<b>73</b>	<b>81</b>	<b>96</b>	<b>60</b>
<b>University Total</b>		<b>1,060</b>	<b>1,145</b>	<b>1,007</b>	<b>1,042</b>	<b>1,012</b>

\* MS Environmental & Chemical Sciences

## Fall 2008 Enrollment by Department and Major

<u>College/Department</u>	<u>Major</u>	<u>Undergraduate</u>	<u>Graduate</u>	<u>Total</u>
<b>Business</b>				
Accounting, Fin & Economics	Accounting	248		248
	Finance	97		97
	Undeclared	4		4
<i>Department Total</i>		<i>349</i>		<i>349</i>
Mgmt, Marketing, & Gen Bus	Business Administration		99	99
	Gen Business Administration	260		260
	Management	243		243
	Marketing	160		160
	Undeclared	1		1
<i>Department Total</i>		<i>664</i>	<i>99</i>	<i>763</i>
<b>College of Business Total</b>		<b>1,013</b>	<b>99</b>	<b>1,112</b>
<b>Continuing Education</b>				
Continuing Education	EASE Program	10	12	22
<i>Department Total</i>		<i>10</i>	<i>12</i>	<i>22</i>
<b>Continuing Education Total</b>		<b>10</b>	<b>12</b>	<b>22</b>
<b>Education</b>				
Educ Leadership & Instr Tech	Administration & Supervision		1	1
	Business Education – Grades 6-12	20		20
	Educational Leadership		68	68
	Educational Technology		2	2
	Educational Technology Leadership		20	20
	Instructional Technology		24	24
<i>Department Total</i>		<i>20</i>	<i>115</i>	<i>135</i>
Health & Human Performance	Athletic Training	44		44
	Health & Human Performance		39	39
	Health & Human Performance, Education	21		21
	Health & Human Performance, General	202		202
	Health & Physical Education, Gr K-12	126		126
	Undeclared	1		1
<i>Department Total</i>		<i>394</i>	<i>39</i>	<i>433</i>
Psychology	Psychology	237	63	300
	Undeclared	1		1
<i>Department Total</i>		<i>238</i>	<i>63</i>	<i>301</i>

### Fall 2008 Enrollment by Department and Major (continued)

<u>College/Department</u>	<u>Major</u>	<u>Undergraduate</u>	<u>Graduate</u>	<u>Total</u>
Teacher Education	Add-on Teacher Certification		18	18
	Alt Certification – Grades 1-12 Mild/Moderate Sp Ed		16	16
	Alt Certification – Grades K-12 Health & Physical Ed		7	7
	Alt Certification – Grades 1-5		49	49
	Alt Certification – Grade 6-12		18	18
	Alt Certification – K-12 Art Ed		6	6
	Alt Certification – Grades PK-3		27	27
	Curriculum and Instruction		13	13
	Early Childhood Education	4		4
	Early Childhood Educ – Grades PK- 3	235		235
	Education		4	4
	Elementary Education	3		3
	Elementary Education – Grades 1–5	224	61	285
	School Counseling		19	19
	Secondary Education	3		3
	Secondary Education Grades 6-12		72	72
	Special Education, Mild/Mod Gr 1-12		36	36
	Special Education		4	4
	Special Education, General	22		
<i>Department Total</i>		<i>491</i>	<i>350</i>	<i>841</i>
<i>College of Education Total</i>				
<b>Engineering &amp; Engineering Technology</b>				
Engineering	Engineering	408	71	479
	Undeclared	1		1
<i>Department Total</i>		<i>409</i>	<i>71</i>	<i>480</i>
Engineering Technology	Engineering Technology	170		170
<i>Department Total</i>		<i>170</i>		<i>170</i>
<i>College of Engineering &amp; Engineering Technology Total</i>		<i>579</i>	<i>71</i>	<i>650</i>
<b>General &amp; Basic Studies</b>				
Basic Studies	Basic Studies	201		201
	General Studies	496		496
	Undeclared	402		402
<i>Department Total</i>		<i>1,099</i>		<i>1,099</i>
<i>General &amp; Basic Studies Total</i>		<i>1,099</i>		<i>1,099</i>



### Fall 2008 Enrollment by Department and Major (continued)

<u>College/Department</u>	<u>Major</u>	<u>Undergraduate</u>	<u>Graduate</u>	<u>Total</u>
<b>Graduate School</b>				
Graduate School	Non-degree		77	77
<i>Department Total</i>			77	77
<b>Graduate School Total</b>			77	77
<b>Liberal Arts</b>				
English & Foreign Languages	Creative Writing		21	21
	English	60	12	72
	English Education Grades 6 – 12	59		59
	Foreign Language Education Gr 6-12	8		8
	French	4		4
	Spanish	10		10
<i>Department Total</i>		141	33	174
History	General Studies	1		1
	History	54		54
	Liberal Studies	22		22
	Social Studies Education Gr 6 – 12	52		52
<i>Department Total</i>		129		129
Mass Communication	Mass Communication	154		154
	Speech	9		9
	Speech Education Grades 6-12	1		1
<i>Department Total</i>		164		164
Performing Arts	Music Education	8	5	13
	Music Educ-Instrumental, Gr K-12	42		42
	Music Education – Vocal, Gr 6 – 12	15		15
	Music Performance	26		26
	Theatre Arts	13		13
<i>Department Total</i>		104	5	109
Social Sciences	Criminal Justice	176		176
	General Studies	3		3
	Government	38		38
	Paralegal Studies	35		35
	Sociology	75		75
<i>Department Total</i>		327		327

### Fall 2008 Enrollment by Department and Major (continued)

<u>College/Department</u>	<u>Major</u>	<u>Undergraduate</u>	<u>Graduate</u>	<u>Total</u>
Visual Arts	Art	143		143
	Art Education	1		1
	Art Education – Grades K – 12	27		27
	General Studies	1		1
<i>Department Total</i>		<i>172</i>		<i>172</i>
<i>College of Liberal Arts Total</i>		<i>1,037</i>	<i>38</i>	<i>1,075</i>
<b>Nursing</b>				
Graduate Nursing	Nursing		88	88
<i>Department Total</i>			<i>88</i>	<i>88</i>
Undergraduate Nursing	Nursing	1,179		1,179
	Undeclared	2		2
<i>Department Total</i>		<i>1,181</i>		<i>1,181</i>
<i>College of Nursing Total</i>		<i>1,181</i>	<i>88</i>	<i>1,269</i>
<b>Science</b>				
Agriculture	Agricultural Education – Grs 6 – 12	17		17
	Agricultural Sciences	173		173
	Environmental & Chemical Sciences		11	11
	Wildlife Management	46		46
<i>Department Total</i>		<i>236</i>	<i>11</i>	<i>247</i>
Biological & Envr Sciences	Biological Science	271		271
	Biology Education – Grades 6 – 12	19		19
	Clinical Laboratory Science	49		49
	Environmental & Chemical Sciences		9	9
	Environmental Science	33		33
	Environmental Science Education Grades 6-12	1		1
	Radiologic Technology	225		225
	Undeclared	2		2
<i>Department Total</i>		<i>600</i>	<i>9</i>	<i>609</i>
Chemistry	Chemistry	103		103
	Chemistry Education – Grades 6-12	4		4
	Environmental & Chemical Sciences		14	14
	Undeclared	1		1
<i>Department Total</i>		<i>108</i>	<i>14</i>	<i>122</i>

### Fall 2008 Enrollment by Department and Major (continued)

<u>College/Department</u>	<u>Major</u>	<u>Undergraduate</u>	<u>Graduate</u>	<u>Total</u>
Math, Computer Sci and Stat	Computer Information Tech	26		26
	Computer Science	80		80
	Mathematical Sciences		26	26
	Mathematics	24		24
	Mathematics Education – Grades 6-12	39		39
	Undeclared	1		1
<i>Department Total</i>		<i>170</i>	<i>26</i>	<i>196</i>
Nutrition & Family Studies	Family & Consumer Sciences Education Grades 6-12	1		1
	Family & Consumer Sciences	94		94
	General Studies	1		1
	Undeclared	1		1
<i>Department Total</i>		<i>97</i>		<i>97</i>
Physics	Physics	9		9
<i>Department Total</i>		<i>9</i>		<i>9</i>
<i>College of Science Total</i>		<i>1,220</i>	<i>60</i>	<i>1,280</i>
<b>University Total</b>		<b>7,282</b>	<b>1,012</b>	<b>8,294</b>

## Historical Enrollment Data Since 1939

<u>Fall</u>	<u>Under-graduate</u>	<u>Graduate</u>	<u>Total</u>		<u>Fall</u>	<u>Under-graduate</u>	<u>Graduate</u>	<u>Total</u>
<b>2008</b>	7,282	1,012	8,294		<b>1973</b>	4,922	915	5,837
<b>2007</b>	7,053	1,042	8,095		<b>1972</b>	5,226	959	6,185
<b>2006</b>	7,336	1,007	8,343		<b>1971</b>	5,067	958	6,025
<b>2005</b>	7,847	1,145	8,992		<b>1970</b>	4,844	750	5,594
<b>2004</b>	7,724	1,060	8,784		<b>1969</b>	4,568	582	5,150
<b>2003</b>	7,330	1,117	8,447		<b>1968</b>	4,618	472	5,090
<b>2002</b>	7,010	1,019	8,029		<b>1967</b>	4,234	308	4,542
<b>2001</b>	6,845	935	7,780		<b>1966</b>	3,983	333	4,316
<b>2000</b>	6,731	901	7,632		<b>1965</b>	3,512	295	3,807
<b>1999</b>	6,865	1,014	7,879		<b>1964</b>	3,149	211	3,360
<b>1998</b>	6,978	1,017	7,995		<b>1963</b>	2,663	164	2,827
<b>1997</b>	7,050	1,087	8,137		<b>1962</b>	2,999	132	3,131
<b>1996</b>	7,063	1,024	8,087		<b>1961</b>	2,848	98	2,946
<b>1995</b>	7,381	1,063	8,444		<b>1960</b>	2,697		2,697
<b>1994</b>	7,658	1,071	8,729		<b>1959</b>	2,502		2,502
<b>1993</b>	7,347	1,057	8,404		<b>1958</b>	2,444		2,444
<b>1992</b>	7,316	1,158	8,474		<b>1957</b>	2,024		2,024
<b>1991</b>	6,818	1,013	7,831		<b>1956</b>	1,916		1,916
<b>1990</b>	6,662	1,062	7,724		<b>1955</b>	1,661		1,661
<b>1989</b>	6,557	1,022	7,579		<b>1954</b>	1,367		1,367
<b>1988</b>	6,383	1,040	7,423		<b>1953</b>	1,192		1,192
<b>1987</b>	6,457	1,036	7,493		<b>1952</b>	993		993
<b>1986</b>	6,430	950	7,380		<b>1951</b>	905		905
<b>1985</b>	6,648	1,176	7,824		<b>1950</b>	501		501
<b>1984</b>	6,645	1,336	7,981		<b>1949</b>	397		397
<b>1983</b>	6,491	1,535	8,026		<b>1948</b>	575		575
<b>1982</b>	5,888	1,463	7,351		<b>1947</b>	615		615
<b>1981</b>	5,461	1,556	7,017		<b>1946</b>	640		640
<b>1980</b>	4,700	691	5,391		<b>1945</b>	233		233
<b>1979</b>	4,435	721	5,156		<b>1944</b>	131		131
<b>1978</b>	4,626	750	5,376		<b>1943</b>	146		146
<b>1977</b>	4,883	642	5,525		<b>1942</b>	169		169
<b>1976</b>	5,048	758	5,806		<b>1941</b>	223		223
<b>1975</b>	5,058	955	6,013		<b>1940</b>	242		242
<b>1974</b>	4,841	845	5,686		<b>1939</b>	254		254

This Page is Intentionally Left Blank

## First-Time Freshmen

### Fall 2008 First-Time Freshmen by Status

	<b><u>Total</u></b>	<b><u>Percent</u></b>
Full-Time	1,299	96.8%
Part-Time	43	3.2%
<b><i>Total</i></b>	<b><i>1,342</i></b>	<b><i>100.0%</i></b>

### Fall 2008 First-Time Freshmen by Gender

	<b><u>Full-Time</u></b>	<b><u>Part-Time</u></b>	<b><u>Total</u></b>	<b><u>Percent</u></b>
Female	760	22	782	58.3%
Male	539	21	560	41.7%
<b><i>Total</i></b>	<b><i>1,299</i></b>	<b><i>43</i></b>	<b><i>1,342</i></b>	<b><i>100.0%</i></b>

### Fall 2008 First-Time Freshmen by Ethnicity

	<b><u>Full-Time</u></b>	<b><u>Part-Time</u></b>	<b><u>Total</u></b>	<b><u>Percent</u></b>
Amer Indian/Alaska Native	7		7	.5%
Asian/Pacific Islander	11		11	.8%
Black	266	12	278	20.7%
Foreign	30		30	2.2%
Hispanic	18		18	1.4%
White	954	29	983	73.3%
Race/Ethnicity Unknown	13	2	15	1.1%
<b><i>Total</i></b>	<b><i>1,299</i></b>	<b><i>43</i></b>	<b><i>1,342</i></b>	<b><i>100.0%</i></b>

### Fall 2008 First-Time Freshmen Admissions

	<b><u>Total</u></b>
Applied	2,700
Accepted	2,031
Enrolled Full Time	1,299
Enrolled Part Time	43

## Fall 2008 First-Time Freshmen by Parish

Parish	Enrollment	Parish	Enrollment
Acadia	20		
Allen	56	Total Louisiana	1,211
Ascension	4	% of Total FTF	90.3%
Assumption	4	Number of Parishes	40
Avoyelles	2		
Beauregard	77		
Bossier	1	Five Parish Total	938
Caddo	10	% of Total FTF	70%
Calcasieu	681		
Cameron	36		
Concordia	1		
East Baton Rouge	11		
Evangeline	26		
Franklin	1		
Iberia	5		
Iberville	3		
Jefferson	4		
Jefferson Davis	88		
Lafayette	31		
Lafourche	1		
Livingston	8		
Natchitoches	3		
Orleans	6		
Ouachita	8		
Pointe Coupee	1		
Rapides	19		
Sabine	1		
St Charles	2		
St James	3		
St John	1		
St Landry	17		
St Martin	7		
St Mary	10		
St Tammany	4		
Tangipahoa	1		
Terrebonne	4		
Vermilion	22		
Vernon	27		
Washington	2		
West Feliciana	3		

## Fall 2008 First-Time Freshmen by State

<u>State</u>	<u>Enrollment</u>
Alabama	1
Arkansas	2
California	2
Georgia	1
Indiana	1
Kansas	3
Louisiana	1,211
Michigan	1
Mississippi	1
North Carolina	1
Ohio	1
Texas	82
Virginia	1
Total	1,308
Total Out of State	97
% of Total FTF	7.2%
Number of States (Other than Louisiana)	12



### Fall 2008 First-Time Freshmen by Foreign Country

<u>Country</u>	<u>Enrollment</u>
Bolivia	2
Canada	2
China	2
Indonesia	1
Ireland	2
Nepal	12
Nigeria	1
Thailand	1
Turkey	1
Venezuela	1
Vietnam	9
Total Foreign	34
% of Total FTF	2.5%
Number of Countries (Other than USA)	11

### Fall 2008 First-Time Freshmen by Residency

	<u>Full-Time</u>	<u>Part-Time</u>	<u>Total</u>	<u>Percent</u>
Louisiana	1,169	42	1,211	90.3%
Out of state	96	1	97	7.2%
Foreign	34		34	2.5%
<b>Total</b>	<b>1,299</b>	<b>43</b>	<b>1,342</b>	<b>100.0%</b>

### Fall 2008 First-Time Freshmen Enrollment by College

	<u>Full-Time</u>	<u>Part-Time</u>	<u>Total</u>	<u>Percent</u>
Business	147	3	150	11.2%
Education	187	5	192	14.3%
Engineering & Engineering Technology	111	5	116	8.6%
General & Basic Studies	176	11	187	13.9%
Liberal Arts	177	4	181	13.5%
Nursing	194	3	197	14.7%
Science	307	12	319	23.8%
<b>Total</b>	<b>1,299</b>	<b>43</b>	<b>1,342</b>	<b>100.0%</b>

### Historical Fall First-Time Freshmen Enrollment by College

	<u>2004</u>	<u>2005</u>	<u>2006</u>	<u>2007</u>	<u>2008</u>
Business	208	108	134	125	150
Continuing Education	9		3	3	
Education	210	172	164	167	192
Engineering & Engineering Technology	107	111	105	125	116
General & Basic Studies	357	337	272	251	187
Liberal Arts	225	147	153	139	181
Nursing	268	213	212	212	197
Science	289	281	276	279	319
<b>Total</b>	<b>1,673</b>	<b>1,369</b>	<b>1,319</b>	<b>1,301</b>	<b>1,342</b>

## Fall 2008 First-Time Freshmen by College and Department

<u>College</u>	<u>Department</u>	<u>Full-Time</u>	<u>Part-Time</u>	<u>Total</u>
Business	Accounting, Fin & Economics	41	1	42
	Mgmt, Marketing, & Gen Bus	106	2	108
<b><i>College of Business Total</i></b>		<b><i>147</i></b>	<b><i>3</i></b>	<b><i>150</i></b>
Education	Educ Leadership & Instr Tech	3	0	3
	Health & Human Performance	85	1	86
	Psychology	40	1	41
	Teacher Education	59	3	62
<b><i>College of Education Total</i></b>		<b><i>187</i></b>	<b><i>5</i></b>	<b><i>192</i></b>
Engineering & Engineering Technology	Engineering	87	5	92
	Engineering Technology	24		24
<b><i>College of Engineering &amp; Engineering Technology Total</i></b>		<b><i>111</i></b>	<b><i>5</i></b>	<b><i>116</i></b>
General & Basic Studies	Basic Studies	176	11	187
<b><i>General &amp; Basic Studies Total</i></b>		<b><i>176</i></b>	<b><i>11</i></b>	<b><i>187</i></b>
Liberal Arts	English & Foreign Languages	23		23
	History	11		11
	Mass Communication	35		35
	Performing Arts	38		38
	Social Sciences	50	4	54
	Visual Arts	20		20
<b><i>College of Liberal Arts Total</i></b>		<b><i>177</i></b>	<b><i>4</i></b>	<b><i>181</i></b>
Nursing	Undergraduate Nursing	194	3	197
<b><i>College of Nursing Total</i></b>		<b><i>194</i></b>	<b><i>3</i></b>	<b><i>196</i></b>
Science	Agriculture	68	1	69
	Biological & Envr Sciences	152	7	159
	Chemistry	38	1	39
	Math, Computer Sci and Stat	33	2	35
	Nutrition & Family Studies	12	1	13
	Physics	4	0	4
<b><i>College of Science Total</i></b>		<b><i>307</i></b>	<b><i>12</i></b>	<b><i>319</i></b>
<b>University Total</b>		<b>1,299</b>	<b>43</b>	<b>1,342</b>

## Historical First-Time Freshmen Enrollment by College and Department

<b><u>College</u></b>	<b><u>Department Name</u></b>	<b><u>2004</u></b>	<b><u>2005</u></b>	<b><u>2006</u></b>	<b><u>2007</u></b>	<b><u>2008</u></b>
Business	Accounting, Fin, & Economics	52	32	39	46	42
	Mgmt, Marketing and Gen Bus	156	76	95	79	108
<b><i>College of Business Total</i></b>		<b>208</b>	<b>108</b>	<b>134</b>	<b>125</b>	<b>150</b>
Continuing Education	Continuing Education	9		3	3	
<b><i>Continuing Education Total</i></b>		<b>9</b>		<b>3</b>	<b>3</b>	
Education	Educ Leadership & Instr Tech	1	1	1	1	3
	Health & Human Performance	72	59	51	64	86
	Psychology	50	39	52	48	41
	Teacher Education	87	73	60	54	62
<b><i>College of Education Total</i></b>		<b>210</b>	<b>172</b>	<b>164</b>	<b>167</b>	<b>192</b>
Engineering & Engineering Technology	Engineering	93	92	85	100	92
	Engineering Technology	14	19	20	25	24
<b><i>College of Engineering &amp; Engineering Technology Total</i></b>		<b>107</b>	<b>111</b>	<b>105</b>	<b>125</b>	<b>116</b>
General & Basic Studies	Basic Studies	357	337	272	251	187
<b><i>General &amp; Basic Studies Total</i></b>		<b>357</b>	<b>337</b>	<b>272</b>	<b>251</b>	<b>187</b>
Liberal Arts	English & Foreign Languages	21	22	18	22	23
	History	17	13	16	13	11
	Mass Communication	39	26	28	17	35
	Performing Arts	32	21	26	22	38
	Social Sciences	83	47	42	37	54
	Visual Arts	33	18	23	28	20
<b><i>College of Liberal Arts Total</i></b>		<b>225</b>	<b>147</b>	<b>153</b>	<b>139</b>	<b>181</b>
Nursing	Undergraduate Nursing	268	213	212	212	197
<b><i>College of Nursing Total</i></b>		<b>268</b>	<b>213</b>	<b>212</b>	<b>212</b>	<b>197</b>
Science	Agriculture	47	42	36	42	69
	Biological & Envr Sciences	143	150	168	162	159
	Chemistry	21	29	16	28	39
	Math, Computer Science, & Stat	48	38	36	43	35
	Nutrition & Family Studies	27	20	15	4	13
	Physics	3	2	5		4
<b><i>College of Science Total</i></b>		<b>289</b>	<b>281</b>	<b>276</b>	<b>279</b>	<b>319</b>
<b>University Total</b>		<b>1,673</b>	<b>1,369</b>	<b>1,319</b>	<b>1,301</b>	<b>1,342</b>

## Fall 2008 First-Time Freshmen by Department and Major

<u>College/Department</u>	<u>Major</u>	<u>Full-Time</u>	<u>Part-Time</u>	<u>Total</u>
<b>Business</b>				
Accounting, Fin & Economics	Accounting	30	1	31
	Finance	11		11
<i>Department Total</i>		<i>41</i>	<i>1</i>	<i>42</i>
Mgmt, Marketing, & Gen Bus	Gen Business Administration	55	2	57
	Management	35		35
	Marketing	16		16
<i>Department Total</i>		<i>106</i>	<i>2</i>	<i>108</i>
<b>College of Business Total</b>		<b>147</b>	<b>3</b>	<b>150</b>
<b>Education</b>				
Educ Leadership & Instr Tech	Business Education – Grades 6-12	3		3
<i>Department Total</i>		<i>3</i>		<i>3</i>
Health & Human Performance	Athletic Training	15		15
	Health & Human Performance, General	50	1	51
	Health & Physical Education, Grades K–12	20		20
<i>Department Total</i>		<i>85</i>	<i>1</i>	<i>86</i>
Psychology	Psychology	40	1	41
<i>Department Total</i>		<i>40</i>	<i>1</i>	<i>41</i>
Teacher Education	Early Childhood Education–Grades PK–3	24	3	27
	Elementary Education – Grades 1–5	32		32
	Special Education, General	3		13
<i>Department Total</i>		<i>59</i>	<i>3</i>	<i>62</i>
<b>College of Education Total</b>		<b>187</b>	<b>5</b>	<b>192</b>
<b>Engineering &amp; Engineering Technology</b>				
Engineering	Engineering	87	5	92
<i>Department Total</i>		<i>87</i>	<i>5</i>	<i>92</i>
Technology	Engineering Technology	24		24
<i>Department Total</i>		<i>24</i>		<i>24</i>
<b>College of Engineering &amp; Engineering Technology Total</b>		<b>111</b>	<b>5</b>	<b>116</b>

## Fall 2008 First-Time Freshmen by Department and Major (continued)

<u>College/Department</u>	<u>Major</u>	<u>Full-Time</u>	<u>Part-Time</u>	<u>Total</u>
<b>General &amp; Basic Studies</b>				
Basic Studies	Basic Studies	167	10	177
	General Studies	9	1	10
<i>Department Total</i>		<i>176</i>	<i>11</i>	<i>187</i>
<b>General &amp; Basic Studies Total</b>		<b>176</b>	<b>11</b>	<b>187</b>
<b>Liberal Arts</b>				
English & Foreign Languages	English	8		8
	English Education Grades 6 – 12	15		15
<i>Department Total</i>		<i>23</i>		<i>23</i>
History	History	5		5
	Social Studies Education Grades 6 – 12	6		6
<i>Department Total</i>		<i>11</i>		<i>11</i>
Mass Communication	Mass Communication	35		35
<i>Department Total</i>		<i>35</i>		<i>35</i>
Performing Arts	Music Educ–Instrumental Grades K–12	17		17
	Music Education – Vocal Grades 6 – 12	8		8
	Music Performance	9		9
	Theatre Arts	4		4
<i>Department Total</i>		<i>38</i>		<i>38</i>
Social Sciences	Criminal Justice	28	2	30
	General Studies	1		1
	Government	8		8
	Paralegal Studies	6		6
	Sociology	7	2	9
<i>Department Total</i>		<i>50</i>	<i>4</i>	<i>54</i>
Visual Arts	Art	18		18
	Art Education – Grades K – 12	2		2
<i>Department Total</i>		<i>20</i>		<i>20</i>
<b>College of Liberal Arts Total</b>		<b>177</b>	<b>4</b>	<b>181</b>
<b>Nursing</b>				
Undergraduate Nursing	Nursing	194	3	197
<i>Department Total</i>		<i>194</i>	<i>3</i>	<i>197</i>
<b>College of Nursing Total</b>		<b>194</b>	<b>3</b>	<b>197</b>

### Fall 2008 First-Time Freshmen by Department and Major (continued)

<u>College/Department</u>	<u>Major</u>	<u>Full-Time</u>	<u>Part-Time</u>	<u>Total</u>
<b>Science</b>				
Agriculture	Agricultural Education, Grades 6 – 12	7		7
	Agricultural Sciences	50	1	51
	Wildlife Management	11		11
<i>Department Total</i>		<i>68</i>	<i>1</i>	<i>69</i>
Biological & Envr Sciences	Biological Science	88	2	90
	Biology Education – Grades 6 – 12	1	2	3
	Clinical Laboratory Science	6		6
	Environmental Science	8		8
	Radiologic Technology	49	3	52
<i>Department Total</i>		<i>152</i>	<i>7</i>	<i>159</i>
Chemistry	Chemistry	35	1	36
	Chemistry Education, Grades 6 – 12	3		3
<i>Department Total</i>		<i>38</i>	<i>1</i>	<i>39</i>
Math, Computer Sci and Stat	Computer Information Tech	5	2	7
	Computer Science	16		16
	Mathematics	2		2
	Mathematics Education – Grades 6-12	10		10
<i>Department Total</i>		<i>33</i>	<i>2</i>	<i>35</i>
Nutrition & Family Studies	Family & Consumer Sciences	12	1	13
<i>Department Total</i>		<i>12</i>	<i>1</i>	<i>13</i>
Physics	Physics	4		4
<i>Department Total</i>		<i>4</i>		<i>4</i>
<i>College of Science Total</i>		<i>307</i>	<i>12</i>	<i>319</i>
<b>University Total</b>		<b>1,299</b>	<b>43</b>	<b>1,342</b>

## Transfers

### Fall 2008 Transfer Enrollment by Status

	<u>Undergraduate</u>	<u>Graduate</u>	<u>Total</u>	<u>Percent</u>
Full-Time	287	5	292	81.8%
Part-Time	63	2	65	18.2%
<b>Total</b>	<b>350</b>	<b>7</b>	<b>357</b>	<b>100.0%</b>

### Fall 2008 Undergraduate Transfer Enrollment by College

	<u>Full-Time</u>	<u>Part-Time</u>	<u>Total</u>	<u>Percent</u>
Business	45	3	48	13.7%
Education	49	7	56	16.0%
Engineering & Engineering Technology	22	6	28	8.0%
General & Basic Studies	31	8	39	11.2%
Liberal Arts	33	7	40	11.4%
Nursing	54	24	78	22.3%
Science	53	8	61	17.4%
<b>Total</b>	<b>287</b>	<b>63</b>	<b>350</b>	<b>100.0%</b>

### Historical Fall Undergraduate Transfer Enrollment by College

	<u>2004</u>	<u>2005</u>	<u>2006</u>	<u>2007</u>	<u>2008</u>
Business	43	50	45	56	48
Continuing Education	2				
Education	60	57	51	42	56
Engineering & Engineering Technology	24	18	27	20	28
General & Basic Studies	34	37	32	23	39
Liberal Arts	45	47	40	36	40
Nursing	64	74	64	72	78
Science	66	55	62	74	61
<b>Total</b>	<b>338</b>	<b>338</b>	<b>321</b>	<b>323</b>	<b>350</b>



## Fall 2008 Undergraduate Transfers by College and Department

<u>College</u>	<u>Department</u>	<u>Full-Time</u>	<u>Part-Time</u>	<u>Total</u>
Business	Accounting, Fin & Economics	9	1	10
	Mgmt, Marketing, & Gen Bus	36	2	38
<b><i>College of Business Total</i></b>		<b>45</b>	<b>3</b>	<b>48</b>
Education	Health & Human Performance	22	2	24
	Psychology	9	2	11
	Teacher Education	18	3	21
<b><i>College of Education Total</i></b>		<b>49</b>	<b>7</b>	<b>56</b>
Engineering & Engineering Technology	Engineering	17	3	20
	Engineering Technology	5	3	8
<b><i>College of Engineering &amp; Engineering Technology Total</i></b>		<b>22</b>	<b>6</b>	<b>28</b>
General & Basic Studies	Basic Studies	31	8	39
<b><i>General &amp; Basic Studies Total</i></b>		<b>31</b>	<b>8</b>	<b>39</b>
Liberal Arts	English & Foreign Languages	1	2	3
	History	5	1	6
	Mass Communication	6		6
	Performing Arts	4		4
	Social Sciences	13	4	17
	Visual Arts	4		4
<b><i>College of Liberal Arts Total</i></b>		<b>33</b>	<b>7</b>	<b>40</b>
Nursing	Undergraduate Nursing	54	24	78
<b><i>College of Nursing Total</i></b>		<b>54</b>	<b>24</b>	<b>78</b>
Science	Agriculture	10		10
	Biological & Envr Sciences	22	6	28
	Chemistry	5	1	6
	Math, Computer Sci and Stat	9		9
	Nutrition & Family Studies	7		7
	Physics		1	1
<b><i>College of Science Total</i></b>		<b>53</b>	<b>8</b>	<b>61</b>
<b>University Total</b>		<b>287</b>	<b>63</b>	<b>350</b>

## Fall 2008 Undergraduate Transfers by Department and Major

<u>College/Department</u>	<u>Major</u>	<u>Full-Time</u>	<u>Part-Time</u>	<u>Total</u>
<b>Business</b>				
Accounting, Fin & Economics	Accounting	7	1	8
	Finance	2		2
<i>Department Total</i>		9	1	10
Mgmt, Marketing, & Gen Bus	Gen Business Administration	15		15
	Management	13	2	15
	Marketing	8		8
<i>Department Total</i>		36	2	38
<b>College of Business Total</b>		45	3	48
<b>Education</b>				
Health & Human Performance	Athletic Training	1		1
	Health & Human Performance, General	19	2	21
	Health & Physical Education, Grades K–12	2		2
<i>Department Total</i>		22	2	24
Psychology	Psychology	9	2	11
<i>Department Total</i>		9	2	11
Teacher Education	Early Childhood Education–Grades PK–3	8	2	10
	Elementary Education – Grades 1–5	10	1	11
<i>Department Total</i>		18	3	21
<b>College of Education Total</b>		49	7	56
<b>Engineering &amp; Engineering Technology</b>				
Engineering	Engineering	17	3	20
<i>Department Total</i>		17	3	20
Technology	Engineering Technology	5	3	8
<i>Department Total</i>		8	3	8
<b>College of Engineering &amp; Engineering Technology Total</b>		22	6	28
<b>General &amp; Basic Studies</b>				
Basic Studies	Basic Studies	167	10	177
	General Studies	9	1	10
<i>Department Total</i>		176	11	187
<b>General &amp; Basic Studies Total</b>		176	11	187

**Fall 2008 Undergraduate Transfers by Department and Major (continued)**

<b><u>College/Department</u></b>	<b><u>Major</u></b>	<b><u>Full-Time</u></b>	<b><u>Part-Time</u></b>	<b><u>Total</u></b>
<b>Liberal Arts</b>				
English & Foreign Languages	English	1	2	3
<i>Department Total</i>		<i>1</i>	<i>2</i>	<i>3</i>
History	History	2		2
	Liberal Studies	1	1	2
	Social Studies Education Grades 6 – 12	2		2
<i>Department Total</i>		<i>5</i>	<i>1</i>	<i>6</i>
Mass Communication	Mass Communication	5		5
	Speech	1		1
<i>Department Total</i>		<i>6</i>		<i>6</i>
Performing Arts	Music Educ–Instrumental Grades K–12	2		2
	Music Performance	1		1
	Theatre Arts	1		1
<i>Department Total</i>		<i>4</i>		<i>4</i>
Social Sciences	Criminal Justice	11	1	12
	Government	1	2	3
	Paralegal Studies		1	1
	Sociology	1		1
<i>Department Total</i>		<i>13</i>	<i>4</i>	<i>17</i>
Visual Arts	Art	3		3
	Art Education – Grades K – 12	1		1
<i>Department Total</i>		<i>4</i>		<i>4</i>
<b><i>College of Liberal Arts Total</i></b>		<b><i>33</i></b>	<b><i>7</i></b>	<b><i>40</i></b>
<b>Nursing</b>				
Undergraduate Nursing	Nursing	54	24	78
<i>Department Total</i>		<i>54</i>	<i>24</i>	<i>78</i>
<b><i>College of Nursing Total</i></b>		<b><i>54</i></b>	<b><i>24</i></b>	<b><i>78</i></b>

### Fall 2008 Undergraduate Transfers by Department and Major (continued)

<u>College/Department</u>	<u>Major</u>	<u>Full-Time</u>	<u>Part-Time</u>	<u>Total</u>
<b>Science</b>				
Agriculture	Agricultural Sciences	8		8
	Wildlife Management	2		2
<i>Department Total</i>		<i>10</i>		<i>10</i>
Biological & Envr Sciences	Biological Science	10	1	11
	Clinical Laboratory Science	2	1	3
	Environmental Science	5		5
	Radiologic Technology	5	4	9
<i>Department Total</i>		<i>22</i>	<i>6</i>	<i>28</i>
Chemistry	Chemistry	5		5
	Undeclared		1	1
<i>Department Total</i>		<i>5</i>	<i>1</i>	<i>6</i>
Math, Computer Sci and Stat	Computer Information Tech	1		1
	Computer Science	4		4
	Mathematics	2		2
	Mathematics Education – Grades 6-12	2		2
<i>Department Total</i>		<i>9</i>		<i>9</i>
Nutrition & Family Studies	Family & Consumer Sciences	7		7
<i>Department Total</i>		<i>7</i>		<i>7</i>
Physics	Physics		1	1
<i>Department Total</i>			<i>1</i>	<i>1</i>
<i>College of Science Total</i>		<i>53</i>	<i>8</i>	<i>61</i>
<b>University Total</b>		<b>287</b>	<b>63</b>	<b>350</b>

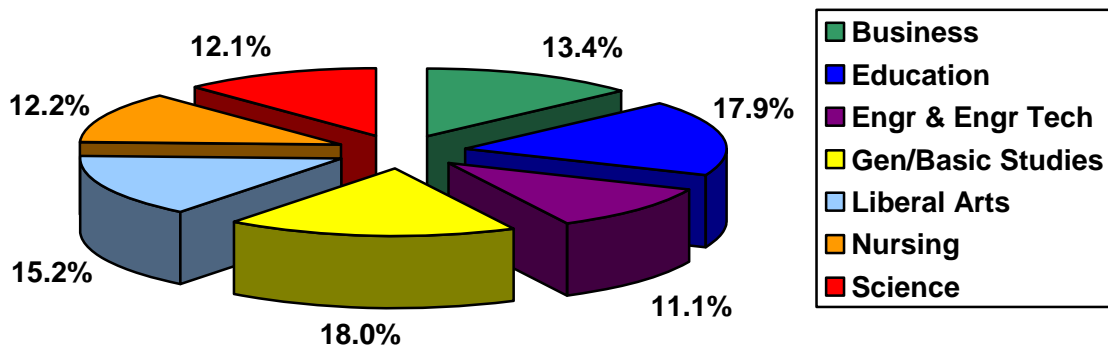
This Page is Intentionally Left Blank

**Degrees Conferred**  
**July 1, 2007 – June 30, 2008**

**Degrees Conferred by College and Level**

	<u>Associate</u>	<u>Bachelor's</u>	<u>Master's</u>	<u>Education Specialist</u>	<u>Total</u>
Business		171	26		197
Education		153	109	1	263
Engineering & Engineering Technology	41	56	66		163
General & Basic Studies	47	217			264
Liberal Arts	23	185	15		223
Nursing	29	128	22		179
Science	8	145	24		177
<b>Total</b>	<b>148</b>	<b>1,055</b>	<b>262</b>	<b>1</b>	<b>1,466</b>

**Degrees Conferred by College**



### Historical Degrees Conferred by College

	<b><u>03-04</u></b>	<b><u>04-05</u></b>	<b><u>05-06</u></b>	<b><u>06-07</u></b>	<b><u>07-08</u></b>
Business	235	237	206	230	197
Education	303	299	328	295	263
Engineering & Engineering Technology	135	87	133	125	163
General & Basic Studies	121	223	219	250	264
Liberal Arts	223	256	226	221	223
Nursing	112	88	132	163	179
Science	193	167	168	169	177
<b><i>Total</i></b>	<b><i>1,322</i></b>	<b><i>1,357</i></b>	<b><i>1,412</i></b>	<b><i>1,453</i></b>	<b><i>1,466</i></b>

### Historical Degrees Conferred by Level

	<b><u>03-04</u></b>	<b><u>04-05</u></b>	<b><u>05-06</u></b>	<b><u>06-07</u></b>	<b><u>07-08</u></b>
Associate	179	124	120	138	148
Bachelor	900	991	1,041	1,043	1,055
Master	227	235	248	268	262
Education Specialist	16	7	3	4	1
<b><i>Total</i></b>	<b><i>1,322</i></b>	<b><i>1,357</i></b>	<b><i>1,412</i></b>	<b><i>1,453</i></b>	<b><i>1,466</i></b>

### 2007-2008 Degrees Conferred by Gender and Ethnicity

	<u>Female</u>	<u>Male</u>	<u>Total</u>
Amer Indian/Alaska Native	5	3	8
Asian/Pacific Islander	7	6	13
Black	153	81	234
Foreign	38	83	121
Hispanic	13	5	18
White	693	373	1,066
Race/Ethnicity Unknown	3	3	6
<b>Total</b>	<b>912</b>	<b>554</b>	<b>1,466</b>

### 2007-2008 Degrees Conferred by Gender and Level

	<u>Associate</u>	<u>Bachelor's</u>	<u>Master's</u>	<u>Education Specialist</u>	<u>Total</u>
Female	84	681	146	1	912
Male	64	374	116		554
<b>Total</b>	<b>148</b>	<b>1,055</b>	<b>262</b>	<b>1</b>	<b>1,466</b>

### Historical Degrees Conferred by Gender

	<u>03-04</u>	<u>04-05</u>	<u>05-06</u>	<u>06-07</u>	<u>07-08</u>
Female	796	841	865	909	912
Male	526	516	547	544	554
<b>Total</b>	<b>1,322</b>	<b>1,357</b>	<b>1,412</b>	<b>1,453</b>	<b>1,466</b>



### 2007-2008 Degrees Conferred by Ethnicity and Level

	<u>Associate</u>	<u>Bachelor's</u>	<u>Master's</u>	<u>Education Specialist</u>	<u>Total</u>
Amer Indian/Alaska Native		8			8
Asian/Pacific Islander		6	7		13
Black	31	177	25	1	234
Foreign	3	23	95		121
Hispanic	1	13	4		18
White	112	824	130		1,066
Race/Ethnicity Unknown	1	4	1		6
<b>Total</b>	<b>148</b>	<b>1,055</b>	<b>262</b>	<b>1</b>	<b>1,466</b>

### Historical Degrees Conferred by Ethnicity

	<u>03-04</u>	<u>04-05</u>	<u>05-06</u>	<u>06-07</u>	<u>07-08</u>
Amer Indian/Alaska Native	8	6	10	8	8
Asian/Pacific Islander	10	7	12	14	13
Black	218	212	209	235	234
Foreign	61	74	95	96	121
Hispanic	14	16	23	12	18
White	1,010	1,038	1,059	1,083	1,066
Race/Ethnicity Unknown	1	4	4	5	6
<b>Total</b>	<b>1,322</b>	<b>1,357</b>	<b>1,412</b>	<b>1,453</b>	<b>1,466</b>

### Top 10 Bachelor's Degrees Conferred 2007–2008

	<b><u>Number of Degrees</u></b>
BGS General Studies	217
BSN Nursing	128
BS Accounting	50
BS Management	44
BS Engineering	41
BS Criminal Justice	36
BS Mass Communication	35
BS Marketing	34
BA Agricultural Sciences	34
BS Health & Human Performance, Gen	30

### Top 5 Associate Degrees Conferred 2007–2008

	<b><u>Number of Degrees</u></b>
AGS General Studies	47
AS Engineering Technology	41
ADN Nursing	29
AA Paralegal Studies	10
AS Computer Information Technology	7

### Top 5 Master's Degrees Conferred 2007–2008

	<b><u>Number of Degrees</u></b>
MEng Engineering	66
MBA Business Administration	26
MAT Secondary Education Grades 6-12	25
MSN Nursing	22
MAT Elementary Education Grades 1-5	15

**Student Credit Hours (SCH)  
Fall 2008 by Department and Level**

	<b>Lower UG</b>	<b>Upper UG</b>	<b>Graduate</b>	<b>Total</b>
Accounting, Fin & Econ	1,038	2,556	297	3,891
Agriculture	1,123	910	57	2,090
Biological & Envr Sciences	6,107	3,316	106	9,529
Chemistry	2,388	1,234	125	3,747
Educ Leadership & Instr Tech	654	366	1,026	2,046
Engineering	633	1,627	617	2,877
Engineering Technology	442	712	3	1,157
English & Foreign Languages	7,697*	2,171	339	10,207
Freshmen Foundations	1,347	4		1,351
General and Basic Studies	43	55		98
Graduate Nursing			607	607
Health & Human Performance	2,363	2,185	334	4,882
History	4,005	1,683	9	5,697
Mass Communications	2,514	1,577	15	4,106
Math, Comp Sci, & Stat	10,328**	3,324	458	14,110
Military Science	9	3	1	13
Mgmt, Marketing and Gen Bus	1,455	3,666	453	5,574
Nutrition and Family Studies	819	1,082	81	1,982
Performing Arts	1,940	1,256	49	3,245
Physics	1,067	670	6	1,743
Psychology	3,471	1,872	681	6,024
Social Sciences	4,087	3,820	15	7,922
Stdnt Tchng & Prof Educ Srv		333	144	477
Teacher Education	630	2,315	660	3,605
Undergraduate Nursing	350	6,143	11	6,504
Visual Arts	1,209	1,455	18	2,682
<b>Total</b>	<b>55,719</b>	<b>44,335</b>	<b>6,112</b>	<b>106,166</b>

\* Includes 980 developmental

\*\* Includes 1,556 developmental

Based on level of course.

Lower UG – 100 & 200 level courses

Upper UG – 300 & 400 level courses

Graduate – 500 level courses and up

### Historical Fall SCH's by Department

	<b><u>2004</u></b>	<b><u>2005</u></b>	<b><u>2006</u></b>	<b><u>2007</u></b>	<b><u>2008</u></b>
Accounting, Fin & Econ	4,818	4,443	4,308	3,852	3,891
Agriculture	2,212	2,185	1,973	1,992	2,090
Biological & Envr Sciences	9,718	10,107	8,719	9,845	9,529
Chemistry	4,132	4,911	4,404	3,743	3,747
Educ Leadership & Instr Tech	2,638	3,260	2,394	2,046	2,046
Engineering	2,340	2,352	2,467	3,129	2,877
Engineering Technology	893	1,038	1,143	1,129	1,157
English & Foreign Languages*	12,004	11,568	10,254	9,890	10,207
Freshmen Foundations					1,351
General and Basic Studies	1,670	1,382	1,351	1,276	98
Graduate Nursing **		366	355	578	607
Health & Human Performance	4,355	4,835	4,643	5,380	4,882
History	6,918	5,973	5,136	4,575	5,697
Honor's College*	45				
Mass Communications	3,782	3,732	3,811	3,923	4,106
Math, Comp Sci, & Stat	15,613	14,854	14,386	13,573	14,110
Military Science					13
Mgmt, Marketing and Gen Bus	5,877	5,520	5,565	5,433	5,574
Nursing**	4,231				
Nutrition and Family Studies	2,849	2,710	2,847	2,276	1,982
Performing Arts	4,350	4,577	4,429	3,395	3,245
Physics	2,076	2,075	2,150	1,881	1,743
Psychology	5,673	6,854	5,869	5,846	6,024
Social Sciences	9,646	9,758	8,578	8,106	7,922
Student Tchng & Prof Educ Srvc	933	909	726	636	477
Teacher Education	4,002	4,504	3,958	3,592	3,605
Undergraduate Nursing**		4,977	5,477	5,933	6,504
Visual Arts	2,454	2,730	2,676	2,476	2,682
<b><i>Total</i></b>	<b><i>113,229</i></b>	<b><i>115,620</i></b>	<b><i>107,619</i></b>	<b><i>104,505</i></b>	<b><i>106,166</i></b>

\* In Fall 2005 Honor's College was combined with English and Foreign Languages.

\*\* In Fall 2005 Nursing was divided into Graduate and Undergraduate Nursing Departments.

## Financial Aid

	<b><u>03-04</u></b>	<b><u>04-05</u></b>	<b><u>05-06</u></b>	<b><u>06-07</u></b>	<b><u>07-08</u></b>
Unduplicated Count of Students	10,096	10,558	10,393	9,828	9,776
Undergraduates Receiving Aid	6,372	6,907	6,702	6,201	6,400
% of Undergraduates Receiving Aid	75%	77%	75%	74%	77%
Amount of Undergraduate Aid	\$35,943,723	\$40,465,577	\$40,892,953	\$37,426,588	\$39,984,240
Graduates Receiving Aid	833	873	794	769	912
% of Graduates Receiving Aid	52%	54%	51%	52%	59%
Amount of Graduate Aid	\$4,833,171	\$5,263,199	\$5,550,945	\$4,545,992	\$5,615,722
Students Receiving Federal Aid	4,649	5,087	4,697	4,390	4,338
Amount of Federal Aid	\$26,568,930	\$29,261,039	\$29,7960,446	\$27,491,063	\$27,279,743

## Full-Time Average Annual Fees 2008-2009 (Fall and Spring Semesters)

	<b><u>Undergraduate</u> (15 hours)</b>	<b><u>Graduate</u> (9 hours)</b>
In-State Undergraduate Tuition & Fees	\$3,422	\$3,271
Out-of-State Undergraduate Tuition & Fees	\$9,488	\$9,337

## Student Charges 2008-2009 Academic Year

Room (based on semi-private dorm)	\$2,000
Board (average meal plan)	\$2,070

**Revenues**  
**Operating (Unrestricted) Fund**

	<b>Actual 2006-2007</b>	<b>Actual 2007-2008</b>	<b>Budgeted 2008-2009</b>
<b>Revenues by Source</b>			
State Funds	\$32,606,269	\$43,247,275	\$45,427,196
Self-Generated Funds	\$22,414,381	\$23,335,037	\$27,232,488
<b>Total Revenues</b>	<b>\$55,020,650</b>	<b>\$66,582,312</b>	<b>\$72,659,684</b>

**Expenditures**  
**Operating (Unrestricted) Fund**

	<b>Actual 2006-2007</b>	<b>Actual 2007-2008</b>	<b>Budgeted 2008-2009</b>
<b>Expenditures by Function</b>			
Instruction	\$23,918,616	\$29,240,459	\$32,104,294
Research	\$599,548	\$761,025	\$675,289
Academic Support	\$5,292,828	\$6,411,332	\$7,043,569
Student Services	\$3,484,472	\$4,365,230	\$5,049,333
Institutional Services	\$6,459,501	\$7,837,519	\$8,757,782
Scholarships/Fellowships	\$3,792,939	\$3,889,779	\$4,715,000
Plant Operations/Maintenance	\$7,282,332	\$8,767,408	\$8,283,368
Transfers out of agency	\$1,476,368	\$1,919,879	\$2,149,744
Athletics	\$2,714,046	\$3,333,682	\$3,825,305
Other		\$56,000	\$56,000
<b>Total Expenditures</b>	<b>\$55,020,650</b>	<b>\$66,582,312</b>	<b>\$72,659,684</b>

	<b>Actual 2006-2007</b>	<b>Actual 2007-2008</b>	<b>Budgeted 2008-2009</b>
<b>Expenditures by Expense Category</b>			
Salaries	\$29,213,220	\$34,617,280	\$38,164,787
Other Compensation	\$429,105	\$567,932	\$936,148
Related Benefits	\$9,201,240	\$10,858,469	\$12,012,221
Travel	\$213,392	\$406,338	\$758,735
Operating Services	\$3,395,885	\$4,510,722	\$4,966,822
Supplies	\$605,595	\$844,056	\$939,606
Professional Services	\$171,834	\$318,699	\$513,215
Other Charges	\$6,822,824	\$7,621,889	\$9,038,843
Interagency Transfers	\$1,476,368	\$1,919,879	\$2,149,744
General Acquisitions	\$1,385,931	\$2,219,785	\$1,938,063
Library Acquisitions	\$321,758	\$526,785	\$291,500
Major Repairs	\$1,783,498	\$2,170,478	\$950,000
<b>Total Expenditures</b>	<b>\$55,020,650</b>	<b>\$66,582,312</b>	<b>\$72,659,684</b>

## Faculty/Staff

### Fall 2008 Full-Time Faculty by Rank

	<b>Tenured</b>	<b>On tenure track</b>	<b>Not on tenure track</b>	<b>Total</b>	<b>Percent</b>
Professors	64		1	65	20.0%
Associate Professors	46	2	1	49	15.1%
Assistant Professors	45	97	8	150	46.1%
Instructors			61	61	18.8%
<b>Total</b>	<b>155</b>	<b>99</b>	<b>71</b>	<b>325</b>	<b>100.0%</b>

### Fall 2008 Full-Time Faculty by Highest Degree

	<b>Tenured</b>	<b>On tenure track</b>	<b>Not on tenure track</b>	<b>Total</b>	<b>Percent</b>
Bachelors			3	3	.9%
Masters	36	23	50	109	33.5%
Terminal Masters	7	6	9	22	6.8%
Doctorate	112	70	9	191	58.8%
<b>Total</b>	<b>155</b>	<b>99</b>	<b>71</b>	<b>325</b>	<b>100.0%</b>

### Fall 2008 Full-Time Faculty by Race and Gender

	<b>Men</b>	<b>Women</b>	<b>Total</b>	<b>Percent</b>
Asian/Pacific Islander	25	4	29	8.9%
Black, non-Hispanic	4	13	17	5.3%
Foreign		1	1	.3%
Hispanic	2		2	.6%
White, non-Hispanic	145	131	276	84.9%
<b>Total</b>	<b>176</b>	<b>149</b>	<b>325</b>	<b>100.0%</b>

### Full-Time Equivalent Faculty

<b>08-09</b>	362.3
<b>07-08</b>	368.7
<b>06-07</b>	339.3
<b>05-06</b>	343.0
<b>04-05</b>	343.2

### Student to Faculty Ratio\*

<b>Fall 2008</b>	19 to 1
<b>Fall 2007</b>	20 to 1
<b>Fall 2006</b>	21 to 1
<b>Fall 2005</b>	22 to 1

\* (Full-Time students + 1/3 Part-Time students) / (Full-Time faculty + 1/3 Part-Time faculty)

### Fall 2008 Employees by Occupational Activity

	<b>Full-Time</b>	<b>Part-Time</b>	<b>Total</b>	<b>Percent</b>
Primarily Instruction	325	109	434	46.2%
Executive/administrative/managerial	51		51	5.4%
Other professionals (support/service)	175	8	183	19.5%
Technical and paraprofessionals	49	2	51	5.4%
Clerical and secretarial	110	3	113	12.0%
Skilled crafts	21	1	22	2.3%
Service/Maintenance	86		86	9.2%
<b>Total</b>	<b>817</b>	<b>123</b>	<b>940</b>	<b>100.0%</b>

### Fall 2008 Employees by Race and Gender

	<b>Men</b>	<b>Women</b>	<b>Total</b>	<b>Percent</b>
American Indian/Alaska Native	1	2	3	.3%
Asian/Pacific Islander	28	7	35	3.7%
Black, non-Hispanic	59	89	148	15.7%
Foreign, Non-Resident		2	2	.2%
Hispanic	4	3	7	.8%
White, non-Hispanic	312	433	745	79.3%
<b>Total</b>	<b>404</b>	<b>536</b>	<b>940</b>	<b>100.0%</b>



## Facilities

	Owned	Leased	Total
Land Holdings	500.95 Acres	265.45 Acres	766.40 Acres
Building Gross Square Footage	1,407,857	344,096	1,751,953
Building Net Assignable Square Footage	983,420	265,289	1,248,709

## Net Assignable Space by Allocation Category

	Square Feet	% Total
Academic	500,539	55.1%
Administrative	63,114	6.9%
Athletics	51,643	5.7%
Auxiliary*	202,815	22.3%
Residential**	91,194	10.0%
<b>Total</b>	<b>909,305</b>	<b>100.0%</b>

\* Does not include 265,289 square feet for Burton Coliseum which is leased from Calcasieu Parish Police Jury and is used for basketball games and graduation twice a year.

\*\* Does not include 74,115 for Burton Dorm which is currently closed.