

FACT BOOK

2006-2007

PREPARED BY: OFFICE OF INSTITUTIONAL RESEARCH
WWW.MCNEESE.EDU/IR

SUCCEED

ENLIGHTEN

ADVANCE

CREATE

SUSTAIN

INQUIRE



McNeese
STATE UNIVERSITY

TABLE OF CONTENTS

History.....	1
Mission Statement.....	2
Institutional Goals.....	3
Accreditation	4
Organizational Chart.....	5
Inventory of Degree Programs	6
Enrollment.....	8
First-Time Freshman.....	25
Degrees Conferred	33
Student Credit Hours (SCH).....	36
Financial Aid	38
Annual Fees	38
Revenues	39
Expenditures.....	39
Facilities	40
Faculty/Staff	41

History

The opening session of Lake Charles Junior College began on September 11, 1939. The following fall, the school changed its name to John McNeese Junior College to honor John McNeese, a renowned Southwest Louisiana educator and the first superintendent of schools in Imperial Calcasieu Parish. In 1950 McNeese became a four-year college in its own right and came under the authority of the Louisiana Board of Education. Finally, in 1970, McNeese State University became the official name of the school.

McNeese achieved Commission on Colleges/Southern Association of Colleges and Schools accreditation in 1954 and maintains its regional accreditation status as a Level IV institution authorized to award associate, bachelor, master, and specialist degrees. The University also provides opportunities for continuing education in support of its mission to value lifelong learning. As a member of the University of Louisiana System and a selective admissions institution, McNeese offers degrees through six academic colleges: Business, Education, Engineering and Technology, Liberal Arts, Nursing, and Science. McNeese's athletic programs are NCAA-certified for competition at I-AA and I-A levels. The football team achieved national prominence when it advanced to the national playoffs in 1997 and 2002.

The McNeese State University campus in Lake Charles, Louisiana features 68 buildings on 500 acres dotted with live oak trees and azalea bushes. The McNeese community continues to use the three original structures - Kaufman Hall, Ralph O. Ward Memorial Gym (the Arena), and Francis G. Bulber Auditorium. Bulber Auditorium, a striking example of Art Deco architecture, is listed on the National Register of Historic Places.

McNeese State University upholds a long tradition of service to the Southwest Louisiana community and the nation. The University's motto of "Excellence with a Personal Touch" extends beyond the classroom to offering help to others in times of need. During World War II, the campus was the headquarters of the Louisiana Maneuvers, an extensive military exercise to prepare American soldiers for battle. In 1957, the McNeese community gave aid and comfort to the victims of Hurricane Audrey and served as the National Guard's base of rescue operations. Recently, McNeese provided shelter for New Orleans residents and university students fleeing Hurricane Katrina. McNeese faced one of its greatest challenges when Hurricane Rita struck in the fall of 2005. The storm caused devastating damage to campus facilities and infrastructure. The recovery effort after Hurricane Rita showed the community of Southwest Louisiana the high caliber of McNeese faculty, staff, and students in their commitment to complete the semester and move forward in support of the core values of academic excellence, student success, fiscal responsibility, and university/community alliances.

Mission Statement

McNeese State University, a selective admissions institution, provides education, research, and service that support our core values of academic excellence, student success, fiscal responsibility, and university-community alliances. The University's fundamental educational mission is to offer associate, baccalaureate, and specific graduate curricula distinguished by academic excellence. The University engages in collaborative ventures to benefit industry and to enhance economic development and cultural growth in this region and beyond.

The foundation for student success begins with faculty commitment to excellence in teaching, research, and creative and scholarly activity. At McNeese State University, a member of the University of Louisiana System, students cultivate skills for critical thinking and effective expression and gain an understanding of the global community. The learning and social environment integrates discipline-specific knowledge with the values of lifelong learning, ethical responsibility, and civic engagement.

Adopted by McNeese State University - 2/21/05

Approved by the Board of Supervisors of the University of Louisiana System - 4/29/05

Institutional Goals

Adopted 6/29/05

Revised 8/11/05

Academic Excellence

1. Emphasize excellence in instruction.
2. Develop programs that are viable, innovative, and relevant to market needs.
3. Infuse a global outlook and ethical standards in course content and curriculum development.
4. Uphold the commitment to regional and national program accreditation.
5. Encourage undergraduate and graduate research in appropriate disciplines.

Student Success

1. Foster a climate that enhances student learning, focuses on retention, values advising, and enriches the quality of campus-life.
2. Nurture an environment to support cultural diversity.
3. Present students opportunities for leadership.
4. Provide venues for learning to attract non-traditional students.
5. Provide an aesthetically-pleasing campus, functional facilities, and state-of-the-art equipment.

Fiscal Responsibility

1. Engage in continuous assessment, evaluation, and improvement.
2. Utilize the role of technology to increase the efficiency and effectiveness of campus operations.
3. Garner outside funding sources to support the University mission.
4. Capitalize of efficient use of resources.
5. Support efforts to obtain federal funding.

University-Community Alliances

1. Support mutually beneficial university/community collaborations.
2. Strengthen economic development through partnerships that provide technical assistance and information transfer to business and industry.
3. Enhance artistic, humanistic, and cultural opportunities in the area.
4. Retain certification and maintain competition in NCAA athletic programs
5. Partner with educational agencies to improve the quality of life in our region.

Accreditation

McNeese State University is accredited by the Commission on Colleges of the Southern Association of Colleges and Schools, 1866 Southern Lane, Decatur, Georgia 30033-4097, P-404.679.4500, www.sacscoc.org, to award associate, bachelor, master, and specialist degrees. A comprehensive list of other agencies included in the Board of Regents General Policy on Program Accreditation that have accredited or approved McNeese academic programs follows:

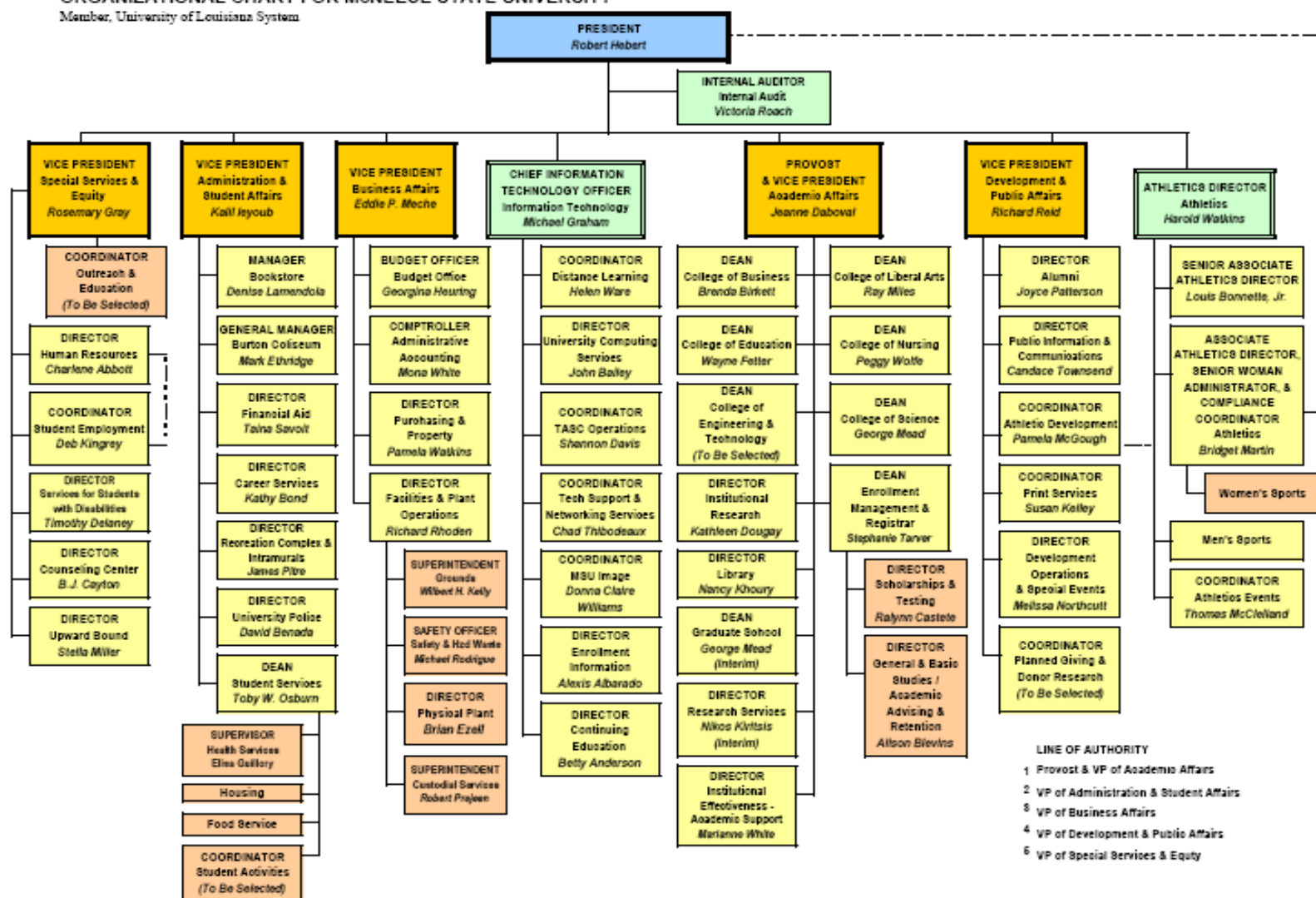
- AACSB International – The Association to Advance Collegiate Schools of Business International, 7777 South Harbor Island Blvd., Suite 750, Tampa, FL 33602-5730, P- (813) 769-6500, www.aacsb.edu/.
- AAFCS – American Association of Family and Consumer Sciences, 400 N. Columbus St., Suite 202, Alexandria, VA 22314, P- (703) 706-4600, www.aafcs.org.
- ACS – American Chemical Society, 1155 Sixteenth St. NW, Washington, DC 20036, P- (800) 227-5558, www.acs.org.
- CADE – Commission on Accreditation for Dietetics Education, American Dietetic Association, 120 S. Riverside Plaza, Suite 2000, Chicago, IL 60606-6995, P- (800) 877-1600, www.eatright.org.
- CAC/ABET Inc. – Computing Accreditation Commission of the Accreditation Board of Engineering and Technology, 111 Market Place, Suite 1050, Baltimore, MD 21202-4012, P- (410) 347.7700, www.abet.org.
- EAC/ABET Inc. – Engineering Accreditation Commission of the Accreditation Board of Engineering and Technology, 111 Market Place, Suite 1050, Baltimore, MD 21202-4012, P- (410) 347-7700, www.abet.org.
- JRCERT – Joint Review Committee on Education in Radiologic Technology, 20 N. Wacker Drive, Suite 2850, Chicago, IL 60606-3182, P- (312) 704-5300, www.jrcert.org.
- NAACLS – National Accrediting Agency for Clinical Laboratory Sciences, 8410 W. Bryn Mawr Ave., Suite 670, Chicago, IL 60631, P- (773) 714-8880, www.naacls.org.
- NASM – National Association of Schools of Music, 11250 Roger Bacon Drive, Suite 21, Reston, VA 20190-5248, P-(703) 437-0700, www.nasm.arts-accredit.org.
- NCATE – National Council for Accreditation of Teacher Education, 2010 Massachusetts Ave. NW, Suite 500, Washington, DC 20036, P- (202) 466-7496, www.ncate.org.
- NLNAC – National League for Nursing Accrediting Commission, 61 Broadway, New York, NY 10006, P- (800) 669-1656, www.nln.org.
- TAC/ABET Inc. – Technology Accreditation Commission of the Accreditation Board of Engineering and Technology, 111 Market Place, Suite 1050, Baltimore, MD 21202-4012, P- (410) 347-7700, www.abet.org.

Other agencies that have approved or certified programs include:

- AAHPERD/NASPE – American Alliance for Health, Physical Education, Recreation and Dance/National Association for Sport and Physical Education
- ACEI – Association for Childhood Education International
- CEC – Council for Exceptional Children
- ISTE – International Society for Technology Education
- BESE – Louisiana Board of Elementary and Secondary Education
- ELCC – Educational Leaders Constituency Consortium
- LSBN – Louisiana State Board of Nursing
- NAEYC – National Association for the Education of Young Children
- NCAA – National Collegiate Athletic Association
- NCSS – National Council for the Social Studies
- NCTE – National Council of Teachers of English
- NCTM – National Council of Teachers of Mathematics
- NSTA – National Science Teachers Association
- OAKE – Organization of American Kodály Educators

ORGANIZATIONAL CHART FOR McNEESE STATE UNIVERSITY

Member, University of Louisiana System



LINE OF AUTHORITY

- 1 Provost & VP of Academic Affairs
- 2 VP of Administration & Student Affairs
- 3 VP of Business Affairs
- 4 VP of Development & Public Affairs
- 5 VP of Special Services & Equity

Updated: July 19, 2006

Inventory of Degree Programs

General and Basic Studies

General Studies.....	A.G.S.
General Studies.....	B.G.S.

College of Business

Accounting.....	B.S.
Business Administration.....	M.B.A.
Finance.....	B.S.
General Business Administration.....	B.S.
Management.....	B.S.
Marketing.....	B.S.

Burton College of Education

Business Education—Grades 6-12.....	B.S.
Curriculum and Instruction	M.Ed
Early Childhood Education.....	A.S.
Early Childhood Education—Grades PK-3.....	B.S.
Education.....	M.Ed.
Educational Leadership.....	M.Ed.
Educational Leadership.....	Ed.S.
Educational Technology Leadership.....	M.Ed.
Elementary Education—Grades 1-5.....	B.S.
Elementary Education—Grades 1-5.....	M.A.T.
Health and Physical Education—Grades K-12.....	B.S.
Health and Human Performance, General	B.S.
Health and Human Performance	M.S.
Instructional Technology.....	M.S.
Psychology.....	B.S.
Psychology.....	M.A.
School Counseling.....	M.Ed.
Secondary Education—Grades 6-12.....	M.A.T.
Special Education, General.....	B.A.
Special Education Mild/Moderate—Grades 1-12.....	M.A.T.

College of Engineering & Technology

Engineering.....	B.S.
Engineering.....	M. Eng.
Engineering Technology.....	A.S.
Engineering Technology.....	B.S.

College of Liberal Arts

Art.....	B.A.
Art Education—Grades K-12.....	B.A.
Creative Writing.....	M.F.A.
Criminal Justice.....	B.S.
English.....	B.A.
English.....	M.A.
English Education—Grades 6-12.....	B.A.
Foreign Languages Education—Grades 6-12.....	B.A.
French.....	B.A.
Government.....	B.A.
History.....	B.A.
Liberal Studies.....	B.A.
Mass Communication.....	B.S.
Music Education— Instrumental Grades K-12	B.M.Ed.
Music Education—Vocal Grades K-12	B.M.Ed.
Music Education.....	M.M.Ed.
Music Performance.....	B.M.
Paralegal Studies.....	A.A.
Social Studies Education—Grades 6-12.....	B.A.
Sociology.....	B.A.
Spanish.....	B.A.
Speech.....	B.A.
Speech Education—Grades 6-12.....	B.S.
Theatre Arts.....	B.A.

College of Nursing

Nursing.....	A.D.N.
Nursing.....	B.S.N.
Nursing.....	M.S.N.

College of Science

Agricultural Education—Grades 6-12.....	B.S.
Agricultural Sciences.....	B.S.
Biological Science.....	B.S.
Biology Education—Grades 6-12.....	B.S.
Chemistry.....	B.S.
Chemistry Education—Grades 6-12.....	B.S.
Clinical Laboratory Science.....	B.S.
Computer Information Technology.....	A.S.
Computer Science.....	B.S.
Environmental and Chemical Sciences.....	M.S.
Environmental Science.....	B.S.
Environmental Science Education—Grades 6-12.....	B.S.
Family & Consumer Sciences.....	B.S.
Family & Consumer Sciences Education—Grades 6-12.....	B.S.
Mathematics Education—Grades 6-12.....	B.S.
Mathematical Sciences.....	M.S.
Mathematics.....	B.S.
Radiologic Technology.....	B.S.
Physics.....	B.S.
Wildlife Management.....	B.S.

Enrollment Fall 2006

Fall 2006 Enrollment by Level

	<u>Enrollment</u>	<u>Percent</u>
Undergraduate	7,336	87.9%
Graduate	1,007	12.1%
Total	8,343	100.0%

Fall 2006 Full-Time Equivalent Enrollment by Level

	<u>Enrollment</u>	<u>Percent</u>
Undergraduate (12 hours)	8,404.6	91.7%
Graduate (9 hours)	764.9	8.3%
Total	9,169.5	100.0%

Fall 2006 Enrollment by Rank

	<u>Enrollment</u>	<u>Percent</u>
Early Admissions	220	2.6%
Freshman	2,425	29.1%
Sophomore	1,403	16.8%
Junior	1,345	16.1%
Senior	1,932	23.2%
Masters Candidate	773	9.3%
Education Specialist	13	.2%
Special Graduate	221	2.6%
Non-Credit/Non-Degree	11	.1%
Total	8,343	100.0%

Fall 2006 Enrollment by Status

	<u>Undergraduate</u>	<u>Graduate</u>	<u>Total</u>	<u>Percent</u>
Full-Time	6,077	360	6,437	77.2%
Part-Time	1,259	647	1,906	22.8%
Total	7,336	1,007	8,343	100.0%

Fall 2006 Enrollment by Gender

	<u>Undergraduate</u>	<u>Graduate</u>	<u>Total</u>	<u>Percent</u>
Female	4,426	668	5,094	61.1%
Male	2,910	339	3,249	38.9%
Total	7,336	1,007	8,343	100.0%

Fall 2006 Enrollment by Ethnicity

	<u>Undergraduate</u>	<u>Graduate</u>	<u>Total</u>	<u>Percent</u>
Amer Indian/Alaskan	52	4	56	.7%
Asian/Pacific Islander	57	10	67	.8%
Black	1,349	156	1,505	18.0%
Foreign	159	145	304	3.7%
Hispanic	95	16	111	1.3%
Other / Not specified	35	5	40	.5%
White	5,589	671	6,260	75.0%
Total	7,336	1,007	8,343	100.0%

Fall 2006 Enrollment by Current Entry Status

	<u>Undergraduate</u>	<u>Graduate</u>	<u>Total</u>	<u>Percent</u>
Early Admissions	220	0	220	2.6%
Continuing	5,152	651	5,803	69.6%
First-Time Freshman	1,319	0	1,319	15.8%
New Graduate	0	224	224	2.7%
Re-Entry	324	115	439	5.3%
Transfer	321	17	338	4.0%
Total	7,336	1,007	8,343	100.0%

Fall 2006 Enrollment by Age

	<u>Undergraduate</u>	<u>Graduate</u>	<u>Total</u>	<u>Percent</u>
Under 18	265	0	265	3.2%
18 – 19	2,135	0	2,135	25.6%
20 – 21	2,043	8	2,051	24.6%
22 – 24	1,311	244	1,555	18.6%
25 – 29	669	274	943	11.3%
30 – 34	348	139	487	5.8%
35 – 39	242	115	357	4.3%
40 – 49	239	130	369	4.4%
50 – 64	81	89	170	2.1%
Over 64	3	8	11	.1%
Total	7,336	1,007	8,343	100.0%

Fall 2006 Average Age

	<u>Average Age</u>
All Students	24.6
First-Freshman	19.3
Undergraduate	23.4
Graduate	33.1

Fall 2006 Enrollment by Parish

<u>Parish</u>	<u>Enrollment</u>		<u>Parish</u>	<u>Enrollment</u>
Acadia	242		St John	6
Allen	298		St Landry	145
Ascension	17		St Martin	29
Assumption	2		St Mary	21
Avoyelles	6		St Tammany	30
Beauregard	496		Tangipahoa	14
Bossier	16		Terrebonne	15
Caddo	25		Union	2
Calcasieu	4,517		Vermilion	122
Caldwell	2		Vernon	162
Cameron	218		Washington	4
Claiborne	1		Webster	2
Concordia	3		West Baton Rouge	1
DeSoto	6		West Carroll	1
East Baton Rouge	51		West Feliciana	5
East Feliciana	6		Winn	2
Evangeline	120			
Franklin	2		Total Louisiana	7,552
Grant	5		% of Total Enrollment	90.5%
Iberia	37		Number of Parishes	59
Iberville	4		Five Parish Total	6,081
Jackson	3			
Jefferson	33			
Jefferson Davis	552			
Lafayette	121			
Lafourche	9			
LaSalle	5			
Lincoln	4			
Livingston	14			
Madison	1			
Morehouse	5			
Natchitoches	15			
Orleans	40			
Ouachita	13			
Plaquemines	5			
Pointe Coupee	4			
Rapides	63			
Richland	1			
Sabine	17			
St Bernard	1			
St Charles	8			
St Helena	1			
St James	2			

Fall 2006 Enrollment by State

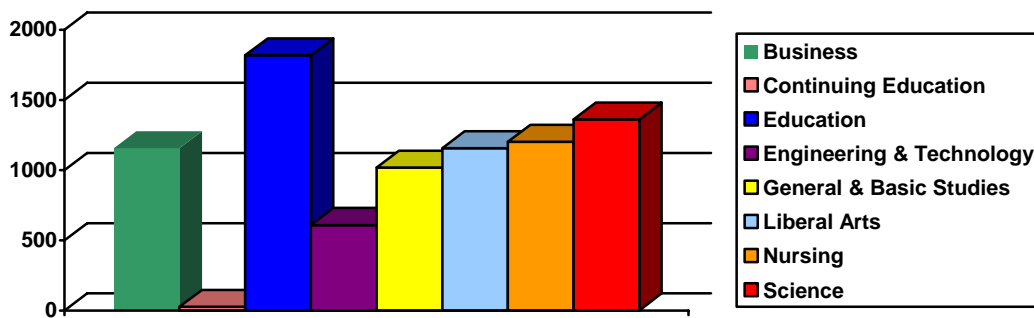
<u>State</u>	<u>Enrollment</u>
Alabama	5
Alaska	1
Arkansas	3
California	5
Colorado	5
Connecticut	3
Delaware	1
Florida	6
Georgia	4
Illinois	6
Indiana	1
Iowa	2
Kansas	3
Louisiana	7,552
Maryland	2
Massachusetts	4
Michigan	3
Minnesota	3
Mississippi	7
Missouri	3
New Jersey	6
New Mexico	3
New York	3
North Carolina	5
Ohio	4
Oklahoma	5
Oregon	2
Pennsylvania	3
South Carolina	2
Tennessee	7
Texas	368
Virginia	2
Washington	1
Wisconsin	4
Total	8,343
Total Out of State	482
% Out of State of Total Enrollment	5.8%
Number of States (Other than Louisiana)	33

Fall 2006 Enrollment by Foreign Country

<u>Country</u>	<u>Enrollment</u>		<u>Country</u>	<u>Enrollment</u>
Argentina	3		Turkey	14
Azerbaijan	7		United Kingdom (IS)	6
Bangladesh	2		Venezuela	2
Bolivia	8		Vietnam	7
British Virgin Islands	1			
Bulgaria	1		Total Foreign	309
Cambodia	1		% of Total Enrollment	3.7%
Cameroon	1		Number of Countries (Other than US)	46
Canada	3			
China	7			
Colombia	23			
Croatia	4			
Ecuador	9			
Ethiopia	1			
Honduras	3			
Iceland	3			
India	98			
Indonesia	7			
Ireland	2			
Jamaica	2			
Macedonia	1			
Mali	1			
Mexico	6			
Nepal	8			
Netherlands	2			
New Zealand	2			
Niger	1			
Nigeria	4			
Pakistan	3			
Peru	8			
Philippines	1			
Romania	1			
Russia	2			
Serbia	1			
Singapore	1			
Slovenia	1			
South Africa	2			
South Korea	11			
Sweden	2			
Taiwan	24			
Thailand	10			
Trinidad And Tobago	2			

Fall 2006 Enrollment by College

	<u>Undergraduate</u>	<u>Graduate</u>	<u>Total</u>	<u>Percent</u>
Business	1,071	85	1,156	13.9%
Continuing Education	10	16	26	.3%
Education	1,218	599	1,817	21.7%
Engineering & Technology	529	80	609	7.3%
General & Basic Studies	1,017		1,017	12.2%
Liberal Arts	1,103	53	1,156	13.9%
Nursing	1,133	69	1,202	14.4%
Science	1,255	105	1,360	16.3%
Total	7,336	1,007	8,343	100.0%



Historical Fall Undergraduate Enrollment by College

	<u>2002</u>	<u>2003</u>	<u>2004</u>	<u>2005</u>	<u>2006</u>
Business	1,120	1,172	1,194	1,088	1,071
Continuing Education	73	51	35	15	10
Education	1,535	1,440	1,405	1,340	1,218
Engineering & Technology	576	534	510	515	529
General & Basic Studies	564	769	982	1,206	1,017
Liberal Arts	1,282	1,284	1,288	1,216	1,103
Nursing	660	859	1,051	1,193	1,133
Science	1,200	1,221	1,259	1,274	1,255
Total	7,010	7,330	7,724	7,847	7,336

Historical Fall Graduate Enrollment by College

	<u>2002</u>	<u>2003</u>	<u>2004</u>	<u>2005</u>	<u>2006</u>
Business	91	95	81	87	85
Continuing Education	36	36	19	18	16
Education	591	637	550	712	599
Engineering & Technology	42	62	78	86	80
Graduate School	83	106	133		
Liberal Arts	49	45	47	54	53
Nursing	53	53	65	68	69
Science	74	83	87	120	105
Total	1,019	1,117	1,060	1,145	1,007

Fall 2006 Enrollment by College and Department

College	Department Name	Undergraduate	Graduate	Total
Business	Accounting, Fin, & Economics	370	4	374
	Mgmt, Marketing and Gen Bus	701	81	782
College of Business Total		1,071	85	1,156
Continuing Education	Continuing Education	10	16	26
Continuing Education Total		10	16	26
Education	Educ Leadership & Instr Tech	21	140	161
	Health & Human Performance	368	29	397
	Psychology	233	58	291
	Teacher Education	596	372	968
College of Education Total		1,218	599	1,817
Engineering & Technology	Engineering	361	80	441
	Technology	168		168
College of Engineering & Technology Total		529	80	609
General & Basic Studies	Basic Studies	1,017		1,017
General & Basic Studies Total		1,017		1,017
Liberal Arts	English & Foreign Languages	135	32	167
	History	129	2	131
	Mass Communication	186	1	187
	Performing Arts	110	10	120
	Social Sciences	369		369
	Visual Arts	174	8	182
College of Liberal Arts Total		1,103	53	1,156
Nursing	Graduate Nursing		69	69
	Undergraduate Nursing	1,133		1,133
College of Nursing Total		1,133	69	1,202
Science	Agriculture	214	7	221
	Biological & Envr Sciences	619	13	632
	Chemistry	102	23	125
	Family & Consumer Sciences	145	9	154
	Math, Computer Science, & Stat	164	53	217
	Physics	11		11
College of Science Total		1,255	105	1,360
University Total		7,336	1,007	8,343

Historical Undergraduate Enrollment by College and Department

College	Department Name	2002	2003	2004	2005	2006
Business	Accounting, Fin, & Economics	383	388	377	376	370
	Mgmt, Marketing and Gen Bus	737	784	817	712	701
College of Business Total		1,120	1,172	1,194	1,088	1,071
Continuing Education	Continuing Education	73	51	35	15	10
Continuing Education Total		73	51	35	15	10
Education	Educ Leadership & Instr Tech	12	9	19	20	21
	Health & Human Performance	353	356	398	396	368
	Psychology	242	244	252	257	233
	Teacher Education	928	831	736	667	596
College of Education Total		1,535	1,440	1,405	1,340	1,218
Engineering & Technology	Engineering	366	389	376	353	361
	Technology	210	145	134	162	168
College of Engineering & Technology Total		576	534	510	515	529
General & Basic Studies	Basic Studies	564	769	982	1,206	1,017
General & Basic Studies Total		564	769	982	1,206	1,017
Liberal Arts	English & Foreign Languages	54	79	117	138	135
	History	242	175	151	152	129
	Mass Communication*	218	214	230	209	186
	Music*	101	104			
	Performing Arts*			131	115	110
	Social Sciences	468	494	478	431	369
	Speech and Theatre Arts*	61	62			
	Visual Arts	138	156	181	171	174
College of Liberal Arts Total		1,282	1,284	1,288	1,216	1,103
Nursing	Undergraduate Nursing	660	859	1,051	1,193	1,133
College of Nursing Total		660	859	1,051	1,193	1,133
Science	Agriculture	210	213	214	211	214
	Biological & Envr Sciences	516	590	582	589	619
	Chemistry	36	45	84	106	102
	Family & Consumer Sciences	203	174	178	171	145
	Math, Computer Science, & Stat	228	191	193	188	164
	Physics	7	8	8	9	11
College of Science Total		1,200	1,221	1,259	1,274	1,255
University Total		7,010	7,330	7,724	7,847	7,336

*In the Fall 2004 Speech was combined with Mass Communications;
Music and Theatre Arts were combined into Performing Arts.

Historical Graduate Enrollment by College and Department

<u>College</u>	<u>Department Name</u>	<u>2002</u>	<u>2003</u>	<u>2004</u>	<u>2005</u>	<u>2006</u>
Business	Accounting, Fin, & Economics				5	4
	Mgmt, Marketing and Gen Bus	91	95	81	82	81
<i>College of Business Total</i>		91	95	81	87	85
Continuing Education	Continuing Education	36	36	19	18	16
<i>Continuing Education Total</i>		36	36	19	18	16
Education	Educ Leadership & Instr Tech	213	222	195	214	140
	Health & Human Performance	15	29	33	32	29
	Psychology	88	99	66	83	58
	Teacher Education	275	287	256	383	372
<i>College of Education Total</i>		591	637	550	712	599
Engineering & Technology	Engineering	42	62	78	86	80
<i>College of Engineering & Technology Total</i>		42	62	78	86	80
Graduate School	Graduate School	83	106	133		
<i>College of Graduate School Total</i>		83	106	133		
Liberal Arts	English & Foreign Languages	41	37	39	44	32
	History					2
	Music	8	8			1
	Performing Arts			8	7	10
	Visual Arts				3	8
<i>College of Liberal Arts Total</i>		49	45	47	54	53
Nursing	Graduate Nursing	53	53	65	68	69
<i>College of Nursing Total</i>		53	53	65	68	69
Science	Agriculture				3	7
	Biological & Envr Sciences	10	5	4	17	13
	Chemistry	6	4	1	23	23
	Family & Consumer Sciences	10	9	8	9	9
	Math, Computer Science, & Stat	37	39	40	68	53
	Science	11	26	34		
<i>College of Science Total</i>		74	83	87	120	105
University Total		1,019	1,117	1,060	1,145	1,007

Fall 2006 Enrollment by Department and Major

<u>College/Department</u>	<u>Major</u>	<u>Undergraduate</u>	<u>Graduate</u>	<u>Total</u>
Business				
Accounting, Fin & Economics	Accounting	288		288
	Finance	82		82
	Nondegree		4	4
<i>Department Total</i>		370	4	374
Mgmt, Marketing, & Gen Bus	Business Administration		74	74
	Gen Business Administration	284		284
	Management	243		243
	Marketing	174		174
	Nondegree		7	7
<i>Department Total</i>		701	81	782
College of Business Total		1,071	85	1,156
Continuing Education				
Continuing Education	EASE Program	10	16	26
<i>Department Total</i>		10	16	26
Continuing Education Total		10	16	26
Education				
Educ Leadership & Instr Tech	Administration & Supervision		38	38
	Business Education – Grades 6-12	21		21
	Educational Leadership		41	41
	Educational Technology		16	16
	Educational Technology Leadership		23	23
	Instructional Technology		20	20
	Nondegree		2	2
<i>Department Total</i>		21	140	161
Health & Human Performance	Health & Human Performance		26	26
	Health & Human Performance, Education	103		103
	Health & Human Performance, General	183		183
	Health & Physical Education, Grades K–12	82		82
	Nondegree		3	3
<i>Department Total</i>		368	29	397
Psychology	Nondegree		5	5
	Psychology	233	41	274
	School Counseling		12	12
<i>Department Total</i>		233	58	291

Fall 2006 Enrollment by Department and Major (continued)

<u>College/Department</u>	<u>Major</u>	<u>Undergraduate</u>	<u>Graduate</u>	<u>Total</u>
Teacher Education	Add-on Teacher Certification		42	42
	Alt Certification – Grades 1-12 Mild/Moderate Sp Ed		14	14
	Alt Certification – Grades K-12 Health & Physical Ed		8	8
	Alt Certification – Grades 1-5		15	15
	Alt Certification – Grade 6-12		11	11
	Alt Certification – Grades PK-3		4	4
	Certification – TEDU		2	2
	Curriculum and Instruction		17	17
	Early Childhood Education	27		27
	Early Childhood Education – Grades PK - 3	219		219
	Education		30	30
	Elementary Education	29		29
	Elementary Education – Grades 1–5	259	76	335
	Nondegree		24	24
	Secondary Education	15		15
	Secondary Education Grades 6-12		89	89
	Special Education, Mild/Mod Gr 1-12		40	40
	Special Education, General	47		47
<i>Department Total</i>		596	372	968
<i>College of Education Total</i>		1,218	599	1,817
Engineering & Technology				
Engineering	Engineering	361	78	439
	Nondegree		2	2
<i>Department Total</i>		361	80	441
Technology	Engineering Technology	168		168
<i>Department Total</i>		168		168
<i>College of Engineering & Technology Total</i>		529	80	609
General & Basic Studies				
Basic Studies	Basic Studies	521		521
	General Studies	496		496
<i>Department Total</i>		1,017		1,017
<i>General & Basic Studies Total</i>		1,017		1,017

Fall 2006 Enrollment by Department and Major (continued)

<u>College/Department</u>	<u>Major</u>	<u>Undergraduate</u>	<u>Graduate</u>	<u>Total</u>
Liberal Arts				
English & Foreign Languages	Creative Writing		16	16
	English	55	12	67
	English Education Grades 6 – 12	54		54
	Foreign Language Education Grades 6-12	11		11
	French	3		3
	Nondegree		4	4
	Spanish	12		12
<i>Department Total</i>		<i>135</i>	<i>32</i>	<i>167</i>
History	General Studies	5		5
	History	45		45
	Liberal Studies	27		27
	Nondegree		2	2
	Social Studies Education Grades 6 – 12	52		52
<i>Department Total</i>		<i>129</i>	<i>2</i>	<i>131</i>
Mass Communication	Mass Communication	175		175
	Nondegree		1	1
	Speech	10		10
	Speech Education Grades 6-12	1		1
<i>Department Total</i>		<i>186</i>	<i>1</i>	<i>187</i>
Performing Arts	Music Education	24	6	30
	Music Educ–Instrumental, Grades K–12	32		32
	Music Education – Vocal, Grades 6 – 12	9		9
	Nondegree		4	4
	Performance	31		31
	Theatre Arts	14		14
<i>Department Total</i>		<i>110</i>	<i>10</i>	<i>120</i>
Social Sciences	Criminal Justice	193		193
	General Studies	2		2
	Government	46		46
	Paralegal Studies	37		37
	Sociology	91		91
<i>Department Total</i>		<i>369</i>		<i>369</i>

Fall 2006 Enrollment by Department and Major (continued)

<u>College/Department</u>	<u>Major</u>	<u>Undergraduate</u>	<u>Graduate</u>	<u>Total</u>
Visual Arts	Alt Certification – Grades K-12 Art Ed		5	5
	Art	135		135
	Art Education	19		19
	Art Education – Grades K – 12	17		17
	General Studies	2		2
	Nondegree		3	3
	Undeclared	1		1
<i>Department Total</i>		<i>174</i>	<i>8</i>	<i>182</i>
<i>College of Liberal Arts Total</i>		<i>1,103</i>	<i>53</i>	<i>1,156</i>
Nursing				
Graduate Nursing	Nondegree		11	11
	Nursing		58	58
<i>Department Total</i>			<i>69</i>	<i>69</i>
Undergraduate Nursing	Nursing	1,133		1,133
<i>Department Total</i>		<i>1,133</i>		<i>1,133</i>
<i>College of Nursing Total</i>		<i>1,133</i>	<i>69</i>	<i>1,202</i>
Science				
Agriculture	Agricultural Education – Grades 6 – 12	6		6
	Agricultural Sciences	167		167
	Environmental & Chemical Sciences		7	7
	Wildlife Management	41		41
<i>Department Total</i>		<i>214</i>	<i>7</i>	<i>221</i>
Biological & Env Sciences	Biological Science	290		290
	Biology Education – Grades 6 – 12	15		15
	Clinical Laboratory Science	59		59
	Environmental & Chemical Sciences		9	9
	Environmental Science	17		17
	Environmental Science Education Grades 6-12	3		3
	Nondegree		4	4
	Radiologic Technology	235		235
<i>Department Total</i>		<i>619</i>	<i>13</i>	<i>632</i>

Fall 2006 Enrollment by Department and Major (continued)

<u>College/Department</u>	<u>Major</u>	<u>Undergraduate</u>	<u>Graduate</u>	<u>Total</u>
Chemistry	Chemistry	96		96
	Chemistry Education – Grades 6-12	6		6
	Environmental & Chemical Sciences		19	19
	Nondegree		4	4
<i>Department Total</i>		<i>102</i>	<i>23</i>	<i>125</i>
Family & Consumer Sciences	Dietetic Certification		8	8
	Family & Consumer Sciences Education Grades 6-12	7		7
	Family & Consumer Sciences	135		135
	Family/Consumer Sciences Education	3		3
	Nondegree		1	1
<i>Department Total</i>		<i>145</i>	<i>9</i>	<i>154</i>
Math, Computer Sci and Stat	Computer Information Tech	26		26
	Computer Science	78		78
	Mathematical Sciences		38	38
	Mathematics	16		16
	Mathematics Education – Grades 6-12	44		44
	Nondegree		15	15
<i>Department Total</i>		<i>164</i>	<i>53</i>	<i>217</i>
Physics	Physics	11		11
<i>Department Total</i>		<i>11</i>		<i>11</i>
<i>College of Science Total</i>		<i>1,255</i>	<i>105</i>	<i>1,360</i>
University Total		7,336	1,007	8,343

Historical Enrollment Data

<u>Fall</u>	<u>Under-graduate</u>	<u>Graduate</u>	<u>Total</u>		<u>Fall</u>	<u>Under-graduate</u>	<u>Graduate</u>	<u>Total</u>
2006	7,336	1,007	8,343		1970	4,844	750	5,594
2005	7,847	1,145	8,992		1969	4,568	582	5,150
2004	7,724	1,060	8,784		1968	4,618	472	5,090
2003	7,330	1,117	8,447		1967	4,234	308	4,542
2002	7,010	1,019	8,029		1966	3,983	333	4,316
2001	6,845	935	7,780		1965	3,512	295	3,807
2000	6,731	901	7,632		1964	3,149	211	3,360
1999	6,865	1,014	7,879		1963	2,663	164	2,827
1998	6,978	1,017	7,995		1962	2,999	132	3,131
1997	7,050	1,087	8,137		1961	2,848	98	2,946
1996	7,063	1,024	8,087		1960	2,697		2,697
1995	7,381	1,063	8,444		1959	2,502		2,502
1994	7,658	1,071	8,729		1958	2,444		2,444
1993	7,347	1,057	8,404		1957	2,024		2,024
1992	7,316	1,158	8,474		1956	1,916		1,916
1991	6,818	1,013	7,831		1955	1,661		1,661
1990	6,662	1,062	7,724		1954	1,367		1,367
1989	6,557	1,022	7,579		1953	1,192		1,192
1988	6,383	1,040	7,423		1952	993		993
1987	6,457	1,036	7,493		1951	905		905
1986	6,430	950	7,380		1950	501		501
1985	6,648	1,176	7,824		1949	397		397
1984	6,645	1,336	7,981		1948	575		575
1983	6,491	1,535	8,026		1947	615		615
1982	5,888	1,463	7,351		1946	640		640
1981	5,461	1,556	7,017		1945	233		233
1980	4,700	691	5,391		1944	131		131
1979	4,435	721	5,156		1943	146		146
1978	4,626	750	5,376		1942	169		169
1977	4,883	642	5,525		1941	223		223
1976	5,048	758	5,806		1940	242		242
1975	5,058	955	6,013		1939	254		254
1974	4,841	845	5,686					
1973	4,922	915	5,837					
1972	5,226	959	6,185					
1971	5,067	958	6,025					
1970	4,844	750	5,594					

First-Time Freshman

Fall 2006 First-Time Freshman by Status

	<u>Total</u>	<u>Percent</u>
Full-Time	1,276	96.7%
Part-Time	43	3.3%
<i>Total</i>	<i>1,319</i>	<i>100.0</i>

Fall 2006 First-Time Freshman by Gender

	<u>Full-Time</u>	<u>Part-Time</u>	<u>Total</u>	<u>Percent</u>
Female	743	24	767	58.2%
Male	533	19	552	41.8%
<i>Total</i>	<i>1,276</i>	<i>43</i>	<i>1,319</i>	<i>100.0%</i>

Fall 2006 First-Time Freshman by Ethnicity

	<u>Full-Time</u>	<u>Part-Time</u>	<u>Total</u>	<u>Percent</u>
Amer Indian/Alaskan	8		8	.6%
Asian/Pacific Islander	13	1	14	1.1%
Black	206	10	216	16.4%
Foreign	31		31	2.3%
Hispanic	16		16	1.2%
Other	5		5	.4%
White	997	32	1,029	78.0%
<i>Total</i>	<i>1,276</i>	<i>43</i>	<i>1,319</i>	<i>100.0%</i>

Fall 2006 First-Time Freshman Admissions

	<u>Men</u>	<u>Women</u>	<u>Total</u>
Applied	884	1,333	2,217
Accepted	702	1,040	1,742
Enrolled Full Time	533	743	1,276
Enrolled Part Time	17	23	40

Fall 2006 First-Time Freshman by Parish, State and Country

Parish	Enrollment	State	Enrollment	Country	Enrollment
Acadia	23	Colorado	1	Cambodia	1
Allen	64	Georgia	1	Canada	2
Ascension	2	Illinois	1	China	1
Beauregard	93	Maryland	1	Colombia	1
Bossier	2	Michigan	1	Croatia	1
Caddo	3	Mississippi	1	Ecuador	2
Calcasieu	755	New Jersey	3	Honduras	2
Cameron	38	New York	1	Iceland	1
Concordia	2	Ohio	2	India	2
DeSoto	2	Tennessee	1	Mexico	2
East Baton Rouge	6	Texas	70	Nepal	3
Evangeline	13			Nigeria	1
Grant	1			Peru	2
Iberia	2			Russia	2
Jackson	1			Sweden	1
Jefferson	5			Taiwan	1
Jefferson Davis	85			Thailand	3
Lafayette	13			Trinidad and Tobago	1
Lafourche	1			Turkey	3
Livingston	2				
Morehouse	1				
Orleans	5				
Pointe Coupee	2				
Rapides	5				
Richland	1				
Sabine	5				
St Charles	1				
St James	1				
St Landry	12				
St Martin	2				
St Mary	4				
St Tammany	1				
Tangipahoa	1				
Vermilion	13				
Vernon	34				
Washington	1				
West Feliciana	2				
Total Louisiana	1,204	Total Out of State	83	Total Foreign	32
% of Total FTF	91.3%	% of Total FTF	6.3%	% of Total FTF	2.4%
Number of Parishes	37	Number of States	11	Number of Countries	19
Five Parish Total	1,035	(Other than Louisiana)		(Other than USA)	

Fall 2006 First-Time Freshman Enrollment by College

	<u>Total</u>	<u>Percent</u>
Business	134	10.2%
Continuing Education	3	.2%
Education	164	12.4%
Engineering & Technology	105	8.0%
General & Basic Studies	272	20.6%
Liberal Arts	153	11.6%
Nursing	212	16.1%
Science	276	20.9%
<i>Total</i>	<i>1,319</i>	<i>100.0%</i>

Historical Fall First-Time Freshman Enrollment by College

	<u>2002</u>	<u>2003</u>	<u>2004</u>	<u>2005</u>	<u>2006</u>
Business	151	180	208	108	134
Continuing Education	18	7	9		3
Education	215	188	210	172	164
Engineering & Technology	98	113	107	111	105
General & Basic Studies	313	361	357	337	272
Liberal Arts	197	206	225	147	153
Nursing	157	211	268	213	212
Science	269	304	289	281	276
<i>Total</i>	<i>1,418</i>	<i>1,570</i>	<i>1,673</i>	<i>1,369</i>	<i>1,319</i>

First-Time Freshman by College and Department

<u>College</u>	<u>Department</u>	<u>Total</u>
Business	Accounting, Fin & Economics	39
	Mgmt, Marketing, & Gen Bus	95
<i>College of Business Total</i>		134
Continuing Education	Continuing Education	3
<i>Continuing Education Total</i>		3
Education	Educ Leadership & Instr Tech	1
	Health & Human Performance	51
	Psychology	52
	Teacher Education	60
<i>College of Education Total</i>		164
Engineering & Technology	Engineering	85
	Technology	20
<i>College of Engineering & Technology Total</i>		105
General & Basic Studies	Basic Studies	272
<i>General & Basic Studies Total</i>		272
Liberal Arts	English & Foreign Languages	18
	History	16
	Mass Communication	28
	Performing Arts	26
	Social Sciences	42
	Visual Arts	23
<i>College of Liberal Arts Total</i>		153
Nursing	Undergraduate Nursing	212
<i>College of Nursing Total</i>		212
Science	Agriculture	36
	Biological & Envr Sciences	168
	Chemistry	16
	Family & Consumer Sciences	15
	Math, Computer Sci and Stat	36
	Physics	5
<i>College of Science Total</i>		276
University Total		1,319

Historical First-Time Freshman Enrollment by College and Department

College	Department Name	2002	2003	2004	2005	2006
Business	Accounting, Fin, & Economics	49	49	52	32	39
	Mgmt, Marketing and Gen Bus	102	131	156	76	95
College of Business Total		151	180	208	108	134
Continuing Education	Continuing Education	18	7	9		3
Continuing Education Total		18	7	9		3
Education	Educ Leadership & Instr Tech		1	1	1	1
	Health & Human Performance	57	59	72	59	51
	Psychology	33	51	50	39	52
	Teacher Education	125	77	87	73	60
College of Education Total		215	188	210	172	164
Engineering & Technology	Engineering	82	104	93	92	85
	Technology	16	9	14	19	20
College of Engineering & Technology Total		98	113	107	111	105
General & Basic Studies	Basic Studies	313	361	357	337	272
General & Basic Studies Total		313	361	357	337	272
Liberal Arts	English & Foreign Languages	8	12	21	22	18
	History	29	22	17	13	16
	Mass Communication*	45	40	39	26	28
	Music*	29	29			
	Performing Arts*			32	21	26
	Social Sciences	58	68	83	47	42
	Speech and Theatre Arts*	8	7			
	Visual Arts	20	28	33	18	23
College of Liberal Arts Total		197	206	225	147	153
Nursing	Undergraduate Nursing	157	211	268	213	212
College of Nursing Total		157	211	268	213	212
Science	Agriculture	43	49	47	42	36
	Biological & Envr Sciences	139	183	143	150	168
	Chemistry	10	11	21	29	16
	Family & Consumer Sciences	28	12	27	20	15
	Math, Computer Science, & Stat	47	47	48	38	36
	Physics	2	2	3	2	5
College of Science Total		269	304	289	281	276
University Total		1,418	1,570	1,673	1,369	1,319

*In the Fall 2004 Speech was combined with Mass Communications;
Music and Theatre Arts were combined into Performing Arts.

First-Time Freshman by Department and Major

<u>College/Department</u>	<u>Major</u>	<u>Total</u>
Business		
Accounting, Fin & Economics	Accounting	35
	Finance	4
<i>Department Total</i>		39
Mgmt, Marketing, & Gen Bus	Gen Business Administration	57
	Management	24
	Marketing	14
<i>Department Total</i>		95
College of Business Total		134
Continuing Education		
Continuing Education	EASE Program	3
<i>Department Total</i>		3
Continuing Education Total		3
Education		
Educ Leadership & Instr Tech	Business Education – Grades 6-12	1
<i>Department Total</i>		1
Health & Human Performance	Health & Human Performance, General	28
	Health & Physical Education, Grades K–12	23
<i>Department Total</i>		51
Psychology	Psychology	52
<i>Department Total</i>		52
Teacher Education	Early Childhood Education–Grades PK–3	14
	Elementary Education – Grades 1–5	43
	Special Education, General	3
<i>Department Total</i>		60
College of Education Total		164
Engineering & Technology		
Engineering	Engineering	85
<i>Department Total</i>		85
Technology	Engineering Technology	20
<i>Department Total</i>		20
College of Engineering & Technology Total		105

First-Time Freshman by Department and Major (continued)

<u>College/Department</u>	<u>Major</u>	<u>Total</u>
General & Basic Studies		
Basic Studies	Basic Studies	242
	General Studies	30
<i>Department Total</i>		272
General & Basic Studies Total		272
Liberal Arts		
English & Foreign Languages	English	6
	English Education Grades 6 – 12	11
	Spanish	1
<i>Department Total</i>		18
History	General Studies	1
	History	4
	Liberal Studies	3
	Social Studies Education Grades 6 – 12	8
<i>Department Total</i>		16
Mass Communication	Mass Communication	27
	Speech	1
<i>Department Total</i>		28
Performing Arts	Music Educ–Instrumental Grades K–12	17
	Music Education – Vocal Grades 6 – 12	7
	Performance	2
<i>Department Total</i>		26
Social Sciences	Criminal Justice	17
	Government	13
	Paralegal Studies	4
	Sociology	8
<i>Department Total</i>		42
Visual Arts	Art	20
	Art Education – Grades K – 12	3
<i>Department Total</i>		23
College of Liberal Arts Total		153
Nursing		
Undergraduate Nursing	Nursing	212
<i>Department Total</i>		212
College of Nursing Total		212

First-Time Freshman by Department and Major (continued)

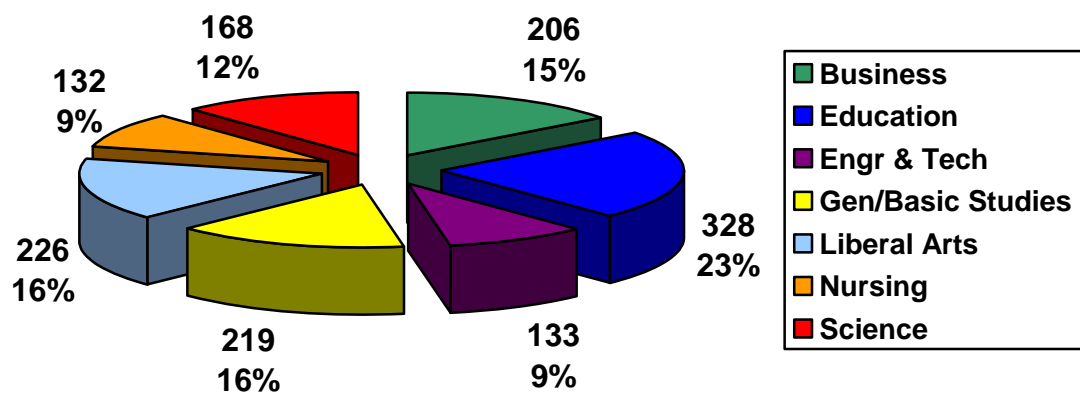
<u>College/Department</u>	<u>Major</u>	<u>Total</u>
Science		
Agriculture	Agricultural Education – Grades 6 – 12	1
	Agricultural Sciences	29
	Wildlife Management	6
<i>Department Total</i>		36
Biological & Envr Sciences	Biological Science	103
	Biology Education – Grades 6 – 12	2
	Clinical Laboratory Science	4
	Environmental Science	3
	Radiologic Technology	56
<i>Department Total</i>		168
Chemistry	Chemistry	16
<i>Department Total</i>		16
Family & Consumer Sciences	Family & Consumer Sciences Education Grades 6-12	1
	Family & Consumer Sciences	14
<i>Department Total</i>		15
Math, Computer Sci and Stat	Computer Information Tech	2
	Computer Science	22
	Mathematics	6
	Mathematics Education – Grades 6-12	6
<i>Department Total</i>		36
Physics	Physics	5
<i>Department Total</i>		5
College of Science Total		276
University Total		1,319

Degrees Conferred
July 1, 2005 – June 30, 2006

Degrees Conferred by College and Level

	<u>Associate</u>	<u>Bachelor's</u>	<u>Master's</u>	<u>Education Specialist</u>	<u>Total</u>
Business		187	19		206
Education	8	183	134	3	328
Engineering & Technology	28	60	45		133
General & Basic Studies	33	186			219
Liberal Arts	15	193	18		226
Nursing	27	96	9		132
Science	9	136	23		168
Total	120	1,041	248	3	1,412

Degrees Conferred by College



Historical Degrees Conferred by College

	<u>01-02</u>	<u>02-03</u>	<u>03-04</u>	<u>04-05</u>	<u>05-06</u>
Business	186	197	235	237	206
Education	329	339	303	299	328
Engineering & Technology	111	113	135	87	133
General & Basic Studies		4	121	223	219
Liberal Arts	273	294	223	256	226
Nursing	91	76	112	88	132
Science	162	195	193	167	168
<i>Total</i>	<i>1,152</i>	<i>1,218</i>	<i>1,322</i>	<i>1,357</i>	<i>1,412</i>

Historical Degrees Conferred by Level

	<u>01-02</u>	<u>02-03</u>	<u>03-04</u>	<u>04-05</u>	<u>05-06</u>
Associate	171	159	179	124	120
Bachelor	785	865	900	991	1,041
Master	187	182	227	235	248
Education Specialist	9	12	16	7	3
<i>Total</i>	<i>1,152</i>	<i>1,218</i>	<i>1,322</i>	<i>1,357</i>	<i>1,412</i>

Top 10 Bachelor's Degrees Conferred 2005–2006

	<u>Number of Degrees</u>
BGS General Studies	189
BSN Nursing	96
BS Accounting	54
BS Management	53
BS Psychology	45
BS Criminal Justice	45
BS Engineering	45
BS Mass Communications	38
BA Elementary Education	37
BS Family/Consumer Sciences / BS Marketing	34

Top 5 Associate Degrees Conferred 2005–2006

	<u>Number of Degrees</u>
AGS General Studies	38
ADN Nursing	27
AS Engineering Technology	26
AA Paralegal Studies	10
AS Computer Information Technology	9

Top 5 Master's Degrees Conferred 2005–2006

	<u>Number of Degrees</u>
MEng Engineering	45
MEd Educational Technology	35
MEd Administration and Supervision	34
MEd Education	22
MBA Business Administration	19

**Student Credit Hours (SCH)
Fall 2006 by Department and Level**

	Lower UG	Upper UG	Graduate	Total
Accounting, Fin & Econ	1,197	2,871	240	4,308
Agriculture	924	1,006	43	1,973
Biological & Envr Sciences	5,120	3,421	178	8,719
Basic Studies	1,324	27	0	1,351
Chemistry	2,805	1,437	162	4,404
Educ Leadership & Instr Tech	775	407	1,212	2,394
English & Foreign Languages	7,623*	2,298	333	10,254
Engineering	487	1,286	694	2,467
Family & Consumer Science	1,071	1,686	90	2,847
Health & Human Performance	2,079	2,240	324	4,643
History	3,711	1,410	15	5,136
Math, Comp Sci, & Stat	10,354**	3,330	702	14,386
Mass Communications	2,170	1,635	6	3,811
Mgmt, Marketing and Gen Bus	1,164	3,981	420	5,565
Graduate Nursing	0	0	355	355
Performing Arts	2,712	1,650	67	4,429
Physics	1,270	849	31	2,150
Psychology	3,396	1,818	655	5,869
Social Sciences	4,290	4,252	36	8,578
Technology	476	661	6	1,143
Teacher Education	879	2,058	1,021	3,958
TEDU Admissions/Field Exper	0	564	162	726
Undergraduate Nursing	212	5,205	60	5,477
Visual Arts	1,173	1,431	72	2,676
Total	55,212	45,523	6,884	107,619

* Includes 996 developmental

** Includes 1,612 developmental

Historical Fall SCH's by Department

	<u>2002</u>	<u>2003</u>	<u>2004</u>	<u>2005</u>	<u>2006</u>
Accounting, Fin & Econ	4,689	5,115	4,818	4,443	4,308
Agriculture	1590	1,980	2,212	2,185	1,973
Biological & Envr Sciences	8436	8,724	9,718	10,107	8,719
Basic Studies	1381	1,554	1,670	1,382	1,351
Chemistry	3390	4,220	4,132	4,911	4,404
Educ Leadership & Instr Tech	2457	2,754	2,638	3,260	2,394
English & Foreign Languages	11251	11,186	12,004	11,568	10,254
Engineering	1993	2,247	2,340	2,352	2,467
Family & Consumer Science	1750	2,121	2,849	2,710	2,847
Health & Human Performance	4009	4,087	4,355	4,835	4,643
History	5073	6,018	6,918	5,973	5,136
Honor's College	45	47	45		
Math, Comp Sci, & Stat	15145	15,111	15,613	14,854	14,386
Mass Communications	1075	1,277	3,782	3,732	3,811
Mgmt, Marketing and Gen Bus	5892	5,898	5,877	5,520	5,565
Music	2362	2,622			
Nursing	2652	3,674	4,231		
Graduate Nursing				366	355
Performing Arts			4,350	4,577	4,429
Physics	1969	2,158	2,076	2,075	2,150
Psychology	6403	6,260	5,673	6,854	5,869
Social Sciences	9383	9,078	9,646	9,758	8,578
Speech and Theatre Arts	2781	2,791			
Technology	1256	870	893	1,038	1,143
Teacher Education	6219	4,317	4,002	4,504	3,958
TEDU Admissions/Field Exper		786	933	909	726
Undergraduate Nursing				4,977	5,477
Visual Arts	1896	2,046	2,454	2,730	2,676
<i>Total</i>	<i>103,097</i>	<i>106,941</i>	<i>113,229</i>	<i>115,620</i>	<i>107,619</i>

Financial Aid

	<u>03-04</u>	<u>04-05</u>	<u>05-06</u>
Undergraduates Receiving Aid	75%	77%	75%
Amount of Undergraduate Aid	\$36 Million	\$40.5 Million	\$40.9 Million
Graduates Receiving Aid	52%	54%	51%
Amount of Graduate Aid	\$5 Million	\$5.3 Million	\$5.6 Million

Annual Fees 2006-2007 (Fall and Spring Semesters)

	<u>Undergraduate</u> <u>(12 hours)</u>	<u>Graduate</u> <u>(9 hours)</u>
In-State Undergraduate Tuition & Fees	\$3,217	\$3,097
Out-of-State Undergraduate Tuition & Fees	\$9,283	\$9,163
Book & Supplies (Estimated)	\$1,000	\$1,000
Room (Estimated based on semi-private dorm)	\$1,370	\$1,370
Board (Estimated based on declining balance plan)	\$1,896	\$1,896

Revenues
Operating (Unrestricted) Fund

	Actual 2004-2005	Actual 2005-2006	Budgeted 2006-2007
Revenues by Source			
State Funds	\$26,784,528	\$27,162,866	\$30,394,000
Self-Generated Funds	\$22,726,512	\$24,317,365	\$25,571,413
Total Revenues	\$49,511,040	\$51,480,231	\$55,965,413

Expenditures
Operating (Unrestricted) Fund

	Actual 2004-2005	Actual 2005-2006	Budgeted 2006-2007
Expenditures by Function			
Instruction	\$23,340,252	\$23,817,790	\$25,867,238
Research	\$836,375	\$527,348	\$625,759
Academic Support	\$4,773,602	\$5,274,181	\$5,400,182
Student Services	\$3,354,601	\$3,098,999	\$3,587,245
Institutional Services	\$5,410,460	\$5,808,917	\$6,846,517
Scholarships/Fellowships	\$3,377,596	\$3,633,503	\$3,695,228
Plant Operations/Maintenance	\$4,990,776	\$5,372,606	\$6,101,883
Transfers out of agency	\$986,588	\$1,277,977	\$1,127,315
Athletics	\$2,440,791	\$2,668,910	\$2,714,046
Expenditures by Expense Category			
Salaries	\$27,960,521	\$27,858,314	\$30,114,358
Other Compensation	\$516,437	\$326,169	\$578,748
Related Benefits	\$8,381,179	\$9,111,575	\$10,362,552
Travel	\$210,863	\$131,804	\$248,240
Operating Services	\$2,874,263	\$2,885,665	\$3,513,558
Supplies	\$540,903	\$555,554	\$641,437
Professional Services	\$112,597	\$145,773	\$216,414
Other Charges	\$6,225,403	\$6,575,020	\$6,906,832
Debt Services	\$32,458	\$0	\$0
Interagency Transfers	\$986,588	\$1,277,977	\$1,127,315
General Acquisitions	\$1,324,729	\$2,224,107	\$1,385,961
Library Acquisitions	\$345,098	\$192,749	\$286,500
Major Repairs	\$0	\$195,523	\$583,498
Total Expenditures	\$49,511,040	\$51,480,231	\$55,965,413

Facilities

	Owned	Leased	Total
Land Holdings	500.95 Acres	265.45 Acres	766.4 Acres
Building Gross Square Footage	1,402,457	413,816	1,816,273
Building Net Assignable Square Footage	980,421	338,175	1,318,596

Net Assignable Space by Allocation Category

	Square Feet	% Total
Academic	500,539	38.0
Administrative	63,114	4.8
Athletics	66,695	5.0
Auxiliary	524,661	39.8
Residential	163,587	12.4
Total	1,318,596	100.0

Faculty/Staff

Fall 2006 Full-Time Faculty by Rank

	Tenured	On tenure track	Not on tenure track	Total	%
Professors	65			65	21.5
Associate Professors	54	2	1	57	18.9
Assistant Professors	38	74	21	133	44.0
Instructors			39	39	12.9
Lecturers			8	8	2.7
Total	157	76	69	302	100.0

Fall 2006 Full-Time Faculty by Highest Degree

	Tenured	On tenure track	Not on tenure track	Total	%
Bachelors			2	2	.7
Masters	35	22	42	99	32.8
Terminal Masters	7	4	9	20	6.6
Doctorate	115	50	16	181	59.9
Total	157	76	69	302	100.0

Fall 2006 Full-Time Faculty by Race and Gender

	Men	Women	Total	%
American Indian/Alaskan		1	1	.3
Asian/Pacific Islander	16	3	19	6.3
Black, non-Hispanic	3	11	14	4.7
Foreign	2	1	3	1.0
Hispanic	1		1	.3
White, non-Hispanic	142	122	264	87.4
Total	164	138	302	100.0

Full-Time Equivalent Faculty

06-07	339.3
05-06	343.0
04-05	343.2

Fall 2006 Employees by Occupation

	Full-Time	Part-Time	Total	%
Primarily Instruction	302	90	392	46.2
Executive/administrative/managerial	48		48	5.7
Other professionals (support/service)	142	10	152	17.9
Technical and paraprofessionals	53	4	57	6.7
Clerical and secretarial	101	1	102	12
Skilled crafts	20	1	21	2.5
Service/Maintenance	76		76	9.0
Total	742	106	848	100.0

Fall 2006 Employees by Race and Gender

	Men	Women	Total	%
American Indian/Alaskan	1	1	2	.2
Asian/Pacific Islander	17	6	23	2.7
Black, non-Hispanic	57	86	143	16.9
Foreign, Non-Resident	4	2	6	.7
Hispanic	1	2	3	.4
Unknown	1	0	1	.1
White, non-Hispanic	286	384	670	79.0
Total	367	481	848	100.0