

McNeese State University

2005 Fact Book



Prepared By:
Office of Institutional Research

www.mcneese.edu/ir

TABLE OF CONTENTS

History	3
Mission Statement	4
Institutional Goals	5
Accreditation	6
Organizational Chart	7
Inventory of Degree Programs	8
Enrollment Fall 2005	10
Financial Aid	15
2005-06 Annual Fees	15
Degrees conferred	15
Student Credit Hours	16
First-Time Freshman	17
Revenues	19
Expenditures	19
Facilities	20
Faculty	21
Faculty/Staff	22
Historical Enrollment Data	23

History

The opening session of Lake Charles Junior College began on September 11, 1939. The following fall, the school changed its name to John McNeese Junior College to honor John McNeese, a renowned Southwest Louisiana educator and the first superintendent of schools in Imperial Calcasieu Parish. In 1950 McNeese became a four-year college in its own right and came under the authority of the Louisiana Board of Education. Finally, in 1970, McNeese State University became the official name of the school.

McNeese achieved Commission on Colleges/Southern Association of Colleges and Schools accreditation in 1954 and maintains its regional accreditation status as a Level IV institution authorized to award associate, bachelor, master, and specialist degrees. The University also provides opportunities for continuing education in support of its mission to value lifelong learning. As a member of the University of Louisiana System and a selective admissions institution, McNeese offers degrees through six academic colleges: Business, Education, Engineering and Technology, Liberal Arts, Nursing, and Science. McNeese's athletic programs are NCAA-certified for competition at I-AA and I-A levels. The football team achieved national prominence when it advanced to the national playoffs in 1997 and 2002.

The McNeese State University campus in Lake Charles, Louisiana features 68 buildings on 500 acres dotted with live oak trees and azalea bushes. The McNeese community continues to use the three original structures - Kaufman Hall, Ralph O. Ward Memorial Gym (the Arena), and Francis G. Bulber Auditorium. Bulber Auditorium, a striking example of Art Deco architecture, is listed on the National Register of Historic Places.

McNeese State University upholds a long tradition of service to the Southwest Louisiana community and the nation. The University's motto of "Excellence with a Personal Touch" extends beyond the classroom to offering help to others in times of need. During World War II, the campus was the headquarters of the Louisiana Maneuvers, an extensive military exercise to prepare American soldiers for battle. In 1957, the McNeese community gave aid and comfort to the victims of Hurricane Audrey and served as the National Guard's base of rescue operations. Recently, McNeese provided shelter for New Orleans residents and university students fleeing Hurricane Katrina. McNeese faced one of its greatest challenges when Hurricane Rita struck in the fall of 2005. The storm caused devastating damage to campus facilities and infrastructure. The recovery effort after Hurricane Rita showed the community of Southwest Louisiana the high caliber of McNeese faculty, staff, and students in their commitment to complete the semester and move forward in support of the core values of academic excellence, student success, fiscal responsibility, and university/community alliances.

Mission Statement

McNeese State University, a selective admissions institution, provides education, research, and service that support our core values of academic excellence, student success, fiscal responsibility, and university-community alliances. The University's fundamental educational mission is to offer associate, baccalaureate, and specific graduate curricula distinguished by academic excellence. The University engages in collaborative ventures to benefit industry and to enhance economic development and cultural growth in this region and beyond.

The foundation for student success begins with faculty commitment to excellence in teaching, research, and creative and scholarly activity. At McNeese State University, a member of the University of Louisiana System, students cultivate skills for critical thinking and effective expression and gain an understanding of the global community. The learning and social environment integrates discipline-specific knowledge with the values of lifelong learning, ethical responsibility, and civic engagement.

Adopted by McNeese State University - 2/21/05

Approved by the Board of Supervisors of the University of Louisiana System - 4/29/05

Institutional Goals

Adopted 6/29/05

Revised 8/11/05

Academic Excellence

1. Emphasize excellence in instruction.
2. Develop programs that are viable, innovative, and relevant to market needs.
3. Infuse a global outlook and ethical standards in course content and curriculum development.
4. Uphold the commitment to regional and national program accreditation.
5. Encourage undergraduate and graduate research in appropriate disciplines.

Student Success

1. Foster a climate that enhances student learning, focuses on retention, values advising, and enriches the quality of campus-life.
2. Nurture an environment to support cultural diversity.
3. Present students opportunities for leadership.
4. Provide venues for learning to attract non-traditional students.
5. Provide an aesthetically-pleasing campus, functional facilities, and state-of-the-art equipment.

Fiscal Responsibility

1. Engage in continuous assessment, evaluation, and improvement.
2. Utilize the role of technology to increase the efficiency and effectiveness of campus operations.
3. Garner outside funding sources to support the University mission.
4. Capitalize of efficient use of resources.
5. Support efforts to obtain federal funding.

University-Community Alliances

1. Support mutually beneficial university/community collaborations.
2. Strengthen economic development through partnerships that provide technical assistance and information transfer to business and industry.
3. Enhance artistic, humanistic, and cultural opportunities in the area.
4. Retain certification and maintain competition in NCAA athletic programs
5. Partner with educational agencies to improve the quality of life in our region.

Accreditation

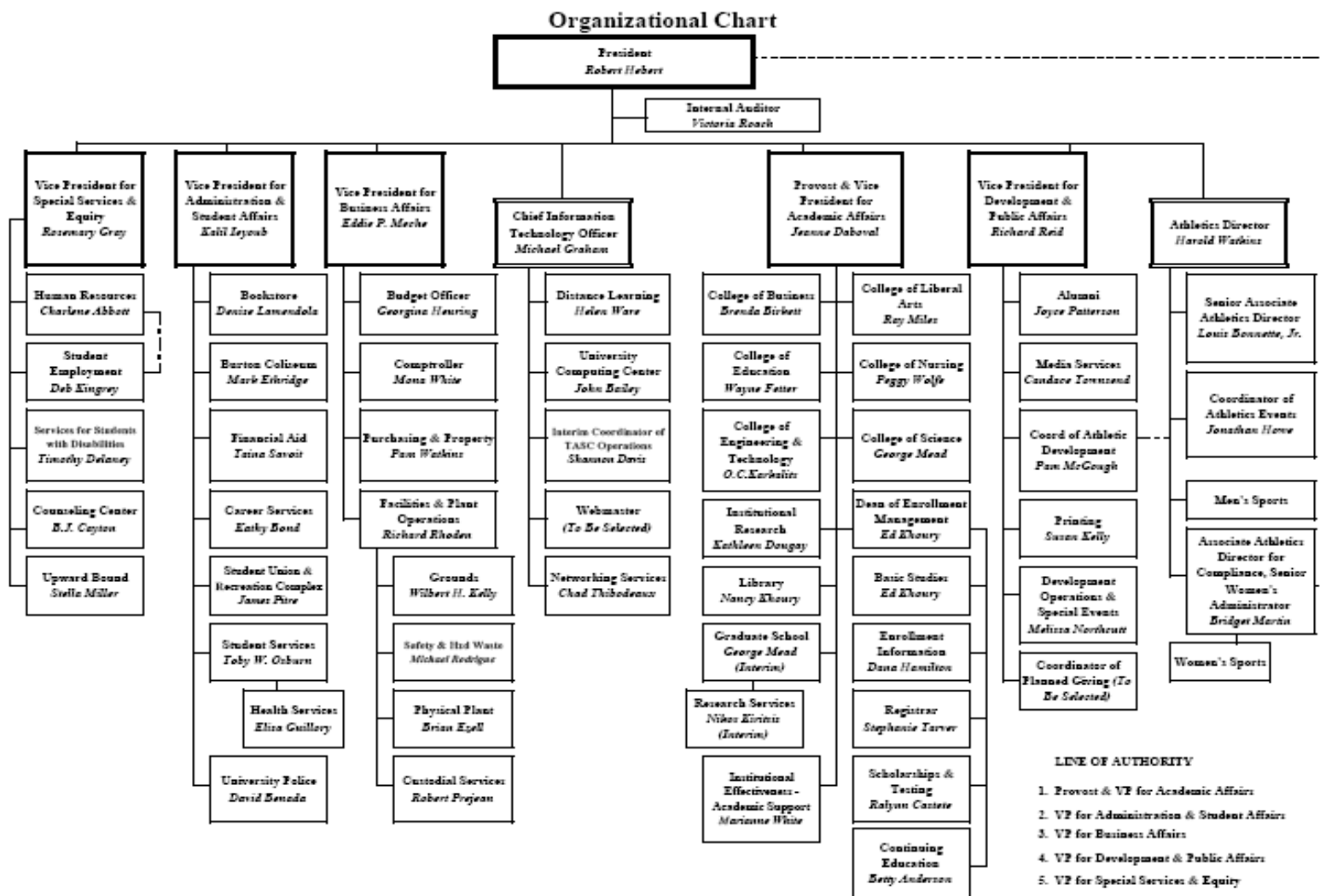
McNeese State University is accredited by the Commission on Colleges of the Southern Association of Colleges and Schools (1866 Southern Lane, Decatur, Georgia, 30033 Telephone number 404-679-4500) to award associate, bachelor, master, and specialist degrees. Following is a comprehensive list of other agencies included in the Board of Regents General Policy on Program Accreditation that have accredited or approved McNeese academic programs:

- AACSB International–The Association to Advance Collegiate Schools of Business
- American Association of Family and Consumer Sciences
- American Chemical Society
- Commission on Accreditation for Dietetics Education (CADE)
- Computing Accreditation Commission of the Accreditation Board for Engineering and Technology (ABET) 111 Market Place, Suite 1050, Baltimore, M.D. 21202-4012, (410) 347-7700
- Engineering Accreditation Commission of the Accreditation Board for Engineering and Technology (ABET) 111 Market Place, Suite 1050, Baltimore, M.D. 21202-4012, (410) 347-7700
- Joint Review Committee on Education in Radiologic Technology
29 North Wacker Drive, Suite 900, Chicago, IL 60606-2901, (312) 704-5300 (JRCERT)
- National Accrediting Agency for Clinical Laboratory Sciences (NAACLS)
P. O. Box 75634 Chicago, IL 60675-5634, (773) 714-8880
- National Association of Schools of Music (NASM)
- National Council for Accreditation of Teacher Education (NCATE)
- National League for Nursing Accrediting Commission (NLNAC)
61 Broadway, New York, NY 10006, (212) 363-5555 Ext. 153, Facsimile: (212) 812-0390, Web site: <http://www.nlnac.org>.
- Technology Accreditation Commission of the Accreditation Board for Engineering and Technology (ABET) 111 Market Place, Suite 1050, Baltimore, M.D. 21202-4012, (410) 347-770

Other agencies that have approved or certified programs include:

- American Alliance for Health, Physical Education, Recreation and Dance/National Association for Sport and Physical Education
- Association for Childhood Education International
- Council for Exceptional Children
- International Society for Technology Education
- Louisiana Board of Elementary and Secondary Education
- Louisiana State Board of Nursing
- National Association for the Education of Young Children
- National Collegiate Athletic Association
- National Council for the Social Studies
- National Council of Teachers of English
- National Council of Teachers of Mathematics
- National Science Teachers Association
- Organization of American Kodály Educators

ORGANIZATIONAL CHART FOR McNEESE STATE UNIVERSITY
Member, University of Louisiana System



Inventory of Degree Programs

General and Basic Studies

General Studies.....	A.G.S.
General Studies.....	B.G.S.

College of Business

Accounting.....	B.S.
Business Administration.....	M.B.A.
Finance.....	B.S.
General Business Administration.....	B.S.
Management.....	B.S.
Marketing.....	B.S.

Burton College of Education

Business Education—Grades 6-12.....	B.S.
Curriculum and Instruction in Early Childhood Education.....	M.Ed
Curriculum and Instruction in Elementary Education.....	M.Ed
Curriculum and Instruction in Secondary Education.....	M.Ed
Early Childhood Education.....	A.S.
Early Childhood Education—Grades PK-3.....	B.S.
Education.....	M.Ed.
Educational Leadership.....	M.Ed.
Educational Leadership.....	Ed.S.
Educational Technology Leadership.....	M.Ed.
Elementary Education—Grades 1-5.....	B.S.
Elementary Education—Grades 1-5.....	M.A.T.
Health and Physical Education—Grades K-12.....	B.S.
Health and Human Performance, General	B.S.
Health and Human Performance	M.S.
Instructional Technology.....	M.S.
Psychology.....	B.S.
Psychology.....	M.A.
School Counseling.....	M.Ed.
Secondary Education—Grades 6-12.....	M.A.T.
Special Education, General.....	B.A.
Special Education Mild/Moderate—Grades 1-12.....	M.A.T.

College of Engineering & Technology

Engineering.....	B.S.
Engineering.....	M. Eng.
Engineering Technology.....	A.S.
Engineering Technology.....	B.S.

College of Liberal Arts

Art.....	B.A.
Art Education—Grades K-12.....	B.A.
Creative Writing.....	M.F.A.
Criminal Justice.....	B.S.
English.....	B.A.
English.....	M.A.
English Education—Grades 6-12.....	B.A.
Foreign Languages Education—Grades 6-12.....	B.A.
French.....	B.A.
Government.....	B.A.
History.....	B.A.
Liberal Studies.....	B.A.
Mass Communication.....	B.S.
Music Education— Instrumental Grades K-12	B.M.Ed.
Music Education—Vocal Grades K-12	B.M.Ed.
Music Education.....	M.M.Ed.
Music Performance.....	B.M.
Paralegal Studies.....	A.A.
Social Studies Education—Grades 6-12.....	B.A.
Sociology.....	B.A.
Spanish.....	B.A.
Speech.....	B.A.
Speech Education—Grades 6-12.....	B.S.
Theatre Arts.....	B.A.

College of Nursing

Nursing.....	A.D.N.
Nursing.....	B.S.N.
Nursing.....	M.S.N.

College of Science

Agricultural Education—Grades 6-12.....	B.S.
Agricultural Sciences.....	B.S.
Biological Science.....	B.S.
Biology Education—Grades 6-12.....	B.S.
Chemistry.....	B.S.
Chemistry Education—Grades 6-12.....	B.S.
Clinical Laboratory Science.....	B.S.
Computer Information Technology.....	A.S.
Computer Science.....	B.S.
Environmental and Chemical Sciences.....	M.S.
Environmental Science.....	B.S.
Environmental Science Education—Grades 6-12.....	B.S.
Family & Consumer Sciences.....	B.S.
Family & Consumer Sciences Education—Grades 6-12.....	B.S.
Mathematics Education—Grades 6-12.....	B.S.
Mathematical Sciences.....	M.S.
Mathematics.....	B.S.
Radiologic Technology.....	B.S.
Physics.....	B.S.
Wildlife Management.....	B.S.

Enrollment Fall 2005

Fall 2005 Enrollment by level

	<u>Enrollment</u>	<u>Percent</u>
Undergraduate	7,847	87.3%
Graduate	1,145	12.7%
<i>Total</i>	<i>8,992</i>	<i>100.0%</i>

Fall 2005 Full-Time Equivalent Enrollment by level

	<u>Enrollment</u>	<u>Percent</u>
Undergraduate (12 hours)	8,987.6	91.2%
Graduate (9 hours)	871.7	8.8%
<i>Total</i>	<i>9,859.3</i>	<i>100.0%</i>

Fall 2005 Enrollment by rank

	<u>Enrollment</u>	<u>Percent</u>
Early Admissions	169	1.9%
Freshman	2,698	30.0%
Sophomore	1,600	17.8%
Junior	1,358	15.1%
Senior	2,007	22.3%
Masters Candidate	875	9.7%
Education Specialist	9	.1%
Special Graduate	261	2.9%
Non-Credit/Non-Degree	15	.2%
<i>Total</i>	<i>8,992</i>	<i>100.0%</i>

Fall 2005 Enrollment by college

	<u>Undergraduate</u>	<u>Graduate</u>	<u>Total</u>	<u>Percent</u>
Business	1,088	87	1,175	13.1%
Continuing Education	15	18	33	.4%
Education	1,340	712	2,052	22.8%
Engineering & Technology	515	86	601	6.7%
General & Basic Studies	1,206		1,206	13.4%
Liberal Arts	1,216	54	1,270	14.1%
Nursing	1,193	68	1,261	14.0%
Science	1,274	120	1,394	15.5%
Total	7,847	1,145	8,992	100.0%

Fall 2005 Enrollment by status

	<u>Undergraduate</u>	<u>Graduate</u>	<u>Total</u>	<u>Percent</u>
Full-Time	6,507	427	6,934	77.1%
Part-Time	1,340	718	2,058	22.9%
Total	7,847	1,145	8,992	100.0%

Fall 2005 Enrollment by gender

	<u>Undergraduate</u>	<u>Graduate</u>	<u>Total</u>	<u>Percent</u>
Female	4,680	816	5,496	61.1%
Male	3,167	329	3,496	38.9%
Total	7,847	1,145	8,992	100.0%

Fall 2005 Enrollment by ethnicity

	<u>Undergraduate</u>	<u>Graduate</u>	<u>Total</u>	<u>Percent</u>
Amer Indian/Alaskan	58	4	62	.7%
Asian/Pacific Isl	75	7	82	.9%
Black	1,576	221	1,797	20.0%
Foreign	143	135	278	3.1%
Hispanic	120	14	134	1.5%
Other	41	5	46	.5%
White	5,834	759	6,593	73.3%
Total	7,847	1,145	8,992	100.0%

Fall 2005 Enrollment by current entry status

	<u>Undergraduate</u>	<u>Graduate</u>	<u>Total</u>	<u>Percent</u>
Early Admissions	169		169	1.9%
Continuing	5,391	754	6,145	68.3%
First-Time Freshman	1,369		1,369	15.2%
New Graduate		216	216	2.4%
Re-Entry	367	122	489	5.5%
Transfer	338	30	368	4.1%
Visiting	213	23	236	2.6%
Total	7,847	1,145	8,992	100.0%

Fall 2005 Enrollment by age

	<u>Undergraduate</u>	<u>Graduate</u>	<u>Total</u>	<u>Percent</u>
Under 18	220		220	2.5%
18 – 19	2,342		2,342	26.0%
20 – 21	2,092	2	2,094	23.3%
22 – 24	1,428	251	1,679	18.7%
25 – 29	733	286	1,019	11.3%
30 – 34	405	177	582	6.5%
35 – 39	279	136	415	4.6%
40 – 49	261	181	442	4.9%
50 – 64	84	102	186	2.1%
Over 64	3	10	13	.1%
Total	7,847	1,1145	8,992	100.0%

Fall 2005 Enrollment by parish, state and country							
Parish	Enrollment		State	Enrollment		Country	Enrollment
Acadia	265		Alabama	4		Argentina	4
Allen	252		Alaska	2		Azerbaijan	8
Ascension	20		Arizona	4		Bangladesh	3
Assumption	3		Arkansas	6		Bolivia	6
Avoyelles	10		California	7		Bulgaria	1
Beauregard	539		Colorado	4		Canada	4
Bossier	16		Connecticut	1		China	5
Caddo	29		Delaware	1		Colombia	21
Calcasieu	4,761		Florida	10		Croatia	1
Caldwell	1		Georgia	7		Ecuador	11
Cameron	255		Hawaii	1		Ethiopia	1
Claiborne	2		Illinois	5		France	1
Concordia	3		Indiana	2		Gambia	1
DeSoto	6		Iowa	2		Honduras	2
East Baton Rouge	61		Kansas	7		Iceland	2
East Feliciana	10		Kentucky	1		India	93
Evangeline	122		Massachusetts	3		Indonesia	6
Franklin	2		Michigan	8		Ireland	2
Grant	4		Minnesota	1		Jamaica	2
Iberia	50		Mississippi	12		Kenya	1
Iberville	4		Missouri	3		Macedonia	1
Jackson	3		New Jersey	4		Mali	1
Jefferson	71		New Mexico	2		Mexico	7
Jefferson Davis	576		New York	7		Nepal	4
Lafayette	136		North Carolina	4		Netherlands	2
Lafourche	10		Ohio	7		New Zealand	4
LaSalle	6		Oklahoma	5		Niger	2
Lincoln	4		Oregon	3		Nigeria	3
Livingston	12		South Carolina	2		Pakistan	3
Madison	1		Tennessee	3		Peru	8
Morehouse	5		Texas	401		Philippines	1
Natchitoches	19		Virginia	3		Romania	1
Orleans	117		Washington	3		Serbia-Montenegro	1
Ouachita	15		Wisconsin	4		Singapore	1
Plaquemines	7					Slovenia	1
Pointe Coupee	6					South Africa	2
Rapides	74					South Korea	11
Sabine	15					Spain	1
St Bernard	5					Sri Lanka	1
St Charles	15					Sweden	3
St Helena	1					Taiwan	23
St James	2					Thailand	1
St John	9					Trinidad And Tobago	1
St Landry	160					Turkey	7
St Martin	33					Turkmenistan	1

St Mary	24					Ukraine	1
St Tammany	54					United Kingdom (IS)	7
Tangipahoa	11					Venezuela	2
Terrebonne	24					Vietnam	4
Vermilion	142						
Vernon	184						
Washington	5						
Webster	3						
West Baton Rouge	1						
West Feliciana	6						
Winn	2						
Total Louisiana	8,173		Total Out of State	539		Total Foreign	280
% of Total Enrollment	90.9%		% of Total Enrollment	6.0%		% of Total Enrollment	3.1%
Number of Parishes	56		Number of States (Other than Louisiana)	34		Number of Countries (Other than USA)	49
Five Parish Total	6,383						

Financial Aid

	<u>03-04</u> (Prior Year)	<u>04-05</u> (Current Year)
Undergraduates Receiving Aid	75%	77%
Amount of Undergraduate Aid	\$36 Million	\$40.5 Million
Graduates Receiving Aid	52%	54%
Amount of Graduate Aid	\$5 Million	\$5.3 Million

2005-06 Annual Fees (Fall and Spring Semesters)

	<u>Undergraduate</u> (12 hours)	<u>Graduate</u> (9 hours)
In-State Undergraduate Tuition & Fees	\$3159	\$3,040
Out-of-State Undergraduate Tuition & Fees	\$9,225	\$9,106
Book & Supplies (Estimated)	\$1,000	\$1,000
Room (Estimated based on semi-private dorm)	\$1,370	\$1,370
Board (Estimated based on declining balance plan)	\$1,864	\$1,864

Degrees conferred by college July 1, 2004 – June 30, 2005

	<u>Associate</u>	<u>Bachelor's</u>	<u>Master's</u>	<u>Education Specialist</u>	<u>Total</u>
Business		212	25		237
Education	4	167	121	7	299
Engineering & Technology	16	41	30		87
General & Basic Studies	45	178			223
Liberal Arts	32	201	23		256
Nursing	13	62	13		88
Science	14	130	23		167
Total	124	991	235	7	1,357

Fall 2005 Student Credit Hours (SCH) by department by level

	Lower UG	Upper UG	Graduate	Total
Accounting, Fin & Econ	1,218	2,934	291	4,443
Agriculture	1,264	893	28	2,185
Biological & Envr Sciences	6,313	3,635	159	10,107
Basic Studies	1,360	22		1,382
Chemistry	3,110	1,590	211	4,911
Educ Leadership & Instr Tech	794	477	1,989	3,260
English & Foreign Languages	8,843*	2,269	456	11,568
Engineering	450	1,252	650	2,352
Family & Consumer Science	992	1,633	85	2,710
Health & Human Performance	2,357	2,202	276	4,835
History	4,668	1,284	21	5,973
Math, Comp Sci, & Stat	10,690**	3,417	747	14,854
Mass Communications	2,035	1,685	12	3,732
Mgmt, Marketing and Gen Bus	1,206	3,930	384	5,520
Graduate Nursing			366	366
Performing Arts	2,902	1,648	27	4,577
Physics	1,233	797	45	2,075
Psychology	4,245	1,857	752	6,854
Social Sciences	4,940	4,743	75	9,758
Technology	529	505	4	1,038
Teacher Education	1,080	2,286	1,138	4,504
TEDU Admissions/Field Exper		855	54	909
Undergraduate Nursing	212	4,726	39	4,977
Visual Arts	1,293	1,401	36	2,730
Total	61,734	46,041	7,845	115,620

* Includes 1,152 developmental

** Includes 2,020 developmental

First-Time Freshman

Fall 2005 First-Time freshman by status

	<u>Total</u>	<u>Percent</u>
Full-Time	1,315	96.1%
Part-Time	54	3.9%
<i>Total</i>	<i>1,369</i>	<i>100.0%</i>

Fall 2005 First-Time freshman by gender

	<u>Full-Time</u>	<u>Part-Time</u>	<u>Total</u>	<u>Percent</u>
Female	744	36	780	57.0%
Male	571	18	589	43.0%
<i>Total</i>	<i>1,315</i>	<i>54</i>	<i>1,369</i>	<i>100.0%</i>

Fall 2005 First-Time freshman by ethnicity

	<u>Full-Time</u>	<u>Part-Time</u>	<u>Total</u>	<u>Percent</u>
Amer Indian/Alaskan	13	1	14	1.0%
Asian/Pacific Isl	10		10	.7%
Black	262	14	276	20.2%
Foreign	21		21	1.5%
Hispanic	16		16	1.2%
Other	7	1	8	.6%
White	986	38	1,024	74.8%
<i>Total</i>	<i>1,315</i>	<i>54</i>	<i>1,369</i>	<i>100.0%</i>

Fall 2005 First-Time Freshman Admissions

	<u>Men</u>	<u>Women</u>	<u>Total</u>
Applied	818	1,167	1,985
Accepted	670	959	1,629
Enrolled Full Time	571	744	1,315
Enrolled Part Time	54	36	90

Fall 2005 First-Time Freshman by parish, state and country

Parish	Enrollment	State	Enrollment	Countrv	Enrollment
Acadia	33	Alaska	1	Bolivia	2
Allen	33	California	1	Canada	1
Ascension	8	Colorado	2	Ecuador	1
Avoyelles	1	Connecticut	1	Honduras	1
Beauregard	101	Illinois	1	Iceland	1
Caddo	5	Iowa	1	Indonesia	1
Calcasieu	693	Kansas	1	Mexico	2
Cameron	57	Michigan	1	Nigeria	1
DeSoto	2	Mississippi	2	Peru	3
East Baton Rouge	7	New Mexico	1	Serbia-Montenegro	1
East Feliciana	2	New York	1	Spain	1
Evangeline	12	Ohio	1	Taiwan	1
Grant	1	Texas	95	Turkey	3
Iberia	7	Wisconsin	1	Vietnam	2
Iberville	2				
Jefferson	9				
Jefferson Davis	94				
Lafayette	14				
Lafourche	6				
Morehouse	1				
Natchitoches	1				
Orleans	14				
Ouachita	2				
Plaquemines	1				
Pointe Coupee	1				
Rapides	10				
Sabine	6				
St John	2				
St Landry	20				
St Martin	4				
St Mary	11				
St Tammany	12				
Tangipahoa	4				
Terrebonne	5				
Vermilion	20				
Vernon	34				
Webster	1				
West Feliciana	1				
Winn	1				
Total Louisiana	1,238	Total Out of State	110	Total Foreign	21
% of Total FTF	90.4%	% of Total FTF	8.1%	% of Total FTF	1.5%
Number of Parishes	39	Number of States		Number of Countries	
Five Parish Total	978	(Other than Louisiana)	14	(Other than USA)	14

Revenues
Operating (Unrestricted) Fund

	Actual 2003-2004	Actual 2004-2005	Budgeted 2005-2006
Revenues by Source			
State Funds	\$26,676,540	\$26,784,528	\$27,941,565
Self-Generated Funds	\$20,740,546	\$22,726,512	\$25,529,890
Total Revenues	\$47,417,086	\$49,511,040	\$53,471,455

Expenditures
Operating (Unrestricted) Fund

	Actual 2003-2004	Actual 2004-2005	Budgeted 2005-2006
Expenditures by Function			
Instruction	\$21,819,458	\$23,240,252	\$25,102,395
Research	\$848,900	\$836,375	\$650,504
Academic Support	\$4,650,333	\$4,773,602	\$5,170,191
Student Services	\$3,249,202	\$3,354,601	\$3,533,897
Institutional Services	\$5,397,798	\$5,410,460	\$6,101,109
Scholarships/Fellowships	\$3,179,280	\$3,377,596	\$3,695,228
Plant Operations/Maintenance	\$4,917,731	\$4,990,776	\$5,605,954
Transfers out of agency	\$875,546	\$986,588	\$1,098,052
Athletics	\$2,478,839	\$2,440,791	\$2,514,125
Expenditures by Expense Category			
Salaries	\$26,680,451	\$27,960,521	\$29,038,786
Other Compensation	\$476,292	\$516,437	\$635,786
Related Benefits	\$7,091,237	\$8,381,179	\$9,826,105
Travel	\$174,563	\$210,863	\$248,068
Operating Services	\$2,877,187	\$2,874,263	\$3,433,804
Supplies	\$462,473	\$540,903	\$647,323
Professional Services	\$168,812	\$112,597	\$259,518
Other Charges	\$6,350,596	\$6,225,403	\$6,663,353
Debt Services	\$32,594	\$32,458	\$0
Interagency Transfers	\$875,546	\$986,588	\$1,098,052
General Acquisitions	\$1,936,836	\$1,324,729	\$1,334,160
Library Acquisitions	\$290,500	\$345,098	\$286,500
Total Expenditures	\$47,417,086	\$49,511,040	\$53,471,455

Facilities

	Owed	Leased
Land Holdings	500.95 Acres	265.45 Acres
Building Gross Square Footage	1,402,457	398,096
Building Net Assignable Square Footage	979,421	323,555

Faculty

Fall 2005 Full-Time faculty by Rank

	Tenured	On tenure track	Not on tenure track	Total	%
Professors	70			70	22.9%
Associate Professors	57	2	1	60	19.7%
Assistant Professors	34	81	7	122	40.0%
Instructors			38	38	12.5%
Lecturers			15	15	4.9%
Total	161	83	61	305	100.0%

Fall 2005 Full-Time faculty by highest degree

	Tenured	On tenure track	Not on tenure track	Total	%
Bachelors			2	2	.6%
Masters	36	21	42	99	32.5%
Terminal Masters	6	5	11	22	7.2%
Doctorate	119	57	6	182	59.7%
Total	161	83	61	305	100.0%

Fall 2005 Full-Time faculty by race and gender

	Men	Women	Total	%
American Indian/Alaskan	0	2	2	.6%
Asian/Pacific Islander	18	3	21	6.9%
Black, non-Hispanic	3	13	16	5.3%
Hispanic	0	1	1	.3%
White, non-Hispanic	148	117	265	86.9%
Total	169	136	305	100.0%

Full-Time Equivalent Faculty

05-06	343.0
04-05	343.2

Faculty/Staff

Fall 2005 Employees by occupation

	Full-Time	Part-Time	Total	%
Primarily Instruction	305	104	409	46.4%
Executive/administrative/managerial	41		41	4.6%
Other professionals (support/service)	157	18	175	19.8%
Technical and paraprofessionals	45	1	46	5.2%
Clerical and secretarial	105	1	106	12.0%
Skilled crafts	26		26	3.0%
Service/Maintenance	78	1	79	9.0%
Total	757	125	882	100.0%

Fall 2005 Employees by race and gender

	Men	Women	Total	%
American Indian/Alaskan		2	2	.2%
Asian/Pacific Islander	22	4	26	3.0%
Black, non-Hispanic	62	93	155	17.6%
Hispanic		2	2	.2%
White, non-Hispanic	306	390	696	78.9%
Foreign, Non-Resident		1	1	.1%
Total	390	492	882	100.0%

Historical Enrollment Data

<u>Fall</u>	<u>Under-graduate</u>	<u>Graduate</u>	<u>Total</u>		<u>Fall</u>	<u>Under-graduate</u>	<u>Graduate</u>	<u>Total</u>
2005	7,847	1,145	8,992		1969	4,568	582	5,150
2004	7,724	1,060	8,784		1968	4,618	472	5,090
2003	7,330	1,117	8,447		1967	4,234	308	4,542
2002	7,010	1,019	8,029		1966	3,983	333	4,316
2001	6,845	935	7,780		1965	3,512	295	3,807
2000	6,731	901	7,632		1964	3,149	211	3,360
1999	6,865	1,014	7,879		1963	2,663	164	2,827
1998	6,978	1,017	7,995		1962	2,999	132	3,131
1997	7,050	1,087	8,137		1961	2,848	98	2,946
1996	7,063	1,024	8,087		1960	2,697		2,697
1995	7,381	1,063	8,444		1959	2,502		2,502
1994	7,658	1,071	8,729		1958	2,444		2,444
1993	7,347	1,057	8,404		1957	2,024		2,024
1992	7,316	1,158	8,474		1956	1,916		1,916
1991	6,818	1,013	7,831		1955	1,661		1,661
1990	6,662	1,062	7,724		1954	1,367		1,367
1989	6,557	1,022	7,579		1953	1,192		1,192
1988	6,383	1,040	7,423		1952	993		993
1987	6,457	1,036	7,493		1951	905		905
1986	6,430	950	7,380		1950	501		501
1985	6,648	1,176	7,824		1949	397		397
1984	6,645	1,336	7,981		1948	575		575
1983	6,491	1,535	8,026		1947	615		615
1982	5,888	1,463	7,351		1946	640		640
1981	5,461	1,556	7,017		1945	233		233
1980	4,700	691	5,391		1944	131		131
1979	4,435	721	5,156		1943	146		146
1978	4,626	750	5,376		1942	169		169
1977	4,883	642	5,525		1941	223		223
1976	5,048	758	5,806		1940	242		242
1975	5,058	955	6,013		1939	254		254
1974	4,841	845	5,686					
1973	4,922	915	5,837					
1972	5,226	959	6,185					
1971	5,067	958	6,025					
1970	4,844	750	5,594					