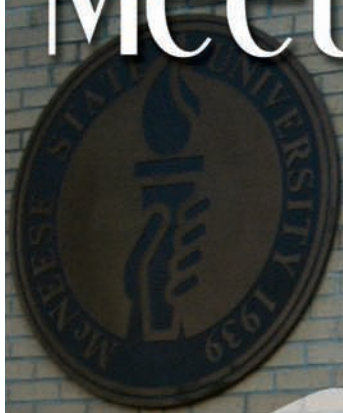


# Meet Your Opportunity



## McNeese 2011-2012 Fact Book

Prepared by: Office of Institutional Research [www.mcneese.edu/ir](http://www.mcneese.edu/ir)

**McNeese State University**  
4205 Ryan Street  
Lake Charles, LA 70609

**Fact Book 2011 - 2012**

**Table of Contents**

<b>History.....</b>	<b>1</b>
<b>Mission Statement.....</b>	<b>2</b>
<b>Organizational Chart.....</b>	<b>4</b>
<b>Accreditation .....</b>	<b>5</b>
<b>Inventory of Degree Programs .....</b>	<b>6</b>
<b>Fall Enrollment .....</b>	<b>9</b>
<b>Historical Fall Enrollment Data Since 1939 .....</b>	<b>31</b>
<b>First-Time Freshmen .....</b>	<b>33</b>
<b>Transfers.....</b>	<b>43</b>
<b>Spring Enrollment .....</b>	<b>47</b>
<b>Historical Spring Enrollment Data Since 1940 .....</b>	<b>67</b>
<b>Degrees Conferred .....</b>	<b>72</b>
<b>Student Credit Hours (SCH).....</b>	<b>79</b>
<b>Financial Aid .....</b>	<b>88</b>
<b>Full-Time Average Annual Fees .....</b>	<b>88</b>
<b>Revenues .....</b>	<b>89</b>
<b>Expenditures.....</b>	<b>89</b>
<b>Faculty/Staff .....</b>	<b>90</b>
<b>Facilities .....</b>	<b>92</b>



## History

McNeese State University was established by the Louisiana Legislature in 1939. The institution was first named Lake Charles Junior College, and was a division of Louisiana State University with the opening session beginning on September 11, 1939. The following fall, the school changed its name to John McNeese Junior College to honor John McNeese, a renowned Southwest Louisiana educator and the first superintendent of schools in Imperial Calcasieu Parish. In 1950, McNeese became a four-year college in its own right and came under the authority of the Louisiana Board of Education. Finally, in 1970, McNeese State University became the official name of the school.

McNeese achieved Commission on Colleges/Southern Association of Colleges and Schools accreditation in 1954 and maintains its regional accreditation status as a Level IV institution authorized to award associate, bachelor, master, and specialist degrees.

The University also provides opportunities for continuing education in support of its mission to value lifelong learning. As a member of the University of Louisiana System and a selective admissions institution, McNeese offers degrees through the department of general and basic studies and six academic colleges: Business, Education, Engineering and Engineering Technology, Liberal Arts, Nursing, and Science. McNeese's student body is comprised of students from throughout Louisiana, the United States, and approximately 50 countries. McNeese's athletic programs are NCAA-certified for competition at the Division I level.

The McNeese State University campus in Lake Charles, Louisiana, features 68 buildings on 500 acres dotted with live oak trees and azalea bushes. The McNeese community continues to use three original structures — Kaufman Hall, Ralph O. Ward Memorial Gym (the Arena), and Francis G. Bulber Auditorium. Bulber Auditorium, a striking example of Art Deco architecture, is listed on the National Register of Historic Places.

McNeese State University upholds a long tradition of service to the Southwest Louisiana community and the nation. The University motto of "Excellence with a Personal Touch" extends beyond the classroom. During World War II, the campus was the headquarters of the Louisiana Maneuvers, an extensive military exercise to prepare American soldiers for battle. In 1957, the McNeese community gave aid and comfort to the victims of Hurricane Audrey and served as the National Guard's base of rescue operations. Recently, McNeese provided shelter for New Orleans residents and university students fleeing from Hurricane Katrina. McNeese faced one of its greatest challenges when Hurricane Rita struck in the fall of 2005. The storm caused devastating damage to campus facilities and infrastructure. The recovery effort after Hurricane Rita demonstrated the resilience and commitment of the McNeese faculty, staff, and students to higher education and to moving forward in support of the core values of academic excellence, student success, fiscal responsibility, and university/community alliances.

## **Mission Statement**

McNeese State University, a selective admissions institution, provides education, research, and service that support core values of academic excellence, student success, fiscal responsibility, and university-community alliances. The University's fundamental educational mission is to offer associate, baccalaureate, and specific graduate curricula distinguished by academic excellence. The University engages in collaborative ventures to benefit industry and to enhance economic development and cultural growth in this region and beyond.

The foundation for student success begins with faculty commitment to excellence in teaching, research, and creative and scholarly activity. At McNeese State University, a member of the University of Louisiana System, students cultivate skills for critical thinking and effective expression and gain an understanding of the global community. The learning and social environment integrates discipline-specific knowledge with the values of lifelong learning, ethical responsibility, and civic engagement.

*Adopted by McNeese State University - 2/21/05*

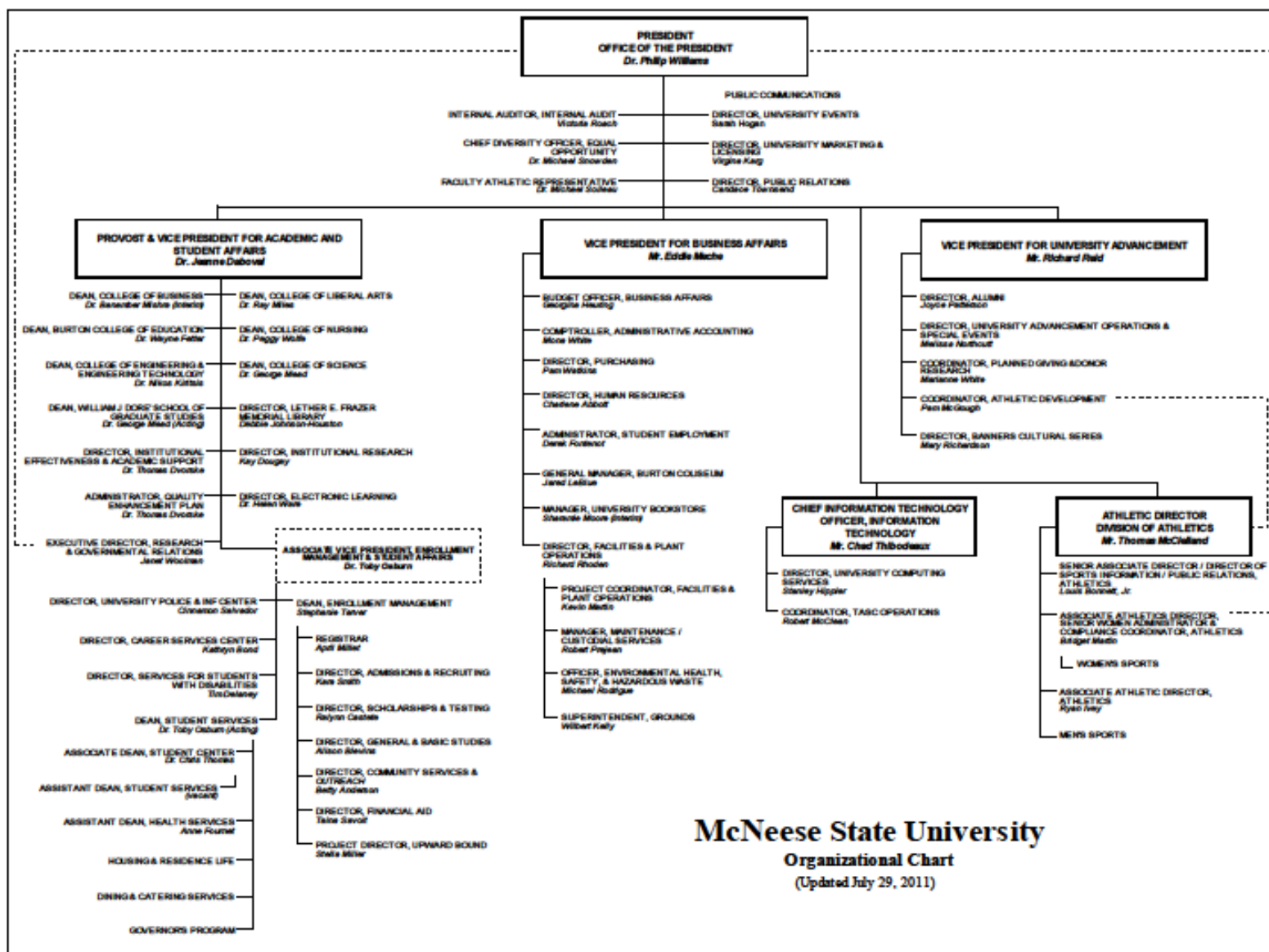
*Approved by the Board of Supervisors of the University of Louisiana System - 4/29/05*

## **Core Values**

- Academic Excellence
- Student Success
- Fiscal Responsibility
- University-Community Alliances







## Accreditation

McNeese State University is accredited by the Commission on Colleges of the Southern Association of Colleges and Schools, 1866 Southern Lane, Decatur, Georgia 30033-4097, P-404.679.4500, [www.sacscoc.org](http://www.sacscoc.org), to award associate, bachelor, master, and specialist degrees. A comprehensive list of other agencies included in the Board of Regents General Policy on Program Accreditation that have accredited or approved McNeese academic programs follows:

- AACSB International – The Association to Advance Collegiate Schools of Business International, 7777 South Harbor Island Blvd., Suite 750, Tampa, FL 33602-5730, P- (813) 769-6500, [www.aacsb.edu/](http://www.aacsb.edu/).
- AAFCS – American Association of Family and Consumer Sciences, 400 N. Columbus St., Suite 202, Alexandria, VA 22314, P- (703) 706-4600, [www.aafcs.org](http://www.aafcs.org).
- ACS – American Chemical Society, 1155 Sixteenth St. NW, Washington, DC 20036, P- (800) 227-5558, [www.acs.org](http://www.acs.org).
- CADE – Commission on Accreditation for Dietetics Education, American Dietetic Association, 120 S. Riverside Plaza, Suite 2000, Chicago, IL 60606-6995, P- (800)877-1600, [www.eatright.org](http://www.eatright.org).
- CAC/ABET Inc. – Computing Accreditation Commission of the Accreditation Board of Engineering and Technology, 111 Market Place, Suite 1050, Baltimore, MD 21202-4012, P- (410) 347.7700, [www.abet.org](http://www.abet.org).
- CCNE – Commission on Collegiate Nursing Education for American Association of College of Nursing, One Dupont Circle, NW, Suite 530, Washington, DC 20036, P- (202)463-6930, [www.aacn.nche.edu/index.htm](http://www.aacn.nche.edu/index.htm).
- EAC/ABET Inc. – Engineering Accreditation Commission of the Accreditation Board of Engineering and Technology, 111 Market Place, Suite 1050, Baltimore, MD 21202-4012, P- (410) 347-7700, [www.abet.org](http://www.abet.org).
- JRCERT – Joint Review Committee on Education in Radiologic Technology, 20 N. Wacker Drive, Suite 2850, Chicago, IL 60606-3182, P- (312) 704-5300, [www.jrcert.org](http://www.jrcert.org).
- NAACLS – National Accrediting Agency for Clinical Laboratory Sciences, 8410 W. Bryn Mawr Ave., Suite 670, Chicago, IL 60631, P- (773) 714-8880, [www.naacls.org](http://www.naacls.org).
- NASAD – National Association of Schools of Art and Design, 11250 Roger Bacon Dr., Suite 21, Reston, VA 20190, P-(703) 437-0700, <http://nasad.arts-accredit.org/>.
- NASM – National Association of Schools of Music, 11250 Roger Bacon Drive, Suite 21, Reston, VA 20190-5248, P-(703) 437-0700, <http://nasam.arts-accredit.org>.
- NCATE – National Council for Accreditation of Teacher Education, 2010 Massachusetts Ave. NW, Suite 500, Washington, DC 20036, P- (202) 466-7496, [www.ncate.org](http://www.ncate.org).
- NLNAC – National League for Nursing Accrediting Commission, 3343 Peachtree Road NE, Suite 850, Atlanta, GA 30326, P- (404) 975-5020, [www.nlnac.org](http://www.nlnac.org).
- TAC/ABET Inc. – Technology Accreditation Commission of the Accreditation Board of Engineering and Technology, 111 Market Place, Suite 1050, Baltimore, MD 21202-4012, P- (410) 347-7700, [www.abet.org](http://www.abet.org).

Other agencies that have approved or certified programs include:

- AAHPERD/NASPE – American Alliance for Health, Physical Education, Recreation and Dance/National Association for Sport and Physical Education
- ACEI – Association for Childhood Education International
- CEC – Council for Exceptional Children
- ISTE – International Society for Technology Education
- BESE – Louisiana Board of Elementary and Secondary Education
- ELCC – Educational Leaders Constituency Consortium
- LSBN – Louisiana State Board of Nursing
- NAEYC – National Association for the Education of Young Children
- NCAA – National Collegiate Athletic Association
- NCTE – National Council of Teachers of English
- NCTM – National Council of Teachers of Mathematics
- NSTA – National Science Teachers Association
- OAKE – Organization of American Kodály Educators



## Inventory of Degree Programs

General and Basic Studies		
General Studies		A.G.S.
General Studies		B.G.S.
College of Business		
Accounting		B.S.
Business Administration		M.B.A.
Finance		B.S.
General Business Administration		B.S.
Management		B.S.
Marketing		B.S.
Burton College of Education		
Athletic Training		B.S.
Business Education-Grades 6-12		B.S.
Curriculum and Instruction		M.Ed.
Early Childhood Education-Grades PK-3		B.S.
Educational Leadership		M.Ed.
Educational Leadership		Ed.S.
Educational Technology Leadership		M.Ed.
Elementary Education-Grades 1-5		B.S.
Elementary Education-Grades 1-5		M.A.T.
Health and Physical Education-Grades K-12		B.S.
Health and Human Performance, General		B.S.
Health and Human Performance		M.S.
Instructional Technology		M.S.
Psychology		B.S.
Psychology		M.A.
School Counseling		M.Ed.
Secondary Education-Grades 6-12		M.A.T.
Special Education		M.Ed.
College of Engineering & Engineering Technology		
Engineering		B.S.
Engineering		M. Eng.
Engineering Technology		A.S.
Engineering Technology		B.S.

<b>College of Liberal Arts</b>		
Art		B.A.
Art Education-Grades K-12		B.A.
Communication Studies		B.A.
Creative Writing		M.F.A.
Criminal Justice		B.S.
English		B.A.
English		M.A.
English Education-Grades 6-12		B.A.
Foreign Languages Education		B.A.
Government		B.A.
History		B.A.
Liberal Studies		B.A.
Mass Communication		B.S.
Music		B.M.
Music Education-Kodály Studies		P.B.C.
Paralegal Studies		A.A.
Social Studies Education-Grades 6-12		B.A.
Sociology		B.A.
Speech Education-Grades 6-12		B.S.
<b>College of Nursing</b>		
Nursing		A.D.N.
Nursing		B.S.N.
Nursing		M.S.N.
<b>College of Science</b>		
Agricultural Education-Grades 6-12		B.S.
Agricultural Sciences		B.S.
Biological Science		B.S.
Biology Education-Grades 6-12		B.S.
Chemistry		B.S.
Chemistry Education-Grades 6-12		B.S.
Clinical Laboratory Science		B.S.
Computer Information Technology		A.S.
Computer Science		B.S.
Environmental and Chemical Sciences		M.S.
Environmental Science Education-Grades 6-12		B.S.
Family and Consumer Sciences		B.S.
Family and Consumer Sciences Education-Grades 6 -12		B.S.
Mathematics Education-Grades 6-12		B.S.
Mathematical Sciences		M.S.
Mathematics		B.S.
Natural Resource Conservation Management		B.S.
Physics		B.S.
Radiologic Sciences		B.S.

This Page is Intentionally Left Blank

# Fall Enrollment

## Fall 2011

### Fall 2011 Enrollment by Level

	<u>Enrollment</u>	<u>Percent</u>
Undergraduate	7,802	88.7%
Graduate	989	11.3%
<b>Total</b>	<b>8,791</b>	<b>100.0%</b>

### Fall 2011 Full-Time Equivalent Enrollment by Level

	<u>SCH's</u>	<u>FTE</u>	<u>Percent</u>
Undergraduate	104,346	8,695.5 (12 hours)	91.8%
Graduate	6,994	777.1 (9 hours)	8.2%
<b>Total</b>	<b>111,340</b>	<b>9,472.6</b>	<b>100.0%</b>

### Fall 2011 Enrollment by Rank

	<u>Enrollment</u>	<u>Percent</u>
Early Admissions	660	7.5%
Freshman	2,427	27.6%
Sophomore	1,366	15.5%
Junior	1,227	14.0%
Senior	2,103	23.9%
Masters Candidate	785	8.9%
Education Specialist	4	0.1%
Special Graduate	188	2.1%
Non-Credit/Non-Degree	31	0.4%
<b>Total</b>	<b>8,791</b>	<b>100.0%</b>

### Fall 2011 Enrollment by Full-Time/Part-Time Status

	<u>Undergraduate</u>	<u>Graduate</u>	<u>Total</u>	<u>Percent</u>
Full-Time	6,144	385	6,529	74.3%
Part-Time	1,658	604	2,262	25.7%
<b>Total</b>	<b>7,802</b>	<b>989</b>	<b>8,791</b>	<b>100.0%</b>

### Fall 2011 Enrollment by Current Entry Status

	<u>Undergraduate</u>	<u>Graduate</u>	<u>Total</u>	<u>Percent</u>
Early Admissions	660		660	7.51%
Continuing	5,113	679	5,792	65.88%
First-Time Freshmen	1,383		1,383	15.73%
New Graduate		216	216	2.46%
Re-Entry	275	66	341	3.88%
Transfer	360	22	382	4.35%
Other Undergraduate	1		1	0.01%
Visiting	10	6	16	0.18%
<b>Total</b>	<b>7,802</b>	<b>989</b>	<b>8,791</b>	<b>100.00%</b>

### Fall 2011 Enrollment by Gender

	<u>Undergraduate</u>	<u>Graduate</u>	<u>Total</u>	<u>Percent</u>
Female	4,759	685	5,444	61.9%
Male	3,043	304	3,347	38.1%
<b>Total</b>	<b>7,802</b>	<b>989</b>	<b>8,791</b>	<b>100.0%</b>

### Fall 2011 Enrollment by Ethnicity

	<u>Undergraduate</u>	<u>Graduate</u>	<u>Total</u>	<u>Percent</u>
Amer Indian/Alaska Native	57	4	61	0.7%
Asian	82	8	90	1.0%
Black	1,384	165	1,549	17.6%
Foreign	286	90	376	4.3%
Hawaiian or Pacific Isl	4		4	0.1%
Hispanic	138	20	158	1.8%
White	5,763	696	6,459	73.5%
Two or More Races	54	4	58	0.6%
Race/Ethnicity Unknown	34	2	36	0.4%
<b>Total</b>	<b>7,802</b>	<b>989</b>	<b>8,791</b>	<b>100.0%</b>



### Fall 2011 Enrollment by Gender and Ethnicity

	<b><u>Female</u></b>	<b><u>Male</u></b>	<b><u>Total</u></b>	<b><u>Percent</u></b>
Amer Indian/Alaska Native	38	23	61	0.7%
Asian	51	39	90	1.0%
Black	1,054	495	1,549	17.6%
Foreign	159	217	376	4.3%
Hawaiian or Pacific Isl	1	3	4	0.1%
Hispanic	98	60	158	1.8%
White	3,982	2,477	6,459	73.5%
Two or More Races	38	20	58	0.6%
Race/Ethnicity Unknown	23	13	36	0.4%
<b><i>Total</i></b>	<b><i>5,444</i></b>	<b><i>3,347</i></b>	<b><i>8,791</i></b>	<b><i>100.0%</i></b>

### Fall 2011 Undergraduate Enrollment by Gender and Ethnicity

	<b><u>Female</u></b>	<b><u>Male</u></b>	<b><u>Total</u></b>	<b><u>Percent</u></b>
Amer Indian/Alaska Native	35	22	57	0.7%
Asian	45	37	82	1.0%
Black	929	455	1,384	17.7%
Foreign	120	166	286	3.7%
Hawaiian or Pacific Isl	1	3	4	0.1%
Hispanic	81	57	138	1.8%
White	3,491	2,272	5,763	73.9%
Two or More Races	36	18	54	0.7%
Race/Ethnicity Unknown	21	13	34	0.4%
<b><i>Total</i></b>	<b><i>4,759</i></b>	<b><i>3,043</i></b>	<b><i>7,802</i></b>	<b><i>100.%</i></b>

### Fall 2011 Graduate Enrollment by Gender and Ethnicity

	<b><u>Female</u></b>	<b><u>Male</u></b>	<b><u>Total</u></b>	<b><u>Percent</u></b>
Amer Indian/Alaska Native	3	1	4	0.4%
Asian	6	2	8	0.8%
Black	125	40	165	16.7%
Foreign	39	51	90	9.1%
Hispanic	17	3	20	2.0%
White	491	205	696	70.4%
Two or More Races	2	2	4	0.4%
Race/Ethnicity Unknown	2		2	0.2%
<b><i>Total</i></b>	<b><i>685</i></b>	<b><i>304</i></b>	<b><i>989</i></b>	<b><i>100.0%</i></b>

### Fall 2011 Undergraduate Enrollment by Rank and Ethnicity

	<b><u>EA</u></b>	<b><u>FR</u></b>	<b><u>SO</u></b>	<b><u>JR</u></b>	<b><u>SR</u></b>	<b><u>ND</u></b>	<b><u>Total</u></b>
Amer Indian/Alaska Native	3	23	8	6	17		57
Asian	8	25	12	11	25	1	82
Black	67	508	225	204	380		1,384
Foreign		75	52	42	113	4	286
Hawaiian or Pacific Isl	1	1		1	1		4
Hispanic	13	48	24	19	34		138
White	559	1,718	1,029	928	1,515	14	5,763
Two or More Races	4	16	13	11	10		54
Race/Ethnicity Unknown	4	14	3	5	8		34
<b><i>Total</i></b>	<b><i>659</i></b>	<b><i>2,428</i></b>	<b><i>1,366</i></b>	<b><i>1,227</i></b>	<b><i>2,103</i></b>	<b><i>19</i></b>	<b><i>7,802</i></b>

EA – Early Admissions  
FR- Freshman  
SO – Sophomore

JR – Junior  
SR – Senior  
ND – Non-Credit/Non-Degree

### Fall 2011 Graduate Enrollment by Rank and Ethnicity

	<b><u>MC</u></b>	<b><u>ES</u></b>	<b><u>SG</u></b>	<b><u>ND</u></b>	<b><u>Total</u></b>
Amer Indian/Alaska Native	4				4
Asian	5		3		8
Black	124	2	38	1	165
Foreign	89		1		90
Hispanic	16		4		20
White	543	2	140	11	696
Two or More Races	4				4
Race/Ethnicity Unknown			2		2
<b><i>Total</i></b>	<b><i>785</i></b>	<b><i>4</i></b>	<b><i>188</i></b>	<b><i>12</i></b>	<b><i>989</i></b>

MC – Masters Candidate  
ES – Education Specialist

SG – Special Graduate  
ND – Non-Credit/Non-Degree

### Fall 2011 Admissions Scores First-Time Full-Time Graduates

<b><u>Test</u></b>	<b><u>Average</u></b>
GMAT Total	479
GRE Combined Verbal/Quant	921

### Fall 2011 Enrollment by Age

	<u>Undergraduate</u>	<u>Graduate</u>	<u>Total</u>	<u>Percent</u>
Under 18	692		692	7.9%
18 – 19	2,199		2,199	25.0%
20 – 21	1,835	5	1,840	20.9%
22 – 24	1,399	237	1,636	18.6%
25 – 29	767	312	1,079	12.3%
30 – 34	370	164	534	6.1%
35 – 39	224	88	312	3.5%
40 – 49	215	117	332	3.8%
50 – 64	95	55	150	1.7%
Over 64	6	11	17	0.2%
<b>Total</b>	<b>7,802</b>	<b>989</b>	<b>8,791</b>	<b>100.0%</b>

### Fall 2011 Enrollment by Age Group

	<u>Undergraduate</u>	<u>Graduate</u>	<u>Total</u>	<u>Percent</u>
Under 25	6,125	242	6,367	72.4%
25 and Older	1,677	747	2,424	27.6%
<b>Total</b>	<b>7,802</b>	<b>989</b>	<b>8,791</b>	<b>100.0%</b>

### Fall 2011 Average Age

	<u>Average Age</u>	<u>Median Age</u>
All Students	23.7	21
First-Time Freshmen	18.8	18
Undergraduate	22.7	21
Graduate	31.6	28

## Fall 2011 Enrollment by Parish of Origin

<u>Parish</u>	<u>Enrollment</u>		<u>Parish</u>	<u>Enrollment</u>
Acadia	249		St John	5
Allen	353		St Landry	175
Ascension	14		St Martin	39
Assumption	6		St Mary	32
Avoyelles	4		St Tammany	38
Beauregard	543		Tangipahoa	11
Bienville	1		Tensas	1
Bossier	14		Terrebonne	16
Caddo	26		Vermilion	111
Calcasieu	4,402		Vernon	156
Caldwell	1		Washington	6
Cameron	217		Webster	3
Catahoula	1		West Baton Rouge	7
Concordia	3		West Carroll	2
DeSoto	6		West Feliciana	9
East Baton Rouge	72		Winn	2
East Feliciana	2			
Evangeline	143		Total Louisiana	7,825
Franklin	3		% of Total Enrollment	89.0%
Grant	16		Number of Parishes	59
Iberia	58			
Iberville	10			
Jackson	3		Five Parish Total	6,128
Jefferson	28		% of Total Enrollment	69.7%
Jefferson Davis	613			
Lafayette	173			
Lafourche	10			
LaSalle	4			
Lincoln	1			
Livingston	16			
Madison	2			
Morehouse	3			
Natchitoches	16			
Orleans	46			
Ouachita	22			
Pointe Coupee	27			
Rapides	68			
Richland	1			
Sabine	10			
St Bernard	1			
St Charles	19			
St Helena	1			
St James	5			

### Fall 2011 Enrollment by State of Origin

<u>State</u>	<u>Enrollment</u>
Alabama	3
Arizona	8
Arkansas	9
California	16
Colorado	6
Connecticut	1
Florida	9
Georgia	5
Illinois	4
Indiana	5
Iowa	2
Kansas	5
Kentucky	2
Louisiana	7,825
Maryland	2
Massachusetts	1
Michigan	3
Minnesota	2
Mississippi	16
Missouri	5
Nebraska	2
Nevada	1
New Hampshire	1
New Jersey	1
New Mexico	2
New York	3
North Carolina	4
Ohio	8
Oklahoma	4
Oregon	3
Pennsylvania	2
Rhode Island	1
South Carolina	2
Tennessee	4
Texas	390
Utah	1
Vermont	1
Virginia	3
Washington	1
Wisconsin	1
Total	8,364
Total Out of State	539
% Out of State of Total Enrollment	6.1%
Number of States (Other than Louisiana)	39



## Fall 2011 Enrollment by Foreign Country of Origin

<u>Country</u>	<u>Enrollment</u>		<u>Country</u>	<u>Enrollment</u>
Argentina	1		Thailand	9
Bangladesh	2		Togo	1
Benin	1		Tonga	1
Bolivia	7		Turkey	7
Brazil	2		Ukraine	1
Bulgaria	1		United Kingdom	4
Burundi	1		Venezuela	1
Cameroon	3		Vietnam	70
Canada	5			
China	50			
Colombia	13			
Costa Rica	1		Total Foreign	427
Cote d' Ivoire	1		% of Total Enrollment	4.9%
Croatia	2		Number of Countries (Other than USA)	52
Czech Republic	1			
Ecuador	5			
Ethiopia	1			
France	4			
Germany	2			
Ghana	1			
Greece	1			
Honduras	4			
India	42			
Indonesia	13			
Ireland	3			
Jamaica	6			
Japan	2			
Jordan	1			
Kenya	6			
Korea, Republic of	14			
Madagascar	1			
Mexico	5			
Nepal	90			
Nigeria	13			
Pakistan	2			
Peru	4			
Philippines	4			
Romania	5			
Russia	3			
Saudi Arabia	2			
Serbia	1			
Spain	1			
Sweden	2			
Taiwan	4			

### Fall 2011 Undergraduate Enrollment by Residency

	<b><u>Full-Time</u></b>	<b><u>Part-Time</u></b>	<b><u>Total</u></b>	<b><u>Percent</u></b>
Louisiana	5,398	1,615	7,013	89.9%
Out of state	434	27	461	5.9%
Foreign	312	16	328	4.2%
<b><i>Total</i></b>	<b><i>6,144</i></b>	<b><i>1,658</i></b>	<b><i>7,802</i></b>	<b><i>100.0%</i></b>

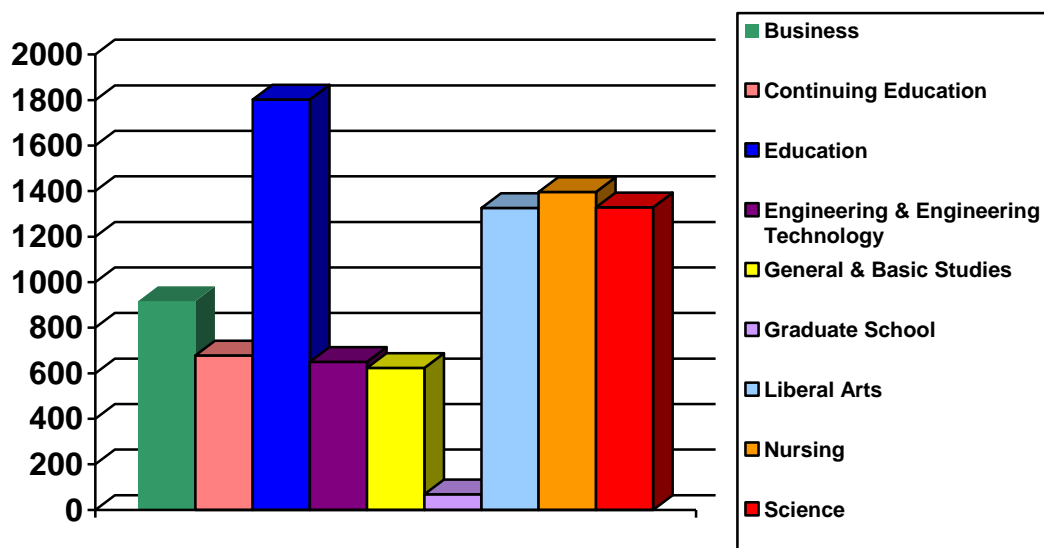
### Fall 2011 Graduate Enrollment by Residency

	<b><u>Full-Time</u></b>	<b><u>Part-Time</u></b>	<b><u>Total</u></b>	<b><u>Percent</u></b>
Louisiana	262	550	812	82.1%
Out of state	42	36	78	7.9%
Foreign	81	18	99	10.0%
<b><i>Total</i></b>	<b><i>385</i></b>	<b><i>604</i></b>	<b><i>989</i></b>	<b><i>100.0%</i></b>

This Page is Intentionally Left Blank

## Fall 2011 Enrollment by College

	<u>Undergraduate</u>	<u>Graduate</u>	<u>Total</u>	<u>Percent</u>
Business	840	77	917	10.4%
Continuing Education	668	10	678	7.7%
Education	1,221	581	1,802	20.5%
Engineering & Engineering Technology	611	39	650	7.4%
General & Basic Studies	624		624	7.1%
Graduate School		69	69	0.8%
Liberal Arts	1,290	36	1,326	15.1%
Nursing	1,292	104	1,396	15.9%
Science	1,256	73	1,329	15.1%
<b>Total</b>	<b>7,802</b>	<b>989</b>	<b>8,791</b>	<b>100.0%</b>



### Historical Fall Undergraduate Enrollment by College

	<b><u>2007</u></b>	<b><u>2008</u></b>	<b><u>2009</u></b>	<b><u>2010</u></b>	<b><u>2011</u></b>
Business	975	1,013	871	849	840
Continuing Education*	12	10	505	709	668
Education	1,168	1,143	1,214	1,239	1,221
Engineering & Engineering Technology	528	579	582	624	611
General & Basic Studies*	1,010	1,099	749	685	624
Liberal Arts	1,004	1,037	1,113	1,185	1,290
Nursing	1,139	1,181	1,244	1,329	1,292
Science	1,217	1,220	1,257	1,261	1,256
<b><i>Total</i></b>	<b><i>7,053</i></b>	<b><i>7,282</i></b>	<b><i>7,535</i></b>	<b><i>7,881</i></b>	<b><i>7,802</i></b>

\* In Fall 2009, Early Admissions was moved from General & Basic Studies to Continuing Education.

### Historical Fall Graduate Enrollment by College

	<b><u>2007</u></b>	<b><u>2008</u></b>	<b><u>2009</u></b>	<b><u>2010</u></b>	<b><u>2011</u></b>
Business	80	99	105	87	77
Continuing Education	20	12	11	11	10
Education	576	567	622	636	581
Engineering & Engineering Technology	100	71	80	55	39
Graduate School	54	77	71	66	69
Liberal Arts	34	38	34	35	36
Nursing	82	88	89	84	104
Science	96	60	98	86	73
<b><i>Total</i></b>	<b><i>1,042</i></b>	<b><i>1,012</i></b>	<b><i>1,110</i></b>	<b><i>1,060</i></b>	<b><i>989</i></b>



## Fall 2011 Enrollment by College and Department

<b>College</b>	<b>Department Name</b>	<b>Undergraduate</b>	<b>Graduate</b>	<b>Total</b>
Business	Accounting, Fin, & Economics	361		361
	Mgmt, Marketing and Bus Admin	479	77	556
<b>College of Business Total</b>		<b>840</b>	<b>77</b>	<b>917</b>
Continuing Education	Continuing Education	668	10	678
<b>Continuing Education Total</b>		<b>668</b>	<b>10</b>	<b>678</b>
Education	Education Professions	487	188	675
	Health & Human Performance	448	53	501
	Psychology	286	81	367
	Student Teaching & Field Experience		259	259
<b>College of Education Total</b>		<b>1,221</b>	<b>581</b>	<b>1,802</b>
Engineering & Engineering Technology	Engineering	501	39	540
	Engineering Technology	110		110
<b>College of Engineering &amp; Engineering Technology Total</b>		<b>611</b>	<b>39</b>	<b>650</b>
General & Basic Studies	Basic Studies	624		624
<b>General &amp; Basic Studies Total</b>		<b>624</b>		<b>624</b>
Graduate School	Graduate School		69	69
<b>Graduate School Total</b>			<b>69</b>	<b>69</b>
Liberal Arts	English & Foreign Languages	164	36	200
	History	137		137
	Mass Communication	176		176
	Performing Arts	121		121
	Social Sciences	527		527
	Visual Arts	165		165
<b>College of Liberal Arts Total</b>		<b>1,290</b>	<b>36</b>	<b>1,326</b>
Nursing	Graduate Nursing		104	104
	Undergraduate Nursing	1,292		1,292
<b>College of Nursing Total</b>		<b>1,292</b>	<b>104</b>	<b>1,396</b>
Science	Agriculture	380	33	413
	Biology & Health Sciences	572		572
	Chemistry	106	17	123
	Math, Computer Science, & Stat	190	23	213
	Physics	8		8
<b>College of Science Total</b>		<b>1,256</b>	<b>73</b>	<b>1,329</b>
<b>University Total</b>		<b>7,802</b>	<b>989</b>	<b>8,791</b>

## Fall 2011 Undergraduate Enrollment by College and Department

<u>College</u>	<u>Department Name</u>	<u>Full-Time</u>	<u>Part-Time</u>	<u>Total</u>
Business	Accounting, Fin, & Economics	319	42	361
	Mgmt, Marketing and Bus Admin	417	62	479
<b><i>College of Business Total</i></b>		<b>736</b>	<b>104</b>	<b>840</b>
Continuing Education	Continuing Education	5	663	668
<b><i>Continuing Education Total</i></b>		<b>5</b>	<b>663</b>	<b>668</b>
Education	Education Professions	401	86	487
	Health & Human Performance	414	34	448
	Psychology	251	35	286
<b><i>College of Education Total</i></b>		<b>1,066</b>	<b>155</b>	<b>1,221</b>
Engineering & Engineering Technology	Engineering	459	42	501
	Engineering Technology	87	23	110
<b><i>College of Engineering &amp; Engineering Technology Total</i></b>		<b>546</b>	<b>65</b>	<b>611</b>
General & Basic Studies	Basic Studies	487	137	624
<b><i>General &amp; Basic Studies Total</i></b>		<b>487</b>	<b>137</b>	<b>624</b>
Liberal Arts	English & Foreign Languages	148	16	164
	History	112	25	137
	Mass Communication	169	7	176
	Performing Arts	116	5	121
	Social Sciences	448	79	527
	Visual Arts	142	23	165
<b><i>College of Liberal Arts Total</i></b>		<b>1,135</b>	<b>155</b>	<b>1,290</b>
Nursing	Undergraduate Nursing	1,015	277	1,292
<b><i>College of Nursing Total</i></b>		<b>1,015</b>	<b>277</b>	<b>1,292</b>
Science	Agriculture	347	33	380
	Biology & Health Sciences	531	41	572
	Chemistry	100	6	106
	Math, Computer Science, & Stat	168	22	190
	Physics	8		8
<b><i>College of Science Total</i></b>		<b>1,154</b>	<b>102</b>	<b>1,256</b>
<b>University Total</b>		<b>6,144</b>	<b>1,658</b>	<b>7,802</b>

## Fall 2011 Graduate Enrollment by College and Department

<b><u>College</u></b>	<b><u>Department Name</u></b>	<b><u>Full-Time</u></b>	<b><u>Part-Time</u></b>	<b><u>Total</u></b>
Business	Mgmt, Marketing and Bus Admin	45	32	77
<b><i>College of Business Total</i></b>		<b>45</b>	<b>32</b>	<b>77</b>
Continuing Education	Continuing Education		10	10
<b><i>Continuing Education Total</i></b>			<b>10</b>	<b>10</b>
Education	Education Profession	41	147	188
	Health & Human Performance	42	11	53
	Psychology	55	26	81
	Student Teaching & Field Experience	78	181	259
<b><i>College of Education Total</i></b>		<b>216</b>	<b>365</b>	<b>581</b>
Engineering & Engineering Technology	Engineering	21	18	39
<b><i>College of Engineering &amp; Engineering Technology Total</i></b>		<b>21</b>	<b>18</b>	<b>39</b>
Graduate School	Graduate School	9	60	69
<b><i>Graduate School Total</i></b>		<b>9</b>	<b>60</b>	<b>69</b>
Liberal Arts	English & Foreign Languages	29	7	36
<b><i>College of Liberal Arts Total</i></b>		<b>29</b>	<b>7</b>	<b>36</b>
Nursing	Graduate Nursing	10	94	104
<b><i>College of Nursing Total</i></b>		<b>10</b>	<b>94</b>	<b>104</b>
Science	Agriculture	23	10	33
	Chemistry	15	2	17
	Math, Computer Science, & Stat	17	6	23
<b><i>College of Science Total</i></b>		<b>55</b>	<b>18</b>	<b>73</b>
<b>University Total</b>		<b>385</b>	<b>604</b>	<b>989</b>

## Historical Fall Undergraduate Enrollment by College and Department

<b><u>College</u></b>	<b><u>Department Name</u></b>	<b><u>2007</u></b>	<b><u>2008</u></b>	<b><u>2009</u></b>	<b><u>2010</u></b>	<b><u>2011</u></b>
Business	Accounting, Fin, & Economics	335	349	342	348	361
	Mgmt, Marketing and Gen Bus	640	664	529	501	479
<b><i>College of Business Total</i></b>		<b>975</b>	<b>1,013</b>	<b>871</b>	<b>849</b>	<b>840</b>
Continuing Education	Continuing Education*	12	10	505	709	668
<b><i>Continuing Education Total</i></b>		<b>12</b>	<b>10</b>	<b>505</b>	<b>709</b>	<b>668</b>
Education	Education Professions#					487
	Educ Leadership & Instr Tech#	20	20	29	30	
	Health & Human Performance	381	394	418	436	448
	Psychology	244	238	241	245	286
	Teacher Education#	523	491	526	528	
<b><i>College of Education Total</i></b>		<b>1,168</b>	<b>1,143</b>	<b>1,214</b>	<b>1,239</b>	<b>1,221</b>
Engineering & Engineering Technology	Engineering	372	409	430	489	501
	Engineering Technology	156	170	152	135	110
<b><i>College of Engineering &amp; Engineering Technology Total</i></b>		<b>528</b>	<b>579</b>	<b>582</b>	<b>624</b>	<b>611</b>
General & Basic Studies	Basic Studies*	1,010	1,099	749	685	624
<b><i>Gen &amp; Basic Studies Total</i></b>		<b>1,010</b>	<b>1,099</b>	<b>749</b>	<b>685</b>	<b>624</b>
Liberal Arts	English & Foreign Languages	131	141	134	173	164
	History	132	129	150	154	137
	Mass Communication	154	164	164	175	176
	Performing Arts	99	104	120	131	121
	Social Sciences%	317	327	367	372	527
	Visual Arts	171	172	178	180	165
<b><i>College of Liberal Arts Total</i></b>		<b>1,004</b>	<b>1,037</b>	<b>1,113</b>	<b>1,185</b>	<b>1,290</b>
Nursing	Undergraduate Nursing	1,139	1,181	1,244	1,329	1,292
<b><i>College of Nursing Total</i></b>		<b>1,139</b>	<b>1,181</b>	<b>1,244</b>	<b>1,329</b>	<b>1,292</b>
Science	Agriculture^%	225	236	305	307	380
	Biological & Envr Sciences^	608	600			
	Biology & Health Sciences^			532	533	572
	Chemistry	91	108	111	90	106
	Math, Computer Science, & Stat	165	170	180	190	190
	Nutrition and Family Studies%	118	97	110	123	
	Physics	10	9	19	18	8
<b><i>College of Science Total</i></b>		<b>1,217</b>	<b>1,220</b>	<b>1,257</b>	<b>1,261</b>	<b>1,256</b>
<b><i>University Total</i></b>		<b>7,053</b>	<b>7,282</b>	<b>7,535</b>	<b>7,881</b>	<b>7,802</b>

\* In Fall 2009, Early Admissions was moved from General & Basic Studies to Continuing Education.

^In Fall 2009 Environmental Science enrollment was moved from Biological & Environmental Sciences to Agriculture.

#In Fall 2011 Educ Leadership & Instr Tech and Teacher Education were combined into Education Professions.

%In Fall 2011 Nutrition and Family Studies was split between Social Sciences and Agriculture.

## Historical Fall Graduate Enrollment by College and Department

<b><u>College</u></b>	<b><u>Department Name</u></b>	<b><u>2007</u></b>	<b><u>2008</u></b>	<b><u>2009</u></b>	<b><u>2010</u></b>	<b><u>2011</u></b>
Business	Mgmt, Marketing and Gen Bus	80	99	105	87	77
<b><i>College of Business Total</i></b>		<b>80</b>	<b>99</b>	<b>105</b>	<b>87</b>	<b>77</b>
Continuing Education	Continuing Education	20	12	11	11	10
<b><i>Continuing Education Total</i></b>		<b>20</b>	<b>12</b>	<b>11</b>	<b>11</b>	<b>10</b>
Education	Education Professions#					188
	Educ Leadership & Instr Tech#	117	115	124	126	
	Health & Human Performance	26	39	46	48	53
	Psychology	67	63	64	75	81
	Student Teaching and Field Experience#					259
	Teacher Education#	366	350	388	387	
<b><i>College of Education Total</i></b>		<b>576</b>	<b>567</b>	<b>622</b>	<b>636</b>	<b>581</b>
Engineering & Engineering Tech	Engineering	100	71	80	55	39
<b><i>College of Engineering &amp; Engineering Technology Total</i></b>		<b>100</b>	<b>71</b>	<b>80</b>	<b>55</b>	<b>39</b>
Graduate School	Graduate School	54	77	71	66	69
<b><i>Graduate School Total</i></b>		<b>54</b>	<b>77</b>	<b>71</b>	<b>66</b>	<b>69</b>
Liberal Arts	English & Foreign Languages	28	33	30	34	36
	Performing Arts	6	5	4	1	
<b><i>College of Liberal Arts Total</i></b>		<b>34</b>	<b>38</b>	<b>34</b>	<b>35</b>	<b>36</b>
Nursing	Graduate Nursing	82	88	89	84	104
<b><i>College of Nursing Total</i></b>		<b>82</b>	<b>88</b>	<b>89</b>	<b>84</b>	<b>104</b>
Science	Agriculture*	8	11	25	34	33
	Biological & Envr Sciences*	7	9			
	Chemistry	11	14	18	14	17
	Math, Computer Science, & Stat	62	26	55	38	23
	Nutrition and Family Studies	8				
<b><i>College of Science Total</i></b>		<b>96</b>	<b>60</b>	<b>98</b>	<b>86</b>	<b>73</b>
<b>University Total</b>		<b>1,042</b>	<b>1,012</b>	<b>1,110</b>	<b>1,060</b>	<b>989</b>

\*In Fall 2009 Environmental Science enrollment was moved from Biological & Environmental Sciences to Agriculture.

#In Fall 2011 Educ Leadership & Instr Tech and Teacher Education were combined into Education Professions and Alt Cert were moved to Student Teaching and Field Experience.

### Fall 2011 Enrollment by Department and Major

<u>College/Department</u>	<u>Major</u>	<u>Undergraduate</u>	<u>Graduate</u>	<u>Total</u>
<b>Business</b>				
Accounting, Fin & Economics	Accounting	260		260
	Finance	100		100
	Undeclared	1		1
<i>Department Total</i>		<i>361</i>		<i>361</i>
Mgmt, Marketing, & Gen Bus	Business Administration		77	77
	Gen Business Administration	192		192
	Management	181		181
	Marketing	102		102
	Undeclared	4		4
<i>Department Total</i>		<i>479</i>	<i>77</i>	<i>556</i>
<i>College of Business Total</i>		<i>840</i>	<i>77</i>	<i>917</i>
<b>Continuing Education</b>				
Continuing Education	EASE Program	9	10	19
	Undeclared	659		659
<i>Department Total</i>		<i>668</i>	<i>10</i>	<i>678</i>
<i>Continuing Education Total</i>		<i>668</i>	<i>10</i>	<i>678</i>
<b>Education</b>				
Education Professions	Business Education – Grades 6-12	21		21
	Curriculum and Instruction		19	19
	Early Childhood Education	1		1
	Early Childhood Educ – Grades PK- 3	225		225
	Educational Leadership		70	70
	Educational Technology Leadership		17	17
	Elementary Education – Grades 1–5	225		225
	Instructional Technology		31	31
	School Counseling		41	41
	Secondary Education	1		1
	Secondary Education and Teaching	7		7
	Special Education		10	10
	Special Education, General	6		6
	Undeclared	1		1
<i>Department Total</i>		<i>487</i>	<i>188</i>	<i>675</i>

### Fall 2011 Enrollment by Department and Major (continued)

<u>College/Department</u>	<u>Major</u>	<u>Undergraduate</u>	<u>Graduate</u>	<u>Total</u>
Health & Human Performance	Athletic Training	83		83
	Health & Human Performance		53	53
	Health & Human Performance, Education	4		4
	Health & Human Performance, General	223		223
	Health & Physical Education, Gr K-12	138		138
<i>Department Total</i>		<i>448</i>	<i>53</i>	<i>501</i>
Psychology	Psychology	286	81	367
<i>Department Total</i>		<i>286</i>	<i>81</i>	<i>367</i>
Student Teaching and Field Experience	Add-on Teacher Certification		12	12
	Alt Certification – Grades 1-12 Mild/Moderate Sp Ed		6	6
	Alt Certification – Grades K-12 Health & Physical Ed		3	3
	Alt Certification – Grades 1-5		33	33
	Alt Certification – Grade 6-12		45	45
	Alt Certification – K-12 Art Ed		5	5
	Alt Certification – Grades PK-3		12	12
	Elementary Education – Grades 1–5		56	56
	School Librarian [Add on Cert]		5	5
	Secondary Education Grades 6-12		74	74
	Special Education, Mild/Mod Gr 1-12		8	8
<i>Department Total</i>			<i>259</i>	<i>259</i>
<i>College of Education Total</i>		<i>1,221</i>	<i>581</i>	<i>1,802</i>
<b>Engineering &amp; Engineering Technology</b>				
Engineering	Engineering	498	39	537
	Undeclared	3		3
<i>Department Total</i>		<i>501</i>	<i>39</i>	<i>540</i>
Engineering Technology	Engineering Technology	110		110
<i>Department Total</i>		<i>110</i>		<i>110</i>
<i>College of Engineering &amp; Engineering Technology Total</i>		<i>611</i>	<i>39</i>	<i>650</i>

## Fall 2011 Enrollment by Department and Major (continued)

<u>College/Department</u>	<u>Major</u>	<u>Undergraduate</u>	<u>Graduate</u>	<u>Total</u>
<b>General &amp; Basic Studies</b>				
Basic Studies	Basic Studies	167		167
	General Studies	456		456
	Undeclared	1		1
<i>Department Total</i>		<b>624</b>		<b>624</b>
<b>General &amp; Basic Studies Total</b>		<b>624</b>		<b>624</b>
<b>Graduate School</b>				
Graduate School	Non-degree		69	69
<i>Department Total</i>			<b>69</b>	<b>69</b>
<b>Graduate School Total</b>			<b>69</b>	<b>69</b>
<b>Liberal Arts</b>				
English & Foreign Languages	Creative Writing		18	18
	English	91	18	109
	English Education Grades 6 – 12	46		46
	Foreign Language Education Gr 6-12	1		1
	Foreign Languages	20		20
	French	2		2
	General Studies	1		1
	Spanish	3		3
<i>Department Total</i>		<b>164</b>	<b>36</b>	<b>200</b>
History	History	78		78
	Liberal Studies	30		30
	Social Studies Education Gr 6 – 12	29		29
<i>Department Total</i>		<b>137</b>		<b>137</b>
Mass Communication	Communication Studies	6		6
	Mass Communication	169		169
	Speech Education Grades 6-12	1		1
<i>Department Total</i>		<b>176</b>		<b>176</b>
Performing Arts	Liberal Studies	8		8
	Music	28		28
	Music Education	1		1
	Music Educ–Instrumental, Gr K-12	42		42
	Music Education – Vocal, Gr K-12	16		16
	Music Performance	14		14
	Theatre Arts	12		12
<i>Department Total</i>		<b>121</b>		<b>121</b>



### Fall 2011 Enrollment by Department and Major (continued)

<u>College/Department</u>	<u>Major</u>	<u>Undergraduate</u>	<u>Graduate</u>	<u>Total</u>
Social Sciences	Criminal Justice	186		186
	Criminal Justice Online	82		82
	Family and Consumer Sciences	74		74
	General Studies	7		7
	Government	38		38
	Paralegal Studies	42		42
	Sociology	98		98
<i>Department Total</i>		<i>527</i>		<i>527</i>
Visual Arts	Art	136		136
	Art Education	4		4
	Art Education – Grades K – 12	25		25
<i>Department Total</i>		<i>165</i>		<i>165</i>
<b>College of Liberal Arts Total</b>		<b>1,290</b>	<b>36</b>	<b>1,326</b>
<b>Nursing</b>				
Graduate Nursing	Nursing		104	104
<i>Department Total</i>			<i>104</i>	<i>104</i>
Undergraduate Nursing	Nursing	1,274		1,274
	Nursing Online Program	18		18
<i>Department Total</i>		<i>1,292</i>		<i>1,292</i>
<b>College of Nursing Total</b>		<b>1,292</b>		<b>1,292</b>
<b>Science</b>				
Agriculture	Agricultural Education – Grs 6 – 12	15		15
	Agricultural Sciences	247		247
	Environmental & Chemical Sciences		33	33
	Environmental Science	1		1
	Family and Consumer Sciences	31		31
	Natural Resource Conservation Mgmt	67		67
	Nutrition and Food Sciences	10		10
	Secondary Education and Teaching	1		1
	Undeclared	1		1
	Wildlife Management	7		7
<i>Department Total</i>		<i>380</i>	<i>33</i>	<i>413</i>

### Fall 2011 Enrollment by Department and Major (continued)

<u>College/Department</u>	<u>Major</u>	<u>Undergraduate</u>	<u>Graduate</u>	<u>Total</u>
Biology & Health Sciences	Biological Science	284		284
	Biology Education – Grades 6 – 12	13		13
	Clinical Laboratory Science	69		69
	Radiologic Technology	206		206
<i>Department Total</i>		572		572
Chemistry	Chemistry	104		104
	Chemistry Education – Grades 6-12	1		1
	Environmental & Chemical Sciences		17	17
	Secondary Education and Teaching	1		1
<i>Department Total</i>		106	17	123
Math, Computer Sci and Stat	Computer Information Tech	20		20
	Computer Science	96		96
	Mathematical Sciences	29	23	52
	Mathematics	15		15
	Mathematics Education – Grades 6-12	30		30
<i>Department Total</i>		190	23	213
Physics	Mathematical Sciences	1		1
	Physics	7		7
<i>Department Total</i>		8		8
<i>College of Science Total</i>		1,256	73	1,329
<b>University Total</b>		<b>7,802</b>	<b>989</b>	<b>8,791</b>

Undergraduates taking developmental classes	551	7.1%
---	-----	------

### Historical Fall Enrollment Data Since 1939

<u>Fall</u>	<u>Under-graduate</u>	<u>Graduate</u>	<u>Total</u>		<u>Fall</u>	<u>Under-graduate</u>	<u>Graduate</u>	<u>Total</u>
<b>2011</b>	7,802	989	8,791		<b>1974</b>	4,841	845	5,686
<b>2010</b>	7,881	1,060	8,941		<b>1973</b>	4,922	915	5,837
<b>2009</b>	7,535	1,110	8,645		<b>1972</b>	5,226	959	6,185
<b>2008</b>	7,282	1,012	8,294		<b>1971</b>	5,067	958	6,025
<b>2007</b>	7,053	1,042	8,095		<b>1970</b>	4,844	750	5,594
<b>2006</b>	7,336	1,007	8,343		<b>1969</b>	4,568	582	5,150
<b>2005</b>	7,847	1,145	8,992		<b>1968</b>	4,618	472	5,090
<b>2004</b>	7,724	1,060	8,784		<b>1967</b>	4,234	308	4,542
<b>2003</b>	7,330	1,117	8,447		<b>1966</b>	3,983	333	4,316
<b>2002</b>	7,010	1,019	8,029		<b>1965</b>	3,512	295	3,807
<b>2001</b>	6,845	935	7,780		<b>1964</b>	3,149	211	3,360
<b>2000</b>	6,731	901	7,632		<b>1963</b>	2,663	164	2,827
<b>1999</b>	6,865	1,014	7,879		<b>1962</b>	2,999	132	3,131
<b>1998</b>	6,978	1,017	7,995		<b>1961</b>	2,848	98	2,946
<b>1997</b>	7,050	1,087	8,137		<b>1960</b>	2,697		2,697
<b>1996</b>	7,063	1,024	8,087		<b>1959</b>	2,502		2,502
<b>1995</b>	7,381	1,063	8,444		<b>1958</b>	2,444		2,444
<b>1994</b>	7,658	1,071	8,729		<b>1957</b>	2,024		2,024
<b>1993</b>	7,347	1,057	8,404		<b>1956</b>	1,916		1,916
<b>1992</b>	7,316	1,158	8,474		<b>1955</b>	1,661		1,661
<b>1991</b>	6,818	1,013	7,831		<b>1954</b>	1,367		1,367
<b>1990</b>	6,662	1,062	7,724		<b>1953</b>	1,192		1,192
<b>1989</b>	6,557	1,022	7,579		<b>1952</b>	993		993
<b>1988</b>	6,383	1,040	7,423		<b>1951</b>	905		905
<b>1987</b>	6,457	1,036	7,493		<b>1950</b>	501		501
<b>1986</b>	6,430	950	7,380		<b>1949</b>	397		397
<b>1985</b>	6,650	1,174	7,824		<b>1948</b>	575		575
<b>1984</b>	6,645	1,336	7,981		<b>1947</b>	615		615
<b>1983</b>	6,491	1,535	8,026		<b>1946</b>	640		640
<b>1982</b>	5,888	1,463	7,351		<b>1945</b>	233		233
<b>1981</b>	5,461	1,556	7,017		<b>1944</b>	131		131
<b>1980</b>	4,700	691	5,391		<b>1943</b>	146		146
<b>1979</b>	4,435	721	5,156		<b>1942</b>	169		169
<b>1978</b>	4,626	750	5,376		<b>1941</b>	223		223
<b>1977</b>	4,883	642	5,525		<b>1940</b>	242		242
<b>1976</b>	5,048	758	5,806		<b>1939</b>	254		254
<b>1975</b>	5,058	955	6,013					

This Page is Intentionally Left Blank

## First-Time Freshmen

### Fall 2011 First-Time Freshmen by Full-Time/Part-Time Status

	<b><u>Total</u></b>	<b><u>Percent</u></b>
Full-Time	1,333	96.4%
Part-Time	50	3.6%
<b><i>Total</i></b>	<b><i>1,383</i></b>	<b><i>100.0%</i></b>

### Fall 2011 First-Time Freshmen by Gender

	<b><u>Full-Time</u></b>	<b><u>Part-Time</u></b>	<b><u>Total</u></b>	<b><u>Percent</u></b>
Female	787	32	819	59.2%
Male	546	18	564	40.8%
<b><i>Total</i></b>	<b><i>1,333</i></b>	<b><i>50</i></b>	<b><i>1,383</i></b>	<b><i>100.0%</i></b>

### Fall 2011 First-Time Freshmen by Ethnicity

	<b><u>Full-Time</u></b>	<b><u>Part-Time</u></b>	<b><u>Total</u></b>	<b><u>Percent</u></b>
Amer Indian/Alaska Native	16		16	1.1%
Asian	10	1	11	0.8%
Black	260	12	272	19.7%
Foreign	22		22	1.6%
Hawaiian or Pacific Isl	1		1	0.1%
Hispanic	30		30	2.2%
White	977	36	1,013	73.2%
Two or more races	10		10	0.7%
Race/Ethnicity Unknown	7	1	8	0.6%
<b><i>Total</i></b>	<b><i>1,333</i></b>	<b><i>50</i></b>	<b><i>1,383</i></b>	<b><i>100.0%</i></b>

### Fall 2011 First-Time Freshmen Admissions

	<b><u>Total</u></b>
Applied	2,964
Accepted	2,035
Enrolled Full-Time	1,333
Enrolled Part-Time	50

### ACT Class Profile First-Time Full-Time Degree Seeking Freshman

	<b><u>Avg ACT</u></b>
Fall 2010	21.4
Fall 2009	21.3

### Fall 2011 First-Time Freshmen by Parish of Origin

Parish	Enrollment	Parish	Enrollment
Acadia	32		
Allen	48	Total Louisiana	1,237
Ascension	1	% of Total FTF	89.5%
Assumption	2	Number of Parishes	43
Avoyelles	1		
Beauregard	85		
Bossier	3	Five Parish Total	937
Caddo	6	% of Total FTF	67.8%
Calcasieu	670		
Caldwell	1		
Cameron	36		
DeSoto	1		
East Baton Rouge	18		
Evangeline	17		
Grant	4		
Iberia	12		
Iberville	1		
Jefferson	4		
Jefferson Davis	98		
Lafayette	25		
Lafourche	5		
LaSalle	1		
Livingston	4		
Orleans	12		
Ouachita	2		
Pointe Coupee	2		
Rapides	13		
Richland	1		
Sabine	1		
St Charles	6		
St Helena	1		
St John	1		
St Landry	39		
St Martin	2		
St Mary	4		
St Tammany	7		
Terrebonne	4		
Vermilion	27		
Vernon	31		
Washington	2		
West Feliciana	1		

## Fall 2011 First-Time Freshmen by State of Origin

<u>State</u>	<u>Enrollment</u>
Arizona	1
Arkansas	2
California	2
Colorado	1
Florida	2
Illinois	1
Indiana	1
Kansas	1
Kentucky	1
Louisiana	1,237
Maryland	1
Michigan	1
Mississippi	1
Missouri	1
New Mexico	1
New York	1
North Carolina	1
Ohio	2
Oklahoma	1
Tennessee	1
Texas	97
Utah	1
Vermont	1
Total	1,359
Total Out of State	122
% of Total FTF	8.8%
Number of States (Other than Louisiana)	22

### Fall 2011 First-Time Freshmen by Foreign Country of Origin

<u>Country</u>	<u>Enrollment</u>
Bolivia	2
Canada	2
China	2
Colombia	1
Czech Republic	1
Greece	1
India	1
Indonesia	1
Japan	1
Jordan	1
Nepal	3
Nigeria	1
Romania	2
Turkey	1
Vietnam	4
Total Foreign	24
% of Total FTF	1.7%
Number of Countries (Other than USA)	15

### Fall 2011 First-Time Freshmen by Residency

	<u>Full-Time</u>	<u>Part-Time</u>	<u>Total</u>	<u>Percent</u>
Louisiana	1,190	47	1,237	89.5%
Out of state	119	3	122	8.8%
Foreign	24		24	1.7%
<b>Total</b>	<b>1,333</b>	<b>50</b>	<b>1,383</b>	<b>100.0%</b>



### Fall 2011 First-Time Freshmen Enrollment by College

	<b><u>Full-Time</u></b>	<b><u>Part-Time</u></b>	<b><u>Total</u></b>	<b><u>Percent</u></b>
Business	126	3	129	9.4%
Education	194	4	198	14.3%
Engineering & Engineering Technology	145	3	148	10.7%
General & Basic Studies	134	25	159	11.5%
Liberal Arts	167	6	173	12.5%
Nursing	247	5	252	18.2%
Science	320	4	324	23.4%
<b><i>Total</i></b>	<b><i>1,333</i></b>	<b><i>50</i></b>	<b><i>1,383</i></b>	<b><i>100.0%</i></b>

### Historical Fall First-Time Freshmen Enrollment by College

	<b><u>2007</u></b>	<b><u>2008</u></b>	<b><u>2009</u></b>	<b><u>2010</u></b>	<b><u>2011</u></b>
Business	125	150	104	116	129
Continuing Education	3				
Education	167	192	195	194	198
Engineering & Engineering Technology	125	116	114	136	148
General & Basic Studies	251	187	217	174	159
Liberal Arts	139	181	173	171	173
Nursing	212	197	210	267	252
Science	279	319	304	274	324
<b><i>Total</i></b>	<b><i>1,301</i></b>	<b><i>1,342</i></b>	<b><i>1,317</i></b>	<b><i>1,332</i></b>	<b><i>1,383</i></b>

## Fall 2011 First-Time Freshmen by College and Department

<u>College</u>	<u>Department</u>	<u>Full-Time</u>	<u>Part-Time</u>	<u>Total</u>
Business	Accounting, Fin & Economics	47	1	48
	Mgmt, Marketing, & Bus Admin	79	2	81
<b><i>College of Business Total</i></b>		<b><i>126</i></b>	<b><i>3</i></b>	<b><i>129</i></b>
Education	Education Professions	51	3	54
	Health & Human Performance	89	1	90
	Psychology	54		54
<b><i>College of Education Total</i></b>		<b><i>194</i></b>	<b><i>4</i></b>	<b><i>198</i></b>
Engineering & Engineering Technology	Engineering	130	1	131
	Engineering Technology	15	2	17
<b><i>College of Engineering &amp; Engineering Technology Total</i></b>		<b><i>145</i></b>	<b><i>3</i></b>	<b><i>148</i></b>
General & Basic Studies	Basic Studies	134	25	159
<b><i>General &amp; Basic Studies Total</i></b>		<b><i>134</i></b>	<b><i>25</i></b>	<b><i>159</i></b>
Liberal Arts	English & Foreign Languages	20		20
	History	14		14
	Mass Communication	19		19
	Performing Arts	29		29
	Social Sciences	61	6	67
	Visual Arts	24		24
<b><i>College of Liberal Arts Total</i></b>		<b><i>167</i></b>	<b><i>6</i></b>	<b><i>173</i></b>
Nursing	Undergraduate Nursing	247	5	252
<b><i>College of Nursing Total</i></b>		<b><i>247</i></b>	<b><i>5</i></b>	<b><i>252</i></b>
Science	Agriculture	81		81
	Biology & Health Sciences	156	1	157
	Chemistry	40		40
	Math, Computer Sci and Stat	42	3	45
	Physics	1		1
<b><i>College of Science Total</i></b>		<b><i>320</i></b>	<b><i>4</i></b>	<b><i>324</i></b>
<b>University Total</b>		<b>1,333</b>	<b>50</b>	<b>1,383</b>

## Historical First-Time Freshmen Enrollment by College and Department

<b>College</b>	<b>Department Name</b>	<b>2007</b>	<b>2008</b>	<b>2009</b>	<b>2010</b>	<b>2011</b>
Business	Accounting, Fin, & Economics	46	42	28	38	48
	Mgmt, Marketing and Bus Admin	79	108	76	78	81
<b>College of Business Total</b>		<b>125</b>	<b>150</b>	<b>104</b>	<b>116</b>	<b>129</b>
Continuing Education	Continuing Education	3				
<b>Continuing Education Total</b>		<b>3</b>				
Education	Educ Leadership & Instr Tech^	1	3	2	2	
	Education Professions^					54
	Health & Human Performance	64	86	72	85	90
	Psychology	48	41	54	42	54
	Teacher Education^	54	62	67	65	
<b>College of Education Total</b>		<b>167</b>	<b>192</b>	<b>195</b>	<b>194</b>	<b>198</b>
Engineering & Engineering Technology	Engineering	100	92	100	121	131
	Engineering Technology	25	24	14	15	17
<b>College of Engineering &amp; Engineering Technology Total</b>		<b>125</b>	<b>116</b>	<b>114</b>	<b>136</b>	<b>148</b>
General & Basic Studies	Basic Studies	251	187	217	174	159
<b>General &amp; Basic Studies Total</b>		<b>251</b>	<b>187</b>	<b>217</b>	<b>174</b>	<b>159</b>
Liberal Arts	English & Foreign Languages	22	23	26	32	20
	History	13	11	17	21	14
	Mass Communication	17	35	21	21	19
	Performing Arts	22	38	35	40	29
	Social Sciences#	37	54	51	39	67
	Visual Arts	28	20	23	18	24
<b>College of Liberal Arts Total</b>		<b>139</b>	<b>181</b>	<b>173</b>	<b>171</b>	<b>173</b>
Nursing	Undergraduate Nursing	212	197	210	267	252
<b>College of Nursing Total</b>		<b>212</b>	<b>197</b>	<b>210</b>	<b>267</b>	<b>252</b>
Science	Agriculture*#	42	69	78	66	81
	Biological & Envr Sciences*	162	159			
	Biology & Health Sciences*			147	133	157
	Chemistry	28	39	34	25	40
	Math, Computer Science, & Stat	43	35	27	36	45
	Nutrition & Family Studies#	4	13	12	11	
	Physics		4	6	3	1
<b>College of Science Total</b>		<b>279</b>	<b>319</b>	<b>304</b>	<b>274</b>	<b>324</b>
<b>University Total</b>		<b>1,301</b>	<b>1,342</b>	<b>1,317</b>	<b>1,332</b>	<b>1,383</b>

\*In Spring 2009 Environmental Science was moved from Biological & Environmental Sciences to Agriculture.

^In Fall 2011 Educ Leadership & Instr Tech and Teacher Education were combined into Education Professions.

#In Fall 2011 Nutrition and Family Studies was split between Social Sciences and Agriculture.

### Fall 2011 First-Time Freshmen by Department and Major

<u>College/Department</u>	<u>Major</u>	<u>Full-Time</u>	<u>Part-Time</u>	<u>Total</u>
<b>Business</b>				
Accounting, Fin & Economics	Accounting	39	1	40
	Finance	8		8
<i>Department Total</i>		<i>47</i>	<i>1</i>	<i>48</i>
Mgmt, Marketing, & Bus Admin	Gen Business Administration	39	2	41
	Management	28		28
	Marketing	12		12
<i>Department Total</i>		<i>79</i>	<i>2</i>	<i>81</i>
<b>College of Business Total</b>		<b>126</b>	<b>3</b>	<b>129</b>
<b>Education</b>				
Education Professions	Early Childhood Education–Grades PK–3	28	1	29
	Elementary Education – Grades 1–5	19	2	21
	Secondary Educ and Teaching	4		4
<i>Department Total</i>		<i>51</i>	<i>3</i>	<i>54</i>
Health & Human Performance	Athletic Training	25		25
	Health & Human Performance, General	44	1	45
	Health & Physical Education, Grades K–12	20		20
<i>Department Total</i>		<i>89</i>	<i>1</i>	<i>90</i>
Psychology	Psychology	54		54
<i>Department Total</i>		<i>54</i>		<i>54</i>
<b>College of Education Total</b>		<b>194</b>	<b>4</b>	<b>198</b>
<b>Engineering &amp; Engineering Technology</b>				
Engineering	Engineering	130	1	131
<i>Department Total</i>		<i>130</i>	<i>1</i>	<i>131</i>
Engineering Technology	Engineering Technology	15	2	17
<i>Department Total</i>		<i>15</i>	<i>2</i>	<i>17</i>
<b>College of Engineering &amp; Engineering Technology Total</b>		<b>145</b>	<b>3</b>	<b>148</b>

## Fall 2011 First-Time Freshmen by Department and Major (continued)

<u>College/Department</u>	<u>Major</u>	<u>Full-Time</u>	<u>Part-Time</u>	<u>Total</u>
<b>General &amp; Basic Studies</b>				
Basic Studies	Basic Studies	124	24	148
	General Studies	10	1	11
<i>Department Total</i>		<i>134</i>	<i>25</i>	<i>159</i>
<b>General &amp; Basic Studies Total</b>		<b>134</b>	<b>25</b>	<b>159</b>
<b>Liberal Arts</b>				
English & Foreign Languages	English	17		17
	Foreign Languages	3		3
<i>Department Total</i>		<i>20</i>		<i>20</i>
History	History	14		14
<i>Department Total</i>		<i>14</i>		<i>14</i>
Mass Communication	Mass Communication	19		19
<i>Department Total</i>		<i>19</i>		<i>19</i>
Performing Arts	Liberal Studies	6		6
	Music	23		23
<i>Department Total</i>		<i>29</i>		<i>29</i>
Social Sciences	Criminal Justice	37	1	38
	Criminal Justice Online		1	1
	Family and Consumer Sciences	3	1	4
	General Studies	1		1
	Government	5		5
	Paralegal Studies	2	2	4
	Sociology	13	1	14
<i>Department Total</i>		<i>61</i>	<i>6</i>	<i>67</i>
Visual Arts	Art	24		24
<i>Department Total</i>		<i>24</i>		<i>24</i>
<b>College of Liberal Arts Total</b>		<b>167</b>	<b>6</b>	<b>173</b>
<b>Nursing</b>				
Undergraduate Nursing	Nursing	247	5	252
<i>Department Total</i>		<i>247</i>	<i>5</i>	<i>252</i>
<b>College of Nursing Total</b>		<b>247</b>	<b>5</b>	<b>252</b>

### Fall 2011 First-Time Freshmen by Department and Major (continued)

<u>College/Department</u>	<u>Major</u>	<u>Full-Time</u>	<u>Part-Time</u>	<u>Total</u>
<b>Science</b>				
Agriculture	Agricultural Sciences	62		62
	Family and Consumer Sciences	2		2
	Natural Resource Conservation Mgmt	13		13
	Nutrition and Food Sciences	3		3
	Secondary Educ and Teaching	1		1
<i>Department Total</i>		<i>81</i>		<i>81</i>
Biology & Health Sciences	Biological Science	101	1	102
	Clinical Laboratory Science	5		5
	Radiologic Sciences	50		50
<i>Department Total</i>		<i>156</i>	<i>1</i>	<i>157</i>
Chemistry	Chemistry	40		40
<i>Department Total</i>		<i>40</i>		<i>40</i>
Math, Computer Sci and Stat	Computer Information Tech	2		2
	Computer Science	22	2	24
	Mathematical Sciences	18	1	19
<i>Department Total</i>		<i>42</i>	<i>3</i>	<i>45</i>
Physics	Mathematical Sciences	1		1
<i>Department Total</i>		<i>1</i>		<i>1</i>
<i>College of Science Total</i>		<i>320</i>	<i>4</i>	<i>324</i>
<b>University Total</b>		<b>1,333</b>	<b>50</b>	<b>1,383</b>

## Transfers

### Fall 2011 Transfer Enrollment by Full-Time/Part-Time Status

	<u>Undergraduate</u>	<u>Graduate</u>	<u>Total</u>	<u>Percent</u>
Full-Time	302	11	313	81.9%
Part-Time	58	11	69	18.1%
<b>Total</b>	<b>360</b>	<b>22</b>	<b>382</b>	<b>100.0%</b>

### Fall 2011 Undergraduate Transfer Enrollment by College

	<u>Full-Time</u>	<u>Part-Time</u>	<u>Total</u>	<u>Percent</u>
Business	30	4	34	9.4%
Education	49	4	53	14.7%
Engineering & Engineering Technology	19	7	26	7.2%
General & Basic Studies	28	5	33	9.2%
Liberal Arts	63	14	77	21.4%
Nursing	56	18	74	20.6%
Science	57	6	63	17.5%
<b>Total</b>	<b>302</b>	<b>58</b>	<b>360</b>	<b>100.0%</b>

### Historical Fall Undergraduate Transfer Enrollment by College

	<u>2007</u>	<u>2008</u>	<u>2009</u>	<u>2010</u>	<u>2011</u>
Business	56	48	43	42	34
Education	42	56	65	54	53
Engineering & Engineering Technology	20	28	39	37	26
General & Basic Studies	23	39	52	31	33
Liberal Arts	36	40	73	55	77
Nursing	72	78	95	81	74
Science	74	61	55	65	63
<b>Total</b>	<b>323</b>	<b>350</b>	<b>422</b>	<b>365</b>	<b>360</b>

## Fall 2011 Undergraduate Transfers by College and Department

<u>College</u>	<u>Department</u>	<u>Full-Time</u>	<u>Part-Time</u>	<u>Total</u>
Business	Accounting, Fin & Economics	14	2	16
	Mgmt, Marketing, & Gen Bus	16	2	18
<b><i>College of Business Total</i></b>		<b>30</b>	<b>4</b>	<b>34</b>
Education	Education Professions	18	1	19
	Health & Human Performance	18	2	20
	Psychology	13	1	14
<b><i>College of Education Total</i></b>		<b>49</b>	<b>4</b>	<b>53</b>
Engineering & Engineering Technology	Engineering	16	6	22
	Engineering Technology	3	1	4
<b><i>College of Engineering &amp; Engineering Technology Total</i></b>		<b>19</b>	<b>7</b>	<b>26</b>
General & Basic Studies	Basic Studies	28	5	33
<b><i>General &amp; Basic Studies Total</i></b>		<b>28</b>	<b>5</b>	<b>33</b>
Liberal Arts	English & Foreign Languages	6	1	7
	History	5	3	8
	Mass Communication	11		11
	Performing Arts		1	1
	Social Sciences	39	8	47
	Visual Arts	2	1	3
<b><i>College of Liberal Arts Total</i></b>		<b>63</b>	<b>14</b>	<b>77</b>
Nursing	Undergraduate Nursing	56	18	74
<b><i>College of Nursing Total</i></b>		<b>56</b>	<b>18</b>	<b>74</b>
Science	Agriculture	12	2	14
	Biology & Health Sciences	37	4	41
	Chemistry	3		3
	Math, Computer Sci and Stat	5		5
<b><i>College of Science Total</i></b>		<b>57</b>	<b>6</b>	<b>63</b>
<b>University Total</b>		<b>302</b>	<b>58</b>	<b>360</b>



## Fall 2011 Undergraduate Transfers by Department and Major

<u>College/Department</u>	<u>Major</u>	<u>Full-Time</u>	<u>Part-Time</u>	<u>Total</u>
<b>Business</b>				
Accounting, Fin & Economics	Accounting	11	2	13
	Finance	3		3
<i>Department Total</i>		<i>14</i>	<i>2</i>	<i>16</i>
Mgmt, Marketing, & Bus Admin	Gen Business Administration	10	1	11
	Management	3	1	4
	Marketing	3		3
<i>Department Total</i>		<i>16</i>	<i>2</i>	<i>18</i>
<b>College of Business Total</b>		<b>30</b>	<b>4</b>	<b>34</b>
<b>Education</b>				
Education Professions	Early Childhood Education–Grades PK–3	8	1	9
	Elementary Education – Grades 1–5	10		10
<i>Department Total</i>		<i>18</i>	<i>1</i>	<i>19</i>
Health & Human Performance	Athletic Training	4	1	5
	Health & Human Performance, General	10	1	11
	Health & Physical Education, Grades K–12	4		4
<i>Department Total</i>		<i>18</i>	<i>2</i>	<i>20</i>
Psychology	Psychology	13	1	14
<i>Department Total</i>		<i>13</i>	<i>1</i>	<i>14</i>
<b>College of Education Total</b>		<b>49</b>	<b>4</b>	<b>53</b>
<b>Engineering &amp; Engineering Technology</b>				
Engineering	Engineering	16	6	22
<i>Department Total</i>		<i>16</i>	<i>6</i>	<i>22</i>
Engineering Technology	Engineering Technology	3	1	4
<i>Department Total</i>		<i>3</i>	<i>1</i>	<i>4</i>
<b>College of Engineering &amp; Engineering Technology Total</b>		<b>19</b>	<b>7</b>	<b>26</b>
<b>General &amp; Basic Studies</b>				
Basic Studies	Basic Studies	1		1
	General Studies	27	5	32
<i>Department Total</i>		<i>28</i>	<i>5</i>	<i>33</i>
<b>General &amp; Basic Studies Total</b>		<b>28</b>	<b>5</b>	<b>33</b>

**Fall 2011 Undergraduate Transfers by Department and Major (continued)**

<b><u>College/Department</u></b>	<b><u>Major</u></b>	<b><u>Full-Time</u></b>	<b><u>Part-Time</u></b>	<b><u>Total</u></b>
<b>Liberal Arts</b>				
English & Foreign Languages	English	4	1	5
	English Education – Grades 6-12	1		1
	General Studies	1		1
<i>Department Total</i>		<i>6</i>	<i>1</i>	<i>7</i>
History	History	4	3	7
	Liberal Studies	1		1
<i>Department Total</i>		<i>5</i>	<i>3</i>	<i>8</i>
Mass Communication	Mass Communication	11		11
<i>Department Total</i>		<i>11</i>		<i>11</i>
Performing Arts	Liberal Studies		1	1
<i>Department Total</i>			<i>1</i>	<i>1</i>
Social Sciences	Criminal Justice	10	3	13
	Criminal Justice Online	8	1	9
	Family and Consumer Sciences	3		3
	Government	4		4
	Paralegal Studies	2	2	4
	Sociology	12	2	14
<i>Department Total</i>		<i>39</i>	<i>8</i>	<i>47</i>
Visual Arts	Art	2	1	3
<i>Department Total</i>		<i>2</i>	<i>1</i>	<i>3</i>
<b>College of Liberal Arts Total</b>		<b>63</b>	<b>14</b>	<b>77</b>
<b>Nursing</b>				
Undergraduate Nursing	Nursing	56	18	74
<i>Department Total</i>		<i>56</i>	<i>18</i>	<i>74</i>
<b>College of Nursing Total</b>		<b>56</b>	<b>18</b>	<b>74</b>
<b>Science</b>				
Agriculture	Agricultural Sciences	8	2	10
	Family and Consumer Sciences	1		1
	Natural Resource Conservation Mgmt	3		3
<i>Department Total</i>		<i>12</i>	<i>2</i>	<i>14</i>

**Fall 2011 Undergraduate Transfers by Department and Major (continued)**

<b><u>College/Department</u></b>	<b><u>Major</u></b>	<b><u>Full-Time</u></b>	<b><u>Part-Time</u></b>	<b><u>Total</u></b>
Biology & Health Sciences	Biological Science	19	1	20
	Clinical Laboratory Science	6	1	7
	Radiologic Sciences	12	2	14
<i>Department Total</i>		<i>37</i>	<i>4</i>	<i>41</i>
Chemistry	Chemistry	2		2
	Secondary Educ and Teaching	1		1
<i>Department Total</i>		<i>3</i>		<i>3</i>
Math, Computer Sci and Stat	Computer Science	4		4
	Mathematical Sciences	1		1
<i>Department Total</i>		<i>5</i>		<i>5</i>
<i>College of Science Total</i>		<i>57</i>	<i>6</i>	<i>63</i>
<b>University Total</b>		<b>302</b>	<b>58</b>	<b>360</b>

This Page is Intentionally Left Blank

# Spring Enrollment Spring 2012

## Spring 2012 Enrollment by Level

	<u>Enrollment</u>	<u>Percent</u>
Undergraduate	7,209	88.6%
Graduate	927	11.4%
<b>Total</b>	<b>8,136</b>	<b>100.0%</b>

## Spring 2012 Full-Time Equivalent Enrollment by Level

	<u>SCH's</u>	<u>FTE</u>	<u>Percent</u>
Undergraduate	97,066	8,088.8 (12 hours)	91.7%
Graduate	6,591	732.3 (9 hours)	8.3%
<b>Total</b>	<b>103,657</b>	<b>8,821.1</b>	<b>100.0%</b>

## Spring 2012 Enrollment by Rank

	<u>Enrollment</u>	<u>Percent</u>
Early Admissions	596	7.33%
Freshman	1,808	22.22%
Sophomore	1,387	17.05%
Junior	1,239	15.23%
Senior	2,173	26.71%
Masters Candidate	734	9.02%
Education Specialist	2	0.02%
Special Graduate	189	2.32%
Non-Credit/Non-Degree	8	0.10%
<b>Total</b>	<b>8,136</b>	<b>100.00%</b>

### Spring 2012 Enrollment by Full-Time/Part-Time Status

	<u>Undergraduate</u>	<u>Graduate</u>	<u>Total</u>	<u>Percent</u>
Full-Time	5,684	353	6,037	74.2%
Part-Time	1,525	574	2,099	25.8%
<b>Total</b>	<b>7,209</b>	<b>927</b>	<b>8,136</b>	<b>100.0%</b>

### Spring 2012 Enrollment by Current Entry Status

	<u>Undergraduate</u>	<u>Graduate</u>	<u>Total</u>	<u>Percent</u>
Early Admissions	596		596	7.3%
Continuing	6,042	718	6,760	83.1%
First-Time Freshmen	86		86	1.1%
New Graduate		125	125	1.5%
Re-Entry	247	54	301	3.7%
Transfer	236	24	260	3.2%
Visiting	2	6	8	.01%
<b>Total</b>	<b>7,209</b>	<b>927</b>	<b>8,136</b>	<b>100.0%</b>

### Spring 2012 Enrollment by Gender

	<u>Undergraduate</u>	<u>Graduate</u>	<u>Total</u>	<u>Percent</u>
Female	4,410	619	5,029	61.8%
Male	2,799	308	3,107	38.2%
<b>Total</b>	<b>7,209</b>	<b>927</b>	<b>8,136</b>	<b>100.0%</b>

### Spring 2012 Enrollment by Ethnicity

	<u>Undergraduate</u>	<u>Graduate</u>	<u>Total</u>	<u>Percent</u>
Amer Indian/Alaska Native	55	4	59	0.72%
Asian	74	7	81	1.00%
Black	1,292	161	1,453	17.86%
Foreign	281	82	363	4.46%
Hawaiian or Pacific Isl	4		4	0.05%
Hispanic	125	14	139	1.71%
White	5,292	652	5,944	73.06%
Two or More Races	57	3	60	0.74%
Race/Ethnicity Unknown	29	4	33	0.40%
<b>Total</b>	<b>7,209</b>	<b>927</b>	<b>8,136</b>	<b>100.00%</b>

### Spring 2012 Enrollment by Gender and Ethnicity

	<b><u>Female</u></b>	<b><u>Male</u></b>	<b><u>Total</u></b>	<b><u>Percent</u></b>
Amer Indian/Alaska Native	36	23	59	0.72%
Asian	48	33	81	1.00%
Black	993	460	1,453	17.86%
Foreign	143	220	363	4.46%
Hawaiian or Pacific Isl	1	3	4	0.05%
Hispanic	86	53	139	1.71%
White	3,661	2,283	5,944	73.06%
Two or More Races	40	20	60	0.74%
Race/Ethnicity Unknown	21	12	33	0.40%
<b>Total</b>	<b>5,029</b>	<b>3,107</b>	<b>8,136</b>	<b>100.00%</b>

### Spring 2012 Undergraduate Enrollment by Gender and Ethnicity

	<b><u>Female</u></b>	<b><u>Male</u></b>	<b><u>Total</u></b>	<b><u>Percent</u></b>
Amer Indian/Alaska Native	34	21	55	0.8%
Asian	43	31	74	1.0%
Black	879	413	1,292	17.9%
Foreign	112	169	281	3.9%
Hawaiian or Pacific Isl	1	3	4	0.1%
Hispanic	74	51	125	1.7%
White	3,208	2,084	5,292	73.4%
Two or More Races	39	18	57	0.8%
Race/Ethnicity Unknown	20	9	29	0.4%
<b>Total</b>	<b>4,410</b>	<b>2,799</b>	<b>7,209</b>	<b>100.0%</b>

### Spring 2012 Graduate Enrollment by Gender and Ethnicity

	<b><u>Female</u></b>	<b><u>Male</u></b>	<b><u>Total</u></b>	<b><u>Percent</u></b>
Amer Indian/Alaska Native	2	2	4	0.4%
Asian	5	2	7	0.8%
Black	114	47	161	17.4%
Foreign	31	51	82	8.9%
Hispanic	12	2	14	1.5%
White	453	199	652	70.3%
Two or More Races	1	2	3	0.3%
Race/Ethnicity Unknown	1	3	4	0.4%
<b>Total</b>	<b>619</b>	<b>308</b>	<b>927</b>	<b>100.0%</b>

### Spring 2012 Undergraduate Enrollment by Rank and Ethnicity

	<b><u>EA</u></b>	<b><u>FR</u></b>	<b><u>SO</u></b>	<b><u>JR</u></b>	<b><u>SR</u></b>	<b><u>ND</u></b>	<b><u>Total</u></b>
Amer Indian/Alaska Native	3	20	9	4	19		55
Asian	8	14	18	9	25		74
Black	65	370	253	205	399		1,292
Foreign	2	53	63	43	119	1	281
Hawaiian or Pacific Isl		2			2		4
Hispanic	12	34	30	19	30		125
White	499	1,289	997	941	1,561	5	5,292
Two or More Races	6	16	11	13	11		57
Race/Ethnicity Unknown	1	10	6	5	7		29
<b><i>Total</i></b>	<b><i>596</i></b>	<b><i>1,808</i></b>	<b><i>1,387</i></b>	<b><i>1,239</i></b>	<b><i>2,173</i></b>	<b><i>6</i></b>	<b><i>7,209</i></b>

EA – Early Admissions  
FR- Freshman  
SO – Sophomore

JR – Junior  
SR – Senior  
ND – Non-Credit/Non-Degree

### Spring 2012 Graduate Enrollment by Rank and Ethnicity

	<b><u>MC</u></b>	<b><u>ES</u></b>	<b><u>SG</u></b>	<b><u>ND</u></b>	<b><u>Total</u></b>
Amer Indian/Alaska Native	3		1		4
Asian	4		3		7
Black	122	2	37		161
Foreign	79		3		82
Hispanic	12		2		14
White	508		142	2	652
Two or More Races	3				3
Race/Ethnicity Unknown	3		1		4
<b><i>Total</i></b>	<b><i>734</i></b>	<b><i>2</i></b>	<b><i>189</i></b>	<b><i>2</i></b>	<b><i>927</i></b>

MC – Masters Candidate  
ES – Education Specialist

SG – Special Graduate  
ND – Non-Credit/Non-Degree



### Spring 2012 Enrollment by Age

	<u>Undergraduate</u>	<u>Graduate</u>	<u>Total</u>	<u>Percent</u>
Under 18	394		394	4.8%
18 – 19	1,934		1,934	23.8%
20 – 21	1,841	5	1,846	22.7%
22 – 24	1,362	206	1,568	19.3%
25 – 29	757	306	1,063	13.0%
30 – 34	379	164	543	6.7%
35 – 39	216	85	301	3.7%
40 – 49	231	100	331	4.1%
50 – 64	93	52	145	1.8%
Over 64	2	9	11	0.1%
<b>Total</b>	<b>7,209</b>	<b>927</b>	<b>8,136</b>	<b>100.0%</b>

### Spring 2012 Enrollment by Age Group

	<u>Undergraduate</u>	<u>Graduate</u>	<u>Total</u>	<u>Percent</u>
Under 25	5,531	211	5,742	70.6%
25 and Older	1,678	716	2,394	29.4%
<b>Total</b>	<b>7,209</b>	<b>927</b>	<b>8,136</b>	<b>100.0%</b>

### Spring 2012 Average Age

	<u>Average Age</u>	<u>Median Age</u>
All Students	24.0	21
First-Time Freshmen	23.0	19
Undergraduate	23.1	21
Graduate	31.5	28

## Spring 2012 Enrollment by Parish of Origin

<u>Parish</u>	<u>Enrollment</u>		<u>Parish</u>	<u>Enrollment</u>
Acadia	232		St John	5
Allen	344		St Landry	158
Ascension	16		St Martin	38
Assumption	4		St Mary	31
Avoyelles	4		St Tammany	37
Beauregard	505		Tangipahoa	11
Bienville	1		Tensas	1
Bossier	15		Terrebonne	18
Caddo	26		Vermilion	107
Calcasieu	4,048		Vernon	124
Caldwell	1		Washington	7
Cameron	197		Webster	2
Catahoula	1		West Baton Rouge	8
Concordia	4		West Carroll	2
DeSoto	7		West Feliciana	10
East Baton Rouge	68		Winn	1
East Feliciana	3			
Evangeline	127		Total Louisiana	7,212
Franklin	3		% of Total Enrollment	88.6%
Grant	15		Number of Parishes	59
Iberia	60			
Iberville	8			
Jackson	3		Five Parish Total	5,637
Jefferson	24		% of Total Enrollment	69.3%
Jefferson Davis	543			
Lafayette	164			
Lafourche	9			
LaSalle	3			
Lincoln	1			
Livingston	11			
Madison	2			
Morehouse	3			
Natchitoches	16			
Orleans	38			
Ouachita	18			
Pointe Coupee	24			
Rapides	70			
Richland	1			
Sabine	10			
St Bernard	1			
St Charles	16			
St. Helena	1			
St James	5			

## Spring 2012 Enrollment by State of Origin

<u>State</u>	<u>Enrollment</u>
Alabama	5
Arizona	9
Arkansas	7
California	17
Colorado	5
Connecticut	1
Delaware	1
Florida	10
Georgia	8
Illinois	5
Indiana	2
Iowa	1
Kansas	4
Louisiana	7,212
Maryland	1
Massachusetts	2
Michigan	4
Minnesota	2
Mississippi	14
Missouri	2
Nebraska	2
Nevada	1
New Hampshire	1
New Jersey	1
New Mexico	2
New York	3
North Carolina	3
Ohio	8
Oklahoma	3
Oregon	4
Rhode Island	1
South Carolina	2
Tennessee	7
Texas	363
Utah	1
Vermont	1
Virginia	3
Washington	2
Wisconsin	2
Total	7,722
Total Out of State	510
% Out of State of Total Enrollment	6.3%
Number of States (Other than Louisiana)	38

## Spring 2012 Enrollment by Foreign Country of Origin

<u>Country</u>	<u>Enrollment</u>		<u>Country</u>	<u>Enrollment</u>
Bangladesh	2		Taiwan	5
Benin	1		Tajikistan	1
Bolivia	6		Thailand	8
Brazil	4		Tonga	1
Bulgaria	1		Turkey	9
Burundi	1		Ukraine	1
Cameroon	2		United Kingdom	3
Canada	8		Venezuela	1
Chile	2		Vietnam	65
China	50			
Colombia	15		Total Foreign	414
Costa Rica	1		% of Total Enrollment	5.1%
Cote d' Ivoire	1		Number of Countries (Other than USA)	51
Croatia	2			
Czech Republic	1			
Ecuador	6			
Ethiopia	1			
France	2			
Germany	2			
Ghana	1			
Greece	1			
Guatemala	1			
India	38			
Indonesia	10			
Ireland	3			
Jamaica	5			
Japan	1			
Jordan	1			
Kenya	5			
Korea, Republic of	12			
Mexico	6			
Nepal	89			
Nigeria	11			
Pakistan	1			
Peru	5			
Philippines	4			
Romania	5			
Russia	4			
Saudi Arabia	5			
Serbia	1			
Spain	1			
Sweden	2			

### Spring 2012 Undergraduate Enrollment by Residency

	<b><u>Full-Time</u></b>	<b><u>Part-Time</u></b>	<b><u>Total</u></b>	<b><u>Percent</u></b>
Louisiana	5,000	1,456	6,456	89.6%
Out of state	391	38	429	6.0%
Foreign	293	31	324	4.4%
<b><i>Total</i></b>	<b><i>5,684</i></b>	<b><i>1,525</i></b>	<b><i>7,209</i></b>	<b><i>100.0%</i></b>

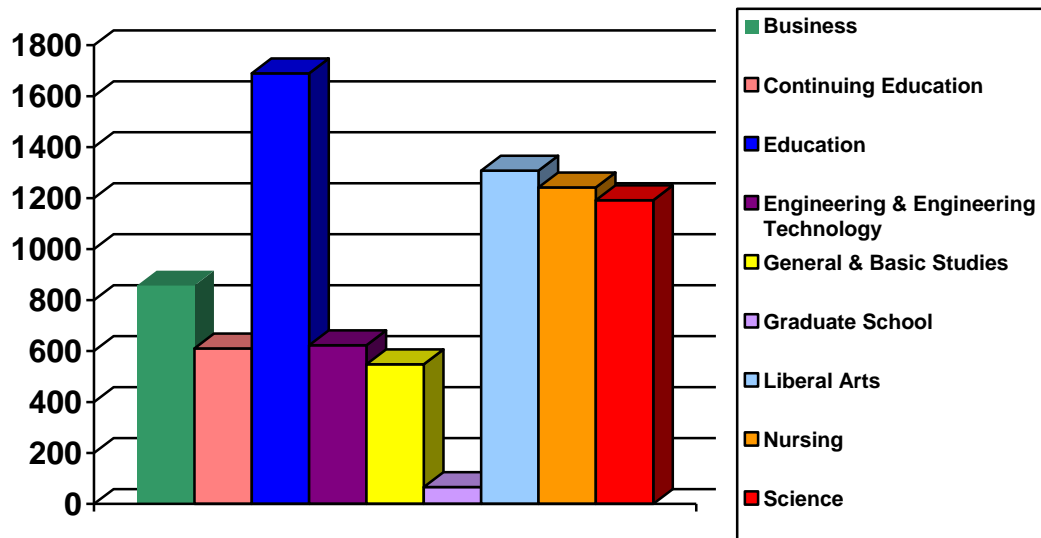
### Spring 2012 Graduate Enrollment by Residency

	<b><u>Full-Time</u></b>	<b><u>Part-Time</u></b>	<b><u>Total</u></b>	<b><u>Percent</u></b>
Louisiana	243	513	756	81.6%
Out of state	40	41	81	8.7%
Foreign	70	20	90	9.7%
<b><i>Total</i></b>	<b><i>353</i></b>	<b><i>574</i></b>	<b><i>927</i></b>	<b><i>100.0%</i></b>

This Page is Intentionally Left Blank

## Spring 2012 Enrollment by College

	<u>Undergraduate</u>	<u>Graduate</u>	<u>Total</u>	<u>Percent</u>
Business	792	65	857	10.5%
Continuing Education	600	10	610	7.5%
Education	1,168	522	1,690	20.8%
Engineering & Engineering Technology	589	34	623	7.7%
General & Basic Studies	548		548	6.7%
Graduate School		66	66	0.8%
Liberal Arts	1,275	33	1,308	16.1%
Nursing	1,124	118	1,242	15.3%
Science	1,113	79	1,192	14.6%
<b>Total</b>	<b>7,209</b>	<b>927</b>	<b>8,136</b>	<b>100.0%</b>



### Historical Spring Undergraduate Enrollment by College

	<u>2008</u>	<u>2009</u>	<u>2010</u>	<u>2011</u>	<u>2012</u>
Business	967	876	792	819	792
Continuing Education*	15	21	435	670	600
Education	1,094	1,089	1,175	1,188	1,168
Engineering & Engineering Technology	524	539	534	559	589
General & Basic Studies*	938	977	627	573	548
Liberal Arts	968	1,040	1,100	1,136	1,275
Nursing	1,081	1,034	1,169	1,180	1,124
Science	1,062	1,099	1,146	1,187	1,113
<b>Total</b>	<b>6,649</b>	<b>6,675</b>	<b>6,978</b>	<b>7,312</b>	<b>7,209</b>

\* In Fall 2009, Early Admissions was moved from General & Basic Studies to Continuing Education.

### Historical Spring Graduate Enrollment by College

	<u>2008</u>	<u>2009</u>	<u>2010</u>	<u>2011</u>	<u>2012</u>
Business	86	100	89	75	65
Continuing Education	14	15	16	13	10
Education	588	595	648	585	522
Engineering & Engineering Technology	69	57	63	50	34
Graduate School	61	61	87	64	66
Liberal Arts	32	39	32	35	33
Nursing	78	77	87	97	118
Science	104	77	99	82	79
<b>Total</b>	<b>1,032</b>	<b>1,021</b>	<b>1,121</b>	<b>1,001</b>	<b>927</b>



## Spring 2012 Enrollment by College and Department

<b><u>College</u></b>	<b><u>Department Name</u></b>	<b><u>Undergraduate</u></b>	<b><u>Graduate</u></b>	<b><u>Total</u></b>
Business	Accounting, Fin, & Economics	347		347
	Mgmt, Marketing and Gen Bus	445	65	510
<b><i>College of Business Total</i></b>		<b>792</b>	<b>65</b>	<b>857</b>
Continuing Education	Continuing Education	600	10	610
<b><i>Continuing Education Total</i></b>		<b>600</b>	<b>10</b>	<b>610</b>
Education	Education Professions	445		445
	Graduate Education Programs		292	292
	Health & Human Performance	447	39	486
	Psychology	276	76	352
	Student Teaching & Field Experience		115	115
<b><i>College of Education Total</i></b>		<b>1,168</b>	<b>522</b>	<b>1,690</b>
Engineering & Engineering Technology	Engineering	468	34	502
	Engineering Technology	121		121
<b><i>College of Engineering &amp; Engineering Technology Total</i></b>		<b>589</b>	<b>34</b>	<b>623</b>
General & Basic Studies	Basic Studies	548		548
<b><i>General &amp; Basic Studies Total</i></b>		<b>548</b>		<b>548</b>
Graduate School	Graduate School		66	66
<b><i>Graduate School Total</i></b>			<b>66</b>	<b>66</b>
Liberal Arts	English & Foreign Languages	158	33	191
	History	144		144
	Mass Communication	172		172
	Performing Arts	102		102
	Social Sciences	545		545
	Visual Arts	154		154
<b><i>College of Liberal Arts Total</i></b>		<b>1,275</b>	<b>33</b>	<b>1,308</b>
Nursing	Graduate Nursing		118	118
	Undergraduate Nursing	1,124		1,124
<b><i>College of Nursing Total</i></b>		<b>1,124</b>	<b>118</b>	<b>1,242</b>
Science	Agriculture	334	36	370
	Biology & Health Sciences	510		510
	Chemistry	89	19	108
	Math, Computer Science, & Stat	175	24	199
	Physics	5		5
<b><i>College of Science Total</i></b>		<b>1,113</b>	<b>79</b>	<b>1,192</b>
<b>University Total</b>		<b>7,209</b>	<b>927</b>	<b>8,136</b>

## Spring 2012 Undergraduate Enrollment by College and Department

<b><u>College</u></b>	<b><u>Department Name</u></b>	<b><u>Full-Time</u></b>	<b><u>Part-Time</u></b>	<b><u>Total</u></b>
Business	Accounting, Fin, & Economics	310	37	347
	Mgmt, Marketing and Bus Admin	376	69	445
<b><i>College of Business Total</i></b>		<b>686</b>	<b>106</b>	<b>792</b>
Continuing Education	Continuing Education	9	591	600
<b><i>Continuing Education Total</i></b>		<b>9</b>	<b>591</b>	<b>600</b>
Education	Education Professions	367	78	445
	Health & Human Performance	414	33	447
	Psychology	244	32	276
<b><i>College of Education Total</i></b>		<b>1,025</b>	<b>143</b>	<b>1,168</b>
Engineering & Engineering Technology	Engineering	410	58	468
	Engineering Technology	99	22	121
<b><i>College of Engineering &amp; Engineering Technology Total</i></b>		<b>509</b>	<b>80</b>	<b>589</b>
General & Basic Studies	Basic Studies	429	119	548
<b><i>General &amp; Basic Studies Total</i></b>		<b>429</b>	<b>119</b>	<b>548</b>
Liberal Arts	English & Foreign Languages	143	15	158
	History	121	23	144
	Mass Communication	159	13	172
	Performing Arts	95	7	102
	Social Sciences	473	72	545
	Visual Arts	137	17	154
<b><i>College of Liberal Arts Total</i></b>		<b>1,128</b>	<b>147</b>	<b>1,275</b>
Nursing	Undergraduate Nursing	889	235	1,124
<b><i>College of Nursing Total</i></b>		<b>889</b>	<b>235</b>	<b>1,124</b>
Science	Agriculture	309	25	334
	Biology & Health Sciences	466	44	510
	Chemistry	79	10	89
	Math, Computer Science, & Stat	152	23	175
	Physics	3	2	5
<b><i>College of Science Total</i></b>		<b>1,009</b>	<b>104</b>	<b>1,113</b>
<b>University Total</b>		<b>5,684</b>	<b>1,525</b>	<b>7,209</b>

## Spring 2012 Graduate Enrollment by College and Department

<b><u>College</u></b>	<b><u>Department Name</u></b>	<b><u>Full-Time</u></b>	<b><u>Part-Time</u></b>	<b><u>Total</u></b>
Business	Mgmt, Marketing and Bus Admin	40	25	65
<b><i>College of Business Total</i></b>		<b>40</b>	<b>25</b>	<b>65</b>
Continuing Education	Continuing Education		10	10
<b><i>Continuing Education Total</i></b>			<b>10</b>	<b>10</b>
Education	Graduate Education Programs	76	216	292
	Health & Human Performance	30	9	39
	Psychology	61	15	76
	Student Teaching & Field Experience	20	95	115
<b><i>College of Education Total</i></b>		<b>187</b>	<b>335</b>	<b>522</b>
Engineering & Engineering Technology	Engineering	17	17	34
<b><i>College of Engineering &amp; Engineering Technology Total</i></b>		<b>17</b>	<b>17</b>	<b>34</b>
Graduate School	Graduate School	10	56	66
<b><i>Graduate School Total</i></b>		<b>10</b>	<b>56</b>	<b>66</b>
Liberal Arts	English & Foreign Languages	28	5	33
<b><i>College of Liberal Arts Total</i></b>		<b>28</b>	<b>5</b>	<b>33</b>
Nursing	Graduate Nursing	19	99	118
<b><i>College of Nursing Total</i></b>		<b>19</b>	<b>99</b>	<b>118</b>
Science	Agriculture	18	18	36
	Chemistry	17	2	19
	Math, Computer Science, & Stat	17	7	24
<b><i>College of Science Total</i></b>		<b>52</b>	<b>27</b>	<b>79</b>
<b>University Total</b>		<b>353</b>	<b>574</b>	<b>927</b>

## Historical Spring Undergraduate Enrollment by College and Department

<b><u>College</u></b>	<b><u>Department Name</u></b>	<b><u>2008</u></b>	<b><u>2009</u></b>	<b><u>2010</u></b>	<b><u>2011</u></b>	<b><u>2012</u></b>
Business	Accounting, Fin, & Economics	340	352	340	348	347
	Mgmt, Marketing and Gen Bus	627	524	452	471	445
<b><i>College of Business Total</i></b>		<b>967</b>	<b>876</b>	<b>792</b>	<b>819</b>	<b>792</b>
Continuing Education	Continuing Education	15	21	435	670	600
<b><i>Continuing Education Total</i></b>		<b>15</b>	<b>21</b>	<b>435</b>	<b>670</b>	<b>600</b>
Education	Educ Leadership & Instr Tech	17	22	33	30	
	Education Professions					445
	Health & Human Performance	363	384	393	438	447
	Psychology	228	205	219	245	276
	Teacher Education	486	478	530	475	
<b><i>College of Education Total</i></b>		<b>1,094</b>	<b>1,089</b>	<b>1,175</b>	<b>1,188</b>	<b>1,168</b>
Engineering & Engineering Technology	Engineering	349	380	402	455	468
	Engineering Technology	175	159	132	104	121
<b><i>College of Engineering &amp; Engineering Technology Total</i></b>		<b>524</b>	<b>539</b>	<b>534</b>	<b>559</b>	<b>589</b>
General & Basic Studies	Basic Studies	938	977	627	573	548
<b><i>Gen &amp; Basic Studies Total</i></b>		<b>938</b>	<b>977</b>	<b>627</b>	<b>573</b>	<b>548</b>
Liberal Arts	English & Foreign Languages	129	139	146	152	158
	History	127	139	142	140	144
	Mass Communication	141	158	156	180	172
	Performing Arts	81	105	107	124	102
	Social Sciences	313	322	368	370	545
	Visual Arts	177	177	181	170	154
<b><i>College of Liberal Arts Total</i></b>		<b>968</b>	<b>1,040</b>	<b>1,100</b>	<b>1,136</b>	<b>1,275</b>
Nursing	Undergraduate Nursing	1,081	1,034	1,169	1,180	1,124
<b><i>College of Nursing Total</i></b>		<b>1,081</b>	<b>1,034</b>	<b>1,169</b>	<b>1,180</b>	<b>1,124</b>
Science	Agriculture*	192	252	283	301	334
	Biological & Envr Sciences*	548	485			
	Biology & Health Sciences*			470	496	510
	Chemistry	72	95	100	74	89
	Math, Computer Science, & Stat	142	162	169	174	175
	Nutrition and Family Studies	100	94	109	129	
	Physics	8	11	15	13	5
<b><i>College of Science Total</i></b>		<b>1,062</b>	<b>1,099</b>	<b>1,146</b>	<b>1,187</b>	<b>1,113</b>
<b>University Total</b>		<b>6,649</b>	<b>6,675</b>	<b>6,978</b>	<b>7,312</b>	<b>7,209</b>

\*In Fall 2009 Environmental Science enrollment was moved from Biological & Environmental Sciences to Agriculture.

## Historical Spring Graduate Enrollment by College and Department

<b><u>College</u></b>	<b><u>Department Name</u></b>	<b><u>2008</u></b>	<b><u>2009</u></b>	<b><u>2010</u></b>	<b><u>2011</u></b>	<b><u>2012</u></b>
Business	Mgmt, Marketing and Gen Bus	86	100	89	75	65
<b><i>College of Business Total</i></b>		<b>86</b>	<b>100</b>	<b>89</b>	<b>75</b>	<b>65</b>
Continuing Education	Continuing Education	14	15	16	13	10
<b><i>Continuing Education Total</i></b>		<b>14</b>	<b>15</b>	<b>16</b>	<b>13</b>	<b>10</b>
Education	Educ Leadership & Instr Tech	126	122	135	98	
	Graduate Education Programs					292
	Health & Human Performance	22	41	32	37	39
	Psychology	63	64	59	76	76
	Teacher Education	377	368	422	374	
	Student Teaching & Field Experience					115
<b><i>College of Education Total</i></b>		<b>588</b>	<b>595</b>	<b>648</b>	<b>585</b>	<b>522</b>
Engineering & Engineering Tech	Engineering	69	57	63	50	34
<b><i>College of Engineering &amp; Engineering Technology Total</i></b>		<b>69</b>	<b>57</b>	<b>63</b>	<b>50</b>	<b>34</b>
Graduate School	Graduate School	61	61	87	64	66
<b><i>Graduate School Total</i></b>		<b>61</b>	<b>61</b>	<b>87</b>	<b>64</b>	<b>66</b>
Liberal Arts	English & Foreign Languages	30	35	30	35	33
	Performing Arts	2	4	2		
<b><i>College of Liberal Arts Total</i></b>		<b>32</b>	<b>39</b>	<b>32</b>	<b>35</b>	<b>33</b>
Nursing	Graduate Nursing	78	77	87	97	118
<b><i>College of Nursing Total</i></b>		<b>78</b>	<b>77</b>	<b>87</b>	<b>97</b>	<b>118</b>
Science	Agriculture*	11	25	33	31	36
	Biological & Envr Sciences*	10				
	Chemistry	16	15	20	21	19
	Math, Computer Science, & Stat	59	37	46	30	24
	Nutrition and Family Studies	8				
<b><i>College of Science Total</i></b>		<b>104</b>	<b>77</b>	<b>99</b>	<b>82</b>	<b>79</b>
<b>University Total</b>		<b>1,032</b>	<b>1,021</b>	<b>1,121</b>	<b>1,001</b>	<b>927</b>

\*In Fall 2009 Environmental Science enrollment was moved from Biological & Environmental Sciences to Agriculture.

## Spring 2012 Enrollment by Department and Major

<u>College/Department</u>	<u>Major</u>	<u>Undergraduate</u>	<u>Graduate</u>	<u>Total</u>
<b>Business</b>				
Accounting, Fin & Economics	Accounting	250		250
	Finance	97		97
<i>Department Total</i>		<i>347</i>		<i>347</i>
Mgmt, Marketing, & Gen Bus	Business Administration		65	65
	Gen Business Administration	178		178
	Management	164		164
	Management Online	2		2
	Marketing	100		100
	Undeclared	1		1
<i>Department Total</i>		<i>445</i>	<i>65</i>	<i>510</i>
<i>College of Business Total</i>		<i>792</i>	<i>65</i>	<i>857</i>
<b>Continuing Education</b>				
Continuing Education	EASE Program	4	10	14
	Undeclared	596		596
<i>Department Total</i>		<i>600</i>	<i>10</i>	<i>610</i>
<i>Continuing Education Total</i>		<i>600</i>	<i>10</i>	<i>610</i>
<b>Education</b>				
Education Professions	Business Education – Grades 6-12	15		15
	Early Childhood Education	1		1
	Early Childhood Educ – Grades PK- 3	211		211
	Elementary Education – Grades 1–5	209		209
	Secondary Educ and Teaching	6		6
	Special Education, General	3		3
<i>Department Total</i>		<i>445</i>		<i>445</i>
Graduate Education Programs	Curriculum and Instruction		16	16
	Educ Technology Leadership		17	17
	Educational Leadership		71	71
	Educational Technology		1	1
	Elementary Educ Grades 1-5		52	52
	Instructional Technology		31	31
	School Counseling		41	41
	Secondary Educ Grades 6-12		54	54
	Special Educ Mild-Mod Gr 1-12		4	4
	Special Education		5	5
<i>Department Total</i>			<i>292</i>	<i>292</i>

### Spring 2012 Enrollment by Department and Major (continued)

<b><u>College/Department</u></b>	<b><u>Major</u></b>	<b><u>Undergraduate</u></b>	<b><u>Graduate</u></b>	<b><u>Total</u></b>
Health & Human Performance	Athletic Training	78		78
	Health & Human Performance		39	39
	Health & Human Performance, Education	1		1
	Health & Human Performance, General	238		238
	Health & Physical Education, Gr K-12	130		130
<i>Department Total</i>		<i>447</i>	<i>39</i>	<i>486</i>
Psychology	Psychology	276	76	352
<i>Department Total</i>		<i>276</i>	<i>76</i>	<i>352</i>
Student Teaching & Field Experience	Add-on Certification		13	13
	Alt Cert-Gr 1-12 Mild Mod Sp Ed		5	5
	Alt Cert-Grades K-12 Art Ed		4	4
	Alt Cert-Grades K-12 HP Ed		5	5
	Alt Cert-Grades PK-3		14	14
	Alt Certification-Grades 1-5		35	35
	Alt Certification-Grades 6-12		32	32
	School Librarian (Add on Cert)		7	7
<i>Department Total</i>			<i>115</i>	<i>115</i>
<b><i>College of Education Total</i></b>		<b><i>1,168</i></b>	<b><i>522</i></b>	<b><i>1,690</i></b>
<b>Engineering &amp; Engineering Technology</b>				
Engineering	Engineering	468	34	502
<i>Department Total</i>		<i>468</i>	<i>34</i>	<i>502</i>
Engineering Technology	Engineering Technology	121		121
<i>Department Total</i>		<i>121</i>		<i>121</i>
<b><i>College of Engineering &amp; Engineering Technology Total</i></b>		<b><i>589</i></b>	<b><i>34</i></b>	<b><i>623</i></b>
<b>General &amp; Basic Studies</b>				
Basic Studies	Basic Studies	78		78
	General Studies	469		469
	Undeclared	1		1
<i>Department Total</i>		<i>548</i>		<i>548</i>
<b><i>General &amp; Basic Studies Total</i></b>		<b><i>548</i></b>		<b><i>548</i></b>

## Spring 2012 Enrollment by Department and Major (continued)

<u>College/Department</u>	<u>Major</u>	<u>Undergraduate</u>	<u>Graduate</u>	<u>Total</u>
<b>Graduate School</b>				
Graduate School	Non-degree		66	66
<i>Department Total</i>			66	66
<b>Graduate School Total</b>			66	66
<b>Liberal Arts</b>				
English & Foreign Languages	Creative Writing		17	17
	English	95	16	111
	English Education Grades 6 – 12	41		41
	Foreign Language Education Gr 6-12	2		2
	Foreign Languages	17		17
	French	2		2
	Spanish	1		1
<i>Department Total</i>		158	33	191
History	History	92		92
	Liberal Studies	35		35
	Social Studies Education Gr 6 – 12	17		17
<i>Department Total</i>		144		144
Mass Communication	Communication Studies	5		5
	Mass Communication	167		167
<i>Department Total</i>		172		172
Performing Arts	Liberal Studies	10		10
	Music	25		25
	Music Education	1		1
	Music Educ–Instrumental, Gr K–12	32		32
	Music Education – Vocal, Gr K–12	14		14
	Music Performance	9		9
	Theatre Arts	11		11
<i>Department Total</i>		102		102
Social Sciences	Criminal Justice	201		201
	Criminal Justice Online	83		83
	Family and Consumer Sciences	51		51
	General Studies	9		9
	Government	32		32
	Paralegal Studies	34		34
	Sociology	126		126
	Sociology Online	9		9
<i>Department Total</i>		545		545



### Spring 2012 Enrollment by Department and Major (continued)

<u>College/Department</u>	<u>Major</u>	<u>Undergraduate</u>	<u>Graduate</u>	<u>Total</u>
Visual Arts	Art	135		135
	Art Education	2		2
	Art Education – Grades K – 12	17		17
<i>Department Total</i>		<i>154</i>		<i>154</i>
<i>College of Liberal Arts Total</i>		<i>1,275</i>	<i>33</i>	<i>1,308</i>
<b>Nursing</b>				
Graduate Nursing	Nursing		118	118
<i>Department Total</i>			<i>118</i>	<i>118</i>
Undergraduate Nursing	Nursing	1,101		1,101
	Nursing Online	23		23
<i>Department Total</i>		<i>1,124</i>		<i>1,124</i>
<i>College of Nursing Total</i>		<i>1,124</i>	<i>118</i>	<i>1,242</i>
<b>Science</b>				
Agriculture	Agricultural Education – Grs 6 – 12	9		9
	Agricultural Sciences	222		222
	Environmental & Chemical Sciences		36	36
	Environmental Science	2		2
	Family and Consumer Sciences	21		21
	Natural Resource Conserv Mgmt	53		53
	Nutrition and Food Sciences	21		21
	Secondary Educ and Teaching	1		1
	Wildlife Management	5		5
<i>Department Total</i>		<i>334</i>	<i>36</i>	<i>370</i>
Biology & Health Sciences	Biological Science	246		246
	Biology Education – Grades 6 – 12	9		9
	Clinical Laboratory Science	68		68
	Radiologic Sciences	187		187
<i>Department Total</i>		<i>510</i>		<i>510</i>
Chemistry	Chemistry	88		88
	Environmental & Chemical Sciences		19	19
	Secondary Educ and Teaching	1		1
<i>Department Total</i>		<i>89</i>	<i>19</i>	<i>108</i>

### Spring 2012 Enrollment by Department and Major (continued)

<u>College/Department</u>	<u>Major</u>	<u>Undergraduate</u>	<u>Graduate</u>	<u>Total</u>
Math, Computer Sci and Stat	Computer Information Tech	17		17
	Computer Science	92		92
	Mathematical Sciences	42	24	66
	Mathematics	11		11
	Mathematics Education – Grades 6-12	13		13
<i>Department Total</i>		<i>175</i>	<i>24</i>	<i>199</i>
Physics	Mathematical Sciences	1		1
	Physics	4		4
<i>Department Total</i>		<i>5</i>		<i>5</i>
<i>College of Science Total</i>		<i>1,113</i>	<i>79</i>	<i>1,192</i>
<b>University Total</b>		<b>7,209</b>	<b>927</b>	<b>8,136</b>

### Historical Spring Enrollment Data Since 1940

<u>Spring</u>	<u>Under-graduate</u>	<u>Graduate</u>	<u>Total</u>		<u>Spring</u>	<u>Under-graduate</u>	<u>Graduate</u>	<u>Total</u>
<b>2012</b>	7,209	927	8,136		<b>1975</b>	4,585	942	5,527
<b>2011</b>	7,312	1,001	8,313		<b>1974</b>	4,544	932	5,476
<b>2010</b>	6,978	1,121	8,099		<b>1973</b>	4,659	1,015	5,674
<b>2009</b>	6,675	1,021	7,696		<b>1972</b>	4,659	943	5,602
<b>2008</b>	6,649	1,032	7,681		<b>1971</b>	4,332	830	5,162
<b>2007</b>	6,718	971	7,689		<b>1970</b>	4,016	616	4,632
<b>2006</b>	6,915	993	7,908		<b>1969</b>	4,045	488	4,533
<b>2005</b>	7,178	981	8,159		<b>1968</b>	3,990	376	4,366
<b>2004</b>	6,877	1,003	7,880		<b>1967</b>	3,555	362	3,917
<b>2003</b>	6,587	1,008	7,595		<b>1966</b>	3,009	300	3,309
<b>2002</b>	6,332	995	7,327		<b>1965</b>	2,866	240	3,106
<b>2001</b>	6,171	990	7,161		<b>1964</b>	2,416	172	2,588
<b>2000</b>	6,319	1,115	7,434		<b>1963</b>	2,468	139	2,607
<b>1999</b>	6,315	1,068	7,383		<b>1962</b>	2,617	87	2,704
<b>1998</b>	6,172	1,111	7,283		<b>1961</b>	2,506		2,506
<b>1997</b>	6,313	1,117	7,430		<b>1960</b>	2,369		2,369
<b>1996</b>	6,689	1,106	7,795		<b>1959</b>	2,163		2,163
<b>1995</b>	6,993	1,142	8,135		<b>1958</b>	1,943		1,943
<b>1994</b>	7,023	1,058	8,081		<b>1957</b>	1,638		1,638
<b>1993</b>	6,618	1,134	7,752		<b>1956</b>	1,648		1,648
<b>1992</b>	6,387	1,071	7,458		<b>1955</b>	1,380		1,380
<b>1991</b>	6,015	1,036	7,051		<b>1954</b>	998		998
<b>1990</b>	6,080	1,089	7,169		<b>1953</b>	928		928
<b>1989</b>	5,884	1,066	6,950		<b>1952</b>	933		933
<b>1988</b>	5,901	1,022	6,923		<b>1951</b>	601		601
<b>1987</b>	6,096	1,057	7,153		<b>1950</b>	336		336
<b>1986</b>	6,031	1,195	7,226		<b>1949</b>	501		501
<b>1985</b>	6,146	1,487	7633		<b>1948</b>	529		529
<b>1984</b>	6,049	1,343	7,392		<b>1947</b>	560		560
<b>1983</b>	5,704	1,399	7,103		<b>1946</b>	268		268
<b>1982</b>	5,206	1,521	6,727		<b>1945</b>	116		116
<b>1981</b>	4,837	723	5,560		<b>1944</b>	107		107
<b>1980</b>	4,203	709	4,912		<b>1943</b>	173		173
<b>1979</b>	4,198	650	4,848		<b>1942</b>	181		181
<b>1978</b>	4,396	721	5,117		<b>1941</b>	215		215
<b>1977</b>	4,720	688	5,408		<b>1940</b>	na		na
<b>1976</b>	4,817	903	5,720					

## **Retention and Graduation Rates**

### **First-Time Full-Time Bachelor's Degree Seeking Freshman First to Second Year Retention Rate**

	<b><u>% Retained</u></b>
Fall 2010 to Fall 2011	67.7%
Fall 2009 to Fall 2010	69.6%
Fall 2008 to Fall 2009	67.2%
Fall 2007 to Fall 2008	68.4%
Fall 2006 to Fall 2007	65.5%

## **IPEDS Graduation Rates**

	<b><u>2004 Cohort</u></b>
4 Years	13%
5 Years	30%
6 Years	35%

### **Time to Degree First-Time Full-Time Bachelor's Degree Seeking Freshman**

2010-2011 Completer	5.7 years
2009-2010 Completers	5.6 years
2008-2009 Completers	5.7 years

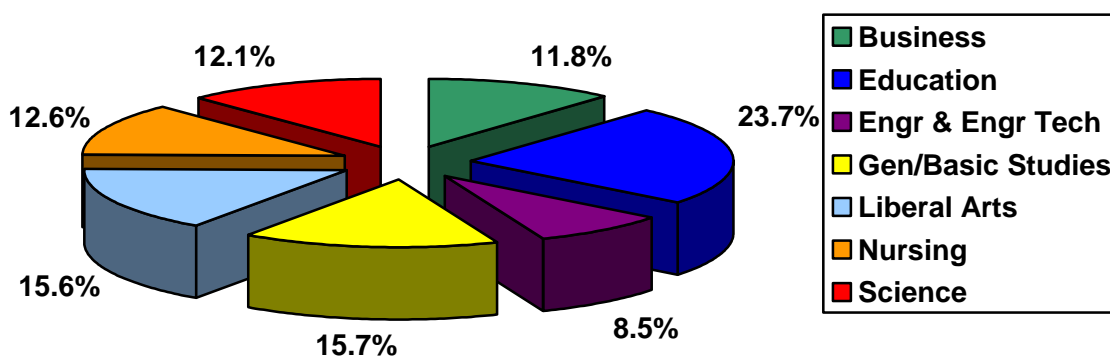
\*Source Board of Regents TTDRPTBOR

**Degrees Conferred**  
**July 1, 2010 – June 30, 2011**

**Degrees Conferred by College and Level**

	<u><b>Associate</b></u>	<u><b>Bachelor's</b></u>	<u><b>Master's</b></u>	<u><b>Education Specialist</b></u>	<u><b>Post Bach Certification</b></u>	<u><b>Total</b></u>
Business		145	34			179
Education		146	178	9	27	360
Engineering & Engineering Technology	22	78	29			129
General & Basic Studies	78	160				238
Liberal Arts	22	195	20			237
Nursing	40	130	22			192
Science	10	129	44			183
<b>Total</b>	<b>172</b>	<b>983</b>	<b>327</b>	<b>9</b>	<b>27</b>	<b>1,518</b>

**Degrees Conferred by College**



### Historical Degrees Conferred by College

	<b><u>06-07</u></b>	<b><u>07-08</u></b>	<b><u>08-09</u></b>	<b><u>09-10</u></b>	<b><u>10-11</u></b>
Business	230	197	216	196	179
Education	295	263	302	271	360
Engineering & Engineering Technology	125	163	122	114	129
General & Basic Studies	250	264	218	205	238
Liberal Arts	221	223	194	228	237
Nursing	163	179	227	208	192
Science	169	177	189	183	183
<b><i>Total</i></b>	<b><i>1,453</i></b>	<b><i>1,466</i></b>	<b><i>1,468</i></b>	<b><i>1,405</i></b>	<b><i>1,518</i></b>

### Historical Degrees Conferred by Level

	<b><u>06-07</u></b>	<b><u>07-08</u></b>	<b><u>08-09</u></b>	<b><u>09-10</u></b>	<b><u>10-11</u></b>
Associate	138	148	122	152	172
Bachelor	1,043	1,055	1,049	975	983
Master	268	262	297	275	327
Education Specialist	4	1		3	9
Post Bach Certification					27
<b><i>Total</i></b>	<b><i>1,453</i></b>	<b><i>1,466</i></b>	<b><i>1,468</i></b>	<b><i>1,405</i></b>	<b><i>1,518</i></b>

### 2010-2011 Degrees Conferred by Gender and Ethnicity

	<u>Female</u>	<u>Male</u>	<u>Total</u>
Amer Indian/Alaska Native	4	2	6
Asian	14	5	19
Black	161	72	233
Foreign	36	79	115
Hispanic	17	7	24
White	738	370	1,108
Two or More Races	6	1	7
Race/Ethnicity Unknown	1	5	6
<b>Total</b>	<b>977</b>	<b>541</b>	<b>1,518</b>

### 2010-2011 Degrees Conferred by Gender and Level

	<u>Associate</u>	<u>Bachelor's</u>	<u>Master's</u>	<u>Education Specialist</u>	<u>Post Bach Certification</u>	<u>Total</u>
Female	106	631	207	7	26	977
Male	66	352	120	2	1	541
<b>Total</b>	<b>172</b>	<b>983</b>	<b>327</b>	<b>9</b>	<b>27</b>	<b>1,518</b>

### Historical Degrees Conferred by Gender

	<u>06-07</u>	<u>07-08</u>	<u>08-09</u>	<u>09-10</u>	<u>10-11</u>
Female	909	912	904	905	977
Male	544	554	564	500	541
<b>Total</b>	<b>1,453</b>	<b>1,466</b>	<b>1,468</b>	<b>1,405</b>	<b>1,518</b>

### 2010-2011 Degrees Conferred by Ethnicity and Level

	<u>Associate</u>	<u>Bachelor's</u>	<u>Master's</u>	<u>Education Specialist</u>	<u>Post Bach Certification</u>	<u>Total</u>
Amer Indian/Alaska Native	2	4				6
Asian	1	13	5			19
Black	42	152	34	2	3	233
Foreign	3	42	70			115
Hispanic	1	19	4			24
White	123	742	212	7	24	1,108
Two or More Races		7				7
Race/Ethnicity Unknown		4	2			6
<b>Total</b>	<b>172</b>	<b>983</b>	<b>327</b>	<b>9</b>	<b>27</b>	<b>1,518</b>

### Historical Degrees Conferred by Ethnicity

	<u>06-07</u>	<u>07-08</u>	<u>08-09</u>	<u>09-10</u>	<u>10-11</u>
Amer Indian/Alaska Native	8	8	6	8	6
Asian					19
Asian/Pacific Islander	14	13	12	18	
Black	235	234	223	190	233
Foreign	96	121	127	100	115
Hispanic	12	18	17	21	24
White	1,083	1,066	1,075	1,063	1,108
Two or More Races					7
Race/Ethnicity Unknown	5	6	8	5	6
<b>Total</b>	<b>1,453</b>	<b>1,466</b>	<b>1,468</b>	<b>1,405</b>	<b>1,518</b>



### **Top 10 Bachelor's Degrees Conferred 2010–2011**

	<b><u>Number of Degrees</u></b>
BGS General Studies	160
BSN Nursing	122
BS Accounting	57
BS Engineering	57
BS Elementary Education Gr 1-5	34
BS Psychology	34
BA Art	33
BS Criminal Justice	30
BS Mass Communication	29
BS Early Childhood Educ-Grds PK-3	28

### **Top 5 Associate Degrees Conferred 2010–2011**

	<b><u>Number of Degrees</u></b>
AGS General Studies	91
ADN Nursing	40
AS Engineering Technology	22
AS Computer Information Technology	10
AA Paralegal Studies	9

### **Top 5 Master's Degrees Conferred 2010–2011**

	<b><u>Number of Degrees</u></b>
MEd Educational Leadership	44
MBA Business Administration	34
MAT Secondary Educ Grades 6-12	29
MEng Engineering	29
MS Mathematical Sciences	27

### Future Plans of Fall 2010 / Spring 2011 Graduates\*

<b><u>All Degree Levels</u></b>	<b><u>Fall 2010</u></b>	<b><u>Spring 2011</u></b>	<b><u>2010-11</u></b>
Employment, FT paid	320	291	611
Employment, PT paid	6	8	14
Grad/Prof school FT	25	36	61
Grad/Prof school PT	25	33	58
Additional UG coursework	5	3	8
Volunteer activity (Peace Corp)	1	1	2
Military	2	2	4
Starting or raising a family	9	4	13
Other	7	13	20
Total	400	391	791
<b><u>Bachelor Degree Level Only</u></b>	<b><u>Fall 2010</u></b>	<b><u>Spring 2011</u></b>	<b><u>2010-11</u></b>
Employment, FT paid	185	210	395
Employment, PT paid	3	6	9
Grad/Prof school FT	23	33	56
Grad/Prof school PT	22	26	48
Additional UG coursework	2	2	4
Volunteer activity (Peace Corp)	1	1	2
Military	1	1	2
Starting or raising a family	7	2	9
Other	3	11	14
Total	247	292	539

\*Survey administered each semester at GRAD Fest

62% of Completers responded to College portrait question: What is most likely to be your principal activity upon graduation?

## Student Credit Hours (SCH) Fall 2011 SCH's by Department and Level

Student rank classification is used to determine SCH level according to BOR definition.

	<u>Lower UG</u>	<u>Upper UG</u>	<u>Graduate</u>	<u>Total</u>
Accounting, Fin & Econ	948	2,847	261	4,056
Mgmt, Marketing and Gen Bus	1,185	2,607	360	4,152
<b><i>College of Business Total</i></b>	<b><i>2,133</i></b>	<b><i>5,454</i></b>	<b><i>621</i></b>	<b><i>8,208</i></b>
Education Professions	1,680	3,136	1,957	6,773
Health & Human Performance	2,141	2,297	362	4,800
Psychology	3,804	2,265	751	6,820
Stdnt Tchng & Prof Educ Srvc	0	468	195	663
<b><i>College of Education Total</i></b>	<b><i>7,625</i></b>	<b><i>8,166</i></b>	<b><i>3,265</i></b>	<b><i>19,056</i></b>
Engineering	883	2,357	238	3,478
Engineering Technology	317	597	0	914
<b><i>College of Engineering and Engineering Technology Total</i></b>	<b><i>1,200</i></b>	<b><i>2,954</i></b>	<b><i>238</i></b>	<b><i>4,392</i></b>
English & Foreign Languages	7,640*	2,760	345	10,745
History	4,440	1,530	6	5,976
Mass Communications	2,563	1,536	3	4,102
Performing Arts	1,688	1,496	3	3,187
Social Sciences	4,353	4,690	33	9,076
Visual Arts	1,361	1,663	0	3,024
<b><i>College of Liberal Arts Total</i></b>	<b><i>22,045</i></b>	<b><i>13,675</i></b>	<b><i>390</i></b>	<b><i>36,110</i></b>
Graduate Nursing	0	0	651	651
Undergraduate Nursing	294	5,547	0	5,841
<b><i>College of Nursing Total</i></b>	<b><i>294</i></b>	<b><i>5,547</i></b>	<b><i>651</i></b>	<b><i>6,492</i></b>
Agriculture	2,336	2,456	388	5,180
Biology & Health Sciences	6,303	3,295	30	9,628
Chemistry	2,477	1,565	232	4,274
Math, Comp Sci, & Stat	10,913**	3,541	255	14,709
Physics	889	733	4	1,626
<b><i>College of Science Total</i></b>	<b><i>22,918</i></b>	<b><i>11,590</i></b>	<b><i>909</i></b>	<b><i>35,417</i></b>

\* Includes 608 developmental

\*\* Includes 1,616 developmental

### Fall 2011 SCH's by Department and Level (continued)

	<u>Lower UG</u>	<u>Upper UG</u>	<u>Graduate</u>	<u>Total</u>
General and Basic Studies	0	75	0	75
<i>Division of General and Basic Studies Total</i>	<i>0</i>	<i>75</i>	<i>0</i>	<i>75</i>
Freshmen Foundations	1,457	17	0	1,474
<i>Freshman Foundations Total</i>	<i>1,457</i>	<i>17</i>	<i>0</i>	<i>1,474</i>
<i>University Total</i>	<i>57,672</i>	<i>47,478</i>	<i>6,074</i>	<i>111,224</i>

## Historical Fall SCH's by Department

	<u><b>2007</b></u>	<u><b>2008</b></u>	<u><b>2009</b></u>	<u><b>2010</b></u>	<u><b>2011</b></u>
Accounting, Fin & Econ	3,852	3,891	4,023	4,266	4,056
Mgmt, Marketing and Gen Bus	5,433	5,574	4,683	4,308	4,152
<b><i>College of Business Total</i></b>	<b><i>9,285</i></b>	<b><i>9,465</i></b>	<b><i>8,706</i></b>	<b><i>8,574</i></b>	<b><i>8,208</i></b>
Education Professions					6,773
Educ Leadership & Instr Tech	2,046	2,046	2,387	2,238	
Health & Human Performance	5,380	4,882	5,551	5,186	4,800
Psychology	5,846	6,024	6,191	7,084	6,820
Teacher Education	3,592	3,605	4,497	4,563	
Student Tchng & Prof Educ Srvc	636	477	555	720	663
<b><i>College of Education Total</i></b>	<b><i>17,500</i></b>	<b><i>17,034</i></b>	<b><i>19,181</i></b>	<b><i>19,791</i></b>	<b><i>19,056</i></b>
Engineering	3,129	2,877	2,970	3,123	3,478
Engineering Technology	1,129	1,157	917	923	914
<b><i>College of Engineering and Engineering Technology Total</i></b>	<b><i>4,258</i></b>	<b><i>4,034</i></b>	<b><i>3,887</i></b>	<b><i>4,046</i></b>	<b><i>4,392</i></b>
English & Foreign Languages	9,890	10,207	10,171	10,526	10,745
History	4,575	5,697	6,069	6,156	5,976
Mass Communications	3,923	4,106	4,266	4,270	4,102
Performing Arts	3,395	3,245	3,207	3,489	3,187
Social Sciences	8,106	7,922	8,756	8,716	9,076
Visual Arts	2,476	2,682	2,640	2,916	3,024
<b><i>College of Liberal Arts Total</i></b>	<b><i>32,365</i></b>	<b><i>33,859</i></b>	<b><i>35,109</i></b>	<b><i>36,073</i></b>	<b><i>36,110</i></b>
Graduate Nursing	578	607	583	516	651
Undergraduate Nursing	5,933	6,504	5,863	5,745	5,841
<b><i>College of Nursing Total</i></b>	<b><i>6,511</i></b>	<b><i>7,111</i></b>	<b><i>6,446</i></b>	<b><i>6,261</i></b>	<b><i>6,492</i></b>
Agriculture*	1,992	2,090	3,525	3,906	5,180
Biological & Envr Sciences*	9,845	9,529			
Biology & Health Sciences*			8,704	9,278	9,628
Chemistry	3,743	3,747	3,744	3,837	4,274
Math, Comp Sci, & Stat	13,573	14,110	14,493	14,913	14,709
Nutrition and Family Studies	2,276	1,982	2,303	2,078	
Physics	1,881	1,743	2,276	1,929	1,626
<b><i>College of Science Total</i></b>	<b><i>33,310</i></b>	<b><i>33,201</i></b>	<b><i>35,045</i></b>	<b><i>35,941</i></b>	<b><i>35,417</i></b>

\*In Spring 2009 Environmental Science was moved from Biological & Environmental Sciences to Agriculture.

### Historical Fall SCH's by Department (continued)

	<u>2007</u>	<u>2008</u>	<u>2009</u>	<u>2010</u>	<u>2011</u>
General and Basic Studies	1,276	98	77	92	75
<b><i>Division of General and Basic Studies Total</i></b>	<b><i>1,276</i></b>	<b><i>98</i></b>	<b><i>77</i></b>	<b><i>92</i></b>	<b><i>75</i></b>
Freshmen Foundations		1,351	1,392	1,415	1,474
<b><i>Freshman Foundation Total</i></b>		<b><i>1,351</i></b>	<b><i>1,392</i></b>	<b><i>1,415</i></b>	<b><i>1,474</i></b>
Military Science		13	26	26	
<b><i>Military Science Total</i></b>		<b><i>13</i></b>	<b><i>26</i></b>	<b><i>26</i></b>	
<b><i>Total</i></b>	<b><i>104,505</i></b>	<b><i>106,166</i></b>	<b><i>109,869</i></b>	<b><i>112,219</i></b>	<b><i>111,224</i></b>

## Spring 2012 SCH's by Department and Level

Student rank classification is used to determine SCH level according to BOR definition.

	<u><b>Lower UG</b></u>	<u><b>Upper UG</b></u>	<u><b>Graduate</b></u>	<u><b>Total</b></u>
Accounting, Fin & Econ	1,017	2,838	291	4,146
Mgmt, Marketing and Gen Bus	1,008	2,637	273	3,918
<b><i>College of Business Total</i></b>	<b>2,025</b>	<b>5,475</b>	<b>564</b>	<b>8,064</b>
Education Professions	1,738	3,061	1,724	6,523
Health & Human Performance	2,254	2,569	228	5,051
Psychology	3,645	2,358	823	6,826
Stdnt Tchng & Prof Educ Srvc		624	156	780
<b><i>College of Education Total</i></b>	<b>7,637</b>	<b>8,612</b>	<b>2,931</b>	<b>19,180</b>
Engineering	671	2,122	184	2,977
Engineering Technology	306	589		895
<b><i>College of Engineering and Engineering Technology Total</i></b>	<b>977</b>	<b>2,711</b>	<b>184</b>	<b>3,872</b>
English & Foreign Languages	6,246*	2,753	360	9,359
History	3,807	1,755	21	5,583
Mass Communications	2,497	1,654		4,151
Performing Arts	1,550	1,445		2,995
Social Sciences	4,144	5,082	27	9,253
Visual Arts	1,197	1,695	3	2,895
<b><i>College of Liberal Arts Total</i></b>	<b>19,441</b>	<b>14,384</b>	<b>411</b>	<b>34,236</b>
Graduate Nursing			800	800
Undergraduate Nursing	783	5,718		6,501
<b><i>College of Nursing Total</i></b>	<b>783</b>	<b>5,718</b>	<b>800</b>	<b>7,301</b>
Agriculture	1,818	2,490	382	4,690
Biology & Health Sciences	4,860	3,597	4	8,461
Chemistry	2,358	1,479	176	4,013
Math, Comp Sci, & Stat	7,786**	3,303	267	11,356
Physics	972	970		1,942
<b><i>College of Science Total</i></b>	<b>17,794</b>	<b>11,839</b>	<b>829</b>	<b>30,462</b>

\* Includes 340 developmental

\*\* Includes 800 developmental

### Spring 2012 SCH's by Department and Level (continued)

	<u>Lower UG</u>	<u>Upper UG</u>	<u>Graduate</u>	<u>Total</u>
General and Basic Studies		89		89
<i>Division of General and Basic Studies Total</i>		<i>89</i>		<i>89</i>
Freshmen Foundations	211	8		219
<i>Freshman Foundations Total</i>	<i>211</i>	<i>8</i>		<i>219</i>
Academic & Student Affairs	54	48		102
<i>Academic &amp; Student Affairs Total</i>	<i>54</i>	<i>48</i>		<i>102</i>
<i>University Total</i>	<i>48,922</i>	<i>48,884</i>	<i>5,719</i>	<i>103,525</i>



## Historical Spring SCH's by Department

	<b><u>2008</u></b>	<b><u>2009</u></b>	<b><u>2010</u></b>	<b><u>2011</u></b>	<b><u>2012</u></b>
Accounting, Fin & Econ	4,020	3,780	4,329	4,248	4,146
Mgmt, Marketing and Gen Bus	5,142	4,761	4,083	3,960	3,918
<b><i>College of Business Total</i></b>	<b><i>9,162</i></b>	<b><i>8,541</i></b>	<b><i>8,412</i></b>	<b><i>8,208</i></b>	<b><i>8,064</i></b>
Educ Leadership & Instr Tech^	2,328	2,004	2,365	2,223	
Education Professions^					6,523
Health & Human Performance	5,343	5,041	5,210	5,143	5,051
Psychology	5,628	5,923	6,067	6,649	6,826
Teacher Education^	3,812	3,816	4,986	4,352	
Student Tchng & Prof Educ Srvc	744	567	804	819	780
<b><i>College of Education Total</i></b>	<b><i>17,855</i></b>	<b><i>17,351</i></b>	<b><i>19,432</i></b>	<b><i>19,186</i></b>	<b><i>19,180</i></b>
Engineering	2,745	2,711	2,712	3,002	2,977
Engineering Technology	1,149	959	826	765	895
<b><i>College of Engineering and Engineering Technology Total</i></b>	<b><i>3,894</i></b>	<b><i>3,670</i></b>	<b><i>3,538</i></b>	<b><i>3,767</i></b>	<b><i>3,872</i></b>
English & Foreign Languages	8,437	8,564	9,169	9,572	9,359
History	4,641	5,658	5,682	5,802	5,583
Mass Communications	3,976	4,059	4,107	4,105	4,151
Performing Arts	2,965	2,893	3,011	3,228	2,995
Social Sciences#	7,822	7,900	8,463	8,699	9,253
Visual Arts	2,616	2,652	2,697	3,044	2,895
<b><i>College of Liberal Arts Total</i></b>	<b><i>30,457</i></b>	<b><i>31,726</i></b>	<b><i>33,129</i></b>	<b><i>34,450</i></b>	<b><i>34,236</i></b>
Graduate Nursing	553	522	553	615	800
Undergraduate Nursing	6,128	6,232	6,134	6,328	6,501
<b><i>College of Nursing Total</i></b>	<b><i>6,681</i></b>	<b><i>6,754</i></b>	<b><i>6,687</i></b>	<b><i>6,943</i></b>	<b><i>7,301</i></b>
Agriculture*#	1,651	2,824	3,170	3,606	6,523
Biological & Envr Sciences*	9,208				
Biology & Health Sciences*		7,779	8,115	8,452	8,461
Chemistry	3,495	3,400	3,719	4,106	4,013
Math, Comp Sci, & Stat	11,939	11,762	12,153	12,027	11,356
Nutrition and Family Studies#	2,354	2,067	2,465	2,282	
Physics	1,646	1,724	1,919	1,879	1,942
<b><i>College of Science Total</i></b>	<b><i>30,293</i></b>	<b><i>29,556</i></b>	<b><i>31,541</i></b>	<b><i>32,352</i></b>	<b><i>30,462</i></b>

\*In Spring 2009 Environmental Science was moved from Biological & Environmental Sciences to Agriculture.

^In Fall 2011 Educ Leadership & Instr Tech and Teacher Education were combined into Education Professions.

#In Fall 2011 Nutrition and Family Studies was split between Social Sciences and Agriculture.

### Historical Spring SCH's by Department (continued)

	<u>2008</u>	<u>2009</u>	<u>2010</u>	<u>2011</u>	<u>2012</u>
General and Basic Studies	177	98	67	87	89
<b><i>Division of General and Basic Studies Total</i></b>	<b><i>177</i></b>	<b><i>98</i></b>	<b><i>67</i></b>	<b><i>87</i></b>	<b><i>89</i></b>
Freshmen Foundations	57	296	274	252	219
<b><i>Freshman Foundation Total</i></b>	<b><i>57</i></b>	<b><i>296</i></b>	<b><i>274</i></b>	<b><i>252</i></b>	<b><i>219</i></b>
Military Science	12	14	18	30	
<b><i>Military Science Total</i></b>	<b><i>12</i></b>	<b><i>14</i></b>	<b><i>18</i></b>	<b><i>30</i></b>	
Academic & Student Affairs					102
<b><i>Academic &amp; Student Affairs Total</i></b>					<b><i>102</i></b>
<b><i>Total</i></b>	<b><i>98,588</i></b>	<b><i>98,006</i></b>	<b><i>103,098</i></b>	<b><i>105,275</i></b>	<b><i>103,525</i></b>

## Academic Year 2011 -2012 Average Teaching Load by Department

Accounting, Fin & Econ	20.20
Mgmt, Marketing and Gen Bus	19.50
<b><i>College of Business Total</i></b>	<b><i>19.82</i></b>
Education Professions	26.09
Health & Human Performance	30.63
Psychology	33.54
Student Tchng & Prof Educ Srvc	18.60
<b><i>College of Education Total</i></b>	<b><i>27.87</i></b>
Engineering	25.42
Engineering Technology	32.60
<b><i>College of Engineering and Engineering Technology Total</i></b>	<b><i>27.53</i></b>
English & Foreign Languages	25.77
History	25.44
Mass Communications	28.10
Performing Arts	30.21
Social Sciences	27.79
Visual Arts	27.00
<b><i>College of Liberal Arts Total</i></b>	<b><i>27.52</i></b>
Graduate Nursing	48.00
Undergraduate Nursing	34.12
<b><i>College of Nursing Total</i></b>	<b><i>34.98</i></b>
Agriculture	26.75
Biology & Health Sciences	27.83
Chemistry	26.38
Math, Comp Sci, & Stat	28.27
Physics	31.80
<b><i>College of Science Total</i></b>	<b><i>27.87</i></b>
<b><i>University Total</i></b>	<b><i>27.92</i></b>

Teaching load only reflects teaching load in organized class sections and does not reflect other required work duties such as course grading, curriculum development, accreditation, advising, research, public service and university service.

## Financial Aid

	<u><b>06-07</b></u>	<u><b>07-08</b></u>	<u><b>08-09</b></u>	<u><b>09-10</b></u>
Unduplicated Count of Students	9,828	9,776	9,969	10,358
Undergraduates Receiving Aid	6,201	6,400	6,556	6,978
% of Undergraduates Receiving Aid	74%	77%	77%	79%
Amount of Undergraduate Aid	\$37,426,588	\$39,984,240	\$44,056,716	\$49,475,010
Graduates Receiving Aid	769	912	834	909
% of Graduates Receiving Aid	52%	59%	54%	55%
Amount of Graduate Aid	\$4,545,992	\$5,615,722	\$6,029,461	\$6,775,767
Students Receiving Federal Aid	4,390	4,338	4,442	5,100
Amount of Federal Aid	\$27,491,063	\$27,279,743	\$30,642,301	\$39,352,112

### Fall 2010 Full-Time First-Time UG Students Receiving Aid

<u>Type of Aid</u>	<u><b>% Receiving Aid</b></u>	<u><b>Average Amount</b></u>
Grants/Scholarships	89%	\$5,854
PELL Grants	41%	\$4,390
Federal Student Loans	34%	\$4,749

### Full-Time Average Annual Fees 2011-2012 (Fall and Spring Semesters)

	<u><b>Undergraduate</b></u> <u><b>(15 hours)</b></u>	<u><b>Graduate</b></u> <u><b>(9 hours)</b></u>
In-State Tuition & Fees	4,383	4,837
Out-of-State Tuition & Fees	13,205	13,659

### Student Charges 2011-2012 Academic Year

Room (based on semi-private dorm)	3,350
Board (maximum plan)	2,398

**Revenues**  
**Operating (Unrestricted) Fund**

	<u><b>Actual</b></u> <u><b>2009-2010</b></u>	<u><b>%</b></u>	<u><b>Actual</b></u> <u><b>2010-2011</b></u>	<u><b>%</b></u>	<u><b>Budgeted</b></u> <u><b>2011-2012</b></u>	<u><b>%</b></u>
<b>Revenues by Source</b>						
State Funds	\$29,751,083	47.9%	\$31,146,338	45.8%	\$28,793,790	44.3%
Interagency Transfers - ARRA	\$5,749,198	9.3%	\$9,210,526	13.6%		
Self-Generated Funds	\$26,606,231	42.8%	\$27,579,976	40.6%	\$36,159,830	55.7%
<b>Total Revenues</b>	<b>\$62,106,512</b>	<b>100.0%</b>	<b>\$67,936,840</b>	<b>100.0%</b>	<b>\$64,953,620</b>	<b>100.0%</b>

**Expenditures**  
**Operating (Unrestricted) Fund**

	<u><b>Actual</b></u> <u><b>2009-2010</b></u>	<u><b>%</b></u>	<u><b>Actual</b></u> <u><b>2010-2011</b></u>	<u><b>%</b></u>	<u><b>Budgeted</b></u> <u><b>2011-2012</b></u>	<u><b>%</b></u>
<b>Expenditures by Function</b>						
Instruction	\$26,507,344	42.7%	\$28,151,016	43.7%	\$26,674,266	41.1%
Research	\$2,898,630	4.6%	\$2,902,739	4.5%	\$3,626,829	5.6%
Academic Support	\$5,590,258	9.0%	\$5,773,254	9.0%	\$6,074,896	9.3%
Student Services	\$3,972,160	6.4%	\$3,939,503	6.1%	\$3,850,010	5.9%
Institutional Services	\$7,628,724	12.3%	\$7,518,403	11.7%	\$7,899,753	12.2%
Scholarships/Fellowships	\$4,278,333	6.9%	\$4,619,411	7.2%	\$4,663,440	7.2%
Plant Operations/Maintenance	\$5,394,862	8.7%	\$5,987,647	9.3%	\$6,530,334	10.1%
Transfers out of agency	\$1,813,673	2.9%	\$1,665,923	2.6%	\$1,962,095	3.0%
Athletics	\$3,342,003	5.4%	\$3,258,322	5.0%	\$3,087,393	4.7%
Other	\$680,525	1.1%	\$559,667	0.9%	\$581,604	0.9%
<b>Total Expenditures</b>	<b>\$62,106,512</b>	<b>100.0%</b>	<b>\$64,375,884</b>	<b>100.0%</b>	<b>\$64,953,620</b>	<b>100.0%</b>

	<u><b>Actual</b></u> <u><b>2009-2010</b></u>	<u><b>%</b></u>	<u><b>Actual</b></u> <u><b>2010-2011</b></u>	<u><b>%</b></u>	<u><b>Budgeted</b></u> <u><b>2011-2012</b></u>	<u><b>%</b></u>
<b>Expenditures by Expense Category</b>						
Salaries	\$35,922,430	56.4%	\$35,850,526	55.7%	\$34,049,643	52.4%
Other Compensation	\$693,676	1.1%	\$652,681	1.0%	\$691,112	1.1%
Related Benefits	\$10,932,120	16.9%	\$12,319,212	19.1%	\$14,131,329	21.8%
Travel	\$86,018	0.4%	\$106,899	0.2%	\$129,252	0.2%
Operating Services	\$3,236,642	5.9%	\$3,177,395	4.9%	\$3,638,280	5.6%
Supplies	\$430,254	1.1%	\$516,478	0.8%	\$698,910	1.1%
Professional Services	\$159,779	0.4%	\$153,920	0.3%	\$165,543	0.2%
Other Charges	\$8,582,372	12.5%	\$8,810,051	13.7%	\$8,635,937	13.3%
Interagency Transfers	\$1,813,673	3.1%	\$1,665,923	2.6%	\$1,962,095	3.0%
General Acquisitions	\$153,850	0.4%	\$237,189	0.4%	\$751,519	1.2%
Library Acquisitions	\$83,437	0.5%	\$86,686	0.1%	\$100,000	0.1%
Major Repairs	\$12,259	1.3%	\$798,926	1.2%	\$0	0.0%
<b>Total Expenditures</b>	<b>\$62,106,512</b>	<b>100.0%</b>	<b>\$64,375,884</b>	<b>100.0%</b>	<b>\$64,953,620</b>	<b>100.0%</b>

## Faculty/Staff

### Fall 2011 Full-Time Faculty by Rank

	<u>Tenured</u>	<u>On tenure track</u>	<u>Not on tenure track</u>	<u>Total</u>	<u>Percent</u>
Professors	53		1	54	18.1%
Associate Professors	51	1	1	53	17.7%
Assistant Professors	51	76	9	136	45.5%
Instructors			56	56	18.7%
<b>Total</b>	<b>155</b>	<b>77</b>	<b>67</b>	<b>299</b>	<b>100.0%</b>

### Fall 2011 Full-Time Faculty by Highest Degree

	<u>Tenured</u>	<u>On tenure track</u>	<u>Not on tenure track</u>	<u>Total</u>	<u>Percent</u>
Bachelors			1	1	0.3%
Masters	32	21	48	101	33.8%
Terminal Masters	12	7	9	28	9.4%
Doctorate	111	49	9	169	56.5%
<b>Total</b>	<b>155</b>	<b>77</b>	<b>67</b>	<b>299</b>	<b>100.0%</b>

### Fall 2011 Full-Time Faculty by Race and Gender

	<u>Men</u>	<u>Women</u>	<u>Total</u>	<u>Percent</u>
Asian	18	3	21	7.0%
Black, non-Hispanic	4	11	15	5.0%
Foreign	4	2	6	2.0%
Hispanic	3	4	7	2.4%
White, non-Hispanic	135	112	247	82.6%
Two or more races	2	1	3	1.0%
<b>Total</b>	<b>166</b>	<b>133</b>	<b>299</b>	<b>100.0%</b>

### Full-Time Equivalent Faculty

<b>11-12</b>	357.3
<b>10-11</b>	361.7
<b>09-10</b>	343.1
<b>08-09</b>	362.3
<b>07-08</b>	368.7
<b>06-07</b>	339.3
<b>05-06</b>	343.0
<b>04-05</b>	343.2

### Student to Faculty Ratio\*

<b>Fall 2011</b>	21 to 1
<b>Fall 2010</b>	20 to 1
<b>Fall 2009</b>	21 to 1
<b>Fall 2008</b>	19 to 1
<b>Fall 2007</b>	20 to 1
<b>Fall 2006</b>	21 to 1
<b>Fall 2005</b>	22 to 1

\* (Full-Time students + 1/3 Part-Time students) / (Full-Time faculty + 1/3 Part-Time faculty)

### Fall 2011 Classes taught by Faculty Type

	<b>Dev</b>	<b>Lower Level</b>	<b>Upper Level</b>	<b>Graduate</b>	<b>Total</b>
Full-Time Faculty	9	835	680	220	1,744
Part-Time Faculty	19	193	76	28	316
<b>Total</b>	<b>28</b>	<b>1,028</b>	<b>756</b>	<b>248</b>	<b>2,060</b>

### Fall 2011 Employees by Occupational Activity

	<b><u>Full-Time</u></b>	<b><u>Part-Time</u></b>	<b><u>Total</u></b>	<b><u>Percent</u></b>
Primarily Instruction	299	137	436	49.9%
Executive/administrative/managerial	49	0	49	5.6%
Other professionals (support/service)	152	7	159	18.2%
Technical and paraprofessionals	7	0	7	0.8%
Clerical and secretarial	119	5	124	14.2%
Skilled crafts	5	0	5	0.6%
Service/Maintenance	91	2	93	10.7%
<b>Total</b>	<b>722</b>	<b>151</b>	<b>873</b>	<b>100.0%</b>

### Fall 2011 Employees by Race and Gender

	<b><u>Men</u></b>	<b><u>Women</u></b>	<b><u>Total</u></b>	<b><u>Percent</u></b>
American Indian/Alaska Native		1	1	0.1%
Asian	21	7	28	3.2%
Black, non-Hispanic	48	77	125	14.3%
Foreign, Non-Resident	6	3	9	1.0%
Hispanic	6	6	12	1.4%
White, non-Hispanic	288	406	694	79.5%
Two or more races	3	1	4	0.5%
<b>Total</b>	<b>372</b>	<b>501</b>	<b>873</b>	<b>100.0%</b>

## Facilities

	<b><u>Owned</u></b>	<b><u>Leased</u></b>	<b><u>Total</u></b>
Land Holdings	500.95 Acres	265.45 Acres	766.40 Acres
Building Gross Square Footage	1,537,646	344,096	1,881,742
Building Net Assignable Square Footage	879,376	265,289	1,144,665

## Net Assignable Space by Allocation Category

	<b><u>Square Feet</u></b>	<b><u>% Total</u></b>
Academic	475,202	54.0%
Administrative	61,591	7.0%
Athletics	87,650	10.0%
Auxiliary*	207,767	23.6%
Residential	47,166	5.4%
<b>Total</b>	<b>879,376</b>	<b>100.0%</b>

\* Does not include 265,289 square feet for Burton Coliseum which is leased from Calcasieu Parish Police Jury and is used for basketball games and graduation twice a year.