

McNeese

STATE UNIVERSITY



Fact Book 2009-2010

Prepared by: Office of Institutional Research
www.mcneese.edu/ir

McNeese State University
4205 Ryan Street
Lake Charles, LA 70609

Fact Book 2009 – 2010
(Revised Feb, 2011)

Table of Contents

History.....	1
Mission Statement.....	2
Institutional Goals.....	3
Organizational Chart.....	4
Accreditation	5
Inventory of Degree Programs	6
Fall Enrollment	9
Historical Fall Enrollment Data Since 1939	29
First-Time Freshmen	31
Transfers.....	41
Spring Enrollment	47
Historical Spring Enrollment Data Since 1940	67
Degrees Conferred	68
Student Credit Hours (SCH).....	75
Financial Aid	83
Full-Time Average Annual Fees	84
Revenues	85
Expenditures.....	85
Faculty/Staff	86
Facilities	88

McNEESE STATE UNIVERSITY

University Accomplishments During Presidency of Dr. Robert D. Hebert

The 2009-2010 McNeese Fact Book is dedicated to Dr. Robert D. Hebert in recognition of his 41 years of service at McNeese State University, including 23 years as president.

Through his exemplary leadership and guidance, McNeese State University has experienced record enrollment increases (8,992 in fall 2005), endured tremendous challenges (recovered from over \$30 million in damages from Hurricane Rita on September 24, 2005) and strengthened its commitment to academic excellence (100% accreditation of all programs required for national accreditation), student success (100% medical school acceptance rate four times in 10 years), fiscal responsibility (fewest audit findings in the University of Louisiana System in the past 10 years) and university-community alliances (creation of the Southwest Louisiana Entrepreneurial and Economic Development Center).

Other University accomplishments during the presidency of Dr. Hebert include:

Initiating selective admissions in 2000 and strengthening the requirements in the fall of 2005.



Creating numerous centers and institutes: (1) Violet H. Howell Institute for the Study of Industry-Community Relations, (2) Groundwater Research Institute, (3) Center for Management Development, (4) Institute of Performing Arts, (5) Real Estate and Professional Development Institute, (6) Center for Economic Education, (7) Lake Area Industries/McNeese Engineering Institute, (8) Louisiana Environmental Research Center, (9) H. C. Drew Center for Economic Development, (10) H. C. Drew Institute, (11) Kay Dore' Counseling Center and (12) Small Business Development Center.

Emphasizing individualized attention to students. (McNeese was one of only three universities in the South and 12 in the nation ranked in the national listing of "Schools that Offer a High Level of Individual Academic Attention from Faculty" in The College Catalog 2001, published by Kaplan and Newsweek. The ratings are based on a national survey of high school guidance counselors.)

Adopting the University Motto, "Excellence with a Personal Touch," in 1989 on McNeese's 50th anniversary.

Implementing an extensive emergency and communications system to provide a quick response in the event of a sudden threat to students and employees.

Completing several university buildings and countless renovations of existing facilities, and enhanced parking and paving repairs. Dr. Hebert was instrumental in securing private funds, grants and state appropriations that total \$84,904,748 in new construction and major renovations including 15 new structures or facilities, \$20,987,679 in major repairs and more than \$27 million in funding for renovations currently underway or in the planning stages.

Placing a major emphasis on private fund raising including creating a development office and raising McNeese Foundation assets from less than \$1 million in 1987 to over \$55 million. Under Dr. Hebert's presidency, the McNeese Foundation assets have become the third highest in the University of Louisiana System and the highest among public universities our size in the state.

History

McNeese State University was established by the Louisiana Legislature in 1939. The institution was first named Lake Charles Junior College, and was a division of Louisiana State University with the opening session beginning on September 11, 1939. The following fall, the school changed its name to John McNeese Junior College to honor John McNeese, a renowned Southwest Louisiana educator and the first superintendent of schools in Imperial Calcasieu Parish. In 1950, McNeese became a four-year college in its own right and came under the authority of the Louisiana Board of Education. Finally, in 1970, McNeese State University became the official name of the school.

McNeese achieved Commission on Colleges/Southern Association of Colleges and Schools accreditation in 1954 and maintains its regional accreditation status as a Level IV institution authorized to award associate, bachelor, master, and specialist degrees. The University also provides opportunities for continuing education in support of its mission to value lifelong learning. As a member of the University of Louisiana System and a selective admissions institution, McNeese offers degrees through the department of general and basic studies and six academic colleges: Business, Education, Engineering and Engineering Technology, Liberal Arts, Nursing, and Science. McNeese's student body is comprised of students from throughout Louisiana, the United States, and over 50 countries. McNeese's athletic programs are NCAA-certified for competition at Division I level.

The McNeese State University campus in Lake Charles, Louisiana, features 68 buildings on 500 acres dotted with live oak trees and azalea bushes. The McNeese community continues to use the university's three original structures — Kaufman Hall, Ralph O. Ward Memorial Gym (the Arena), and Francis G. Bulber Auditorium. Bulber Auditorium, a striking example of Art Deco architecture, is listed on the National Register of Historic Places.

McNeese State University upholds a long tradition of service to the Southwest Louisiana community and the nation. The University motto of "Excellence with a Personal Touch" extends beyond the classroom to offering help to others in times of need. During World War II, the campus was the headquarters of the Louisiana Maneuvers, an extensive military exercise to prepare American soldiers for battle. In 1957, the McNeese community gave aid and comfort to the victims of Hurricane Audrey and served as the National Guard's base of rescue operations. Recently, McNeese provided shelter for New Orleans residents and university students fleeing from Hurricane Katrina. McNeese faced one of its greatest challenges when Hurricane Rita struck in the fall of 2005. The storm caused devastating damage to campus facilities and infrastructure. The recovery effort after Hurricane Rita demonstrated the resilience and commitment of the McNeese faculty, staff, and students to higher education and to moving forward in support of the core values of academic excellence, student success, fiscal responsibility, and university/community alliances.

Mission Statement

McNeese State University, a selective admissions institution, provides education, research, and service that support our core values of academic excellence, student success, fiscal responsibility, and university-community alliances. The University's fundamental educational mission is to offer associate, baccalaureate, and specific graduate curricula distinguished by academic excellence. The University engages in collaborative ventures to benefit industry and to enhance economic development and cultural growth in this region and beyond.

The foundation for student success begins with faculty commitment to excellence in teaching, research, and creative and scholarly activity. At McNeese State University, a member of the University of Louisiana System, students cultivate skills for critical thinking and effective expression and gain an understanding of the global community. The learning and social environment integrates discipline-specific knowledge with the values of lifelong learning, ethical responsibility, and civic engagement.

Adopted by McNeese State University - 2/21/05

Approved by the Board of Supervisors of the University of Louisiana System - 4/29/05

Institutional Goals

Adopted 6/29/05

Revised 8/11/05

Academic Excellence

1. Emphasize excellence in instruction.
2. Develop programs that are viable, innovative, and relevant to market needs.
3. Infuse a global outlook and ethical standards in course content and curriculum development.
4. Uphold the commitment to regional and national program accreditation.
5. Encourage undergraduate and graduate research in appropriate disciplines.

Student Success

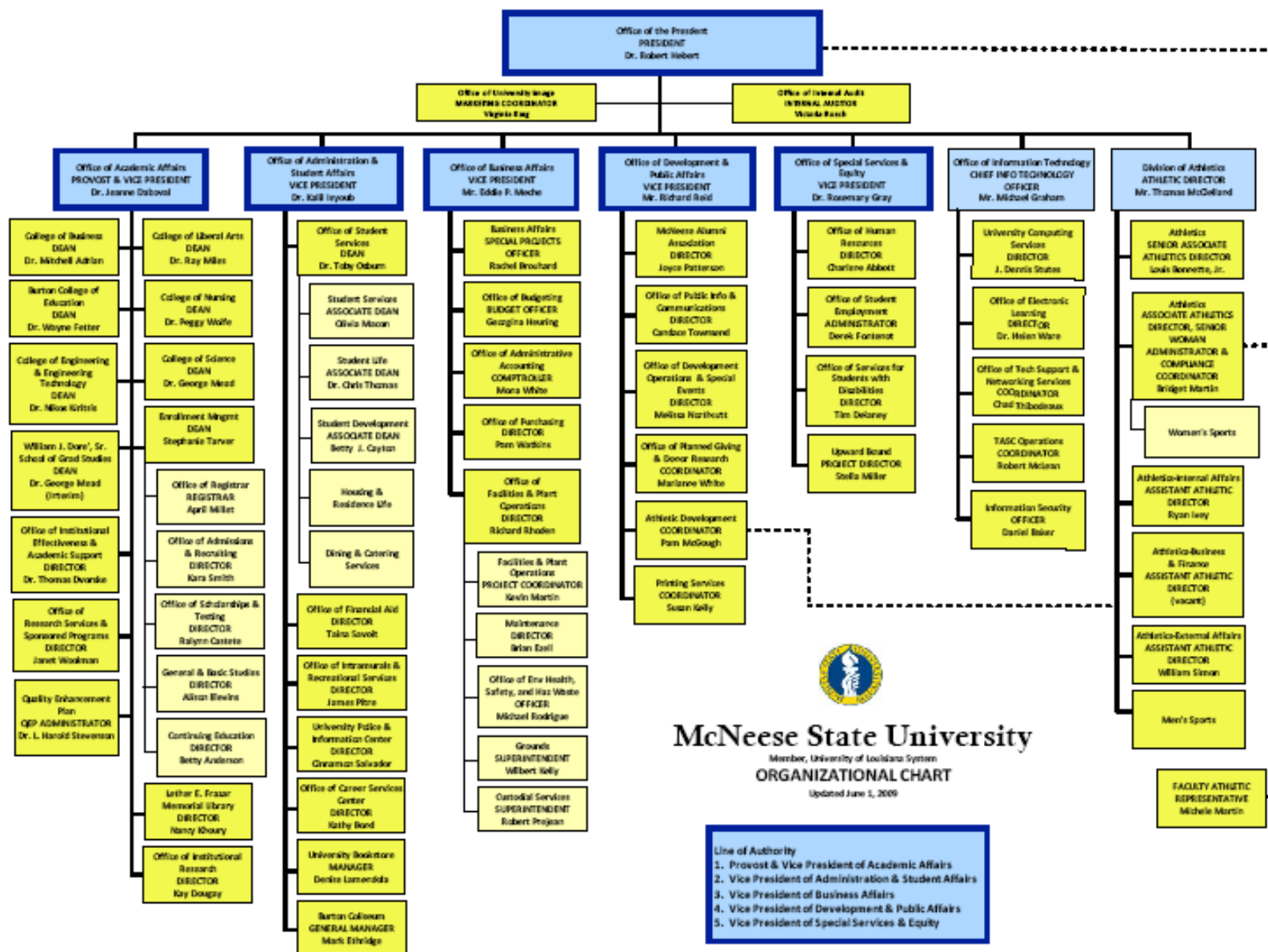
1. Foster a climate that enhances student learning, focuses on retention, values advising, and enriches the quality of campus-life.
2. Nurture an environment to support cultural diversity.
3. Present students opportunities for leadership.
4. Provide venues for learning to attract non-traditional students.
5. Provide an aesthetically-pleasing campus, functional facilities, and state-of-the-art equipment.

Fiscal Responsibility

1. Engage in continuous assessment, evaluation, and improvement.
2. Utilize the role of technology to increase the efficiency and effectiveness of campus operations.
3. Garner outside funding sources to support the University mission.
4. Capitalize of efficient use of resources.
5. Support efforts to obtain federal funding.

University-Community Alliances

1. Support mutually beneficial university/community collaborations.
2. Strengthen economic development through partnerships that provide technical assistance and information transfer to business and industry.
3. Enhance artistic, humanistic, and cultural opportunities in the area.
4. Retain certification and maintain competition in NCAA athletic programs
5. Partner with educational agencies to improve the quality of life in our region.



Accreditation

McNeese State University is accredited by the Commission on Colleges of the Southern Association of Colleges and Schools, 1866 Southern Lane, Decatur, Georgia 30033-4097, P-404.679.4500, www.sacscoc.org, to award associate, bachelor, master, and specialist degrees. A comprehensive list of other agencies included in the Board of Regents General Policy on Program Accreditation that have accredited or approved McNeese academic programs follows:

- AACSB International – The Association to Advance Collegiate Schools of Business International, 7777 South Harbor Island Blvd., Suite 750, Tampa, FL 33602-5730, P- (813) 769-6500, www.aacsb.edu/.
- AAFCS – American Association of Family and Consumer Sciences, 400 N. Columbus St., Suite 202, Alexandria, VA 22314, P- (703) 706-4600, www.aafcs.org.
- ACS – American Chemical Society, 1155 Sixteenth St. NW, Washington, DC 20036, P- (800) 227-5558, www.acs.org.
- CADE – Commission on Accreditation for Dietetics Education, American Dietetic Association, 120 S. Riverside Plaza, Suite 2000, Chicago, IL 60606-6995, P- (800)877-1600, www.eatright.org.
- CAC/ABET Inc. – Computing Accreditation Commission of the Accreditation Board of Engineering and Technology, 111 Market Place, Suite 1050, Baltimore, MD 21202-4012, P- (410) 347.7700, www.abet.org.
- CCNE – Commission on Collegiate Nursing Education for American Association of College of Nursing, One Dupont Circle, NW, Suite 530, Washington, DC 20036, P- (202)463-6930, www.aacn.nche.edu/index.htm.
- EAC/ABET Inc. – Engineering Accreditation Commission of the Accreditation Board of Engineering and Technology, 111 Market Place, Suite 1050, Baltimore, MD 21202-4012, P- (410) 347-7700, www.abet.org.
- JRCERT – Joint Review Committee on Education in Radiologic Technology, 20 N. Wacker Drive, Suite 2850, Chicago, IL 60606-3182, P- (312) 704-5300, www.jrcert.org.
- NAACLS – National Accrediting Agency for Clinical Laboratory Sciences, 8410 W. Bryn Mawr Ave., Suite 670, Chicago, IL 60631, P- (773) 714-8880, www.naacls.org.
- NASAD – National Association of Schools of Art and Design, 11250 Roger Bacon Dr., Suite 21, Reston, VA 20190, P-(703) 437-0700, <http://nasad.arts-accredit.org/>.
- NASM – National Association of Schools of Music, 11250 Roger Bacon Drive, Suite 21, Reston, VA 20190-5248, P-(703) 437-0700, <http://nasam.arts-accredit.org>.
- NCATE – National Council for Accreditation of Teacher Education, 2010 Massachusetts Ave. NW, Suite 500, Washington, DC 20036, P- (202) 466-7496, www.ncate.org.
- NLNAC – National League for Nursing Accrediting Commission, 61 Broadway, New York, NY 10006, P- (800) 669-1656, www.nln.org.
- TAC/ABET Inc. – Technology Accreditation Commission of the Accreditation Board of Engineering and Technology, 111 Market Place, Suite 1050, Baltimore, MD 21202-4012, P- (410) 347-7700, www.abet.org.

Other agencies that have approved or certified programs include:

- AAHPERD/NASPE – American Alliance for Health, Physical Education, Recreation and Dance/National Association for Sport and Physical Education
- ACEI – Association for Childhood Education International
- CEC – Council for Exceptional Children
- ISTE – International Society for Technology Education
- BESE – Louisiana Board of Elementary and Secondary Education
- ELCC – Educational Leaders Constituency Consortium
- LSBN – Louisiana State Board of Nursing
- NAEYC – National Association for the Education of Young Children
- NCAA – National Collegiate Athletic Association
- NCTE – National Council of Teachers of English
- NCTM – National Council of Teachers of Mathematics
- NSTA – National Science Teachers Association
- OAKE – Organization of American Kodály Educators

Inventory of Degree Programs

General and Basic Studies		
General Studies		A.G.S.
General Studies		B.G.S.
College of Business		
Accounting		B.S.
Business Administration		M.B.A.
Finance		B.S.
General Business Administration		B.S.
Management		B.S.
Marketing		B.S.
Burton College of Education		
Athletic Training		B.S.
Business Education-Grades 6-12		B.S.
Curriculum and Instruction		M.Ed.
Early Childhood Education-Grades PK-3		B.S.
Educational Leadership		M.Ed.
Educational Leadership		Ed.S.
Educational Technology Leadership		M.Ed.
Elementary Education-Grades 1-5		B.S.
Elementary Education-Grades 1-5		M.A.T.
Health and Physical Education-Grades K-12		B.S.
Health and Human Performance, General		B.S.
Health and Human Performance		M.S.
Instructional Technology		M.S.
Psychology		B.S.
Psychology		M.A.
School Counseling		M.Ed.
Secondary Education-Grades 6-12		M.A.T.
Special Education		M.Ed.
Special Education, General		B.A.
Special Education Mild/Moderate-Grades 1-12		M.A.T.
College of Engineering & Engineering Technology		
Engineering		B.S.
Engineering		M. Eng.
Engineering Technology		A.S.
Engineering Technology		B.S.

College of Liberal Arts		
Art		B.A.
Art Education-Grades K-12		B.A.
Communication Studies		B.A.
Communication Studies Education-Grades 6-12		B.S.
Creative Writing		M.F.A.
Criminal Justice		B.S.
English		B.A.
English		M.A.
English Education-Grades 6-12		B.A.
Foreign Languages Education-Grades 6-12		B.A.
French		B.A.
Government		B.A.
History		B.A.
Liberal Studies		B.A.
Mass Communication		B.S.
Music Education- Instrumental Grades K-12		B.M.Ed.
Music Education-Vocal Grades K-12		B.M.Ed.
Music Performance		B.M.
Paralegal Studies		A.A.
Social Studies Education-Grades 6-12		B.A.
Sociology		B.A.
Spanish		B.A.
Theatre Arts		B.A.
College of Nursing		
Nursing		A.D.N.
Nursing		B.S.N.
Nursing		M.S.N.
College of Science		
Agricultural Education-Grades 6-12		B.S.
Agricultural Sciences		B.S.
Biological Science		B.S.
Biology Education-Grades 6-12		B.S.
Chemistry		B.S.
Chemistry Education-Grades 6-12		B.S.
Clinical Laboratory Science		B.S.
Computer Information Technology		A.S.
Computer Science		B.S.
Environmental and Chemical Sciences		M.S.
Environmental Science Education-Grades 6-12		B.S.
Family and Consumer Sciences		B.S.
Mathematics Education-Grades 6-12		B.S.
Mathematical Sciences		M.S.
Mathematics		B.S.
Radiologic Sciences		B.S.
Physics		B.S.

This Page is Intentionally Left Blank

Fall Enrollment Fall 2009

Fall 2009 Enrollment by Level

	<u>Enrollment</u>	<u>Percent</u>
Undergraduate	7,535	87.2%
Graduate	1,110	12.8%
Total	8,645	100.0%

Fall 2009 Full-Time Equivalent Enrollment by Level

	<u>SCH's</u>	<u>FTE</u>	<u>Percent</u>
Undergraduate	102,175	8,514.6 (12 hours)	90.8%
Graduate	7,754	861.6 (9 hours)	9.2%
Total	109,929	9,376.2	100.0%

Fall 2009 Enrollment by Rank

	<u>Enrollment</u>	<u>Percent</u>
Early Admissions	486	5.6%
Freshman	2,617	30.3%
Sophomore	1,338	15.5%
Junior	1,197	13.8%
Senior	1,866	21.6%
Masters Candidate	843	9.8%
Education Specialist	11	.1%
Special Graduate	254	2.9%
Non-Credit/Non-Degree	33	.4%
Total	8,645	100.0%

Fall 2009 Enrollment by Full-Time/Part-Time Status

	<u>Undergraduate</u>	<u>Graduate</u>	<u>Total</u>	<u>Percent</u>
Full-Time	5,967	439	6,406	74.1%
Part-Time	1,568	671	2,239	25.9%
Total	7,535	1,110	8,645	100.0%

Fall 2009 Enrollment by Current Entry Status

	<u>Undergraduate</u>	<u>Graduate</u>	<u>Total</u>	<u>Percent</u>
Early Admissions	486		486	5.6%
Continuing	4,955	771	5,726	66.2%
First-Time Freshmen	1,317		1,317	15.2%
New Graduate		244	244	2.8%
Re-Entry	341	53	394	4.6%
Transfer	422	42	464	5.4%
Other Undergraduate	2		2	.1%
Visiting	12		12	.1%
Total	7,535	1,110	8,645	100.0%

Fall 2009 Enrollment by Gender

	<u>Undergraduate</u>	<u>Graduate</u>	<u>Total</u>	<u>Percent</u>
Female	4,626	760	5,386	62.3%
Male	2,909	350	3,259	37.7%
Total	7,535	1,110	8,645	100.0%

Fall 2009 Enrollment by Ethnicity

	<u>Undergraduate</u>	<u>Graduate</u>	<u>Total</u>	<u>Percent</u>
Amer Indian/Alaska Native	58	5	63	.7%
Asian/Pacific Islander	94	12	106	1.2%
Black	1,351	141	1,492	17.3%
Foreign	265	173	438	5.1%
Hispanic	102	12	114	1.3%
White	5,590	757	6,347	73.4%
Race/Ethnicity Unknown	75	10	85	1.0%
Total	7,535	1,110	8,645	100.0%

Fall 2009 Enrollment by Gender and Ethnicity

	<u>Female</u>	<u>Male</u>	<u>Total</u>	<u>Percent</u>
Amer Indian/Alaska Native	37	26	63	.7%
Asian/Pacific Islander	58	48	106	1.2%
Black	1,007	485	1,492	17.3%
Foreign	174	264	438	5.1%
Hispanic	76	38	114	1.3%
White	3,988	2,359	6,347	73.4%
Race/Ethnicity Unknown	46	39	85	1.0%
<i>Total</i>	<i>5,386</i>	<i>3,259</i>	<i>8,645</i>	<i>100.0%</i>

Fall 2009 Undergraduate Enrollment by Gender and Ethnicity

	<u>Female</u>	<u>Male</u>	<u>Total</u>	<u>Percent</u>
Amer Indian/Alaska Native	32	26	58	.8%
Asian/Pacific Islander	52	42	94	1.2%
Black	892	459	1,351	17.9%
Foreign	120	145	265	3.5%
Hispanic	68	34	102	1.4%
White	3,421	2,169	5,590	74.2%
Race/Ethnicity Unknown	41	34	75	1.0%
<i>Total</i>	<i>4,626</i>	<i>2,909</i>	<i>7,535</i>	<i>100.0%</i>

Fall 2009 Graduate Enrollment by Gender and Ethnicity

	<u>Female</u>	<u>Male</u>	<u>Total</u>	<u>Percent</u>
Amer Indian/Alaska Native	5		5	.4%
Asian/Pacific Islander	6	6	12	1.1%
Black	115	26	141	12.7%
Foreign	54	119	173	15.6%
Hispanic	8	4	12	1.1%
White	567	190	757	68.2%
Race/Ethnicity Unknown	5	5	10	.9%
<i>Total</i>	<i>760</i>	<i>350</i>	<i>1,110</i>	<i>100.0%</i>

Fall 2009 Undergraduate Enrollment by Rank and Ethnicity

	<u>EA</u>	<u>FR</u>	<u>SO</u>	<u>JR</u>	<u>SR</u>	<u>ND</u>	<u>Total</u>
Amer Indian/Alaska Native	4	21	5	10	16	2	58
Asian/Pacific Islander	8	30	17	11	27	1	94
Black	50	545	219	212	324	1	1,351
Foreign	1	80	72	49	59	4	265
Hispanic	3	37	20	14	27	1	102
White	408	1,881	988	893	1,398	22	5,590
Race/Ethnicity Unknown	12	23	17	8	15		75
Total	486	2,617	1,338	1,197	1,866	31	7,535

EA – Early Admissions
FR – Freshman
SO – Sophomore

JR – Junior
SR – Senior
ND – Non-Credit/Non-Degree

Fall 2009 Graduate Enrollment by Rank and Ethnicity

	<u>MC</u>	<u>ES</u>	<u>SG</u>	<u>ND</u>	<u>Total</u>
Amer Indian/Alaska Native	3		2		5
Asian/Pacific Islander	10		2		12
Black	90	4	47		141
Foreign	171		2		173
Hispanic	10		2		12
White	553	7	195	2	757
Race/Ethnicity Unknown	6		4		10
Total	843	11	254	2	1,110

MC – Masters Candidate
ES – Education Specialist

SG – Special Graduate
ND – Non-Credit/Non-Degree

Fall 2009 Admissions Scores First-Time Full-Time Graduates

<u>Test</u>	<u>Average</u>
GMAT Total	478
GRE Combined Verbal/Quant	940

Fall 2009 Enrollment by Age

	<u>Undergraduate</u>	<u>Graduate</u>	<u>Total</u>	<u>Percent</u>
Under 18	509		509	5.9%
18 – 19	2,116		2,116	24.5%
20 – 21	1,847	5	1,852	21.4%
22 – 24	1,448	287	1,735	20.1%
25 – 29	746	330	1,076	12.4%
30 – 34	363	170	533	6.2%
35 – 39	210	101	311	3.6%
40 – 49	217	142	359	4.1%
50 – 64	73	71	144	1.7%
Over 64	6	4	10	.1%
Total	7,535	1,110	8,645	100.0%

Fall 2009 Enrollment by Age Group

	<u>Undergraduate</u>	<u>Graduate</u>	<u>Total</u>	<u>Percent</u>
Under 25	5,920	292	6,212	71.9%
25 and Older	1,615	818	2,433	28.1%
Total	7,535	1,110	8,645	100.0%

Fall 2009 Average Age

	<u>Average Age</u>	<u>Median Age</u>
All Students	23.9	21
First-Time Freshmen	18.9	18
Undergraduate	22.7	21
Graduate	31.6	28

Fall 2009 Enrollment by Parish of Origin

<u>Parish</u>	<u>Enrollment</u>		<u>Parish</u>	<u>Enrollment</u>
Acadia	215		St Landry	147
Allen	300		St Martin	43
Ascension	19		St Mary	29
Assumption	7		St Tammany	37
Avoyelles	7		Tangipahoa	10
Beauregard	530		Terrebonne	18
Bienville	1		Vermilion	123
Bossier	10		Vernon	158
Caddo	24		Washington	7
Calcasieu	4,460		Webster	2
Cameron	244		West Baton Rouge	4
Catahoula	1		West Carroll	2
Concordia	3		West Feliciana	8
DeSoto	6		Winn	2
East Baton Rouge	54			
East Feliciana	1		Total Louisiana	7,647
Evangeline	123		% of Total Enrollment	88.5%
Franklin	1		Number of Parishes	57
Grant	23			
Iberia	42			
Iberville	8		Five Parish Total	6,066
Jackson	3		% of Total Enrollment	70.2%
Jefferson	29			
Jefferson Davis	532			
Lafayette	137			
Lafourche	11			
LaSalle	4			
Lincoln	4			
Livingston	18			
Madison	2			
Morehouse	4			
Natchitoches	16			
Orleans	39			
Ouachita	23			
Plaquemines	6			
Pointe Coupee	43			
Rapides	66			
Sabine	15			
St Bernard	3			
St Charles	12			
St Helena	1			
St James	6			
St John	4			

Fall 2009 Enrollment by State of Origin

<u>State</u>	<u>Enrollment</u>
Alabama	2
Alaska	1
Arizona	3
Arkansas	3
California	7
Colorado	4
Connecticut	1
Florida	8
Georgia	5
Idaho	1
Illinois	3
Indiana	3
Iowa	3
Kansas	2
Louisiana	7,647
Maine	1
Maryland	2
Massachusetts	1
Michigan	4
Minnesota	4
Mississippi	14
Missouri	3
Nevada	1
New Jersey	2
New Mexico	2
New York	3
North Carolina	3
Ohio	3
Oklahoma	11
Oregon	1
Pennsylvania	3
Rhode Island	1
South Carolina	2
Tennessee	3
Texas	391
Virginia	6
Washington	4
Wisconsin	3
Total	8,161
Total Out of State	514
% Out of State of Total Enrollment	5.9%
Number of States (Other than Louisiana)	37

Fall 2009 Enrollment by Foreign Country of Origin

<u>Country</u>	<u>Enrollment</u>		<u>Country</u>	<u>Enrollment</u>
Argentina	1		Taiwan	8
Azerbaijan	2		Thailand	15
Bangladesh	1		Trinidad and Tobago	2
Belgium	1		Turkey	7
Benin	1		Ukraine	2
Bolivia	8		United Kingdom	5
Bulgaria	1		Venezuela	2
Cambodia	2		Vietnam	53
Cameroon	2			
Canada	6		Total Foreign	484
Chile	1		% of Total Enrollment	5.6%
China	58		Number of Countries (Other than USA)	52
Colombia	13			
Croatia	2			
Ecuador	9			
Ethiopia	1			
France	5			
Germany	2			
Ghana	1			
Honduras	4			
India	103			
Indonesia	22			
Ireland	5			
Israel	3			
Jamaica	2			
Kenya	3			
Korea, Republic of	13			
Lithuania	1			
Macedonia	1			
Mexico	8			
Mongolia	1			
Nepal	72			
New Zealand	1			
Nigeria	10			
Pakistan	5			
Panama	1			
Peru	5			
Philippines	3			
Portugal	1			
Romania	2			
Russia	2			
Saudi Arabia	2			
Serbia	1			
South Africa	2			

Fall 2009 Undergraduate Enrollment by Residency

	<u>Part-Time</u>	<u>Full-Time</u>	<u>Total</u>	<u>Percent</u>
Louisiana	1,516	5,262	6,778	89.9%
Out of state	39	419	458	6.1%
Foreign	13	286	299	4.0%
<i>Total</i>	<i>1,568</i>	<i>5,967</i>	<i>7,535</i>	<i>100.0%</i>

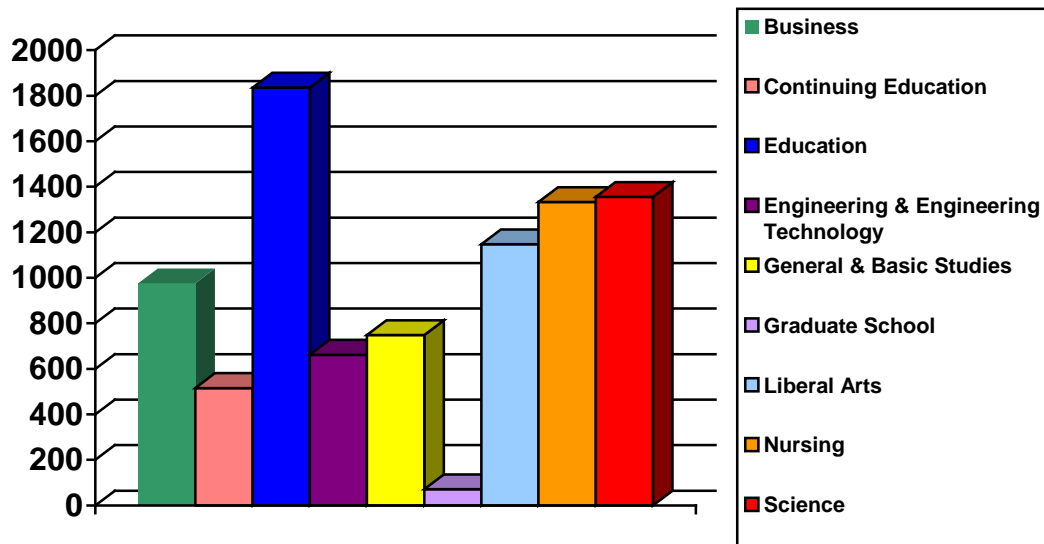
Fall 2009 Graduate Enrollment by Residency

	<u>Part-Time</u>	<u>Full-Time</u>	<u>Total</u>	<u>Percent</u>
Louisiana	614	255	869	78.3%
Out of state	22	34	56	5.0%
Foreign	35	150	185	16.7%
<i>Total</i>	<i>671</i>	<i>439</i>	<i>1,110</i>	<i>100.0%</i>

This Page is Intentionally Left Blank

Fall 2009 Enrollment by College

	<u>Undergraduate</u>	<u>Graduate</u>	<u>Total</u>	<u>Percent</u>
Business	871	105	976	11.3%
Continuing Education	505	11	516	6.0%
Education	1,214	622	1,836	21.2%
Engineering & Engineering Technology	582	80	662	7.6%
General & Basic Studies	749		749	8.7%
Graduate School		71	71	.8%
Liberal Arts	1,113	34	1,147	13.3%
Nursing	1,244	89	1,333	15.4%
Science	1,257	98	1,355	15.7%
Total	7,535	1,110	8,645	100.0%



Historical Fall Undergraduate Enrollment by College

	<u>2005</u>	<u>2006</u>	<u>2007</u>	<u>2008</u>	<u>2009</u>
Business	1,088	1,071	975	1,013	871
Continuing Education*	15	10	12	10	505
Education	1,340	1,218	1,168	1,143	1,214
Engineering & Engineering Technology	515	529	528	579	582
General & Basic Studies*	1,206	1,017	1,010	1,099	749
Liberal Arts	1,216	1,103	1,004	1,037	1,113
Nursing	1,193	1,133	1,139	1,181	1,244
Science	1,274	1,255	1,217	1,220	1,257
Total	7,847	7,336	7,053	7,282	7,535

* In Fall 2009, Early Admissions was moved from General & Basic Studies to Continuing Education.

Historical Fall Graduate Enrollment by College

	<u>2005</u>	<u>2006</u>	<u>2007</u>	<u>2008</u>	<u>2009</u>
Business	73	74	80	99	105
Continuing Education	18	16	20	12	11
Education	640	570	576	567	622
Engineering & Engineering Technology	84	78	100	71	80
Graduate School	154	96	54	77	71
Liberal Arts	37	34	34	38	34
Nursing	66	58	82	88	89
Science	73	81	96	60	98
Total	1,145	1,007	1,042	1,012	1,110

Fall 2009 Enrollment by College and Department

<u>College</u>	<u>Department Name</u>	<u>Undergraduate</u>	<u>Graduate</u>	<u>Total</u>
Business	Accounting, Fin, & Economics	342		342
	Mgmt, Marketing and Gen Bus	529	105	634
<i>College of Business Total</i>		871	105	976
Continuing Education	Continuing Education	505	11	516
<i>Continuing Education Total</i>		505	11	516
Education	Educ Leadership & Instr Tech	29	124	153
	Health & Human Performance	418	46	464
	Psychology	241	64	305
	Teacher Education	526	388	914
<i>College of Education Total</i>		1,214	622	1,836
Engineering & Engineering Technology	Engineering	430	80	510
	Engineering Technology	152		152
<i>College of Engineering & Engineering Technology Total</i>		582	80	662
General & Basic Studies	Basic Studies	749		749
<i>General & Basic Studies Total</i>		749		749
Graduate School	Graduate School		71	71
<i>Graduate School Total</i>			71	71
Liberal Arts	English & Foreign Languages	134	30	164
	History	150		150
	Mass Communication	164		164
	Performing Arts	120	4	124
	Social Sciences	367		367
	Visual Arts	178		178
<i>College of Liberal Arts Total</i>		1,113	34	1,147
Nursing	Graduate Nursing		89	89
	Undergraduate Nursing	1,244		1,244
<i>College of Nursing Total</i>		1,244	89	1,333
Science	Agriculture	305	25	330
	Biology & Health Sciences	532		532
	Chemistry	111	18	129
	Math, Computer Science, & Stat	180	55	235
	Nutrition and Family Studies	110		110
	Physics	19		19
<i>College of Science Total</i>		1,257	98	1,355
University Total		7,535	1,110	8,645

Historical Fall Undergraduate Enrollment by College and Department

<u>College</u>	<u>Department Name</u>	<u>2005</u>	<u>2006</u>	<u>2007</u>	<u>2008</u>	<u>2009</u>
Business	Accounting, Fin, & Economics	376	370	335	349	342
	Mgmt, Marketing and Gen Bus	712	701	640	664	529
<i>College of Business Total</i>		<i>1,088</i>	<i>1,071</i>	<i>975</i>	<i>1,013</i>	<i>871</i>
Continuing Education	Continuing Education	15	10	12	10	505
<i>Continuing Education Total</i>		<i>15</i>	<i>10</i>	<i>12</i>	<i>10</i>	<i>505</i>
Education	Educ Leadership & Instr Tech	20	21	20	20	29
	Health & Human Performance	396	368	381	394	418
	Psychology	257	233	244	238	241
	Teacher Education	667	596	523	491	526
<i>College of Education Total</i>		<i>1,340</i>	<i>1,218</i>	<i>1,168</i>	<i>1,143</i>	<i>1,214</i>
Engineering & Engineering Technology	Engineering	353	361	372	409	430
	Engineering Technology	162	168	156	170	152
<i>College of Engineering & Engineering Technology Total</i>		<i>515</i>	<i>529</i>	<i>528</i>	<i>579</i>	<i>582</i>
General & Basic Studies	Basic Studies	1,206	1,017	1,010	1,099	749
<i>Gen & Basic Studies Total</i>		<i>1,206</i>	<i>1,017</i>	<i>1,010</i>	<i>1,099</i>	<i>749</i>
Liberal Arts	English & Foreign Languages	138	135	131	141	134
	History	152	129	132	129	150
	Mass Communication	209	186	154	164	164
	Performing Arts	115	110	99	104	120
	Social Sciences	431	369	317	327	367
	Visual Arts	171	174	171	172	178
<i>College of Liberal Arts Total</i>		<i>1,216</i>	<i>1,103</i>	<i>1,004</i>	<i>1,037</i>	<i>1,113</i>
Nursing	Undergraduate Nursing	1,193	1,133	1,139	1,181	1,244
<i>College of Nursing Total</i>		<i>1,193</i>	<i>1,133</i>	<i>1,139</i>	<i>1,181</i>	<i>1,244</i>
Science	Agriculture*	211	214	225	236	305
	Biological & Envr Sciences*	589	619	608	600	
	Biology & Health Sciences*					532
	Chemistry	106	102	91	108	111
	Math, Computer Science, & Stat	188	164	165	170	180
	Nutrition and Family Studies	171	145	118	97	110
	Physics	9	11	10	9	19
<i>College of Science Total</i>		<i>1,274</i>	<i>1,255</i>	<i>1,217</i>	<i>1,220</i>	<i>1,257</i>
University Total		7,847	7,336	7,053	7,282	7,535

*In Fall 2009 Environmental Science enrollment was moved from Biological & Environmental Sciences to Agriculture.

Historical Fall Graduate Enrollment by College and Department

College	Department Name	2005	2006	2007	2008	2009
Business	Mgmt, Marketing and Gen Bus	73	74	80	99	105
College of Business Total		73	74	80	99	105
Continuing Education	Continuing Education	18	16	20	12	11
Continuing Education Total		18	16	20	12	11
Education	Educ Leadership & Instr Tech	203	138	117	115	124
	Health & Human Performance	28	26	26	39	46
	Psychology	75	53	67	63	64
	Teacher Education	334	353	366	350	388
College of Education Total		640	570	576	567	622
Engineering & Engineering Tech	Engineering	84	78	100	71	80
College of Engineering & Engineering Technology Total		84	78	100	71	80
Graduate School	Graduate School	154	96	54	77	71
Graduate School Total		154	96	54	77	71
Liberal Arts	English & Foreign Languages	36	28	28	33	30
	Performing Arts	1	6	6	5	4
College of Liberal Arts Total		37	34	34	38	34
Nursing	Graduate Nursing	66	58	82	88	89
College of Nursing Total		66	58	82	88	89
Science	Agriculture*	3	7	8	11	25
	Biological & Envr Sciences*	14	9	7	9	
	Chemistry	18	19	11	14	18
	Math, Computer Science, & Stat	30	38	62	26	55
	Nutrition and Family Studies	8	8	8		
College of Science Total		73	81	96	60	98
University Total		1,145	1,007	1,042	1,012	1,110

*In Fall 2009 Environmental Science enrollment was moved from Biological & Environmental Sciences to Agriculture.

Fall 2009 Enrollment by Department and Major

<u>College/Department</u>	<u>Major</u>	<u>Undergraduate</u>	<u>Graduate</u>	<u>Total</u>
Business				
Accounting, Fin & Economics	Accounting	254		254
	Finance	87		87
	Undeclared	1		1
<i>Department Total</i>		<i>342</i>		<i>342</i>
Mgmt, Marketing, & Gen Bus	Business Administration		105	105
	Gen Business Administration	196		
	Management	198		
	Marketing	130		
	Undeclared	5		
<i>Department Total</i>		<i>529</i>	<i>105</i>	<i>634</i>
<i>College of Business Total</i>		<i>871</i>	<i>105</i>	<i>976</i>
Continuing Education				
Continuing Education	EASE Program	19	11	30
	Undeclared	486		486
<i>Department Total</i>		<i>505</i>	<i>11</i>	<i>516</i>
<i>Continuing Education Total</i>		<i>505</i>	<i>11</i>	<i>516</i>
Education				
Educ Leadership & Instr Tech	Business Education – Grades 6-12	29		29
	Educational Leadership		76	76
	Educational Technology Leadership		23	23
	Instructional Technology		25	25
<i>Department Total</i>		<i>29</i>	<i>124</i>	<i>153</i>
Health & Human Performance	Athletic Training	46		46
	Health & Human Performance		46	46
	Health & Human Performance, Education	8		8
	Health & Human Performance, General	211		211
	Health & Physical Education, Gr K-12	152		152
	Undeclared	1		1
<i>Department Total</i>		<i>418</i>	<i>46</i>	<i>464</i>
Psychology	Psychology	241	64	305
<i>Department Total</i>		<i>241</i>	<i>64</i>	<i>305</i>

Fall 2009 Enrollment by Department and Major (continued)

<u>College/Department</u>	<u>Major</u>	<u>Undergraduate</u>	<u>Graduate</u>	<u>Total</u>
Teacher Education	Add-on Teacher Certification		19	19
	Alt Certification – Grades 1-12 Mild/Moderate Sp Ed		25	25
	Alt Certification – Grades K-12 Health & Physical Ed		11	11
	Alt Certification – Grades 1-5		52	52
	Alt Certification – Grade 6-12		38	38
	Alt Certification – K-12 Art Ed		4	4
	Alt Certification – Grades PK-3		25	25
	Curriculum and Instruction		13	13
	Early Childhood Education	1		1
	Early Childhood Educ – Grades PK- 3	252		252
	Elementary Education	1		1
	Elementary Education – Grades 1–5	247	64	311
	School Counseling		27	27
	Secondary Education Grades 6-12		81	81
	Special Education, Mild/Mod Gr 1-12		25	25
	Special Education		4	4
	Special Education, General	24		24
	Undeclared	1		1
<i>Department Total</i>		526	388	914
College of Education Total		1,214	622	1,836
Engineering & Engineering Technology				
Engineering	Engineering	430	80	510
<i>Department Total</i>		430	80	510
Engineering Technology	Engineering Technology	151		151
	Undeclared	1		1
<i>Department Total</i>		152		152
College of Engineering & Engineering Technology Total		582	80	662
General & Basic Studies				
Basic Studies	Basic Studies	228		228
	General Studies	521		521
<i>Department Total</i>		749		749
General & Basic Studies Total		749		749

Fall 2009 Enrollment by Department and Major (continued)

<u>College/Department</u>	<u>Major</u>	<u>Undergraduate</u>	<u>Graduate</u>	<u>Total</u>
Graduate School				
Graduate School	Non-degree		71	71
<i>Department Total</i>			<i>71</i>	<i>71</i>
Graduate School Total			71	71
Liberal Arts				
English & Foreign Languages	Creative Writing		20	20
	English	60	10	70
	English Education Grades 6 – 12	54		54
	Foreign Language Education Gr 6-12	10		10
	French	2		2
	Spanish	8		8
<i>Department Total</i>		<i>134</i>	<i>30</i>	<i>164</i>
History	History	58		58
	Liberal Studies	29		29
	Social Studies Education Gr 6 – 12	63		63
<i>Department Total</i>		<i>150</i>		<i>150</i>
Mass Communication	Communication Studies	1		1
	Mass Communication	154		154
	Speech	5		5
	Speech Education Grades 6-12	4		4
<i>Department Total</i>		<i>164</i>		<i>164</i>
Performing Arts	Music Education	3	4	7
	Music Educ-Instrumental, Gr K-12	62		62
	Music Education – Vocal, Gr 6 – 12	20		20
	Music Performance	21		21
	Theatre Arts	14		14
<i>Department Total</i>		<i>120</i>	<i>4</i>	<i>124</i>
Social Sciences	Criminal Justice	218		218
	General Studies	3		3
	Government	39		39
	Paralegal Studies	32		32
	Sociology	74		74
	Undeclared	1		1
<i>Department Total</i>		<i>367</i>		<i>367</i>

Fall 2009 Enrollment by Department and Major (continued)

<u>College/Department</u>	<u>Major</u>	<u>Undergraduate</u>	<u>Graduate</u>	<u>Total</u>
Visual Arts	Art	141		141
	Art Education	4		4
	Art Education – Grades K – 12	31		31
	General Studies	2		2
<i>Department Total</i>		<i>178</i>		<i>178</i>
College of Liberal Arts Total		1,113	34	1,147
Nursing				
Graduate Nursing	Nursing		89	89
<i>Department Total</i>			<i>89</i>	<i>89</i>
Undergraduate Nursing	Nursing	1,244		1,244
	Undeclared			
<i>Department Total</i>		<i>1,244</i>		<i>1,244</i>
College of Nursing Total		1,244	89	1,333
Science				
Agriculture	Agricultural Education – Grs 6 – 12	21		21
	Agricultural Sciences	213		213
	Environmental & Chemical Sciences		25	25
	Environmental Science	29		29
	Environmental Science Education Grades 6-12	3		3
	Undeclared	1		1
	Wildlife Management	38		38
<i>Department Total</i>		<i>305</i>	<i>25</i>	<i>330</i>
Biology & Health Sciences	Biological Science	257		257
	Biology Education – Grades 6 – 12	18		18
	Clinical Laboratory Science	61		61
	Radiologic Technology	196		196
<i>Department Total</i>		<i>532</i>		<i>532</i>
Chemistry	Chemistry	107		107
	Chemistry Education – Grades 6-12	4		4
	Environmental & Chemical Sciences		18	18
<i>Department Total</i>		<i>111</i>	<i>18</i>	<i>129</i>

Fall 2009 Enrollment by Department and Major (continued)

<u>College/Department</u>	<u>Major</u>	<u>Undergraduate</u>	<u>Graduate</u>	<u>Total</u>
Math, Computer Sci and Stat	Computer Information Tech	25		25
	Computer Science	93		93
	Mathematical Sciences		55	55
	Mathematics	26		26
	Mathematics Education – Grades 6-12	35		35
	Undeclared	1		1
<i>Department Total</i>		<i>180</i>	<i>55</i>	<i>235</i>
Nutrition & Family Studies	Family & Consumer Sciences	87		87
	Family & Consumer Sciences Education Grades 6-12	2		2
	Family & Consumer Sciences Online	18		18
	General Studies	3		3
<i>Department Total</i>		<i>110</i>		<i>110</i>
Physics	Physics	19		19
<i>Department Total</i>		<i>19</i>		<i>19</i>
<i>College of Science Total</i>		<i>1,257</i>	<i>98</i>	<i>1,355</i>
University Total		7,535	1,110	8,645

Undergraduates taking developmental classes	666	8.8%
---	-----	------

Historical Fall Enrollment Data Since 1939

<u>Fall</u>	<u>Under-graduate</u>	<u>Graduate</u>	<u>Total</u>		<u>Fall</u>	<u>Under-graduate</u>	<u>Graduate</u>	<u>Total</u>
2009	7,535	1,110	8,645		1973	4,922	915	5,837
2008	7,282	1,012	8,294		1972	5,226	959	6,185
2007	7,053	1,042	8,095		1971	5,067	958	6,025
2006	7,336	1,007	8,343		1970	4,844	750	5,594
2005	7,847	1,145	8,992		1969	4,568	582	5,150
2004	7,724	1,060	8,784		1968	4,618	472	5,090
2003	7,330	1,117	8,447		1967	4,234	308	4,542
2002	7,010	1,019	8,029		1966	3,983	333	4,316
2001	6,845	935	7,780		1965	3,512	295	3,807
2000	6,731	901	7,632		1964	3,149	211	3,360
1999	6,865	1,014	7,879		1963	2,663	164	2,827
1998	6,978	1,017	7,995		1962	2,999	132	3,131
1997	7,050	1,087	8,137		1961	2,848	98	2,946
1996	7,063	1,024	8,087		1960	2,697		2,697
1995	7,381	1,063	8,444		1959	2,502		2,502
1994	7,658	1,071	8,729		1958	2,444		2,444
1993	7,347	1,057	8,404		1957	2,024		2,024
1992	7,316	1,158	8,474		1956	1,916		1,916
1991	6,818	1,013	7,831		1955	1,661		1,661
1990	6,662	1,062	7,724		1954	1,367		1,367
1989	6,557	1,022	7,579		1953	1,192		1,192
1988	6,383	1,040	7,423		1952	993		993
1987	6,457	1,036	7,493		1951	905		905
1986	6,430	950	7,380		1950	501		501
1985	6,650	1,174	7,824		1949	397		397
1984	6,645	1,336	7,981		1948	575		575
1983	6,491	1,535	8,026		1947	615		615
1982	5,888	1,463	7,351		1946	640		640
1981	5,461	1,556	7,017		1945	233		233
1980	4,700	691	5,391		1944	131		131
1979	4,435	721	5,156		1943	146		146
1978	4,626	750	5,376		1942	169		169
1977	4,883	642	5,525		1941	223		223
1976	5,048	758	5,806		1940	242		242
1975	5,058	955	6,013		1939	254		254
1974	4,841	845	5,686					

This Page is Intentionally Left Blank

First-Time Freshmen

Fall 2009 First-Time Freshmen by Full-Time/Part-Time Status

	<u>Total</u>	<u>Percent</u>
Full-Time	1,225	93.0%
Part-Time	92	7.0%
<i>Total</i>	<i>1,317</i>	<i>100.0%</i>

Fall 2009 First-Time Freshmen by Gender

	<u>Full-Time</u>	<u>Part-Time</u>	<u>Total</u>	<u>Percent</u>
Female	728	56	784	59.5%
Male	497	36	533	40.5%
<i>Total</i>	<i>1,225</i>	<i>92</i>	<i>1,317</i>	<i>100.0%</i>

Fall 2009 First-Time Freshmen by Ethnicity

	<u>Full-Time</u>	<u>Part-Time</u>	<u>Total</u>	<u>Percent</u>
Amer Indian/Alaska Native	11	1	12	.9%
Asian/Pacific Islander	11	3	14	1.1%
Black	218	32	250	19.0%
Foreign	31		31	2.3%
Hispanic	19	1	20	1.5%
White	929	53	982	74.6%
Race/Ethnicity Unknown	6	2	8	.6%
<i>Total</i>	<i>1,225</i>	<i>92</i>	<i>1,317</i>	<i>100.0%</i>

Fall 2009 First-Time Freshmen Admissions

	<u>Total</u>
Applied	2,904
Accepted	1,946
Enrolled Full-Time	1,225
Enrolled Part-Time	92

ACT Class Profile

First-Time Full-Time Degree Seeking Freshman

	<u>Avg ACT</u>
Fall 2009	21.3
Fall 2008	20.6

Fall 2009 First-Time Freshmen by Parish of Origin

Parish	Enrollment	Parish	Enrollment
Acadia	30		
Allen	54	Total Louisiana	1,185
Ascension	6	% of Total FTF	90.0%
Assumption	2	Number of Parishes	43
Avoyelles	1		
Beauregard	89		
Bossier	3	Five Parish Total	951
Caddo	6	% of Total FTF	72.2%
Calcasieu	674		
Cameron	42		
DeSoto	1		
East Baton Rouge	12		
Evangeline	11		
Grant	3		
Iberia	14		
Iberville	2		
Jefferson	5		
Jefferson Davis	92		
Lafayette	23		
Lafourche	1		
Livingston	4		
Morehouse	2		
Natchitoches	2		
Orleans	3		
Ouachita	3		
Pointe Coupee	1		
Rapides	11		
Sabine	3		
St Bernard	1		
St Charles	3		
St James	1		
St John	1		
St Landry	13		
St Martin	5		
St Mary	4		
St Tammany	2		
Tangipahoa	1		
Vermilion	15		
Vernon	32		
Washington	3		
Webster	1		
West Carroll	1		
West Feliciana	2		

Fall 2009 First-Time Freshmen by State of Origin

<u>State</u>	<u>Enrollment</u>
Arizona	1
Arkansas	1
California	2
Georgia	1
Iowa	1
Louisiana	1,186
Mississippi	2
Nevada	1
New Mexico	1
New York	1
South Carolina	1
Texas	84
Washington	1
Wisconsin	1
Total	1,284
Total Out of State	98
% of Total FTF	7.4%
Number of States (Other than Louisiana)	13

Fall 2009 First-Time Freshmen by Foreign Country of Origin

<u>Country</u>	<u>Enrollment</u>
Bolivia	1
Canada	1
China	5
Colombia	1
Indonesia	1
Ireland	1
Nepal	7
Nigeria	2
Pakistan	1
Thailand	3
Ukraine	1
United Kingdom	1
Vietnam	9
Total Foreign	34
% of Total FTF	2.6%
Number of Countries (Other than USA)	13

Fall 2009 First-Time Freshmen by Residency

	<u>Full-Time</u>	<u>Part-Time</u>	<u>Total</u>	<u>Percent</u>
Louisiana	1,100	85	1,185	90.0%
Out of state	92	6	98	7.4%
Foreign	33	1	34	2.6%
Total	1,225	92	1,317	100.0%

Fall 2009 First-Time Freshmen Enrollment by College

	<u>Full-Time</u>	<u>Part-Time</u>	<u>Total</u>	<u>Percent</u>
Business	99	5	104	7.9%
Education	190	5	195	14.8%
Engineering & Engineering Technology	113	1	114	8.7%
General & Basic Studies	158	59	217	16.5%
Liberal Arts	162	11	173	13.1%
Nursing	204	6	210	15.9%
Science	299	5	304	23.1%
<i>Total</i>	<i>1,225</i>	<i>92</i>	<i>1,317</i>	<i>100.0%</i>

Historical Fall First-Time Freshmen Enrollment by College

	<u>2005</u>	<u>2006</u>	<u>2007</u>	<u>2008</u>	<u>2009</u>
Business	108	134	125	150	104
Continuing Education		3	3		
Education	172	164	167	192	195
Engineering & Engineering Technology	111	105	125	116	114
General & Basic Studies	337	272	251	187	217
Liberal Arts	147	153	139	181	173
Nursing	213	212	212	197	210
Science	281	276	279	319	304
<i>Total</i>	<i>1,369</i>	<i>1,319</i>	<i>1,301</i>	<i>1,342</i>	<i>1,317</i>

Fall 2009 First-Time Freshmen by College and Department

<u>College</u>	<u>Department</u>	<u>Full-Time</u>	<u>Part-Time</u>	<u>Total</u>
Business	Accounting, Fin & Economics	27	1	28
	Mgmt, Marketing, & Gen Bus	72	4	76
<i>College of Business Total</i>		99	5	104
Education	Educ Leadership & Instr Tech	2		2
	Health & Human Performance	70	2	72
	Psychology	54		54
	Teacher Education	64	3	67
<i>College of Education Total</i>		190	5	195
Engineering & Engineering Technology	Engineering	99	1	100
	Engineering Technology	14		14
<i>College of Engineering & Engineering Technology Total</i>		113	1	114
General & Basic Studies	Basic Studies	158	59	217
<i>General & Basic Studies Total</i>		158	59	217
Liberal Arts	English & Foreign Languages	24	2	26
	History	15	2	17
	Mass Communication	21		21
	Performing Arts	35		35
	Social Sciences	45	6	51
	Visual Arts	22	1	23
<i>College of Liberal Arts Total</i>		162	11	173
Nursing	Undergraduate Nursing	204	6	210
<i>College of Nursing Total</i>		204	6	210
Science	Agriculture	78		78
	Biology & Health Sciences	145	2	147
	Chemistry	34		34
	Math, Computer Sci and Stat	26	1	27
	Nutrition & Family Studies	10	2	12
	Physics	6		6
<i>College of Science Total</i>		299	5	304
University Total		1,225	92	1,317

Historical First-Time Freshmen Enrollment by College and Department

<u>College</u>	<u>Department Name</u>	<u>2005</u>	<u>2006</u>	<u>2007</u>	<u>2008</u>	<u>2009</u>
Business	Accounting, Fin, & Economics	32	39	46	42	28
	Mgmt, Marketing and Gen Bus	76	95	79	108	76
<i>College of Business Total</i>		108	134	125	150	104
Continuing Education	Continuing Education		3	3		
<i>Continuing Education Total</i>			3	3		
Education	Educ Leadership & Instr Tech	1	1	1	3	2
	Health & Human Performance	59	51	64	86	72
	Psychology	39	52	48	41	54
	Teacher Education	73	60	54	62	67
<i>College of Education Total</i>		172	164	167	192	195
Engineering & Engineering Technology	Engineering	92	85	100	92	100
	Engineering Technology	19	20	25	24	14
<i>College of Engineering & Engineering Technology Total</i>		111	105	125	116	114
General & Basic Studies	Basic Studies	337	272	251	187	217
<i>General & Basic Studies Total</i>		337	272	251	187	217
Liberal Arts	English & Foreign Languages	22	18	22	23	26
	History	13	16	13	11	17
	Mass Communication	26	28	17	35	21
	Performing Arts	21	26	22	38	35
	Social Sciences	47	42	37	54	51
	Visual Arts	18	23	28	20	23
<i>College of Liberal Arts Total</i>		147	153	139	181	173
Nursing	Undergraduate Nursing	213	212	212	197	210
<i>College of Nursing Total</i>		213	212	212	197	210
Science	Agriculture*	42	36	42	69	78
	Biological & Envr Sciences*	150	168	162	159	
	Biology & Health Sciences*					147
	Chemistry	29	16	28	39	34
	Math, Computer Science, & Stat	38	36	43	35	27
	Nutrition & Family Studies	20	15	4	13	12
	Physics	2	5		4	6
<i>College of Science Total</i>		281	276	279	319	304
University Total		1,369	1,319	1,301	1,342	1,317

*In Spring 2009 Environmental Science was moved from Biological & Environmental Sciences to Agriculture.

Fall 2009 First-Time Freshmen by Department and Major

<u>College/Department</u>	<u>Major</u>	<u>Full-Time</u>	<u>Part-Time</u>	<u>Total</u>
Business				
Accounting, Fin & Economics	Accounting	21	1	22
	Finance	6		6
<i>Department Total</i>		<i>27</i>	<i>1</i>	<i>28</i>
Mgmt, Marketing, & Gen Bus	Gen Business Administration	34	2	36
	Management	20	2	22
	Marketing	18		18
<i>Department Total</i>		<i>72</i>	<i>4</i>	<i>76</i>
College of Business Total		99	5	104
Education				
Educ Leadership & Instr Tech	Business Education – Grades 6-12	2		2
<i>Department Total</i>		<i>2</i>		<i>2</i>
Health & Human Performance	Athletic Training	9		9
	Health & Human Performance, General	45	1	46
	Health & Physical Education, Grades K–12	16	1	17
<i>Department Total</i>		<i>70</i>	<i>2</i>	<i>72</i>
Psychology	Psychology	54		54
<i>Department Total</i>		<i>54</i>		<i>54</i>
Teacher Education	Early Childhood Education–Grades PK–3	29	2	31
	Elementary Education – Grades 1–5	32	1	33
	Special Education, General	3		3
<i>Department Total</i>		<i>64</i>	<i>3</i>	<i>67</i>
College of Education Total		190	5	195
Engineering & Engineering Technology				
Engineering	Engineering	99	1	100
<i>Department Total</i>		<i>99</i>	<i>1</i>	<i>100</i>
Engineering Technology	Engineering Technology	14		14
<i>Department Total</i>		<i>14</i>		<i>14</i>
College of Engineering & Engineering Technology Total		113	1	114

Fall 2009 First-Time Freshmen by Department and Major (continued)

<u>College/Department</u>	<u>Major</u>	<u>Full-Time</u>	<u>Part-Time</u>	<u>Total</u>
General & Basic Studies				
Basic Studies	Basic Studies	146	57	203
	General Studies	12	2	14
<i>Department Total</i>		<i>158</i>	<i>59</i>	<i>217</i>
General & Basic Studies Total		158	59	217
Liberal Arts				
English & Foreign Languages	English	9		9
	English Education Grades 6 – 12	12	1	13
	Foreign Language Ed Grds 6-12	2	1	3
	Spanish	1		1
<i>Department Total</i>		<i>24</i>	<i>2</i>	<i>26</i>
History	History	6	1	7
	Liberal Studies	2		2
	Social Studies Education Grades 6 – 12	7	1	8
<i>Department Total</i>		<i>15</i>	<i>2</i>	<i>17</i>
Mass Communication	Mass Communication	20		20
	Speech Education Grades 6-12	1		1
<i>Department Total</i>		<i>21</i>		<i>21</i>
Performing Arts	Music Educ–Instrumental Grades K–12	25		25
	Music Education – Vocal Grades 6 – 12	5		5
	Music Performance	4		4
	Theatre Arts	1		1
<i>Department Total</i>		<i>35</i>		<i>35</i>
Social Sciences	Criminal Justice	30	2	32
	General Studies	1		1
	Government	7		7
	Paralegal Studies	1	2	3
	Sociology	6	2	8
<i>Department Total</i>		<i>45</i>	<i>6</i>	<i>51</i>
Visual Arts	Art	18	1	19
	Art Education – Grades K – 12	4		4
<i>Department Total</i>		<i>22</i>	<i>1</i>	<i>23</i>
College of Liberal Arts Total		162	11	173

Fall 2009 First-Time Freshmen by Department and Major (continued)

<u>College/Department</u>	<u>Major</u>	<u>Full-Time</u>	<u>Part-Time</u>	<u>Total</u>
Nursing				
Undergraduate Nursing	Nursing	204	6	210
<i>Department Total</i>		<i>204</i>	<i>6</i>	<i>210</i>
College of Nursing Total		204	6	210
Science				
Agriculture	Agricultural Education, Grades 6 – 12	6		6
	Agricultural Sciences	72		72
<i>Department Total</i>		<i>78</i>		<i>78</i>
Biology & Health Sciences	Biological Science	87	1	88
	Biology Education – Grades 6 – 12	2		2
	Clinical Laboratory Science	4		4
	Radiologic Technology	52	1	53
<i>Department Total</i>		<i>145</i>	<i>2</i>	<i>147</i>
Chemistry	Chemistry	32		32
	Chemistry Education, Grades 6 – 12	2		2
<i>Department Total</i>		<i>34</i>		<i>34</i>
Math, Computer Sci and Stat	Computer Information Tech	1	1	2
	Computer Science	18		18
	Mathematics	2		2
	Mathematics Education – Grades 6-12	5		5
<i>Department Total</i>		<i>26</i>	<i>1</i>	<i>27</i>
Nutrition & Family Studies	Family & Consumer Sciences	9	1	10
	Family & Consumer Sciences Online	1	1	2
<i>Department Total</i>		<i>10</i>	<i>2</i>	<i>12</i>
Physics	Physics	6		6
<i>Department Total</i>		<i>6</i>		<i>6</i>
College of Science Total		299	5	304
University Total		1,225	92	1,317

Transfers

Fall 2009 Transfer Enrollment by Full-Time/Part-Time Status

	<u>Undergraduate</u>	<u>Graduate</u>	<u>Total</u>	<u>Percent</u>
Full-Time	344	18	362	78.0%
Part-Time	78	24	102	22.0%
Total	422	42	464	100.0%

Fall 2009 Undergraduate Transfer Enrollment by College

	<u>Full-Time</u>	<u>Part-Time</u>	<u>Total</u>	<u>Percent</u>
Business	36	7	43	10.2%
Education	54	11	65	15.4%
Engineering & Engineering Technology	32	7	39	9.3%
General & Basic Studies	43	9	52	12.3%
Liberal Arts	63	10	73	17.3%
Nursing	73	22	95	22.5%
Science	43	12	55	13.0%
Total	344	78	422	100.0%

Historical Fall Undergraduate Transfer Enrollment by College

	<u>2005</u>	<u>2006</u>	<u>2007</u>	<u>2008</u>	<u>2009</u>
Business	50	45	56	48	43
Education	57	51	42	56	65
Engineering & Engineering Technology	18	27	20	28	39
General & Basic Studies	37	32	23	39	52
Liberal Arts	47	40	36	40	73
Nursing	74	64	72	78	95
Science	55	62	74	61	55
Total	338	321	323	350	422

Fall 2009 Undergraduate Transfers by College and Department

<u>College</u>	<u>Department</u>	<u>Full-Time</u>	<u>Part-Time</u>	<u>Total</u>
Business	Accounting, Fin & Economics	17	1	18
	Mgmt, Marketing, & Gen Bus	19	6	25
<i>College of Business Total</i>		36	7	43
Education	Educ Leadership & Instr Tech		1	1
	Health & Human Performance	16	2	18
	Psychology	14	1	15
	Teacher Education	24	7	31
<i>College of Education Total</i>		54	11	65
Engineering & Engineering Technology	Engineering	28	5	33
	Engineering Technology	4	2	6
<i>College of Engineering & Engineering Technology Total</i>		32	7	39
General & Basic Studies	Basic Studies	43	9	52
<i>General & Basic Studies Total</i>		43	9	52
Liberal Arts	English & Foreign Languages	9		9
	History	8	2	10
	Mass Communication	11	2	13
	Performing Arts	9	1	10
	Social Sciences	23	2	25
	Visual Arts	3	3	6
<i>College of Liberal Arts Total</i>		63	10	73
Nursing	Undergraduate Nursing	73	22	95
<i>College of Nursing Total</i>		73	22	95
Science	Agriculture	10	1	11
	Biology & Health Sciences	18	5	23
	Chemistry	2	1	3
	Math, Computer Sci and Stat	9	4	13
	Nutrition & Family Studies	4	1	5
<i>College of Science Total</i>		43	12	55
University Total		344	78	422

Fall 2009 Undergraduate Transfers by Department and Major

<u>College/Department</u>	<u>Major</u>	<u>Full-Time</u>	<u>Part-Time</u>	<u>Total</u>
Business				
Accounting, Fin & Economics	Accounting	10		10
	Finance	7	1	8
<i>Department Total</i>		<i>17</i>	<i>1</i>	<i>18</i>
Mgmt, Marketing, & Gen Bus	Gen Business Administration	6	4	10
	Management	9	1	10
	Marketing	4	1	5
<i>Department Total</i>		<i>19</i>	<i>6</i>	<i>25</i>
College of Business Total		36	7	43
Education				
Educ Leadership & Instr Tech	Business Education – Grades 6-12		1	1
<i>Department Total</i>			<i>1</i>	<i>1</i>
Health & Human Performance	Athletic Training	1		1
	Health & Human Performance, General	11		11
	Health & Physical Education, Grades K–12	4	2	6
<i>Department Total</i>		<i>16</i>	<i>2</i>	<i>18</i>
Psychology	Psychology	14	1	15
<i>Department Total</i>		<i>14</i>	<i>1</i>	<i>15</i>
Teacher Education	Early Childhood Education–Grades PK–3	9	3	12
	Elementary Education – Grades 1–5	13	3	16
	Special Education, General	2	1	3
<i>Department Total</i>		<i>24</i>	<i>7</i>	<i>31</i>
College of Education Total		54	11	65
Engineering & Engineering Technology				
Engineering	Engineering	28	5	33
<i>Department Total</i>		<i>28</i>	<i>5</i>	<i>33</i>
Engineering Technology	Engineering Technology	4	2	6
<i>Department Total</i>		<i>4</i>	<i>2</i>	<i>6</i>
College of Engineering & Engineering Technology Total		32	7	39

Fall 2009 Undergraduate Transfers by Department and Major (continued)

<u>College/Department</u>	<u>Major</u>	<u>Full-Time</u>	<u>Part-Time</u>	<u>Total</u>
General & Basic Studies				
Basic Studies	Basic Studies	1	3	4
	General Studies	42	6	48
<i>Department Total</i>		43	9	52
General & Basic Studies Total		43	9	52
Liberal Arts				
English & Foreign Languages	English	9		9
<i>Department Total</i>		9		9
History	History	6	1	7
	Liberal Studies	1		1
	Social Studies Education Grades 6 – 12	1	1	2
<i>Department Total</i>		8	2	10
Mass Communication	Mass Communication	11	2	13
<i>Department Total</i>		11	2	13
Performing Arts	Music Educ–Instrumental Grades K–12	1		1
	Music Educ–Vocal Grades K–12	1		1
	Music Performance	3		3
	Theatre Arts	4	1	5
<i>Department Total</i>		9	1	10
Social Sciences	Criminal Justice	16	1	17
	Government	2	1	3
	Paralegal Studies	1		1
	Sociology	4		4
<i>Department Total</i>		23	2	25
Visual Arts	Art	3	3	6
<i>Department Total</i>		3	3	6
College of Liberal Arts Total		63	10	73
Nursing				
Undergraduate Nursing	Nursing	73	22	95
<i>Department Total</i>		73	22	95
College of Nursing Total		73	22	95

Fall 2009 Undergraduate Transfers by Department and Major (continued)

<u>College/Department</u>	<u>Major</u>	<u>Full-Time</u>	<u>Part-Time</u>	<u>Total</u>
Science				
Agriculture	Agricultural Sciences	10	1	11
<i>Department Total</i>		<i>10</i>	<i>1</i>	<i>11</i>
Biology & Health Sciences	Biological Science	7	1	8
	Clinical Laboratory Science	1	1	2
	Radiologic Technology	10	3	13
<i>Department Total</i>		<i>18</i>	<i>5</i>	<i>23</i>
Chemistry	Chemistry	1	1	2
	Chemistry Education – Grades 6-12	1		1
<i>Department Total</i>		<i>2</i>	<i>1</i>	<i>3</i>
Math, Computer Sci and Stat	Computer Information Technology	1		1
	Computer Science	4	3	7
	Mathematics	3	1	4
	Mathematics Education – Grades 6-12	1		1
<i>Department Total</i>		<i>9</i>	<i>4</i>	<i>13</i>
Nutrition & Family Studies	Family & Consumer Sciences	3		3
	Family & Consumer Sciences Education Grades 6-12	1		1
	Family & Consumer Sciences Online		1	1
<i>Department Total</i>		<i>4</i>	<i>1</i>	<i>5</i>
<i>College of Science Total</i>		<i>43</i>	<i>12</i>	<i>55</i>
University Total		344	78	422

This Page is Intentionally Left Blank

Spring Enrollment Spring 2010

Spring 2010 Enrollment by Level

	<u>Enrollment</u>	<u>Percent</u>
Undergraduate	6,978	86.2%
Graduate	1,121	13.8%
Total	8,099	100.0%

Spring 2010 Full-Time Equivalent Enrollment by Level

	<u>Enrollment</u>	<u>Percent</u>
Undergraduate (12 hours)	7,951.7	90.2%
Graduate (9 hours)	861.1	9.8%
Total	8,812.8	100.0%

Spring 2010 Enrollment by Rank

	<u>Enrollment</u>	<u>Percent</u>
Early Admissions	422	5.2%
Freshman	1,968	24.3%
Sophomore	1,312	16.2%
Junior	1,285	15.9%
Senior	1,974	24.4%
Masters Candidate	824	10.2%
Education Specialist	10	.1%
Special Graduate	286	3.5%
Non-Credit/Non-Degree	18	.2%
Total	8,099	100.0%

Spring 2010 Enrollment by Full-Time/Part-Time Status

	<u>Undergraduate</u>	<u>Graduate</u>	<u>Total</u>	<u>Percent</u>
Full-Time	5,592	403	5,995	74.0%
Part-Time	1,386	718	2,104	26.0%
Total	6,978	1,121	8,099	100.0%

Spring 2010 Enrollment by Current Entry Status

	<u>Undergraduate</u>	<u>Graduate</u>	<u>Total</u>	<u>Percent</u>
Early Admissions	422		422	5.21%
Continuing	5,871	875	6,746	83.29%
First-Time Freshmen	147		147	1.82%
New Graduate		171	171	2.11%
Other Undergraduate	2		2	.03%
Re-Entry	290	44	334	4.12%
Transfer	242	31	273	3.37%
Visiting	4		4	.05%
Total	6,978	1,121	8,099	100.00%

Spring 2010 Enrollment by Gender

	<u>Undergraduate</u>	<u>Graduate</u>	<u>Total</u>	<u>Percent</u>
Female	4,320	774	5,094	62.9%
Male	2,658	347	3,005	37.1%
Total	6,978	1,121	8,099	100.0%

Spring 2010 Enrollment by Ethnicity

	<u>Undergraduate</u>	<u>Graduate</u>	<u>Total</u>	<u>Percent</u>
Amer Indian/Alaska Native	52	5	57	.7%
Asian/Pacific Islander	78	14	92	1.1%
Black	1,297	160	1,457	18.0%
Foreign	272	147	419	5.2%
Hispanic	93	11	104	1.3%
White	5,132	780	5,912	73.0%
Race/Ethnicity Unknown	54	4	58	.7%
Total	6,978	1,121	8,099	100.0%

Spring 2010 Enrollment by Gender and Ethnicity

	<u>Female</u>	<u>Male</u>	<u>Total</u>	<u>Percent</u>
Amer Indian/Alaska Native	37	20	57	.7%
Asian/Pacific Islander	52	40	92	1.1%
Black	991	466	1,457	18.0%
Foreign	169	250	419	5.2%
Hispanic	67	37	104	1.3%
White	3,742	2,170	5,912	73.0%
Race/Ethnicity Unknown	36	22	58	.7%
<i>Total</i>	<i>5,094</i>	<i>3,005</i>	<i>8,099</i>	<i>100.0%</i>

Spring 2010 Undergraduate Enrollment by Gender and Ethnicity

	<u>Female</u>	<u>Male</u>	<u>Total</u>	<u>Percent</u>
Amer Indian/Alaska Native	32	20	52	.7%
Asian/Pacific Islander	41	37	78	1.1%
Black	863	434	1,297	18.6%
Foreign	119	153	272	3.9%
Hispanic	59	34	93	1.3%
White	3,172	1,960	5,132	73.6%
Race/Ethnicity Unknown	34	20	54	.8%
<i>Total</i>	<i>4,320</i>	<i>2,658</i>	<i>6,978</i>	<i>100.0%</i>

Spring 2010 Graduate Enrollment by Gender and Ethnicity

	<u>Female</u>	<u>Male</u>	<u>Total</u>	<u>Percent</u>
Amer Indian/Alaska Native	5		5	.4%
Asian/Pacific Islander	11	3	14	1.2%
Black	128	32	160	14.3%
Foreign	50	97	147	13.1%
Hispanic	8	3	11	1.0%
White	570	210	780	69.6%
Race/Ethnicity Unknown	2	2	4	.4%
<i>Total</i>	<i>774</i>	<i>347</i>	<i>1,121</i>	<i>100.0%</i>

Spring 2010 Undergraduate Enrollment by Rank and Ethnicity

	<u>EA</u>	<u>FR</u>	<u>SO</u>	<u>JR</u>	<u>SR</u>	<u>ND</u>	<u>Total</u>
Amer Indian/Alaska Native	4	13	2	14	19		52
Asian/Pacific Islander	8	17	15	16	22		78
Black	53	429	243	223	349		1,297
Foreign	1	80	53	60	78		272
Hispanic	2	31	16	13	30	1	93
White	346	1,385	976	949	1,460	16	5,132
Race/Ethnicity Unknown	8	13	7	10	16		54
<i>Total</i>	<i>422</i>	<i>1,968</i>	<i>1,312</i>	<i>1,285</i>	<i>1,974</i>	<i>17</i>	<i>6,978</i>

EA – Early Admissions

FR- Freshman

SO – Sophomore

JR – Junior

SR – Senior

ND – Non-Credit/Non-Degree

Spring 2010 Graduate Enrollment by Rank and Ethnicity

	<u>MC</u>	<u>ES</u>	<u>SG</u>	<u>ND</u>	<u>Total</u>
Amer Indian/Alaska Native	2		3		5
Asian/Pacific Islander	12		2		14
Black	102	3	55		160
Foreign	144		3		147
Hispanic	8		3		11
White	553	7	219	1	780
Race/Ethnicity Unknown	3		1		4
<i>Total</i>	<i>824</i>	<i>10</i>	<i>286</i>	<i>1</i>	<i>1,121</i>

MC – Masters Candidate

ES – Education Specialist

SG – Special Graduate

ND – Non-Credit/Non-Degree

Spring 2010 Enrollment by Age

	<u>Undergraduate</u>	<u>Graduate</u>	<u>Total</u>	<u>Percent</u>
Under 18	270		270	3.3%
18 – 19	1,800		1,800	22.2%
20 – 21	1,814	6	1,820	22.5%
22 – 24	1,437	268	1,705	21.1%
25 – 29	782	306	1,088	13.4%
30 – 34	363	196	559	6.9%
35 – 39	230	110	340	4.2%
40 – 49	202	147	349	4.3%
50 – 64	75	80	155	1.9%
Over 64	5	8	13	.2%
Total	6,978	1,121	8,099	100.0%

Spring 2010 Enrollment by Age Group

	<u>Undergraduate</u>	<u>Graduate</u>	<u>Total</u>	<u>Percent</u>
Under 25	5,321	274	5,595	69.1%
25 and Older	1,657	847	2,504	30.9%
Total	6,978	1,121	8,099	100.0%

Spring 2010 Average Age

	<u>Average Age</u>	<u>Median Age</u>
All Students	24.5	22
First-Time Freshmen	24.3	21
Undergraduate	23.2	21
Graduate	32.3	29

Spring 2010 Enrollment by Parish of Origin

<u>Parish</u>	<u>Enrollment</u>		<u>Parish</u>	<u>Enrollment</u>
Acadia	214		St Landry	133
Allen	277		St Martin	40
Ascension	15		St Mary	29
Assumption	4		St Tammany	30
Avoyelles	5		Tangipahoa	14
Beauregard	494		Terrebonne	21
Bossier	12		Vermilion	112
Caddo	24		Vernon	149
Calcasieu	4,169		Washington	4
Cameron	219		Webster	2
Claiborne	1		West Baton Rouge	4
Concordia	3		West Carroll	2
DeSoto	4		West Feliciana	8
East Baton Rouge	47			
East Carroll	1		Total Louisiana	7,168
East Feliciana	2		% of Total Enrollment	88.5%
Evangeline	115		Number of Parishes	56
Franklin	2			
Grant	16			
Iberia	42		Five Parish Total	5,691
Iberville	7		% of Total Enrollment	70.3%
Jackson	1			
Jefferson	25			
Jefferson Davis	532			
Lafayette	135			
Lafourche	8			
LaSalle	5			
Lincoln	3			
Livingston	17			
Madison	2			
Morehouse	4			
Natchitoches	13			
Orleans	35			
Ouachita	24			
Plaquemines	4			
Pointe Coupee	39			
Rapides	62			
Richland	1			
Sabine	14			
St Bernard	3			
St Charles	11			
St James	5			
St John	4			

Spring 2010 Enrollment by State of Origin

<u>State</u>	<u>Enrollment</u>
Alabama	1
Alaska	1
Arizona	3
Arkansas	3
California	11
Colorado	2
Connecticut	1
Florida	10
Georgia	5
Idaho	1
Illinois	2
Indiana	4
Iowa	3
Kansas	2
Louisiana	7,168
Maine	1
Maryland	2
Massachusetts	1
Michigan	2
Minnesota	4
Mississippi	13
Missouri	2
Nevada	1
New Jersey	2
New Mexico	1
New York	2
North Carolina	4
Ohio	4
Oklahoma	10
Oregon	1
Pennsylvania	3
Rhode Island	2
South Carolina	2
Tennessee	3
Texas	352
Virginia	5
Washington	4
Wisconsin	3
Total	7,641
Total Out of State	473
% Out of State of Total Enrollment	5.8%
Number of States (Other than Louisiana)	37

Spring 2010 Enrollment by Foreign Country of Origin

<u>Country</u>	<u>Enrollment</u>		<u>Country</u>	<u>Enrollment</u>
Azerbaijan	2		Turkey	6
Bangladesh	1		Ukraine	3
Belgium	1		United Kingdom	6
Benin	1		Venezuela	1
Bolivia	7		Vietnam	62
Brazil	1			
Bulgaria	1		Total Foreign	458
Cambodia	1		% of Total Enrollment	5.7%
Cameroon	1		Number of Countries (Other than USA)	48
Canada	5			
Chile	1			
China	61			
Colombia	13			
Croatia	2			
Ecuador	8			
Equatorial Guinea	1			
Germany	1			
Ghana	1			
Honduras	3			
India	85			
Indonesia	17			
Ireland	5			
Israel	1			
Jamaica	3			
Kenya	3			
Korea, Republic of	14			
Lithuania	1			
Macedonia	1			
Mexico	7			
Mongolia	1			
Nepal	75			
Nigeria	12			
Pakistan	4			
Peru	4			
Philippines	2			
Romania	3			
Russia	2			
Saudi Arabia	1			
Serbia	2			
South Africa	2			
Taiwan	7			
Thailand	14			
Trinidad and Tobago	2			

Spring 2010 Undergraduate Enrollment by Residency

	<u>Part-Time</u>	<u>Full-Time</u>	<u>Total</u>	<u>Percent</u>
Louisiana	1,336	4,923	6,259	89.7%
Out of state	34	387	421	6.0%
Foreign	16	282	298	4.3%
<i>Total</i>	<i>1,386</i>	<i>5,592</i>	<i>6,978</i>	<i>100.0%</i>

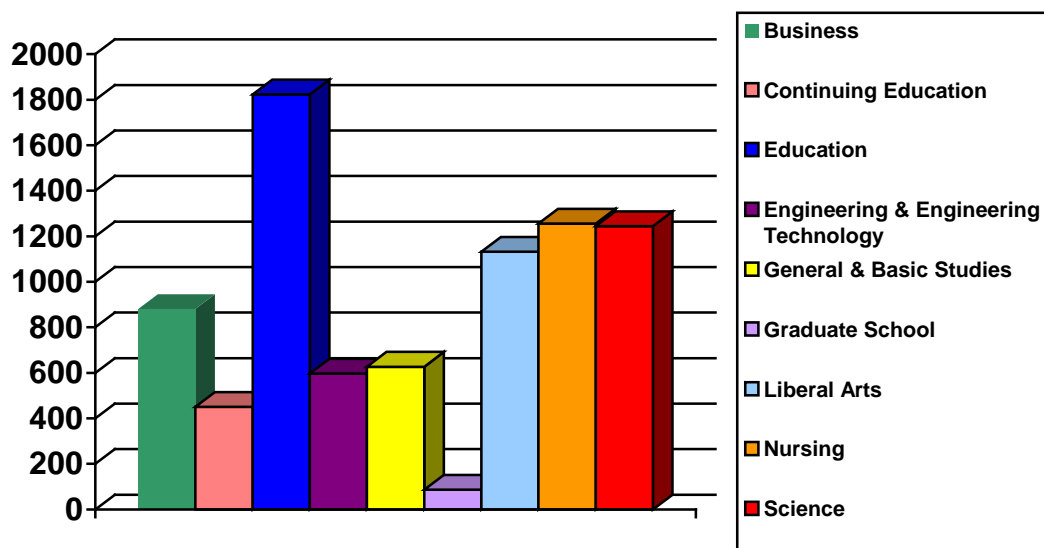
Spring 2010 Graduate Enrollment by Residency

	<u>Part-Time</u>	<u>Full-Time</u>	<u>Total</u>	<u>Percent</u>
Louisiana	669	240	909	81.1%
Out of state	19	33	52	4.6%
Foreign	30	130	160	14.3%
<i>Total</i>	<i>718</i>	<i>403</i>	<i>1,121</i>	<i>100.0%</i>

This Page is Intentionally Left Blank

Spring 2010 Enrollment by College

	<u>Undergraduate</u>	<u>Graduate</u>	<u>Total</u>	<u>Percent</u>
Business	792	89	881	10.9%
Continuing Education	435	16	451	5.5%
Education	1,175	648	1,823	22.5%
Engineering & Engineering Technology	534	63	597	7.4%
General & Basic Studies	627		627	7.7%
Graduate School		87	87	1.1%
Liberal Arts	1,100	32	1,132	14.0%
Nursing	1,169	87	1,256	15.5%
Science	1,146	99	1,245	15.4%
Total	6,978	1,121	8,099	100.0%



Historical Spring Undergraduate Enrollment by College

	<u>2006</u>	<u>2007</u>	<u>2008</u>	<u>2009</u>	<u>2010</u>
Business	1,037	1,018	967	876	792
Continuing Education*	21	8	15	21	435
Education	1,229	1,160	1,094	1,089	1,175
Engineering & Engineering Technology	484	485	524	539	534
General & Basic Studies*	814	849	938	977	627
Liberal Arts	1,136	1,060	968	1,040	1,100
Nursing	1,036	1,008	1,081	1,034	1,169
Science	1,158	1,130	1,062	1,099	1,146
Total	6,915	6,718	6,649	6,675	6,978

* In Fall 2009, Early Admissions was moved from General & Basic Studies to Continuing Education.

Historical Spring Graduate Enrollment by College

	<u>2006</u>	<u>2007</u>	<u>2008</u>	<u>2009</u>	<u>2010</u>
Business	80	72	86	100	89
Continuing Education	19	17	14	15	16
Education	575	537	588	595	648
Engineering & Engineering Technology	75	101	69	57	63
Graduate School	82	64	61	61	87
Liberal Arts	40	32	32	39	32
Nursing	51	54	78	77	87
Science	71	94	104	77	99
Total	993	971	1,032	1,021	1,121

Spring 2010 Enrollment by College and Department

<u>College</u>	<u>Department Name</u>	<u>Undergraduate</u>	<u>Graduate</u>	<u>Total</u>
Business	Accounting, Fin, & Economics	340		340
	Mgmt, Marketing and Gen Bus	452	89	541
<i>College of Business Total</i>		792	89	881
Continuing Education	Continuing Education	435	16	451
<i>Continuing Education Total</i>		435	16	451
Education	Educ Leadership & Instr Tech	33	135	168
	Health & Human Performance	393	32	425
	Psychology	219	59	278
	Teacher Education	530	422	952
<i>College of Education Total</i>		1,175	648	1,823
Engineering & Engineering Technology	Engineering	402	63	465
	Engineering Technology	132		132
<i>College of Engineering & Engineering Technology Total</i>		534	63	597
General & Basic Studies	Basic Studies	627		627
<i>General & Basic Studies Total</i>		627		627
Graduate School	Graduate School		87	87
<i>Graduate School Total</i>			87	87
Liberal Arts	English & Foreign Languages	146	30	176
	History	142		142
	Mass Communication	156		156
	Performing Arts	107	2	109
	Social Sciences	368		368
	Visual Arts	181		181
<i>College of Liberal Arts Total</i>		1,100	32	1,132
Nursing	Graduate Nursing		87	87
	Undergraduate Nursing	1,169		1,169
<i>College of Nursing Total</i>		1,169	87	1,256
Science	Agriculture	283	33	316
	Biology & Health Sciences	470		470
	Chemistry	100	20	120
	Math, Computer Science, & Stat	169	46	215
	Nutrition and Family Studies	109		109
	Physics	15		15
<i>College of Science Total</i>		1,146	99	1,245
University Total		6,978	1,121	8,099

Historical Spring Undergraduate Enrollment by College and Department

College	Department Name	2006	2007	2008	2009	2010
Business	Accounting, Fin, & Economics	346	339	340	352	340
	Mgmt, Marketing and Gen Bus	691	679	627	524	452
College of Business Total		1,037	1,018	967	876	792
Continuing Education	Continuing Education	21	8	15	21	435
Continuing Education Total		21	8	15	21	435
Education	Educ Leadership & Instr Tech	22	21	17	22	33
	Health & Human Performance	378	360	363	384	393
	Psychology	228	239	228	205	219
	Teacher Education	601	540	486	478	530
College of Education Total		1,229	1,160	1,094	1,089	1,175
Engineering & Engineering Technology	Engineering	336	319	349	380	402
	Engineering Technology	148	166	175	159	132
College of Engineering & Engineering Technology Total		484	485	524	539	534
General & Basic Studies	Basic Studies	814	849	938	977	627
Gen & Basic Studies Total		814	849	938	977	627
Liberal Arts	English & Foreign Languages	133	120	129	139	146
	History	130	129	127	139	142
	Mass Communication	199	173	141	158	156
	Performing Arts	112	102	81	105	107
	Social Sciences	395	369	313	322	368
	Visual Arts	167	167	177	177	181
College of Liberal Arts Total		1,136	1,060	968	1,040	1,100
Nursing	Undergraduate Nursing	1,036	1,008	1,081	1,034	1,169
College of Nursing Total		1,036	1,008	1,081	1,034	1,169
Science	Agriculture*	193	198	192	252	283
	Biological & Envr Sciences*	559	551	548	485	
	Biology & Health Sciences*					470
	Chemistry	93	95	72	95	100
	Math, Computer Science, & Stat	151	149	142	162	169
	Nutrition and Family Studies	151	127	100	94	109
	Physics	11	10	8	11	15
College of Science Total		1,158	1,130	1,062	1,099	1,146
University Total		6,915	6,718	6,649	6,675	6,978

*In Fall 2009 Environmental Science enrollment was moved from Biological & Environmental Sciences to Agriculture.

Historical Spring Graduate Enrollment by College and Department

<u>College</u>	<u>Department Name</u>	<u>2006</u>	<u>2007</u>	<u>2008</u>	<u>2009</u>	<u>2010</u>
Business	Mgmt, Marketing and Gen Bus	80	72	86	100	89
<i>College of Business Total</i>		80	72	86	100	89
Continuing Education	Continuing Education	19	17	14	15	16
<i>Continuing Education Total</i>		19	17	14	15	16
Education	Educ Leadership & Instr Tech	168	116	126	122	135
	Health & Human Performance	26	20	22	41	32
	Psychology	59	61	63	64	59
	Teacher Education	322	340	377	368	422
<i>College of Education Total</i>		575	537	588	595	648
Engineering & Engineering Tech	Engineering	75	101	69	57	63
<i>College of Engineering & Engineering Technology Total</i>		75	101	69	57	63
Graduate School	Graduate School	82	64	61	61	87
<i>Graduate School Total</i>		82	64	61	61	87
Liberal Arts	English & Foreign Languages	35	27	30	35	30
	Performing Arts	5	5	2	4	2
<i>College of Liberal Arts Total</i>		40	32	32	39	32
Nursing	Graduate Nursing	51	54	78	77	87
<i>College of Nursing Total</i>		51	54	78	77	87
Science	Agriculture*	4	6	11	25	33
	Biological & Envr Sciences*	12	8	10		
	Biology & Health Sciences*					
	Chemistry	20	16	16	15	20
	Math, Computer Science, & Stat	27	56	59	37	46
	Nutrition and Family Studies	8	8	8		
<i>College of Science Total</i>		71	94	104	77	99
University Total		993	971	1,032	1,021	1,121

*In Fall 2009 Environmental Science enrollment was moved from Biological & Environmental Sciences to Agriculture.

Spring 2010 Enrollment by Department and Major

<u>College/Department</u>	<u>Major</u>	<u>Undergraduate</u>	<u>Graduate</u>	<u>Total</u>
Business				
Accounting, Fin & Economics	Accounting	247		247
	Finance	93		93
<i>Department Total</i>		<i>340</i>		<i>340</i>
Mgmt, Marketing, & Gen Bus	Business Administration		89	89
	Gen Business Administration	162		162
	Management	181		181
	Marketing	109		109
<i>Department Total</i>		<i>452</i>	<i>89</i>	<i>541</i>
College of Business Total		792	89	881
Continuing Education				
Continuing Education	EASE Program	13	16	29
	Undeclared	422		422
<i>Department Total</i>		<i>435</i>	<i>16</i>	<i>451</i>
Continuing Education Total		435	16	451
Education				
Educ Leadership & Instr Tech	Business Education – Grades 6-12	33		33
	Educational Leadership		82	82
	Educational Technology Leadership		25	25
	Instructional Technology		28	28
<i>Department Total</i>		<i>33</i>	<i>135</i>	<i>168</i>
Health & Human Performance	Athletic Training	48		48
	Health & Human Performance		32	32
	Health & Human Performance, Education	6		6
	Health & Human Performance, General	181		181
	Health & Physical Education, Gr K-12	157		157
	Undeclared	1		1
<i>Department Total</i>		<i>393</i>	<i>32</i>	<i>425</i>
Psychology	Psychology	219	59	278
<i>Department Total</i>		<i>219</i>	<i>59</i>	<i>278</i>

Spring 2010 Enrollment by Department and Major (continued)

<u>College/Department</u>	<u>Major</u>	<u>Undergraduate</u>	<u>Graduate</u>	<u>Total</u>
Teacher Education	Add-on Teacher Certification		13	13
	Alt Certification – Grades 1-12 Mild/Moderate Sp Ed		27	27
	Alt Certification – Grades K-12 Health & Physical Ed		12	12
	Alt Certification – Grades 1-5		54	54
	Alt Certification – Grade 6-12		46	46
	Alt Certification – K-12 Art Ed		5	5
	Alt Certification – Grades PK-3		27	27
	Curriculum and Instruction		13	13
	Early Childhood Educ – Grades PK- 3	246		246
	Elementary Education – Grades 1–5	253	69	322
	School Counseling		29	29
	Secondary Education	1		1
	Secondary Education Grades 6-12		91	91
	Special Education, Mild/Mod Gr 1-12		29	29
	Special Education		7	7
	Special Education, General	30		30
<i>Department Total</i>		<i>530</i>	<i>422</i>	<i>952</i>
<i>College of Education Total</i>		<i>1,175</i>	<i>648</i>	<i>1,823</i>
Engineering & Engineering Technology				
Engineering	Engineering	402	63	465
<i>Department Total</i>		<i>402</i>	<i>63</i>	<i>465</i>
Engineering Technology	Engineering Technology	132		132
<i>Department Total</i>		<i>132</i>		<i>132</i>
<i>College of Engineering & Engineering Technology Total</i>		<i>534</i>	<i>63</i>	<i>597</i>
General & Basic Studies				
Basic Studies	Basic Studies	143		143
	General Studies	482		482
	Undeclared	2		2
<i>Department Total</i>		<i>627</i>		<i>627</i>
<i>General & Basic Studies Total</i>		<i>627</i>		<i>627</i>

Spring 2010 Enrollment by Department and Major (continued)

<u>College/Department</u>	<u>Major</u>	<u>Undergraduate</u>	<u>Graduate</u>	<u>Total</u>
Graduate School				
Graduate School	Non-degree		87	87
<i>Department Total</i>			87	87
Graduate School Total			87	87
Liberal Arts				
English & Foreign Languages	Creative Writing		21	21
	English	63	9	72
	English Education Grades 6 – 12	60		60
	Foreign Language Education Gr 6-12	12		12
	French	1		1
	Spanish	10		10
<i>Department Total</i>		146	30	176
History	History	58		58
	Liberal Studies	27		27
	Social Studies Education Gr 6 – 12	57		57
<i>Department Total</i>		142		142
Mass Communication	Communication Studies	3		3
	Mass Communication	149		149
	Speech	2		2
	Speech Education Grades 6-12	2		2
<i>Department Total</i>		156		156
Performing Arts	Music Education	1	2	3
	Music Educ-Instrumental, Gr K-12	50		50
	Music Education – Vocal, Gr 6 – 12	21		21
	Music Performance	21		21
	Theatre Arts	14		14
<i>Department Total</i>		107	2	109
Social Sciences	Criminal Justice	153		153
	Criminal Justice Online	67		67
	General Studies	4		4
	Government	33		33
	Paralegal Studies	34		34
	Sociology	77		77
<i>Department Total</i>		368		368

Spring 2010 Enrollment by Department and Major (continued)

<u>College/Department</u>	<u>Major</u>	<u>Undergraduate</u>	<u>Graduate</u>	<u>Total</u>
Visual Arts	Art	138		138
	Art Education	4		4
	Art Education – Grades K – 12	38		38
	General Studies	1		1
<i>Department Total</i>		<i>181</i>		<i>181</i>
College of Liberal Arts Total		1,100	32	1,132
Nursing				
Graduate Nursing	Nursing		87	87
<i>Department Total</i>			<i>87</i>	<i>87</i>
Undergraduate Nursing	Nursing	1,159		1,159
	Nursing Online	10		10
<i>Department Total</i>		<i>1,169</i>		<i>1,169</i>
College of Nursing Total		1,169	87	1,256
Science				
Agriculture	Agricultural Education – Grs 6 – 12	20		20
	Agricultural Sciences	190		190
	Environmental & Chemical Sciences		33	33
	Environmental Science	17		17
	Environmental Science Education Grades 6-12	2		2
	Natural Resource Conserv Mgmt	19		19
	Wildlife Management	35		35
<i>Department Total</i>		<i>283</i>	<i>33</i>	<i>316</i>
Biology & Health Sciences	Biological Science	217		217
	Biology Education – Grades 6 – 12	14		14
	Clinical Laboratory Science	54		54
	Radiologic Sciences	185		185
<i>Department Total</i>		<i>470</i>		<i>470</i>
Chemistry	Chemistry	98		98
	Chemistry Education – Grades 6-12	2		2
	Environmental & Chemical Sciences		20	20
<i>Department Total</i>		<i>100</i>	<i>20</i>	<i>120</i>

Spring 2010 Enrollment by Department and Major (continued)

<u>College/Department</u>	<u>Major</u>	<u>Undergraduate</u>	<u>Graduate</u>	<u>Total</u>
Math, Computer Sci and Stat	Computer Information Tech	23		23
	Computer Science	85		85
	Mathematical Sciences		46	46
	Mathematics	24		24
	Mathematics Education – Grades 6-12	36		36
	Undeclared	1		1
<i>Department Total</i>		<i>169</i>	<i>46</i>	<i>215</i>
Nutrition & Family Studies	Family & Consumer Sciences	84		84
	Family & Consumer Sciences Education Grades 6-12	1		1
	Family & Consumer Sciences Online	21		21
	General Studies	3		3
<i>Department Total</i>		<i>109</i>		<i>109</i>
Physics	Physics	15		15
<i>Department Total</i>		<i>15</i>		<i>15</i>
<i>College of Science Total</i>		<i>1,146</i>	<i>99</i>	<i>1,245</i>
University Total		6,978	1,121	8,099

Historical Spring Enrollment Data Since 1940

<u>Spring</u>	<u>Under-graduate</u>	<u>Graduate</u>	<u>Total</u>		<u>Spring</u>	<u>Under-graduate</u>	<u>Graduate</u>	<u>Total</u>
2010	6,978	1,121	8,099		1974	4,544	932	5,476
2009	6,675	1,021	7,696		1973	4,659	1,015	5,674
2008	6,649	1,032	7,681		1972	4,659	943	5,602
2007	6,718	971	7,689		1971	4,332	830	5,162
2006	6,915	993	7,908		1970	4,016	616	4,632
2005	7,178	981	8,159		1969	4,045	488	4,533
2004	6,877	1,003	7,880		1968	3,990	376	4,366
2003	6,587	1,008	7,595		1967	3,555	362	3,917
2002	6,332	995	7,327		1966	3,009	300	3,309
2001	6,171	990	7,161		1965	2,866	240	3,106
2000	6,319	1,115	7,434		1964	2,416	172	2,588
1999	6,315	1,068	7,383		1963	2,468	139	2,607
1998	6,172	1,111	7,283		1962	2,617	87	2,704
1997	6,313	1,117	7,430		1961	2,506		2,506
1996	6,689	1,106	7,795		1960	2,369		2,369
1995	6,993	1,142	8,135		1959	2,163		2,163
1994	7,023	1,058	8,081		1958	1,943		1,943
1993	6,618	1,134	7,752		1957	1,638		1,638
1992	6,387	1,071	7,458		1956	1,648		1,648
1991	6,015	1,036	7,051		1955	1,380		1,380
1990	6,080	1,089	7,169		1954	998		998
1989	5,884	1,066	6,950		1953	928		928
1988	5,901	1,022	6,923		1952	933		933
1987	6,096	1,057	7,153		1951	601		601
1986	6,031	1,195	7,226		1950	336		336
1985	6,146	1,487	7633		1949	501		501
1984	6,049	1,343	7,392		1948	529		529
1983	5,704	1,399	7,103		1947	560		560
1982	5,206	1,521	6,727		1946	268		268
1981	4,837	723	5,560		1945	116		116
1980	4,203	709	4,912		1944	107		107
1979	4,198	650	4,848		1943	173		173
1978	4,396	721	5,117		1942	181		181
1977	4,720	688	5,408		1941	215		215
1976	4,817	903	5,720		1940	na		na
1975	4,585	942	5,527					

Retention and Graduation Rates

First-Time Full-Time Bachelor's Degree Seeking Freshman First to Second Year Retention Rate

	<u>% Retained</u>
Fall 2008 to Fall 2009	67.2%
Fall 2007 to Fall 2008	68.4%
Fall 2006 to Fall 2007	65.5%

IPEDS Graduation Rates

	<u>2002 Cohort</u>
4 Years	14%
5 Years	29%
6 Years	37%

Time to Degree First-Time Full-Time Bachelor's Degree Seeking Freshman

2008-2009 Completers	5.7 years
2007-2008 Completers	5.7 years

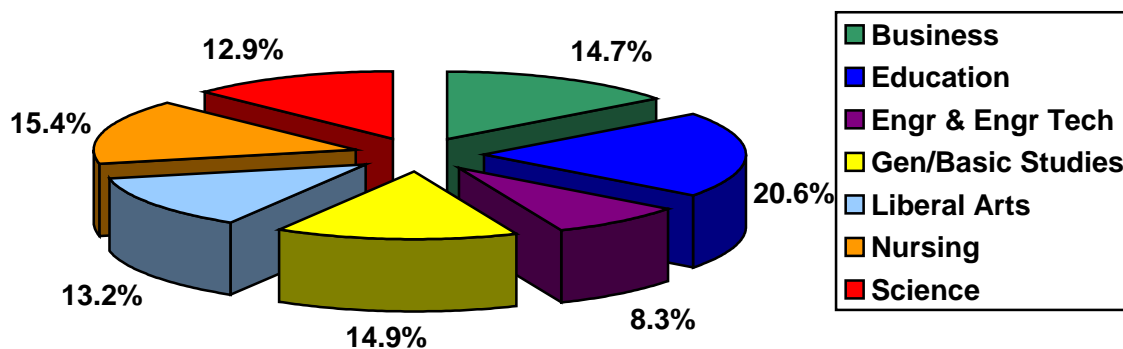
*Source Board of Regents TTDRPTBOR

Degrees Conferred
July 1, 2008 – June 30, 2009

Degrees Conferred by College and Level

	<u>Associate</u>	<u>Bachelor's</u>	<u>Master's</u>	<u>Total</u>
Business		186	30	216
Education	1	155	146	302
Engineering & Engineering Technology	18	69	35	122
General & Basic Studies	32	186		218
Liberal Arts	23	163	8	194
Nursing	40	158	29	227
Science	8	132	49	189
Total	122	1,049	297	1,468

Degrees Conferred by College



Historical Degrees Conferred by College

	<u>04-05</u>	<u>05-06</u>	<u>06-07</u>	<u>07-08</u>	<u>08-09</u>
Business	237	206	230	197	216
Education	299	328	295	263	302
Engineering & Engineering Technology	87	133	125	163	122
General & Basic Studies	223	219	250	264	218
Liberal Arts	256	226	221	223	194
Nursing	88	132	163	179	227
Science	167	168	169	177	189
<i>Total</i>	<i>1,357</i>	<i>1,412</i>	<i>1,453</i>	<i>1,466</i>	<i>1,468</i>

Historical Degrees Conferred by Level

	<u>04-05</u>	<u>05-06</u>	<u>06-07</u>	<u>07-08</u>	<u>08-09</u>
Associate	124	120	138	148	122
Bachelor	991	1,041	1,043	1,055	1,049
Master	235	248	268	262	297
Education Specialist	7	3	4	1	
<i>Total</i>	<i>1,357</i>	<i>1,412</i>	<i>1,453</i>	<i>1,466</i>	<i>1,468</i>

2008-2009 Degrees Conferred by Gender and Ethnicity

	<u>Female</u>	<u>Male</u>	<u>Total</u>
Amer Indian/Alaska Native	5	1	6
Asian/Pacific Islander	10	2	12
Black	150	73	223
Foreign	33	94	127
Hispanic	14	3	17
White	686	389	1,075
Race/Ethnicity Unknown	6	2	8
Total	904	564	1,468

2008-2009 Degrees Conferred by Gender and Level

	<u>Associate</u>	<u>Bachelor's</u>	<u>Master's</u>	<u>Total</u>
Female	78	660	166	904
Male	44	389	131	564
Total	122	1,049	297	1,468

Historical Degrees Conferred by Gender

	<u>04-05</u>	<u>05-06</u>	<u>06-07</u>	<u>07-08</u>	<u>08-09</u>
Female	841	865	909	912	904
Male	516	547	544	554	564
Total	1,357	1,412	1,453	1,466	1,468

2008-2009 Degrees Conferred by Ethnicity and Level

	<u>Associate</u>	<u>Bachelor's</u>	<u>Master's</u>	<u>Total</u>
Amer Indian/Alaska Native		6		6
Asian/Pacific Islander	2	10		12
Black	20	184	19	223
Foreign	5	31	91	127
Hispanic	1	12	4	17
White	94	798	183	1,075
Race/Ethnicity Unknown		8		8
Total	122	1,049	297	1,468

Historical Degrees Conferred by Ethnicity

	<u>04-05</u>	<u>05-06</u>	<u>06-07</u>	<u>07-08</u>	<u>08-09</u>
Amer Indian/Alaska Native	6	10	8	8	6
Asian/Pacific Islander	7	12	14	13	12
Black	212	209	235	234	223
Foreign	74	95	96	121	127
Hispanic	16	23	12	18	17
White	1,038	1,059	1,083	1,066	1,075
Race/Ethnicity Unknown	4	4	5	6	8
Total	1,357	1,412	1,453	1,466	1,468

Top 10 Bachelor's Degrees Conferred 2008–2009

	<u>Number of Degrees</u>
BGS General Studies	186
BSN Nursing	158
BS Management	57
BS Engineering	55
BS Accounting	45
BS Psychology	41
BS Marketing	38
BS Elementary Education Gr 1-5	31
BS Early Childhood Education Gr PK-3	31
BS Mass Communication	28

Top 5 Associate Degrees Conferred 2008–2009

	<u>Number of Degrees</u>
AGS General Studies	46
ADN Nursing	40
AS Engineering Technology	18
AA Paralegal Studies	10
AS Computer Information Technology	7

Top 5 Master's Degrees Conferred 2008–2009

	<u>Number of Degrees</u>
MS Mathematical Sciences	39
Med Educational Leadership	36
MEng Engineering	35
MBA Business Administration	30
MSN Nursing	29

Future Plans of Fall 2008 / Spring 2009 Graduates*

<u>All Degree Levels</u>	<u>Fall 2008</u>	<u>Spring 2009</u>	<u>2008-09</u>
Employment, FT paid	82.2%	74.2%	78.3%
Employment, PT paid	1.9%	2.2%	2.1%
Grad/Prof school FT	6.3%	12.1%	9.2%
Grad/Prof school PT	5.5%	6.3%	5.9%
Additional UG coursework	1.5%	1.3%	1.4%
Volunteer activity (Peace Corp)		0.7%	0.3%
Military	0.2%		0.1%
Starting or raising a family	1.1%	1.1%	1.1%
Other	1.3%	2.0%	1.6%
Total	100.0%	99.9%	100.0%
<u>Bachelor Degree Level Only</u>	<u>Fall 2008</u>	<u>Spring 2009</u>	<u>2008-09</u>
Employment, FT paid	78.4%	73.6%	76.0%
Employment, PT paid	2.6%	2.2%	2.4%
Grad/Prof school FT	8.2%	11.0%	9.6%
Grad/Prof school PT	6.9%	7.5%	7.2%
Additional UG coursework	1.6%	0.6%	1.1%
Volunteer activity (Peace Corp)		0.9%	0.5%
Military	0.3%		0.2%
Starting or raising a family	1.3%	1.6%	1.4%
Other	0.7%	2.5%	1.6%
Total	100.0%	99.9%	100.0%

*Survey administered each semester at GRAD Fest

64% of Completers responded to College portrait question: What is most likely to be your principal activity upon graduation?

Student Credit Hours (SCH)
Fall 2009 SCH's by Department and Level

	Lower UG	Upper UG	Graduate	Total
Accounting, Fin & Econ	903	2,763	357	4,023
Mgmt, Marketing and Gen Bus	1,317	2,883	483	4,683
<i>College of Business Total</i>	2,220	5,646	840	8,706
Educ Leadership & Instr Tech	841	418	1,128	2,387
Health & Human Performance	2,718	2,491	342	5,551
Psychology	3,729	1,860	602	6,191
Teacher Education	894	2,724	879	4,497
Stdnt Tchng & Prof Educ Srvc		423	132	555
<i>College of Education Total</i>	8,182	7,916	3,083	19,181
Engineering	716	1,635	619	2,970
Engineering Technology	352	565		917
<i>College of Engineering and Engineering Technology Total</i>	1,068	2,200	619	3,887
English & Foreign Languages	7,678*	2,159	334	10,171
History	4,497	1,557	15	6,069
Mass Communications	2,884	1,379	3	4,266
Performing Arts	2,005	1,176	26	3,207
Social Sciences	4,598	4,128	30	8,756
Visual Arts	1,131	1,494	15	2,640
<i>College of Liberal Arts Total</i>	22,793	11,893	423	31,902
Graduate Nursing			583	583
Undergraduate Nursing	320	5,533	10	5,863
<i>College of Nursing Total</i>	320	5,533	593	6,446
Agriculture	1,924	1,392	209	3,525
Biology & Health Sciences	5,770	2,914	20	8,704
Chemistry	2,388	1,205	151	3,744
Math, Comp Sci, & Stat	10,601**	3,234	658	14,493
Nutrition and Family Studies	865	1,339	99	2,303
Physics	1,351	918	7	2,276
<i>College of Science Total</i>	22,899	11,002	1,144	35,045

* Includes 880 developmental

** Includes 2,024 developmental

Fall 2009 SCH's by Department and Level (continued)

	Lower UG	Upper UG	Graduate	Total
General and Basic Studies	13	64		77
<i>Division of General and Basic Studies Total</i>	<i>13</i>	<i>64</i>		<i>77</i>
Freshmen Foundations	1,390	2		1,392
<i>Freshman Foundations Total</i>	<i>1,390</i>	<i>2</i>		<i>1,392</i>
Military Science	23	3		26
<i>Military Science Total</i>	<i>23</i>	<i>3</i>		<i>26</i>
<i>University Total</i>	<i>58,908</i>	<i>44,259</i>	<i>6,702</i>	<i>109,869</i>

Student rank classification is used to determine SCH level according to BOR definition.

Historical Fall SCH's by Department

	<u>2005</u>	<u>2006</u>	<u>2007</u>	<u>2008</u>	<u>2009</u>
Accounting, Fin & Econ	4,443	4,308	3,852	3,891	4,023
Mgmt, Marketing and Gen Bus	5,520	5,565	5,433	5,574	4,683
<i>College of Business Total</i>	<i>9,963</i>	<i>9,873</i>	<i>9,285</i>	<i>9,465</i>	<i>8,706</i>
Educ Leadership & Instr Tech	3,260	2,394	2,046	2,046	2,387
Health & Human Performance	4,835	4,643	5,380	4,882	5,551
Psychology	6,854	5,869	5,846	6,024	6,191
Teacher Education	4,504	3,958	3,592	3,605	4,497
Student Tchng & Prof Educ Srvc	909	726	636	477	555
<i>College of Education Total</i>	<i>20,362</i>	<i>17,590</i>	<i>17,500</i>	<i>17,034</i>	<i>19,181</i>
Engineering	2,352	2,467	3,129	2,877	2,970
Engineering Technology	1,038	1,143	1,129	1,157	917
<i>College of Engineering and Engineering Technology Total</i>	<i>3,390</i>	<i>3,610</i>	<i>4,258</i>	<i>4,034</i>	<i>3,887</i>
English & Foreign Languages	11,568	10,254	9,890	10,207	10,171
History	5,973	5,136	4,575	5,697	6,069
Mass Communications	3,732	3,811	3,923	4,106	4,266
Performing Arts	4,577	4,429	3,395	3,245	3,207
Social Sciences	9,758	8,578	8,106	7,922	8,756
Visual Arts	2,730	2,676	2,476	2,682	2,640
<i>College of Liberal Arts Total</i>	<i>38,338</i>	<i>34,884</i>	<i>32,365</i>	<i>33,859</i>	<i>35,109</i>
Graduate Nursing	366	355	578	607	583
Undergraduate Nursing	4,977	5,477	5,933	6,504	5,863
<i>College of Nursing Total</i>	<i>5,343</i>	<i>5,832</i>	<i>6,511</i>	<i>7,111</i>	<i>6,446</i>
Agriculture*	2,185	1,973	1,992	2,090	3,525
Biological & Envr Sciences*	10,107	8,719	9,845	9,529	
Biology & Health Sciences*					8,704
Chemistry	4,911	4,404	3,743	3,747	3,744
Math, Comp Sci, & Stat	14,854	14,386	13,573	14,110	14,493
Nutrition and Family Studies	2,710	2,847	2,276	1,982	2,303
Physics	2,075	2,150	1,881	1,743	2,276
<i>College of Science Total</i>	<i>36,842</i>	<i>34,479</i>	<i>33,310</i>	<i>33,201</i>	<i>35,045</i>

*In Spring 2009 Environmental Science was moved from Biological & Environmental Sciences to Agriculture.

Historical Fall SCH's by Department (continued)

	<u>2005</u>	<u>2006</u>	<u>2007</u>	<u>2008</u>	<u>2009</u>
General and Basic Studies	1,382	1,351	1,276	98	77
<i>Division of General and Basic Studies Total</i>	<i>1,382</i>	<i>1,351</i>	<i>1,276</i>	<i>98</i>	<i>77</i>
Freshmen Foundations				1,351	1,392
<i>Freshman Foundation Total</i>				<i>1,351</i>	<i>1,392</i>
Military Science				13	26
<i>Military Science Total</i>				<i>13</i>	<i>26</i>
<i>Total</i>	<i>115,620</i>	<i>107,619</i>	<i>104,505</i>	<i>106,166</i>	<i>109,869</i>

Spring 2010 SCH's by Department and Level

	Lower UG	Upper UG	Graduate	Total
Accounting, Fin & Econ	933	3,006	390	4,329
Mgmt, Marketing and Gen Bus	1,113	2,634	336	4,083
<i>College of Business Total</i>	<i>2,046</i>	<i>5,640</i>	<i>726</i>	<i>8,412</i>
Educ Leadership & Instr Tech	794	386	1,185	2,365
Health & Human Performance	2,575	2,385	250	5,210
Psychology	3,219	2,190	658	6,067
Teacher Education	1,134	2,973	879	4,986
Stdnt Tchng & Prof Educ Srvc		639	165	804
<i>College of Education Total</i>	<i>7,722</i>	<i>8,573</i>	<i>3,137</i>	<i>19,432</i>
Engineering	493	1,748	471	2,712
Engineering Technology	253	570	3	826
<i>College of Engineering and Engineering Technology Total</i>	<i>746</i>	<i>2,318</i>	<i>474</i>	<i>3,538</i>
English & Foreign Languages	6,272*	2,552	345	9,169
History	3,642	2,025	15	5,682
Mass Communications	2,551	1,556		4,107
Performing Arts	1,664	1,322	25	3,011
Social Sciences	4,135	4,310	18	8,463
Visual Arts	1,068	1,611	18	2,697
<i>College of Liberal Arts Total</i>	<i>19,332</i>	<i>13,376</i>	<i>421</i>	<i>33,129</i>
Graduate Nursing			553	553
Undergraduate Nursing	518	5,616		6,134
<i>College of Nursing Total</i>	<i>518</i>	<i>5,616</i>	<i>553</i>	<i>6,687</i>
Agriculture	1,355	1,484	331	3,170
Biology & Health Sciences	4,730	3,384	1	8,115
Chemistry	2,141	1,412	166	3,719
Math, Comp Sci, & Stat	8,191**	3,393	569	12,153
Nutrition and Family Studies	870	1,535	60	2,465
Physics	1,043	865	11	1,919
<i>College of Science Total</i>	<i>18,330</i>	<i>12,073</i>	<i>1,138</i>	<i>31,541</i>

* Includes 660 developmental

** Includes 1,048 developmental

Spring 2010 SCH's by Department and Level (continued)

	Lower UG	Upper UG	Graduate	Total
General and Basic Studies	7	60		67
<i>Division of General and Basic Studies Total</i>	<i>7</i>	<i>60</i>		<i>67</i>
Freshmen Foundations	272	2		274
<i>Freshman Foundations Total</i>	<i>272</i>	<i>2</i>		<i>274</i>
Military Science	14	4		18
<i>Military Science Total</i>	<i>14</i>	<i>4</i>		<i>18</i>
<i>University Total</i>	<i>48,987</i>	<i>47,662</i>	<i>6,449</i>	<i>103,098</i>

Student rank classification is used to determine SCH level according to BOR definition.

Historical Spring SCH's by Department

	<u>2006</u>	<u>2007</u>	<u>2008</u>	<u>2009</u>	<u>2010</u>
Accounting, Fin & Econ	4,683	4,368	4,020	3,780	4,329
Mgmt, Marketing and Gen Bus	5,565	5,265	5,142	4,761	4,083
<i>College of Business Total</i>	<i>10,248</i>	<i>9,633</i>	<i>9,162</i>	<i>8,541</i>	<i>8,412</i>
Educ Leadership & Instr Tech	2,567	2,177	2,328	2,004	2,365
Health & Human Performance	4,499	4,975	5,343	5,041	5,210
Psychology	6,183	5,831	5,628	5,923	6,067
Teacher Education	3,976	3,919	3,812	3,816	4,986
Student Tchng & Prof Educ Srvc	681	801	744	567	804
<i>College of Education Total</i>	<i>17,906</i>	<i>17,703</i>	<i>17,855</i>	<i>17,351</i>	<i>19,432</i>
Engineering	2,340	2,991	2,745	2,711	2,712
Engineering Technology	1,128	1,051	1,149	959	826
<i>College of Engineering and Engineering Technology Total</i>	<i>3,468</i>	<i>4,042</i>	<i>3,894</i>	<i>3,670</i>	<i>3,538</i>
English & Foreign Languages	9,301	8,454	8,437	8,564	9,169
History	5,262	4,857	4,641	5,658	5,682
Mass Communications	3,160	3,819	3,976	4,059	4,107
Performing Arts	3,831	3,824	2,965	2,893	3,011
Social Sciences	8,779	8,068	7,822	7,900	8,463
Visual Arts	2,652	2,812	2,616	2,652	2,697
<i>College of Liberal Arts Total</i>	<i>32,985</i>	<i>31,834</i>	<i>30,457</i>	<i>31,726</i>	<i>33,129</i>
Graduate Nursing	342	338	553	522	553
Undergraduate Nursing	4,904	5,890	6,128	6,232	6,134
<i>College of Nursing Total</i>	<i>5,246</i>	<i>6,228</i>	<i>6,681</i>	<i>6,754</i>	<i>6,687</i>
Agriculture*	1,625	1,442	1,651	2,824	3,170
Biological & Envr Sciences*	9,045	8,895	9,208		
Biology & Health Sciences*				7,779	8,115
Chemistry	4,193	4,123	3,495	3,400	3,719
Math, Comp Sci, & Stat	12,437	12,075	11,939	11,762	12,153
Nutrition and Family Studies	2,984	2,790	2,354	2,067	2,465
Physics	2,046	1,918	1,646	1,724	1,919
<i>College of Science Total</i>	<i>32,330</i>	<i>31,243</i>	<i>30,293</i>	<i>29,556</i>	<i>31,541</i>

*In Spring 2009 Environmental Science was moved from Biological & Environmental Sciences to Agriculture.

Historical Spring SCH's by Department (continued)

	<u>2006</u>	<u>2007</u>	<u>2008</u>	<u>2009</u>	<u>2010</u>
General and Basic Studies	228	216	177	98	67
<i>Division of General and Basic Studies Total</i>	228	216	177	98	67
Freshmen Foundations			57	296	274
<i>Freshman Foundation Total</i>			57	296	274
Military Science			12	14	18
<i>Military Science Total</i>			12	14	18
<i>Total</i>	102,411	100,899	98,588	98,006	103,098

Academic Year 2009 -2010 Average Teaching Load by Department

Accounting, Fin & Econ	24.00
Mgmt, Marketing and Gen Bus	24.18
<i>College of Business Total</i>	<i>24.10</i>
Educ Leadership & Instr Tech	25.33
Health & Human Performance	31.14
Psychology	27.59
Teacher Education	27.69
Student Tchng & Prof Educ Srvc	16.50
<i>College of Education Total</i>	<i>27.54</i>
Engineering	24.58
Engineering Technology	27.99
<i>College of Engineering and Engineering Technology Total</i>	<i>25.84</i>
English & Foreign Languages	25.87
History	25.78
Mass Communications	29.30
Performing Arts	28.26
Social Sciences	26.67
Visual Arts	26.09
<i>College of Liberal Arts Total</i>	<i>26.97</i>
Graduate Nursing	36.82
Undergraduate Nursing	33.94
<i>College of Nursing Total</i>	<i>34.03</i>
Agriculture	24.10
Biology & Health Sciences	27.39
Chemistry	25.80
Math, Comp Sci, & Stat	26.68
Nutrition and Family Studies	28.10
Physics	29.67
<i>College of Science Total</i>	<i>26.73</i>
<i>University Total</i>	<i>27.50</i>

Teaching load only reflects teaching load in organized class sections and does not reflect other required work duties such as course grading, curriculum development, accreditation, advising, research, public service and university service.

Financial Aid

	<u>04-05</u>	<u>05-06</u>	<u>06-07</u>	<u>07-08</u>	<u>08-09</u>
Unduplicated Count of Students	10,558	10,393	9,828	9,776	9,969
Undergraduates Receiving Aid	6,907	6,702	6,201	6,400	6,556
% of Undergraduates Receiving Aid	77%	75%	74%	77%	77%
Amount of Undergraduate Aid	\$40,465,577	\$40,892,953	\$37,426,588	\$39,984,240	\$44,056,716
Graduates Receiving Aid	873	794	769	912	834
% of Graduates Receiving Aid	54%	51%	52%	59%	54%
Amount of Graduate Aid	\$5,263,199	\$5,550,945	\$4,545,992	\$5,615,722	\$6,029,461
Students Receiving Federal Aid	5,087	4,697	4,390	4,338	4,442
Amount of Federal Aid	\$29,261,039	\$29,796,044	\$27,491,063	\$27,279,743	\$30,642,301

Fall 2008 Full-Time First-Time UG Students Receiving Aid

<u>Type of Aid</u>	<u>% Receiving Aid</u>	<u>Average Amount</u>
Grants / Scholarships	69%	\$4,532
PELL Grant	29%	\$3,475
Federal Student Loans	36%	\$6,628

Full-Time Average Annual Fees 2009-2010 (Fall and Spring Semesters)

	<u>Undergraduate (15 hours)</u>	<u>Graduate (9 hours)</u>
In-State Undergraduate Tuition & Fees	\$3,587	\$3,976
Out-of-State Undergraduate Tuition & Fees	\$10,259	\$10,648

Student Charges 2009-2010 Academic Year

Room (based on semi-private dorm)	\$2,500
Board (average meal plan)	\$2,174

Revenues
Operating (Unrestricted) Fund

	Actual 2007-2008	%	Actual 2008-2009	%	Budgeted 2009-2010	%
Revenues by Source						
State Funds	\$43,247,275	65.0%	\$43,479,359	65.9%	\$34,128,908	49.5%
Interagency Transfers – ARRA					\$5,749,198	8.4%
Self-Generated Funds	\$23,335,037	35.0%	\$22,526,603	34.1%	\$29,005,188	42.1%
Total Revenues	\$66,582,312	100.0%	\$66,005,962	100.0%	\$68,883,294	100.0%

Expenditures
Operating (Unrestricted) Fund

	Actual 2007-2008	%	Actual 2008-2009	%	Budgeted 2009-2010	%
Expenditures by Function						
Instruction	\$29,240,459	43.9%	\$29,890,505	45.3%	\$30,837,274	44.8%
Research	\$761,025	1.1%	\$869,862	1.3%	\$1,480,982	2.1%
Academic Support	\$6,411,332	9.6%	\$6,640,597	10.0%	\$6,539,100	9.5%
Student Services	\$4,365,230	6.6%	\$4,229,407	6.4%	\$4,216,240	6.1%
Institutional Services	\$7,837,519	11.8%	\$7,767,754	11.8%	\$8,200,203	11.9%
Scholarships/Fellowships	\$3,889,779	5.8%	\$3,941,381	6.0%	\$4,635,000	6.7%
Plant Operations/Maintenance	\$8,767,408	13.2%	\$6,602,292	10.0%	\$7,012,959	10.2%
Transfers out of agency	\$1,919,879	2.9%	\$2,068,656	3.1%	\$2,138,375	3.1%
Athletics	\$3,333,682	5.0%	\$3,748,818	5.7%	\$3,166,557	4.6%
Other	\$56,000	0.1%	\$246,688	0.4%	\$656,604	1.0%
Total Expenditures	\$66,582,312	100.0%	\$66,005,962	100.0%	\$68,883,294	100.0%

	Actual 2007-2008	%	Actual 2008-2009	%	Budgeted 2009-2010	%
Expenditures by Expense Category						
Salaries	\$34,617,280	52.0%	\$37,198,471	56.3%	\$36,599,279	53.13%
Other Compensation	\$567,932	0.8%	\$714,961	1.1%	\$565,067	0.82%
Related Benefits	\$10,858,469	16.3%	\$11,182,209	16.9%	\$11,843,642	17.19%
Travel	\$406,338	0.6%	\$238,270	0.4%	\$133,057	0.19%
Operating Services	\$4,510,722	6.8%	\$3,883,626	5.9%	\$4,595,168	6.67%
Supplies	\$844,056	1.3%	\$712,242	1.1%	\$674,164	0.98%
Professional Services	\$318,699	0.5%	\$302,018	0.5%	\$173,373	0.25%
Other Charges	\$7,621,889	11.4%	\$8,262,568	12.5%	\$8,761,661	12.72%
Interagency Transfers	\$1,919,879	2.9%	\$2,068,656	3.1%	\$2,138,375	3.11%
General Acquisitions	\$2,219,785	3.3%	\$259,492	0.4%	\$19,000	0.03%
Library Acquisitions	\$526,785	.8%	\$307,565	0.5%	\$100,000	0.15%
Major Repairs	\$2,170,478	3.3%	\$875,884	1.3%	\$3,280,508	4.76%
Total Expenditures	\$66,582,312	100.0%	\$66,005,862	100.0%	\$68,883,294	100.0%

Faculty/Staff

Fall 2009 Full-Time Faculty by Rank

	Tenured	On tenure track	Not on tenure track	Total	Percent
Professors	64		1	65	21.1%
Associate Professors	49	1	1	51	16.6%
Assistant Professors	51	79	11	141	45.7%
Instructors			51	51	16.6%
Total	164	80	64	308	100.0%

Fall 2009 Full-Time Faculty by Highest Degree

	Tenured	On tenure track	Not on tenure track	Total	Percent
Bachelors			2	2	.7%
Masters	39	18	46	103	33.4%
Terminal Masters	8	4	7	19	6.2%
Doctorate	117	58	9	184	59.7%
Total	164	80	64	308	100.0%

Fall 2009 Full-Time Faculty by Race and Gender

	Men	Women	Total	Percent
Asian/Pacific Islander	23	3	26	8.5%
Black, non-Hispanic	4	11	15	4.9%
Foreign		1	1	0.3%
Hispanic	1		1	0.3%
White, non-Hispanic	142	123	265	86.0%
Total	170	138	308	100.0%

Full-Time Equivalent Faculty

09-10	343.1
08-09	362.3
07-08	368.7
06-07	339.3
05-06	343.0
04-05	343.2

Student to Faculty Ratio*

Fall 2009	21 to 1
Fall 2008	19 to 1
Fall 2007	20 to 1
Fall 2006	21 to 1
Fall 2005	22 to 1

* (Full-Time students + 1/3 Part-Time students) / (Full-Time faculty + 1/3 Part-Time faculty)

Fall 2009 Classes taught by Faculty Type

	Dev	Lower Level	Upper Level	Graduate	Total
Full-Time Faculty		878	688	236	1,802
Part-Time Faculty	76	146	83	11	316
Total	76	1,024	771	247	2,118

Fall 2009 Employees by Occupational Activity

	Full-Time	Part-Time	Total	Percent
Primarily Instruction	308	102	410	45.8%
Executive/administrative/managerial	51		51	5.7%
Other professionals (support/service)	169	12	181	20.2%
Technical and paraprofessionals	47	3	50	5.6%
Clerical and secretarial	102	4	106	11.8%
Skilled crafts	21	1	22	2.4%
Service/Maintenance	73	3	76	8.5%
Total	771	125	896	100.0%

Fall 2009 Employees by Race and Gender

	Men	Women	Total	Percent
American Indian/Alaska Native	1	2	3	0.3%
Asian/Pacific Islander	26	7	33	3.7%
Black, non-Hispanic	53	79	132	14.7%
Foreign, Non-Resident	1	2	3	0.3%
Hispanic	3	1	4	0.5%
White, non-Hispanic	304	417	721	80.5%
Total	388	508	896	100.0%

Facilities

	Owned	Leased	Total
Land Holdings	500.95 Acres	265.45 Acres	766.40 Acres
Building Gross Square Footage	1,407,857	344,096	1,751,953
Building Net Assignable Square Footage	983,420	265,289	1,248,709

Net Assignable Space by Allocation Category

	Square Feet	% Total
Academic	500,539	55.1%
Administrative	63,114	6.9%
Athletics	51,643	5.7%
Auxiliary*	202,815	22.3%
Residential**	91,194	10.0%
Total	909,305	100.0%

* Does not include 265,289 square feet for Burton Coliseum which is leased from Calcasieu Parish Police Jury and is used for basketball games and graduation twice a year.

** Does not include 74,115 square feet for Burton Dorm which is currently closed.