





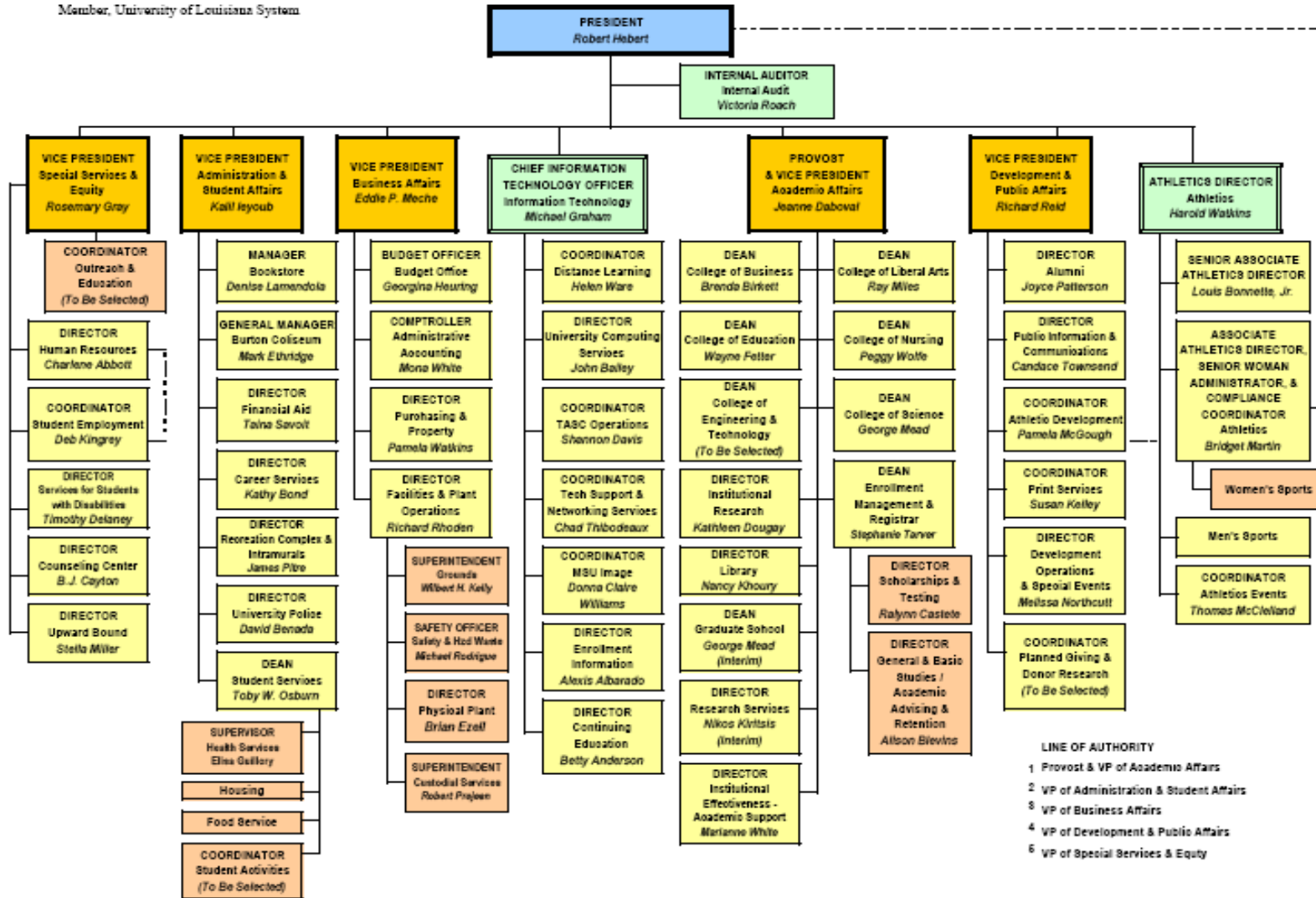








**ORGANIZATIONAL CHART FOR McNEESE STATE UNIVERSITY**  
Member, University of Louisiana System



- LINE OF AUTHORITY**
- 1 Provost & VP of Academic Affairs
  - 2 VP of Administration & Student Affairs
  - 3 VP of Business Affairs
  - 4 VP of Development & Public Affairs
  - 5 VP of Special Services & Equity

Updated: July 19, 2006

## Inventory of Degree Programs

### General and Basic Studies

General Studies.....	A.G.S.
General Studies.....	B.G.S.

### College of Business

Accounting.....	B.S.
Business Administration.....	M.B.A.
Finance.....	B.S.
General Business Administration.....	B.S.
Management.....	B.S.
Marketing.....	B.S.

### Burton College of Education

Business Education—Grades 6-12.....	B.S.
Curriculum and Instruction .....	M.Ed
Early Childhood Education.....	A.S.
Early Childhood Education—Grades PK-3.....	B.S.
Education.....	M.Ed.
Educational Leadership.....	M.Ed.
Educational Leadership.....	Ed.S.
Educational Technology Leadership.....	M.Ed.
Elementary Education—Grades 1-5.....	B.S.
Elementary Education—Grades 1-5.....	M.A.T.
Health and Physical Education—Grades K-12.....	B.S.
Health and Human Performance, General .....	B.S.
Health and Human Performance .....	M.S.
Instructional Technology.....	M.S.
Psychology.....	B.S.
Psychology.....	M.A.
School Counseling.....	M.Ed.
Secondary Education—Grades 6-12.....	M.A.T.
Special Education, General.....	B.A.
Special Education Mild/Moderate—Grades 1-12.....	M.A.T.

### College of Engineering & Technology

Engineering.....	B.S.
Engineering.....	M. Eng.
Engineering Technology.....	A.S.
Engineering Technology.....	B.S.



### College of Liberal Arts

Art.....	B.A.
Art Education—Grades K-12.....	B.A.
Creative Writing.....	M.F.A.
Criminal Justice.....	B.S.
English.....	B.A.
English.....	M.A.
English Education—Grades 6-12.....	B.A.
Foreign Languages Education—Grades 6-12.....	B.A.
French.....	B.A.
Government.....	B.A.
History.....	B.A.
Liberal Studies.....	B.A.
Mass Communication.....	B.S.
Music Education— Instrumental Grades K-12 .....	B.M.Ed.
Music Education—Vocal Grades K-12 .....	B.M.Ed.
Music Education.....	M.M.Ed.
Music Performance.....	B.M.
Paralegal Studies.....	A.A.
Social Studies Education—Grades 6-12.....	B.A.
Sociology.....	B.A.
Spanish.....	B.A.
Speech.....	B.A.
Speech Education—Grades 6-12.....	B.S.
Theatre Arts.....	B.A.

### College of Nursing

Nursing.....	A.D.N.
Nursing.....	B.S.N.
Nursing.....	M.S.N.

### College of Science

Agricultural Education—Grades 6-12.....	B.S.
Agricultural Sciences.....	B.S.
Biological Science.....	B.S.
Biology Education—Grades 6-12.....	B.S.
Chemistry.....	B.S.
Chemistry Education—Grades 6-12.....	B.S.
Clinical Laboratory Science.....	B.S.
Computer Information Technology.....	A.S.
Computer Science.....	B.S.
Environmental and Chemical Sciences.....	M.S.
Environmental Science.....	B.S.
Environmental Science Education—Grades 6-12.....	B.S.
Family & Consumer Sciences.....	B.S.
Family & Consumer Sciences Education—Grades 6-12.....	B.S.
Mathematics Education—Grades 6-12.....	B.S.
Mathematical Sciences.....	M.S.
Mathematics.....	B.S.
Radiologic Technology.....	B.S.
Physics.....	B.S.
Wildlife Management.....	B.S.

**Enrollment  
Fall 2006**

**Fall 2006 Enrollment by Level**

	<b><u>Enrollment</u></b>	<b><u>Percent</u></b>
Undergraduate	7,336	87.9%
Graduate	1,007	12.1%
<b><i>Total</i></b>	<b><i>8,343</i></b>	<b><i>100.0%</i></b>

**Fall 2006 Full-Time Equivalent Enrollment by Level**

	<b><u>Enrollment</u></b>	<b><u>Percent</u></b>
Undergraduate (12 hours)	8,404.6	91.7%
Graduate (9 hours)	764.9	8.3%
<b><i>Total</i></b>	<b><i>9,169.5</i></b>	<b><i>100.0%</i></b>

**Fall 2006 Enrollment by Rank**

	<b><u>Enrollment</u></b>	<b><u>Percent</u></b>
Early Admissions	220	2.6%
Freshman	2,425	29.1%
Sophomore	1,403	16.8%
Junior	1,345	16.1%
Senior	1,932	23.2%
Masters Candidate	773	9.3%
Education Specialist	13	.2%
Special Graduate	221	2.6%
Non-Credit/Non-Degree	11	.1%
<b><i>Total</i></b>	<b><i>8,343</i></b>	<b><i>100.0%</i></b>

### Fall 2006 Enrollment by Status

	<u>Undergraduate</u>	<u>Graduate</u>	<u>Total</u>	<u>Percent</u>
Full-Time	6,077	360	6,437	77.2%
Part-Time	1,259	647	1,906	22.8%
<b>Total</b>	<b>7,336</b>	<b>1,007</b>	<b>8,343</b>	<b>100.0%</b>

### Fall 2006 Enrollment by Gender

	<u>Undergraduate</u>	<u>Graduate</u>	<u>Total</u>	<u>Percent</u>
Female	4,426	668	5,094	61.1%
Male	2,910	339	3,249	38.9%
<b>Total</b>	<b>7,336</b>	<b>1,007</b>	<b>8,343</b>	<b>100.0%</b>

### Fall 2006 Enrollment by Ethnicity

	<u>Undergraduate</u>	<u>Graduate</u>	<u>Total</u>	<u>Percent</u>
Amer Indian/Alaskan	52	4	56	.7%
Asian/Pacific Islander	57	10	67	.8%
Black	1,349	156	1,505	18.0%
Foreign	159	145	304	3.7%
Hispanic	95	16	111	1.3%
Other / Not specified	35	5	40	.5%
White	5,589	671	6,260	75.0%
<b>Total</b>	<b>7,336</b>	<b>1,007</b>	<b>8,343</b>	<b>100.0%</b>

### Fall 2006 Enrollment by Current Entry Status

	<u>Undergraduate</u>	<u>Graduate</u>	<u>Total</u>	<u>Percent</u>
Early Admissions	220	0	220	2.6%
Continuing	5,152	651	5,803	69.6%
First-Time Freshman	1,319	0	1,319	15.8%
New Graduate	0	224	224	2.7%
Re-Entry	324	115	439	5.3%
Transfer	321	17	338	4.0%
<b>Total</b>	<b>7,336</b>	<b>1,007</b>	<b>8,343</b>	<b>100.0%</b>























### Fall 2006 Enrollment by Department and Major (continued)

<u>College/Department</u>	<u>Major</u>	<u>Undergraduate</u>	<u>Graduate</u>	<u>Total</u>
Teacher Education	Add-on Teacher Certification		42	42
	Alt Certification – Grades 1-12 Mild/Moderate Sp Ed		14	14
	Alt Certification – Grades K-12 Health & Physical Ed		8	8
	Alt Certification – Grades 1-5		15	15
	Alt Certification – Grade 6-12		11	11
	Alt Certification – Grades PK-3		4	4
	Certification – TEDU		2	2
	Curriculum and Instruction		17	17
	Early Childhood Education	27		27
	Early Childhood Education – Grades PK - 3	219		219
	Education		30	30
	Elementary Education	29		29
	Elementary Education – Grades 1–5	259	76	335
	Nondegree		24	24
	Secondary Education	15		15
	Secondary Education Grades 6-12		89	89
	Special Education, Mild/Mod Gr 1-12		40	40
	Special Education, General	47		47
<i>Department Total</i>		596	372	968
<b>College of Education Total</b>		<b>1,218</b>	<b>599</b>	<b>1,817</b>
<b>Engineering &amp; Technology</b>				
Engineering	Engineering	361	78	439
	Nondegree		2	2
<i>Department Total</i>		361	80	441
Technology	Engineering Technology	168		168
<i>Department Total</i>		168		168
<b>College of Engineering &amp; Technology Total</b>		<b>529</b>	<b>80</b>	<b>609</b>
<b>General &amp; Basic Studies</b>				
Basic Studies	Basic Studies	521		521
	General Studies	496		496
<i>Department Total</i>		1,017		1,017
<b>General &amp; Basic Studies Total</b>		<b>1,017</b>		<b>1,017</b>

### Fall 2006 Enrollment by Department and Major (continued)

<u>College/Department</u>	<u>Major</u>	<u>Undergraduate</u>	<u>Graduate</u>	<u>Total</u>
<b>Liberal Arts</b>				
English & Foreign Languages	Creative Writing		16	16
	English	55	12	67
	English Education Grades 6 – 12	54		54
	Foreign Language Education Grades 6-12	11		11
	French	3		3
	Nondegree		4	4
	Spanish	12		12
<i>Department Total</i>		<i>135</i>	<i>32</i>	<i>167</i>
History	General Studies	5		5
	History	45		45
	Liberal Studies	27		27
	Nondegree		2	2
	Social Studies Education Grades 6 – 12	52		52
<i>Department Total</i>		<i>129</i>	<i>2</i>	<i>131</i>
Mass Communication	Mass Communication	175		175
	Nondegree		1	1
	Speech	10		10
	Speech Education Grades 6-12	1		1
<i>Department Total</i>		<i>186</i>	<i>1</i>	<i>187</i>
Performing Arts	Music Education	24	6	30
	Music Educ–Instrumental, Grades K–12	32		32
	Music Education – Vocal, Grades 6 – 12	9		9
	Nondegree		4	4
	Performance	31		31
	Theatre Arts	14		14
<i>Department Total</i>		<i>110</i>	<i>10</i>	<i>120</i>
Social Sciences	Criminal Justice	193		193
	General Studies	2		2
	Government	46		46
	Paralegal Studies	37		37
	Sociology	91		91
<i>Department Total</i>		<i>369</i>		<i>369</i>

### Fall 2006 Enrollment by Department and Major (continued)

<u>College/Department</u>	<u>Major</u>	<u>Undergraduate</u>	<u>Graduate</u>	<u>Total</u>
Visual Arts	Alt Certification – Grades K-12 Art Ed		5	5
	Art	135		135
	Art Education	19		19
	Art Education – Grades K – 12	17		17
	General Studies	2		2
	Nondegree		3	3
	Undeclared	1		1
<i>Department Total</i>		<i>174</i>	<i>8</i>	<i>182</i>
<b>College of Liberal Arts Total</b>				
		<b><i>1,103</i></b>	<b><i>53</i></b>	<b><i>1,156</i></b>
<b>Nursing</b>				
Graduate Nursing	Nondegree		11	11
	Nursing		58	58
<i>Department Total</i>			<i>69</i>	<i>69</i>
Undergraduate Nursing	Nursing	1,133		1,133
<i>Department Total</i>		<i>1,133</i>		<i>1,133</i>
<b>College of Nursing Total</b>				
		<b><i>1,133</i></b>	<b><i>69</i></b>	<b><i>1,202</i></b>
<b>Science</b>				
Agriculture	Agricultural Education – Grades 6 – 12	6		6
	Agricultural Sciences	167		167
	Environmental & Chemical Sciences		7	7
	Wildlife Management	41		41
<i>Department Total</i>		<i>214</i>	<i>7</i>	<i>221</i>
Biological & Envr Sciences	Biological Science	290		290
	Biology Education – Grades 6 – 12	15		15
	Clinical Laboratory Science	59		59
	Environmental & Chemical Sciences		9	9
	Environmental Science	17		17
	Environmental Science Education Grades 6-12	3		3
	Nondegree		4	4
	Radiologic Technology	235		235
<i>Department Total</i>		<i>619</i>	<i>13</i>	<i>632</i>



### Fall 2006 Enrollment by Department and Major (continued)

<u>College/Department</u>	<u>Major</u>	<u>Undergraduate</u>	<u>Graduate</u>	<u>Total</u>
Chemistry	Chemistry	96		96
	Chemistry Education – Grades 6-12	6		6
	Environmental & Chemical Sciences		19	19
	Nondegree		4	4
<i>Department Total</i>		<i>102</i>	<i>23</i>	<i>125</i>
Family & Consumer Sciences	Dietetic Certification		8	8
	Family & Consumer Sciences Education Grades 6-12	7		7
	Family & Consumer Sciences	135		135
	Family/Consumer Sciences Education	3		3
	Nondegree		1	1
<i>Department Total</i>		<i>145</i>	<i>9</i>	<i>154</i>
Math, Computer Sci and Stat	Computer Information Tech	26		26
	Computer Science	78		78
	Mathematical Sciences		38	38
	Mathematics	16		16
	Mathematics Education – Grades 6-12	44		44
	Nondegree		15	15
<i>Department Total</i>		<i>164</i>	<i>53</i>	<i>217</i>
Physics	Physics	11		11
<i>Department Total</i>		<i>11</i>		<i>11</i>
<b>College of Science Total</b>		<b>1,255</b>	<b>105</b>	<b>1,360</b>
<b>University Total</b>		<b>7,336</b>	<b>1,007</b>	<b>8,343</b>

## Historical Enrollment Data

<u>Fall</u>	<u>Under-graduate</u>	<u>Graduate</u>	<u>Total</u>		<u>Fall</u>	<u>Under-graduate</u>	<u>Graduate</u>	<u>Total</u>
2006	7,336	1,007	8,343		1970	4,844	750	5,594
2005	7,847	1,145	8,992		1969	4,568	582	5,150
2004	7,724	1,060	8,784		1968	4,618	472	5,090
2003	7,330	1,117	8,447		1967	4,234	308	4,542
2002	7,010	1,019	8,029		1966	3,983	333	4,316
2001	6,845	935	7,780		1965	3,512	295	3,807
2000	6,731	901	7,632		1964	3,149	211	3,360
1999	6,865	1,014	7,879		1963	2,663	164	2,827
1998	6,978	1,017	7,995		1962	2,999	132	3,131
1997	7,050	1,087	8,137		1961	2,848	98	2,946
1996	7,063	1,024	8,087		1960	2,697		2,697
1995	7,381	1,063	8,444		1959	2,502		2,502
1994	7,658	1,071	8,729		1958	2,444		2,444
1993	7,347	1,057	8,404		1957	2,024		2,024
1992	7,316	1,158	8,474		1956	1,916		1,916
1991	6,818	1,013	7,831		1955	1,661		1,661
1990	6,662	1,062	7,724		1954	1,367		1,367
1989	6,557	1,022	7,579		1953	1,192		1,192
1988	6,383	1,040	7,423		1952	993		993
1987	6,457	1,036	7,493		1951	905		905
1986	6,430	950	7,380		1950	501		501
1985	6,648	1,176	7,824		1949	397		397
1984	6,645	1,336	7,981		1948	575		575
1983	6,491	1,535	8,026		1947	615		615
1982	5,888	1,463	7,351		1946	640		640
1981	5,461	1,556	7,017		1945	233		233
1980	4,700	691	5,391		1944	131		131
1979	4,435	721	5,156		1943	146		146
1978	4,626	750	5,376		1942	169		169
1977	4,883	642	5,525		1941	223		223
1976	5,048	758	5,806		1940	242		242
1975	5,058	955	6,013		1939	254		254
1974	4,841	845	5,686					
1973	4,922	915	5,837					
1972	5,226	959	6,185					
1971	5,067	958	6,025					
1970	4,844	750	5,594					

## First-Time Freshman

### Fall 2006 First-Time Freshman by Status

	<b><u>Total</u></b>	<b><u>Percent</u></b>
Full-Time	1,276	96.7%
Part-Time	43	3.3%
<b><i>Total</i></b>	<b><i>1,319</i></b>	<b><i>100.0</i></b>

### Fall 2006 First-Time Freshman by Gender

	<b><u>Full-Time</u></b>	<b><u>Part-Time</u></b>	<b><u>Total</u></b>	<b><u>Percent</u></b>
Female	743	24	767	58.2%
Male	533	19	552	41.8%
<b><i>Total</i></b>	<b><i>1,276</i></b>	<b><i>43</i></b>	<b><i>1,319</i></b>	<b><i>100.0%</i></b>

### Fall 2006 First-Time Freshman by Ethnicity

	<b><u>Full-Time</u></b>	<b><u>Part-Time</u></b>	<b><u>Total</u></b>	<b><u>Percent</u></b>
Amer Indian/Alaskan	8		8	.6%
Asian/Pacific Islander	13	1	14	1.1%
Black	206	10	216	16.4%
Foreign	31		31	2.3%
Hispanic	16		16	1.2%
Other	5		5	.4%
White	997	32	1,029	78.0%
<b><i>Total</i></b>	<b><i>1,276</i></b>	<b><i>43</i></b>	<b><i>1,319</i></b>	<b><i>100.0%</i></b>

### Fall 2006 First-Time Freshman Admissions

	<b><u>Men</u></b>	<b><u>Women</u></b>	<b><u>Total</u></b>
Applied	884	1,333	2,217
Accepted	702	1,040	1,742
Enrolled Full Time	533	743	1,276
Enrolled Part Time	17	23	40

## Fall 2006 First-Time Freshman by Parish, State and Country

Parish	Enrollment	State	Enrollment	Country	Enrollment
Acadia	23	Colorado	1	Cambodia	1
Allen	64	Georgia	1	Canada	2
Ascension	2	Illinois	1	China	1
Beauregard	93	Maryland	1	Colombia	1
Bossier	2	Michigan	1	Croatia	1
Caddo	3	Mississippi	1	Ecuador	2
Calcasieu	755	New Jersey	3	Honduras	2
Cameron	38	New York	1	Iceland	1
Concordia	2	Ohio	2	India	2
DeSoto	2	Tennessee	1	Mexico	2
East Baton Rouge	6	Texas	70	Nepal	3
Evangeline	13			Nigeria	1
Grant	1			Peru	2
Iberia	2			Russia	2
Jackson	1			Sweden	1
Jefferson	5			Taiwan	1
Jefferson Davis	85			Thailand	3
Lafayette	13			Trinidad and Tobago	1
Lafourche	1			Turkey	3
Livingston	2				
Morehouse	1				
Orleans	5				
Pointe Coupee	2				
Rapides	5				
Richland	1				
Sabine	5				
St Charles	1				
St James	1				
St Landry	12				
St Martin	2				
St Mary	4				
St Tammany	1				
Tangipahoa	1				
Vermilion	13				
Vernon	34				
Washington	1				
West Feliciana	2				
Total Louisiana	1,204	Total Out of State	83	Total Foreign	32
% of Total FTF	91.3%	% of Total FTF	6.3%	% of Total FTF	2.4%
Number of Parishes	37	Number of States (Other than Louisiana)	11	Number of Countries (Other than USA)	19
Five Parish Total	1,035				

### Fall 2006 First-Time Freshman Enrollment by College

	<b>Total</b>	<b>Percent</b>
Business	134	10.2%
Continuing Education	3	.2%
Education	164	12.4%
Engineering & Technology	105	8.0%
General & Basic Studies	272	20.6%
Liberal Arts	153	11.6%
Nursing	212	16.1%
Science	276	20.9%
<b>Total</b>	<b>1,319</b>	<b>100.0%</b>

### Historical Fall First-Time Freshman Enrollment by College

	<b>2002</b>	<b>2003</b>	<b>2004</b>	<b>2005</b>	<b>2006</b>
Business	151	180	208	108	134
Continuing Education	18	7	9		3
Education	215	188	210	172	164
Engineering & Technology	98	113	107	111	105
General & Basic Studies	313	361	357	337	272
Liberal Arts	197	206	225	147	153
Nursing	157	211	268	213	212
Science	269	304	289	281	276
<b>Total</b>	<b>1,418</b>	<b>1,570</b>	<b>1,673</b>	<b>1,369</b>	<b>1,319</b>

## First-Time Freshman by College and Department

<b>College</b>	<b>Department</b>	<b>Total</b>
Business	Accounting, Fin & Economics	39
	Mgmt, Marketing, & Gen Bus	95
<b><i>College of Business Total</i></b>		<b>134</b>
Continuing Education	Continuing Education	3
<b><i>Continuing Education Total</i></b>		<b>3</b>
Education	Educ Leadership & Instr Tech	1
	Health & Human Performance	51
	Psychology	52
	Teacher Education	60
<b><i>College of Education Total</i></b>		<b>164</b>
Engineering & Technology	Engineering	85
	Technology	20
<b><i>College of Engineering &amp; Technology Total</i></b>		<b>105</b>
General & Basic Studies	Basic Studies	272
<b><i>General &amp; Basic Studies Total</i></b>		<b>272</b>
Liberal Arts	English & Foreign Languages	18
	History	16
	Mass Communication	28
	Performing Arts	26
	Social Sciences	42
	Visual Arts	23
<b><i>College of Liberal Arts Total</i></b>		<b>153</b>
Nursing	Undergraduate Nursing	212
<b><i>College of Nursing Total</i></b>		<b>212</b>
Science	Agriculture	36
	Biological & Envr Sciences	168
	Chemistry	16
	Family & Consumer Sciences	15
	Math, Computer Sci and Stat	36
	Physics	5
<b><i>College of Science Total</i></b>		<b>276</b>
<b>University Total</b>		<b>1,319</b>

## Historical First-Time Freshman Enrollment by College and Department

<b>College</b>	<b>Department Name</b>	<b>2002</b>	<b>2003</b>	<b>2004</b>	<b>2005</b>	<b>2006</b>
Business	Accounting, Fin, & Economics	49	49	52	32	39
	Mgmt, Marketing and Gen Bus	102	131	156	76	95
<b>College of Business Total</b>		<b>151</b>	<b>180</b>	<b>208</b>	<b>108</b>	<b>134</b>
Continuing Education	Continuing Education	18	7	9		3
<b>Continuing Education Total</b>		<b>18</b>	<b>7</b>	<b>9</b>		<b>3</b>
Education	Educ Leadership & Instr Tech		1	1	1	1
	Health & Human Performance	57	59	72	59	51
	Psychology	33	51	50	39	52
	Teacher Education	125	77	87	73	60
<b>College of Education Total</b>		<b>215</b>	<b>188</b>	<b>210</b>	<b>172</b>	<b>164</b>
Engineering & Technology	Engineering	82	104	93	92	85
	Technology	16	9	14	19	20
<b>College of Engineering &amp; Technology Total</b>		<b>98</b>	<b>113</b>	<b>107</b>	<b>111</b>	<b>105</b>
General & Basic Studies	Basic Studies	313	361	357	337	272
<b>General &amp; Basic Studies Total</b>		<b>313</b>	<b>361</b>	<b>357</b>	<b>337</b>	<b>272</b>
Liberal Arts	English & Foreign Languages	8	12	21	22	18
	History	29	22	17	13	16
	Mass Communication*	45	40	39	26	28
	Music*	29	29			
	Performing Arts*			32	21	26
	Social Sciences	58	68	83	47	42
	Speech and Theatre Arts*	8	7			
	Visual Arts	20	28	33	18	23
<b>College of Liberal Arts Total</b>		<b>197</b>	<b>206</b>	<b>225</b>	<b>147</b>	<b>153</b>
Nursing	Undergraduate Nursing	157	211	268	213	212
<b>College of Nursing Total</b>		<b>157</b>	<b>211</b>	<b>268</b>	<b>213</b>	<b>212</b>
Science	Agriculture	43	49	47	42	36
	Biological & Envr Sciences	139	183	143	150	168
	Chemistry	10	11	21	29	16
	Family & Consumer Sciences	28	12	27	20	15
	Math, Computer Science, & Stat	47	47	48	38	36
	Physics	2	2	3	2	5
<b>College of Science Total</b>		<b>269</b>	<b>304</b>	<b>289</b>	<b>281</b>	<b>276</b>
<b>University Total</b>		<b>1,418</b>	<b>1,570</b>	<b>1,673</b>	<b>1,369</b>	<b>1,319</b>

\*In the Fall 2004 Speech was combined with Mass Communications;  
Music and Theatre Arts were combined into Performing Arts.

## First-Time Freshman by Department and Major

<u>College/Department</u>	<u>Major</u>	<u>Total</u>
<b>Business</b>		
Accounting, Fin & Economics	Accounting	35
	Finance	4
<i>Department Total</i>		<b>39</b>
Mgmt, Marketing, & Gen Bus	Gen Business Administration	57
	Management	24
	Marketing	14
<i>Department Total</i>		<b>95</b>
<b>College of Business Total</b>		<b>134</b>
<b>Continuing Education</b>		
Continuing Education	EASE Program	3
<i>Department Total</i>		<b>3</b>
<b>Continuing Education Total</b>		<b>3</b>
<b>Education</b>		
Educ Leadership & Instr Tech	Business Education – Grades 6-12	1
<i>Department Total</i>		<b>1</b>
Health & Human Performance	Health & Human Performance, General	28
	Health & Physical Education, Grades K–12	23
<i>Department Total</i>		<b>51</b>
Psychology	Psychology	52
<i>Department Total</i>		<b>52</b>
Teacher Education	Early Childhood Education–Grades PK–3	14
	Elementary Education – Grades 1–5	43
	Special Education, General	3
<i>Department Total</i>		<b>60</b>
<b>College of Education Total</b>		<b>164</b>
<b>Engineering &amp; Technology</b>		
Engineering	Engineering	85
<i>Department Total</i>		<b>85</b>
Technology	Engineering Technology	20
<i>Department Total</i>		<b>20</b>
<b>College of Engineering &amp; Technology Total</b>		<b>105</b>



## First-Time Freshman by Department and Major (continued)

<u>College/Department</u>	<u>Major</u>	<u>Total</u>
<b>General &amp; Basic Studies</b>		
Basic Studies	Basic Studies	242
	General Studies	30
<i>Department Total</i>		<b>272</b>
<b>General &amp; Basic Studies Total</b>		
		<b>272</b>
<b>Liberal Arts</b>		
English & Foreign Languages	English	6
	English Education Grades 6 – 12	11
	Spanish	1
<i>Department Total</i>		<b>18</b>
History	General Studies	1
	History	4
	Liberal Studies	3
	Social Studies Education Grades 6 – 12	8
<i>Department Total</i>		<b>16</b>
Mass Communication	Mass Communication	27
	Speech	1
<i>Department Total</i>		<b>28</b>
Performing Arts	Music Educ–Instrumental Grades K–12	17
	Music Education – Vocal Grades 6 – 12	7
	Performance	2
<i>Department Total</i>		<b>26</b>
Social Sciences	Criminal Justice	17
	Government	13
	Paralegal Studies	4
	Sociology	8
<i>Department Total</i>		<b>42</b>
Visual Arts	Art	20
	Art Education – Grades K – 12	3
<i>Department Total</i>		<b>23</b>
<b>College of Liberal Arts Total</b>		<b>153</b>
<b>Nursing</b>		
Undergraduate Nursing	Nursing	212
<i>Department Total</i>		<b>212</b>
<b>College of Nursing Total</b>		<b>212</b>

### First-Time Freshman by Department and Major (continued)

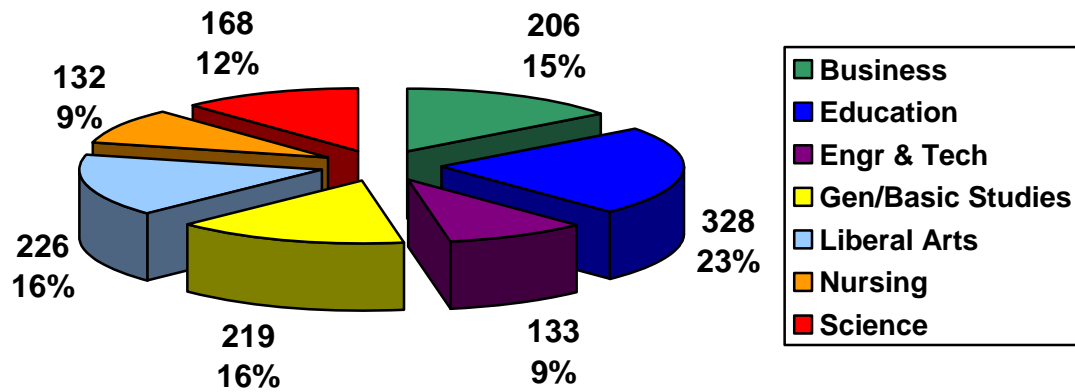
<u>College/Department</u>	<u>Major</u>	<u>Total</u>
<b>Science</b>		
Agriculture	Agricultural Education – Grades 6 – 12	1
	Agricultural Sciences	29
	Wildlife Management	6
<i>Department Total</i>		36
Biological & Envr Sciences	Biological Science	103
	Biology Education – Grades 6 – 12	2
	Clinical Laboratory Science	4
	Environmental Science	3
	Radiologic Technology	56
<i>Department Total</i>		168
Chemistry	Chemistry	16
<i>Department Total</i>		16
Family & Consumer Sciences	Family & Consumer Sciences Education Grades 6-12	1
	Family & Consumer Sciences	14
<i>Department Total</i>		15
Math, Computer Sci and Stat	Computer Information Tech	2
	Computer Science	22
	Mathematics	6
	Mathematics Education – Grades 6-12	6
<i>Department Total</i>		36
Physics	Physics	5
<i>Department Total</i>		5
<b>College of Science Total</b>		<b>276</b>
<b>University Total</b>		<b>1,319</b>

**Degrees Conferred**  
**July 1, 2005 – June 30, 2006**

**Degrees Conferred by College and Level**

	<u>Associate</u>	<u>Bachelor's</u>	<u>Master's</u>	<u>Education Specialist</u>	<u>Total</u>
Business		187	19		206
Education	8	183	134	3	328
Engineering & Technology	28	60	45		133
General & Basic Studies	33	186			219
Liberal Arts	15	193	18		226
Nursing	27	96	9		132
Science	9	136	23		168
<b>Total</b>	<b>120</b>	<b>1,041</b>	<b>248</b>	<b>3</b>	<b>1,412</b>

**Degrees Conferred by College**



### Historical Degrees Conferred by College

	<b><u>01-02</u></b>	<b><u>02-03</u></b>	<b><u>03-04</u></b>	<b><u>04-05</u></b>	<b><u>05-06</u></b>
Business	186	197	235	237	206
Education	329	339	303	299	328
Engineering & Technology	111	113	135	87	133
General & Basic Studies		4	121	223	219
Liberal Arts	273	294	223	256	226
Nursing	91	76	112	88	132
Science	162	195	193	167	168
<b>Total</b>	<b>1,152</b>	<b>1,218</b>	<b>1,322</b>	<b>1,357</b>	<b>1,412</b>

### Historical Degrees Conferred by Level

	<b><u>01-02</u></b>	<b><u>02-03</u></b>	<b><u>03-04</u></b>	<b><u>04-05</u></b>	<b><u>05-06</u></b>
Associate	171	159	179	124	120
Bachelor	785	865	900	991	1,041
Master	187	182	227	235	248
Education Specialist	9	12	16	7	3
<b>Total</b>	<b>1,152</b>	<b>1,218</b>	<b>1,322</b>	<b>1,357</b>	<b>1,412</b>

### Top 10 Bachelor's Degrees Conferred 2005–2006

	<u>Number of Degrees</u>
BGS General Studies	189
BSN Nursing	96
BS Accounting	54
BS Management	53
BS Psychology	45
BS Criminal Justice	45
BS Engineering	45
BS Mass Communications	38
BA Elementary Education	37
BS Family/Consumer Sciences / BS Marketing	34

### Top 5 Associate Degrees Conferred 2005–2006

	<u>Number of Degrees</u>
AGS General Studies	38
ADN Nursing	27
AS Engineering Technology	26
AA Paralegal Studies	10
AS Computer Information Technology	9

### Top 5 Master's Degrees Conferred 2005–2006

	<u>Number of Degrees</u>
MEng Engineering	45
MEd Educational Technology	35
MEd Administration and Supervision	34
MEd Education	22
MBA Business Administration	19

**Student Credit Hours (SCH)  
Fall 2006 by Department and Level**

	<b>Lower UG</b>	<b>Upper UG</b>	<b>Graduate</b>	<b>Total</b>
Accounting, Fin & Econ	1,197	2,871	240	4,308
Agriculture	924	1,006	43	1,973
Biological & Envr Sciences	5,120	3,421	178	8,719
Basic Studies	1,324	27	0	1,351
Chemistry	2,805	1,437	162	4,404
Educ Leadership & Instr Tech	775	407	1,212	2,394
English & Foreign Languages	7,623*	2,298	333	10,254
Engineering	487	1,286	694	2,467
Family & Consumer Science	1,071	1,686	90	2,847
Health & Human Performance	2,079	2,240	324	4,643
History	3,711	1,410	15	5,136
Math, Comp Sci, & Stat	10,354**	3,330	702	14,386
Mass Communications	2,170	1,635	6	3,811
Mgmt, Marketing and Gen Bus	1,164	3,981	420	5,565
Graduate Nursing	0	0	355	355
Performing Arts	2,712	1,650	67	4,429
Physics	1,270	849	31	2,150
Psychology	3,396	1,818	655	5,869
Social Sciences	4,290	4,252	36	8,578
Technology	476	661	6	1,143
Teacher Education	879	2,058	1,021	3,958
TEDU Admissions/Field Exper	0	564	162	726
Undergraduate Nursing	212	5,205	60	5,477
Visual Arts	1,173	1,431	72	2,676
<b>Total</b>	<b>55,212</b>	<b>45,523</b>	<b>6,884</b>	<b>107,619</b>

\* Includes 996 developmental

\*\* Includes 1,612 developmental

## Historical Fall SCH's by Department

	<b>2002</b>	<b>2003</b>	<b>2004</b>	<b>2005</b>	<b>2006</b>
Accounting, Fin & Econ	4,689	5,115	4,818	4,443	4,308
Agriculture	1590	1,980	2,212	2,185	1,973
Biological & Envr Sciences	8436	8,724	9,718	10,107	8,719
Basic Studies	1381	1,554	1,670	1,382	1,351
Chemistry	3390	4,220	4,132	4,911	4,404
Educ Leadership & Instr Tech	2457	2,754	2,638	3,260	2,394
English & Foreign Languages	11251	11,186	12,004	11,568	10,254
Engineering	1993	2,247	2,340	2,352	2,467
Family & Consumer Science	1750	2,121	2,849	2,710	2,847
Health & Human Performance	4009	4,087	4,355	4,835	4,643
History	5073	6,018	6,918	5,973	5,136
Honor's College	45	47	45		
Math, Comp Sci, & Stat	15145	15,111	15,613	14,854	14,386
Mass Communications	1075	1,277	3,782	3,732	3,811
Mgmt, Marketing and Gen Bus	5892	5,898	5,877	5,520	5,565
Music	2362	2,622			
Nursing	2652	3,674	4,231		
Graduate Nursing				366	355
Performing Arts			4,350	4,577	4,429
Physics	1969	2,158	2,076	2,075	2,150
Psychology	6403	6,260	5,673	6,854	5,869
Social Sciences	9383	9,078	9,646	9,758	8,578
Speech and Theatre Arts	2781	2,791			
Technology	1256	870	893	1,038	1,143
Teacher Education	6219	4,317	4,002	4,504	3,958
TEDU Admissions/Field Exper		786	933	909	726
Undergraduate Nursing				4,977	5,477
Visual Arts	1896	2,046	2,454	2,730	2,676
<b>Total</b>	<b>103,097</b>	<b>106,941</b>	<b>113,229</b>	<b>115,620</b>	<b>107,619</b>

## Financial Aid

	<u>03-04</u>	<u>04-05</u>	<u>05-06</u>
Undergraduates Receiving Aid	75%	77%	75%
Amount of Undergraduate Aid	\$36 Million	\$40.5 Million	\$40.9 Million
Graduates Receiving Aid	52%	54%	51%
Amount of Graduate Aid	\$5 Million	\$5.3 Million	\$5.6 Million

## Annual Fees 2006-2007 (Fall and Spring Semesters)

	<u>Undergraduate</u> (12 hours)	<u>Graduate</u> (9 hours)
In-State Undergraduate Tuition & Fees	\$3,217	\$3,097
Out-of-State Undergraduate Tuition & Fees	\$9,283	\$9,163
Book & Supplies (Estimated)	\$1,000	\$1,000
Room (Estimated based on semi-private dorm)	\$1,370	\$1,370
Board (Estimated based on declining balance plan)	\$1,896	\$1,896



**Revenues**  
**Operating (Unrestricted) Fund**

	Actual 2004-2005	Actual 2005-2006	Budgeted 2006-2007
<b>Revenues by Source</b>			
State Funds	\$26,784,528	\$27,162,866	\$30,394,000
Self-Generated Funds	\$22,726,512	\$24,317,365	\$25,571,413
<b>Total Revenues</b>	<b>\$49,511,040</b>	<b>\$51,480,231</b>	<b>\$55,965,413</b>

**Expenditures**  
**Operating (Unrestricted) Fund**

	Actual 2004-2005	Actual 2005-2006	Budgeted 2006-2007
<b>Expenditures by Function</b>			
Instruction	\$23,340,252	\$23,817,790	\$25,867,238
Research	\$836,375	\$527,348	\$625,759
Academic Support	\$4,773,602	\$5,274,181	\$5,400,182
Student Services	\$3,354,601	\$3,098,999	\$3,587,245
Institutional Services	\$5,410,460	\$5,808,917	\$6,846,517
Scholarships/Fellowships	\$3,377,596	\$3,633,503	\$3,695,228
Plant Operations/Maintenance	\$4,990,776	\$5,372,606	\$6,101,883
Transfers out of agency	\$986,588	\$1,277,977	\$1,127,315
Athletics	\$2,440,791	\$2,668,910	\$2,714,046
<b>Expenditures by Expense Category</b>			
Salaries	\$27,960,521	\$27,858,314	\$30,114,358
Other Compensation	\$516,437	\$326,169	\$578,748
Related Benefits	\$8,381,179	\$9,111,575	\$10,362,552
Travel	\$210,863	\$131,804	\$248,240
Operating Services	\$2,874,263	\$2,885,665	\$3,513,558
Supplies	\$540,903	\$555,554	\$641,437
Professional Services	\$112,597	\$145,773	\$216,414
Other Charges	\$6,225,403	\$6,575,020	\$6,906,832
Debt Services	\$32,458	\$0	\$0
Interagency Transfers	\$986,588	\$1,277,977	\$1,127,315
General Acquisitions	\$1,324,729	\$2,224,107	\$1,385,961
Library Acquisitions	\$345,098	\$192,749	\$286,500
Major Repairs	\$0	\$195,523	\$583,498
<b>Total Expenditures</b>	<b>\$49,511,040</b>	<b>\$51,480,231</b>	<b>\$55,965,413</b>

## Facilities

	Owned	Leased	Total
Land Holdings	500.95 Acres	265.45 Acres	766.4 Acres
Building Gross Square Footage	1,402,457	413,816	1,816,273
Building Net Assignable Square Footage	980,421	338,175	1,318,596

## Net Assignable Space by Allocation Category

	Square Feet	% Total
Academic	500,539	38.0
Administrative	63,114	4.8
Athletics	66,695	5.0
Auxiliary	524,661	39.8
Residential	163,587	12.4
<b>Total</b>	<b>1,318,596</b>	<b>100.0</b>

## Faculty/Staff

### Fall 2006 Full-Time Faculty by Rank

	Tenured	On tenure track	Not on tenure track	Total	%
Professors	65			65	21.5
Associate Professors	54	2	1	57	18.9
Assistant Professors	38	74	21	133	44.0
Instructors			39	39	12.9
Lecturers			8	8	2.7
<b>Total</b>	<b>157</b>	<b>76</b>	<b>69</b>	<b>302</b>	<b>100.0</b>

### Fall 2006 Full-Time Faculty by Highest Degree

	Tenured	On tenure track	Not on tenure track	Total	%
Bachelors			2	2	.7
Masters	35	22	42	99	32.8
Terminal Masters	7	4	9	20	6.6
Doctorate	115	50	16	181	59.9
<b>Total</b>	<b>157</b>	<b>76</b>	<b>69</b>	<b>302</b>	<b>100.0</b>

### Fall 2006 Full-Time Faculty by Race and Gender

	Men	Women	Total	%
American Indian/Alaskan		1	1	.3
Asian/Pacific Islander	16	3	19	6.3
Black, non-Hispanic	3	11	14	4.7
Foreign	2	1	3	1.0
Hispanic	1		1	.3
White, non-Hispanic	142	122	264	87.4
<b>Total</b>	<b>164</b>	<b>138</b>	<b>302</b>	<b>100.0</b>

### Full-Time Equivalent Faculty

<b>06-07</b>	339.3
<b>05-06</b>	343.0
<b>04-05</b>	343.2

### Fall 2006 Employees by Occupation

	Full-Time	Part-Time	Total	%
Primarily Instruction	302	90	392	46.2
Executive/administrative/managerial	48		48	5.7
Other professionals (support/service)	142	10	152	17.9
Technical and paraprofessionals	53	4	57	6.7
Clerical and secretarial	101	1	102	12
Skilled crafts	20	1	21	2.5
Service/Maintenance	76		76	9.0
<b>Total</b>	<b>742</b>	<b>106</b>	<b>848</b>	<b>100.0</b>

### Fall 2006 Employees by Race and Gender

	Men	Women	Total	%
American Indian/Alaskan	1	1	2	.2
Asian/Pacific Islander	17	6	23	2.7
Black, non-Hispanic	57	86	143	16.9
Foreign, Non-Resident	4	2	6	.7
Hispanic	1	2	3	.4
Unknown	1	0	1	.1
White, non-Hispanic	286	384	670	79.0
<b>Total</b>	<b>367</b>	<b>481</b>	<b>848</b>	<b>100.0</b>