

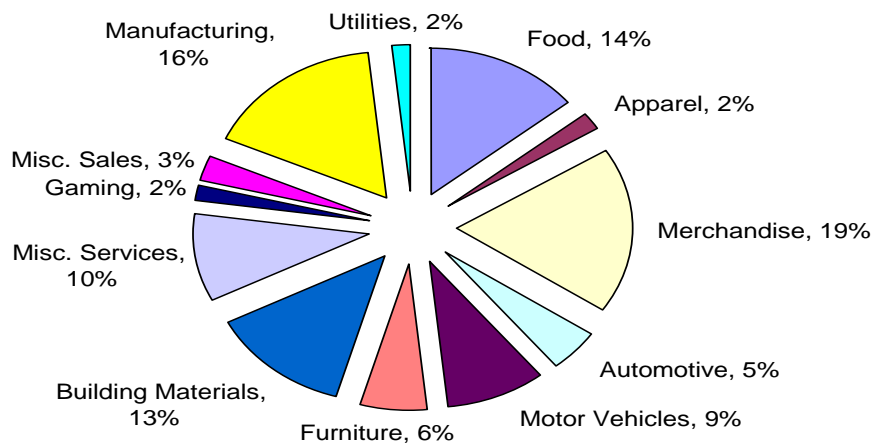
SOUTHWEST LOUISIANA ECONOMIC SNAPSHOT

June 16, 2008

CALCASIEU PARISH TAXABLE SALES

Category of Sales	April	April	Percent Change	Year-to-Date (Jan -- April)		
	2008	2007		2008	2007	Percent Change
	(\$ Million)			(\$ Million)		
Food	\$51.9	\$44.3	17.1%	\$206.1	\$183.8	12.2%
Apparel	\$6.9	\$6.3	10.0%	\$28.4	\$27.6	3.1%
Merchandise	\$66.1	\$67.7	-2.4%	\$271.9	\$278.0	-2.2%
Automotive	\$17.9	\$24.5	-26.9%	\$69.0	\$82.8	-16.6%
Motor Vehicles	\$35.8	\$34.7	3.1%	\$135.7	\$130.8	3.7%
Furniture	\$19.1	\$18.6	2.8%	\$90.2	\$97.0	-6.9%
Building Materials	\$45.6	\$44.2	3.2%	\$190.4	\$176.5	7.9%
Miscellaneous Services	\$35.4	\$27.7	27.8%	\$140.6	\$133.0	5.7%
Gaming	\$6.6	\$5.5	19.5%	\$25.5	\$22.3	14.8%
Miscellaneous Sales	\$12.4	\$8.2	51.3%	\$42.4	\$38.8	9.4%
Manufacturing	\$59.0	\$51.5	14.4%	\$242.2	\$238.8	1.4%
Utilities	\$5.2	\$3.8	34.5%	\$26.0	\$17.9	44.7%
Total	\$361.8	\$337.0	7.4%	\$1,468.4	\$1,427.1	2.9%

Relative Importance of Categories of Taxable Sales
January through April 2008



H.C. Drew Center for Economic Development Information Services, College of Business, McNeese State University, Lake Charles, Louisiana. Contacts: Center Director, Dr. Douglas McNeil, 337-475-5560, dmcniel@mcneese.edu; Database Management Specialist, Fran Fontenot, 337-475-5564, DrewEconDev@mcneese.edu. Additional information, including quarterly *Southwest Louisiana Economic Indicator* reports, may be obtained from our web page at www.mcneese.edu/drewecon.